



SH18 HOBSONVILLE DEVIATION & SH16 BRIGHAM CREEK EXTENSION

Waitakere's new connection to the North Shore

Over the next four years, the NZ Transport Agency will construct the SH18 Hobsonville Deviation Motorway, to replace the current State Highway 18 along Hobsonville Road. At the same time, the SH16 Brigham Creek Extension will be built to extend the Northwestern Motorway (SH16) three kilometres through Massey North to end at a new roundabout with Brigham Creek Road.*

The six kilometre SH18 motorway will have two lanes in each direction to connect the Northwestern Motorway (SH16) at Hobsonville Road with the Upper Harbour Bridge and Greenhithe Deviation Motorway.

Together, the three projects will form the new Upper Harbour Motorway to connect the Northwestern Motorway (SH16) to the existing Upper Harbour Highway and then onto SH1 at Constellation Drive.

The new SH18 motorway will also form the northernmost section of the Western Ring Route. This 48-kilometre route between Albany and Manukau linking SH18, SH16 and SH20 will provide a strategic alternative to SH1 across the Auckland Harbour Bridge.

The three kilometre, two-lane extension of the Northwestern Motorway (SH16) will reduce congestion on SH16 north of Don Buck Road.

These new motorways will:

- Better connect Waitakere and North Shore cities
- Increase motorway capacity to reduce travel times



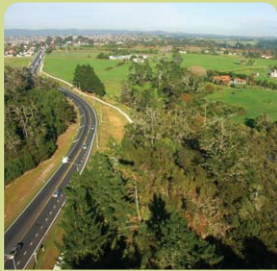
ARTIST'S IMPRESSION of the new Hobsonville Road Bridge.

- Reduce congestion on Hobsonville Road and SH16 north of Don Buck Road
- Include connections for pedestrians, cyclists and local traffic
- Provide the motorway transport infrastructure to support Waitakere's planned urban growth
- Give access to a new housing development at the Hobsonville airbase
- Form the northern link of the Western Ring Route
- Support economic development in the growing Northwest area of Auckland

Inside...

- Project map
- Artwork for Clarks Lane
- Treading lightly on the environment
- FAQs

* On 1 August 2008, Land Transport New Zealand and Transit New Zealand became the NZ Transport Agency. The NZ Transport Agency (NZTA) brings together the functions of Land Transport NZ and Transit to provide an integrated approach to transport planning, funding and delivery.



Buckley Avenue Interchange

This interchange will have ramps for motorists travelling to and from the North Shore and will also give local access into Hobsonville and a new housing development. The new cyclist and pedestrian path on the Upper Harbour Bridge will extend over the motorway via the new Buckley Avenue Bridge to a signalised intersection with Buckley Avenue.



Clarks Lane Bridge

This bridge will be a significant gateway structure on the motorway route and will provide cyclist and pedestrian access over the new motorway. For more information see next page.

Brigham Creek Road Interchange with SH16

A new roundabout will form the interchange to connect the new extension of SH16, Brigham Creek Road and the existing SH16. SH16 north of Don Buck Road will become a local road managed by Waitakere City Council when the new motorway opens.



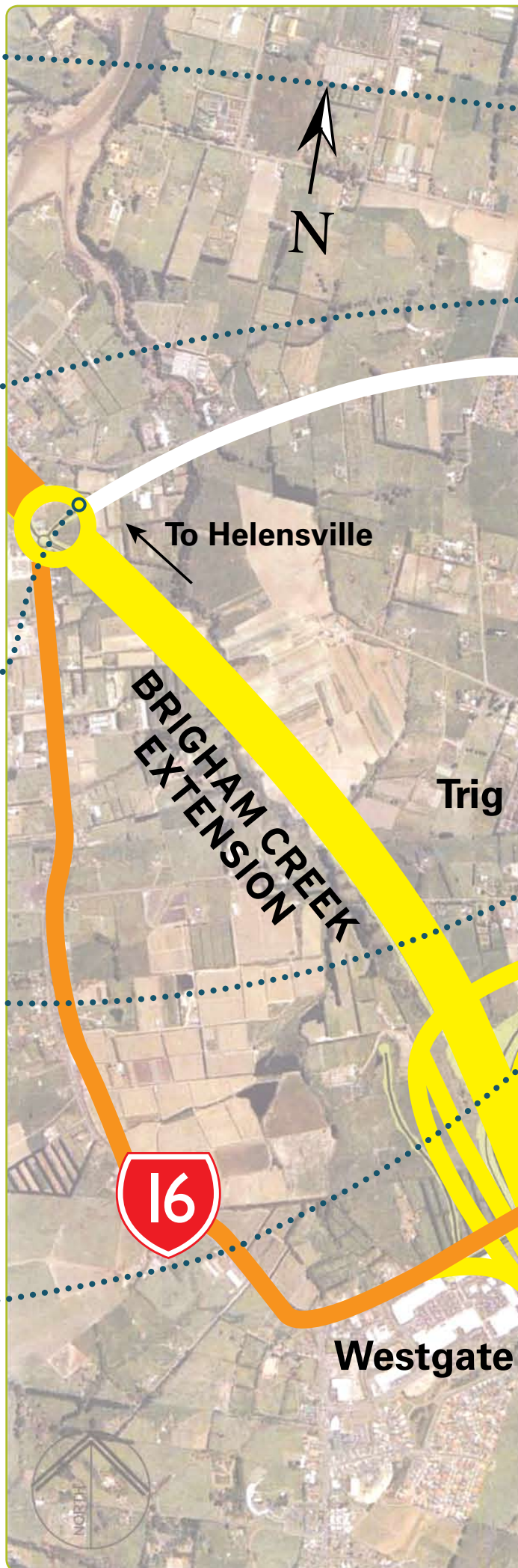
Brigham Creek Road Interchange with SH18

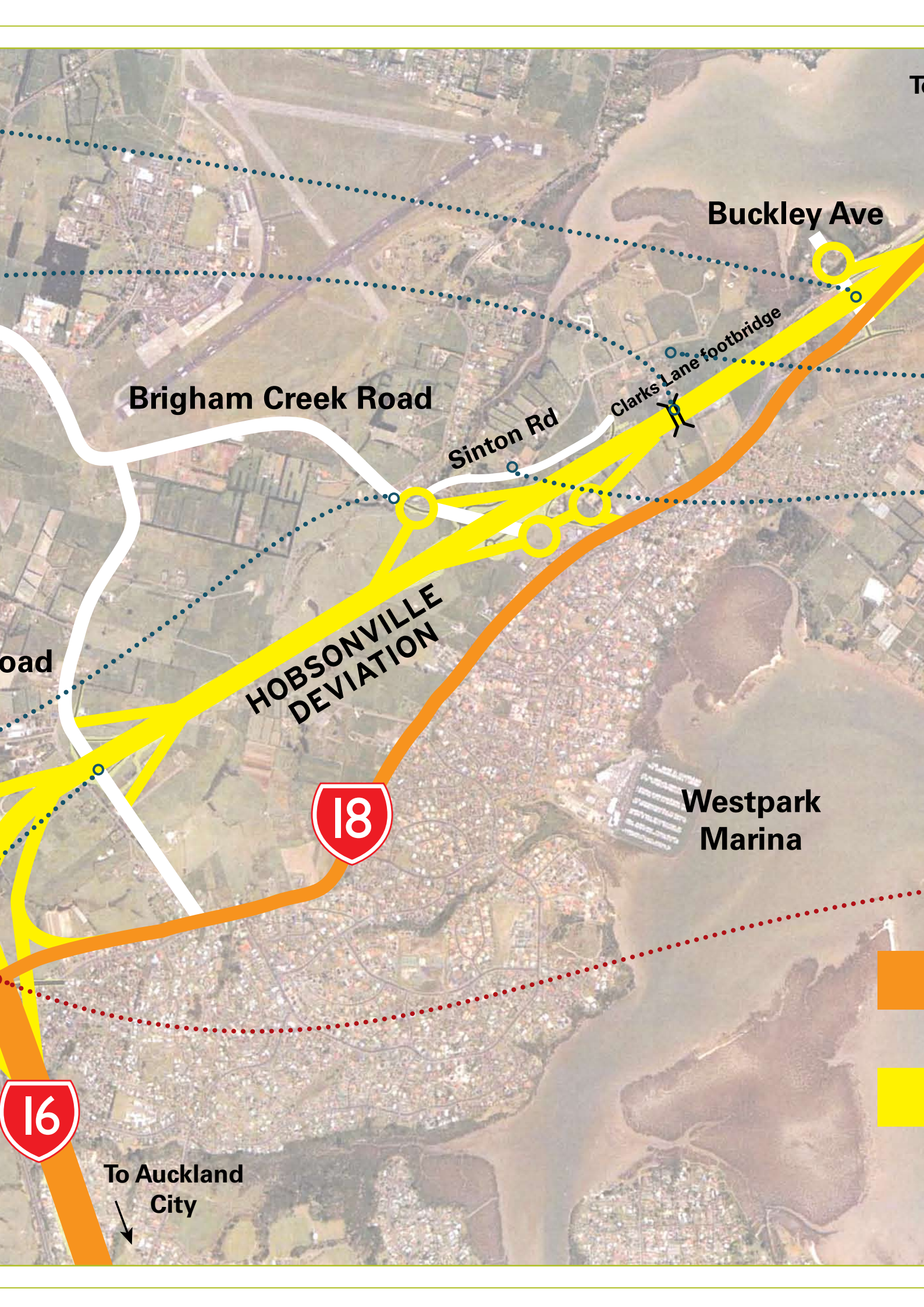
This interchange will provide access on and off the motorway in all directions and will form the connection between Kumeu in Rodney District and the North Shore via Brigham Creek Road.



Trig Road Interchange

This interchange will have ramps for motorists travelling to and from the North Shore.





Buckley Ave

Brigham Creek Road

Sinton Rd

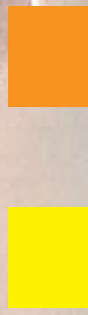
Clarks Lane footbridge

HOBSONVILLE DEVIATION

Westpark Marina



To Auckland City





To North Shore

Upper
Harbour
Bridge

Existing State Highway

New Motorway

Heritage buildings

Three heritage buildings along Clarks Lane and Brigham Creek Road have been relocated in partnership with the NZ Historic Places Trust and Waitakere City Council. Sinton House and Ockleston House had to be demolished as they were unable to be relocated. Records of all historic properties have been kept and the design of an art feature is underway that will reflect the heritage of Sinton House. 'Sinton House Windows' will be situated near the relocated houses in Clarks Lane, adjacent to Clarks Lane Bridge.



Sinton Road Extension

The motorway will bisect Sinton Road and a new link road built to connect local traffic to the Brigham Creek Road Interchange.



Hobsonville Road Interchange with SH16

An interchange incorporating a bridge over the new extension of SH16 will connect the existing SH16 with the new SH18 motorway. This interchange will replace the intersection of Hobsonville Road and the Northwestern Motorway (SH16). Motorists will also be able to continue along SH16 to Brigham Creek Road on a new extension.

Four on and off-ramps will give easy connections to Hobsonville Road and a link road will provide access to the planned development opposite the Westgate shopping centre. When the new motorway opens, SH18 Hobsonville Road will become a local road managed by Waitakere City Council. New facilities for pedestrians and cyclists will give links across the motorway from Massey East to Massey West at Hobsonville Road.



CLARKS LANE BRIDGE a two metre wide cable-stay footbridge for pedestrians and cyclists will give access over the motorway.

Urban Design

- The NZ Transport Agency is working closely with Waitakere City Council and the local community and iwi to incorporate urban design elements, including native planting into the motorway design.

SH16 Brigham Creek Extension – ‘The Green Route’

Running between Hobsonville Road and Brigham Creek Road, the Green Route will feature extensive planting of native flaxes along with ‘green walls’ planted with ferns, grasses, climbers and hanging plants. Stormwater wetlands will have plantings of reeds, flaxes and cabbage trees to maintain and enhance the natural environment.

Cyclists & pedestrians

- The newly constructed cycle path on Upper Harbour Bridge will connect to Hobsonville Road by a new bridge at Buckley Avenue Interchange.
- There will also be paths for cyclists and pedestrians in the new Hobsonville Road Interchange.
- The Clarks Lane Bridge is a shared facility for pedestrians and cyclists.

SH18 Hobsonville Deviation ‘The Gallery Route’

Running between Hobsonville Road and Buckley Avenue, the Gallery Route will feature plantings of manuka and totara.

Sinton House Windows

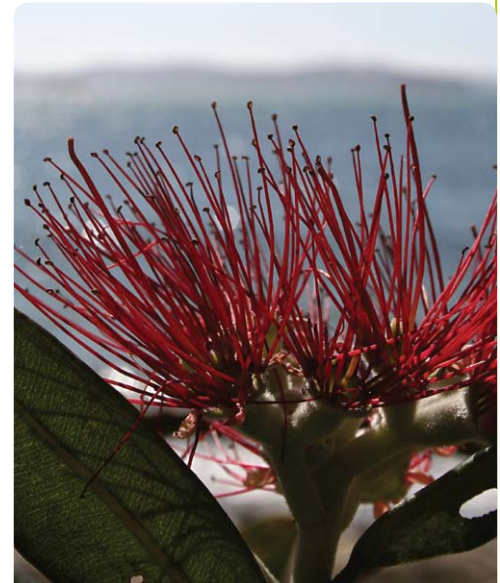
In an initiative led by Waitakere City Council, a major artwork by Waitakere artist John Radford will take pride of place alongside the Clarks Lane Bridge. It will incorporate some of the original windows from Sinton House.

Clarks Lane Bridge

A two metre wide cable-stay footbridge for pedestrians and cyclists will give access over the motorway. A 24 metre high central pier will hold the cables and form a gateway structure for motorists entering Waitakere City from the North Shore.

Ribbon walls

Walls painted a burnt orange colour will minimise motorway noise on surrounding businesses and residences.



Environment

- Native trees and shrubs such as nikau, kowhai, flaxes, manuka, totara and pohutakawa will be planted along the route. Seeds for shrubs will be eco-sourced from nearby areas and extensive planting will revegetate the motorway corridor and minimise maintenance.
- Run-off from the motorway will be caught and filtered by sedimentation ponds. During construction, temporary ponds will be created at key sites in the work area. Other ponds will stay in place once the motorway has opened.
- Limiting major earthworks to the summer months will help minimise the disturbance to the environment surrounding the motorway by reducing the risk of erosion and sediment run-off.
- Noise walls and landscaped earth mounds will reduce noise from the new motorway affecting existing properties.

Public transport

- The shoulders of both motorways are designed to accommodate bus shoulder lanes in the future.
- The motorway will reduce traffic on Hobsonville Road to give a quicker trip for buses.

Frequently asked questions

When will the motorway open?

Construction has started and will take four years to complete. The entire project, both SH18 Hobsonville Deviation and SH16 Brigham Creek Extension will be completed and open in 2012.

How much will it cost?

Together SH18 Hobsonville Deviation and SH16 Brigham Creek Extension will cost an estimated \$220 million. The total cost of the SH18 motorway is an estimated \$400 million, including the Greenhithe Deviation and the duplication of Upper Harbour Bridge, which are already open.

Who is doing the work?

The NZ Transport Agency has let the contract for the project's detailed design and construction to HEB Construction Ltd.

The NZTA has appointed Opus Consultants and Maunsell AECOM as technical advisors to the project.

What about pedestrians and cyclists?

The newly built cyclist and pedestrian path on the Upper Harbour Bridge will connect to Hobsonville Road by the

new Buckley Avenue Bridge. Cyclist and pedestrian facilities will also be included in the new Hobsonville Road Interchange. Clarks Lane Bridge is shared for pedestrians and cyclists.

There is work occurring on/near my property – who can I speak to?

The NZ Transport Agency is committed to working with all residents affected by the work. If you would like to discuss work happening near your property, **freephone 0800 520 202**.

Will roads be closed as part of construction?

Temporary and limited permanent road closures will be needed throughout the four-year construction period. Extensive advertising and notification will give advance warning before any closures are put in place.

How can I find out more about the project?

For more information on the SH18 Hobsonville Deviation and SH16 Brigham Creek Extension projects, visit **www.nzta.govt.nz/upperharbourmotorway**.

Regular newsletters and updates will be distributed to residents and businesses in the local area.

For information on the Hobsonville and Massey North developments see **www.waitakere.govt.nz** or contact Waitakere City Council on **09 839 0400**.

Will work take place at night?

To complete the project as quickly as possible some work will take place at night. All noisy work will be completed before midnight where possible and all residents near work sites will be advised in advance of any expected disruption.

How do these projects link to the new motorway through Greenhithe?

SH18 Hobsonville Deviation is the last section of the Upper Harbour Motorway (SH18) to be built. Greenhithe Deviation, a new 5.5 kilometre, four-lane motorway completed last year, connects the Upper Harbour Bridge to Albany Highway.

When the Hobsonville Deviation is finished, motorists will be able to travel from Paul Mathews Drive in Albany to the Northwestern Motorway along a single motorway.

Want to be kept up to date? Subscribe to the SH18 newsletter by emailing your details to hobsonville@heb.co.nz.

Printed on environmentally sustainable paper. Please recycle.

Contact Us:

For more information

Phone 0800 520 202

Email hobsonville@heb.co.nz

www.nzta.govt.nz/upperharbourmotorway