

# Tamahere Interchange safety improvements

## Works to improve Tamahere Interchange

Work is about to start to improve access and safety under the Tamahere Interchange for pedestrians, cyclists and people on mobility scooters.

Raised pedestrian crossings will be installed, including one controlled by a traffic light, and shared paths will be widened and extended. To make way for the wider paths the on-ramp and Airport Road roundabout will be tweaked to make room.

This will create a safer journey for all - including pupils attending Tamahere Model Country School, and Eventide Village residents heading to and from the local shopping centre.

The work is going to be delivered in two stages.

The first stage is part of the Hamilton section of the Waikato Expressway and will see CityEdge Alliance (CEA) realign the SH21 roundabout and the path under the bridge.

They will also create room for the approaches

of the roundabout (left-turning vehicles from SH21 will have a separate lane). These works involve all the services and drainage within those improvements.

After CEA finishes their work in early 2023, a second contractor will start the safety improvements. These are the raised safety platforms, the shared pathway from SH21 to the on-ramp, the signalised crossing on the on-ramp, and other pavement, drainage and services involved with those improvements.

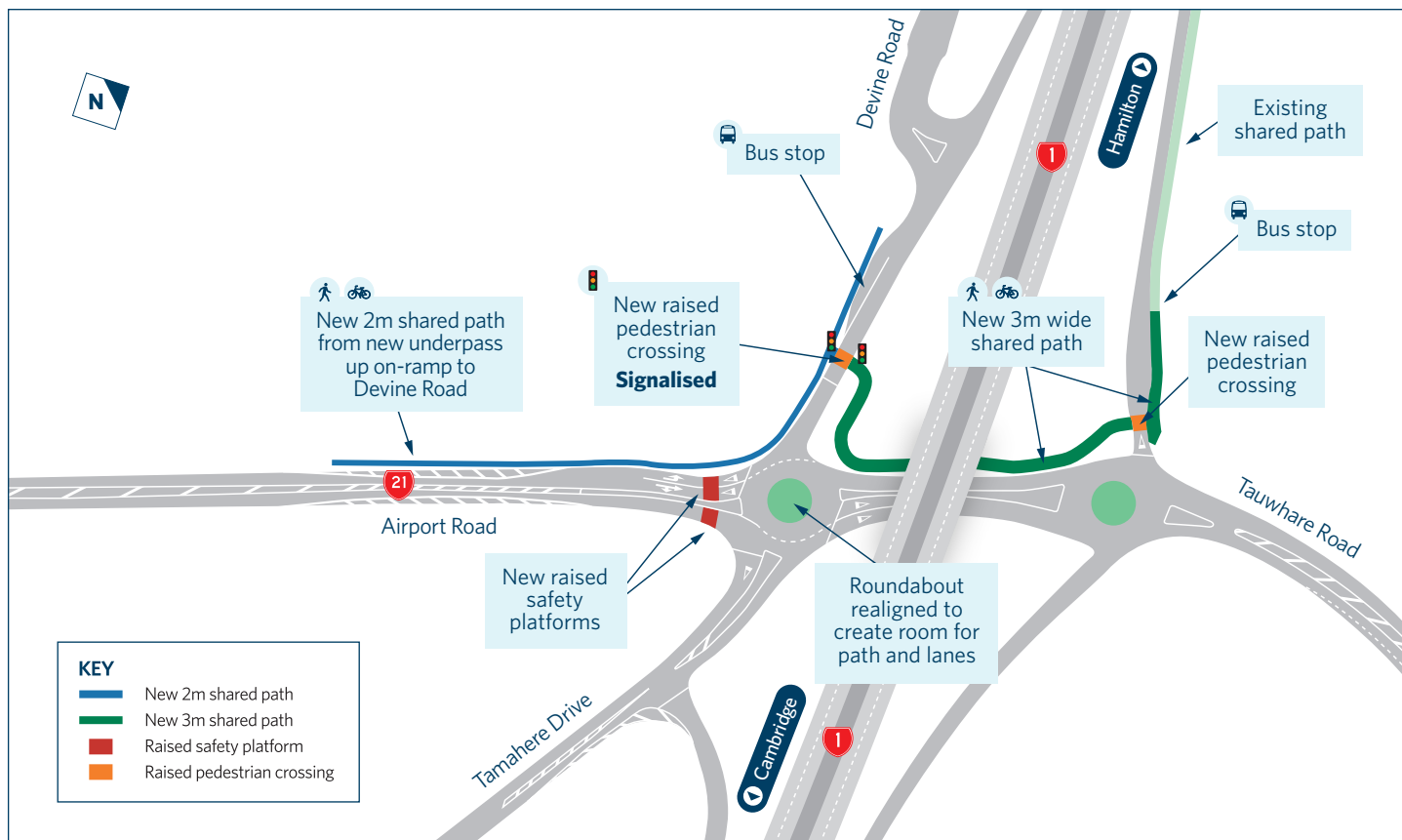
### Background

Over the last year work has been completed on a business case to improve the safety of this intersection for all users but particularly for those travelling on foot or by bike.

Many local people attended the public consultation event and a range of views were provided on the various options. The business case has been concluded and we can now start work to begin improving the intersection.

The business case process concluded that a staged implementation is recommended as follows:

- Implement the road-level improvements (starting now)
- Monitor the performance of the interchange and levels of benefits
- Monitor progress on the Southern Links project to understand whether this interchange will be bypassed in the future and therefore the need for further separation of vehicles and pedestrians/cyclists.



A view of the works ahead under the interchange

# How will this work affect road and path users?

Work for stage 1 will start from 12 September 2022 and run through to early 2023, with a break for a week during the Fieldays in late November-early December.

Nightworks will be required for approximately three weeks at the start and near the completion. During those night works, between 8pm and 5am, Sunday to Thursday nights, various sign-posted detours will be required for people coming and going from the area. Please follow the instructions from the site crew.

The graphic below shows the night-time work area so some people will need to take the alternative routes.

The remainder of works will be done under speed restrictions and traffic management. Access for vehicles and path users will be maintained at all times during the day.

While working on a soil-nail wall under the bridge from late September, pedestrians and traffic will be realigned under the bridge.

The second stage, installing the safety improvements, will start in early 2023 and take about three months.

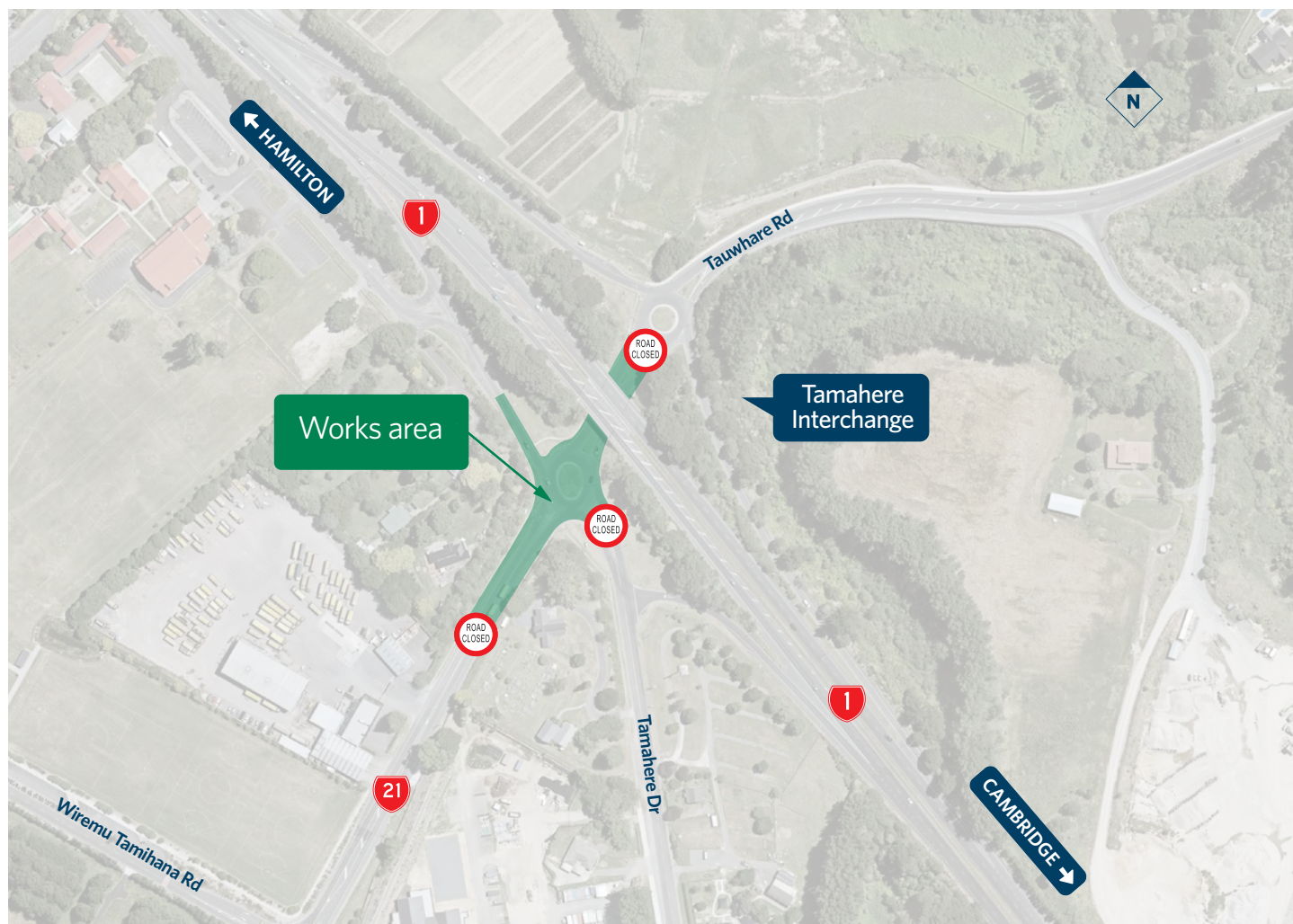
## Work above and below

The SH1 Tamahere Interchange opened to traffic in 1995 and is currently under lane closures and speed restriction while being upgraded to current expressway safety standards.

Work continues there until October. The work above and below are two different projects and a clash was unavoidable unless we waited for the SH1 works to finish.


We will do our best to keep disruption to a minimum but road users can expect delays at peak times. Thank you in advance for your patience.

## Night-time work area - detours in place



### Got a question?

Expressway Stakeholder and Communications Manager, Simon Brandon

 021 615 461

 [simon.brandon@nzta.govt.nz](mailto:simon.brandon@nzta.govt.nz)

