



Eastern Corridor future priorities

Short list options

All options include:

- » Staged construction depending on rate of urban development and traffic growth
- » Solid median throughout corridor, which will restrict local road and property access. U-turn facilities will be included to accommodate vehicles
- » Off-road cycling facility (shared path or separated cycle lanes) along Te Ngae Road
- » Public transport improvements

Note: Owkata Road to Rotorua Airport will be investigated at a later stage of the project

OPTION 1

Four lanes / new roundabout at Basley Road

Widen Te Ngae Road to four lanes with solid median from Sala Street to Owkata Road

New roundabout at Basley Road, providing for a future fourth leg towards the north

Cost: \$17m-\$27m



OPTION 2

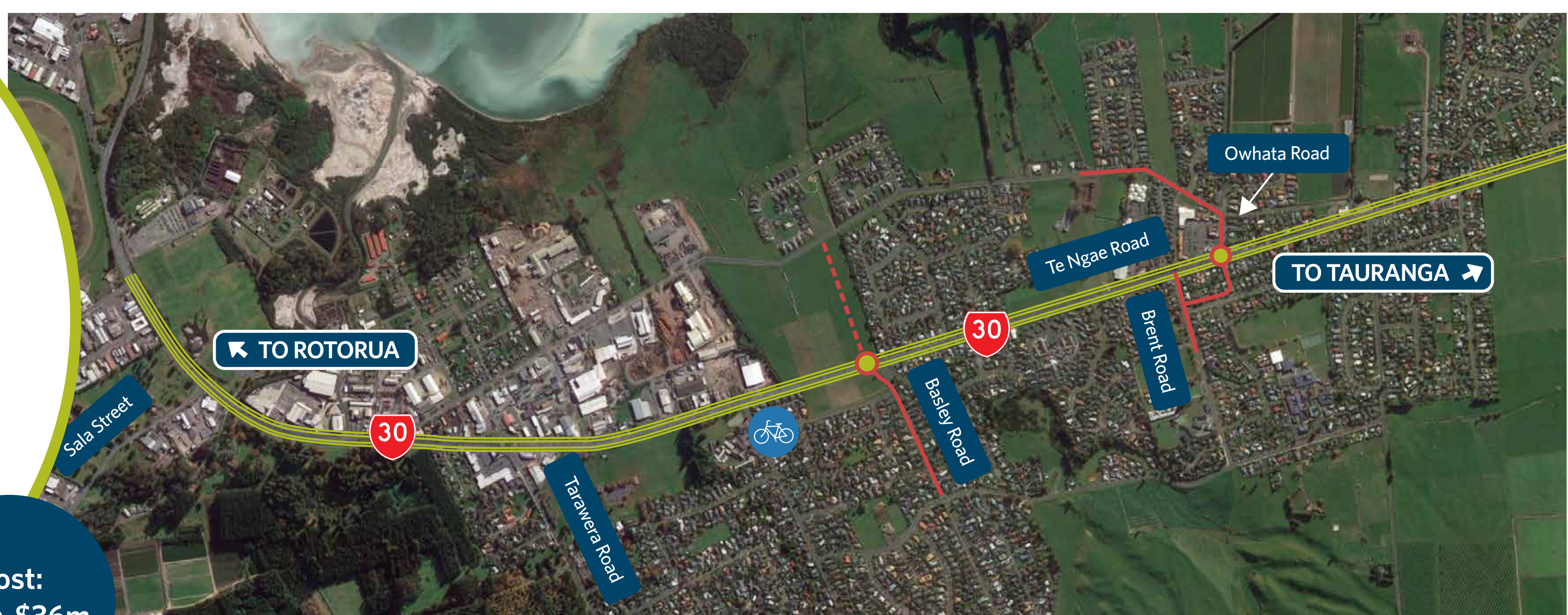
Four lanes / new roundabout at Basley Road / improved roundabout at Owkata Road

Widen Te Ngae Road to four lanes with solid median from Sala Street to Owkata Road

New roundabout at Basley Road, providing for a future fourth leg towards the north

Improve and add a fourth leg to the Owkata Road roundabout, close access to Te Ngae Road from Brent Road

Cost: \$22m-\$36m



OPTION 3

Four lanes / traffic lights at Tarawera, Iles, Basley and Owkata Roads

Widen Te Ngae Road to four lanes with solid median from Sala Street to Owkata Road

Traffic lights at Tarawera Road, Iles Road, Owkata Road and Basley Road

Provide for a potential fourth leg towards the north at Basley Road, and a potential fourth leg south at Owkata Road

Cost: \$20m-\$33m

