

# Improving Rotorua's transport network

The NZ Transport Agency is working with Rotorua Lakes Council to deliver Connect Rotorua, a programme of work designed to future-proof the city's transport network.

The programme is split into two projects:

**Central Corridor**

SH30A /  
Amohau Street

**Eastern Corridor**

SH30 /  
Te Ngae Road

The aims for the programme are to address congestion and local road access onto the state highway, and support the work Council is doing to revitalise the inner city.

Alongside the Connect Rotorua work there are also the CyWay Rotorua Cycle Network projects and the safety projects; SH5 Ngongotaha to Tarukenga, SH30 Te Ngae to Owhata and SH30/33 Te Ngae to Paengaroa.

## The process

**The Transport Agency is using a business case approach to identify the best solutions for the central and eastern corridor projects.**

A key component of this approach means investigating new options, and considering the alternatives and benefits alongside our stakeholders and communities.

## Now we need your input

**Last year the Government announced the \$24 million programme to transform the central and eastern corridors, with the potential for further investment based on growth.**

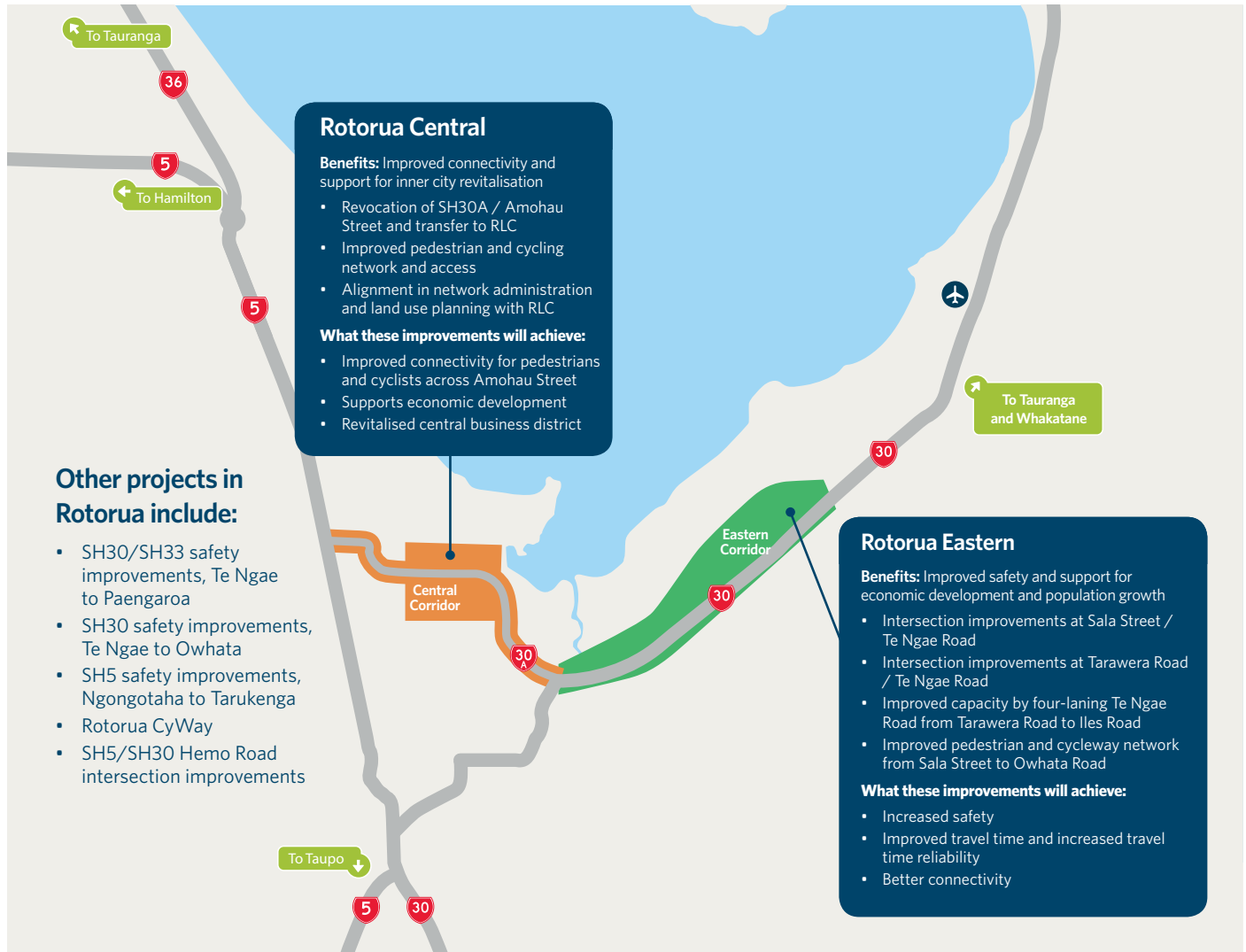
Since October workshops have been held with key stakeholders, including Rotorua Lakes Council (RLC), Bay of Plenty Regional Council, iwi partners, emergency services, and freight and tourism groups, to look at the problems and possible solutions.

Using stakeholder feedback a short list of options has been developed that aims to enhance Rotorua's central corridor and improve capacity in the east.

The next stage is to share this information with the community and gain further input before we move onto the next step.

# Central and eastern corridor improvements

There are two stages to the Connect Rotorua programme. Initial upgrades are scheduled for the short-term between Sala Street and Tarawera Road. Future upgrades, which will be triggered by growth and in accordance with the Spatial Plan, will be from Tarawera Road towards Rotorua Airport.



## Come and see us

The Transport Agency and Rotorua Lakes Council understand how important the central and eastern corridors are to those who work, live and travel along it.

Public information days will be held to present to you a short list of options that have been developed. This will be your opportunity to see the short list and talk to members of the project team about the options up for consideration.

### Public information sessions

**Wednesday 12 April 2017**

**10am - 1pm**

Sir Howard Morrison Performing Arts Centre Foyer, 1170 Fenton Street, Rotorua

**4pm - 7pm**

Lynmore Primary School Hall, Corner Te Ngae Road and Iles Road, Rotorua (Parking outside the school office or on Larcy Road, Iles Road and Owatiura Road)

If you have any questions talk to the Transport Agency

07 927 6009

[ConnectRotorua@nzta.govt.nz](mailto:ConnectRotorua@nzta.govt.nz)

Material at the information day can also be viewed online at [www.nzta.govt.nz/projects/connect-rotorua](http://www.nzta.govt.nz/projects/connect-rotorua)