

Future-proofing Rotorua's transport network

Rotorua is a key connection point for road transport in the central and upper North Island, connecting industries such as tourism, and forestry with the Port of Tauranga.

Rotorua's eastern corridor has long been identified as the location for the majority of future residential and employment development in the city. It is a key transport route, serving both inter-regional and local traffic.

The NZ Transport Agency and Rotorua Lakes Council have been looking at the best way to future-proof the city's transport network, resolve congestion issues, address challenges surrounding local road access, and support inner city revitalisation.

The Rotorua Eastern Arterial was previously seen as the long term solution to ease congestion on Rotorua's eastern corridor, however investigations have shown

that the growth can be managed with upgrades to the existing routes. The designation for the Eastern Arterial was lifted earlier this year and property that is no longer required by the Transport Agency will be disposed of (sold) as per LINZ and the Public Works Act.

In February 2016, the Transport Minister, Hon Simon Bridges announced an estimated \$24 million programme to transform the central and eastern corridor in support of the district's wider urban and recreational networks with the potential for further investment based on growth.

In the eastern corridor the initial programme includes:

- Intersection improvements at Sala Street/Te Ngae Road and the Tarawera Road/Te Ngae Road intersections.
- Four-laning a section of Te Ngae Road between Tarawera Road and Iles Road.
- Improving walking and cycling connections.

This initial investment into Rotorua's transport network

is designed to support economic growth and development, help address current capacity issues, accommodate medium-term growth and improve road safety.

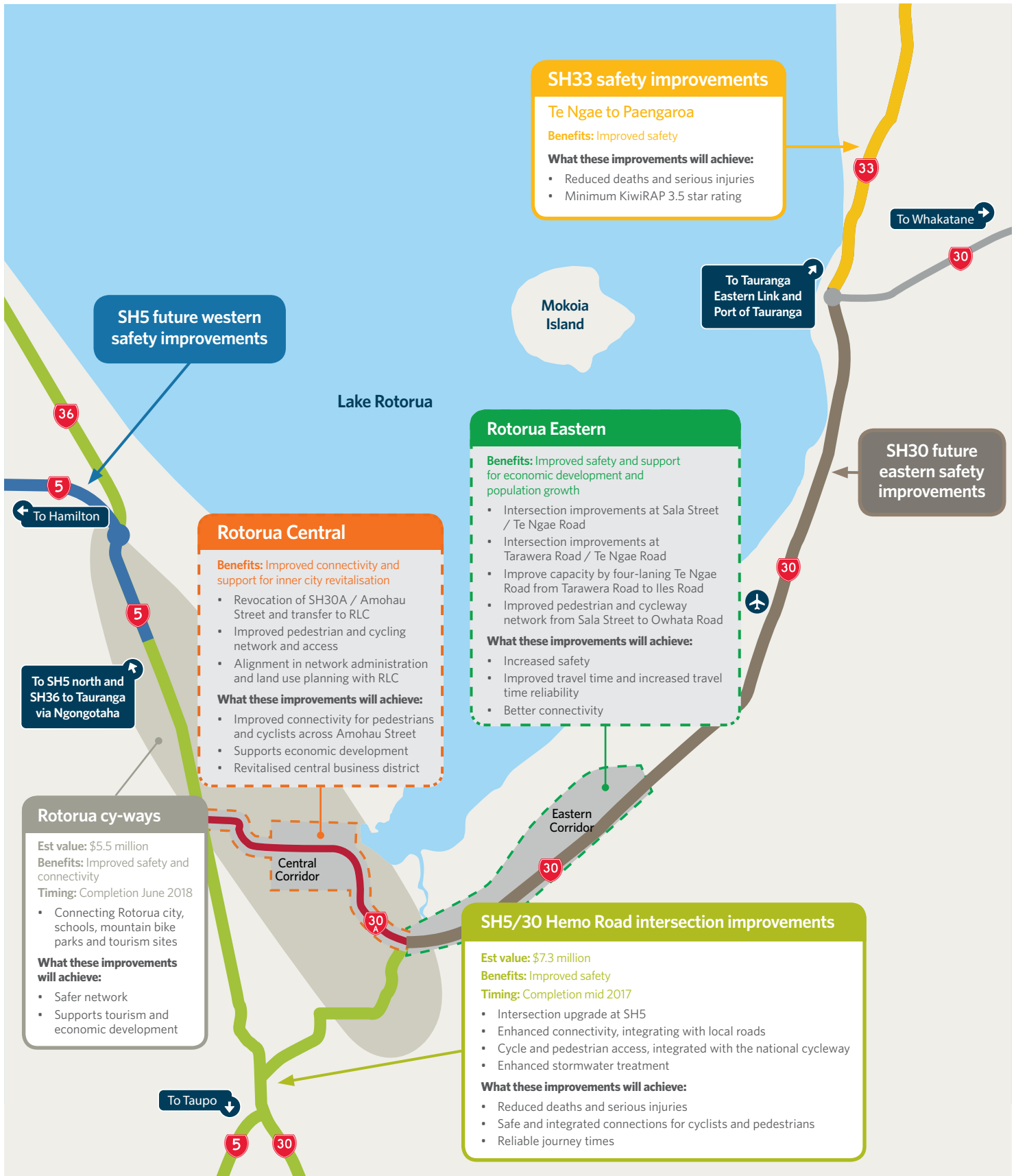
In the central corridor, State Highway 30A Amohau Street is intended to be revoked and the ownership handed to the Council to support their Inner City Revitalisation project. The Transport Agency, with Rotorua Lakes Council, are working together to develop a plan to adapt the transport network to support its local function and the city centre revitalisation.

The Transport Agency and Rotorua Lakes Council are investigating the detailed options for the future proposed works. Construction is programmed to be carried out over the next two to three years.

This work will complement the more than \$17 million worth of transport projects already announced or underway in Rotorua, including the SH5 Hemo Road roundabout and cycling connections.



Rotorua's wider investment programme and improvements



IF YOU HAVE ANY QUESTIONS TALK TO THE TRANSPORT AGENCY



Visit our website www.nzta.govt.nz/rotorua



Email connectrotorua@nzta.govt.nz



Phone 07 927 6009