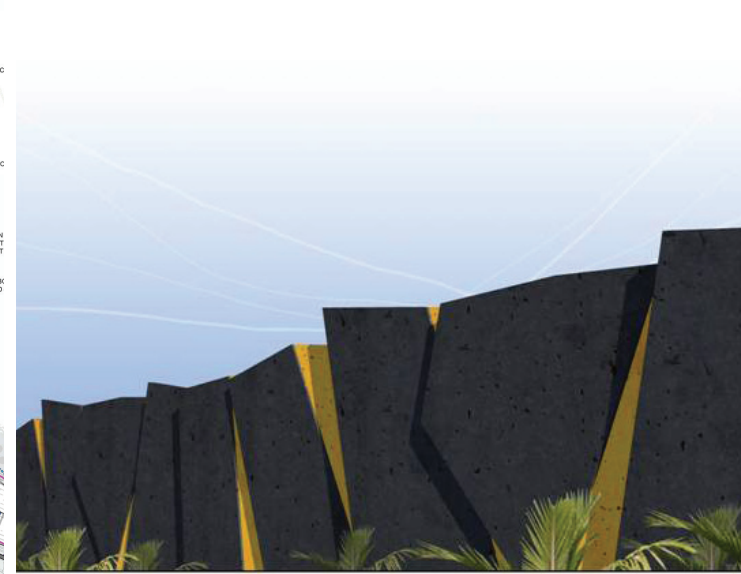
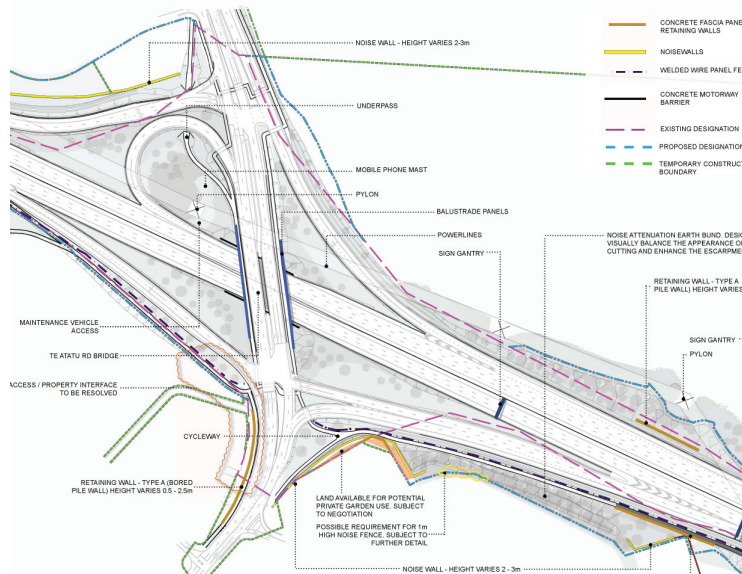
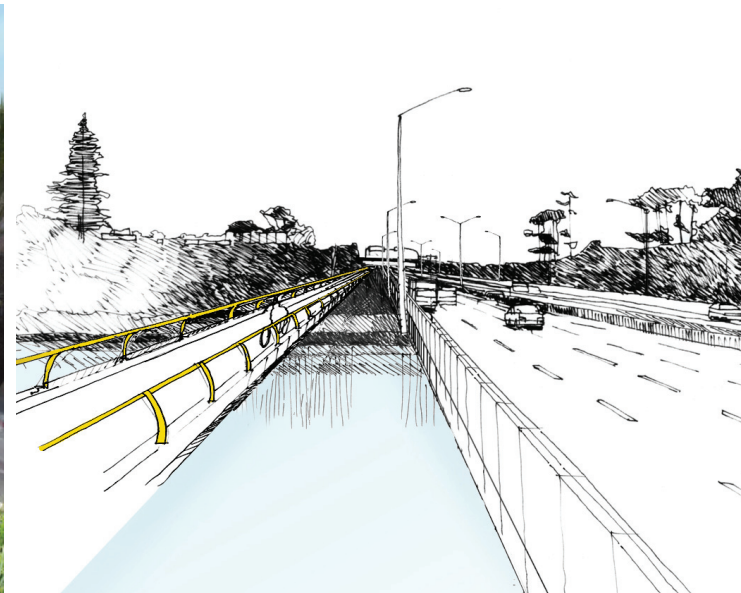


# Western Ring Route – Waterview Connection Urban and Landscape Design Framework

June 2010



# Western Ring Route ▶ Waterview Connection

## Document Acceptance

Action	Name	Signed	Date
Prepared by	Lynne Hancock, Technical Director - Urban Design, Beca with input from: <ul style="list-style-type: none"><li>Tim Robinson, Urban Designer, Jasmax (provided illustrations and text for SH16 sector design concepts, and contributed to analysis and principles)</li><li>Dave Little, Landscape Architect, SBEL (provided illustrations and contributed to text for SH20 sector design concepts, provided planting principles)</li><li>Jeff Wells, Architect, Jasmax (provided illustrations and contributed to text for bridges and ventilation buildings / stacks)</li></ul>		11/10/2010
Reviewed by	Lucie Desrosiers, acting NZTA Urban Design Policy Advisor		
Approved by	Amelia Linzey		
on behalf of	Beca Infrastructure Ltd (Beca)		



## Western Ring Route – Waterview Connection Urban and Landscape Design Framework

### CONTENTS

<b>Section A Background</b>	<b>A-1</b>
A1 Introduction	A-1
A2 Purpose of this Framework	A-2
A3 Project description	A-4
A4 Strategic context	A-6
A5 Urban context	A-10
<b>Section B Design vision and principles</b>	<b>B1</b>
B1 Route experience	B-1
B2 Design vision	B-2
B2.1 Urban and landscape design vision	B-2
B2.2 NZTA urban design objectives	B-2
B2.3 Over-arching project principles	B-2
B3 Existing design themes	B-2
B4 Design concepts	B-3
B5 Corridor-wide design principles	B-12
B5.1 Ecological principles	B-12
B5.2 Planting principles	B-13
B5.3 Bridge design principles	B-14
B5.4 Tunnels, portals, ventilation buildings and stacks design principles	B-14
B5.5 Noise wall design principles	B-15
B5.6 Retaining walls design principles	B-20
B5.7 Highway furniture design principles	B-23

<b>Section C Sector design concepts</b>	<b>C1</b>
C1 Sector 1 Te Atatu Interchange	C-3
C1.1 Henderson Creek	C-3
C1.2 Te Atatu Interchange	C-7
C2 Sector 2 Whau River	C-17
C3 Sector 3 Rosebank – Terrestrial	C-21
C3.1 Patiki Road	C-21
C3.2 Rosebank Road	C-25
C4 Sector 4 – Reclamation	C-31
C4.1 Traherne Island	C-31
C4.2 Causeway	C-35
C5 Sector 5 Great North Road Interchange	C-43
C5.1 Existing situation	C-43
C5.2 Design concept	C-47
C6 Sector 6 SH16 to St Lukes	C-53
C6.1 Existing situation	C-53
C6.2 Design concept	C-58
C7 Sector 7 Great North Road Underpass	C-61
C6.1 Existing situation	C-61
C6.2 Design concept	C-64
C8 Sector 8 Avondale Heights Tunnel	C-73
C8.1 Existing situation	C-73
C8.2 Design concept	C-79
C9 Sector 9 Alan Wood Reserve	C-85
C9.1 Existing situation	C-85
C9.2 Design concept	C-91
C10 Sector 10 Maioro Interchange	C-127
C10.1 Existing situation	C-127
C10.2 Design concept	C-131

# Western Ring Route ▶ Waterview Connection

## List of illustrations

<b>Section A</b>	
Figure A-1: Wider context and project route .....	A-1
Figure A-2: Summary of relationship between ULDF and AEE .....	A-3
Figure A-3: Project sectors .....	A-4
Figure A-4: Avondale Blockhouse Bay Area Plan (ACC Future Planning Framework (FPF), 2009; <a href="http://www.itsmybackyard.co.nz/areaplans/">http://www.itsmybackyard.co.nz/areaplans/</a> ) .....	A-7
Figure A-5: Western Bays Area Plan (ACC Future Planning Framework, 2009; <a href="http://www.itsmybackyard.co.nz/area">http://www.itsmybackyard.co.nz/area</a> ) .....	A-7
Figure A-6: Eden Albert Area Plan (ACC FPF 2009) .....	A-8
Figure A-7: Mt Roskill Hillsborough Area Plan (ACC FPF 2009) .....	A-8
Figure A-8: Star Mill (from Archaeology Peer Review Report) .....	A-11
Figure A-9: Historic and Heritage Features .....	A-11
Figure A-10: Geology, topography, hydrology .....	A-13
Figure A-11: Community Facilities .....	A-15
Figure A-12: Character areas (SH20) .....	A-17
Figure A-13: Open space and built form character .....	A-19
Figure A-14: Movement network .....	A-21
Figure A-15: Mt Albert Protected viewshafts –Auckland City Council District Plan .....	A-22
<b>Section B</b>	
Figure B-1: Route experience .....	B-1
Figure B-2: SH16 landscape design concept .....	B-3
Figure B-3: SH16 Design palette: forms, patterns and finishes .....	B-4
Figure B-4: SH16 Design palette: planting .....	B-5
Figure B-5: SH16 Design palette: materials and textures .....	B-6
Figure B-6: SH20 landscape design concept .....	B-7
Figure B-7: SH16 Design palette: form and pattern .....	B-8
Figure B-8: SH16 Design palette: planting .....	B-9
Figure B-9: SH16 Design palette: materials .....	B-10
Figure B-10: SH16 Design palette: colour .....	B-11
Figure B-11: Planting Strategy .....	B-13
Figure B-13: SH20 Noise wall concept – wall type 1 .....	B-15
Figure B-12: SH16 Noise wall concept .....	B-15
Figure B-14: SH20 Noise wall concept – wall type 2 .....	B-15
Figure B-15: SH20 Noise wall type 1 – plan and elevation .....	B-16
Figure B-16: SH20 Noise wall type 1 – long elevations .....	B-16
Figure B-17: SH20 Noise wall type 2– long elevations .....	B-17
Figure B-18: SH20 Noise wall type 2– panel options .....	B-17
Figure B-19: Location and type of noise walls, Sectors 5, 6 and 7 .....	B-18
Figure B-20: Location and type of noise walls, Sectors 8 and 9 .....	B-19
Figure B-21: SH16 retaining wall concept .....	B-20
Figure B-22: SH20 retaining wall concept .....	B-21
Figure B-23: SH20 retaining wall profiles .....	B-22
Figure B-24: SH20 materials inspiration .....	B-22
Figure B-25: Artist's impression of retaining wall, fence, noise walls, lighting and signage gantry – SH16 .....	B-23
Figure B-26: Visualisation: black finishes to corridor furniture .....	B-23
Figure B-27: Proposed fencing arrangements – SH16 .....	B-24
Figure B-28: Proposed fencing arrangements – SH20 .....	B-24
<b>Section C</b>	
Figure C-1.1: Project sectors .....	C-1
Figure C-1.2: Aerial view of sector 1 from the north .....	C-3
Figure C-1.3: Looking west from Te Atatu Road .....	C-3
Figure C-1.4: Henderson Creek and connecting off-road path .....	C-3
Figure C-1.5: Mature trees lining the motorway .....	C-3
Figure C-1.6: Existing residential dwellings adjacent the corridor .....	C-3
Figure C-1.7: Existing interface with Jack Colvin Park .....	C-3
Figure C-1.8: Sports pitch, clubhouse and seating, Jack Colvin Park .....	C-3
Figure C-1.9: Henderson Creek existing plan .....	C-4
Figure C-1.10: Henderson Creek concept plan .....	C-5
Figure C-1.13: Northern boundary section at halfway line of main playing pitch .....	C-6
Figure C-1.11: Future cross-section at CH5850 .....	C-6
Figure C-1.12: Future cross-section at CH6075 .....	C-6
Figure C-1.14: Northern boundary section at CH5950 .....	C-6

Figure C-1.15: Photo 1–1 Existing view east, located west and south of the Whau River.....	C-7	Figure C-2.5: Whau River existing plan .....	C-18
Figure C-1.17: Photo 1–3 View north adjacent to Te Atatu Road, south of the motorway .....	C-7	Figure C-2.6: Whau River concept plan.....	C-19
Figure C-1.16: Photo 1–2 Panorama based on existing view from Te Atatu overbridge.....	C-7	Figure C-2.7: Concept sketch of future bridge separation at Whau River (View 3) .....	C-20
Figure C-1.18: Photo 1–4 View north towards pedestrian underpass and cloverleaf ramp .....	C-7	Figure C-2.8: Engineering arrangement proposals, Whau River bridges .....	C-20
Figure C-1.19: Photo 1–5 Existing view south of overbridge and cloverleaf ramp.....	C-7	Figure C-2.9: Concept design, pedestrian and cycle bridge.....	C-20
Figure C-1.20: Te Atatu Interchange (i) existing plan.....	C-8	Figure C-2.10: Proposed vehicle safety barrier.....	C-20
Figure C-1.21: Te Atatu Interchange (ii) concept plan .....	C-9	Figure C-2.11: Visualisation of view at Rosebank Domain (View 4).....	C-20
Figure C-1.22: Te Atatu Interchange (ii) existing plan.....	C-10		
Figure C-1.23: Te Atatu Interchange (ii) concept plan .....	C-11	Figure C-3.1: Aerial view of Sector 3 from the north.....	C-21
Figure C-1.24: Te Atatu Interchange (ii) concept plan – hard elements.....	C-12	Figure C-3.4: Photo 3–1 Existing view eastwards approaching Patiki overbridge on off-road route ...	C-21
Figure C-1.25: Visual of proposed view eastwards from Te Atatu overbridge (View 1) .....	C-13	Figure C-3.3: Photo 3–2 Existing view westwards from Patiki Photo.....	C-21
Figure C-1.26: Concept sketch of proposed view from southwest of Whau bridge (View 2) .....	C-13	Figure C-3.2: Photo 3–3 Existing view eastwards immediately west of Patiki Road on off-road route .....	C-21
Figure C-1.27: Future cross-section at Te Atatu westbound off-ramp compared with existing arrangement.....	C-14	Figure C-3.5: Patiki Road existing plan .....	C-22
Figure C-1.29: Future cross-section at interface between Alwyn Avenue, cycleway and westbound traffic .....	C-14	Figure C-3.6: Patiki Road concept plan .....	C-23
Figure C-1.30: Future cross-section of Te Atatu Road bridges, looking south .....	C-14	Figure C-3.8: New cycleway bridge at Patiki Road. ....	C-24
Figure C-1.28: Future cross-section at offramp with Titoki Street property interface .....	C-14	Figure C-3.7: New bridge arrangement over Patiki Road on-ramp .....	C-24
Figure C-1.31: Bridge balustrade concept – detail for Te Atatu Road bridge .....	C-15	Figure C-3.9: Photo 3–4 Existing cycleway boardwalk underneath Rosebank off-ramp .....	C-25
Figure C-1.32: Long section through the optional underpass, showing concept treatment .....	C-16	Figure C-3.10: Photo 3–5 Existing view westbound, between Rosebank ramps.....	C-25
Figure C-1.33: Concept plan of the optional underpass connection.....	C-16	Figure C-3.11: Photo 3–6 Existing view westbound, between Rosebank ramps.....	C-25
Figure C-1.34: Impression of the optional southern underpass entrance showing draft concept treatment, daytime .....	C-16	Figure C-3.12: Rosebank Road existing plan .....	C-26
Figure C-1.35: Impression of the optional southern underpass entrance showing draft concept treatment, night-time .....	C-16	Figure C-3.13: Rosebank Road concept plan.....	C-27
Figure C-1.36: Potential future Milich Avenue - Jack Colvin Park footbridge – preferred concept Option, Cable-stayed curved plan.....	C-17	Figure C-3.14: Detail for future cycleway boardwalk under Rosebank off-ramp.....	C-28
Figure C-1.37: Potential future Milich Avenue - Jack Colvin Park footbridge - secondary concept option, high truss, straight plan .....	C-18	Figure C-3.15: Future retaining wall west of Rosebank ramps.....	C-28
		Figure C-3.16: Enlargement of future cross section at Rosebank off-ramp (section C) .....	C-29
		Figure C-3.18: Future cross-section immediately west of Rosebank Road (section B).....	C-29
		Figure C-3.17: Future cross-section at Rosebank off-ramp (section C).....	C-29
Figure C-2.1: Aerial view of the sector 2 from the north.....	C-17		
Figure C-2.2: Photo 2–1 Existing view to the north adjacent Rosebank Domain on off-road route....	C-17	Figure C-4.2: Aerial view of sector 4 from the north .....	C-31
Figure C-2.3: Photo 2–2 Existing view westwards adjacent to Rosebank Domain .....	C-17	Figure C-4.3: Photo 4–1 Existing view west on Traherne Island.....	C-31
Figure C-2.4: Photo 2–3 Existing view westwards crossing the Whau River on the off-road route .....	C-17	Figure C-4.1: Photo 4–2 Existing view west departing Traherne Island .....	C-31
		Figure C-4.4: Sector 4.2 existing plan .....	C-32
		Figure C-4.5: Sector 4-1 concept plan.....	C-33

# Western Ring Route ▶ Waterview Connection

Figure C-4.6: Future cross-section at Traherne Island compared to existing arrangement (Section D).....	C-34	Figure C-6.11: Photo 6–1 View west along SH16.....	C-53
Figure C-4.7: Photo 4–3 Existing view eastwards approaching Rosebank bridge.....	C-35	Figure C-6.12: Photo 6–2 View east along SH16 from Carrington Road bridge.....	C-53
Figure C-4.8: Photo 4–4 Existing view westwards after Rosebank bridge on the off-road route.....	C-35	Figure C-6.13: Photo 6–3 Carrington Road, where the cycleway links from Sutherland Road.....	C-53
Figure C-4.9: Photo 4–5 Existing view westwards after Rosebank bridge.....	C-35	Figure C-6.14: Sector 6 (i) existing plan.....	C-54
Figure C-4.10: Sector 4.2 existing plan.....	C-36	Figure C-6.15: Waterview to St Lukes – concept plan (western section).....	C-55
Figure C-4.11: Sector 4.2 concept plan.....	C-37	Figure C-6.16: Sector 6 (ii) existing plan.....	C-56
Figure C-4.13: Future cross-section of causeway compared to existing arrangement (Section E).....	C-38	Figure C-6.17: Waterview to St Lukes - concept plan (eastern section).....	C-57
Figure C-4.12: Visual simulation of proposed view east approaching Rosebank bridge (View 5).....	C-38	Figure C-8.18: Typical noise wall elevations, Sector 6.....	C-58
Figure C-4.14: Photo 4–6 Existing view west approaching Rosebank bridge on the off-road route.....	C-39		
Figure C-4.15: Photo 4–7 Existing view west on Rosebank bridge.....	C-39	Figure C-7.1: Sector 7 existing plan.....	C-62
Figure C-4.16: Photo 4–8 Existing view to Rosebank Bridge from Eric Armishaw Park.....	C-39	Figure C-7.2: Photo 7–1 View from Waterview Primary School north towards proposed interchange.....	C-63
Figure C-4.17: Sector 4.3 existing plan.....	C-40	Figure C-7.4: Photo 7–3 View from Herdman Street towards Waterview Primary School.....	C-63
Figure C-4.18: Sector 4.3 concept plan.....	C-41	Figure C-7.5: Photo 7–4 Six metre high waterfall on Oakley Creek.....	C-63
Figure C-4.21: Future pedestrian and cycle bridge detailing.....	C-42	Figure C-7.3: Photo 7–2 Oakley Creek walkway, showing recent revegetation planting and pathway works.....	C-63
Figure C-4.22: Future cross-section at eastern end of route (section F).....	C-42	Figure C-7.6: Photo 7–5 Saxon Reserve.....	C-63
Figure C-4.19: Visual simulation of proposed view west approaching Rosebank bridge (View 6).....	C-42	Figure C-7.7: Artist’s impression of ventilation building and stack – Great North Road option (Concept Option A).....	C-64
Figure C-4.20: Concept sketch of future view to north-west from Waterview (View 7).....	C-42	Figure C-7.8: Ventilation building – location plan (Concept Option B).....	C-65
		Figure C-7.9: Ventilation building – Great North Road (Concept Option A); basement level.....	C-66
Figure C-5.1: Photo 5–1 View towards the proposed Great North Road interchange from Eric Armishaw Reserve.....	C-43	Figure C-7.10: Ventilation building – Great North Road (Concept Option A); ground level plan.....	C-67
Figure C-5.2: Sector 5 existing plan.....	C-44	Figure C-7.11: Ventilation building – Option A; cross section.....	C-67
Figure C-5.3: Photo 5–2 View towards Great North Road interchange from the end of Maryland Street.....	C-45	Figure C-7.12: Ventilation building – Oakley Reserve location plan (Concept Option B).....	C-68
Figure C-5.4: Photo 5–3 Elevated view of Great North Road interchange from Alberta Street.....	C-45	Figure C-7.13: Ventilation building – Concept Option B plans: Fan Room level and Service level.....	C-69
Figure C-5.5: Sector 5 concept plan.....	C-46	Figure C-7.14: Ventilation building – Concept Option B long section.....	C-69
Figure C-5.6: Sector 5 future sections A-A.....	C-48	Figure C-7.15: Oakley Bridge – location and concept plan.....	C-70
Figure C-5.7: Sector 5 future sections B-B.....	C-48	Figure C-7.16: Oakley Bridge – 3D views showing possible future form and setting in the landscape.....	C-71
Figure C-5.8: Sector 5 future sections @ CH500: Waterview Park.....	C-49	Figure C-7.17: Saxon Reserve - existing plan.....	C-72
Figure C-5.9: Sector 5 future sections @ CH500: Waterview Park.....	C-49	Figure C-7.18: Saxon Reserve - concept plan.....	C-72
Figure C-5.10: Oakley Creek landscape concept plan.....	C-50		
Figure C-5.11: Oakley Creek concept sections.....	C-51		
Figure C-5.12: Concept for flyovers at Great North Road Interchange.....	C-52		

Figure C-8.1: Photo 8–1 expansive views over Heron Park towards the Waitakere ranges.....	C-75	Figure C-9.9: Photo 9–9 View east from proposed Richardson Road bridge location.....	C-87
Figure C-8.2: Photo 8–2 Access from Oakley Creek to Great North Road and Heron Park is narrow with limited surveillance.....	C-75	Figure C-9.7: Photo 9–7 View down Richardson Road towards Stoddard Road shops (proposed Richardson Road bridge location).....	C-87
Figure C-8.3: Photo 8–3 Phyllis Reserve is a large grassed active recreation reserve built on a former landfill site.....	C-75	Figure C-9.10: Alan Wood Reserve existing plan.....	C-88
Figure C-8.4: Photo 8–4 The existing pathway network through Phyllis Reserve is narrow and suffering from erosion in places.....	C-75	Figure C-9.11: Option A Alan Wood Reserve concept plan with buried ventilation building.....	C-89
Figure C-8.5: Phyllis Reserve existing plan.....	C-76	Figure C-9.12: Option A2 Alan Wood Reserve concept plan with above-ground ventilation building.....	C-91
Figure C-8.6: Phyllis Reserve – Concept Option A.....	C-77	Figure C-9.13: Option B Alan Wood Reserve concept plan - longer term partnership option.....	C-92
Figure C-8.7: Phyllis Reserve – Concept Option B (Council preferred option).....	C-78	Figure C-9.14: Alan Wood Reserve – key map for sections.....	C-93
Figure C-8.10: Phyllis pedestrian bridge concept –elevation.....	C-80	Figure C-9.15: Alan Wood Reserve – future section @ chainage 700.....	C-94
Figure C-8.8: View 1, looking west from Phyllis Reserve.....	C-80	Figure C-9.16: Alan Wood Reserve – future section @chainage 1100.....	C-95
Figure C-8.9: View 2, looking west along the bridge.....	C-80	Figure C-9.17: Alan Wood Reserve – future section @ chainage 1200.....	C-96
Figure C-8.11: View 3, looking up from Oakley Creek.....	C-80	Figure C-9.18: Alan Wood Reserve– future section @ chainage 1300.....	C-97
Figure C-8.12: Harbutt Reserve existing plan.....	C-81	Figure C-9.19: Alan Wood Reserve – future section @ chainage 1400.....	C-98
Figure C-8.13: Photo 8–5 Harbett Reserve suffers from a lack of connectivity and passive surveillance.....	C-81	Figure C-9.20: Alan Wood Reserve – future section @ chainage 1500.....	C-99
Figure C-8.14: Photo 8–6 The western rail line looking towards Mt Albert Pak n Save.....	C-81	Figure C-9.21: Alan Wood Reserve – future section @ chainage 1600.....	C-100
Figure C-8.15: Photo 8–7 View over the western rail line towards the proposed Soljak Place Overbridge.....	C-81	Figure C-9.22: Alan Wood Reserve – future section @ chainage 1700.....	C-101
Figure C-8.16: Harbutt Reserve concept plan.....	C-82	Figure C-9.23: Former Goldstar site proposed concept design.....	C-102
Figure C-8.18: Soljak Pedestrian Bridge – future view 2 along Soljak Place.....	C-83	Figure C-9.24: Southern portal approach Concept Option A – artist’s impression looking north..	C-103
Figure C-8.17: Soljak Pedestrian Bridge – future view 1 north over rail line.....	C-83	Figure C-9.25: Southern ventilation stack context.....	C-104
Figure C-8.19: Soljak Pedestrian Bridge – future view 3 south through Harbutt Reserve.....	C-83	Figure C-9.26: Southern ventilation building Concept Option A – location plan.....	C-104
Figure C-9.1: Photo 9–1 Hendon Avenue looking towards the Stewart Road intersection.....	C-85	Figure C-9.27: Southern ventilation building Concept Option A – floor plan.....	C-105
Figure C-9.2: Photo 9–2 View looking south along Olympus Place towards Alan Wood Reserve....	C-86	Figure C-9.28: Southern ventilation building Concept Option A – long sections.....	C-106
Figure C-9.4: Photo 9–4 View south over Alan Wood Reserve towards Mount Albert (proposed Olympus Bridge location).....	C-86	Figure C-9.29: Southern ventilation building Concept Option A – cross section.....	C-107
Figure C-9.5: Photo 9–5 View west over leased Council playing field on NZTA land bordering Hendon Park.....	C-86	Figure C-9.30: Southern Ventilation Building Concept Option B – location plan.....	C-108
Figure C-9.3: Photo 9–3 Existing training field at Alan Wood Reserve.....	C-86	Figure C-9.31: Southern Ventilation Building Concept Option B – visual simulation view 1 from Alan Wood Reserve.....	C-109
Figure C-9.6: Photo 9–6 Alan Wood Reserve looking west along proposed motorway alignment ..	C-87	Figure C-9.32: Southern Ventilation Building Concept Option B – visual simulation view 2 from the Avondale Motorpark.....	C-110
Figure C-9.8: Photo 9–8 Existing Stoddard Road shopping centre looking up Richardson Road towards proposed bridge.....	C-87	Figure C-9.33: Southern Ventilation Building Concept Option B – visual simulation view 3 from Hendon Park walkway.....	C-111
		Figure C-9.35: Olympus Pedestrian Bridge – concept elevation.....	C-112
		Figure C-9.34: Olympus Pedestrian Bridge – concept plan.....	C-112
		Figure C-9.36: Olympus Pedestrian Bridge – artist’s impressions.....	C-113

# Western Ring Route ▶ Waterview Connection

Figure C-9.37: Pedestrian bridges over stream – perspective sketches .....	C-114	Figure C10-17: Maioro Interchange existing plan .....	C-129
Figure C-9.39: Hendon Pedestrian Bridge concept – elevation.....	C-115	Figure C10-18: Maioro Interchange proposed plan .....	C-130
Figure C-9.38: Hendon Pedestrian Bridge – concept plan.....	C-115	Figure C10-19: Maioro Interchange proposed connections .....	C-132
Figure C-9.40: Hendon Pedestrian Bridge – artist’s impression – view 1, looking east from footpath.....	C-116	Figure C10-20: Maioro Interchange proposed Section A–A .....	C-133
Figure C-9.41: Hendon Pedestrian Bridge – artist’s impression – view 2, looking west along bridge .....	C-116	Figure C10-21: Maioro Interchange proposed Section B–B.....	C-134
Figure C-9.42: Richardson Road bridge context plan.....	C-117	Figure C10-22: Maioro Interchange proposed Sections C–C to F-F.....	C-135
Figure C-9.43: Richardson Road bridge concept – view looking east towards Stoddard Road along the preferred 18m wide bridge .....	C-117	Figure C10-23: Maioro Interchange – perspective views of Maioro Street overbridge.....	C-136
Figure C-9.44: Richardson Road bridge concept– view looking north with c ycleway running underneath .....	C-118	Figure C10-24: Maioro Interchange – perspective sketch, view looking north .....	C-137
Figure C-9.45: Richardson Road bridge – design for barrier.....	C-119	Figure C10-25: Richardson Road bridge– plan, elevation and part section.....	C-138
Figure C-9.46: Richardson Road bridge – design for barrier.....	C-119	Figure C10-26: Maioro Interchange – noise wall concept: elevations .....	C-139
Figure C-9.47: Richardson Road bridge structure .....	C-120	Figure C10-27: Maioro Interchange – noise wall panel types.....	C-140
Figure C-9.48: Richardson Road to Maioro Street – short term design proposal .....	C-121	Figure C10-28: Maioro Interchange – retaining wall concepts: elevation and perspectives .....	C-141
Figure C-9.49: Richardson Road to Maioro Street – long term indicative concept.....	C-122	Figure C10-39: Maioro Interchange – retaining wall panels.....	C-142
Figure C-9.50: Alan Wood Reserve – noise wall concept : elevations.....	C-123		
Figure C-9.51: Alan Wood Reserve – noise wall concept : details .....	C-124		
Figure C10-9: Photo 10–1 The unnamed tributary of Oakley Creek at the back of the Stoddard Road industrial properties.....	C-127		
Figure C10-10: Photo 10–2 View from Christ the King School towards existing Maioro Street noise wall .....	C-127		
Figure C10-11: Photo 10–3 View west along Stoddard Road towards the proposed Maioro Street intersection .....	C-127		
Figure C10-12: Photo 10–4 View towards existing noise walls at the end of Ernie Pinches Street .....	C-128		
Figure C10-13: Photo 10–5 View of existing noise walls and planting at Maioro Street extension.....	128		
Figure C10-14: Photo 10–6 View west towards proposed Maioro interchange from Ernie Pinches Street .....	C-128		
Figure C10-15: Photo 10–7 View from Ernie Pinches Street towards temporary roundabout and pedestrian overbridge.....	C-128		
Figure C10-16: Photo 10–8 View from pedestrian overbridge west towards the proposed interchange.....	C-128		