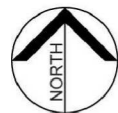


- KEY**
- EARTH BUND 5M HIGH
 - PORTLAND BARRIER 1.1M HIGH
 - PLY / BATTEN WALLS, VARIABLE HEIGHT
 - CONCRETE WALLS, VARIABLE HEIGHT
 - CONSTRUCTION FOOTPRINT



FOR REVIEW
NOT FOR CONSTRUCTION

Base level: MSL AUCK. VERT. DATUM 1946	
Grid Reference: MT EDEN 2000	
Originator No.	
Project No. 20.111-3-D-C-918-201	Rev. C

No.	Revision	By	Chk	Appd	Date
C	ISSUED FOR DC.1A/RC.3 COMPLIANCE	JRH			01.09.11
B	ISSUE FOR SRT/NZTA REVIEW	JRH			09.03.11
A	ISSUE FOR SRT/NZTA REVIEW	JRH			08.03.11

Drawing Originator:

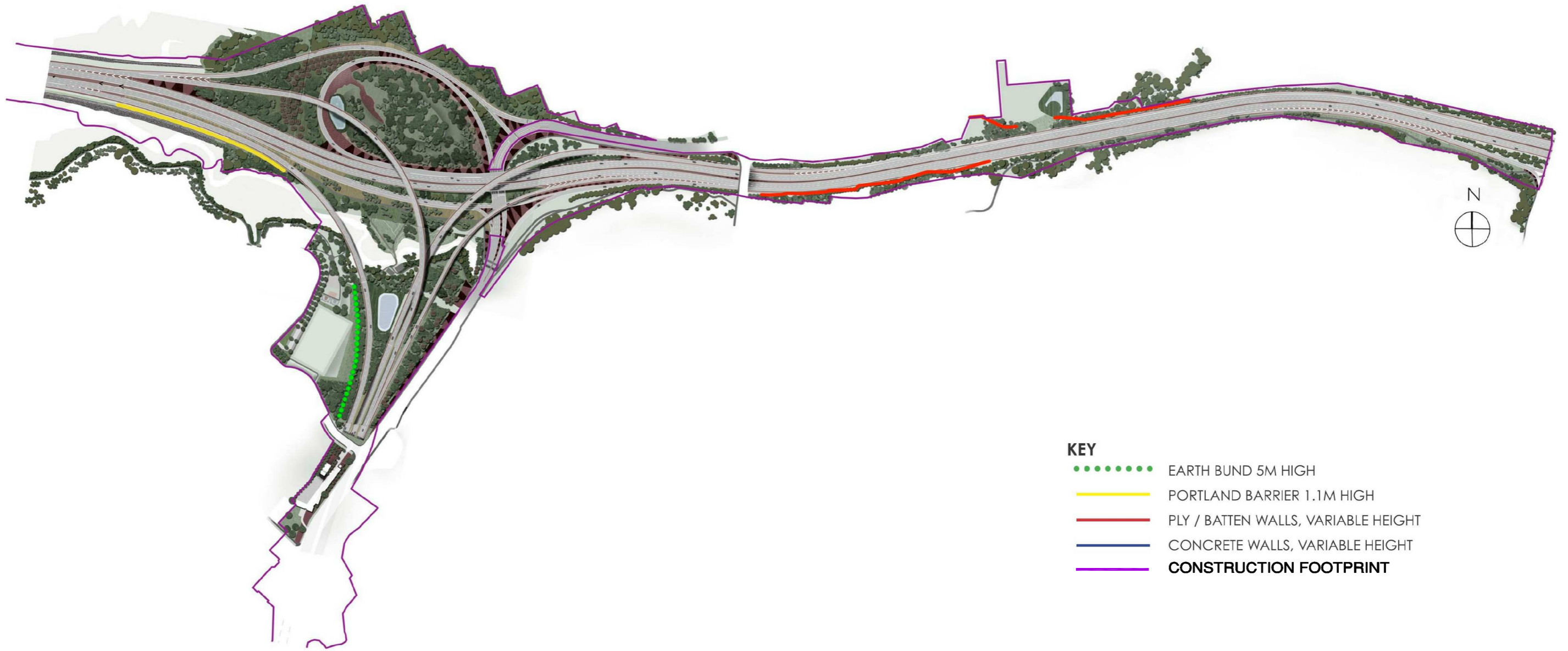


Original Scale (A1) N.T.S	Designer TR
Reduced Scale (A3) N.T.S	Reviewer BM
	Drafting Checked -
	Consultant Approval AL
	Received by Beca



Project:
**WATERVIEW CONNECTION
PROJECT
SH16 / SH20**

Title:
**LOCATION OF NOISE BARRIER
CONCEPTS
SECTOR 1**



- KEY**
- EARTH BUND 5M HIGH
 - PORTLAND BARRIER 1.1M HIGH
 - PLY / BATTEN WALLS, VARIABLE HEIGHT
 - CONCRETE WALLS, VARIABLE HEIGHT
 - CONSTRUCTION FOOTPRINT

No.	Revision	By	Chk	Appd	Date
C	ISSUED FOR DC.1A/RC.3 COMPLIANCE	JRH			01.09.11
B	ISSUE FOR SRT/NZTA REVIEW	JRH			09.03.11
A	ISSUE FOR SRT/NZTA REVIEW	JRH			08.03.11

Drawing Originator:		Beca	
Original Scale (A1)	Designer	DL	
N.T.S	Reviewer	BM	
Reduced Scale (A3)	Drafting Checked	-	
N.T.S	Consultant Approval	AL	
	Received by Beca		



Project: **WATERVIEW CONNECTION PROJECT SH16 / SH20**

Title: **LOCATION OF NOISE BARRIER CONCEPTS SECTORS 5 - 7**

FOR REVIEW
NOT FOR CONSTRUCTION

Base level:
MSL AUCK. VERT. DATUM 1946

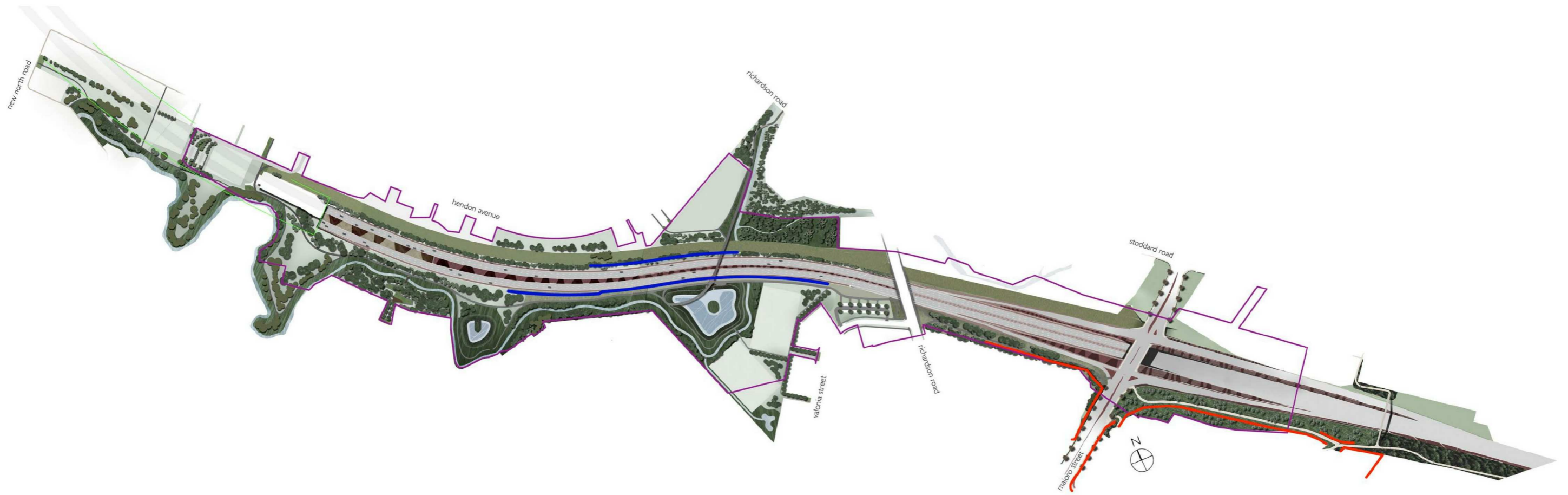
Grid Reference:
MT EDEN 2000

Originator No. _____

Project No. **20.111-3-D-N-918-202** Rev. **C**

DO NOT SCALE

IF IN DOUBT ASK.



KEY

- EARTH BUND 5M HIGH
- PORTLAND BARRIER 1.1M HIGH
- PLY / BATTEN WALLS, VARIABLE HEIGHT
- CONCRETE WALLS, VARIABLE HEIGHT
- CONSTRUCTION FOOTPRINT

No.	Revision	By	Chk	Appd	Date
C	ISSUED FOR DC.1A/RC.3 COMPLIANCE	JRH			01.09.11
B	ISSUE FOR SRT/NZTA REVIEW	JRH			09.03.11
A	ISSUE FOR SRT/NZTA REVIEW	JRH			08.03.11

Drawing Originator:		Beca	
Original Scale (A1)	Designer	DL	
N.T.S	Reviewer	BM	
Reduced Scale (A3)	Drafting Checked	-	
N.T.S	Consultant Approval	AL	
	Received by Beca		



Project: **WATERVIEW CONNECTION PROJECT SH16 / SH20**

Title: **LOCATION OF NOISE BARRIER CONCEPTS SECTOR 9**

FOR REVIEW
NOT FOR CONSTRUCTION

Base level:
MSL AUCK. VERT. DATUM 1946

Grid Reference:
MT EDEN 2000

Originator No. _____

Project No. **20.111-3-D-N-918-203** Rev. **C**



No.	Revision	By	Chk	Appd	Date
C	ISSUED FOR DC.1A/RC.3 COMPLIANCE	JRH			01.09.11
B	ISSUE FOR SRT/NZTA REVIEW	JRH			09.03.11
A	ISSUE FOR SRT/NZTA REVIEW	JRH			08.03.11

Drawing Originator:



Original Scale (A1)	Designer	TR
N.T.S	Reviewer	BM
Reduced Scale (A3)	Drafting Checked	-
N.T.S	Consultant Approval	AL
	Received by Beca	



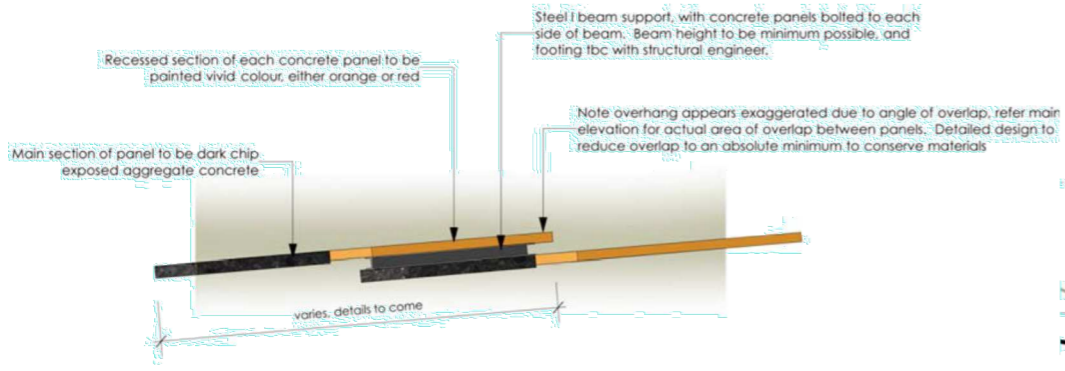
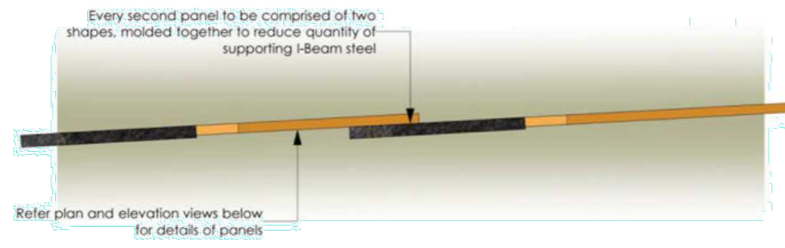
Project: **WATERVIEW CONNECTION PROJECT SH16 / SH20**

Title: **NOISE WALL CONCEPT SH16 SECTOR 1**

FOR REVIEW
NOT FOR CONSTRUCTION

Base level:	
MSL AUCK. VERT. DATUM 1946	
Grid Reference:	
MT EDEN 2000	
Originator No.	
Project No.	Rev.
20.11-3-D-C-918-204	C

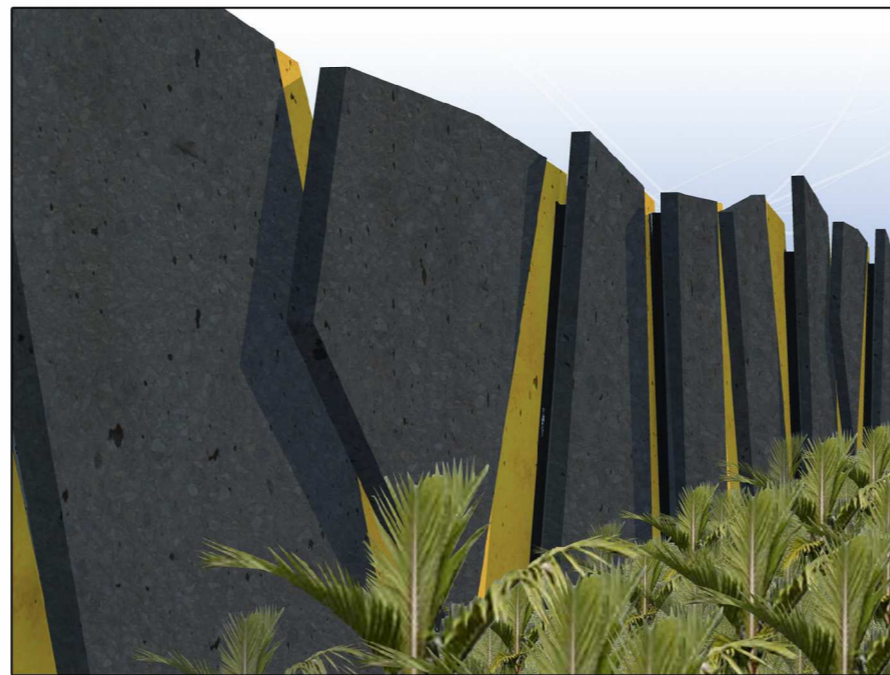
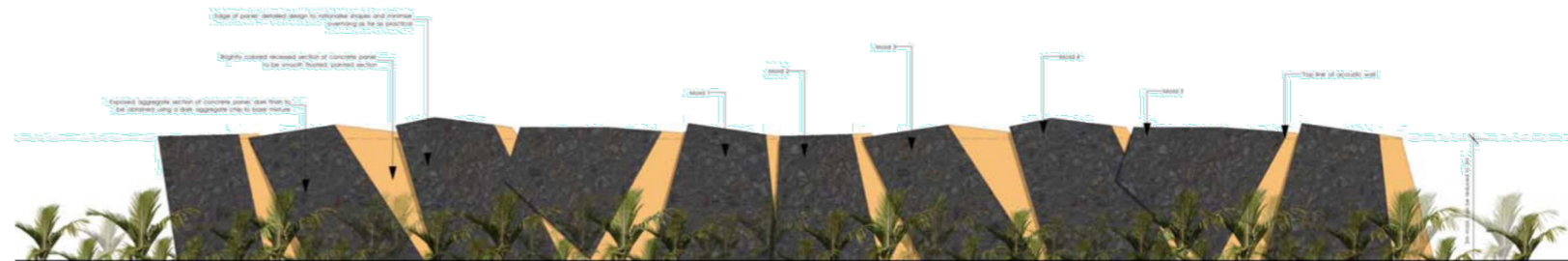
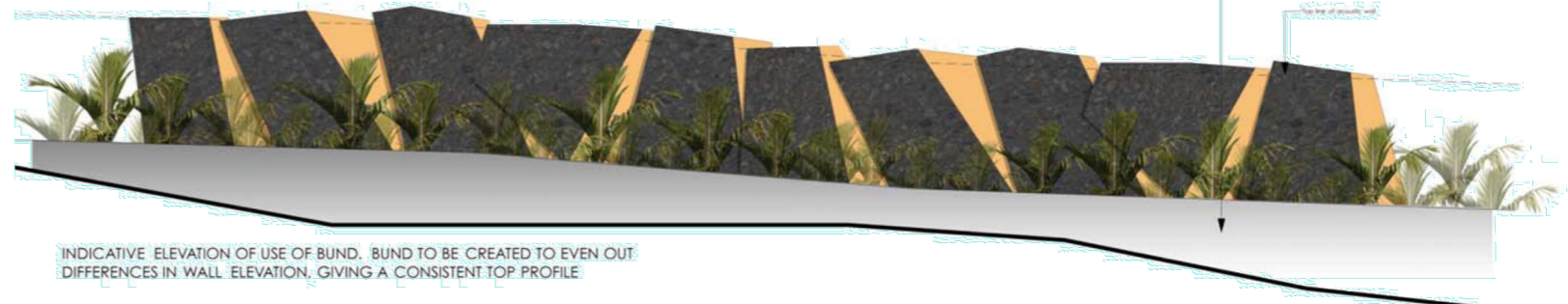
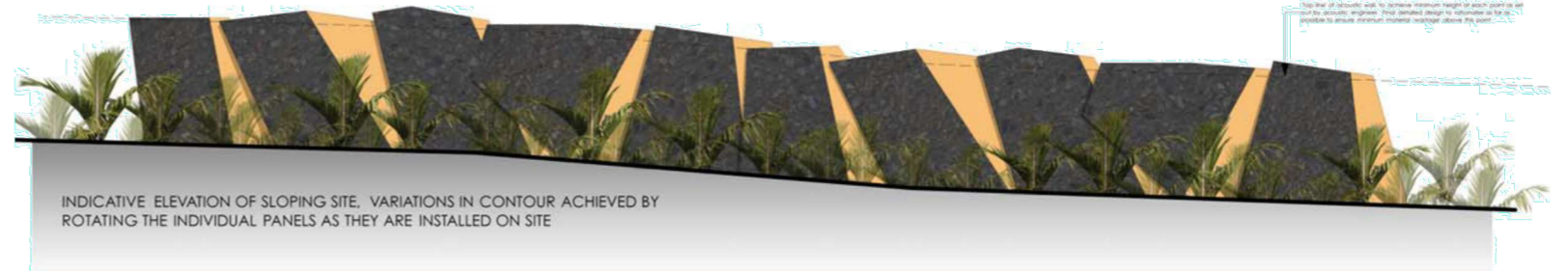
PLAN VIEW OF "FUSED" MODULE



PLAN VIEW OF TYPICAL MODULE



ELEVATION VIEW OF TYPICAL MODULE



No.	Revision	By	Chk	Appd	Date
C	ISSUED FOR DC.1A/RC.3 COMPLIANCE	JRH			01.09.11
B	ISSUE FOR SRT/NZTA REVIEW	JRH			09.03.11
A	ISSUE FOR SRT/NZTA REVIEW	JRH			08.03.11

Drawing Originator:

Original Scale (A1)	Designer	DL
N.T.S	Reviewer	BM
Reduced Scale (A3)	Drafting Checked	-
N.T.S	Consultant Approval	AL
	Received by Beca	

WAKA KOTAHI

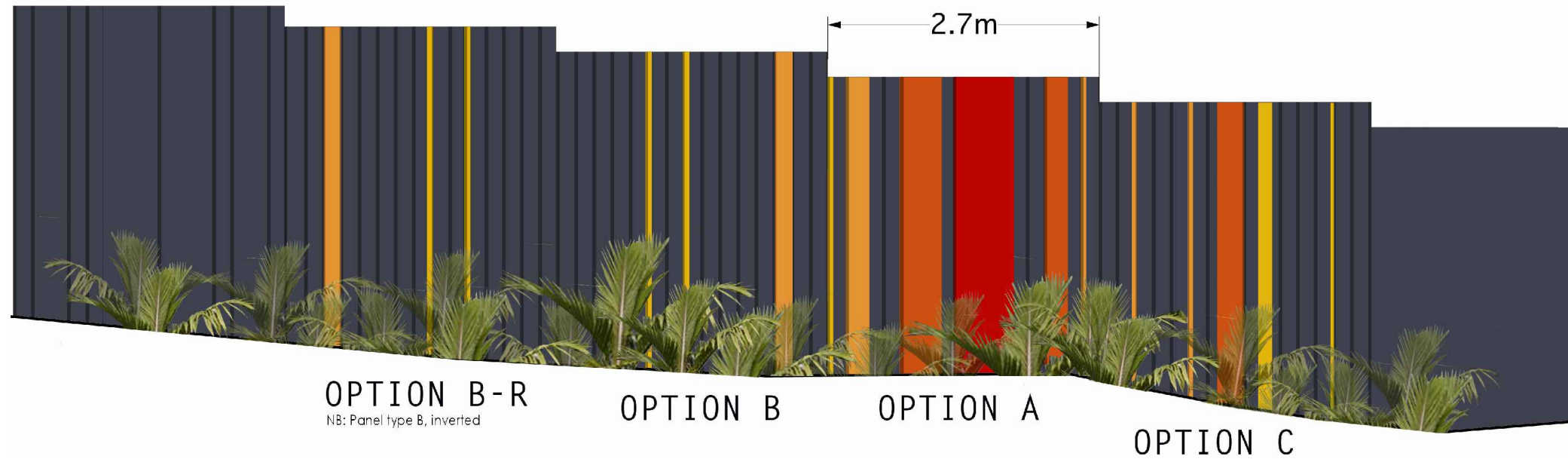
Project: **WATERVIEW CONNECTION PROJECT**
SH16 / SH20

Title: **NOISE WALL CONCEPT SH20 TYPE 1 SECTOR 9**

FOR REVIEW
NOT FOR CONSTRUCTION

Base level: **MSL AUCK. VERT. DATUM 1946**
Grid Reference: **MT EDEN 2000**

Originator No. _____
Project No. **20.111-3-D-N-918-205** Rev. **C**



OPTION B-R
NB: Panel type B, inverted

OPTION B

OPTION A

OPTION C

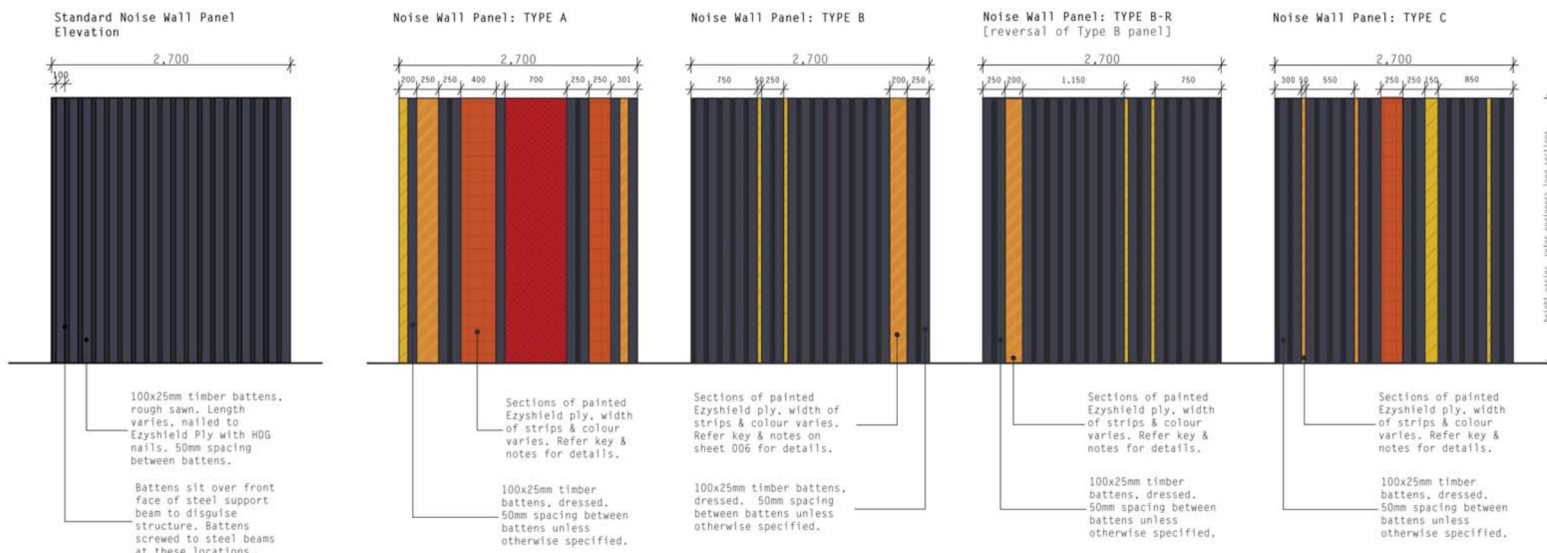


CHANGE IN LEVEL TO BE ACHIEVED USING A STEPPED ARRANGEMENT, IN 100MM INTERVALS - NO FALL BETWEEN PANELS LESS THAN 100MM OR MORE THAN 400MM EXCEPT IN SPECIFIC INSTANCES, REFER ENGINEER'S LONG SECTIONS

Figure B-17: SH20 Noise wall type 2 - long elevations

INDICATIVE LONG SECTION SHOWING SPACING AND TYPICAL RHYTHM OF PANEL TYPES. NB NOISE WALL 3 IS EXAMPLE SHOWN
Refer also sheet L-5700-006 for cladding details and engineers drawing set for long sections of each noise wall

- KEY
- Resene 'Del Toro'
 - Resene 'Chilean Fire'
 - Resene 'California'
 - Resene 'Supernova'
 - Resene 'Nero'



FOR REVIEW
NOT FOR CONSTRUCTION

Base level: MSL AUCK. VERT. DATUM 1946	
Grid Reference: MT EDEN 2000	
Originator No.	
Project No. 20.111-3-D-N-918-206	Rev. C

No.	Revision	By	Chk	Appd	Date
C	ISSUED FOR DC.1A/RC.3 COMPLIANCE	JRH			01.09.11
B	ISSUE FOR SRT/NZTA REVIEW	JRH			09.03.11
A	ISSUE FOR SRT/NZTA REVIEW	JRH			08.03.11

Drawing Originator:
Beca

Designer	DL
Reviewer	BM
Drafting Checked	-
Consultant Approval	AL
Received by Beca	

NZ TRANSPORT AGENCY
WAKA KOTAHU

Project: **WATERVIEW CONNECTION PROJECT SH16 / SH20**

Title: **NOISE WALL CONCEPT SH20 TYPE 2**