

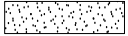




NOTE:
 These plans are intended to show the location and extent of the proposed Open Space Restoration Plan areas as relating to adjacent property boundaries only. Some key connections and other site features are shown for context, but refer to the proposed Open Space Conditions (OS.1-OS.14) and the ULD Plans (810.200-229) for full details of requirements for each open space area.

KEY:	
	Proposed designation boundary
	Proposed Open Space Restoration Plan boundary
	Proposed Open Space Restoration Plan area

**FOR APPROVAL
 NOT FOR CONSTRUCTION**

Base level: MSLAUCK. VERT. DATUM 1946	
Grid Reference: MT EDEN 2000	
Originator No.	
Project No. 20.1.11-3-D-L-810-300	Rev. A

No.	Revision	By	Chk	Appd	Date
A	ISSUE FOR BOARD OF INQUIRY	D.J.L.			21.03.11

Drawing Originator:



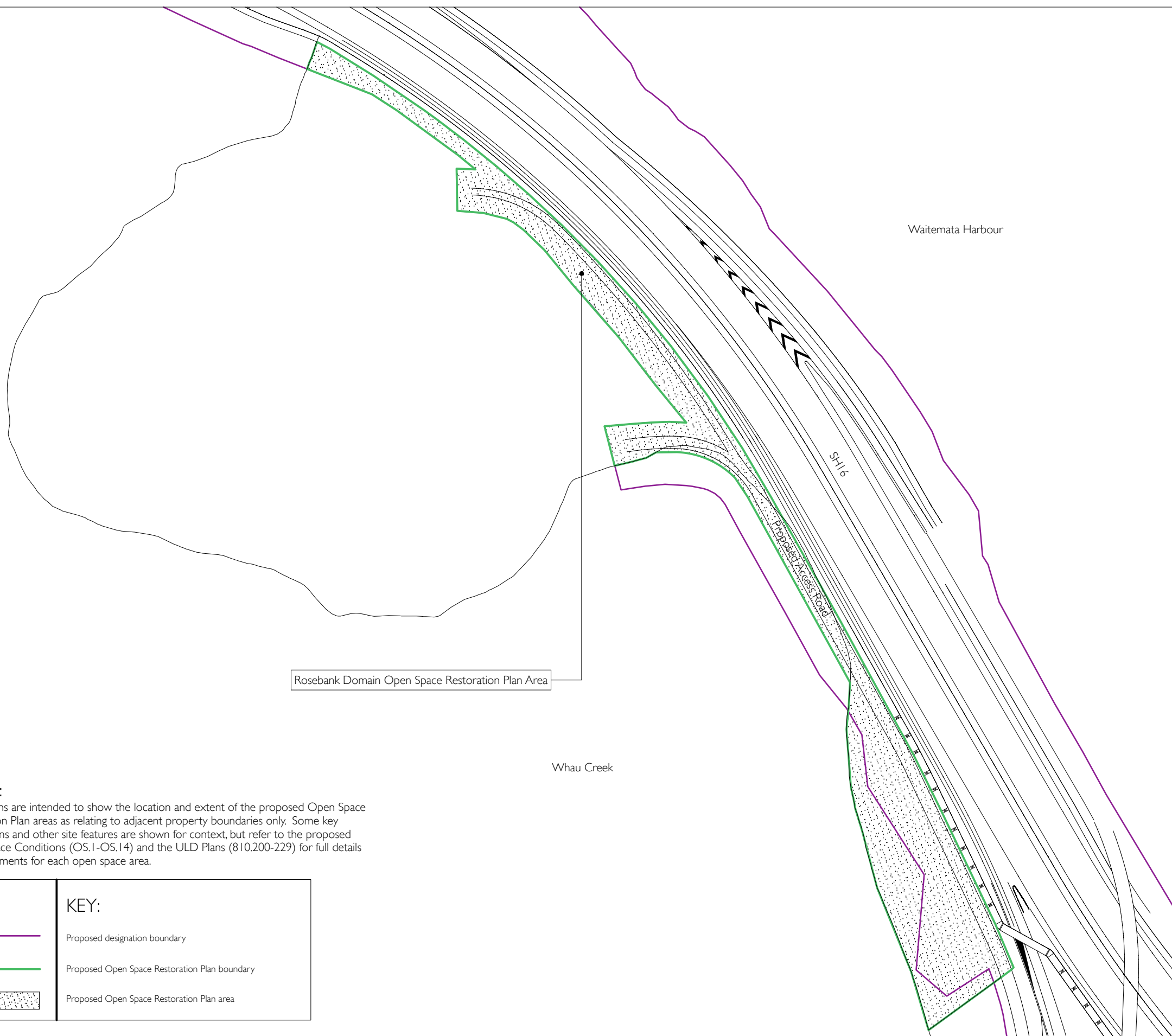
STEPHEN BROWN ENVIRONMENTS

Original Scale (A1)	Designer
Reduced Scale (A3) 1:2000	Reviewer
	Drafting Checked
	Consultant Approval
	Received by Beca



Project: WATERVIEW CONNECTION PROJECT
 SH16 / SH20

Title: Jack Colvin Park Open Space Restoration Plan Area



Rosebank Domain Open Space Restoration Plan Area

Whau Creek




Waitemata Harbour

SH16

Proposed Access Road

NOTE:

These plans are intended to show the location and extent of the proposed Open Space Restoration Plan areas as relating to adjacent property boundaries only. Some key connections and other site features are shown for context, but refer to the proposed Open Space Conditions (OS.1-OS.14) and the ULD Plans (810.200-229) for full details of requirements for each open space area.

KEY:	
	Proposed designation boundary
	Proposed Open Space Restoration Plan boundary
	Proposed Open Space Restoration Plan area

FOR APPROVAL
NOT FOR CONSTRUCTION

Base level: MSLAUCK. VERT. DATUM 1946	
Grid Reference: MT EDEN 2000	
Originator No.	
Project No. 20.1.11-3-D-L-810-301	Rev. A

No.	Revision	By	Chk	Appd	Date
A	ISSUE FOR BOARD OF INQUIRY	D.J.L.			21.03.11

Drawing Originator:



STEPHEN BROWN ENVIRONMENTS

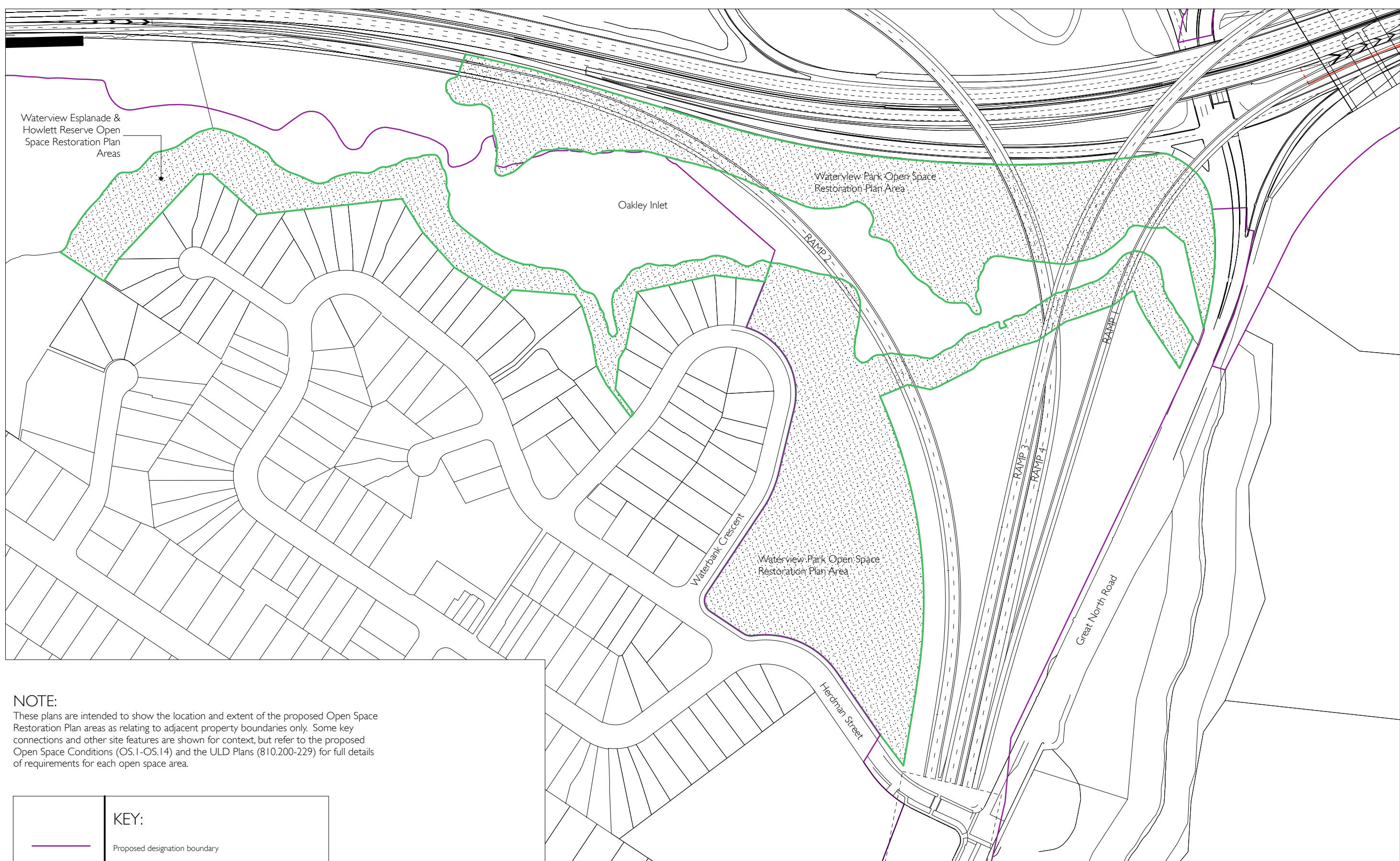
Original Scale (A1)	Designer
Reduced Scale (A3)	Reviewer
1:2000	Drafting Checked
	Consultant Approval
	Received by Beca



NZ TRANSPORT AGENCY
WAKA KOTAHI

Project:
WATERVIEW CONNECTION PROJECT
SH16 / SH20

Title:
Rosebank Domain Open Space Restoration Plan Area



Waterview Esplanade & Howlett Reserve Open Space Restoration Plan Areas

Waterview Park Open Space Restoration Plan Area

Oakley Inlet

Waterview Park Open Space Restoration Plan Area

Waterbank Crescent

Herdman Street

Great North Road

RAMP 2

RAMP 3

RAMP 4

RAMP 1

NOTE:
 These plans are intended to show the location and extent of the proposed Open Space Restoration Plan areas as relating to adjacent property boundaries only. Some key connections and other site features are shown for context, but refer to the proposed Open Space Conditions (OS.1-OS.14) and the ULD Plans (810.200-229) for full details of requirements for each open space area.

KEY:

- Proposed designation boundary
- Proposed Open Space Restoration Plan boundary
- Proposed Open Space Restoration Plan area

FOR APPROVAL
NOT FOR CONSTRUCTION

Base level: MSLAUCK. VERT. DATUM 1946	
Grid Reference: MT EDEN 2000	
Originator No.	
Project No. 20.1.11-3-D-L-810-302	Rev. B

No.	Revision	By	Chk	Appd	Date
B	ISSUED FOR DC.1A/RC.3 COMPLIANCE	NR			18.08.11
A	ISSUE FOR BOARD OF INQUIRY	D.J.L.			21.03.11

Drawing Originator:

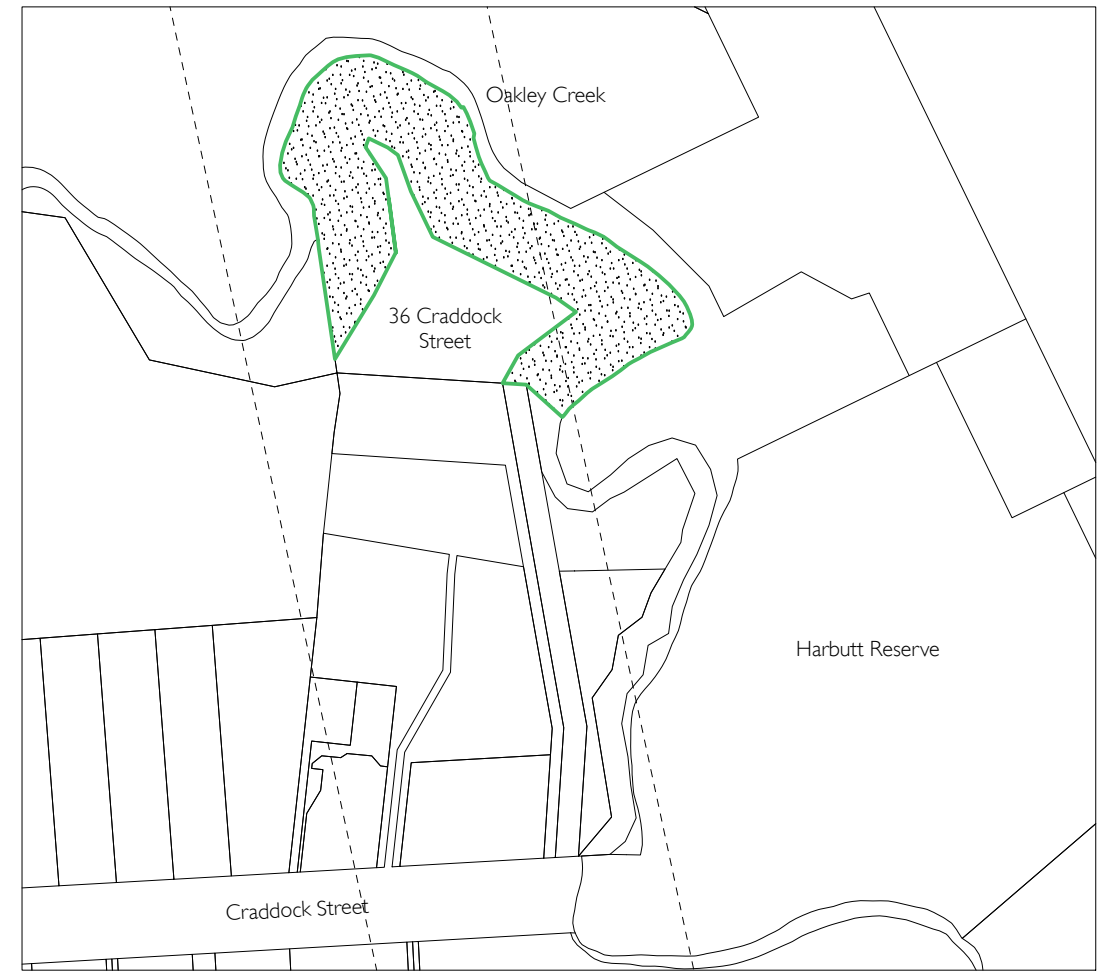
STEPHEN BROWN ENVIRONMENTS

Original Scale (A1)	Designer
Reduced Scale (A3) 1:2500	Reviewer
	Drafting Checked
	Consultant Approval
	Received by Beca

NZ TRANSPORT AGENCY
 WAKA KOTAHĪ

Project: **WATERVIEW CONNECTION PROJECT**
 SH16 / SH20

Title: **Waterview Park Open Space Restoration Plan Area**



36 Craddock Street Esplanade Reserve Inset

KEY:

- Proposed designation boundary
- Proposed Open Space Restoration Plan boundary
- Proposed Open Space Restoration Plan area

NOTE:
 These plans are intended to show the location and extent of the proposed Open Space Restoration Plan areas as relating to adjacent property boundaries only. Some key connections and other site features are shown for context, but refer to the proposed Open Space Conditions (OS.1-OS.14) and the ULD Plans (810.200-229) for full details of requirements for each open space area.

FOR APPROVAL
NOT FOR CONSTRUCTION

Base level: MSLAUCK. VERT. DATUM 1946	
Grid Reference: MT EDEN 2000	
Originator No.	
Project No. 20.1.11-3-D-L-810-303	Rev. B

No.	Revision	By	Chk	Appd	Date
B	ISSUED FOR DC.1A/RC.3 COMPLIANCE	NR			18.08.11
A	ISSUE FOR BOARD OF INQUIRY	D.J.L.			21.03.11

Drawing Originator:

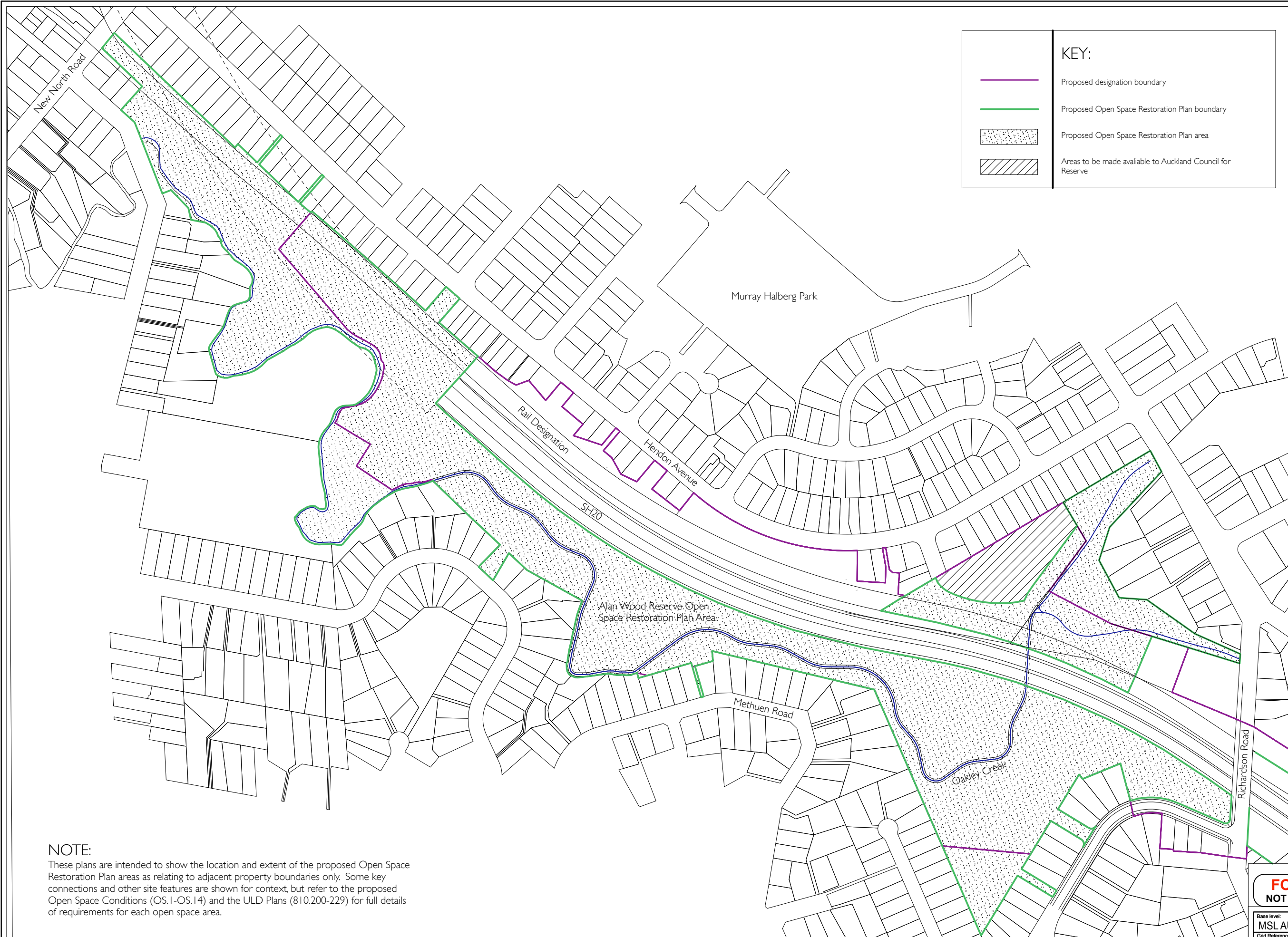
 STEPHEN BROWN ENVIRONMENTS™

Original Scale (A1)	Designer
Reduced Scale (A3)	Reviewer
1:2000	Drafting Checked
	Consultant Approval
	Received by Beca

NZ TRANSPORT AGENCY
 WAKA KOTAHI

WATERVIEW CONNECTION PROJECT
 SH16 / SH20

Waterview Glades & 36 Craddock St Open Space Restoration Plan Areas



NOTE:
 These plans are intended to show the location and extent of the proposed Open Space Restoration Plan areas as relating to adjacent property boundaries only. Some key connections and other site features are shown for context, but refer to the proposed Open Space Conditions (OS.1-OS.14) and the ULD Plans (810.200-229) for full details of requirements for each open space area.

**FOR APPROVAL
 NOT FOR CONSTRUCTION**

Base level: MSLAUCK. VERT. DATUM 1946	
Grid Reference: MT EDEN 2000	
Originator No.	
Project No. 20.1.11-3-D-L-810-304	Rev. B

No.	Revision	By	Chk	Appd	Date
B	ISSUED FOR DC.1A/RC.3 COMPLIANCE	NR			18.08.11
A	ISSUE FOR BOARD OF INQUIRY	D.J.L.			21.03.11

Drawing Originator:

STEPHEN BROWN ENVIRONMENTS

Original Scale (A1)	Designer
Reduced Scale (A3) 1:4000	Reviewer
	Drafting Checked
	Consultant Approval
	Received by Beca

NZ TRANSPORT AGENCY
 WAKA KOTAHĪ

Project:
**WATERVIEW CONNECTION
 PROJECT
 SH16 / SH20**

Title:
**Alan Wood Reserve
 Open Space Restoration
 Plan Area**



KEY:

- Proposed designation boundary
- Proposed Open Space Restoration Plan boundary
- Proposed Open Space Restoration Plan area

NOTE:
 These plans are intended to show the location and extent of the proposed Open Space Restoration Plan areas as relating to adjacent property boundaries only. Some key connections and other site features are shown for context, but refer to the proposed Open Space Conditions (OS.1-OS.14) and the ULD Plans (810.200-229) for full details of requirements for each open space area.

FOR APPROVAL
NOT FOR CONSTRUCTION

Base level: MSLAUCK. VERT. DATUM 1946	
Grid Reference: MT EDEN 2000	
Originator No.	
Project No. 20.1.11-3-D-L-810-306	Rev. A

No.	Revision	By	Chk	Appd	Date
A	ISSUED FOR DC.1A/RC.3 COMPLIANCE				03.08.11

Drawing Originator:

STEPHEN BROWN ENVIRONMENTS

Original Scale (A1)	Designer
Reduced Scale (A3) 1:2000	Reviewer
	Drafting Checked
	Consultant Approval
	Received by Beca

NZ TRANSPORT AGENCY
 WAKA KOTAHĪ

Project: **WATERVIEW CONNECTION PROJECT**
 SH16 / SH20

Title: **Eric Armishaw Park Open Space Restoration Plan Area**