

E7 8/3/11

SH20 SECTOR 7 . PRIVATE RESIDENTIAL VIEWPOINT



Existing View



Visual Simulation

2 Oakley Avenue, Waterview - On Site 25m Stack

EXHIBIT NUMBER " " E7  
Environment Court

2662146.861, 6478941.251, 22.538 - New Zealand Map Grid  
Photographed 09 March 2010 1.34pm

Canon EOS 50D - 17mm (x1.6 Multiplier 27mm)  
Image Projection Method - Rectilinear Perspective

Horizontal Field of View - 120 degrees  
Viewing distances - A1 550mm, A2 389mm, A3 275mm, A4 194mm

Produced by Ms ~~Angela~~ Absalom  
via Mr Allan in Agreement  
COURT REF:  
REGISTRAR:  
DATE: 8/3/11







Existing View



Visual Simulation

## 2 Oakley Avenue, Waterview - On Site 15m Stack

2662146.861, 6478941.251, 22.538 - New Zealand Map Grid  
Photographed 09 March 2010 1.34pm

Canon EOS 50D - 17mm (x1.6 Multiplier 27mm)  
Image Projection Method - Rectilinear Perspective

Horizontal Field of View - 120 degrees  
Viewing distances - A1 550mm, A2 389mm, A3 275mm, A4 194mm







Existing View



Visual Simulation

## 2 Oakley Avenue, Waterview - Off Site 25m Stack

2662146.861, 6478941.251, 22.538 - New Zealand Map Grid  
Photographed 09 March 2010 1.34pm

Canon EOS 50D - 17mm (x1.6 Multiplier 27mm)  
Image Projection Method - Rectilinear Perspective

Horizontal Field of View - 120 degrees  
Viewing distances - A1 550mm, A2 389mm, A3 275mm, A4 194mm







Existing View



Visual Simulation

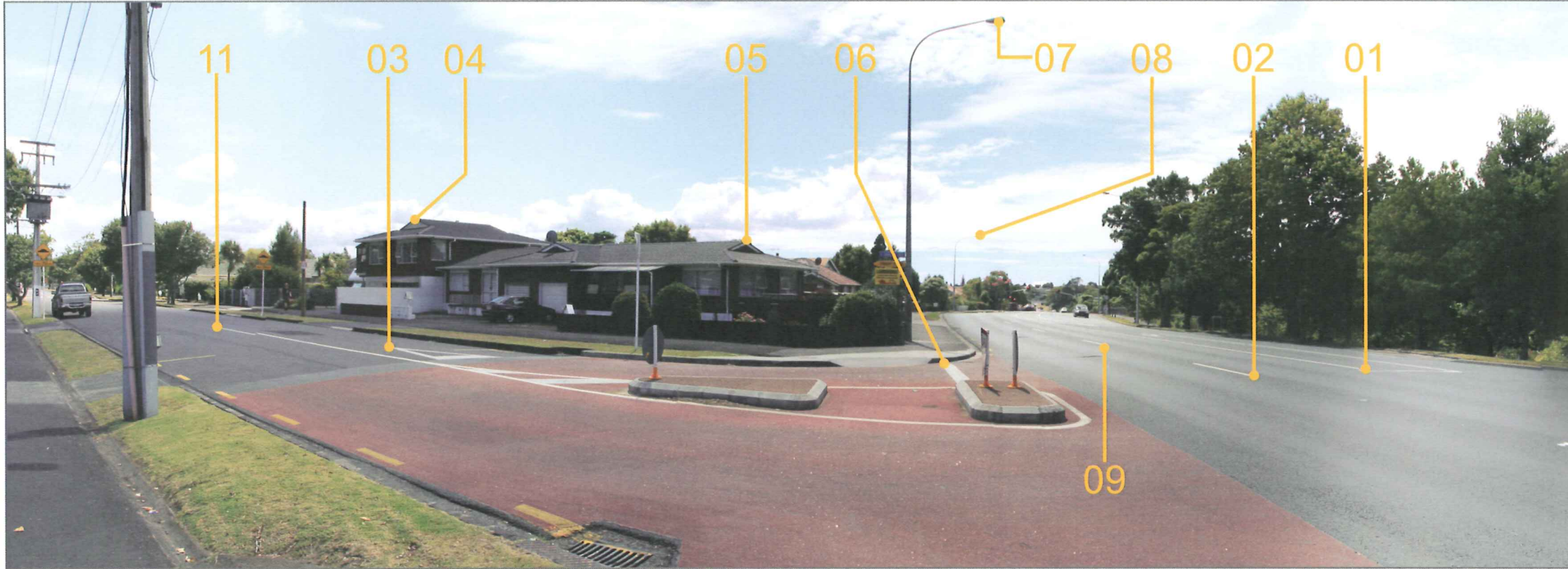
## 2 Oakley Avenue, Waterview - Off Site 15m Stack

2662146.861, 6478941.251, 22.538 - New Zealand Map Grid  
Photographed 09 March 2010 1.34pm

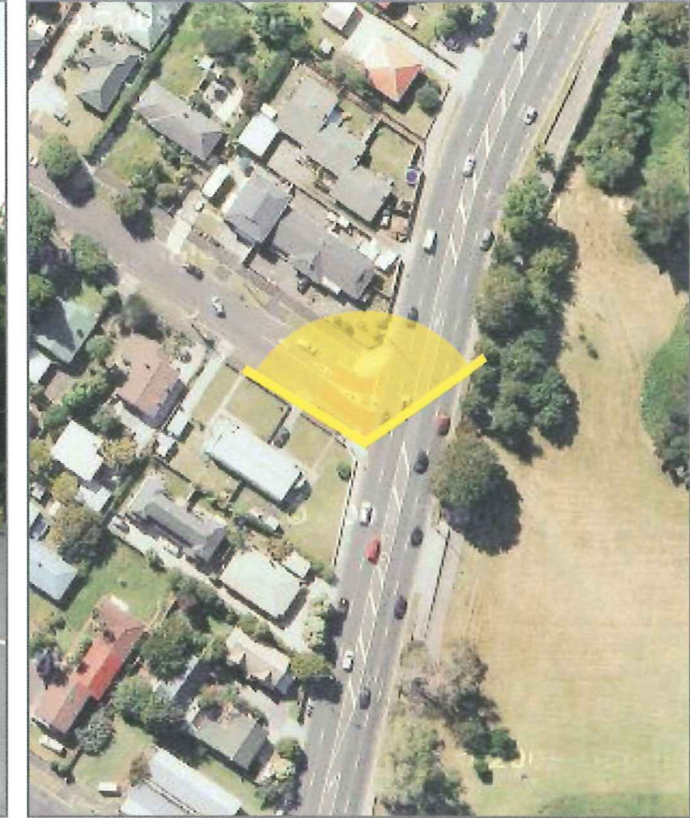
Canon EOS 50D - 17mm (x1.6 Multiplier 27mm)  
Image Projection Method - Rectilinear Perspective

Horizontal Field of View - 120 degrees  
Viewing distances - A1 550mm, A2 389mm, A3 275mm, A4 194mm





Tie Point Locations



Photograph location

**TIE POINT LOCATIONS**

1	2662160.542	6478952.025	21.424
2	2662157.405	6478952.037	21.338
3	2662137.882	6478960.168	21.080
4	2662123.886	6478990.873	27.619
5	2662148.293	6478978.055	25.468
6	2662153.100	6478957.610	21.080
7	2662157.483	6478965.054	32.782
8	2662184.600	6479040.081	31.749
9	2662159.733	6478961.660	21.252
11	2662126.926	6478965.743	21.080

**2 Oakley Avenue, Waterview - Tie Point Information**

2662146.861, 6478941.251, 22.538 - New Zealand Map Grid  
 Photographed 09 March 2010 1.34pm

Canon EOS 50D - 17mm (x1.6 Multiplier 27mm)  
 Image Projection Method - Rectilinear Perspective

Horizontal Field of View - 120 degrees

