

Baypark to Bayfair Link

Project update

21 December 2022

2022 in review

Bay Link has come a long way in the space of a year. Here's what has changed in 2022.



Bayfair roundabout and flyover in February 2022 and in December 2022.



State Highway 2 (SH2)/State Highway 29A (SH29A) Te Maunga interchange and Truman Lane in February 2022 and in December 2022.

 Year in review at Bay Link - January – December 2022  Share

Baypark to Bayfair Link

Baypark view


January to December 2022

 WAKA KOTAH
Watch on  YouTube

Te Kāwanatanga o Aotearoa
New Zealand Government

Watch the Bay Link site transform in our 2022 timelapse.

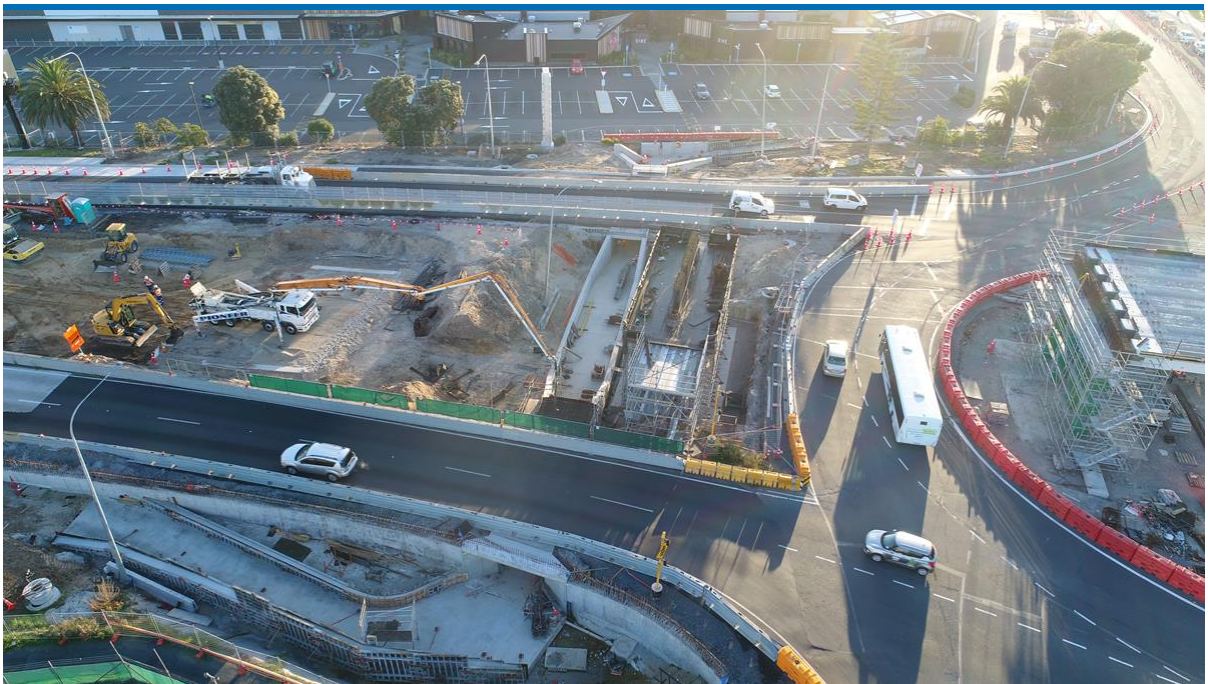
Highlights of 2022



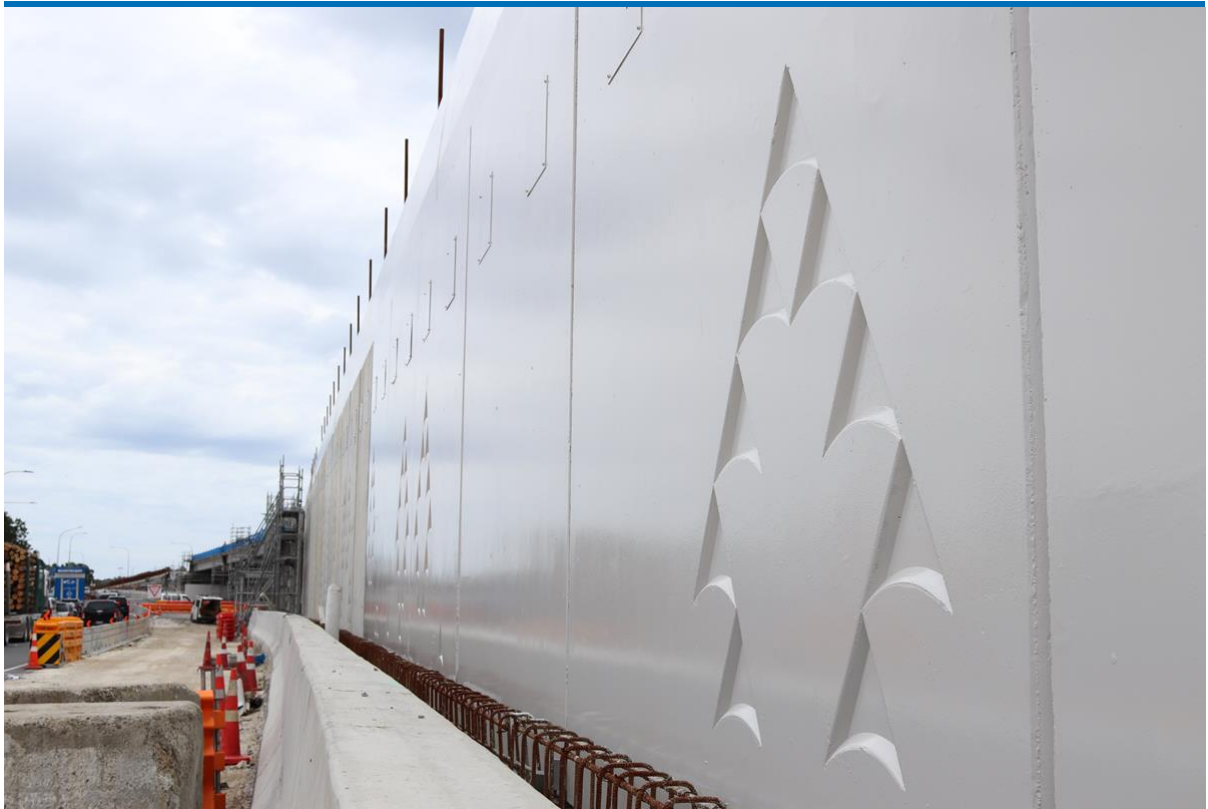
Lifting 24 beams into place forming the four-span flyover at Bayfair roundabout between April and August 2022.



Partial opening of the new SH2/29A Te Maunga interchange at the Baypark end of the project in July.



Making the SH2 underpass at Bayfair available for use in April.



The first artworks have gone up: pātiki (flounder) and pāpaka (mud crab) patterns feature on ramps of the Bayfair flyover and on Te Maunga interchange concrete barriers.

Visit the image gallery for more photos from 2022: nzta.govt.nz/baylink-gallery

Upcoming changes for road users over summer

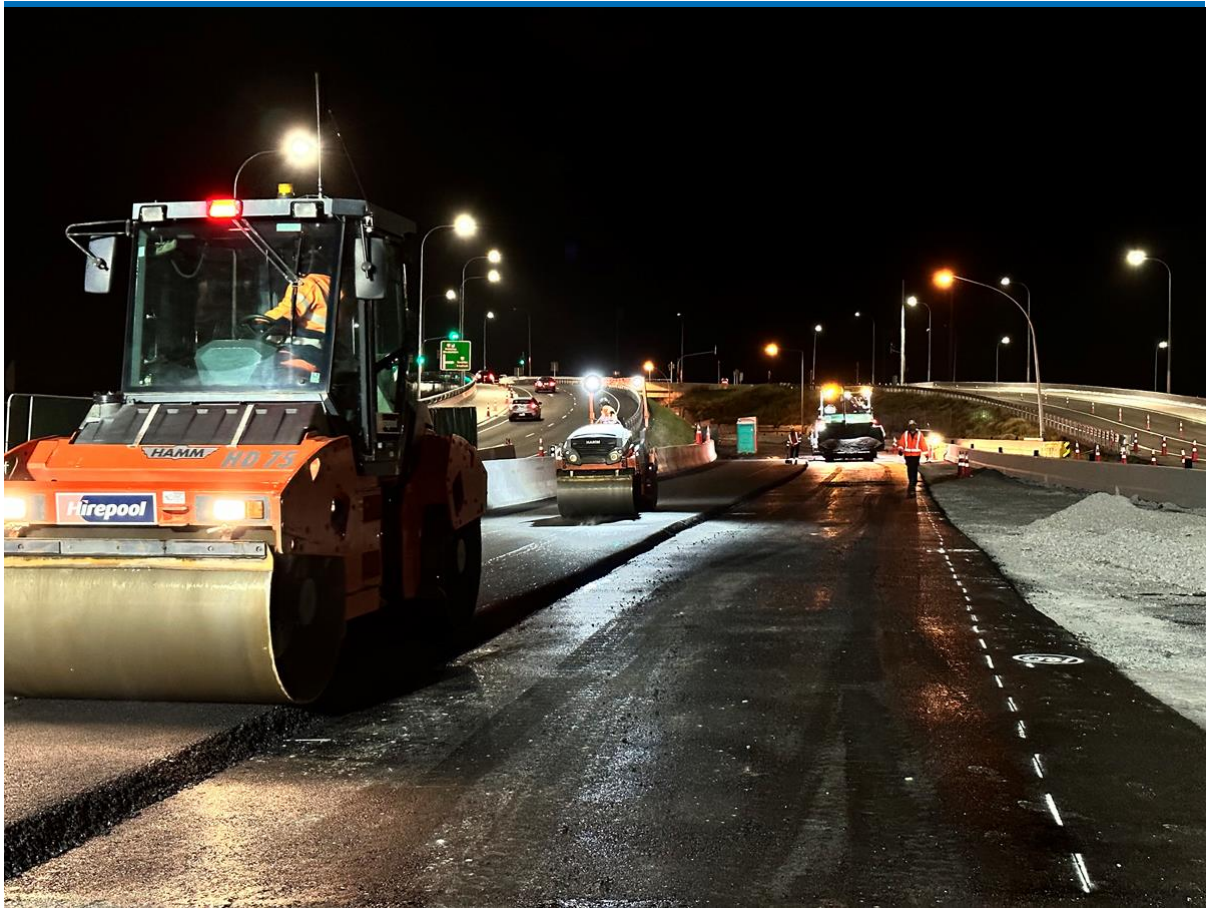
When work resumes on the project in 2023, our team will be busy planning some of the next major pieces of work, which include:



- Installing precast concrete barriers to the outer edges of the Bayfair flyover. As some barriers will be installed above the Bayfair roundabout, there will be overnight road closures in the area similar to when the bridge beams were installed in the same location earlier this year. Further information will be available in the new year.
- Installing precast fascia panels to the final retaining wall of the Bayfair flyover north of the Bayfair roundabout, closest to Golf 360 driving range.



- Road reconstruction including at the project's northern end, where crews are busy constructing the new Bayfair roundabout. The current layout provides for one lane between Matapihi Road and Girven Road; and the left lane of Matapihi Road at the roundabout is left turn only. Two lanes from Matapihi Road to Girven Road around Bayfair roundabout are currently expected to be restored in autumn. More information on the temporary layout is available [here](#).



- Implementing a minor traffic switch in the canyon – the long, narrow work area on SH2 extending from the end of Exeter Street, underneath Te Maunga interchange towards Tauranga Eastern Link (TEL). Once the road reconstruction currently underway on the eastern side of the canyon is complete, a traffic switch will move the single northbound lane over onto the new road. Road reconstruction will then begin on the canyon’s western side. A single lane only will remain available for road users travelling from Pāpāmoa/TEL to Bayfair while this work is underway.



- A short section of Truman Lane remains one lane, westbound only, until autumn while road reconstruction is underway. Access to Truman Lane is via SH2 Sandhurst interchange only. Access to Truman Lane from the SH29A roundabout is closed. Follow detours and allow extra time. To protect our crew so they can safely reconstruct the road, we've reduced the road to a single lane which means work can be completed safely alongside live traffic.
- Find out more at nzta.govt.nz/truman-lane



- Work continues on the final ramp of the SH2/29A Te Maunga interchange (the TEL off ramp) and the Bayfair flyover, both of which are currently expected to open in autumn 2023.

Walking and cycling between Bayfair and Baypark coming along

People can now walk, cycle or scooter on the new shared path along SH2 between Exeter Street and SH2/29A Te Maunga interchange. We opened the remaining part of the shared path on SH2 between Exeter Street and the interchange, completing another piece of the walking and cycling infrastructure as part of the Bay Link project.

For people walking or cycling between Bayfair and Baypark, the footpath from Te Maunga interchange towards Baypark/Truman Lane will remain in a temporary configuration until autumn while the Truman Lane stairway is under construction. Precast concrete stairs will be installed in the new year, followed by work on other elements including the concrete ramp, handrails and lights.

The permanent walking and cycling connection between Bayfair and Baypark will be available at the completion of the project.

Plan ahead to minimise delays these summer holidays

Waka Kotahi is expecting high volumes of traffic on state highways and local roads across the Bay of Plenty throughout the Christmas/New Year period.

While most road works including Bay Link stop prior to busy holiday travel periods, people should still allow extra time if travelling through the project site where temporary traffic management, including temporary speed limits, will remain in place over the Christmas/New Year period.

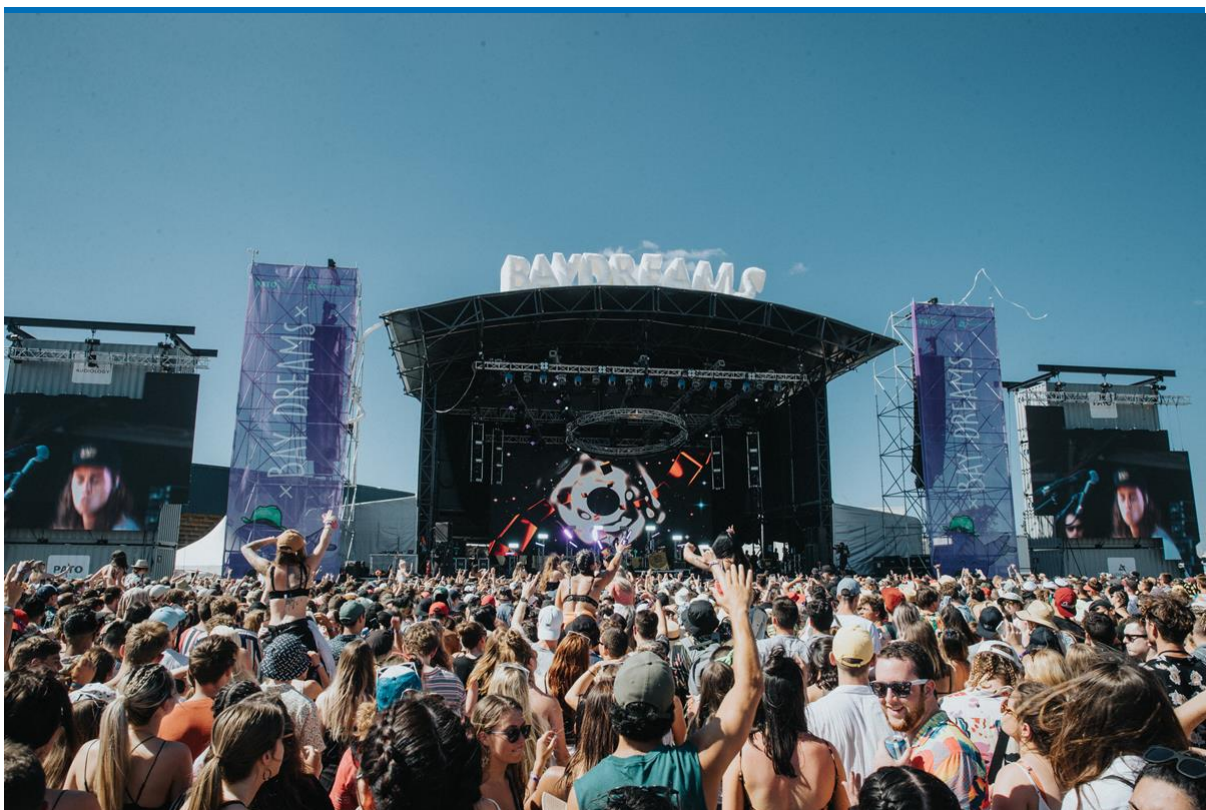
In the wider Bay of Plenty, drivers should be prepared for heavy traffic volumes over the Kaimai Range, on SH2 between Paeroa and Waihi, and also between Katikati and Tauranga.

The [Waka Kotahi Holiday Journeys traffic prediction tool](#) shows predicted traffic flow across popular journeys over the Christmas and New Year's holiday based on previous years travel patterns.

Congestion and delays are inevitable in peak times, however if everyone leaves plenty of time for their journey, drives to the conditions and plans ahead before leaving home, frustrations can be eased and everyone can concentrate on arriving safely at their destination.

Please take extra care when travelling during the holiday period. Consider travelling outside of peak times when traffic is lighter and take regular breaks.

Plan ahead with the help of the Waka Kotahi journey planner at journeys.nzta.govt.nz.



Events are back in the Bay

Major events are returning to the Bay of Plenty with Tauranga hosting a range across different parts of the city. Mount Maunganui is one of the busy destinations over the summer months and many people travel through the Bay Link site to get to and from events.

As such, people travelling through the area should be prepared for an increase in traffic, particularly when events are on. Where possible, take alternative routes to avoid potential delays. If you do need to drive in this area, please be aware of people walking and follow the traffic management signage.

Plan ahead: upcoming temporary event road closures over January

To ensure everyone can get safely to and from Bay Dreams and Juicy Fest there will be extensive traffic management in place on Tuesday 3 January 2023 and again on Friday 6 January 2023 around Trustpower Baypark and the surrounding area.

For more information about Bay Dreams visit baydreams.co.nz.

For more information about Juicy Fest visit juicyfest.co.

What you need to know – event road closures:

Bay Dreams – Tuesday 3 January to Wednesday 4 January:

- SH2 will be closed between Te Maunga interchange (SH29A) and Sandhurst Drive, in both directions (heading towards Pāpāmoa and Mount Maunganui), from 8pm Tuesday 3 January to 1am Wednesday 4 January.
- Exeter Street – entry and exit from SH2 closed from 7pm Tuesday 3 January to 1am Wednesday 4 January.
- Truman Lane will be closed between SH29A roundabout and Tip Lane, from 7am Tuesday 3 January to 7am Wednesday 4 January. Entry and exit from Truman Lane to SH29A will be closed. Access to Te Maunga transfer station will be maintained. In addition, Truman Lane will be closed between Mangatawa Link Road and Tip Lane from 5.30pm Tuesday 3 January to 1am Wednesday 4 January.

Juicy Fest – Friday 6 January to Saturday 7 January:

- SH2 will be closed between Te Maunga interchange (SH29A) and Sandhurst Drive, in both directions (heading towards Pāpāmoa and Mount Maunganui), from 8pm Friday 6 January to 1am Saturday 7 January.
- Exeter Street – entry and exit from SH2 closed from 7pm Friday 6 January to 1am Saturday 7 January.
- Truman Lane will be closed between SH29A roundabout and Tip Lane, from 7am Friday 6 January to 7am Saturday 7 January. Entry and exit from Truman Lane to SH29A will be closed. Access to Te Maunga transfer station will be maintained. In addition, Truman Lane will be closed between Mangatawa Link Road and Tip Lane from 5.30pm Friday 6 January to 7am Saturday 7 January.

These road closures aim to minimise impacts to residents and businesses while these events take place. Where possible, take alternative routes to avoid potential delays.

For up-to-date information on road works, traffic, detours and delays, please use the Waka Kotahi Journey Planner at journeys.nzta.govt.nz.



Bay Link shutdown

The Bay Link project team would like to thank you for your ongoing patience throughout the year. We would like to wish you a safe and happy holiday season, and remind you to take care on the roads, whether you're travelling near or far.

The Bay Link construction site will be closed from 12pm Friday 23 December 2022 until 9am Monday 9 January 2023. Temporary speed restrictions remain in place throughout the site during this time.

The Bay Link contact number 0508 222 4636 remains operational over the Christmas/ New Year period.

More information

For more information on the Baypark to Bayfair Link upgrade project, contact us at baylink@nzta.govt.nz

Visit our website www.nzta.govt.nz/baylink

 [About](#)  [Careers](#)  [Privacy](#)



You received this message because you signed up to receive project updates on the Baypark to Bayfair Link upgrade project on our website or provided your details as part of our public engagement



**Te Kāwanatanga
o Aotearoa**
New Zealand Government

activities. If you no longer wish to receive these updates, please feel free to unsubscribe.

[**Unsubscribe**](#) | [**Subscribe to updates**](#)

© 2022 Waka Kotahi NZ Transport Agency, all rights reserved