

Project update

Autumn – a season of change at Bay Link

Autumn is not only the season where we see nature change its colours, the Bay Link project has also undergone some significant transformation reaping the rewards of hard work during the summer months. The flyover is visibly taking shape with beams forming two of the four spans in place. The underpass is now available in a temporary configuration to be used by people walking and cycling. And soon, the change in colour will also be seen at the Te Maunga end with four of the five ramps and the bridges being asphalted, in preparation for the partial opening of the interchange mid-2022.





Bayfair roundabout before and after the beam lift

Flyover taking shape one beam at a time

Two nights of well-orchestrated work made a big difference at the Bayfair roundabout with twelve 54-tonne beams placed across two spans of the four-span flyover.

Earlier this month, 12 concrete beams were lifted into place forming two spans of the four-span flyover which will take traffic over the Bayfair roundabout. They are connecting the southern approach ramp with two of the three piers. Manufactured in Te Puke, each beam is 28 metres long and weighs up to 54 tonnes. And with the help of a 300-tonne crane, positioned near the Bayfair roundabout, they were lifted into place over two nights.

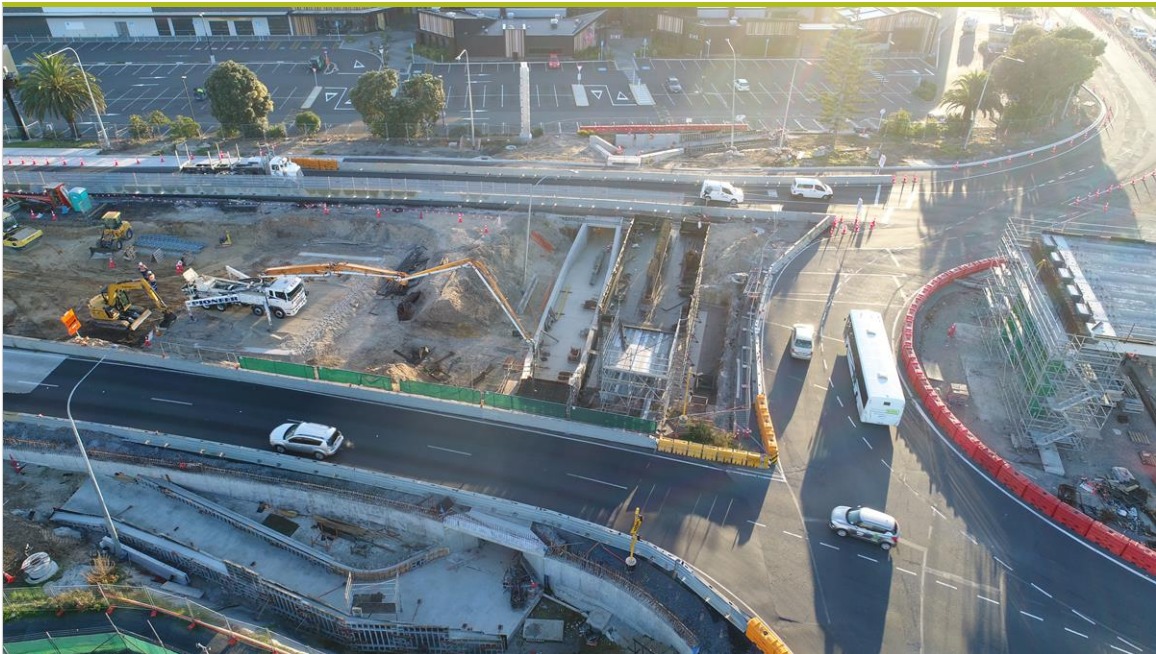
Now that the beams are in place, steel for this section of the bridge deck can be tied before the deck is poured next month. Work is underway on the remaining pier and the northern ramp of the flyover is beginning to take shape. The next set of beams for the flyover are expected to be lifted into place in May 2022, with the flyover expected to open in autumn 2023.

Once the Bayfair flyover is complete, it will improve safety and accessibility and transform how people move through the area. Similar to the Hewletts Road flyover, there will be a lane in each direction, separating heavy vehicles heading to the Port from local traffic. In addition to the flyover lanes, there will be two ground level, grade-separated lanes either side of the flyover for local traffic.



Video: Beam lift timelapse

Check out this timelapse of the beams being lifted up into their new home - the Bayfair flyover.



Aerial view of the underpass seen from the Matapihi side

A first glimpse of the pedestrian underpass

People walking, cycling, using scooters and mobility scooters can now use the Bayfair underpass to safely cross SH2/Maunganui Road. The use of the underpass in its current configuration in combination with the removal of the former signalised pedestrian crossing on SH2/Maunganui Road provides a larger work zone for the construction of the northern ramp of the Bayfair flyover to begin. The underpass can be accessed from both sides via new concrete ramps.

This switch brought changes for people driving on SH2, removing the need for vehicles to stop at traffic lights outside Bayfair Shopping Centre. Traffic is expected to flow better

along SH2, and drivers are reminded that a 30km/h speed restriction is in place around the Bayfair roundabout and a 50km/h speed restriction is in effect between the Te Maunga intersection and Concord Avenue for the duration of the Bay Link project.

Construction of the underpass will be ongoing and people can expect to see work occurring in and around the area, and should take care.

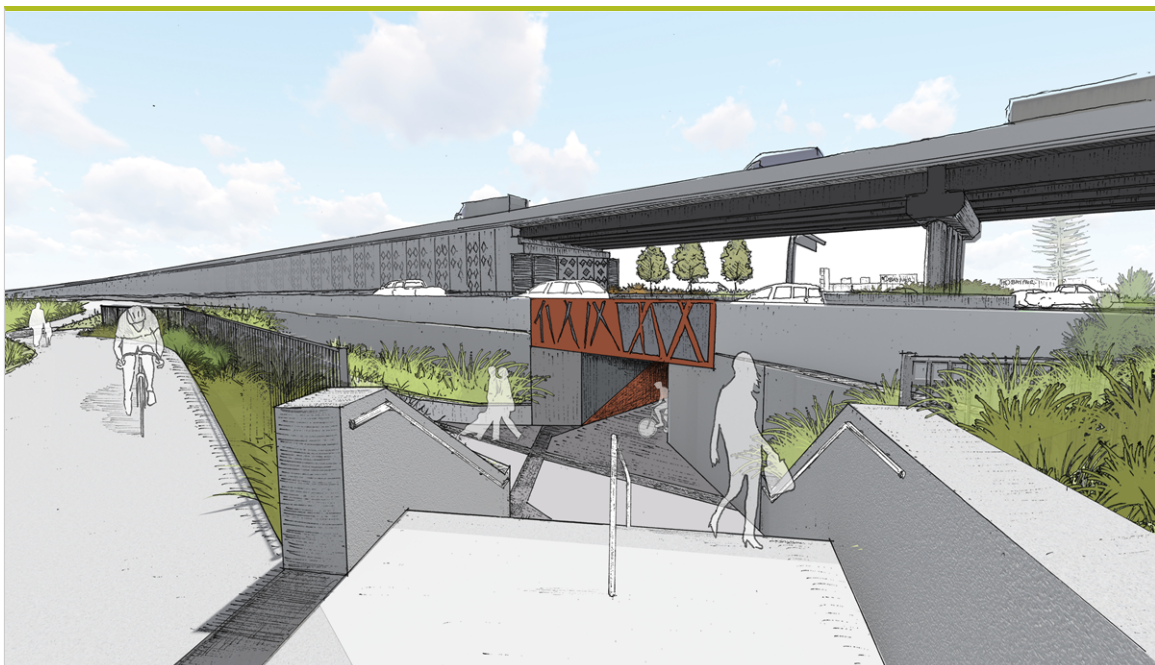
Pedestrians and cyclists are encouraged to make use of the underpass to cross under SH2 as the existing signalised crossing is no longer available. Pedestrians are strongly urged not to cross SH2 at road level around the Bayfair roundabout for their own safety as well as that of other road users and road workers.

For more information, visit nzta.govt.nz/baylinkunderpass.



Underpass construction timelapse

Watch the timelapse of construction from April 2021 to February 2022. The Bayfair approach is taking shape on the bottom left of the Bayfair sign and the open air trench on the top right of the sign.



Artist's impression of the Matapihi approach to the pedestrian and cyclist underpass.

At the completion of the Bay Link project, people walking, on bikes, scooters and mobility scooters will be able to cross SH2/Maunganui Road between Bayfair and Matapihi via a new underpass. By separating pedestrians and cyclists from the road above, the underpass will provide a safer connection for all users.

Prior to the end of the Bay Link project, the underpass will close for final completion work. At that time, people walking and cycling will be able to cross via the new Bayfair roundabout pedestrian crossing.



Illustration of the partial opening of the Te Maunga interchange

Te Maunga interchange dressed in black

The Te Maunga interchange is nearing a major milestone and will dress in black for the occasion. Structural asphalt will be applied, as one of the last major pieces of work, before the Te Maunga interchange can partially open to traffic mid this year.

With the asphaltting complete, street lights and traffic signals, temporary line marking, guard rails and signs will also be installed.

Traffic will be separated from the rail corridor as a result of the Te Maunga interchange taking SH29A traffic over the railway line.

Did you know?

As part of the whole Bay Link project, we are rebuilding more than 79,000m² of road – that's 10 standard rugby fields.

More information

For more information on the Baypark to Bayfair Link upgrade project, contact us baylink@nzta.govt.nz

Visit our website www.nzta.govt.nz/baylink