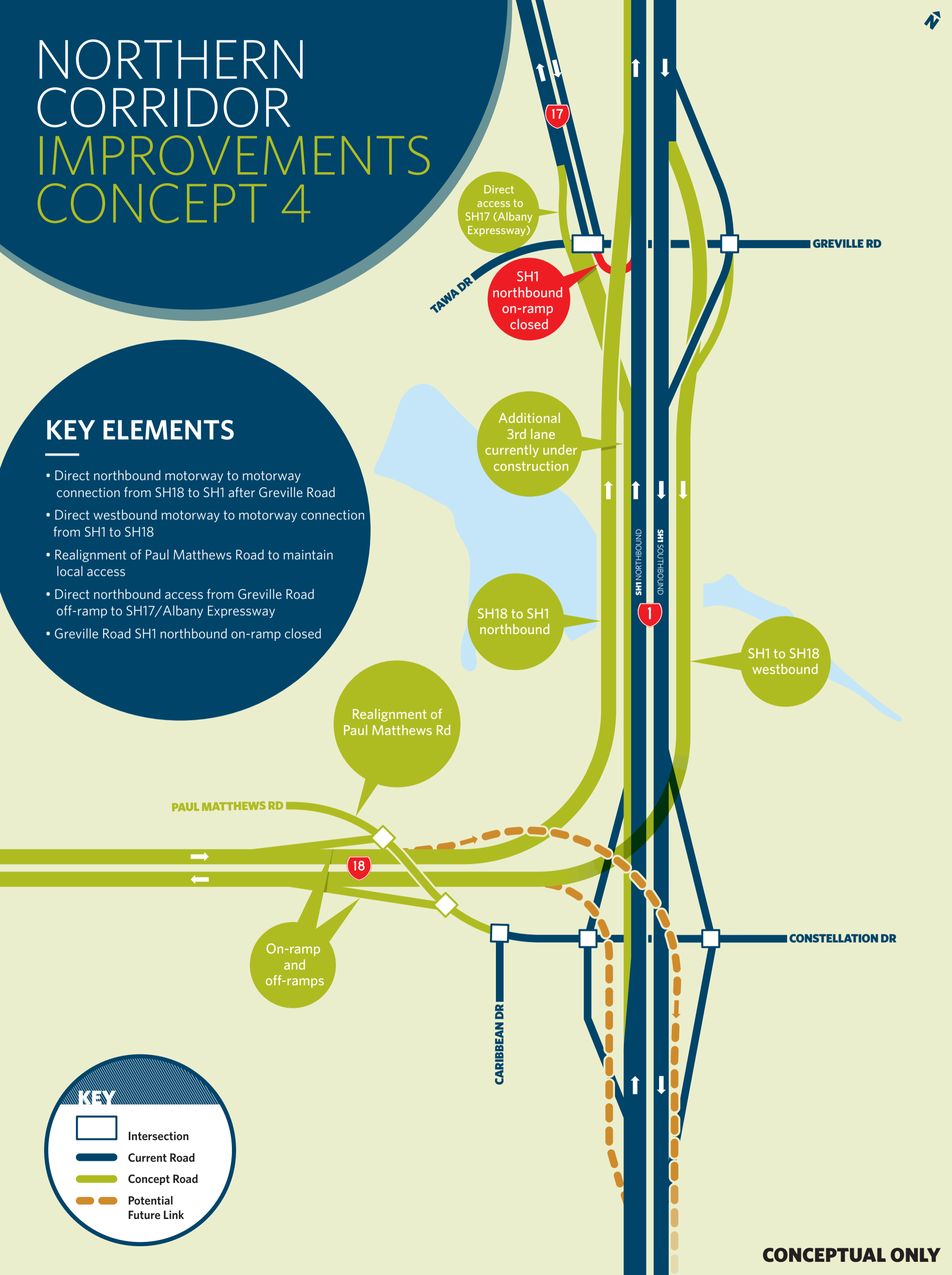
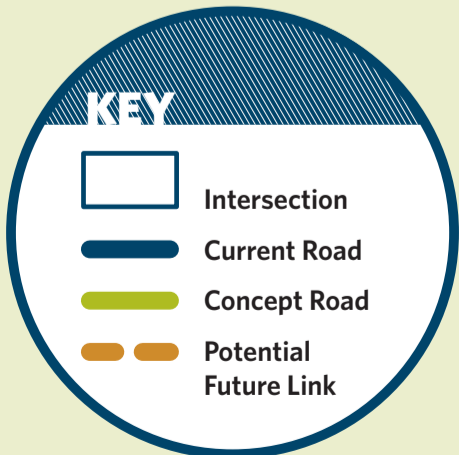


NORTHERN CORRIDOR IMPROVEMENTS CONCEPT 4

KEY ELEMENTS

- Direct northbound motorway to motorway connection from SH18 to SH1 after Greville Road
- Direct westbound motorway to motorway connection from SH1 to SH18
- Realignment of Paul Matthews Road to maintain local access
- Direct northbound access from Greville Road off-ramp to SH17/Albany Expressway
- Greville Road SH1 northbound on-ramp closed



CONCEPTUAL ONLY