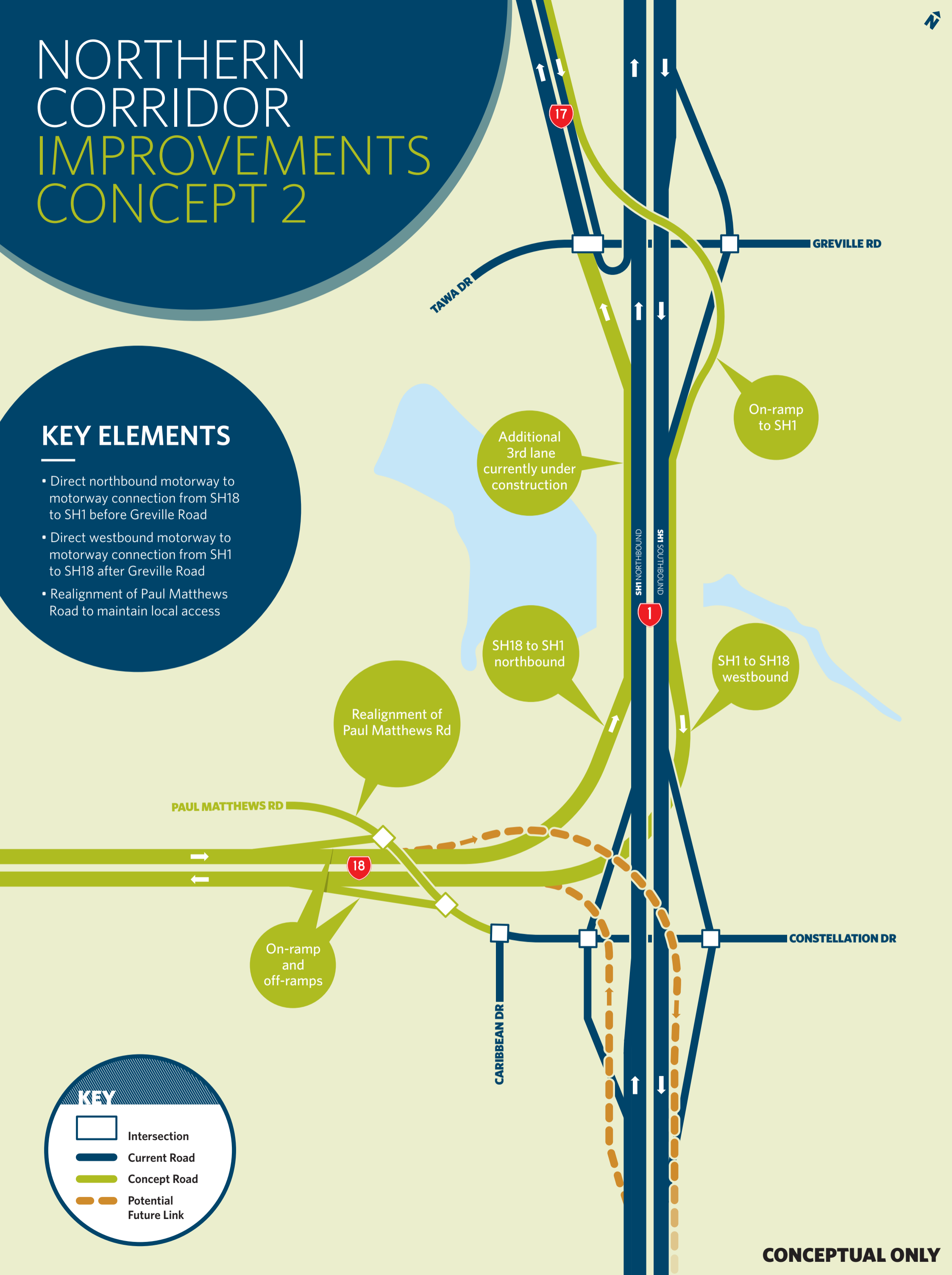


# NORTHERN CORRIDOR IMPROVEMENTS CONCEPT 2

## KEY ELEMENTS

- Direct northbound motorway to motorway connection from SH18 to SH1 before Greville Road
- Direct westbound motorway to motorway connection from SH1 to SH18 after Greville Road
- Realignment of Paul Matthews Road to maintain local access



**KEY**

- Intersection
- Current Road
- Concept Road
- Potential Future Link

**CONCEPTUAL ONLY**