



OCTOBER 2016 | ISSUE 6 | NEWSLETTER

IN THE PAST 6 MONTHS ...

The Delivery team has:

- Upgraded lighting around North and South compounds
- Upgraded edge protection on the bridge (handrails)
- Completed painting of Spans 6 and 7
- Completed maintenance on clip-on lanes to improve skid resistance
- Completed design of storm-water tanks retrofit
- Refurbished expansion joint one
- Replaced 113 Streetlight bulbs
- Carried out 3 'Rescue from Height' exercises

UPCOMING WORKS

- Page 2



In putting this newsletter together it occurred to me that the bridge is more than just a bridge, it is a community facility, an Auckland icon and a vital piece of infrastructure both locally and nationally. The AHB provides many functions other than providing for vehicles to cross the Waitemata. Major services are carried on the bridge, including the north shore water mains, gas supply, telecommunications, and motorway traffic systems; the AHB provides tourists and Aucklanders alike opportunity to experience the workings of the structure through the commercial AJ Hackett bridge walk operations, or experience the thrill of a bungy jump. For Auckland and New Zealand it provides an identity to the harbour that is recognisable anywhere in the world and stands shoulder to shoulder with other significant bridges such as the Golden Gate and Sydney Harbour Bridge. These and other aspects of the bridge combine to connect communities whether it be in a physical or virtual sense and provides an economic and geographical lifeline to the city. We have three great examples (some of which are covered in greater detail in the newsletter) that demonstrate this community function of the AHB, these being;

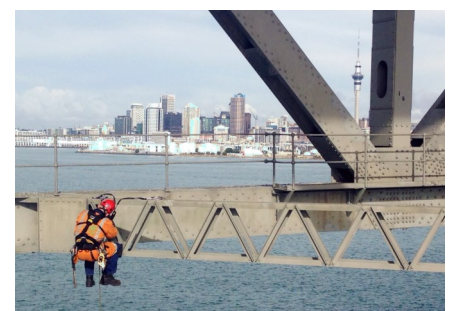
- The AHBA won a merit award from the Association of Consulting Engineers NZ for our innovative resource consent process. This process allows red tape to be removed thereby providing cost savings, but has a significant level of accountability to ensure maintenance operations are having less or no more impact on the environment.
- We are flying the New Zealand White Ensign in the coming weeks to commemorate the 75th Anniversary of the Royal New Zealand Navy.
- The Te Onewa Point project that is designed to recognise a site of cultural significance and provide access, enhancement and protection of values for this area is due to commence in the coming weeks.

So hopefully next time you look at the bridge, you won't just see a road connecting two shorelines you will see a facility that helps create part of the fabric that makes up the unique identity that is Auckland and New Zealand.

BETTER STRUCTURAL INSPECTIONS

Over recent years, we have been steadily improving the effectiveness of our structural inspections. This involves getting closer to hard to reach areas, and critical components, of the bridge. To allow this to happen we have been investing in abseil training and equipment, access plant, and new technology.

These improvements will provide us with a better understanding of the condition of the bridge, allow us to target repairs to problem areas sooner. Ultimately this will help us reduce long term costs and ensure that bridge can be kept in good working order indefinitely.



If you have any questions or concerns regarding the Auckland Harbour Bridge, contact us on 24hr Freephone **0800 652 004** Email info@ahb.nzta.govt.nz or just pop into the office.



AUCKLAND HARBOUR BRIDGE UPDATE

One of the first projects Jiwei has undertaken, is the annual inspection of the east and west concrete viaducts between Pier N19 and P26. The inspection items include original viaduct underside of road deck, piers and footings, east and west extensions underside of road deck, piers and footings. These inspections are carried out

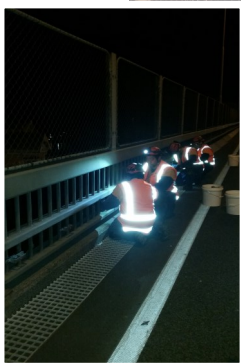
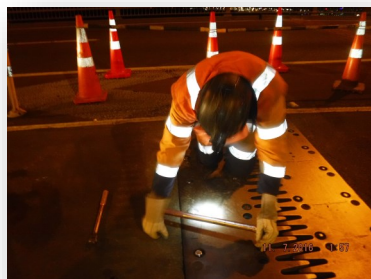
during the low tide period from a track mounted telescopic boom (as pictured) so timing is of an essence, you may have seen this in progress if you have a boat moored near the bridge or out walking in the Sulphur Beach area.

View with the tide in



EXPANSION JOINT INSPECTION

Crew working night shifts to install the litter guards. This innovative idea came about to help prevent pollution in the neighbouring properties and our magnificent harbour.



UPCOMING WORKS

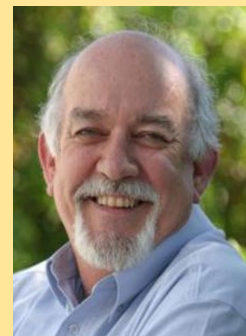
- ◆ Inspection of horizontal pier bracket interfaces 1,5,6 repair work scheduled for mid Oct to mid Nov
- ◆ Gantry refurbishment incl. handrail upgrade - Current
- ◆ Access Improvements , Span 1 - Current
- ◆ External box coating repairs - Nov start
- ◆ Eastern pier bracket access improvements - Nov start
- ◆ ADSI inspection - Nov through to Dec
- ◆ Road Surface - Maintenance 27th—30th Oct (weather contingency 3rd—6th Nov)

We have a few new faces at the project office

Jiwei Wang joined us in January to take up the role of Bridge Asset Management Engineer. Prior to this, he was working for Opus Wanganui as a Civil Engineer. His work experience includes bridge inspections and civil design projects in Otago, Southland and Manawatu—Whanganui.



Richard Quin joined us in November for 3 days per week as the Health & Safety Manager. Richard has been with Fulton Hogan for many years and now divides his time between them and us at the Bridge. He is very approachable so if you have any concerns he can be contacted on the O800 number.



Prior to joining the AHB Alliance,

Philip Polwin has been gaining experience in both asset management and bridge design. Phil is joining us as a Bridge Asset Management Engineer.



Hannah Barker, our Site Engineer, has gone on maternity leave, her baby boy was born 15th June, we wish her and her family well and look forward to her return in the New Year.



Farewell to Nick Coxhill, NZTA Maintenance Contract Manager. After doing a fantastic job for us in the 19 months he has been with NZTA he is returning to England. Safe travels and maybe we will see you back in the future.

Congratulations to our Abseiling Team who were praised by Vertical Horizontz as being one of the more skilled and knowledgeable in the industry.



A SLICE OF HISTORY

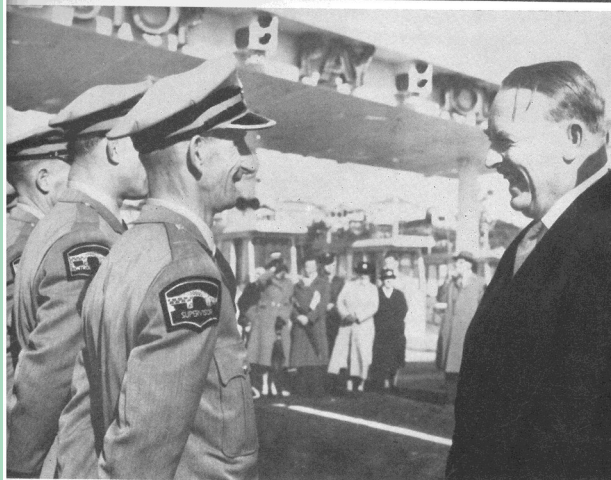
To follow on from our last newsletter we thought we would bring you another article from the old newspapers we found.

This is from the issue dated 3 June 1959, opening day celebrations.



Showing there are always the same issues to contend with...

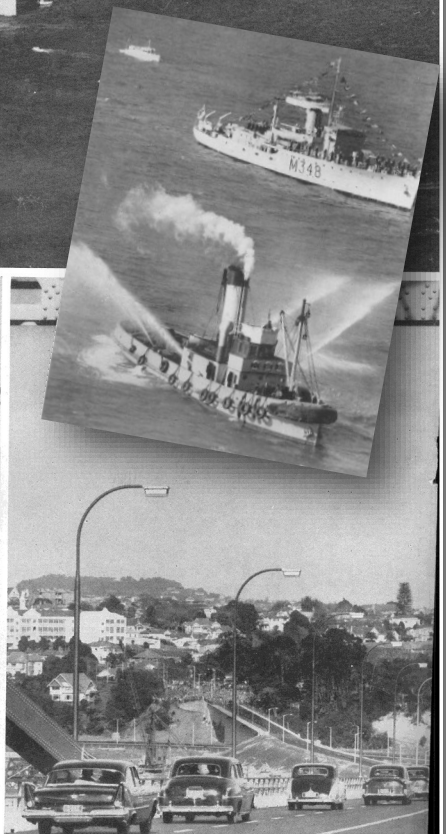
MAGGI a brand that has certainly stood the test of time and grown over the years



His Excellency meeting uniformed members of the Bridge Authority's staff.

The bridge is open: harbour link completed

On a day of autumn sunshine, fresh breeze and showers, Auckland celebrated one of its historic days—the fulfilment of its hopes that the harbour shores would be spanned by a bridge. The Governor-General, Lord Cobham, opened the bridge by unveiling a plaque after speeches had been made by himself, the chairman of the Auckland Harbour Bridge Authority, Sir John Allum, and the Prime Minister, Mr Nash.



The first official crossing of the bridge. The Governor-General's car is in the span and is descending on the city side.

"Stairway to heaven "

Like everything that gets old, it generally needs a spruce up, repair, or even a full makeover, which was the case with the central stairway at the north end of the bridge.



After 58 years of good service and a change in regulations this meant new handrails plus new treads and landings were needed. It took our fitters and welders team 208 hrs to make and install the new parts, then the coatings team finished off the make over with a fresh coat of a lovely shade of grey...

just the one, not 50

PROGRESS UPDATE:

TE ONEWA POINT—SURVEY

We have recently completed a 3D point cloud survey of the Te Onewa Point from an 'unmanned aerial vehicle'. This will allow us to monitor the gradual erosion of the cliffs in the area and to determine if any slope stability work is required to ensure the long term security of the bridge foundations.



NZ Fire Service

ROPE RESCUE SCENARIO

Last month we hosted the NZ Fire Service Rescue team for a day of simulated rescue training conducted at the North Anchorage. Although our own very professional abseilers were not involved in the exercises several had the opportunity to view the procedures in passing and they were impressed by the level of skill and quality of equipment the Rescue people had on display.

Our bridge teams recognise we work in a high risk environment and we are often complimented on our skill and professionalism, and our safety record speaks for itself. We also recognise that while working at height on ropes, stages or gantries we do so under more or less ideal conditions and we will stop work

if wind or weather limits are exceeded. I.E. Safety First.

The NZ Fire Service Rescue team however are called on to work in all conditions, usually with the goal of saving life and limb so they deserve the respect of all in the community for their skill and dedication to duty. We are grateful to know that should someone become ill or incapacitated out on the bridge, rescue is at hand regardless of time or conditions. They are very welcome to practice their skills on our bridge.