

# TRAFFIC AND TRANSPORT

There will be a number of transportation benefits as a result of this project including:

- Improved travel time between Warkworth, Wellsford and Te Hana
- Reduced heavy traffic on SH1 through Wellsford and Te Hana, with the removal of nearly 1000 heavy vehicles per day
- Reduced congestion through the Wellsford main street
- A high quality, safe, new route with improved geometry and gradients
- Efficient connections to the Warkworth and Wellsford town centres through well located and convenient interchanges
- Improved corridor resilience through the provision of a reliable additional route separate from the existing SH1



Removing heavy vehicles from local centres increases transport efficiency whilst creating better urban environments

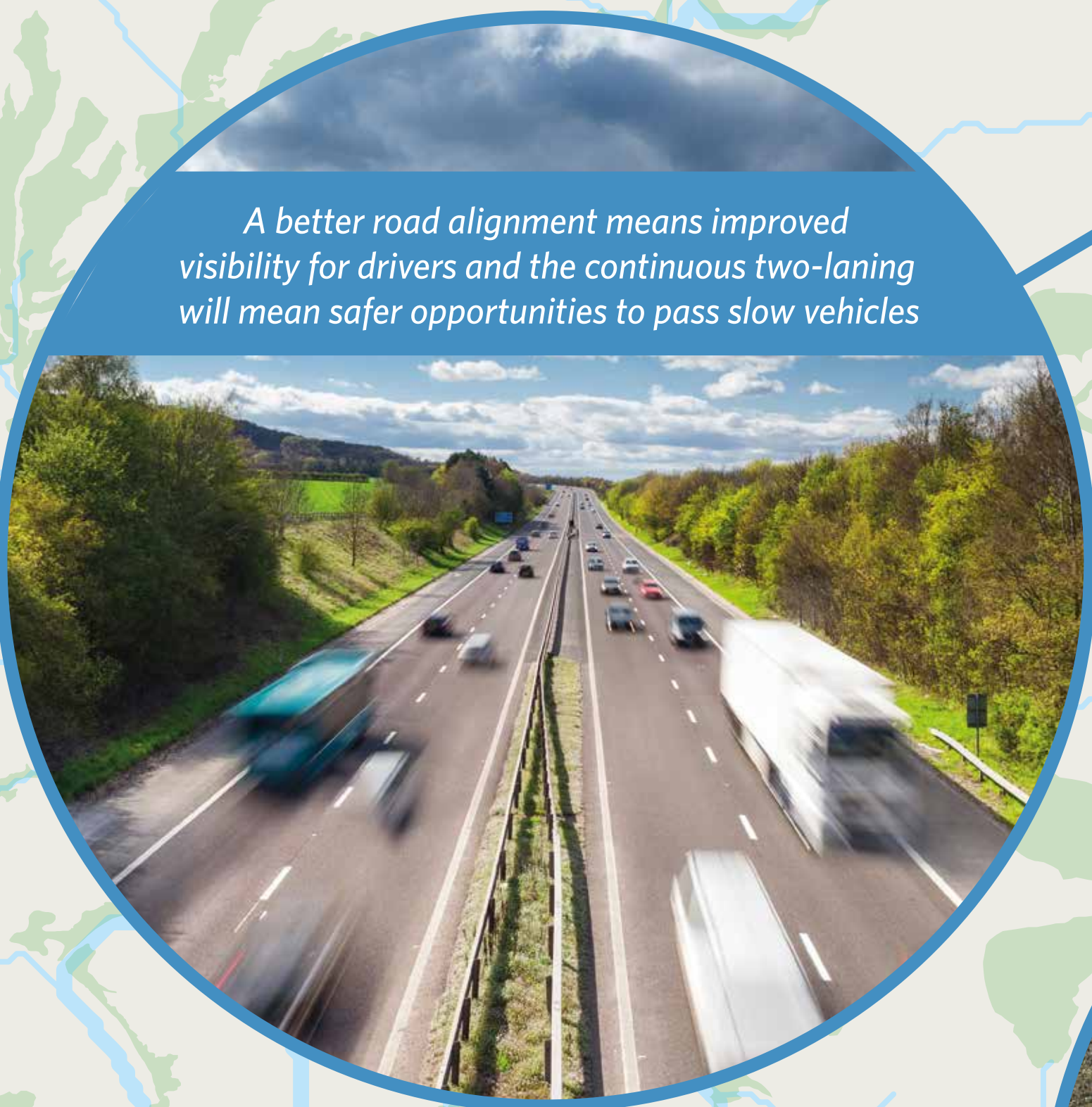


Connectivity on the local road network will be maintained to support the rural communities and support planned future growth and development to the east of Wellsford. The new road will travel over or under these local roads to ensure communities remain connected

Ground conditions in the Dome Valley means the existing State highway is susceptible to flooding and slips. The new road is designed to withstand weather events resulting in a more reliable transport connection



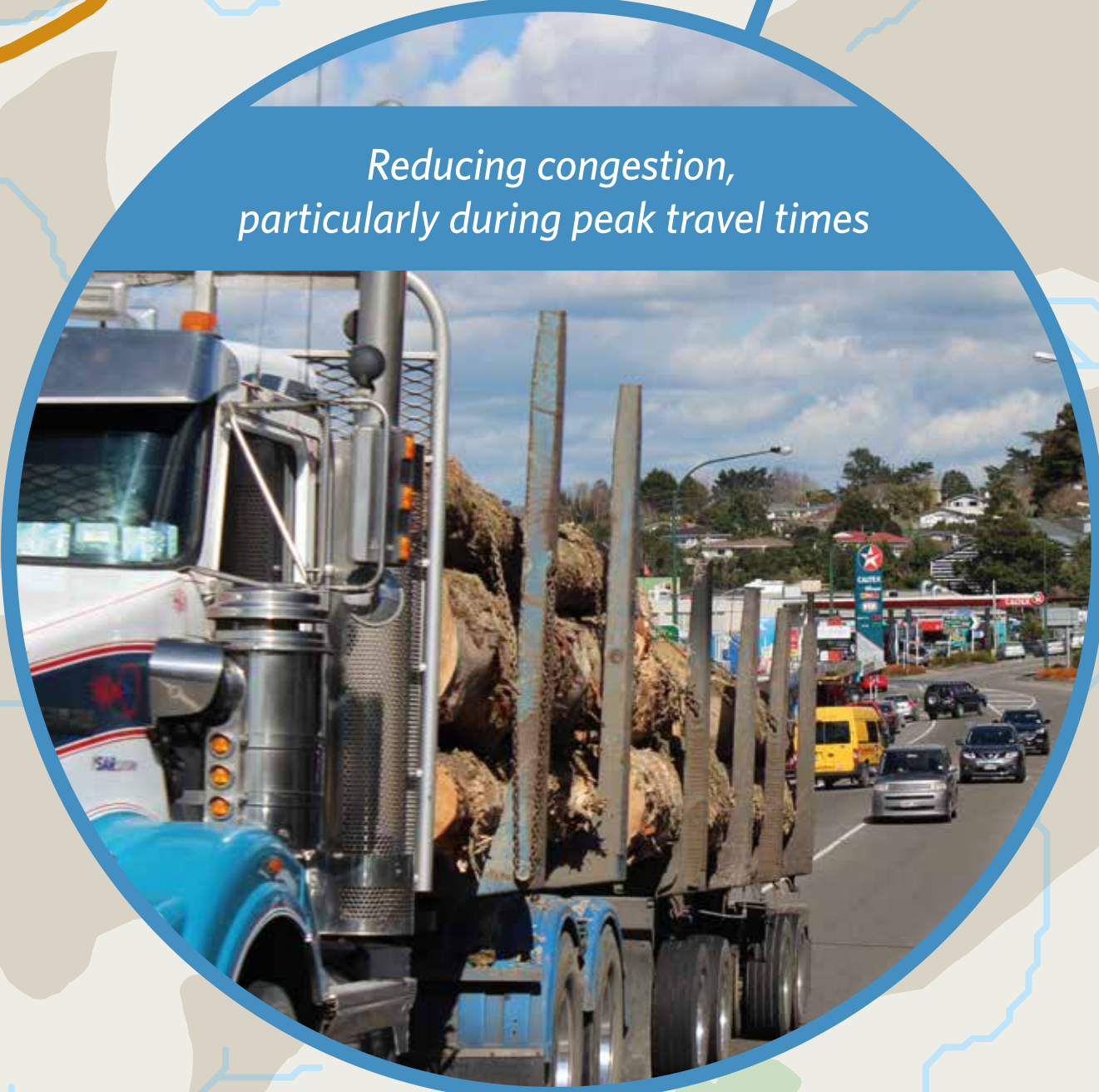
Once the new road is built, Warkworth, Wellsford and Northland will be safer for local road users and regional travellers. It will be more efficient and reliable for moving freight between Northland, Auckland and beyond



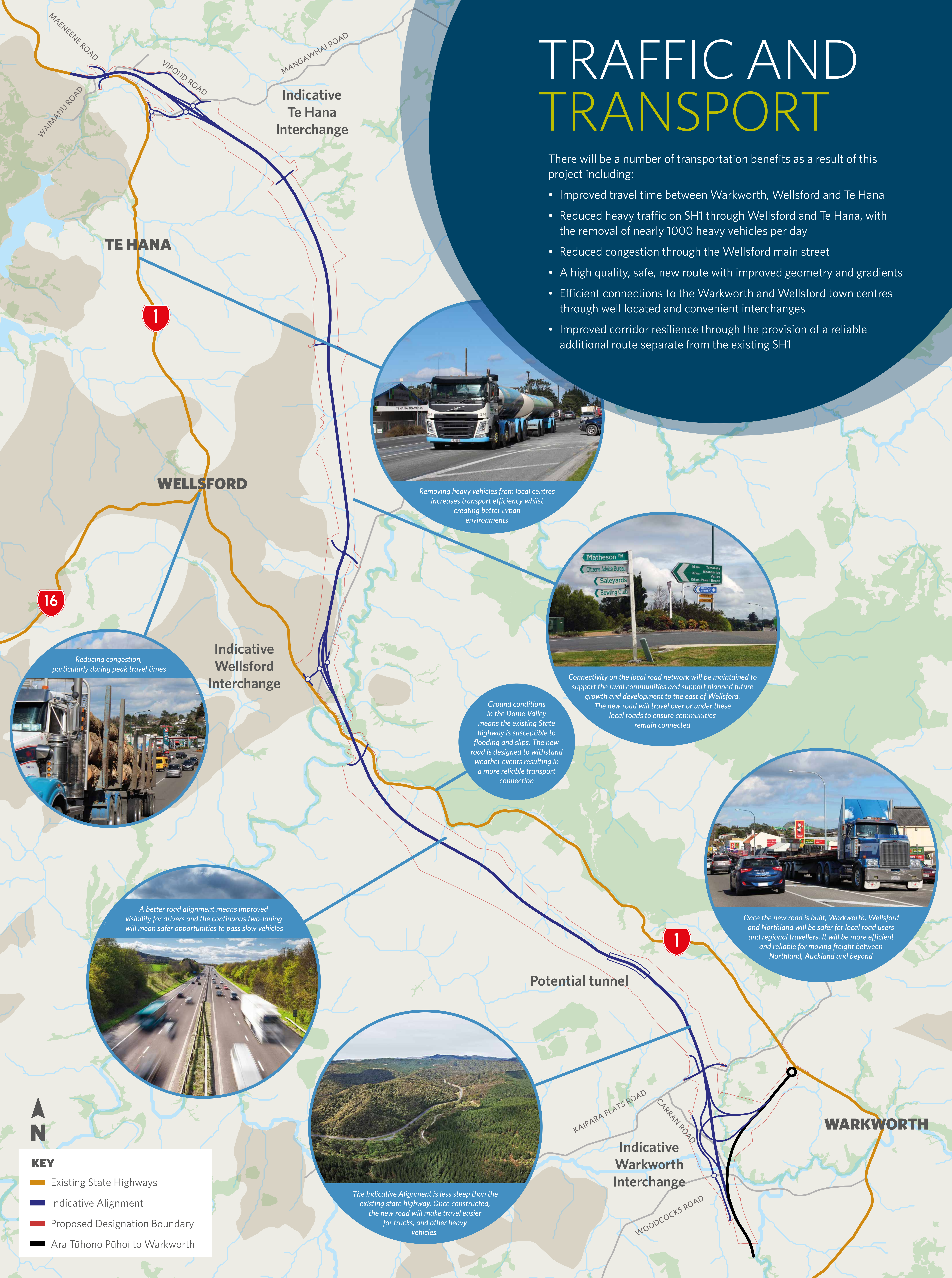
A better road alignment means improved visibility for drivers and the continuous two-laning will mean safer opportunities to pass slow vehicles



The Indicative Alignment is less steep than the existing state highway. Once constructed, the new road will make travel easier for trucks, and other heavy vehicles.



Reducing congestion, particularly during peak travel times



## KEY

- Existing State Highways
- Indicative Alignment
- Proposed Designation Boundary
- Ara Tūhono Pūhoi to Warkworth