

# APPENDIX A: LANDSCAPE AND VISUAL FIGURES

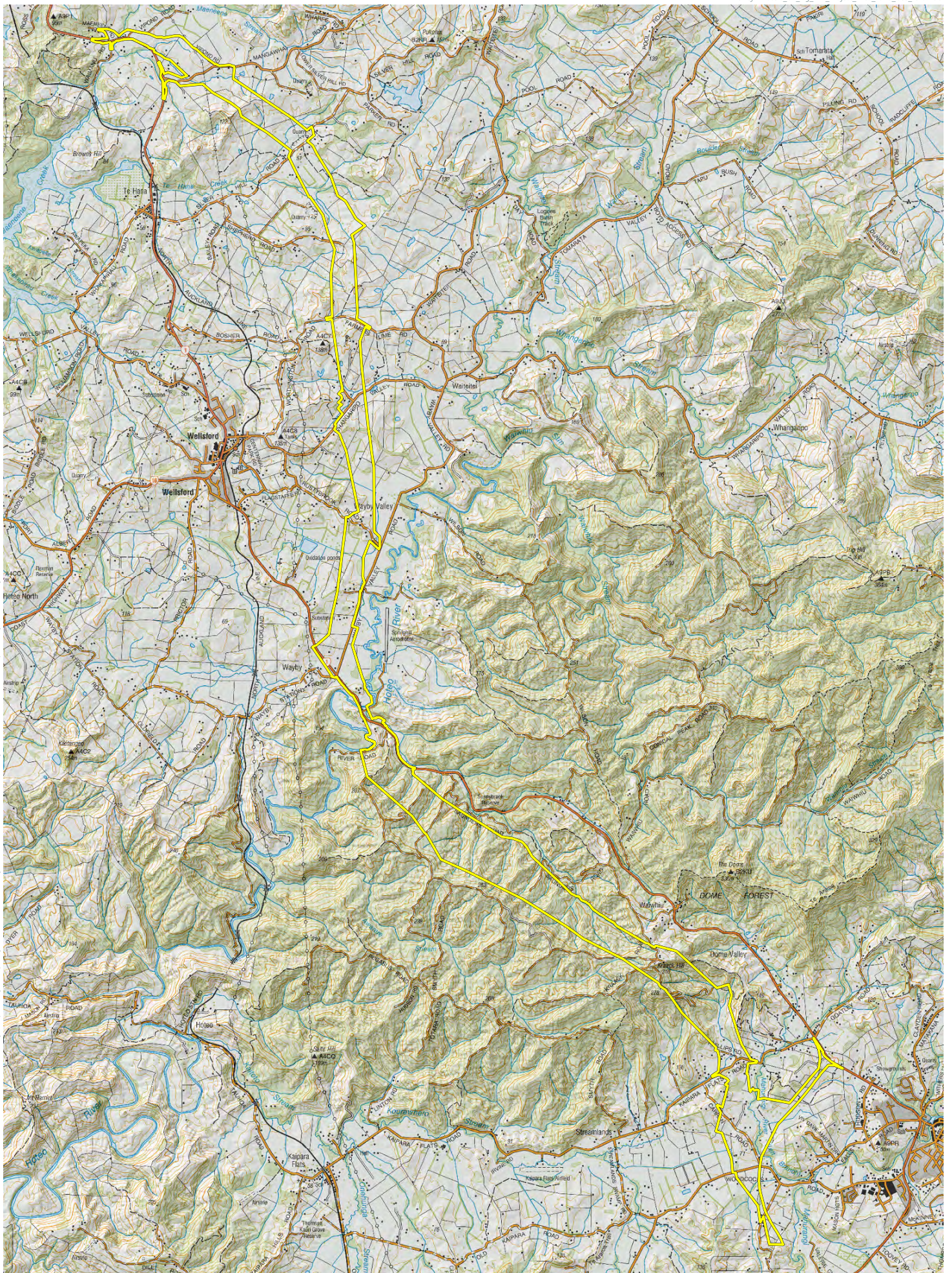
Figure LV1 to LV18, LV22, LV24, LV28 and LV31 are not to scale (generated at A3 and reported below at A4 size).

The Landscape and Visual Simulations are shown in the LV-Series of the AEE Drawing Set (Volume 3).

The Landscape and Ecological Mitigation maps are provided in the EM series of the AEE Drawing Set (Volume 3).

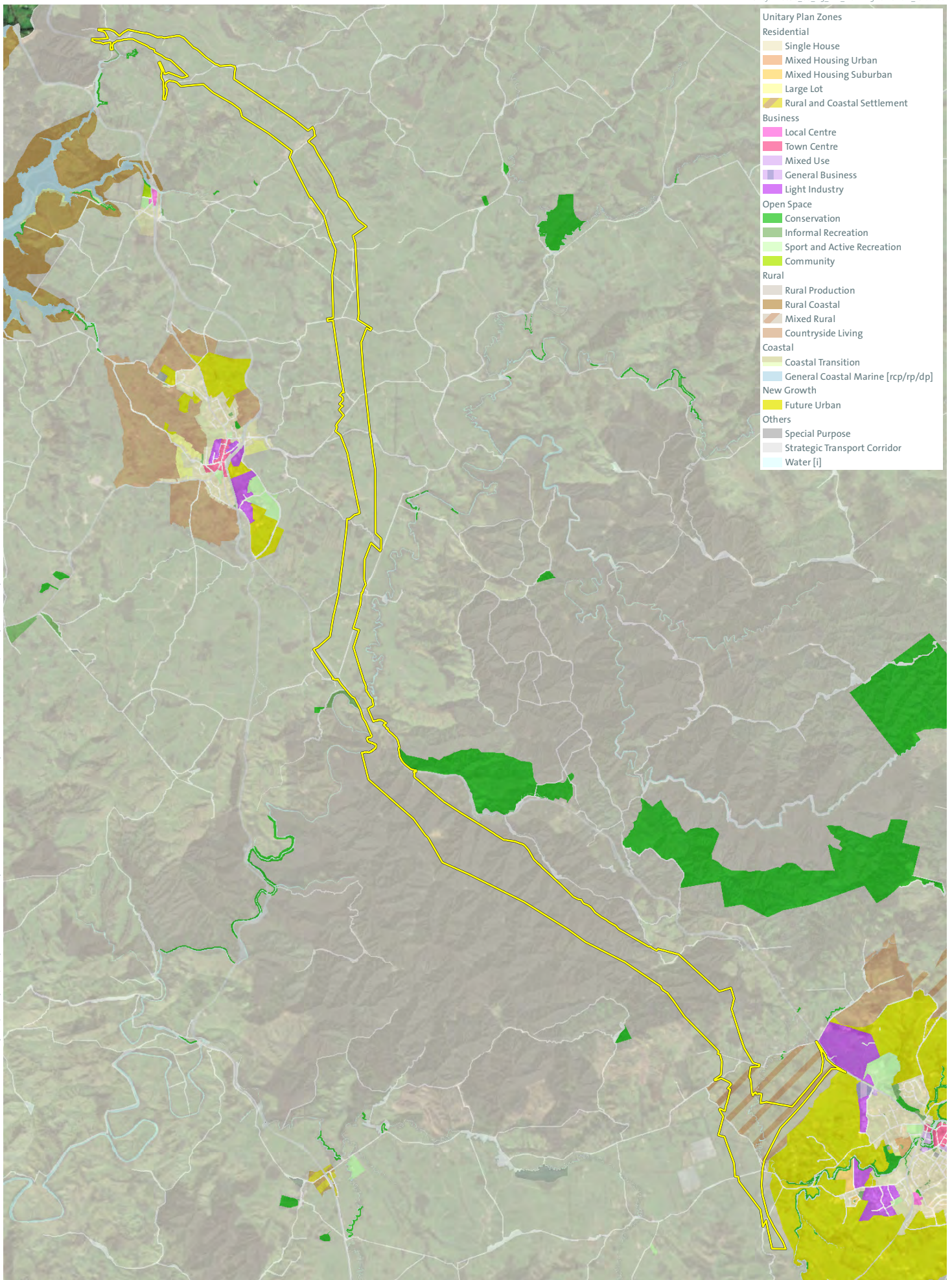


This graphic has been prepared by Boffa Miskell Limited on the specific instructions of our Client. It is solely for our Client's use in accordance with the agreed scope of work. Any use or reliance by a third party is at that party's own risk. Where information has been supplied by the Client or obtained from other external sources, it has been assumed that it is accurate. No liability or responsibility is accepted by Boffa Miskell Limited for any errors or omissions to the extent that they arise from inaccurate information provided by the Client or any external source.





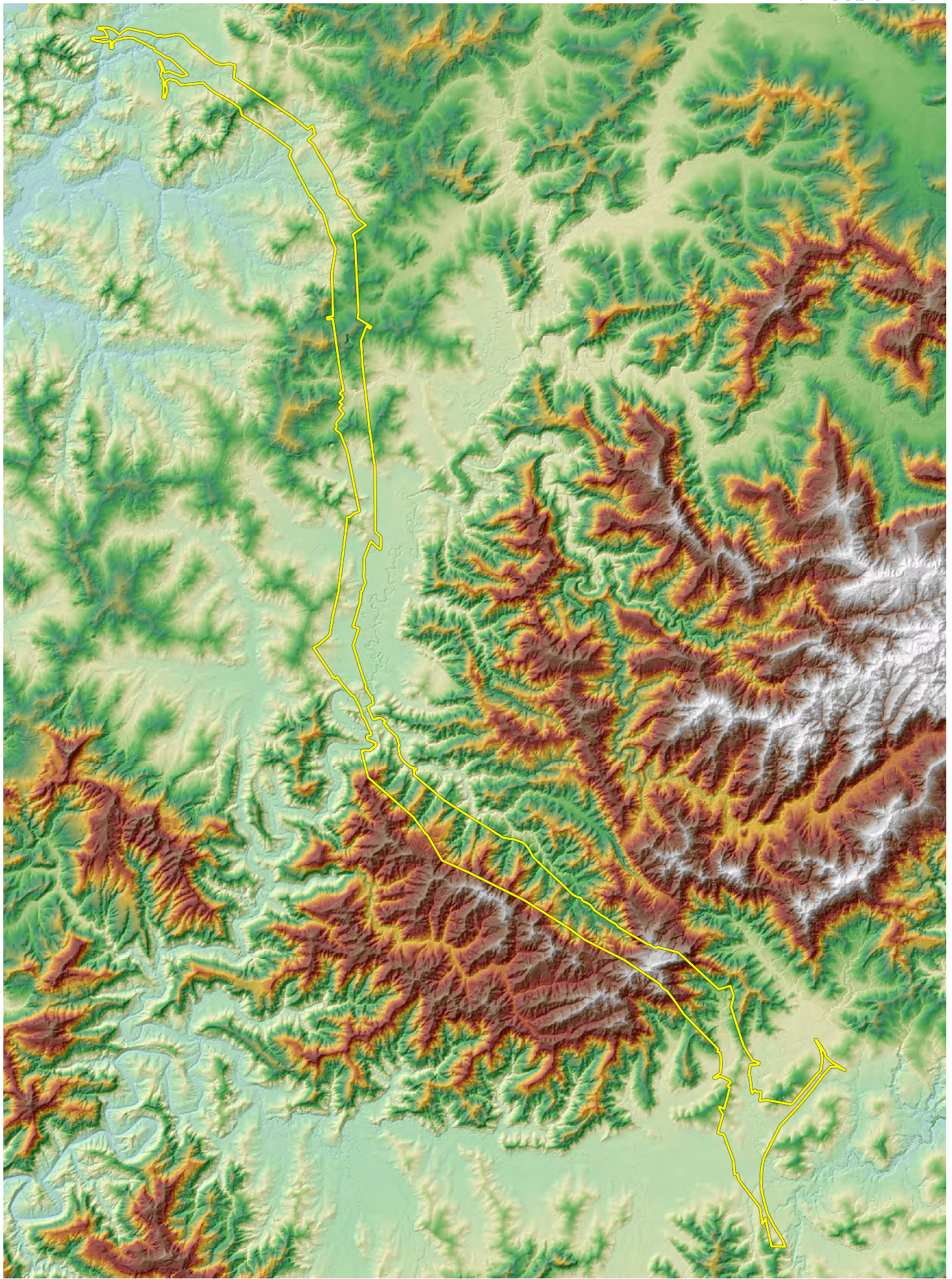
This graphic has been prepared by Boffa Miskell Limited on the specific instructions of our Client. It is solely for our Clients use in accordance with the agreed scope of work. Any use or reliance by a third party is at that party's own risk. Where information has been supplied by the Client or obtained from other external sources, it has been assumed that it is accurate. No liability or responsibility is accepted by Boffa Miskell Limited for any errors or omissions to the extent that they arise from inaccurate information provided by the Client or any external source.



- Unitary Plan Zones**
- Residential**
  - Single House
  - Mixed Housing Urban
  - Mixed Housing Suburban
  - Large Lot
  - Rural and Coastal Settlement
- Business**
  - Local Centre
  - Town Centre
  - Mixed Use
  - General Business
  - Light Industry
- Open Space**
  - Conservation
  - Informal Recreation
  - Sport and Active Recreation
  - Community
- Rural**
  - Rural Production
  - Rural Coastal
  - Mixed Rural
  - Countryside Living
- Coastal**
  - Coastal Transition
  - General Coastal Marine [rcp/rp/dp]
- New Growth**
  - Future Urban
- Others**
  - Special Purpose
  - Strategic Transport Corridor
  - Water [j]

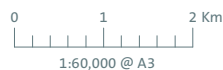
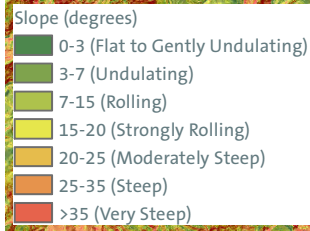
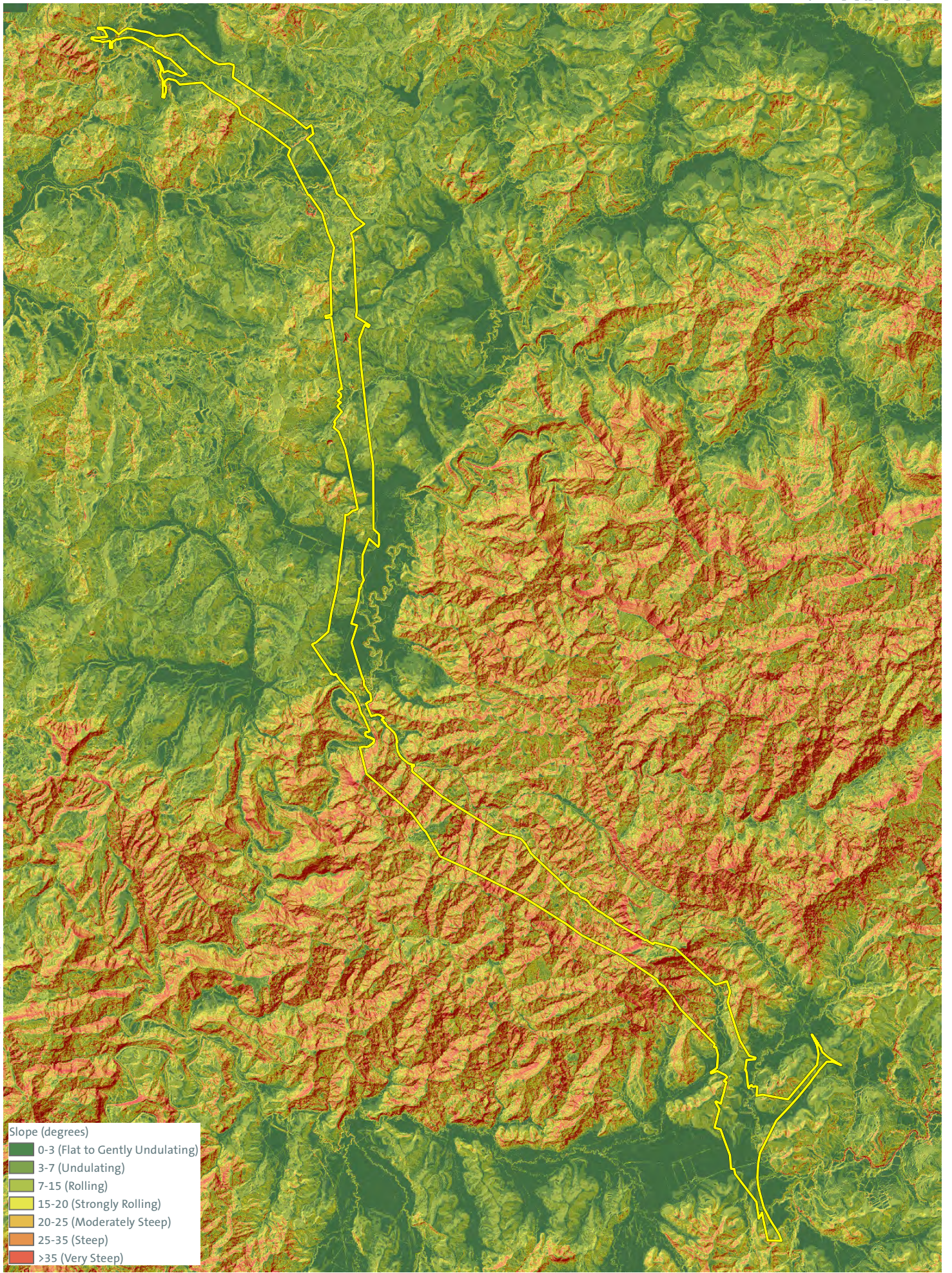


This graphic has been prepared by Boffa Miskell Limited on the specific instructions of our Client. It is solely for our Client's use in accordance with the agreed scope of work. Any use or reliance by a third party is at that party's own risk. Where information has been supplied by the Client or obtained from other external sources, it has been assumed that it is accurate. No liability or responsibility is accepted by Boffa Miskell Limited for any errors or omissions to the extent that they arise from inaccurate information provided by the Client or any external source.

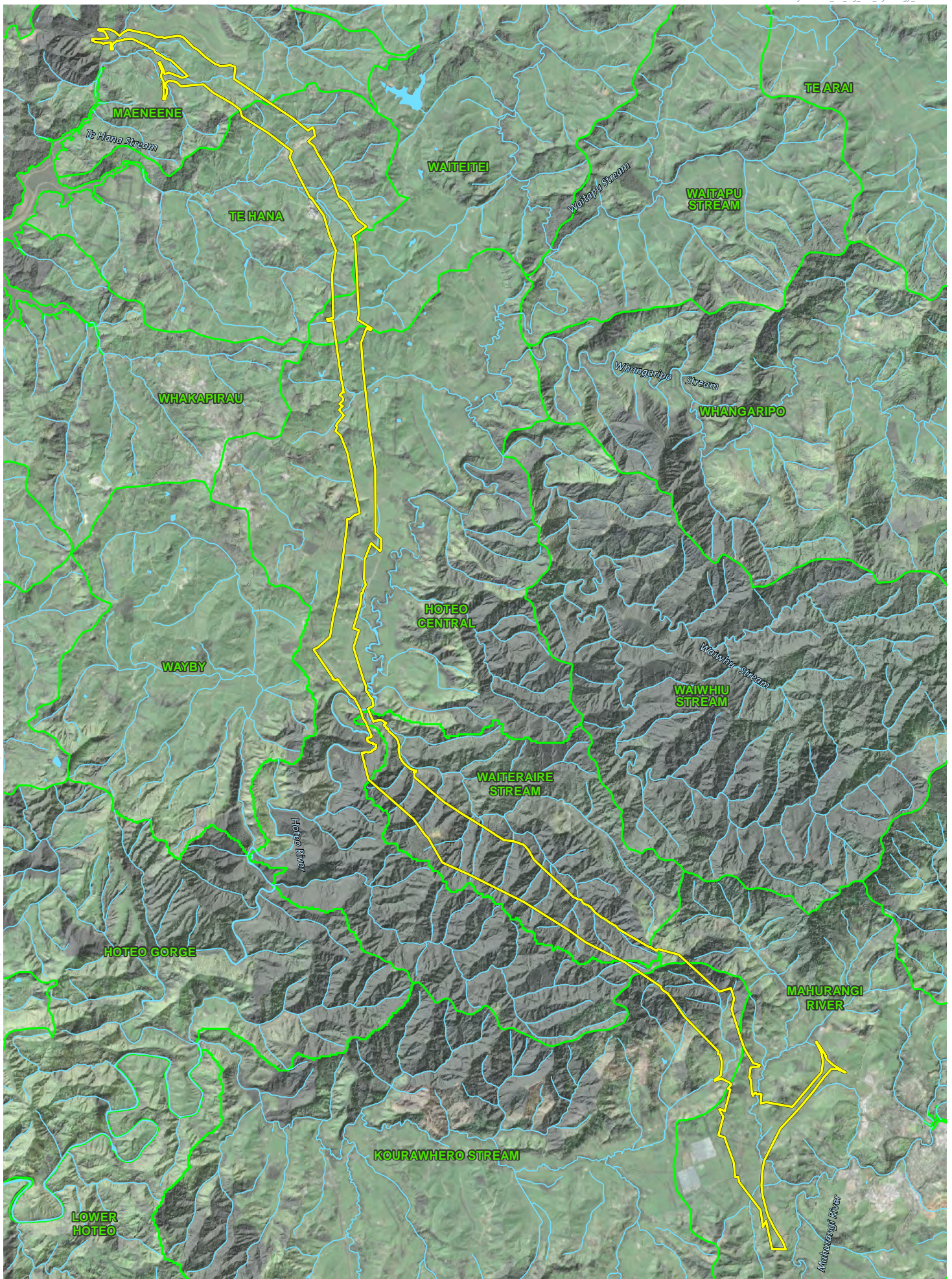




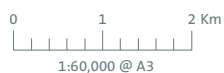
This graphic has been prepared by Boffa Miskell Limited on the specific instructions of our Client. It is solely for our Client's use in accordance with the agreed scope of work. Any use or reliance by a third party is at that party's own risk. Where information has been supplied by the Client or obtained from other external sources, it has been assumed that it is accurate. No liability or responsibility is accepted by Boffa Miskell Limited for any errors or omissions to the extent that they arise from inaccurate information provided by the Client or any external source.







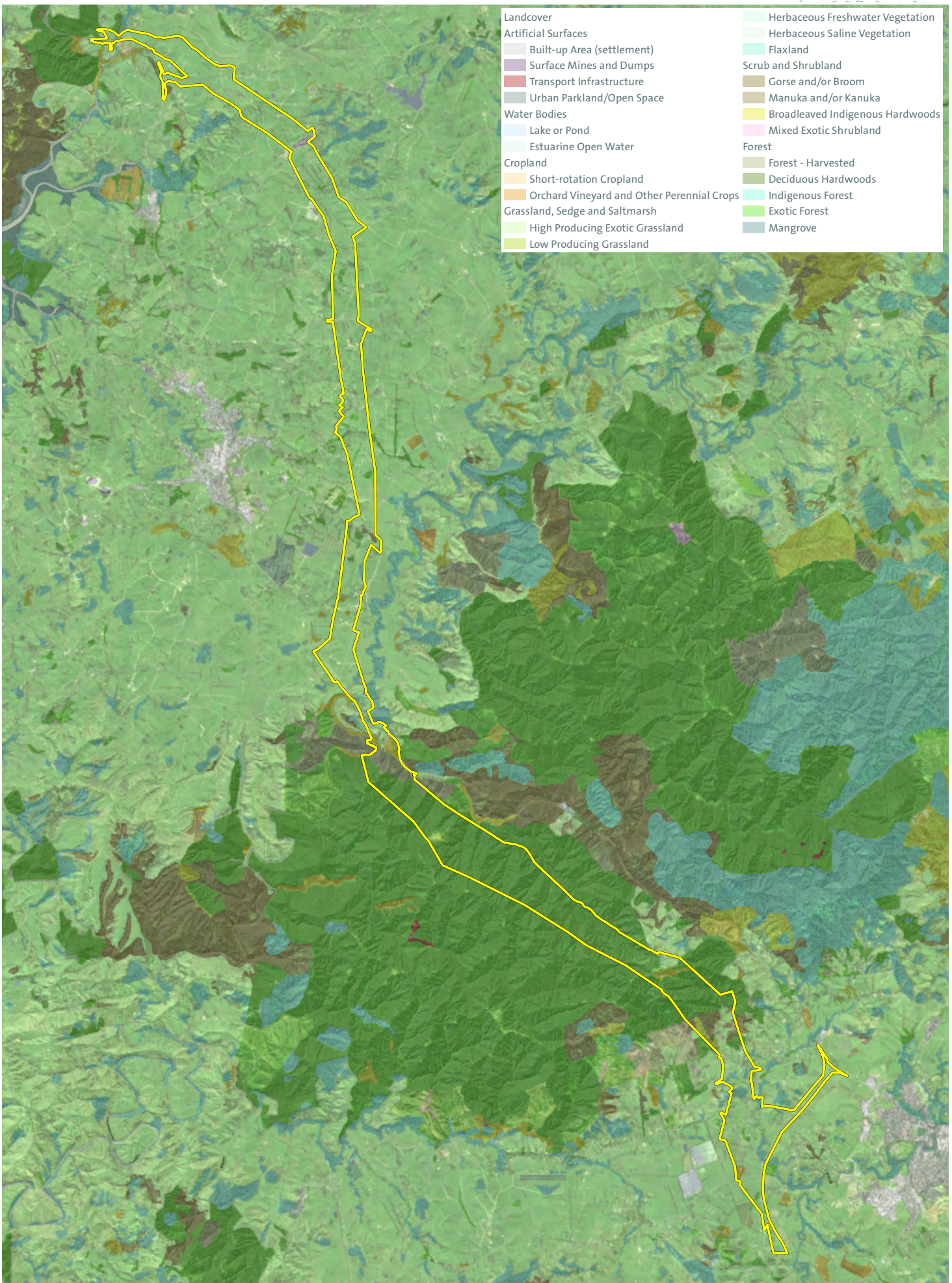
This graphic has been prepared by Boffa Miskell Limited on the specific instructions of our Client. It is solely for our Client's use in accordance with the agreed scope of work. Any use or reliance by a third party is at that party's own risk. Where information has been supplied by the Client or obtained from other external sources, it has been assumed that it is accurate. No liability or responsibility is accepted by Boffa Miskell Limited for any errors or omissions to the extent that they arise from inaccurate information provided by the Client or any external source.



- Legend**
- Proposed Designation
  - Streams
  - Rivers / Lakes
  - Catchment Boundary



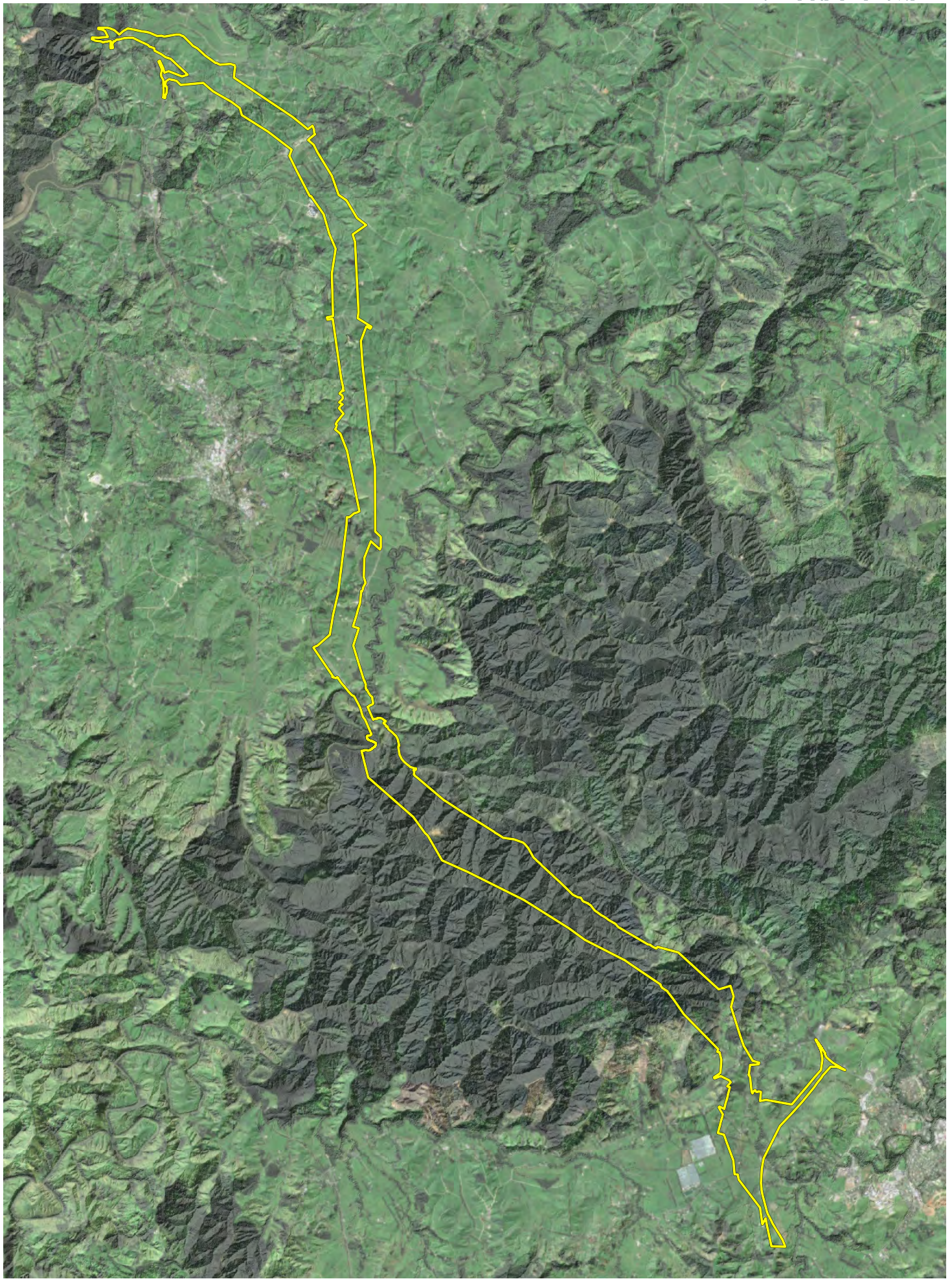
- |  |                                  |
|--|----------------------------------|
| <b>Landcover</b>                           | Herbaceous Freshwater Vegetation |
| <b>Artificial Surfaces</b>                 | Herbaceous Saline Vegetation     |
| Built-up Area (settlement)                 | Flaxland                         |
| Surface Mines and Dumps                    | Scrub and Shrubland              |
| Transport Infrastructure                   | Gorse and/or Broom               |
| Urban Parkland/Open Space                  | Manuka and/or Kanuka             |
| <b>Water Bodies</b>                        | Broadleaved Indigenous Hardwoods |
| Lake or Pond                               | Mixed Exotic Shrubland           |
| Estuarine Open Water                       | <b>Forest</b>                    |
| <b>Cropland</b>                            | Forest - Harvested               |
| Short-rotation Cropland                    | Deciduous Hardwoods              |
| Orchard Vineyard and Other Perennial Crops | Indigenous Forest                |
| <b>Grassland, Sedge and Saltmarsh</b>      | Exotic Forest                    |
| High Producing Exotic Grassland            | Mangrove                         |
| Low Producing Grassland                    |                                  |



This graphic has been prepared by Boffa Miskell Limited on the specific instructions of our Client. It is solely for our Client's use in accordance with the agreed scope of work. Any use or reliance by a third party is at that party's own risk. Where information has been supplied by the Client or obtained from other external sources, it has been assumed that it is accurate. No liability or responsibility is accepted by Boffa Miskell Limited for any errors or omissions to the extent that they arise from inaccurate information provided by the Client or any external source.



This graphic has been prepared by Boffa Miskell Limited on the specific instructions of our Client. It is solely for our Client's use in accordance with the agreed scope of work. Any use or reliance by a third party is at that party's own risk. Where information has been supplied by the Client or obtained from other external sources, it has been assumed that it is accurate. No liability or responsibility is accepted by Boffa Miskell Limited for any errors or omissions to the extent that they arise from inaccurate information provided by the Client or any external source.



Data Sources: DigitalGlobe Aerials (2015), Auckland Council Aerials (2016), Jacobs, Boffa Miskell

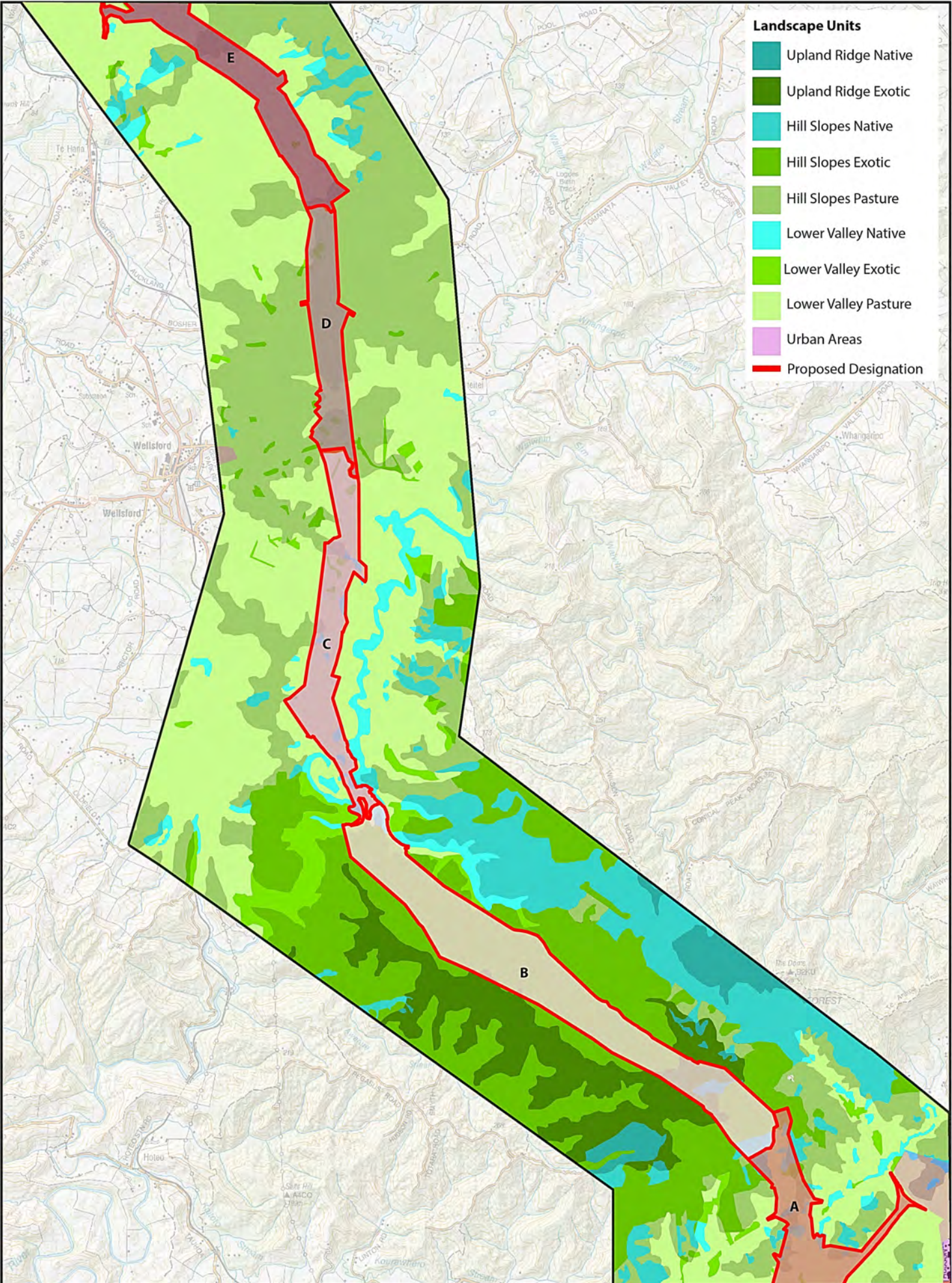
Projection: NZGD 2000 New Zealand Transverse Mercator

Legend

 Proposed Designation



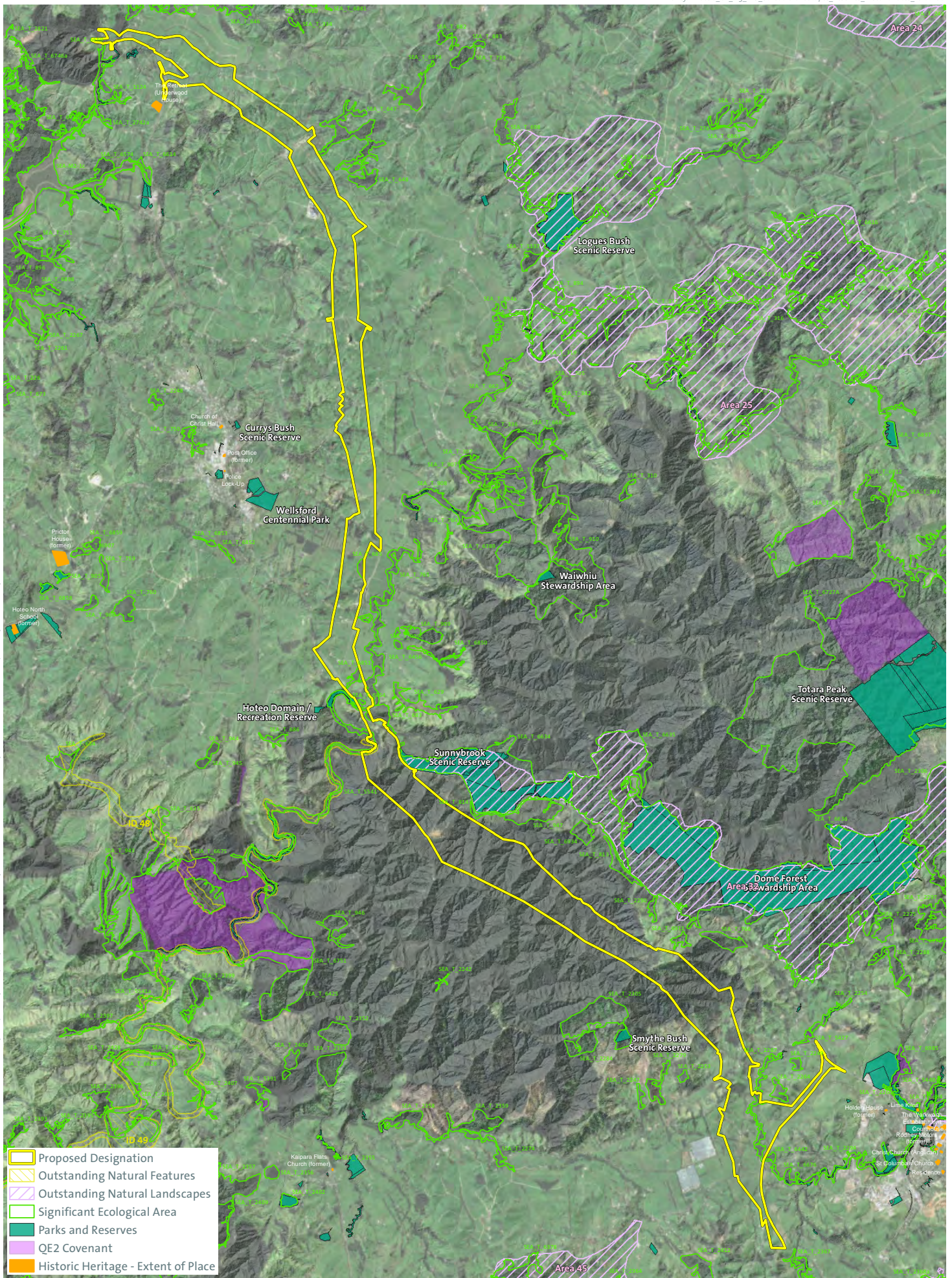
This graphic has been prepared by Boffa Miskell Limited on the specific instructions of our Client. It is solely for our Client's use in accordance with the agreed scope of work. Any use or reliance by a third party is at that party's own risk. Where information has been supplied by the Client or obtained from other external sources, it has been assumed that it is accurate. No liability or responsibility is accepted by Boffa Miskell Limited for any errors or omissions in the content that they arise from inaccurate information provided by the Client or any external source.



- Landscape Units**
- Upland Ridge Native
  - Upland Ridge Exotic
  - Hill Slopes Native
  - Hill Slopes Exotic
  - Hill Slopes Pasture
  - Lower Valley Native
  - Lower Valley Exotic
  - Lower Valley Pasture
  - Urban Areas
  - Proposed Designation



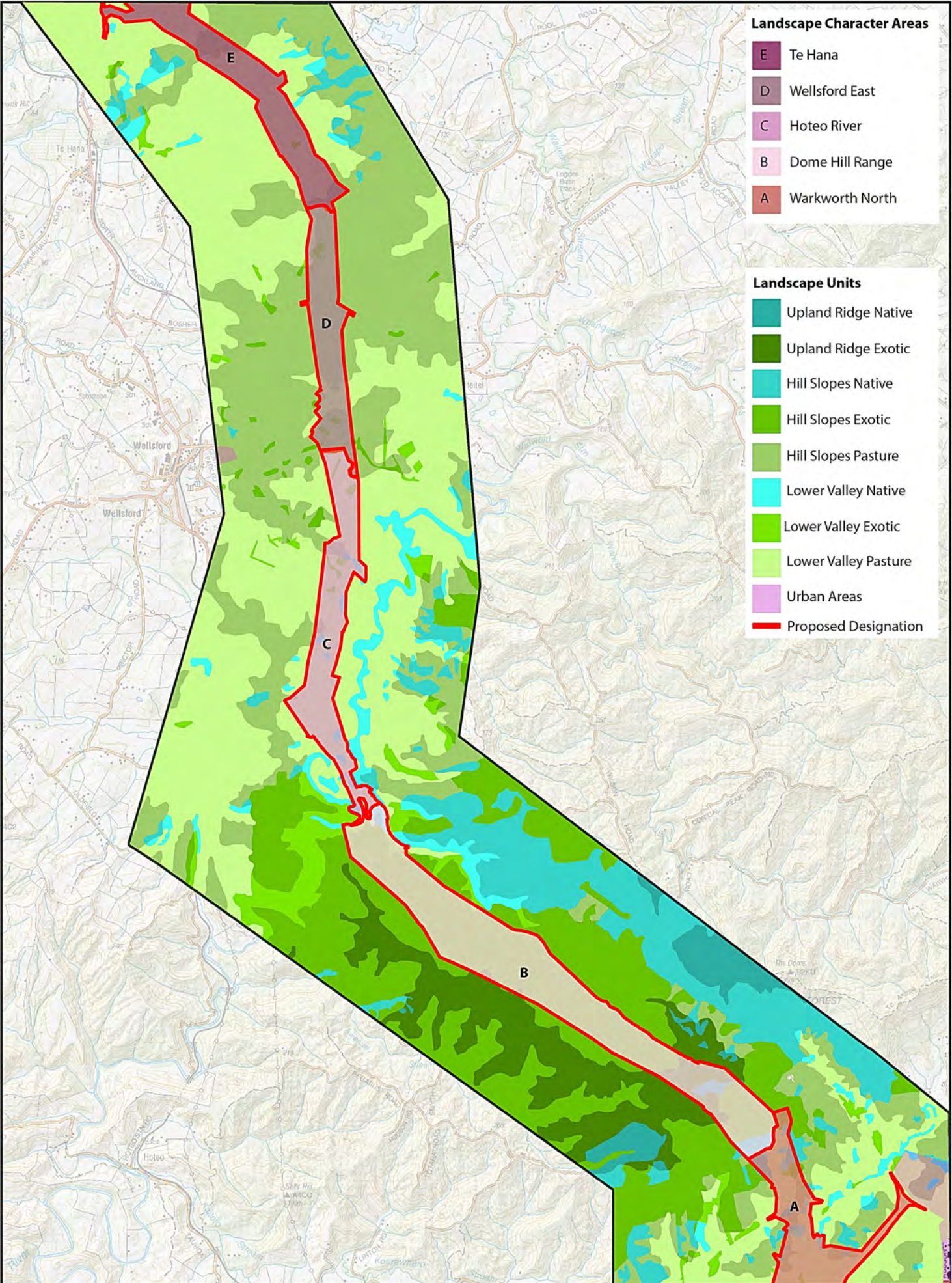
This graphic has been prepared by Boffa Miskell Limited on the specific instructions of our Client. It is solely for our Client's use in accordance with the agreed scope of work. Any use or reliance by a third party is at that party's own risk. Where information has been supplied by the Client or obtained from other external sources, it has been assumed that it is accurate. No liability or responsibility is accepted by Boffa Miskell Limited for any errors or omissions to the extent that they arise from inaccurate information provided by the Client or any external source.



- Proposed Designation
- Outstanding Natural Features
- Outstanding Natural Landscapes
- Significant Ecological Area
- Parks and Reserves
- QE2 Covenant
- Historic Heritage - Extent of Place



This graphic has been prepared by Boffa Miskell Limited on the specific instructions of our Client. It is solely for our Client's use in accordance with the agreed scope of work. Any use or reliance by a third party is at that party's own risk. Where information has been supplied by the Client or obtained from other external sources, it has been assumed that it is accurate. No liability or responsibility is accepted by Boffa Miskell Limited for any errors or omissions in the Client that they arise from inaccurate information provided by the Client or any external source.



**Landscape Character Areas**

- E Te Hana
- D Wellsford East
- C Hoteo River
- B Dome Hill Range
- A Warkworth North

**Landscape Units**

- Upland Ridge Native
- Upland Ridge Exotic
- Hill Slopes Native
- Hill Slopes Exotic
- Hill Slopes Pasture
- Lower Valley Native
- Lower Valley Exotic
- Lower Valley Pasture
- Urban Areas
- Proposed Designation

0 1 2 Km

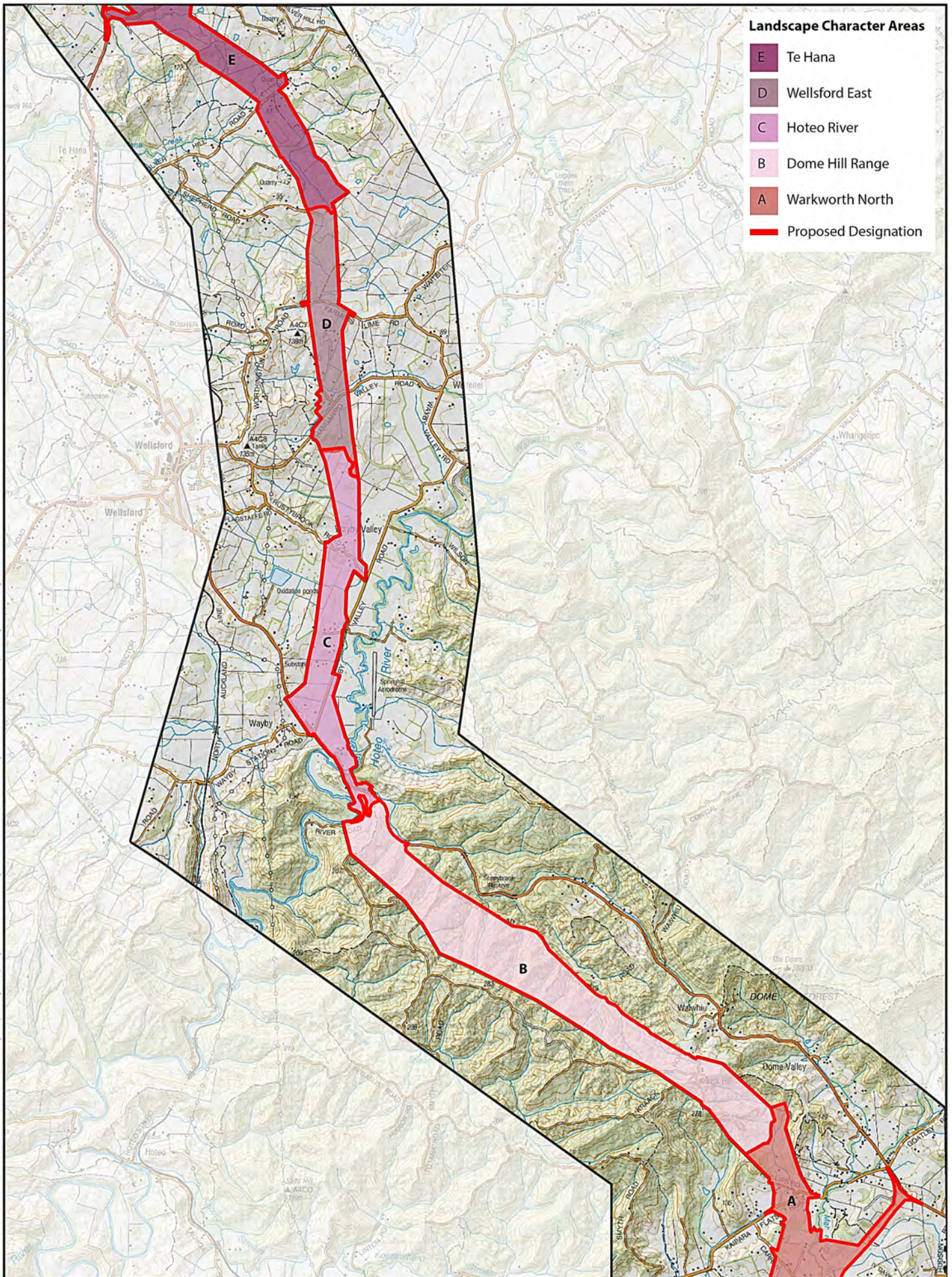
1:50,000 @ A3

Data Sources: DigitalGlobe Aerials (2015), Auckland Council Aerials (2016), Jacobs, Boffa Miskell  
 Projection: NZGD 2000 New Zealand Transverse Mercator

**A16090 WARKWORTH TO WELLSFORD DESIGNATION**  
**Figure LV10: Landscape Units and Landscape Character Areas**



This graphic has been prepared by Boffa Miskell Limited on the specific instructions of our Client. It is solely for our Client's use in accordance with the agreed scope of work. Any use or reliance by a third party is at their party's own risk. Where information has been supplied by the Client or obtained from other external sources, it has been assumed that it is accurate. No liability or responsibility is accepted by Boffa Miskell Limited for any errors or omissions in the extent that they arise from inaccurate information provided by the Client or any external source.



**Landscape Character Areas**

- E Te Hana
- D Wellsford East
- C Hotoe River
- B Dome Hill Range
- A Warkworth North
- Proposed Designation





The Zone of Theoretical Visibility (ZTV) analysis indicates areas from where an activity or project may be visible within the study area. It can not and does not indicate the nature or magnitude of visual effects, or project appearance.

The accuracy of the ZTV analysis is limited by the level of detail, or cell size, of the underlying digital elevation model. The cell size of the DEM used for this ZTV is 4 metres.

The ZTV analysis is based on lines-of-sight generated using a "bare ground" digital elevation model, and does not take into account the screening effects of intervening vegetation and/or structures in the landscape.

This graphic has been prepared by Boffa Miskell Limited on the specific instructions of our Client. It is solely for our Client's use in accordance with the agreed scope of work. Any use or reliance by a third party is at that party's own risk. Where information has been supplied by the Client or obtained from other external sources, it has been assumed that it is accurate. No liability or responsibility is accepted by Boffa Miskell Limited for any errors or omissions that may arise from inaccurate information provided by the Client or any external source.



This graphic has been prepared by Boffa Miskell Limited on the specific instructions of our Client. It is solely for our Client's use in accordance with the agreed scope of work. Any use or reliance by a third party is at that party's own risk. Where information has been supplied by the Client or obtained from other external sources, it has been assumed that it is accurate. No liability or responsibility is accepted by Boffa Miskell Limited for any errors or omissions to the extent that they arise from inaccurate information provided by the Client or any external source.

