

- Indicative Alignment
- ▭ Designation boundary
- ▨ Indicative bridge / tunnel
- Watercourse
- Representative watercourses**
- Intermittent
- Permanent

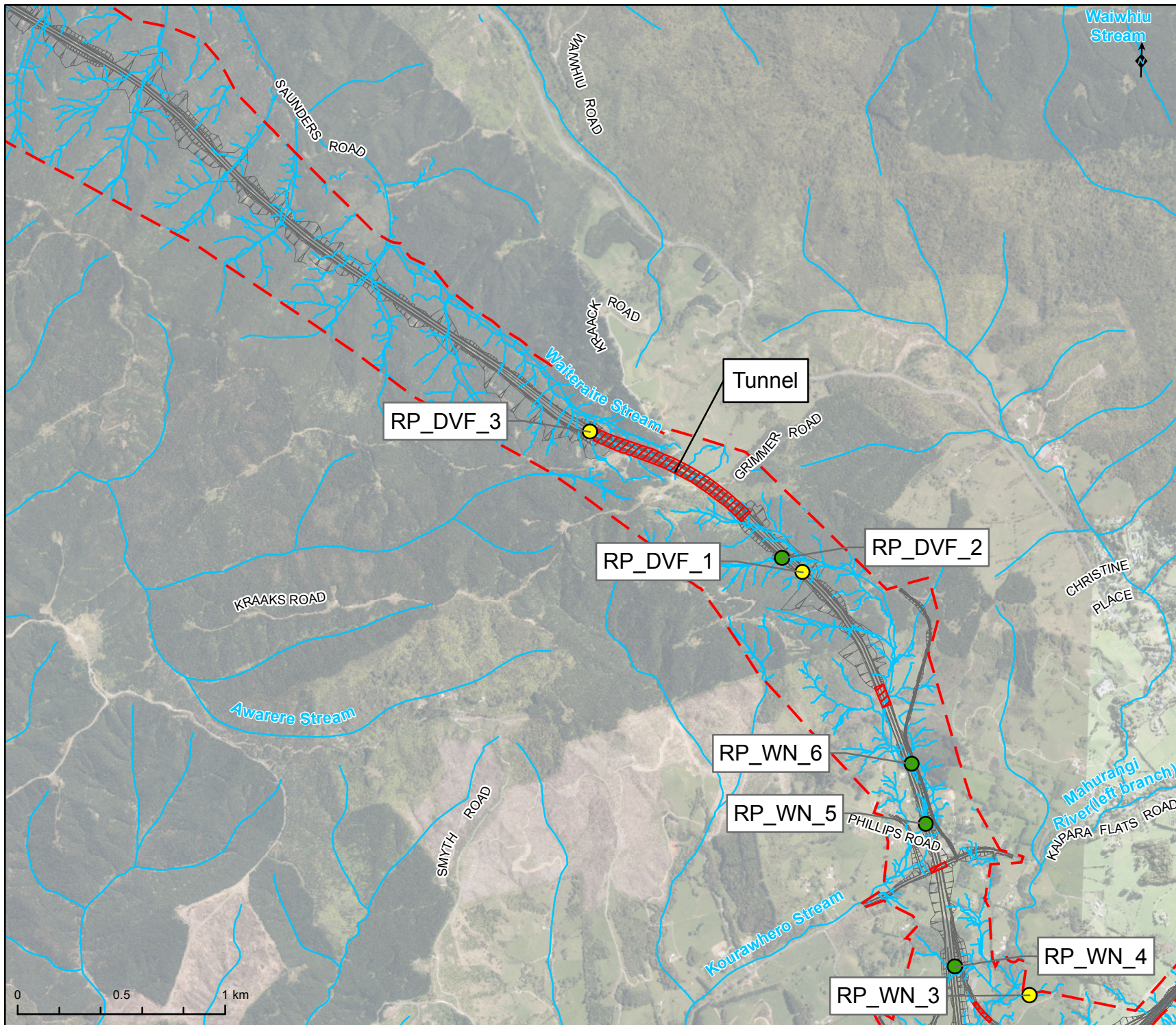
Conditions - Map 1



WARKWORTH TO WELLSFORD

REPRESENTATIVE WATERCOURSES





Waiwhiu Stream

- Indicative Alignment
- [-] Designation boundary
- [//] Indicative bridge / tunnel
- Watercourse
- Representative watercourses**
- Intermittent
- Permanent

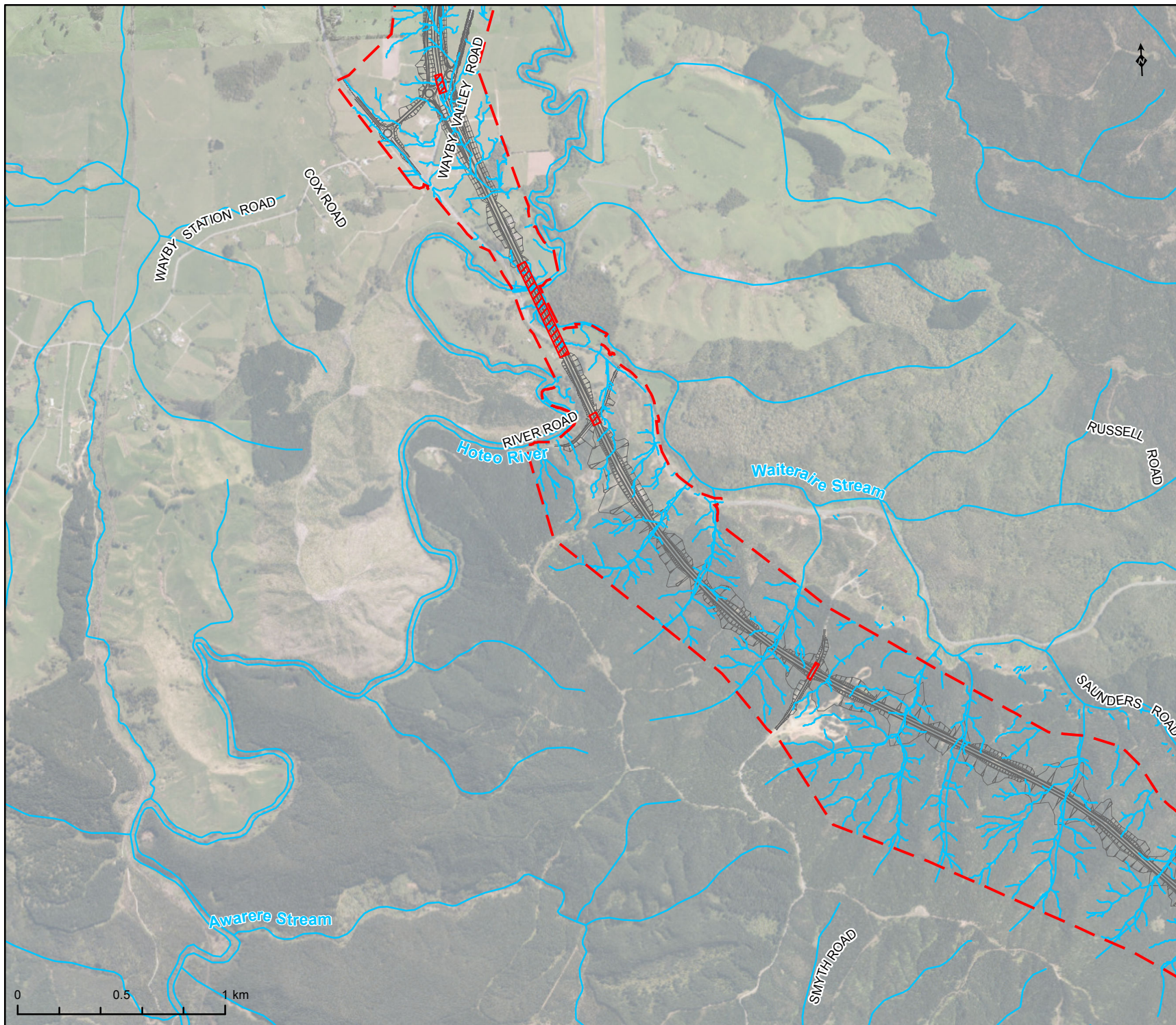
Conditions - Map 2



WARKWORTH TO WELLSFORD

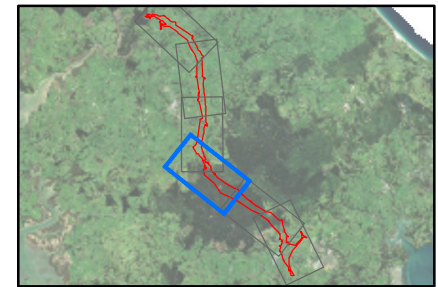
REPRESENTATIVE WATERCOURSES





- Indicative Alignment
 - - - Designation boundary
 - ▨ Indicative bridge / tunnel
 - Watercourse
- Representative watercourses**
- Intermittent
 - Permanent

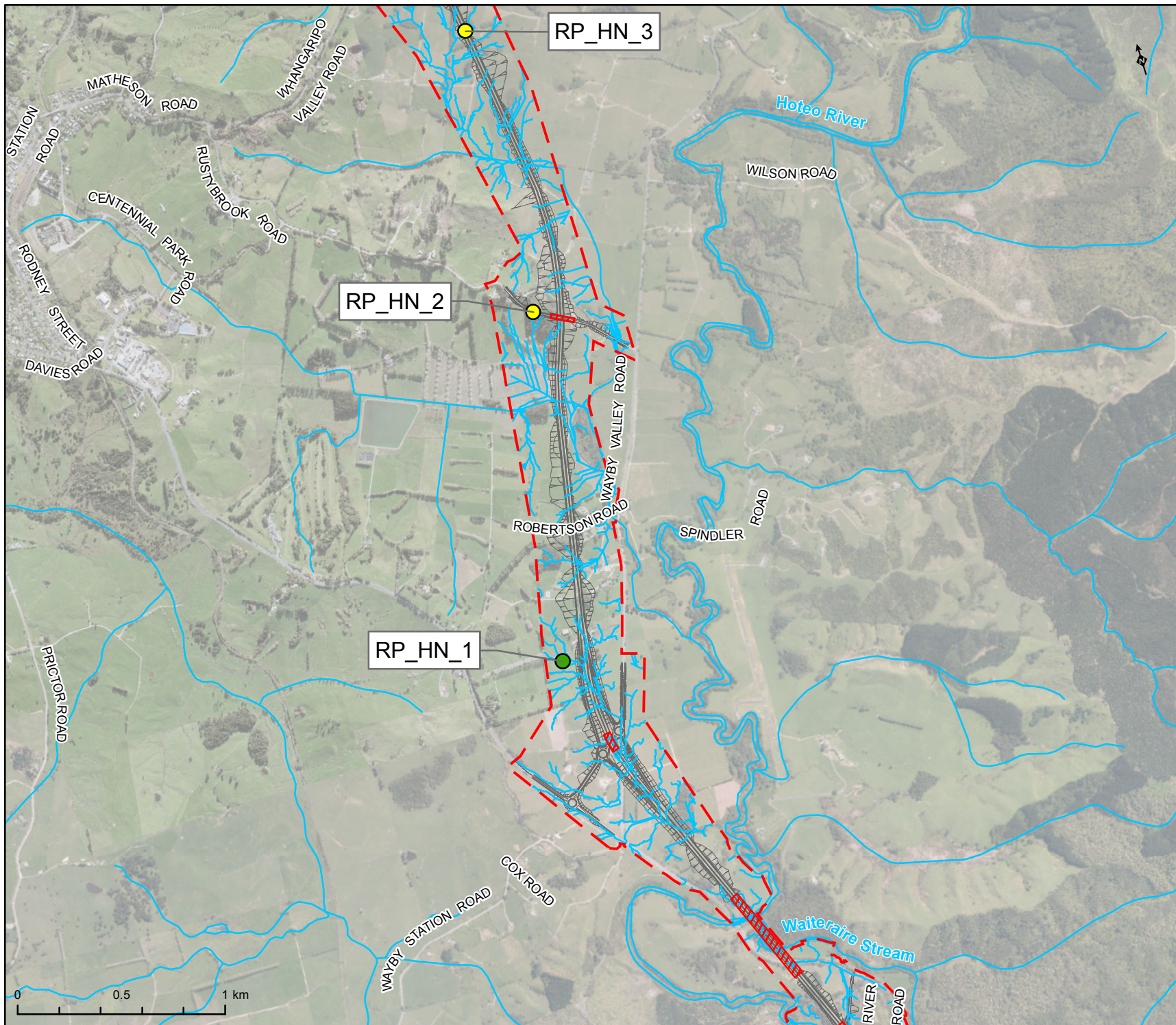
Conditions - Map 3



WARKWORTH TO WELLSFORD

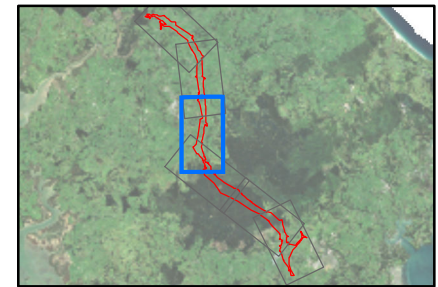
REPRESENTATIVE WATERCOURSES





- Indicative Alignment
 - ▭ Designation boundary
 - ▨ Indicative bridge / tunnel
 - Watercourse
- Representative watercourses**
- Intermittent
 - Permanent

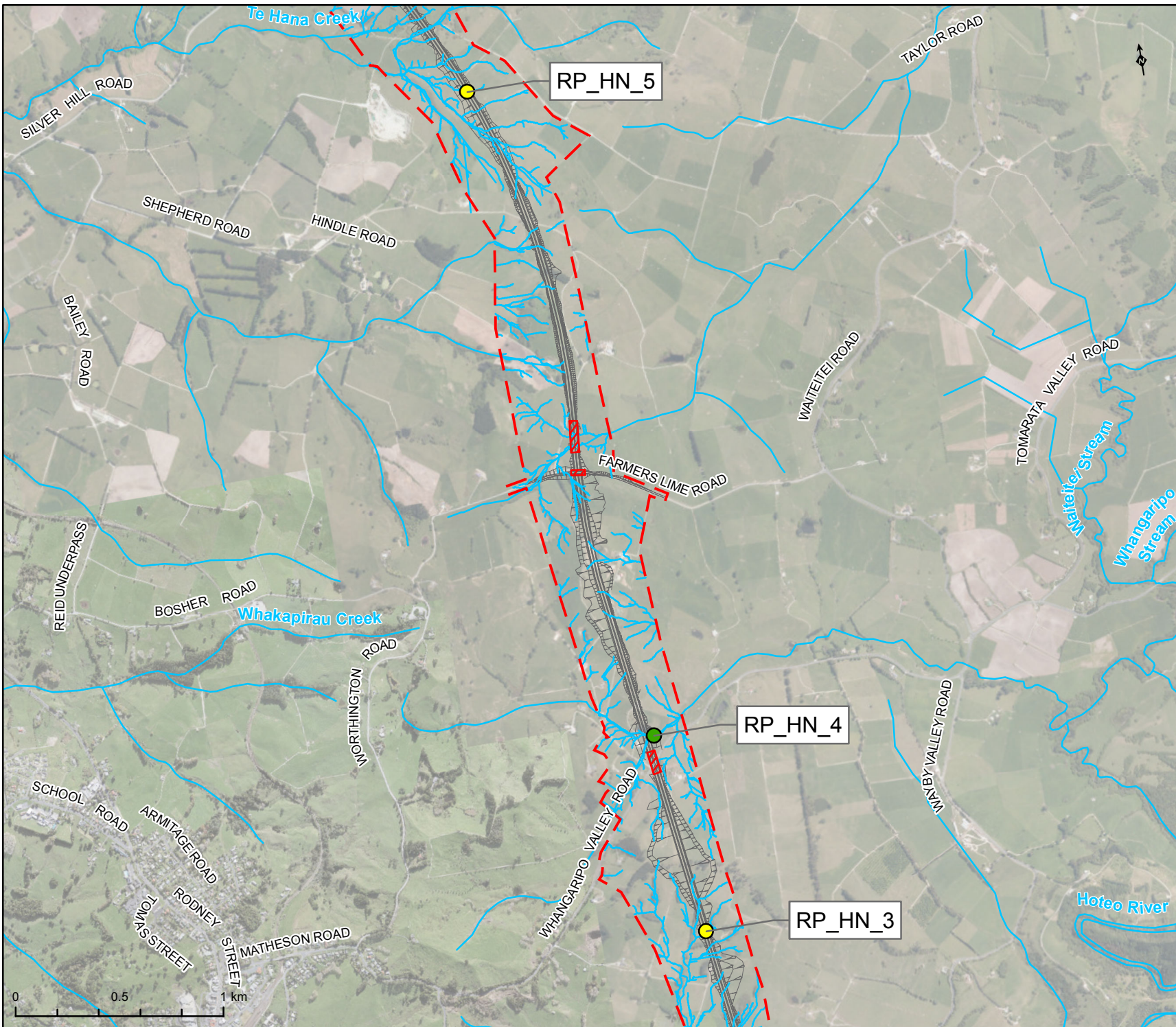
Conditions - Map 4



WARKWORTH TO WELLSFORD

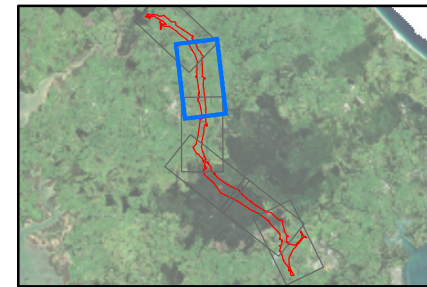
REPRESENTATIVE WATERCOURSES





- Indicative Alignment
 - ▭ Designation boundary
 - ▨ Indicative bridge / tunnel
 - Watercourse
- Representative watercourses**
- Intermittent
 - Permanent

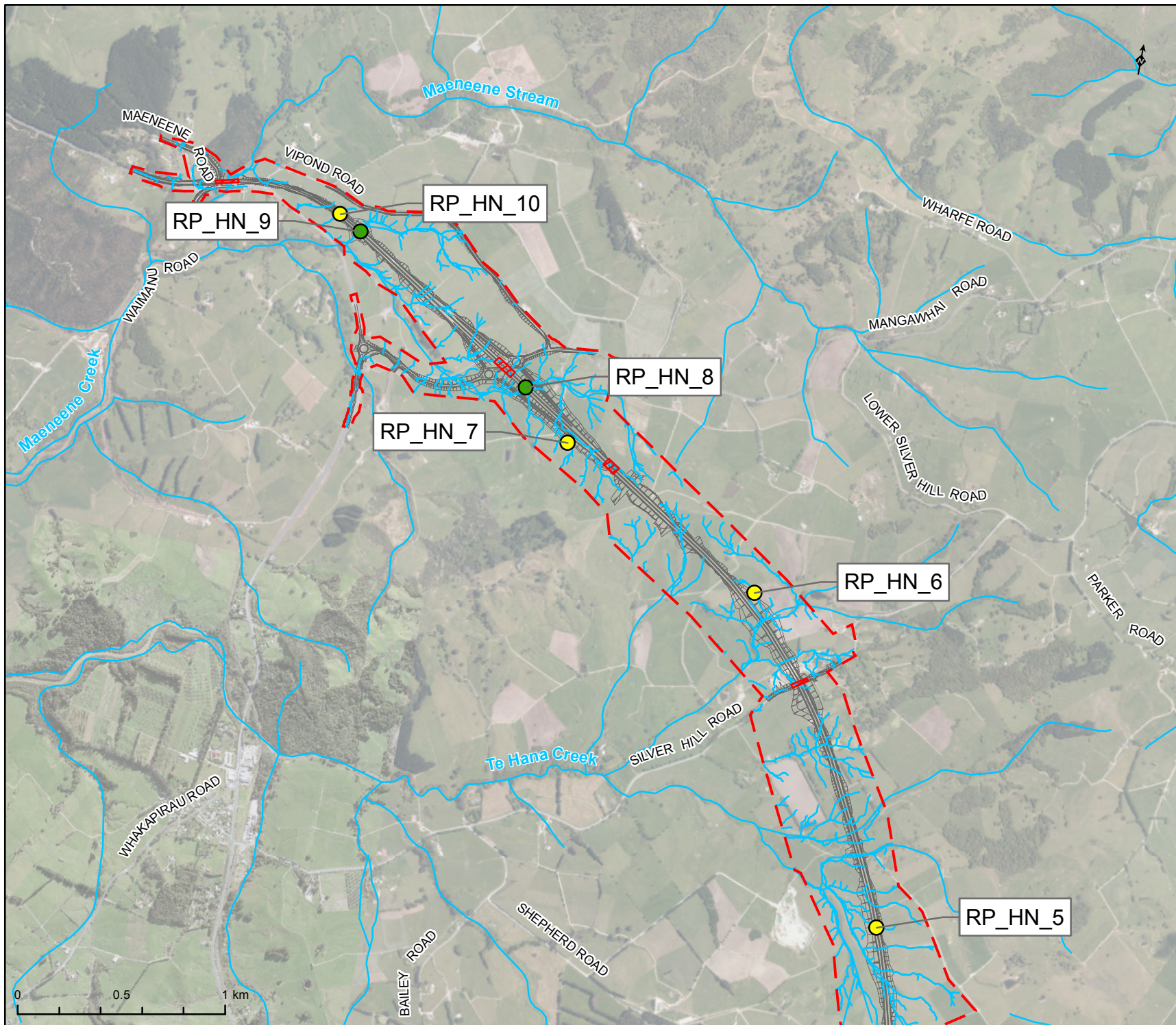
Conditions - Map 5



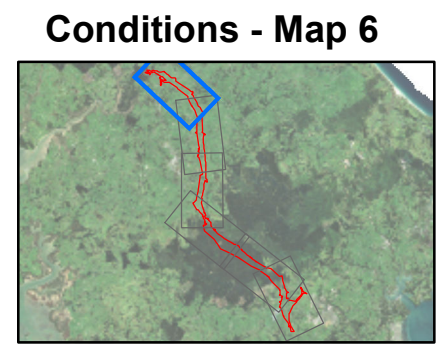
WARKWORTH TO WELLSFORD

REPRESENTATIVE WATERCOURSES





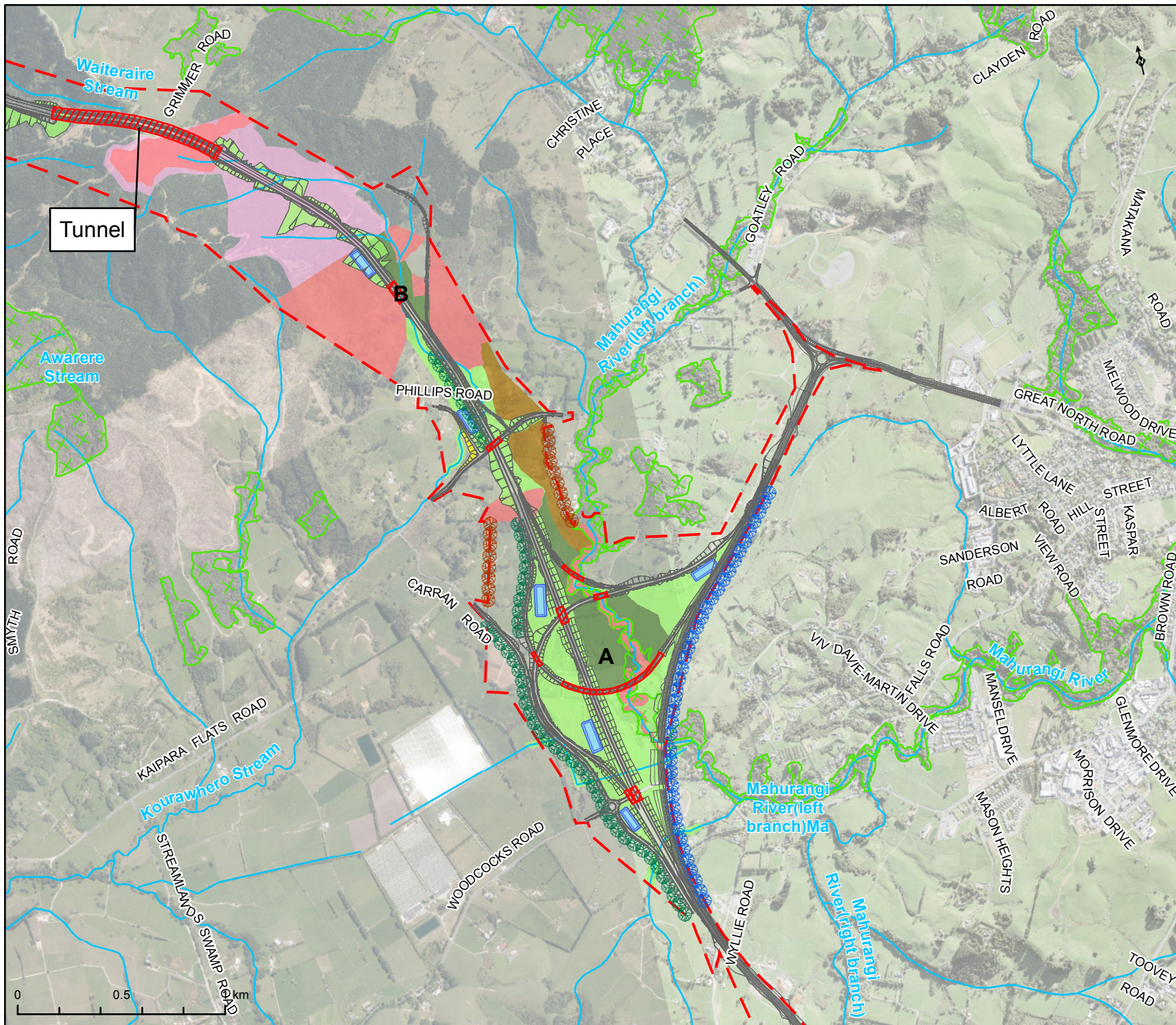
- Indicative Alignment
 - ▭ Designation boundary
 - ▨ Indicative bridge / tunnel
 - Watercourse
- Representative watercourses**
- Intermittent
 - Permanent



WARKWORTH TO WELLSFORD

REPRESENTATIVE WATERCOURSES





- Indicative Alignment
- ▭ Designation boundary
- ▨ Indicative bridge / tunnel
- P2W screen planting
- Screen planting
- Existing shelter belt
- Stormwater treatment wetlands - indicative locations
- Watercourse
- Indigenous vegetation
- Ecology vegetation mitigation
- Landscape mitigation planting
- Fauna habitat and flyway mitigation
- Mitigation for fragmentation
- Grass batter slopes
- ⊠ Significant ecological area - Terrestrial

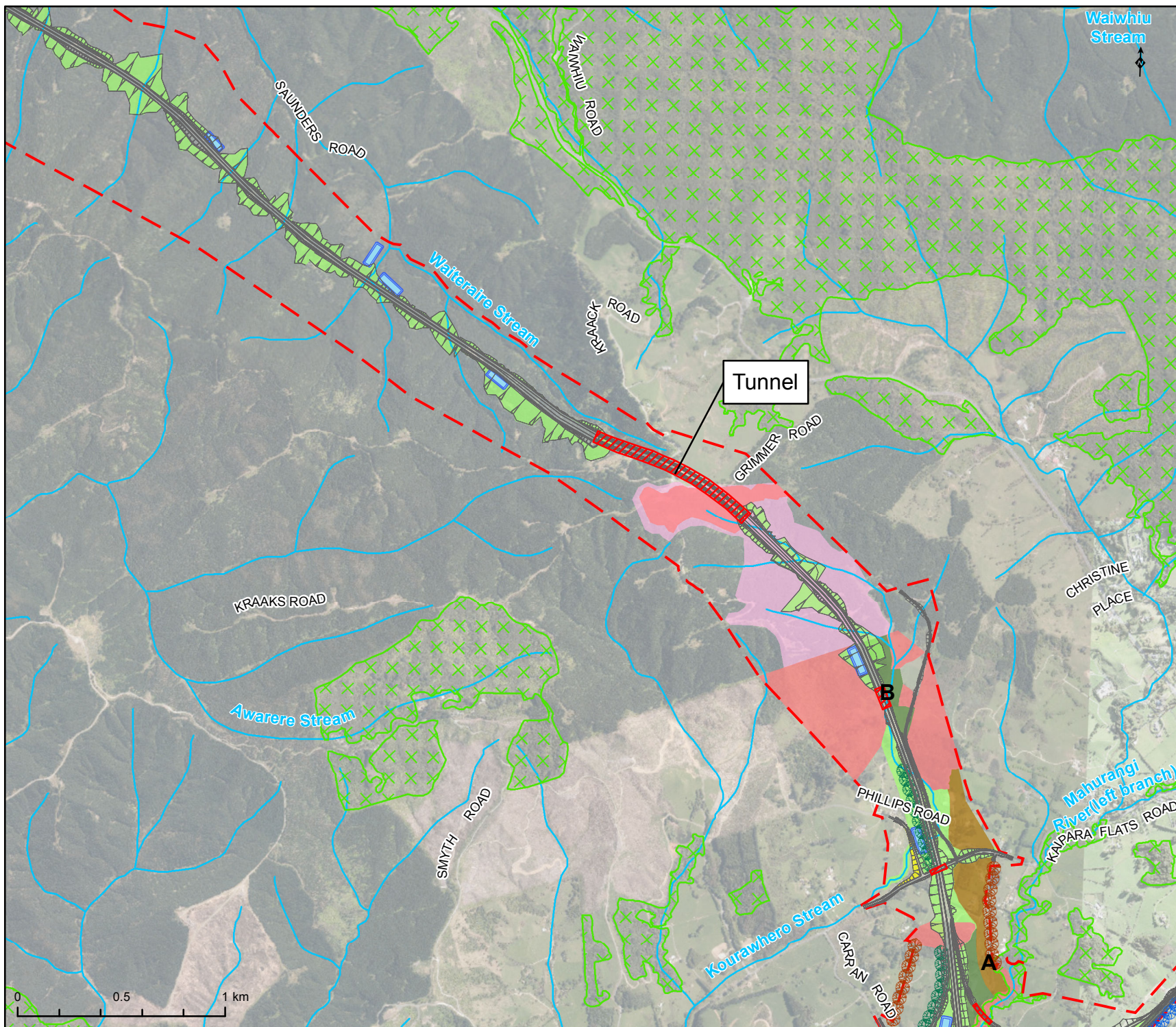
Conditions - Map 7



WARKWORTH TO WELLSFORD

MITIGATION SITES





- Indicative Alignment
- [- - -] Designation boundary
- [Red Hatched] Indicative bridge / tunnel
- [Blue Circles] P2W screen planting
- [Green Circles] Screen planting
- [Orange Circles] Existing shelter belt
- [Blue Box] Stormwater treatment wetlands - indicative locations
- [Blue Line] Watercourse
- [Pink Box] Indigenous vegetation
- [Dark Green Box] Ecology vegetation mitigation
- [Light Green Box] Landscape mitigation planting
- [Pink Box] Fauna habitat and flyway mitigation
- [Brown Box] Mitigation for fragmentation
- [Yellow Box] Grass batter slopes
- [Green X Box] Significant ecological area - Terrestrial

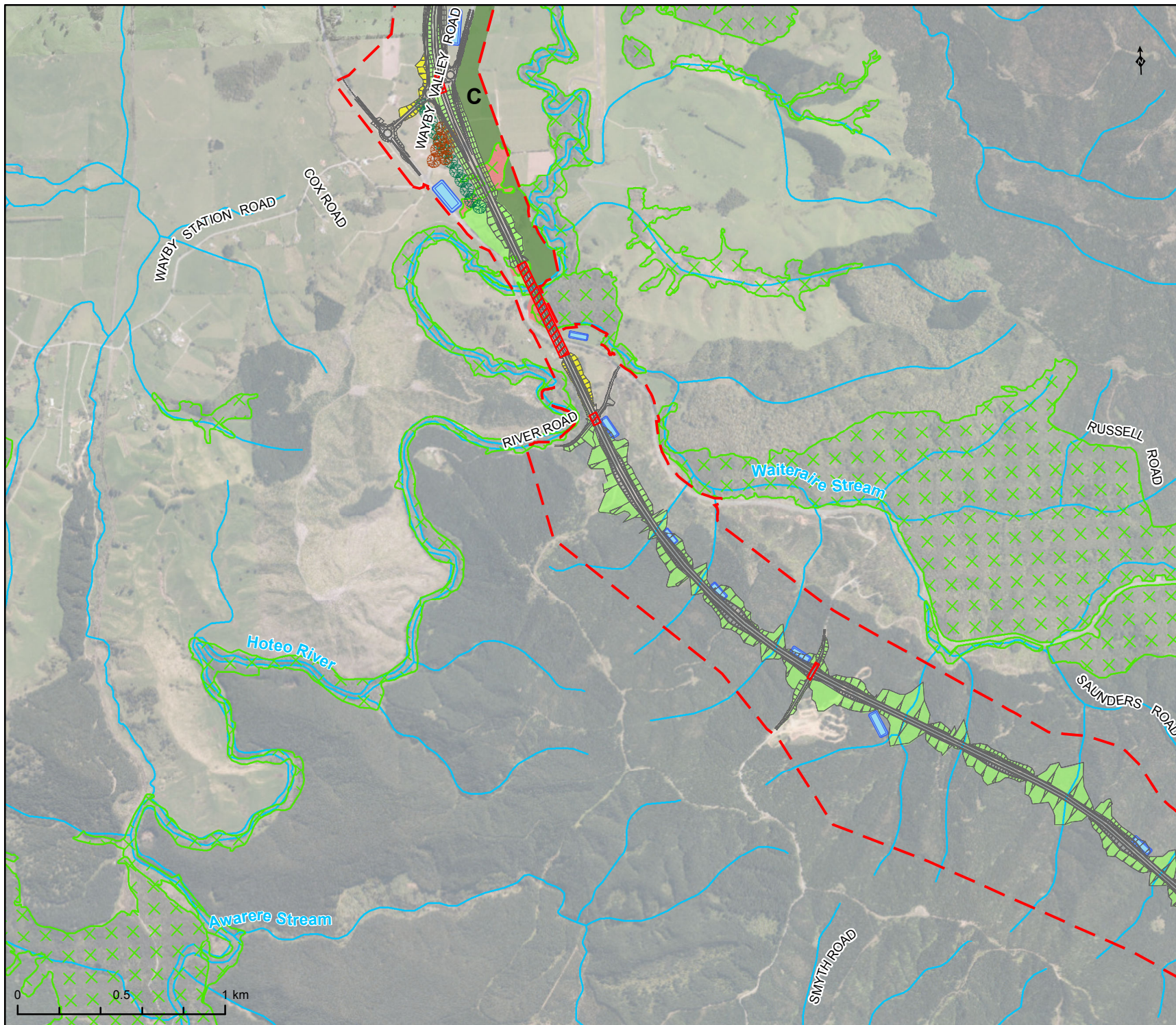
Conditions - Map 8



WARKWORTH TO WELLSFORD

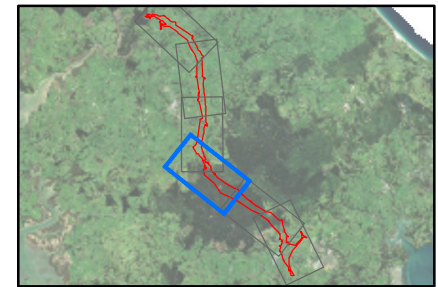
MITIGATION SITES





- Indicative Alignment
- [-] Designation boundary
- [//] Indicative bridge / tunnel
- [Blue Circle with X] P2W screen planting
- [Green Circle with X] Screen planting
- [Brown Circle with X] Existing shelter belt
- [Blue Rectangle] Stormwater treatment wetlands - indicative locations
- [Blue Line] Watercourse
- [Pink Area] Indigenous vegetation
- [Green Area] Ecology vegetation mitigation
- [Light Green Area] Landscape mitigation planting
- [Pink Area] Fauna habitat and flyway mitigation
- [Brown Area] Mitigation for fragmentation
- [Yellow Area] Grass batter slopes
- [Green X Area] Significant ecological area - Terrestrial

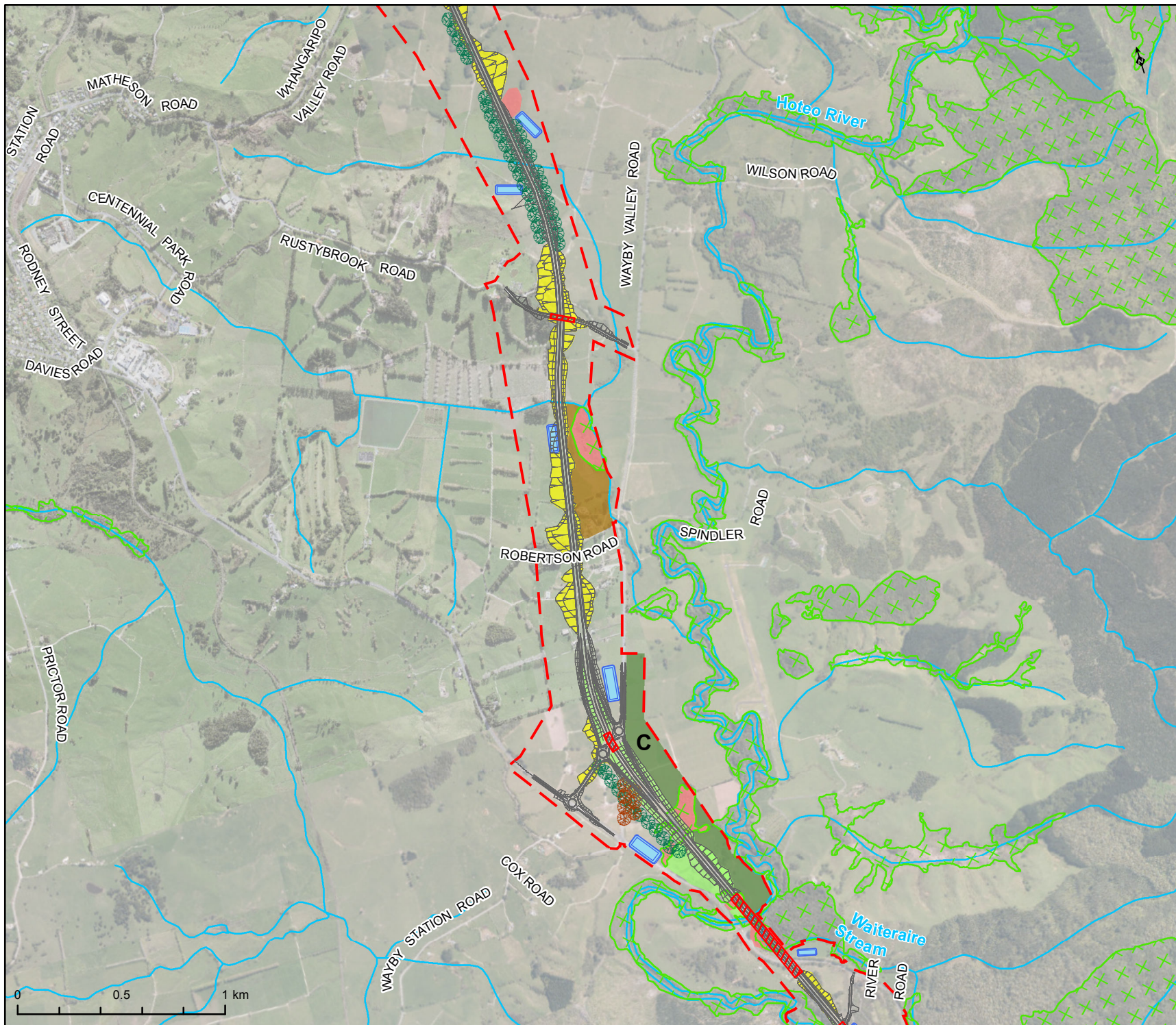
Conditions - Map 9



WARKWORTH TO WELLSFORD

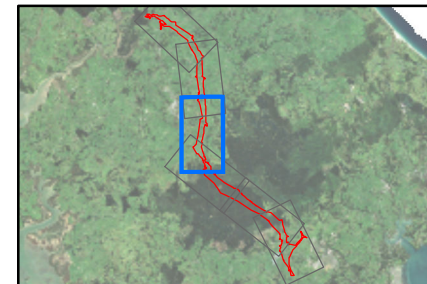
MITIGATION SITES





- Indicative Alignment
- ▭ Designation boundary
- ▨ Indicative bridge / tunnel
- P2W screen planting
- Screen planting
- Existing shelter belt
- ▭ Stormwater treatment wetlands - indicative locations
- Watercourse
- Indigenous vegetation
- Ecology vegetation mitigation
- Landscape mitigation planting
- Fauna habitat and flyway mitigation
- Mitigation for fragmentation
- Grass batter slopes
- Significant ecological area - Terrestrial

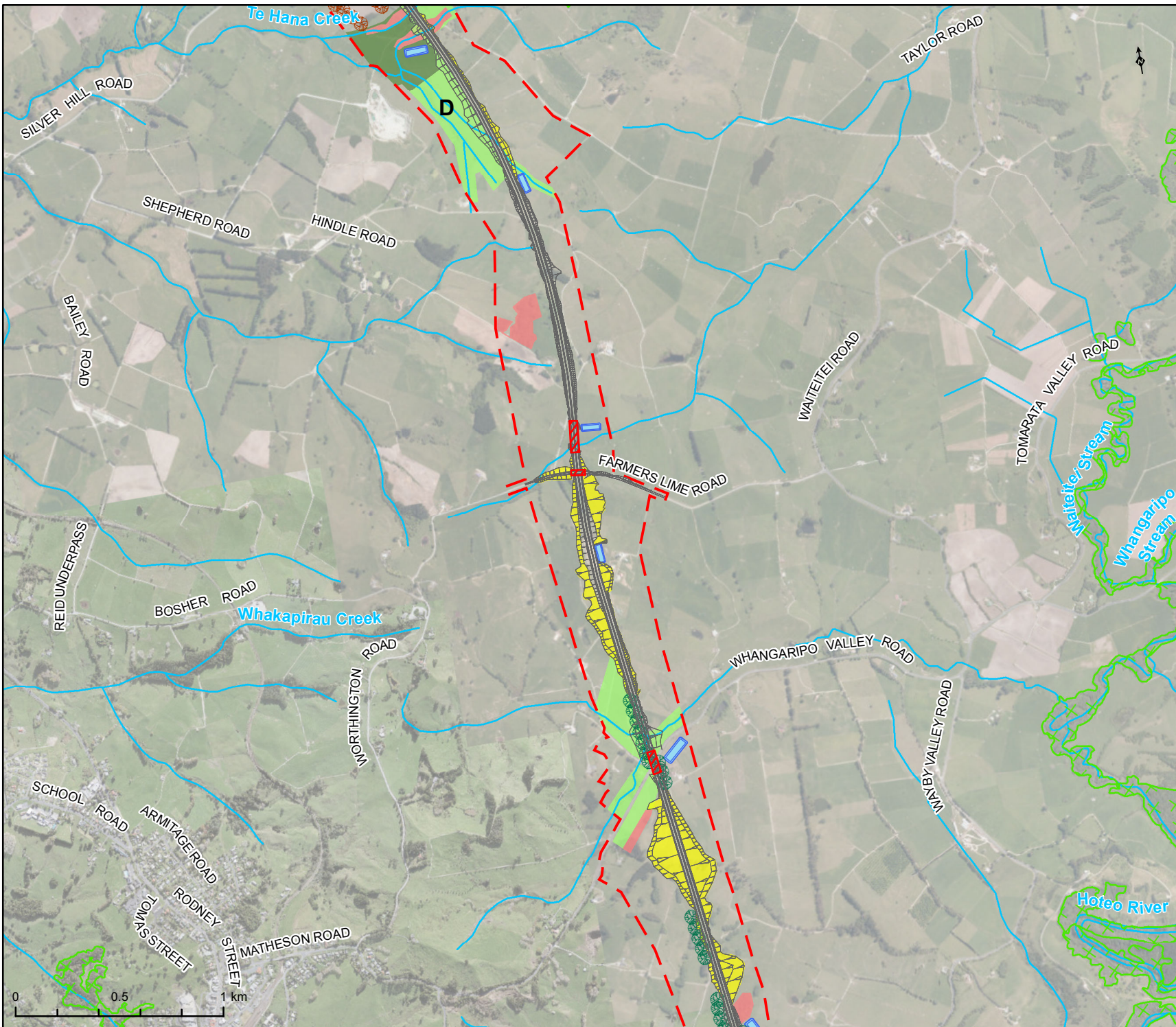
Conditions - Map 10



WARKWORTH TO WELLSFORD

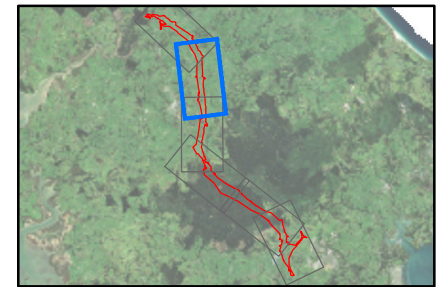
MITIGATION SITES





- Indicative Alignment
- ▭ Designation boundary
- ▨ Indicative bridge / tunnel
- ⊗ P2W screen planting
- ⊗ Screen planting
- ⊗ Existing shelter belt
- ▭ Stormwater treatment wetlands - indicative locations
- Watercourse
- ▭ Indigenous vegetation
- ▭ Ecology vegetation mitigation
- ▭ Landscape mitigation planting
- ▭ Fauna habitat and flyway mitigation
- ▭ Mitigation for fragmentation
- ▭ Grass batter slopes
- ⊗ Significant ecological area - Terrestrial

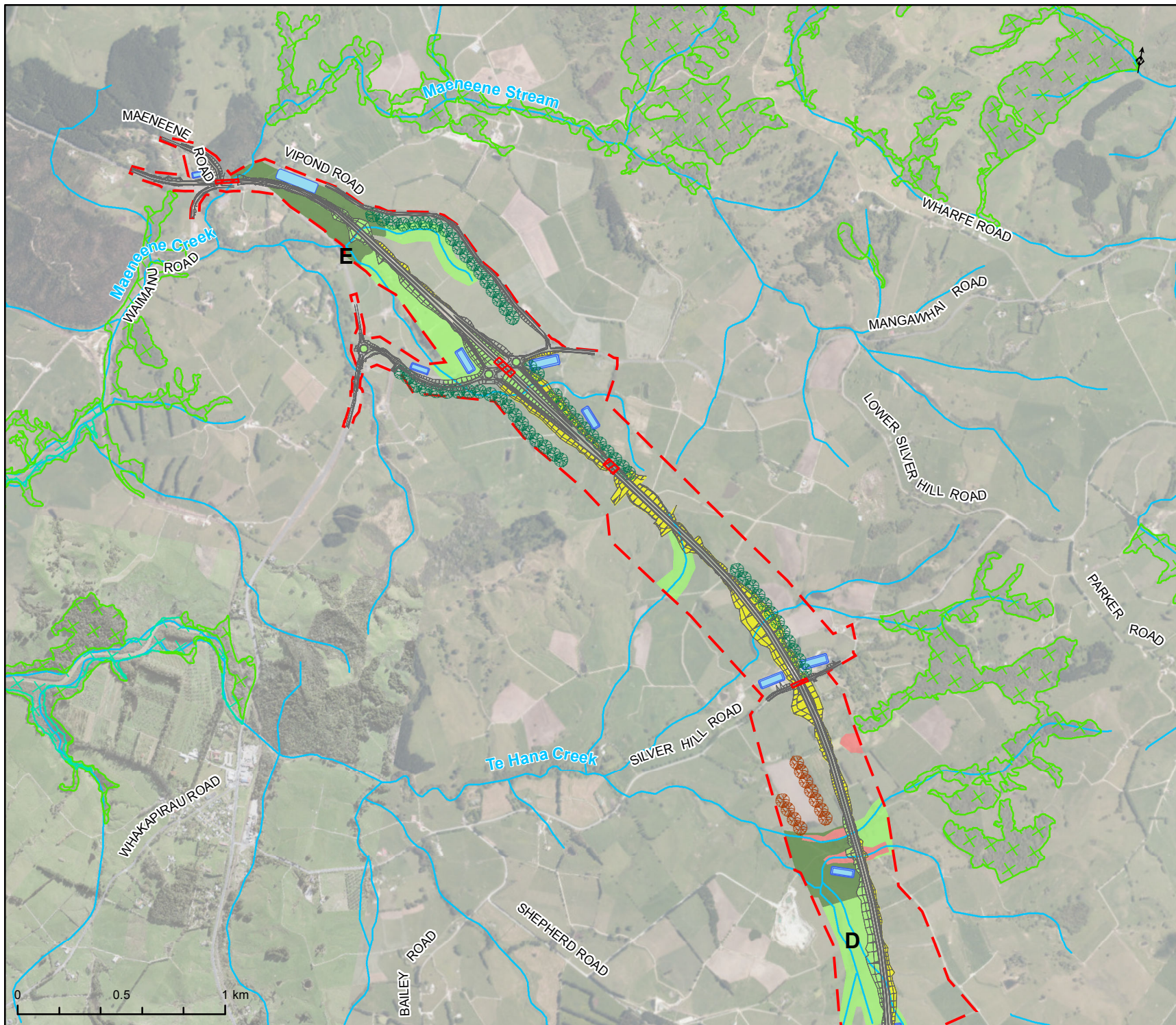
Conditions - Map 11



WARKWORTH TO WELLSFORD

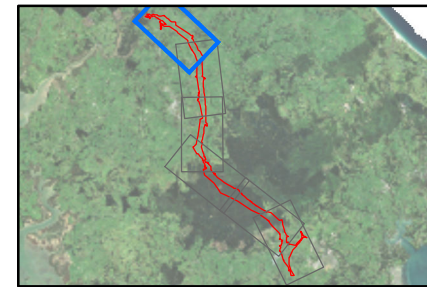
MITIGATION SITES





- Indicative Alignment
- Designation boundary
- Indicative bridge / tunnel
- P2W screen planting
- Screen planting
- Existing shelter belt
- Stormwater treatment wetlands - indicative locations
- Watercourse
- Indigenous vegetation
- Ecology vegetation mitigation
- Landscape mitigation planting
- Fauna habitat and flyway mitigation
- Mitigation for fragmentation
- Grass batter slopes
- Significant ecological area - Terrestrial
- Significant ecological area - Marine 2

Conditions - Map 12

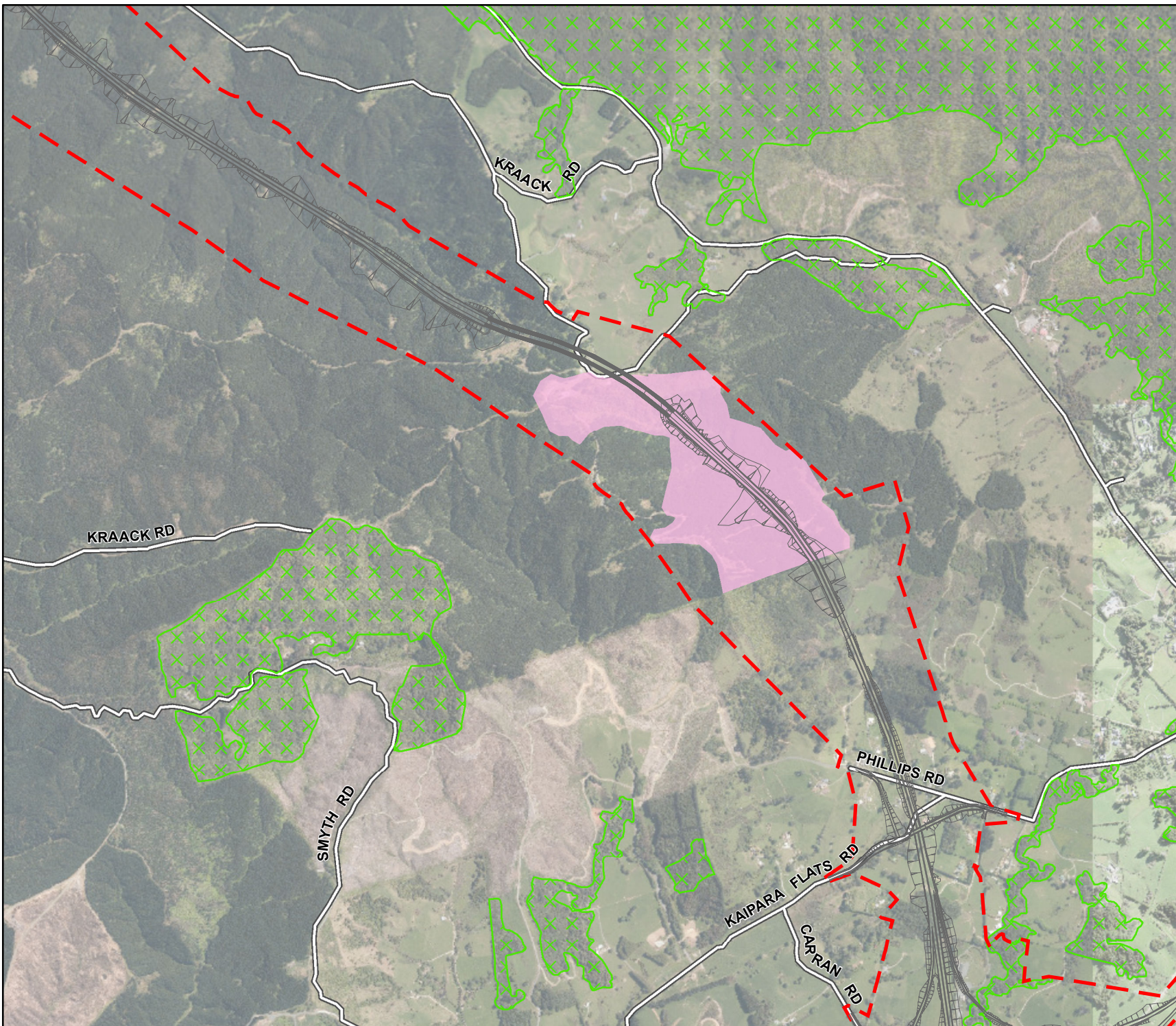


WARKWORTH TO WELLSFORD

MITIGATION SITES

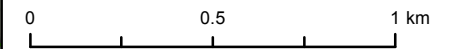
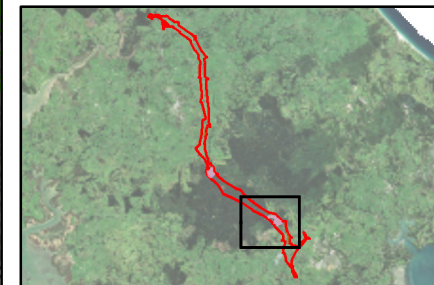




- Indicative Alignment
- [- - -] Designation boundary
- █ Fauna habitat and flyway mitigation
- ▨ Significant ecological area - Terrestrial

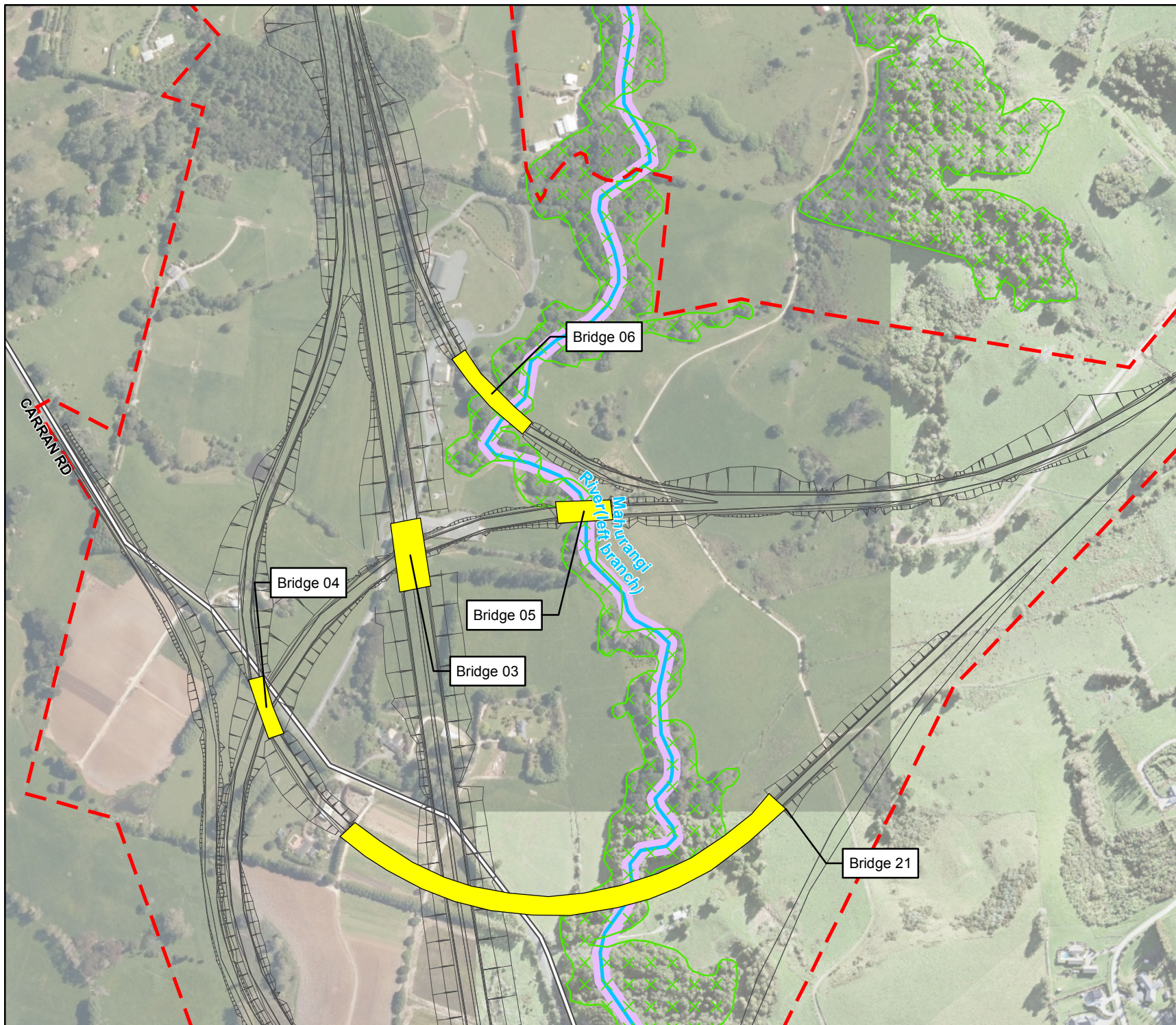
Conditions - Map 13



WARKWORTH TO WELLSFORD

FAUNA HABITAT AND FLYWAY MITIGATION





- Indicative Alignment
- - - Designation boundary
- Watercourse
- Mahurangi River (Left branch)
- Indicative bridge
- ⊠ Significant ecological area -Terrestrial

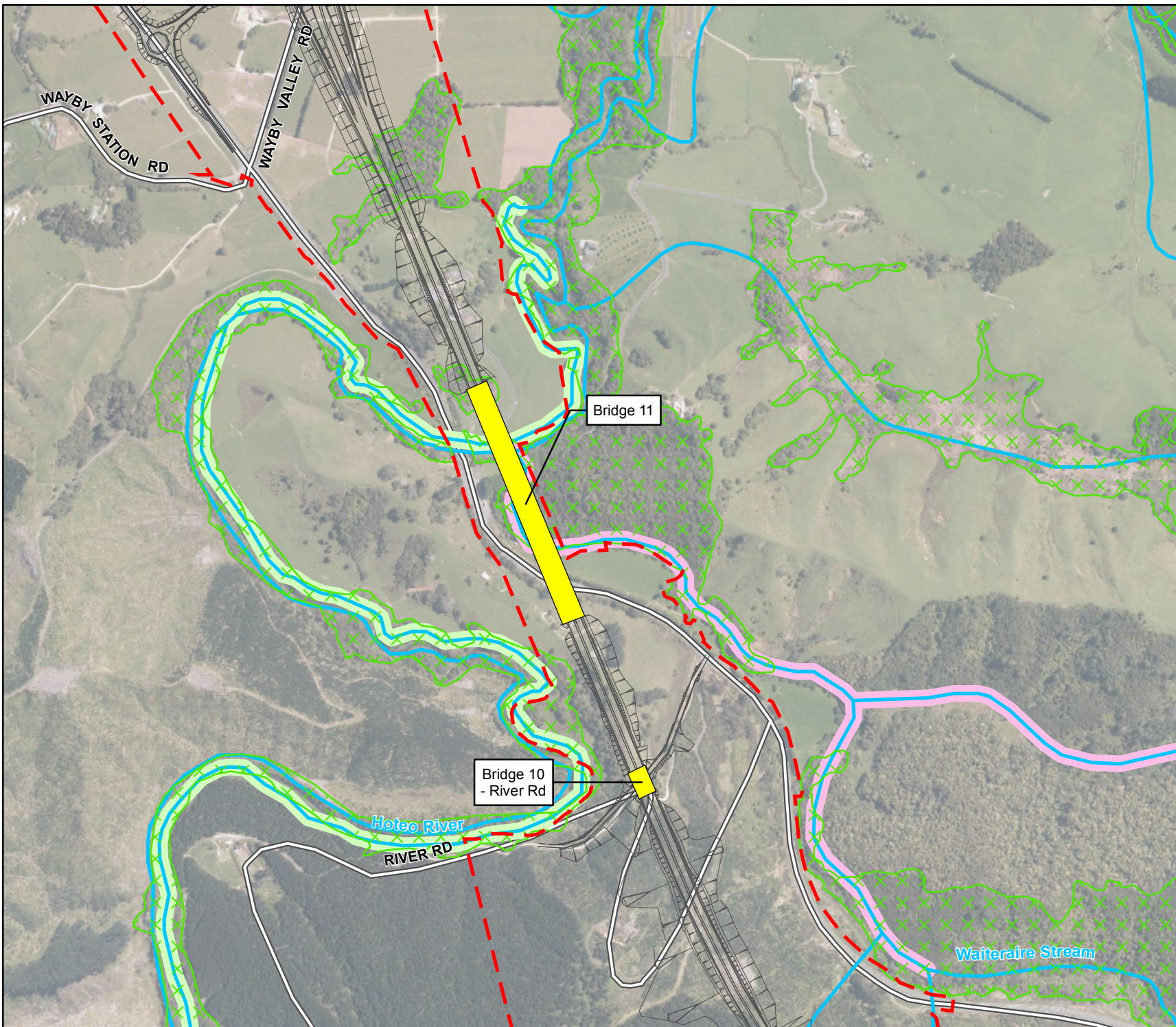
Conditions - Map 14



WARKWORTH TO WELLSFORD

BRIDGE STRUCTURES
IN WATERCOURSES





- Indicative Alignment
- [- - -] Designation boundary
- Watercourse
- Hoteo River
- Waiteraire Stream
- Indicative bridge
- ⊗ Significant ecological area
- Terrestrial

Conditions - Map 15

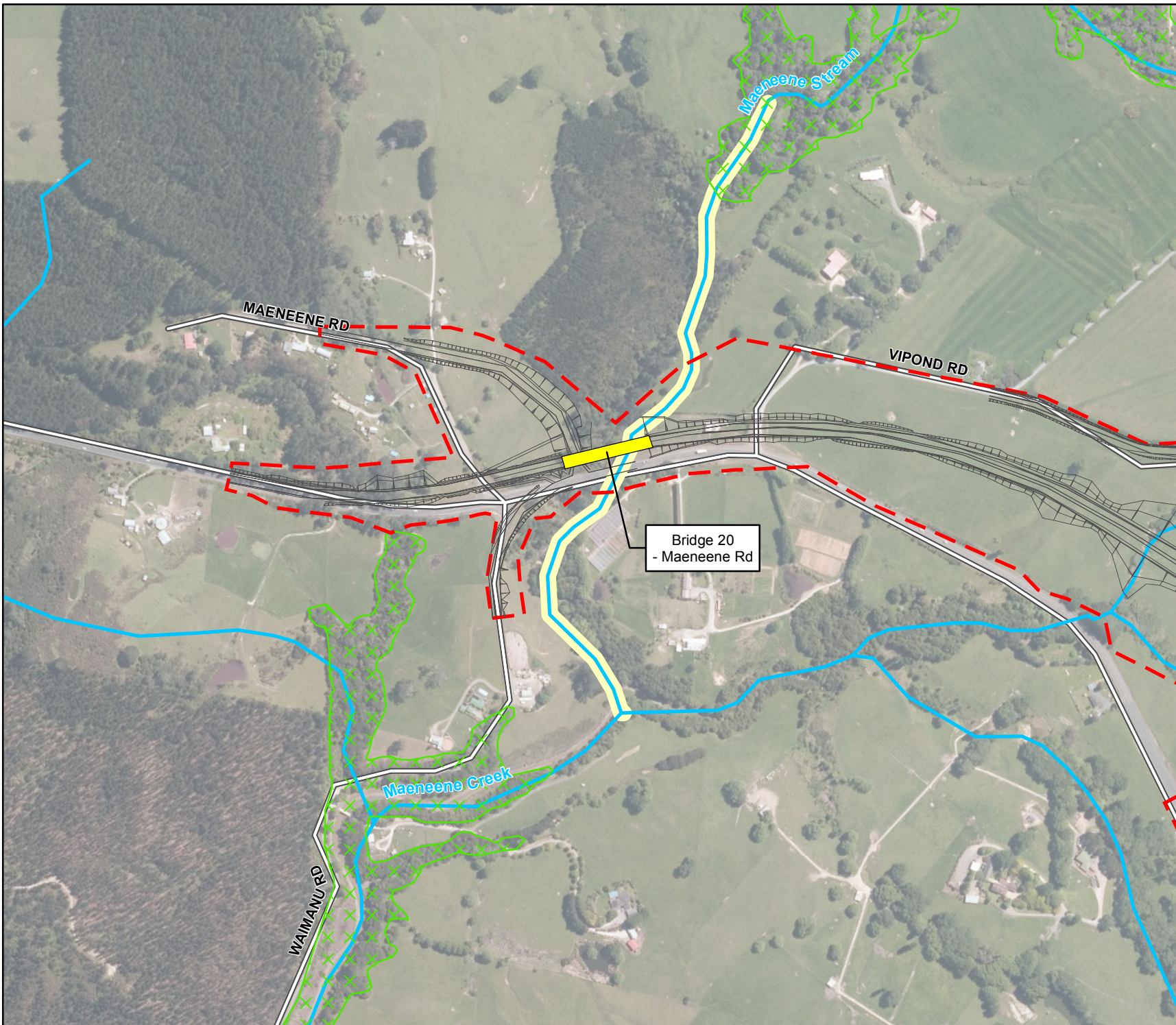


0 100 200 300 m

WARKWORTH TO WELLSFORD

BRIDGE STRUCTURES
IN WATERCOURSES





- Indicative Alignment
- - - Designation boundary
- Watercourse
- Maeneene Stream
- Indicative bridge
- Significant ecological area
- Terrestrial

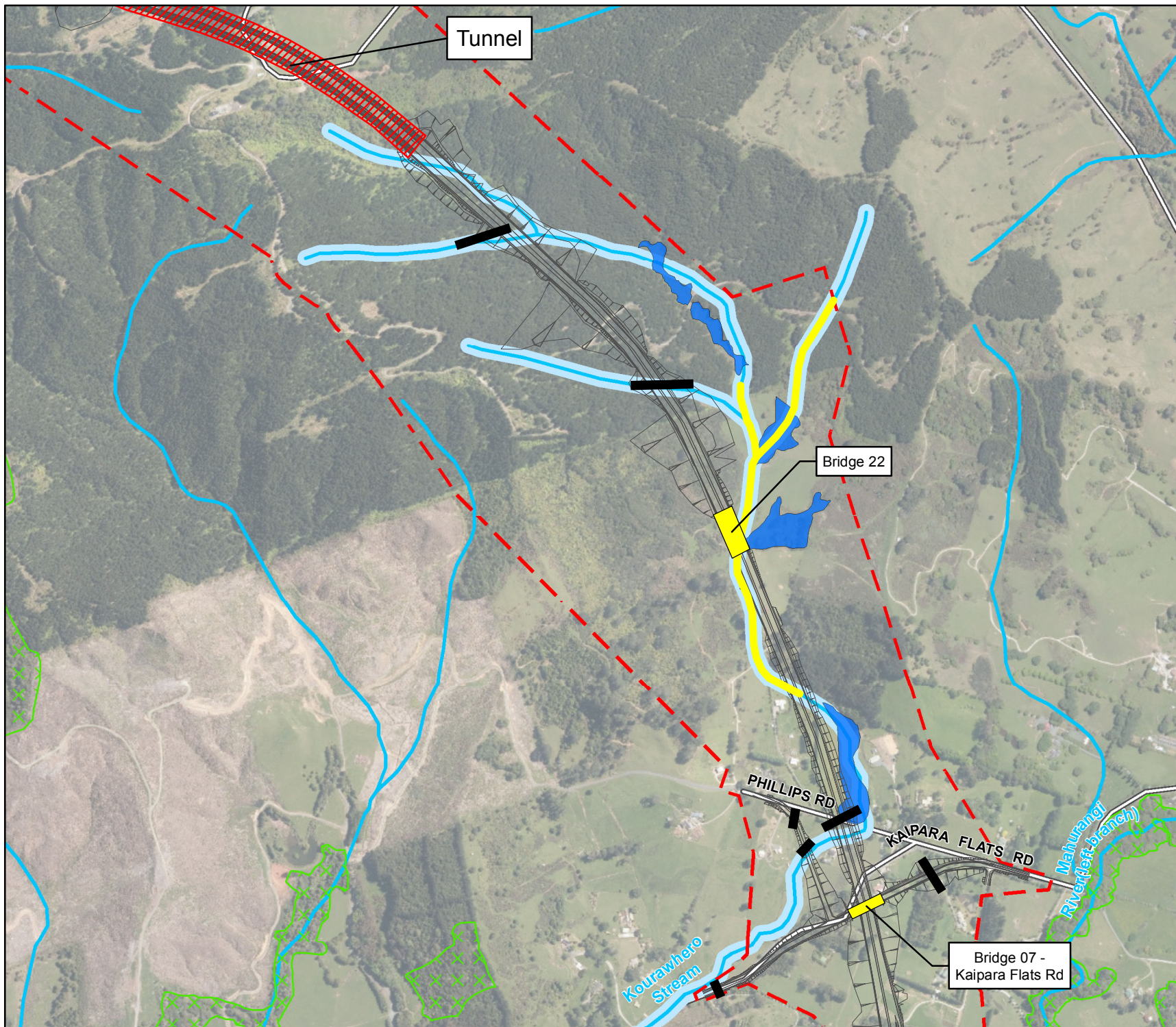
Conditions - Map 16



WARKWORTH TO WELLSFORD

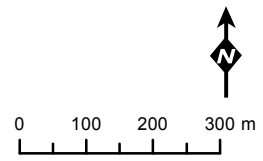
BRIDGE STRUCTURES
IN WATERCOURSES





- Indicative Alignment
- [- - -] Designation boundary
- Watercourse
- Section of Kourawhero Stream to be bridged
- Wetland complex
- Indicative bridge
- Culvert
- [X X X X] Significant ecological area -Terrestrial

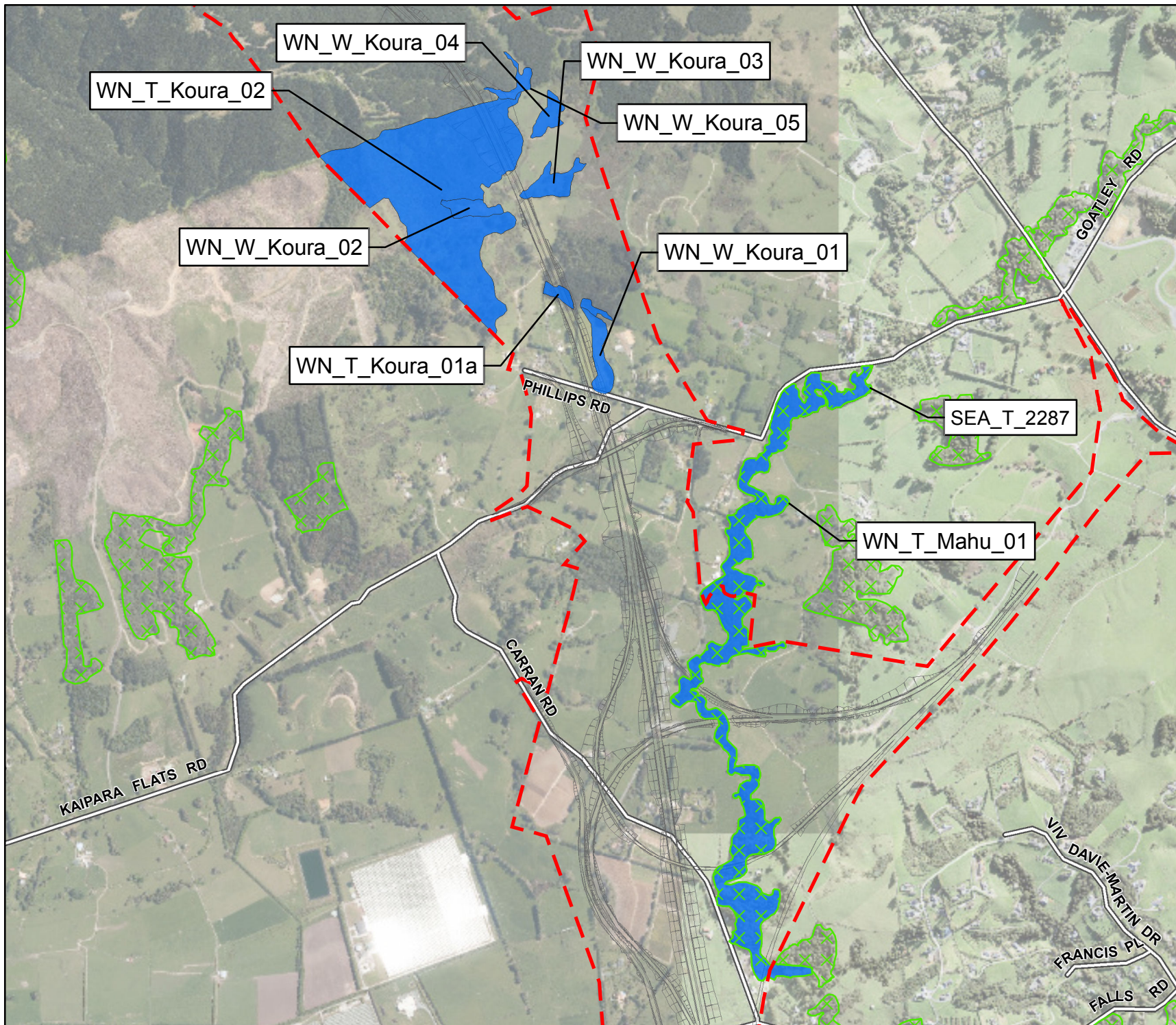
Conditions - Map 17



WARKWORTH TO WELLSFORD

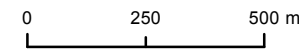
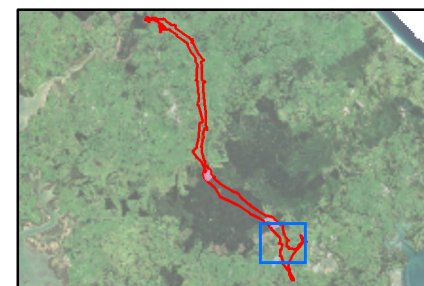
CROSSING OF THE KOURAWHERO STREAM AND ASSOCIATED WETLAND COMPLEX





- Indicative Alignment
- Ecological sites
- ⎓ Designation boundary
- ⊗ Significant ecological area - Terrestrial

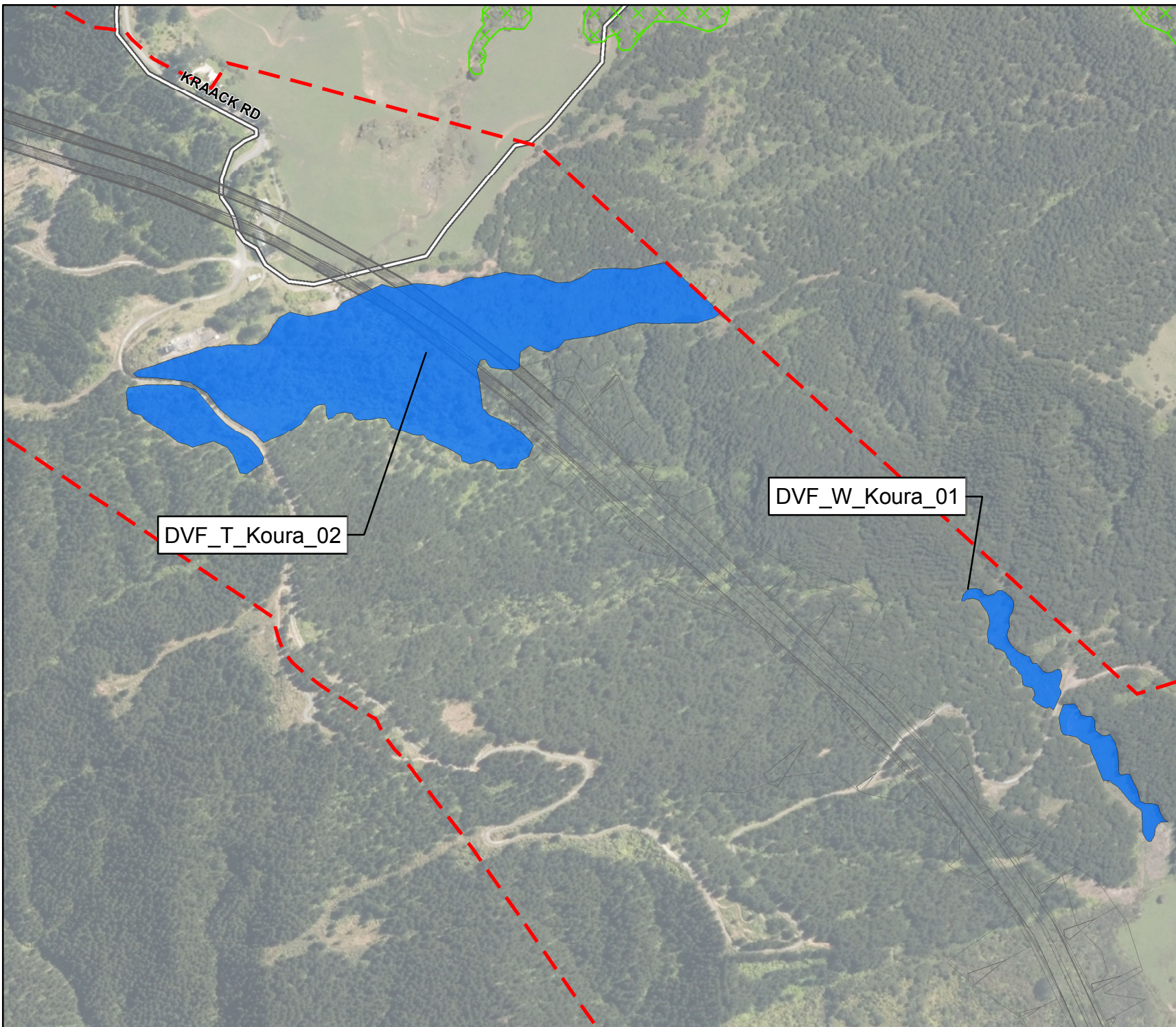
Conditions - Map 18



WARKWORTH TO WELLSFORD

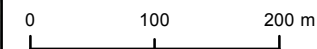
ECOLOGICAL SITES





- Indicative Alignment
- Ecological sites
- ⌈⌋ Designation boundary
- ⊠ Significant ecological area - Terrestrial

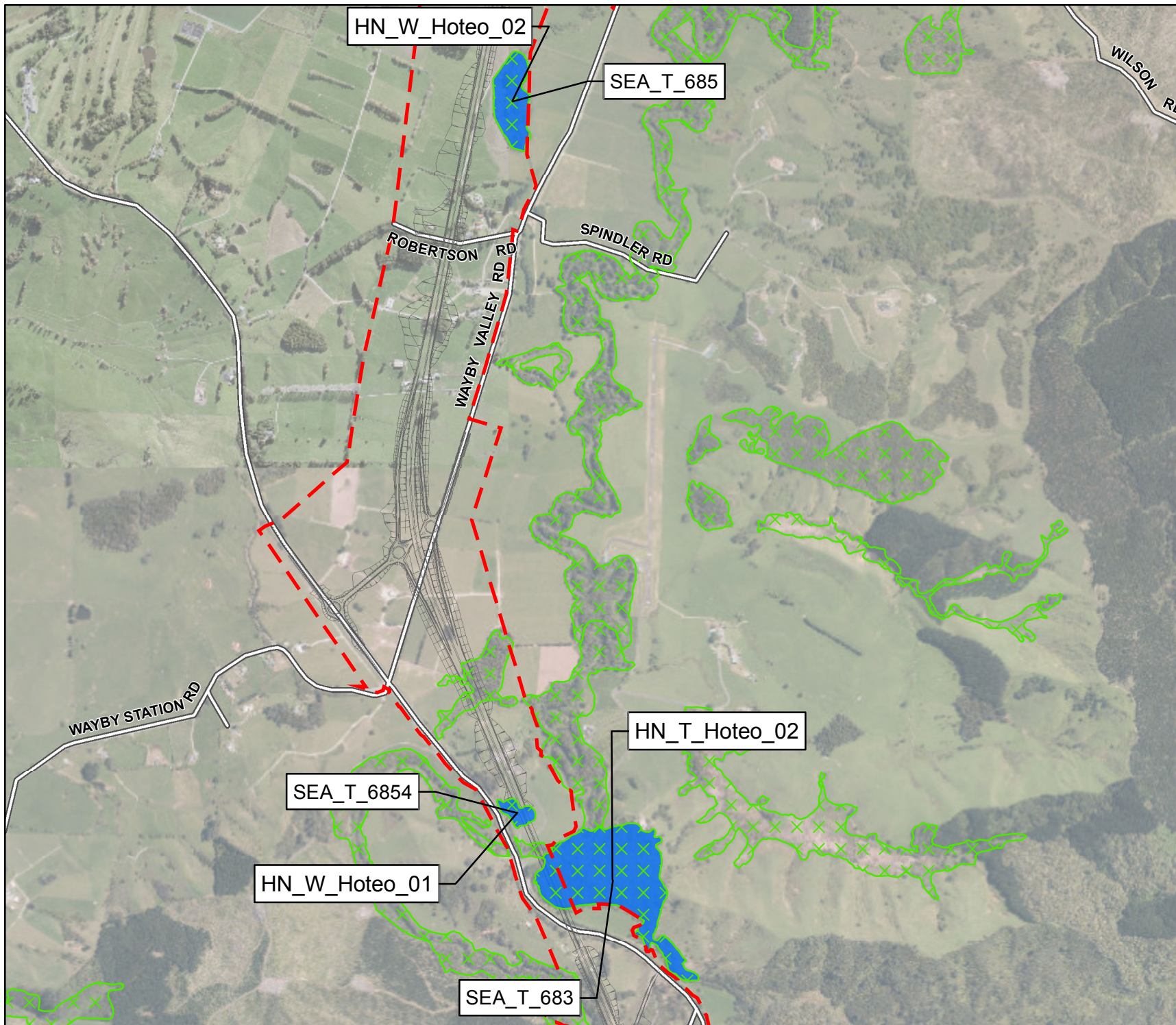
Conditions - Map 19



WARKWORTH TO WELLSFORD

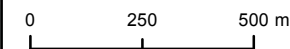
ECOLOGICAL SITES





- Indicative Alignment
- Ecological sites
- - - Designation boundary
- ⊗ Significant ecological area - Terrestrial

Conditions - Map 20



WARKWORTH TO WELLSFORD

ECOLOGICAL SITES

