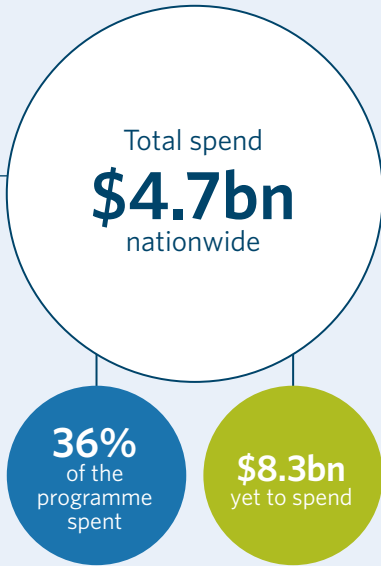


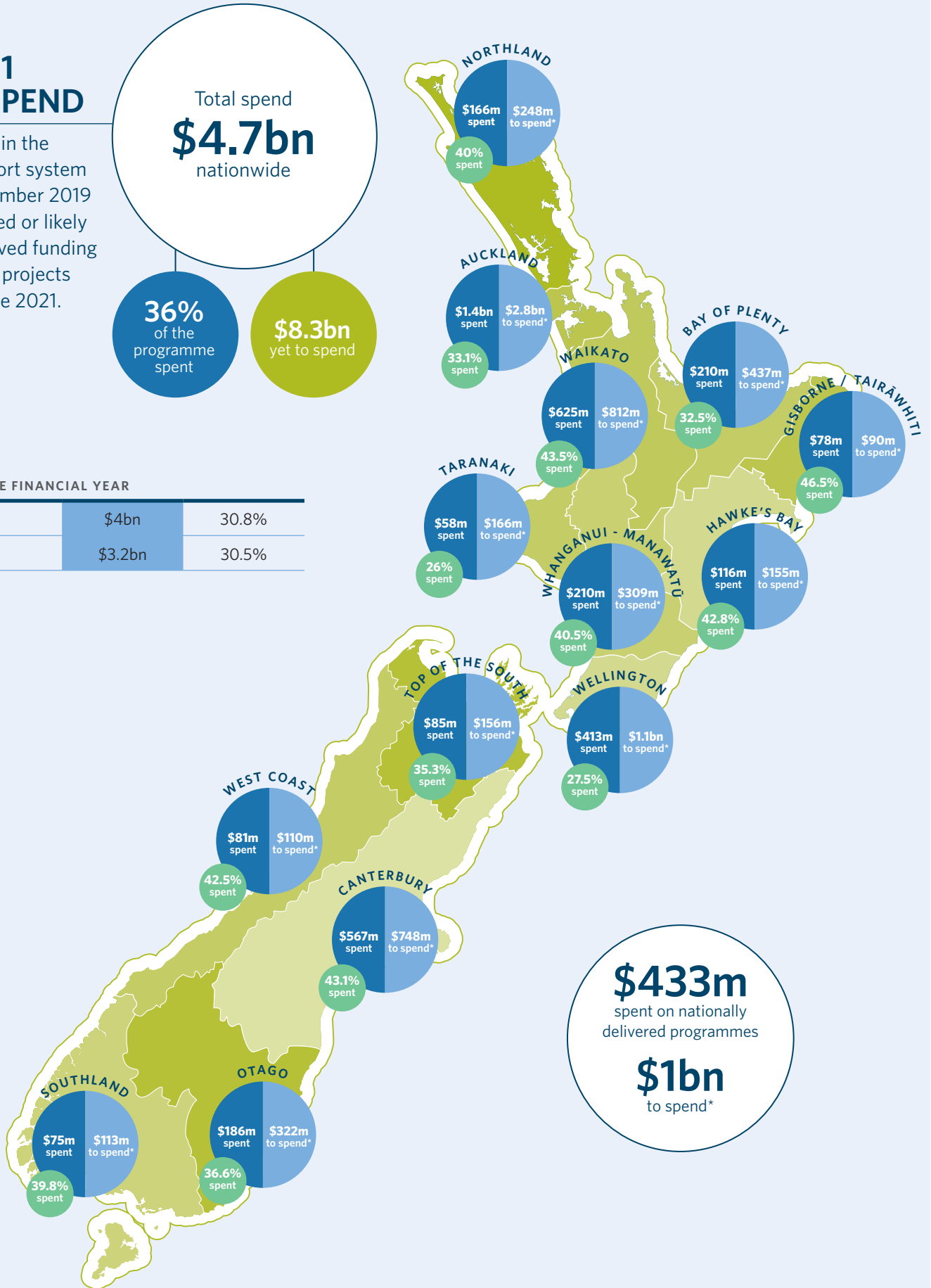
2018-21 NLTP SPEND

Investment in the land transport system to 30 September 2019 and approved or likely to be approved funding for regional projects until 30 June 2021.



SPEND FOR THE FINANCIAL YEAR

Financial Year	Spend	% of Programme
2018/19	\$4bn	30.8%
2015/16	\$3.2bn	30.5%



The spend amount includes National Land Transport Fund (94%) and Approved Organisation (6%) funding.

* for approved or likely to be approved projects