

COVID-19 – implications for land transport

How might the current pandemic impact on the land transport system in New Zealand and each region?

Arataki

Arataki V2 is being prepared now to assess the likely impacts of COVID-19 on the land transport system – to be endorsed by the Board in August



As part of our assessment, we commissioned work to understand the likely socio-economic impacts of COVID-19 on regions and communities

We are using this research to consider the impacts on the land transport system in each region



We will release evidence and insights as they come to hand, to inform RLTPs, the TAIP, etc

Health warning – significant levels of uncertainty. We will monitor and update as things change



Structure of this presentation

- **Research summary** – assessment of the potential impacts of COVID-19 on population and migration flows, including differential impacts across regions and vulnerable communities
- **Initial insights** about implications for the land transport system, based on research report and the Treasury's Slower Recovery Scenario (Scenario 5 – refer last slide for details)
- **Note** that insights for each region, this national presentation and research reports are available here:
<https://www.nzta.govt.nz/planning-and-investment/planning/arataki/>

How will the research and insights be used?

Supporting Waka Kotahi and the sector

- Provide insight into the 'most likely' recovery scenario and the potential impacts
- Identify those parts of the country and system that are likely to be most impacted
- Provide evidence to support where we might 'dial up' or 'dial down' investment in response to the pandemic
- Support update of Arataki to note any shifts resulting from the pandemic
- Provide insight to help shape strategic context in RLTPs
- Help ensure we do not miss opportunities and can be well-informed as we support the recovery effort

What are the likely COVID-19 implications for New Zealand's communities and economy?



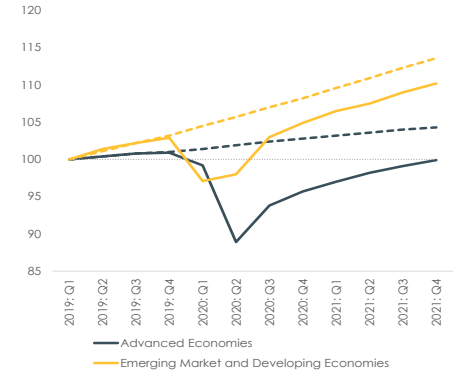
Global impacts and response

- A deep V-shaped global recession over the next 12-18 months is current forecast – but significant downside risk that it will be a deeper ‘U’ shape recession
- World trade estimated to decline 10-20% over 2020/21 and trade growth may not return to its previous rate over long-term due to protectionist policies, reduced airline capacity and supply chain restructuring
- International tourism not likely to recover for at least 18 months beyond what is possible through a Trans-Tasman-Pacific bubble
- Some key trading nations in Asia-Pacific are forecast to recover early and may support an earlier NZ trade recovery
- New Zealand’s recovery will be affected by our relationship and performance relative to Australia – any significant divergence between growth and unemployment across the Tasman may have a major impact on net migration

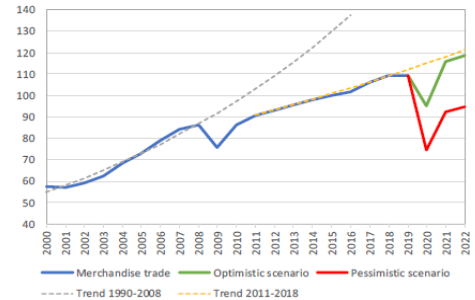


Infometrics

Quarterly World GDP (IMF World Economic Outlook)
2019 Q1=100, dashed lines pre-Covid estimates



World merchandise trade volume (WTO)
2015=100, dashed lines pre GFC and pre-Covid estimates



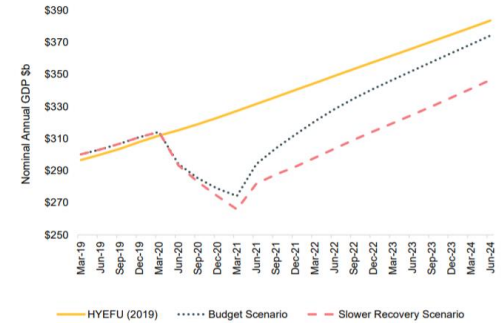
Impact on New Zealand economy

- Immediate significant impacts on output, employment, investment intentions, people & good flows, spending
- Treasury Budget forecast suggests strong hit to GDP and employment in 2020, a recovery in second half of 2021 and a strong rebound in 2022, however ...
- The review suggests the Treasury's slower domestic recovery (scenario 5) is more realistic:
 - Tourism and support industries significantly affected for two years or more
 - Second-round effects of business closures on incomes and investment (some lags evident from GFC)
 - Rise in under-employment and fall in labour force participation
 - Impact on the ability of businesses to attract/retain skills, access capital, invest in R&D and connect with markets & expertise

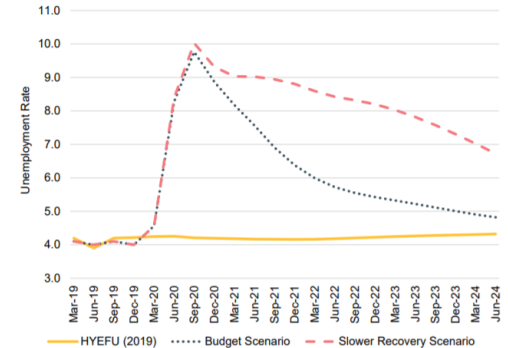


Infometrics

Estimated annual nominal GDP, Budget and Slower Recovery Scenario (Treasury)



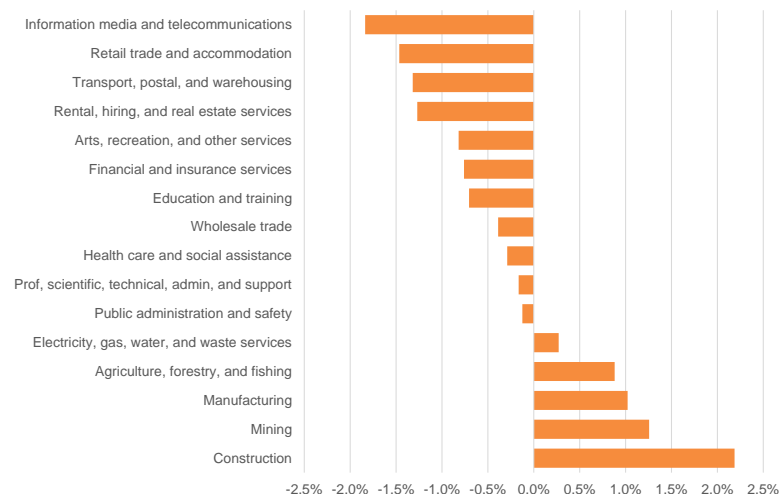
Estimated unemployment rate, Budget and Slower Recovery Scenario (Treasury)



Industry impacts

- Significant short-term negative impact of Covid on key service industries, such as tourism, retail, rental services and transport, while other industries such as agriculture and health are reasonably insulated
- Considerable uncertainty about the medium and long-term impacts. Infometrics modelling of Treasury scenarios, with a focus on a slower recovery scenario, suggests:
 - Tourism and service industry job losses free up labour for other industries over the medium term. Industries likely to benefit most are agriculture, forestry, parts of manufacturing & construction
 - Over the long-term there may be a decline in tourism's contribution to the economy and a slow-down of the decline of manufacturing but not necessarily significant structural change

Employment relative to BAU, 2031, major industries, Slower Recovery Scenario



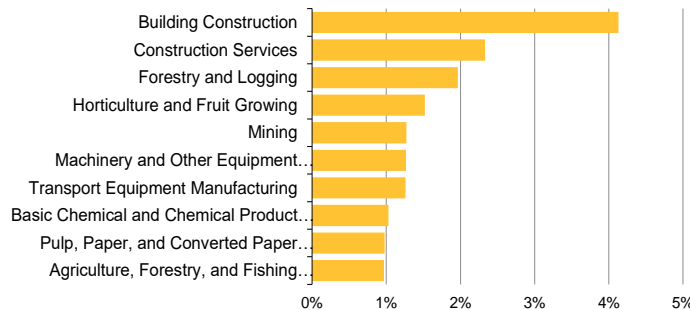
Infometrics

Industry impacts (cont)

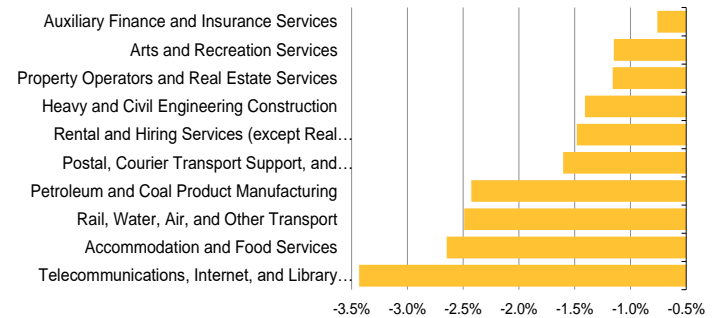
At a more detailed industry level:

- Construction (e.g., building construction, construction services), manufacturing (e.g., machinery & equipment, chemical product, transport equipment), and primary industries (e.g., forestry, horticulture, agriculture support services) are expected to have higher shares of employment relative to BAU
- A range of tourism-related industries (e.g., arts & recreation, accommodation & food services, rental service) are negatively affected, as well as transport services (due to air transport), petroleum & coal manufacturing, civil construction and media
- By 2031, most key transport industries (e.g., meat, forestry, horticulture, manufacturing, building, retailing, logistics) are expected to have recovered close to or be ahead of BAU GDP levels

Employment relative to BAU, 2031, 10 best performing industries Slower Recovery Scenario



Employment relative to BAU, 2031, 10 worst performing industries Slower Recovery Scenario

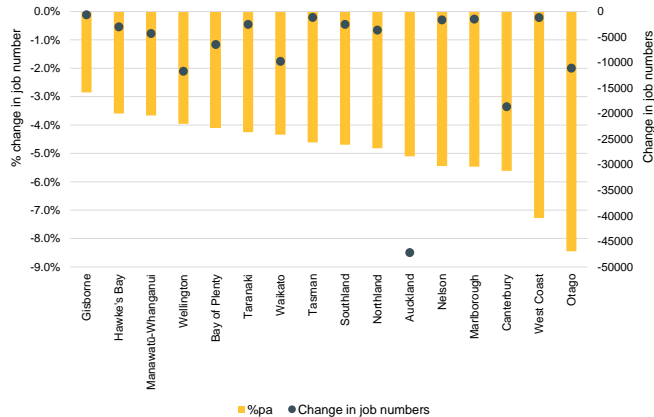


Infometrics

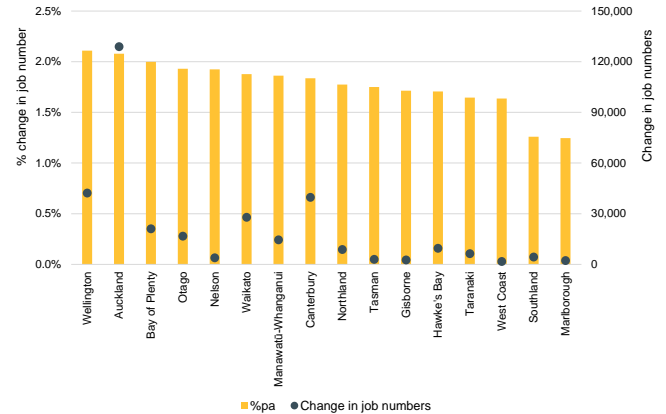
Regional impacts

- Combination of industry and migration effects – those regions with a high proportion of affected service industries and a high proportion of international migrant flows (temporary workers as a proportion of workforce, international students, recent residents) most affected
- Several South Island regions and Auckland face largest immediate declines in job growth, with largest absolute declines in major urban-regions (not unexpectedly)
- Major urban-regions are expected to recover over the long-term as service industries recover

Forecast change in employment by region, 2020-2021, Slower Recovery Scenario



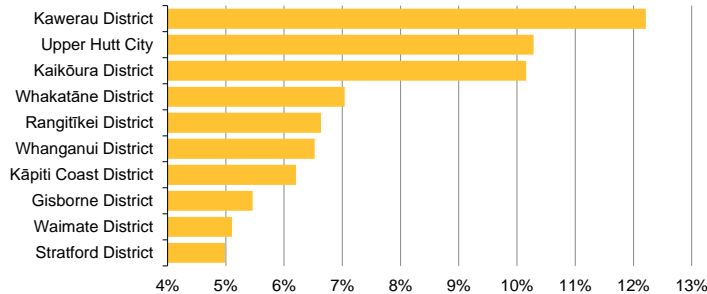
Forecast change in employment by region, 2026-2031, Slower Recovery Scenario



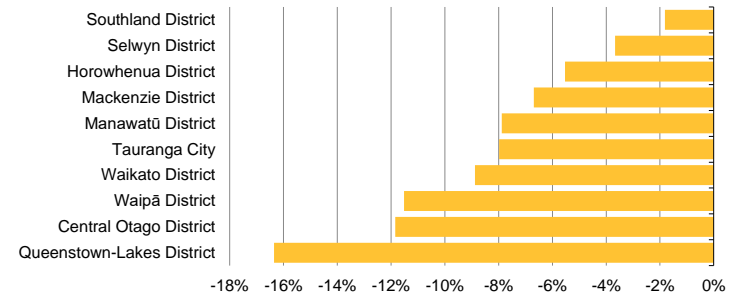
Regional impacts (cont)

- Districts that are primarily reliant on international visitors will be hit the hardest, e.g., Queenstown-Lakes, Mackenzie, Central Otago, and employment & GDP in these areas is expected to remain below pre-Covid trends over the long-term
- Parts of the upper North Island (e.g., Tauranga) are expected to be negatively affected due to slower population growth and spillover effects of downturn in Auckland, e.g., fewer relocations
- Dairy, horticulture and forestry dominated districts will tend to have stronger employment growth over the long-term

Employment relative to BAU, 2031, 10 best performing districts, Slower Recovery Scenario



Employment relative to BAU, 2031, 10 worst performing districts Slower Recovery Scenario



Key urban areas

- **Auckland** – reliance on tourism and gateway role plus large number of international students and high volume of migrant workers means a large short-medium term impact. May be an increase in internal migration as people seek employment opportunities from elsewhere plus a reduction in outward migration as housing market and business relocations cool
- **Hamilton** – more limited exposure to tourism and importance of agriculture, health and government services plus pipeline of infrastructure projects means it will be more insulated than Auckland
- **Tauranga** – affected by reliance on construction and retail, lower skills profile, and less population drift from Auckland. Wider region hit by tourism decline but port and horticulture will provide some cushion
- **Wellington** – shielded from worst due to public sector and major professional services. May be an increase in internal migration due to employment opportunities in government
- **Christchurch** – Southern gateway role and importance of construction activity will mean a medium-term hit. A reversal of recent growth in permanent migrants likely over medium-term
- **Queenstown-Lakes** – will be the hardest hit over long-term due to reliance on international tourism (domestic tourism will not make up for the shortfall), high proportion of migrant workers relative to labour force and reliance on net migration for population growth



Infometrics

Impacts on vulnerable communities

- Migrant workers - significantly affected over short to medium-term (many are in affected industries, many are non-standard workers and have fewer employment protections). Recovery over the long-term will be dependent on the ability & willingness of sufficient numbers of local newly unemployed/underemployed to be redeployed and/or retrain in relevant occupations (e.g., construction, manufacturing, agriculture)
- Young people –more likely to be in casual employment and heavily affected industries (e.g., food services, retail); businesses in other sectors will be reluctant to take on new, younger workers. Likely to be a sharp increase of youth not in employment, education or training (NEETs) in short-medium term and hence affected populations where NEET is already high in Northland, Gisborne, BOP, South Auckland
- Historically, economic shocks have a disproportionately negative impact on Māori and Pasifika (due to both concentration in lower-skilled occupations and self-employment in vulnerable industries). Expected to be a large increase in Māori unemployment (potentially doubling 2020/21), concentrated in Auckland, BOP, Waikato, Canterbury



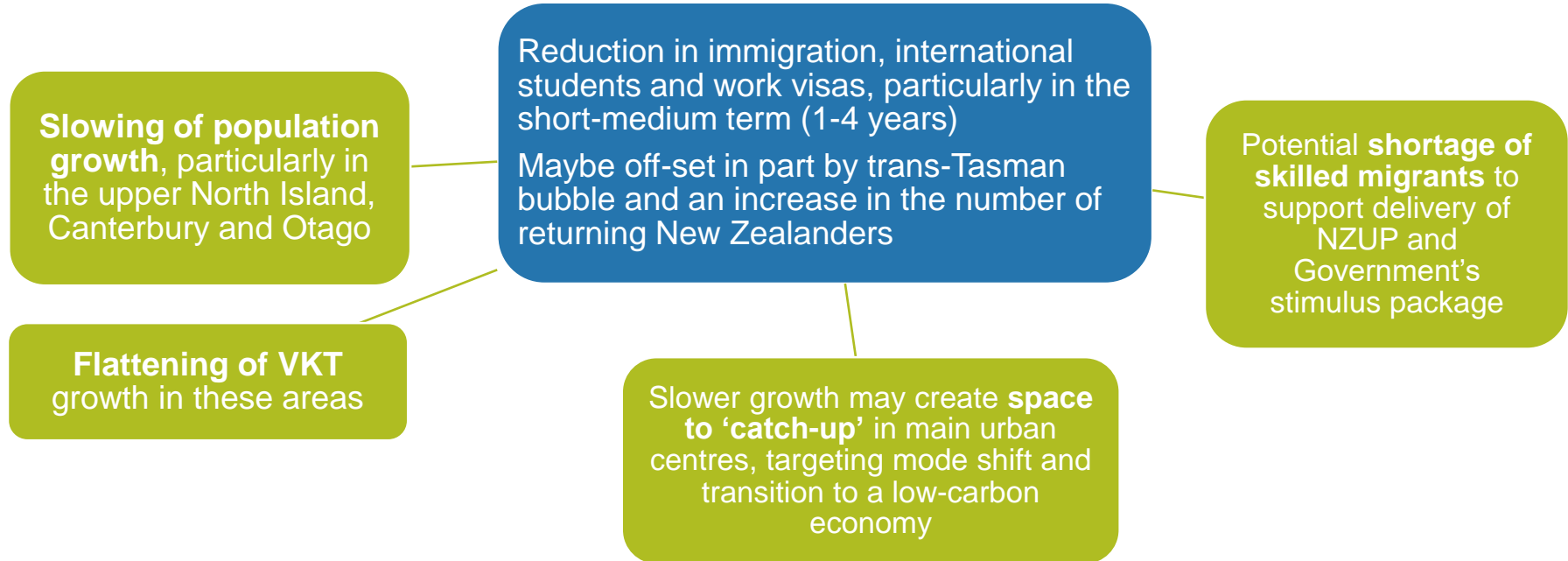
Infometrics

What does this mean for the New Zealand land transport system?



Migration and demographics

If border restrictions remain in place for an extended period (up to 18 months), then....



Tourism

If border restrictions remain in place for an extended period (up to 18 months), then....



Economic impact

If COVID-19 recovery significantly impacts on employment and household incomes, then....

Reduced trips for work and less discretionary travel especially in hardest hit urban areas e.g. Auckland, Tauranga, Canterbury

Demand relatively stable in lower North Island

Reduced freight task due to reduced household consumption and economic slowdown

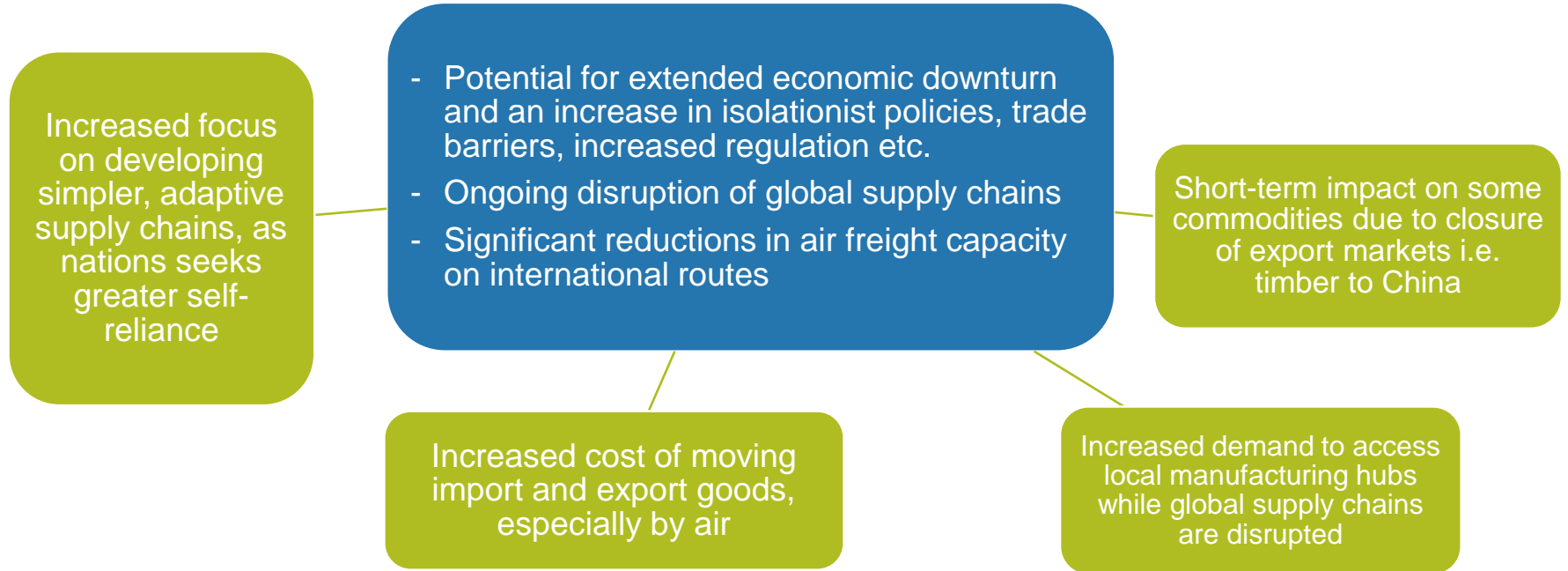
- Almost all industries forecast to decline over 12-18 months, with retail, tourism-related and media industries hardest hit over 5-10 years
- Primary production, government and health sectors least impacted, and key to supporting recovery
- Reduced consumer confidence likely to result in reduced spending
- Stimulus has improved outlook and could potentially lessen impacts

Range of stimulus activities and revenue streams in addition to NTLF e.g. NZUP, PGF, CIP, Kāinga Ora

Ongoing need to support export industries, especially in regions and districts with strong primary sectors

Global impacts

If the global community struggles to effectively manage the pandemic, then....



Vulnerable communities

If COVID-19 causes a significant and sustained economic slowdown, then....

Need to ensure transport services are available and affordable for these groups

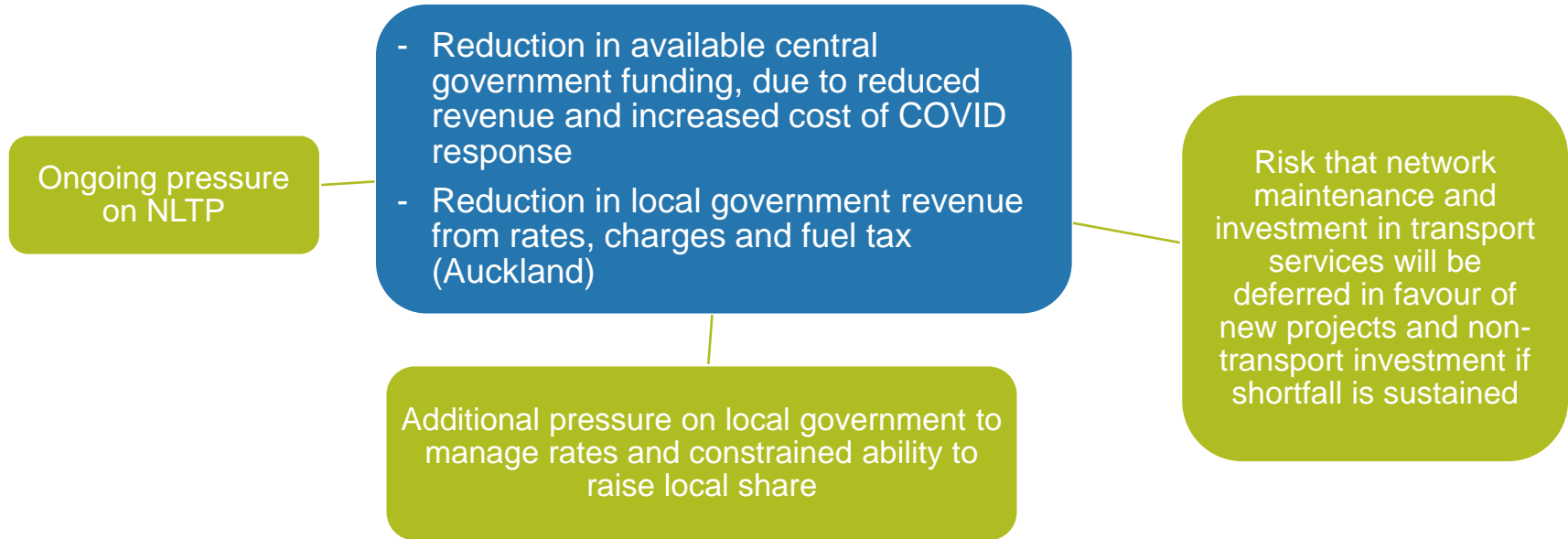
- Greatest impact on casual and part-time workers and those employed in most impacted industries
- Sharp increases in NEETs expected
- Māori, Pasifika and youth are likely to be disproportionately impacted
- Pasifika, Māori, unemployed and rural towns less likely to have internet access

Need for equitable access to education and employment (and other essential services)

Take into account digital divide when designing responses, including non-transport

Funding and financing

If COVID-19 recovery reduces demand for travel, then....



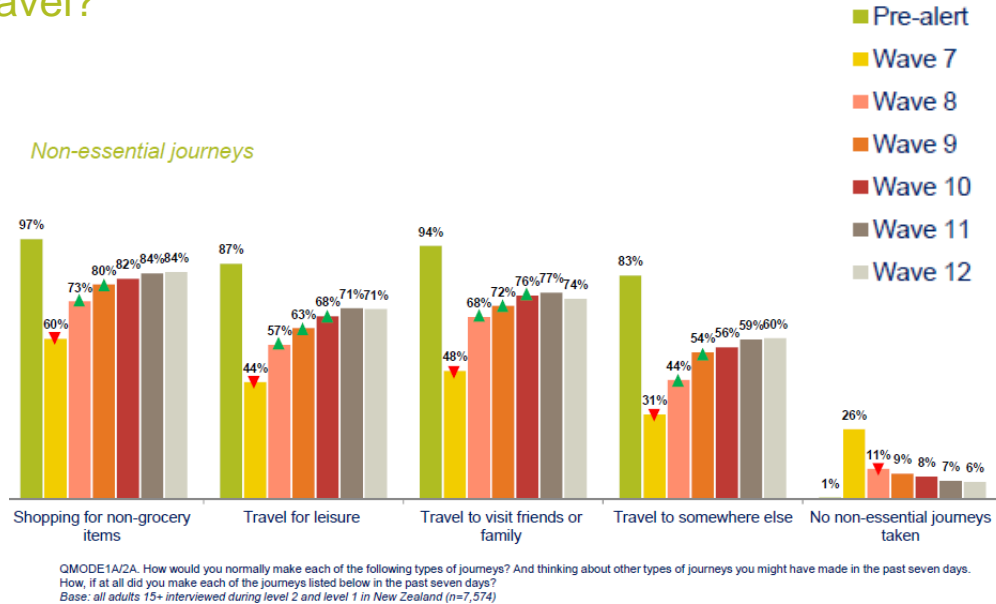
Source: Local Government COVID-19 Response Unit – DIA (14 April 2020) Local Government Sector – COVID-19 Financial Implications

<https://www.dia.govt.nz/Local-Government-COVID-19-Response>

Impacts on customer behaviour

How might COVID-19 impact on how people travel?

- Waka Kotahi surveyed trip patterns and customer attitudes at commencement of Level 4 lock-down
- Results from the first week of Level 1 indicate mode choice is returning to pre-COVID patterns:
 - Travel activity is continuing to return to normal - a small minority are still self isolating in level 1
 - Local journeys continue to increase in level 1
 - Proportion using cars (at least 1/week) has returned to pre-alert levels
 - Use of active modes (at least 1/week) remained relatively constant
 - Use of PT usage continues to recover, chiefly driven by a sharp increase in reported weekly bus usage
- Trip numbers remain significantly lower than pre-alert levels for both work trips and non-essential trips
- Increased working remotely and from home may temper peak demand in the longer-term



Source: Waka Kotahi COVID-19 transport impact research, Fieldwork waves 1-12 weekly core report (30 June May 2020)

- Health warning reminder – significant levels of uncertainty. We will monitor and update as things change.
- Regional summaries and research reports available here:
<https://www.nzta.govt.nz/planning-and-investment/planning/arataki/>
- Feedback welcome –
arataki@nzta.govt.nz



Scenarios

Overview of the Treasury scenarios used in this research

In April 2020 the Treasury produced five national scenarios to model the potential economic impacts of the COVID-19 pandemic.

Waka Kotahi commissioned Infometrics and MartinJenkins to undertake further modelling and analysis of Treasury scenarios 1, 4 & 5 to quantify the potential economic impacts at a regional and territorial authority scale

The key assumptions for each of the three scenarios are below:

Scenario	COVID-19 Alert Level	Other assumptions
Scenario 1: Faster Recovery Scenario	Level 4 – 1 month Level 3 – 1 month Level 1/2 – 10 months	Borders assumed closed to foreign visitors for up to 12 months. World annual average real GDP growth is lower than HYEPU by 6% in calendar 2020.
Scenario 4: Steeper Decline Scenario	Level 4 – 3 months Level 3 – 3 months Level 1/2 – 6 months	May be interpreted as a number of shorter periods at Level 4 and/or Level 3 linked by periods at Level 1 and 2.
Scenario 5: Slower Recovery Scenario	As in Scenario One	World annual average real GDP growth is lower than Scenario One by 3% in calendar2020 and 4% in 2021

Source: Treasury Report; Economic Scenarios (13 April 2020) <https://treasury.govt.nz/sites/default/files/2020-04/c19-4265378-t2020-973-economic-scenarios-v3.pdf>

The **Slower Recovery Scenario** (Scenario 5) is considered to be the **most likely** due to continuing high levels of uncertainty regarding global efforts to manage the COVID-19 pandemic (and the duration and scale of the resulting economic downturn).