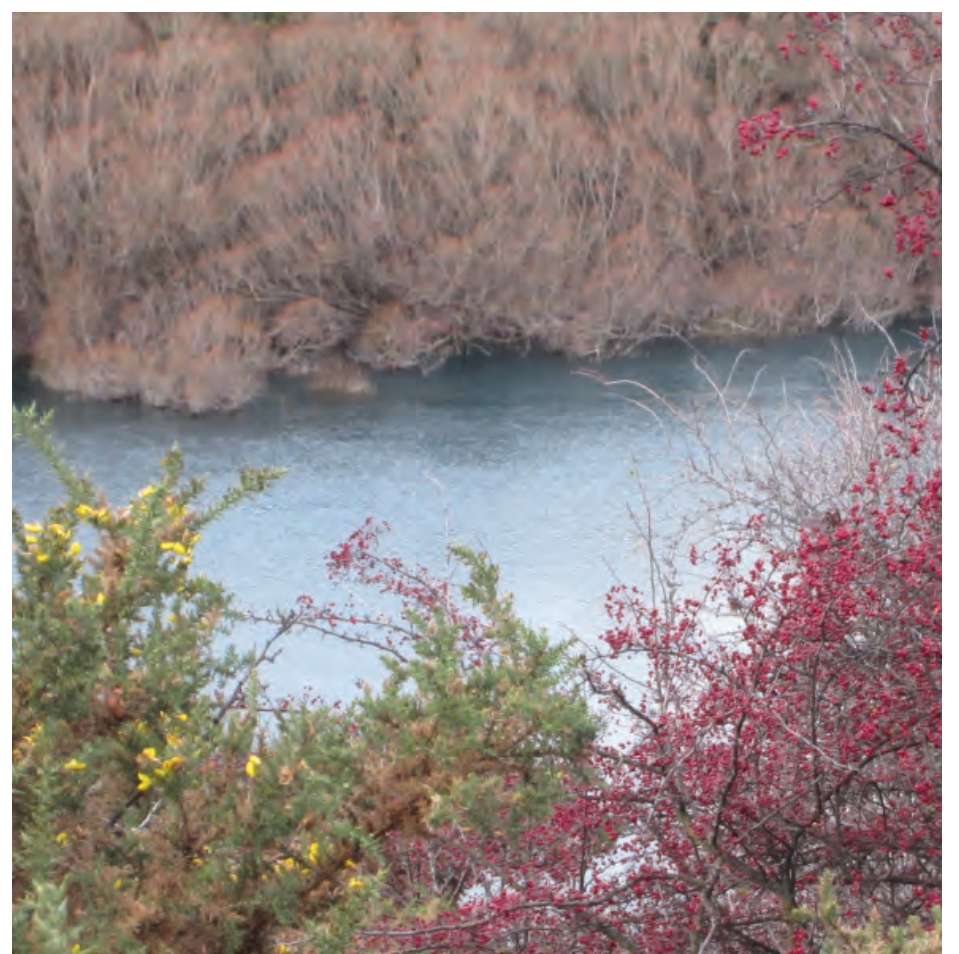


6

7. Features of the new bridge site



Heritage and archaeological features

There are features of historic significance in the area, such as the Grade I listed Kawarau Falls Bridge/Dam (1926), the site of the old Frankton Mill, also referred to as the Brunswick Flour Mill. The existing bridge opened in 1926 on a dam structure built to manage water levels in the Kawarau River to help recover gold from the river bed. After two years the project was abandoned as back-flow from the confluence of the Shotover River, a short distance downstream, cancelled out the reduced flow from Lake Wakatipu.

Natural features and landscapes

The proposed Kawarau Falls Bridge site is located within a highly valued landscape. The Kawarau River is classed as an Outstanding Natural Feature in the QLDC's Regional Plan. Peninsula Hill and the Remarkables are parts of an Outstanding Natural Landscape that extends from the banks of the Kawarau to the south.

Ecology and water quality

Water flowing through the Kawarau River has a high degree of visual clarity and is free of weeds. The river is home to trout, salmon, eels, and the rare koaro.

Nearby communities

The Frankton community is located to the north of the bridge. The Kelvin Heights community is located to the south of the bridge.

Linkages

There are existing cycling and pedestrian trails on either side of the Kawarau River that currently link with the pedestrian walkway that crosses the old historic bridge. This part of the river is used by commercial jet boats and other recreational users.

Trees

The river banks around the proposed Kawarau Falls Bridge site are home to mostly exotic trees. This includes many willows, which are considered noxious vegetation.