

# **SH16 St Lukes / Great North Road Upgrade Project Overview for the Community Liaison Group**

**Meeting 1 on 17 December 2013  
Western Springs Garden Community  
Centre**

**956 Great North Road, Western Springs**

# Agenda

## Welcome and introductions

- Community Liaison Group (CLG) purpose
- Western Ring Route Project context and overview
- SH16 St Lukes / Great North Road Interchange Upgrade
- CLG and other communication
- Discussion

# Introducing the team

- Ronnie Salunga: NZ Transport Agency Project Manager
- Jala Shekho: NZ Transport Agency Communications Advisor
- Howard Marshall: Auckland Transport Project Manager
- Sharon Hunter: Auckland Transport Communications Manager
- Helen McLean: Aurecon Senior Planner
- Martyn Francis: Aurecon Senior Highway Engineer
- Dave Hughes: Aurecon Civil Engineer

# Community Liaison Groups (CLG)

- The community is an important part of our project
- CLG mechanism established by the consent conditions
- Waterview, Causeway and Te Atatu CLGs already active

Purpose is to: *“ Provide a regular forum through which information about the project can be provided to the community and an opportunity for concerns or issues to be raised”*

# The Western Ring Route

- Improved and more reliable journey times
- Direct motorway access to the airport
- An alternative route to SH1 around Auckland
- Co-ordinated with Auckland Transport and public transport improvements



# Western Ring Route

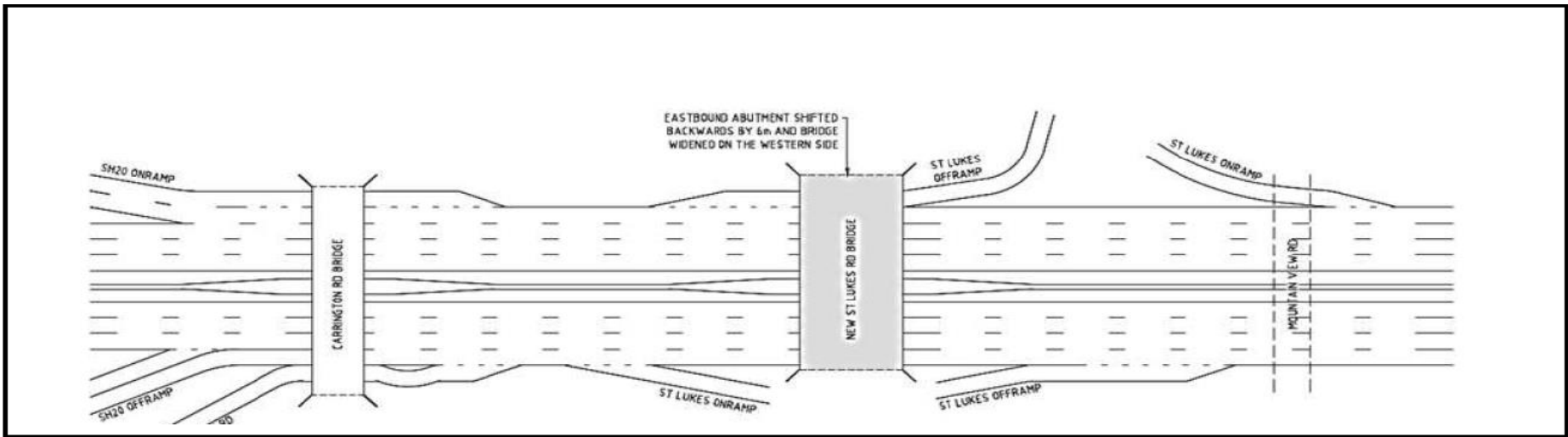


Note: Location of dashed boundary lines are indicative only.

# Project Overview – Limit of works



# Project Overview – Comparison of Existing and Proposed Upgrade





# Project Overview – site photos



Basalt at St Lukes EB off ramp



Shared use path



St Lukes Bridge Abutment



St Lukes Bridge Interchange



Meola Creek Culverts



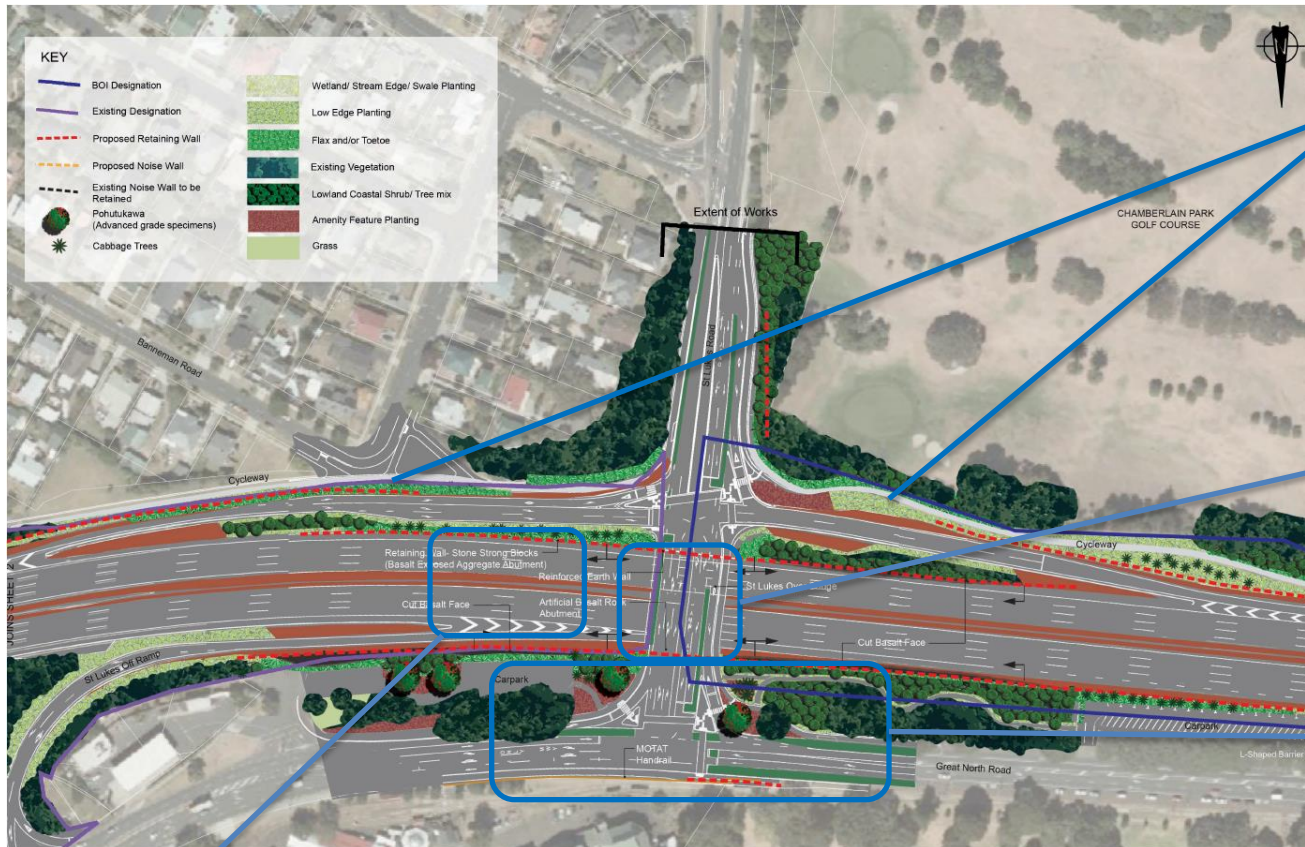
West of St Lukes Bridge

# Project Overview – Proposed Upgrades



New noise walls

# Project Overview – Proposed Upgrades



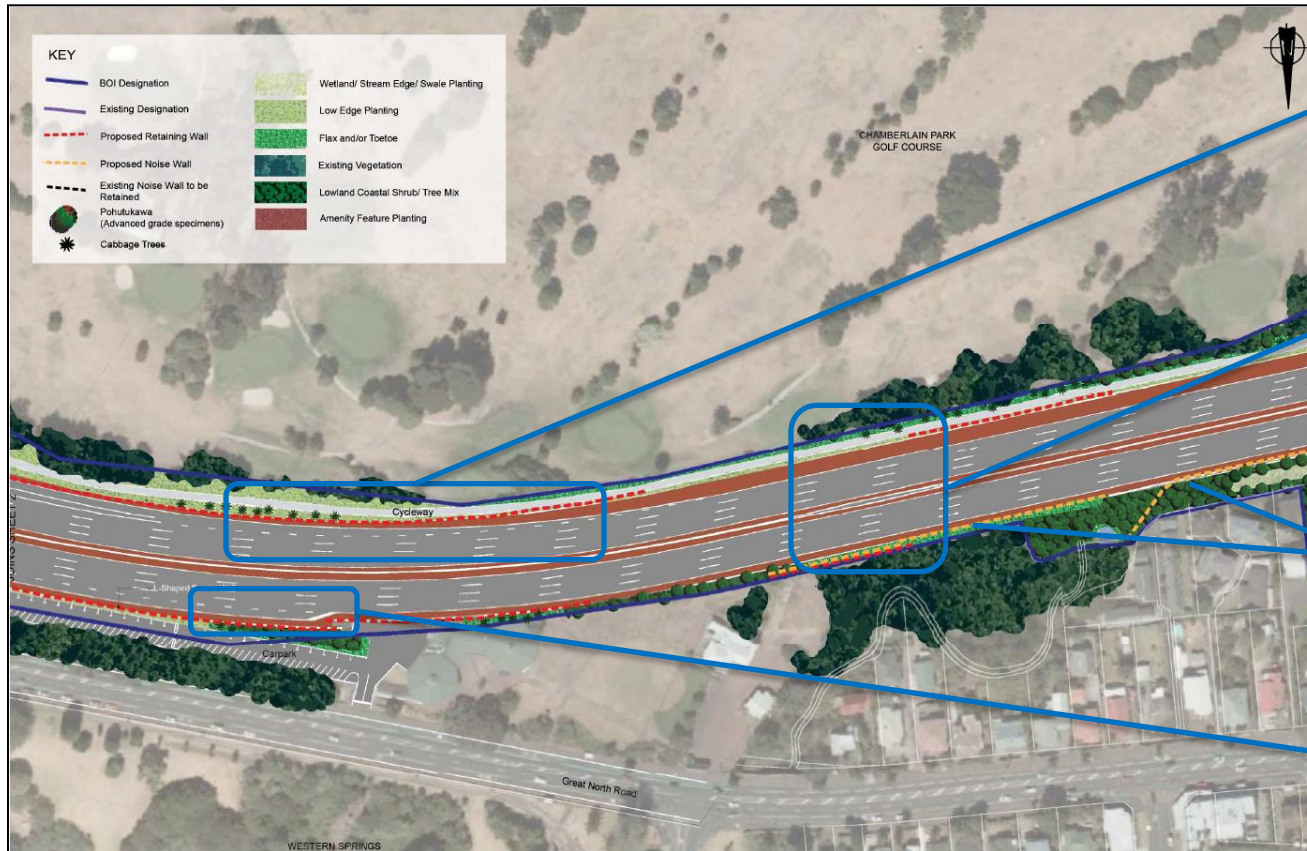
Realigned North Western Cycle Path

St Lukes Over Bridge - Three lanes NB & SB with improved cycle/pedestrian facilities

Great North Road and St Lukes Road Intersection Upgrade

Four lanes in both directions

# Project Overview – Proposed Upgrades



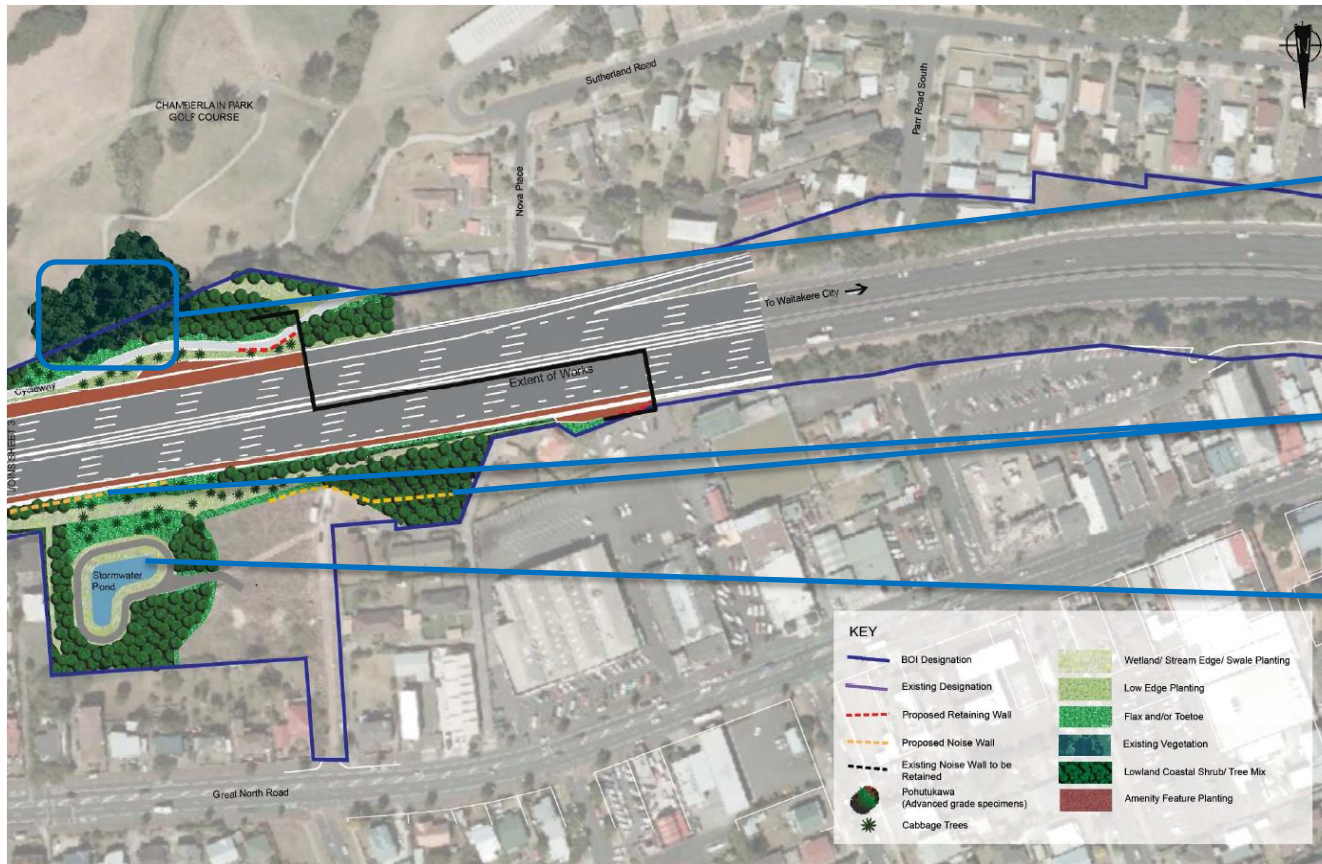
Merge from St Lukes WB on ramp

Four lanes in both directions with future proofing for five lanes

Noise walls

Diverge to St Lukes EB off ramp

# Project Overview – Proposed Upgrades



Chamberlain Park Golf Bridge and retained cycleway

Noise walls

Stormwater management pond

# Project Overview – Urban Design

- Urban design based on the Urban and Landscaping Design Framework established as part of the Western Ring Route
- Provision made in tender documents for on-going discussions on the incorporation of cultural influences such as
  - Art work
  - Printed messages on structures
  - Use of traditional waterway names
  - Species to be used in proposed landscaping

# Project Overview – Urban Design



St Lukes Road Over Bridge Visual

# Project Overview – Urban Design



Situation before



Proposed development

## St Lukes and Great North Road Intersection Visual



# Project Overview – Urban Design



Situation before



MOTAT handrails



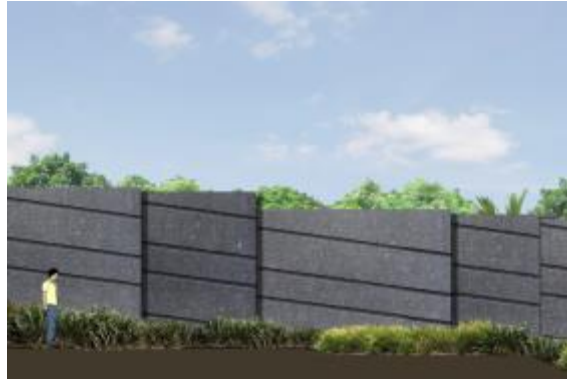
Proposed development (After five years)

## St Lukes and Great North Road Intersection Visual

# Project Overview – Urban Design



L-Shaped Barrier (Sand Blast)



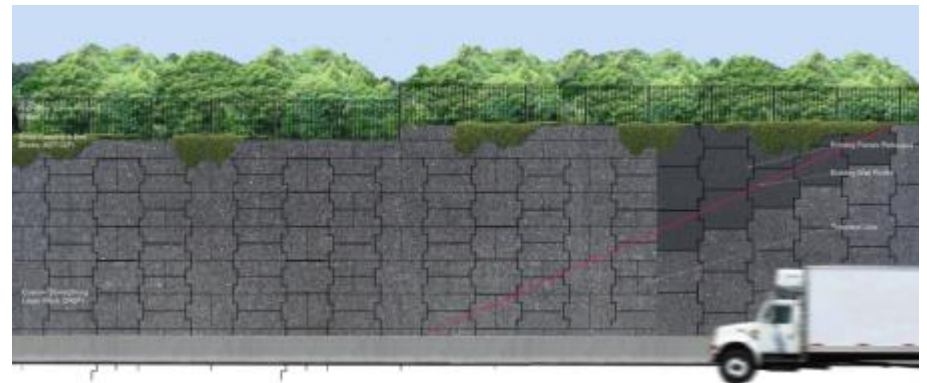
Noise Walls



Artificial Rock Bridge Abutment



Chamberlain Park Golf Bridge



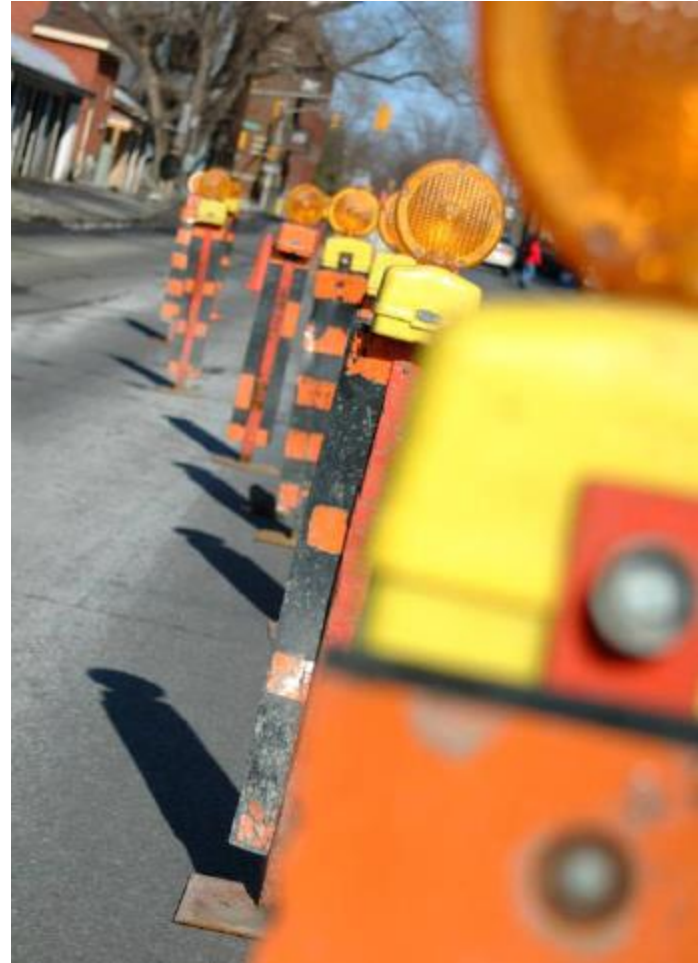
Southern Abutment with Retaining Wall Extension





# Construction Management

- During peak hour, all motorway lanes and pedestrian/cycleway will be kept open
- Temporary lane closures off-peak
- Speed restrictions for worker and motorist safety
- Noise and vibration mitigation measures
- Minimal effects during peak hour



# Project timeframe

- Awarding of contract in late December 2013
- Site Establishment will begin in mid January 2014
- Construction will begin in February 2014
- SH16 works to be completed by December 2016 to coincide with the opening of the Waterview Tunnels in March 2017

# More information

- Community Liaison Group (CLG) meetings
- Regular newsletter project updates
- Visit [www.nzta.govt.nz/projects/wrr](http://www.nzta.govt.nz/projects/wrr)
  - Presentation available on this website
- Visit [www.nzta.govt.nz/stayconnected](http://www.nzta.govt.nz/stayconnected)
- Communications and Stakeholder Manager – to be appointed
- Next meeting will be Monday 17 February 2014

# Questions and discussion

