

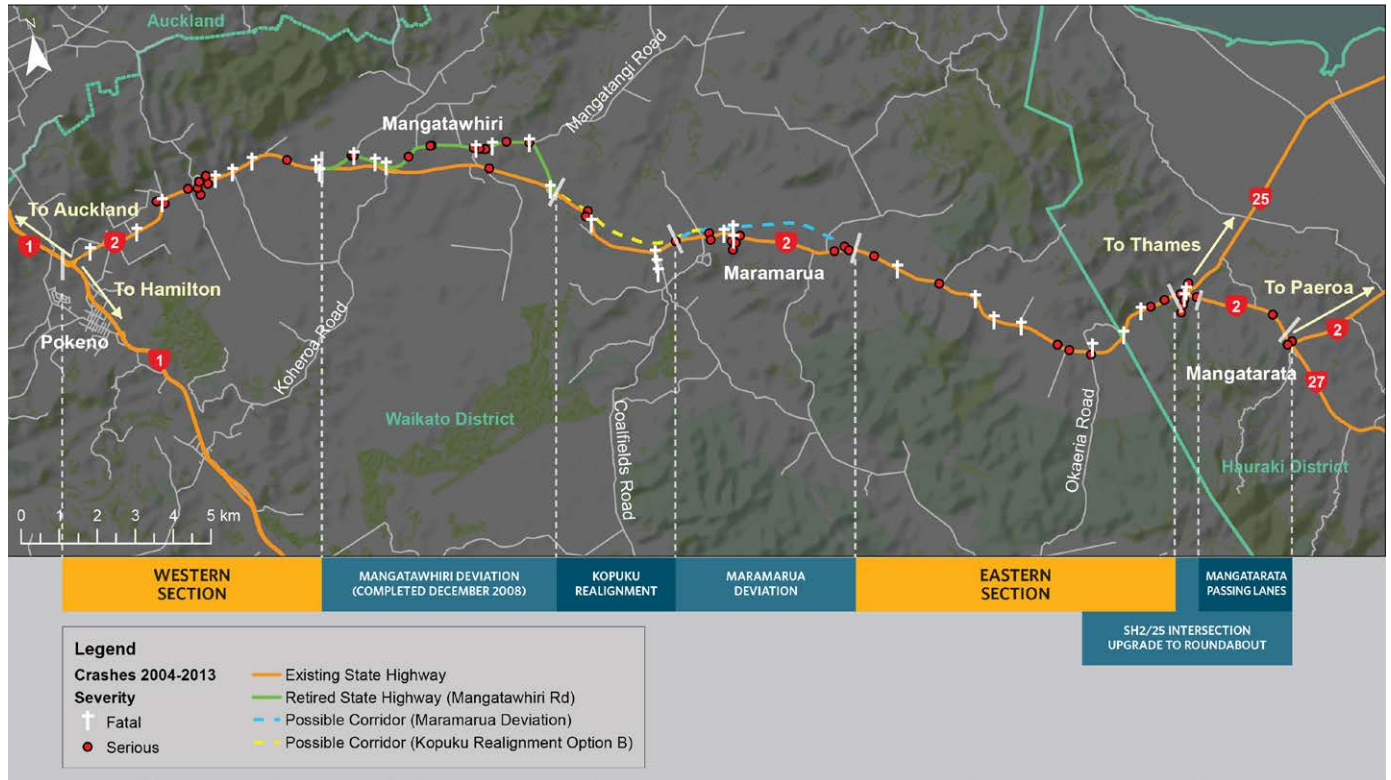
2

Safe System Corridor Project

SH2 Maramarua Highway, Western and Eastern sections

PROJECT UPDATE

March 2014



The stretch of State Highway 2 between Pokeno to Mangatarata – historically called the Maramarua Highway – has traditionally had a poor safety performance.

Work has been done to improve safety on the corridor and the NZ Transport Agency plans to do more.

In December 2011 the speed limit was reduced from 100km/h to 90km/h for much of the length as an interim measure to improve safety. We are now investigating a Safe System Corridor Project beginning with the most western and eastern sections of the route (see map above). The project aims to save lives and lessen injuries by creating a more forgiving environment.

In the last 10 years there have been 214 crashes on the Western and Eastern sections combined, 15 of these were fatal and 16 involved serious injury. Most of the fatal and serious crashes were caused by vehicles crossing the centreline or running off the road.

The project will identify improvements to reduce the number of head-on and run-off-road crashes, and make intersections safer. This work is in line with the Government’s Safer Journeys strategy.

Access to the highway will be made safer and the capacity of the road to carry peak holiday traffic volumes improved. Driver education measures will be introduced where possible including a gateway treatment at the western end to highlight to drivers that they are no longer on a motorway.

THE KEY OBJECTIVES FOR THIS SAFE SYSTEM PROJECT ARE TO:

- Enhance the safety and wellbeing for the local community and residents who live and travel along this route
- Acknowledge that people can make mistakes while driving, are vulnerable in crashes and need a more forgiving environment
- Reduce the number of fatal and serious injury road crashes, particularly head-on, run-off road, and intersection crashes
- Maintain SH2 as a route for over-dimension and over-load heavy vehicle travel
- Develop and implement affordable solutions

The Transport Agency has commissioned two consultancy firms to investigate and design safety improvements for the Western and Eastern sections of the Maramarua Highway.

- **Western section:** 7.4km long and starts just east of the intersection with SH1 at Pokeno and ends at the Mangatawhiri Stream Bridge. Investigation by Beca.
- **Eastern section:** 9.5km long and starts east of Monument Road, and ends at the SH2/25 intersection near Mangatarata. Investigation by Bloxam Burnett & Olliver.

The project teams have just begun their work to investigate options that will provide a safer journey on SH2. During this initial investigation phase the project teams will seek feedback from stakeholders and the people who live, work and travel along SH2.

As more detailed options are developed we will seek direct feedback from affected residents and landowners.

A public Open Day will be held towards the end of May/early June 2014.



Busy highway: On average 13,000 vehicles use SH2 around Maramarua each day, and holiday peaks climb to 24,000.



The current T-intersection at SH2/25

OTHER MARAMARUA HIGHWAY NEWS

SH2/25 intersection: The project is now in design stage, with the preferred option a two-lane roundabout. The start date for construction is likely to be August 2014.

Kopuku Alignment: In investigation stage.

Maramarua Deviation: In design stage.

Mangatarata Passing Lanes: Investigation nearing completion.



If you have any questions about this project, please contact either:

Section A (Western): **Rob Mason** – Beca
Ph (09) 300 9238 Email: rob.mason@beca.com

Section E (Eastern): **Ben Inger** – Bloxam Burnett & Olliver
Ph (07) 838 0144 Email: binger@bbo.co.nz

A project website www.nzta.govt.nz/projects/maramaruahighway is being developed covering this project and others along the Maramarua Highway. You can also receive project information sheets like this via email by contacting simon.brandon@nzta.govt.nz