



# Longburn Cycleway

An off-road cycle and pedestrian path alongside a busy state highway corridor linking the Longburn community and commercial area with the rest of Palmerston North.

**Benefits:** This high speed corridor connects the growing area of Longburn to a local business district, a secondary school and a primary school. This facility will increase transport options for Longburn residents resulting in an increase in cycle journeys to work and school and reduced crash risk.

Total estimated construction cost: **\$0.9 million**

Urban Cycleways Fund share \$0.3 million

Local share \$0.3 million

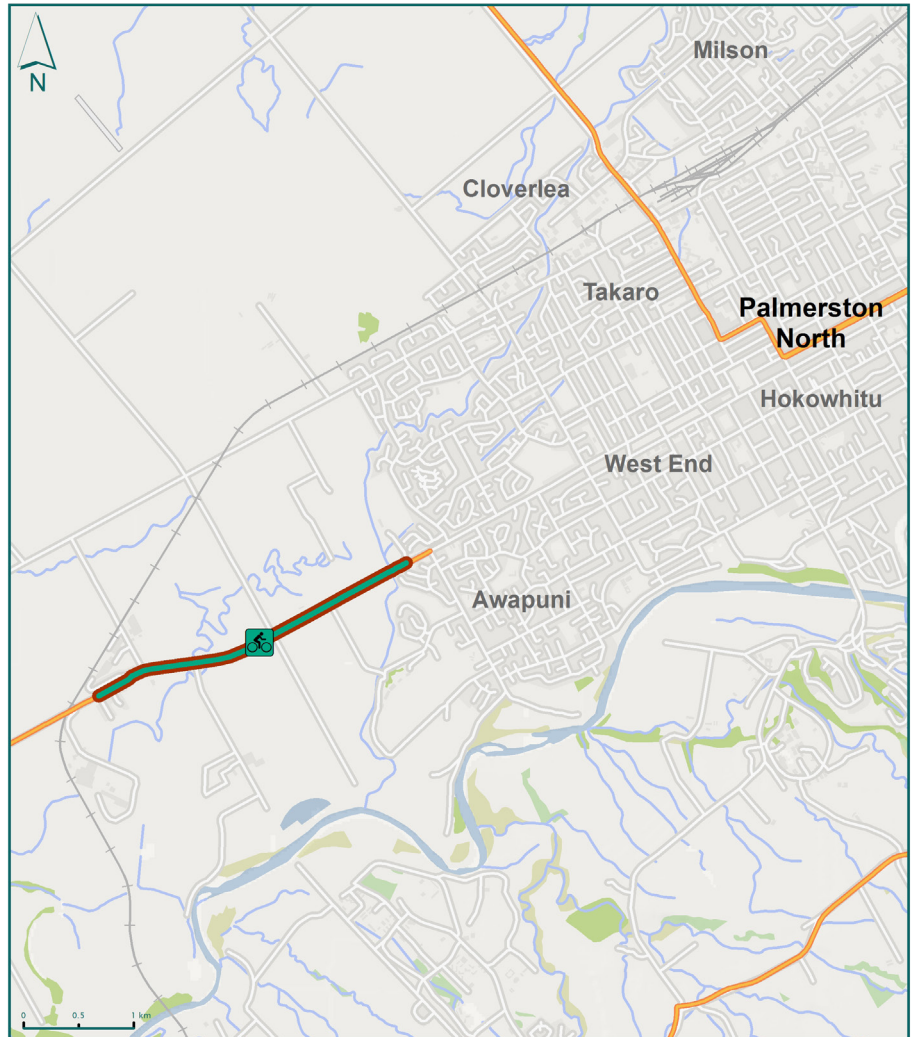
NLTF \$0.3 million

Target start date:

**February 2015**

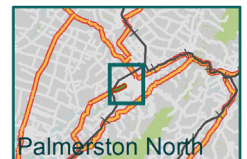
Target completion date:

**June 2015**



Longburn Cycleway

 Urban Cycleway Funded Project



For more information, visit our website

[www.nzta.govt.nz/planning/process/walking-cycling.html](http://www.nzta.govt.nz/planning/process/walking-cycling.html)