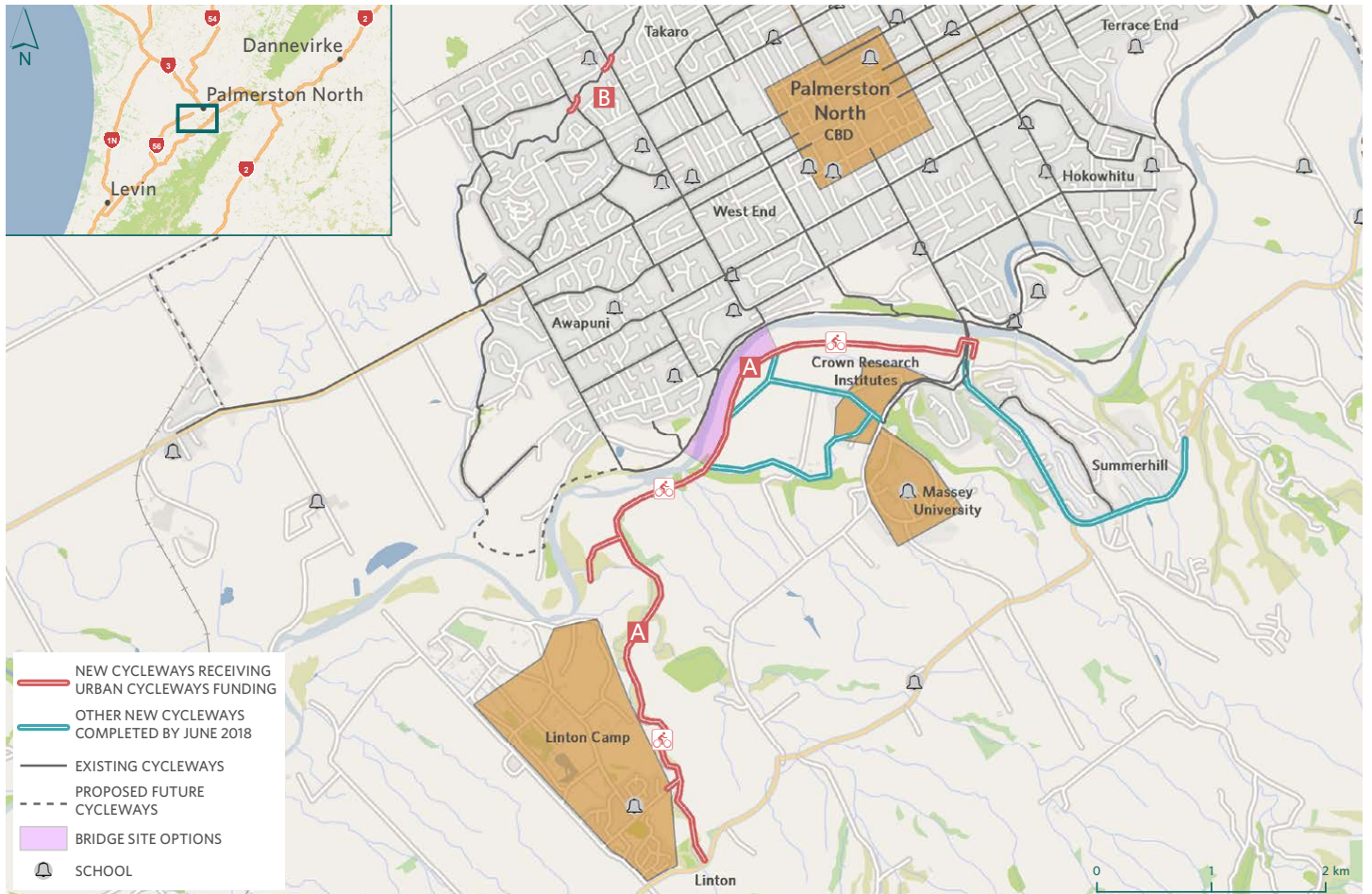




Palmerston North



Cycleways refers to both on and off-road facilities

Cycling in Palmerston North contributes to improving transport options, providing a more efficient and integrated transport network, improving health, economic and social outcomes and city liveability.

Due to its flat terrain and existing on-road cycle network, Palmerston North has one of the highest rates of commuter cycling in New Zealand. With a regional goal of being 'the best place to ride a bike,' significant investment is planned over the next three years to complete key connections on the cycle network.

The Urban Cycleways Fund will accelerate a new pedestrian and cycle bridge that links the main residential areas and CBD with Linton Military Camp, the Crown Research Institutes and Massey University, south of the Manawatu River. It will also contribute to two underpasses, connecting the Mangaone Shared Path.

Wider investment is also planned for an off-road shared path between Palmerston North and Feilding, Summer Hill Drive safety improvements, Park Road cycle improvements and the completion of on-road cycle lanes on Main Street East and Main Street West. In partnership with the Police and Sport Manawatu, any infrastructure improvements will be supported by the Bikes in Schools programme.

A. MANAWATU RIVER BRIDGE AND SHARED PATH

This project will provide a new 6.6km off-road cycle path and bridge over the Manawatu River, linking Linton Military Camp, the Crown Research Institutes and Massey University to the CBD and main residential areas. Supported jointly by the council, Powerco, Massey University and Linton Military Camp, this will connect the major employment, educational and residential areas with the existing cycle network.

Benefits: This new bridge and shared path will provide a safer and direct cycling route option for residents, over 6,000 workers and over 7,000 students to access work and educational centres south of the river. The cycling facilities will help to encourage people to choose to cycle, with sections of the route providing safer access away from the high speed traffic along the State Highway. This project is expected to attract over 1,000 people each day.

Construction is anticipated to begin in mid-2016 and be significantly completed by mid-2018.

TOTAL ESTIMATED PROJECT COST	URBAN CYCLEWAYS FUND SHARE	NATIONAL LAND TRANSPORT FUND SHARE ESTIMATED	LOCAL SHARE ESTIMATED
\$9.6 million	\$3 million	\$3.2 million	\$3.4 million

B. MANGAONE UNDERPASSES

Two underpasses will complete the Mangaone shared path network, providing access to schools and residential areas west of the city.

Benefits: These underpasses will provide an alternative and safer route for cyclists that avoids two major road crossings along the Mangaone shared path network. This will improve the connectivity of the route, and encourage more people to choose to cycle to schools (with around 1,400 students) and suburbs along this route. These facilities are expected to attract around 200 people each day.

Construction is anticipated to begin in February 2016 and be completed by May 2016.

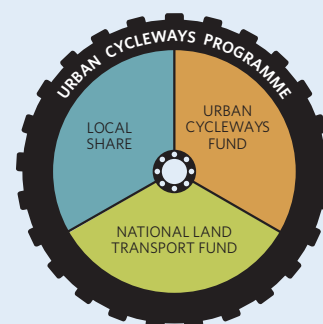
TOTAL ESTIMATED PROJECT COST	URBAN CYCLEWAYS FUND SHARE	NATIONAL LAND TRANSPORT FUND SHARE ESTIMATED	LOCAL SHARE ESTIMATED
\$600,000	\$200,000	\$200,000	\$200,000

URBAN CYCLEWAYS PROGRAMME

The Urban Cycleways Programme, comprising shared investment from the Urban Cycleways Fund, the National Land Transport Fund and local councils, enables key, high-value urban cycling projects to get underway around the country over the next three years, while improving cycle safety and supporting more connected cycle networks.



For more information, visit our website
www.nzta.govt.nz/UCP



Working together to make urban cycling a safer and more attractive transport choice



POWERCO



New Zealand Government