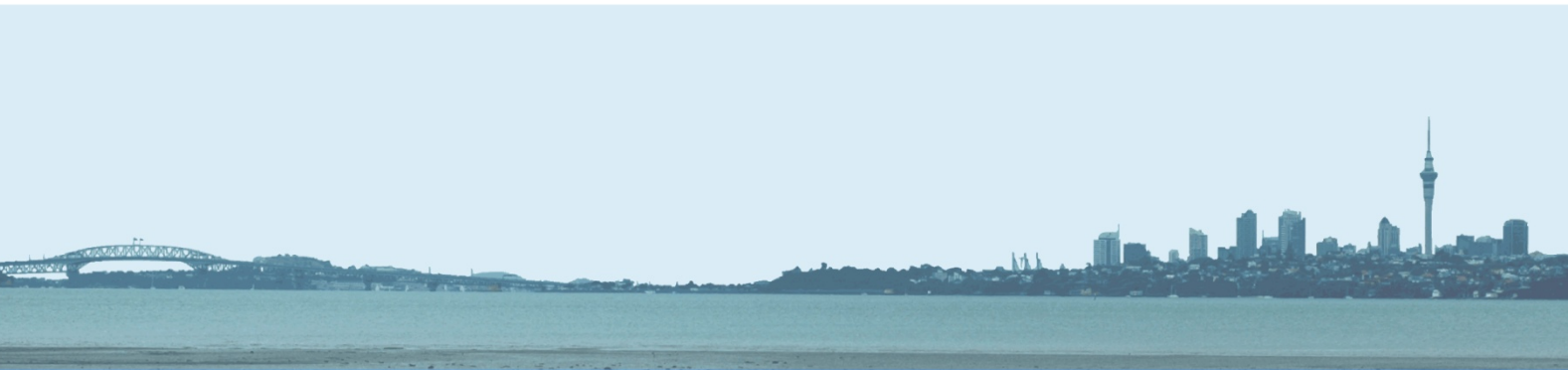


CAUSEWAY ALLIANCE
working for our **thriving** city



SH16 CAUSEWAY UPGRADE PROJECT



Monthly Environmental Report
August 2013

Document history and status

Revision	Date issued	Written By	Reviewed by	Approved by	Revision Status
A	17.09.2013	K Stevens	E Collins / S Kane / B Dunbar		For REVIEW
B	18.09.13	K Stevens	M Evans		FOR APPROVAL
C	19.09.13	K Stevens	M Evans	M Evans	FINAL
D	14.10.13	K Stevens		K Stevens	FINAL with revised App D

Distribution of copies

Revision	Purpose	Issued to
A	For review	E Collins/B Dunbar/S Kane
B	For approval/release	Mark Evans
C	FINAL	Auckland Council
D	FINAL reissued	Auckland Council

Printed:	16/10/2013 09:16
Last saved:	16/10/2013 09:16
File name:	K:\EN Environment\EN51 Construction\04 Council Reporting\Monthly Report\2013 06 Report\June 2013 Causeway Upgrade Project Monthly Environmental ReportECverA.docx
Author:	Kevin Stevens
Environmental Manager:	Michael Cassidy
Name of organisation:	Causeway Alliance
Name of project:	SH16 Causeway Upgrade Project
Document version:	Revision D

Contents

1.0	INTRODUCTION	7
1.1	PURPOSE OF THE REPORT	7
2.0	OVERVIEW of ACTIVITIES UNDERTAKEN	7
2.1	Environmental	7
2.2	Communications and Stakeholder Management	7
2.3	Key Stakeholder Milestones	7
2.4	Construction	8
3.0	MEETINGS, INSPECTIONS & EVENTS	8
4.0	ENVIRONMENTAL MONITORING	8
4.1	EARTHWORKS COMPLIANCE	8
4.2	CONSTRUCTION NOISE & VIBRATION	8
4.3	AIR QUALITY	9
4.4	CONTAMINATED SOIL	9
4.5	EROSION AND SEDIMENT CONTROL	9
4.6	ARCHAEOLOGICAL	9
4.7	COASTAL MONITORING	9
4.8	MARINE MONITORING	9
4.9	ECOLOGICAL	10
5.0	CORRESPONDENCE ON CONSENT CONDITIONS AND PLANS	10
6.0	WORKS PROPOSED FOR SEPTEMBER 2013	10

Appendix A: SH16 Causeway Alliance Construction Zone Plan

Appendix B: SH16 Causeway Alliance 3 Month Construction Programme

Appendix C: SH16 Causeway Summary Construction Programme

Appendix D: SH16 Causeway Imported and Exported Material Summary

1.0 INTRODUCTION

1.1 PURPOSE OF THE REPORT

To provide Auckland Council with a monthly overview of construction progress and compliance activity on the SH16 Causeway Upgrade project.

This report describes and details activities during the month of August 2013.

2.0 OVERVIEW of ACTIVITIES UNDERTAKEN

2.1 Environmental

Regular contact is continuing with Auckland Council compliance team.

Review of draft Urban Design and Landscape Plan by Auckland Council and Auckland Transport staff.

2.2 Communications and Stakeholder Management

The next quarterly Community Liaison Group (CLG) meeting was held on 13 August 2013 at Pringle Park Bowling Club in Te Atatu and attended by 30 members. The presentation and minutes are available on the project web page:

<http://www.nzta.govt.nz/network/projects/project.html?ID=208>

A further meeting was held on 26 August 2013 with CLG members to identify potential environmental mitigation opportunities which could be considered as an additional 'legacy' of the project. These ideas will be considered by the Project Alliance Board and a response will be provided to the next CLG meeting in November. The CLG Environmental Mitigation meeting minutes are also on the project's web page.

2.3 Key Stakeholder Milestones

- Produced fortnightly Causeway News project updates to stakeholders, project neighbours and wider community
- Working Liaison Group meeting held on 21 August
- Presented to Auckland Council staff at Auckland Central Library on the NZ Transport Agency's Western Ring Route projects
- Met with Forest & Bird members to review floating bird roosts proposed south of Causeway Bridge.
- Presented to Bus and Coach Association on bus lane closures and options to mitigate bus delays
- Responses received to the STEM assessment from Te Atatu Pony Club and local schools on the reuse of hardwood timber for projects (non-heritage projects).
- Met with Te Atatu primary school principals to progress environmental legacy project concepts

Three calls to the project's freephone number were received during the period. Positive feedback and no complaints were received from residents, local or regional stakeholders.

2.4 Construction

- Alwyn Ave - no progress on earthworks for creating access to Whau Bridge (south-west side) due to wet weather.
- Whau River bridge (north-east side) - working platform for ground improvements and vibro cement column installation underway
- Rosebank Domain – vegetation clearing continuing ahead of powerline relocation
- Zone 1 Causeway (North Traherne Island) – continue installing drainage layer, wick drains, ground monitoring instrumentation, relocation of shell bank and works in advance of coastal marine occupation
- South Traherne Island – clearing of vegetation alongside shared path
- Great North Road Interchange (GNRI) to SH16 westbound on-ramp – mangrove clearing and earthworks continuing ahead of coastal marine occupation.
- Trial embankment – removal of concrete block in coastal marine area.

3.0 MEETINGS, INSPECTIONS & EVENTS

1 August 2013 - Earthworks Compliance Inspection (Auckland Council / Causeway Alliance)

6 August 2013 - Coastal works Compliance (Auckland Council / Causeway Alliance)

15 August 2013 - Earthworks Compliance Inspection (Auckland Council / Causeway Alliance)

29 August 2013 - Earthworks Compliance Inspection (Auckland Council / Causeway Alliance)

4.0 ENVIRONMENTAL MONITORING

4.1 EARTHWORKS COMPLIANCE

Earthworks Compliance Inspections completed by Auckland Council officers on the 1, 15 and 29 August 2013 all recorded compliance scores of 1 (Full Compliance).

4.2 CONSTRUCTION NOISE & VIBRATION

No Site Specific Noise Management Plans were submitted or approved in August.

No noise monitoring was undertaken during August.

4.3 AIR QUALITY

No air quality complaints or issues were received during the period.

Causeway Alliance Daily Site Reports did not indicate any air quality issues.

4.4 CONTAMINATED SOIL

An import/export fill strategy has been finalised, implemented and will be submitted to Council in September. Tests on exported material were completed during the period at GNRI, Causeway and West (Whau River), resulting in classifications of managed soil, contaminated soil and clean fill being identified.

A summary of imported material sources and exported material disposal locations, classifications and quantities at various site locations during August is included in Appendix D.

4.5 EROSION AND SEDIMENT CONTROL

CESCP No. 11 for Southern Traherne Island was approved 22 August.

Two amendments to CESCP No. 8 for Whau Bridge access were approved on 2 and 22 August.

CESCP No. 10 is for the Rosebank Domain access road and relates to works which require a new resource consent application, and this has yet to be submitted to Council.

4.6 ARCHAEOLOGICAL

Inspections of archaeological sites and regular monitoring were completed during the period at the GNRI westbound ramp site (adjacent to Oakley Creek). This included middens and a concrete building and related works from a Waitemata County Council quarry (dating back to 1920/1930s).

4.7 COASTAL MONITORING

A coastal monitoring inspection was completed by Auckland Council on 6 August and recorded a compliance score of 1 (Full Compliance).

4.8 MARINE MONITORING

No marine monitoring was undertaken during the period.

The six monthly construction phase marine monitoring programme will commence during the 2013/2014 summer.

Five intertidal beach profile baseline section surveys were completed on the north side of the Causeway.

Two intertidal profile baseline section surveys were completed on the south side of the Rosebank Domain access road.

The existing channel profiles in the Oakley Inlet, opposite side slope protection works, are being surveyed.

4.9 ECOLOGICAL

Ongoing inspection for Significant and Valued vegetation was undertaken during the period at GNRI, Traherne Island North and South, between Whau River bridge (north-eastern corner) and Patiki off-ramp and at the Rosebank Domain.

There was accidental clearance and disturbance of a small area of vegetation on the western side of south Traherne Island, beyond the designation boundary, during the site clearance operation. A letter, investigation and detailed plan reporting the extent of this incident and proposed mitigation will be provided in September.

Pre-clearance inspections for reptiles/lizards were undertaken at the Rosebank Domain site during the period.

Monthly assessment of avian roosting locations was undertaken in Zone 3 (Harbourview-Orangihina).

Planning continues for the installation of two temporary bird roost sites (floating pontoons) south of Causeway Bridge.

A draft Animal Pest Management Plan is prepared and is being reviewed prior to submission to Council. This covers the pest control required by BOI Condition A.6.

5.0 CORRESPONDENCE ON CONSENT CONDITIONS AND PLANS

Letter dated 12 August from Council approving the lighting plan for the Te Atatu Road Contractor's Yard.

Letter dated 29 August from Council approving the layout plan submitted for Construction Yard 2 in Rosebank Domain.

6.0 WORKS PROPOSED FOR SEPTEMBER 2013

Refer Appendix B for three Month Construction Programme and Appendix C for SH16 Causeway Upgrade Project Summary Programme.

Zone 1 Causeway - continue installing the working platform, drainage blanket, wick drains, coffer dam and reclamation in the coastal area on north Traherne Island. Establish access and working platform on south Traherne Island.

Zone 2 / Zone 3 – Access track from Alwyn Ave to Whau River Bridge (south-west) to commence after lizard relocation and environmental controls installed. Continue installing ground improvements at abutment on the north- east side of Whau River Bridge.

Zone 5 - Installing the coffer dam, rock revetment on Oakley Creek bends and earthworks to widen the embankment in the vicinity of Oakley Creek at Great North Road Interchange Area.

The environmental focus for September will continue to be on inspections prior to and during vegetation removal and ground clearance to ensure ecological and archaeological stand over requirements are met. The establishment and monitoring of sediment and erosion controls will also continue.

Appendix A: SH16 Causeway Alliance Construction Zone Plan

Appendix B: SH16 Causeway Alliance 3 Month Construction Programme

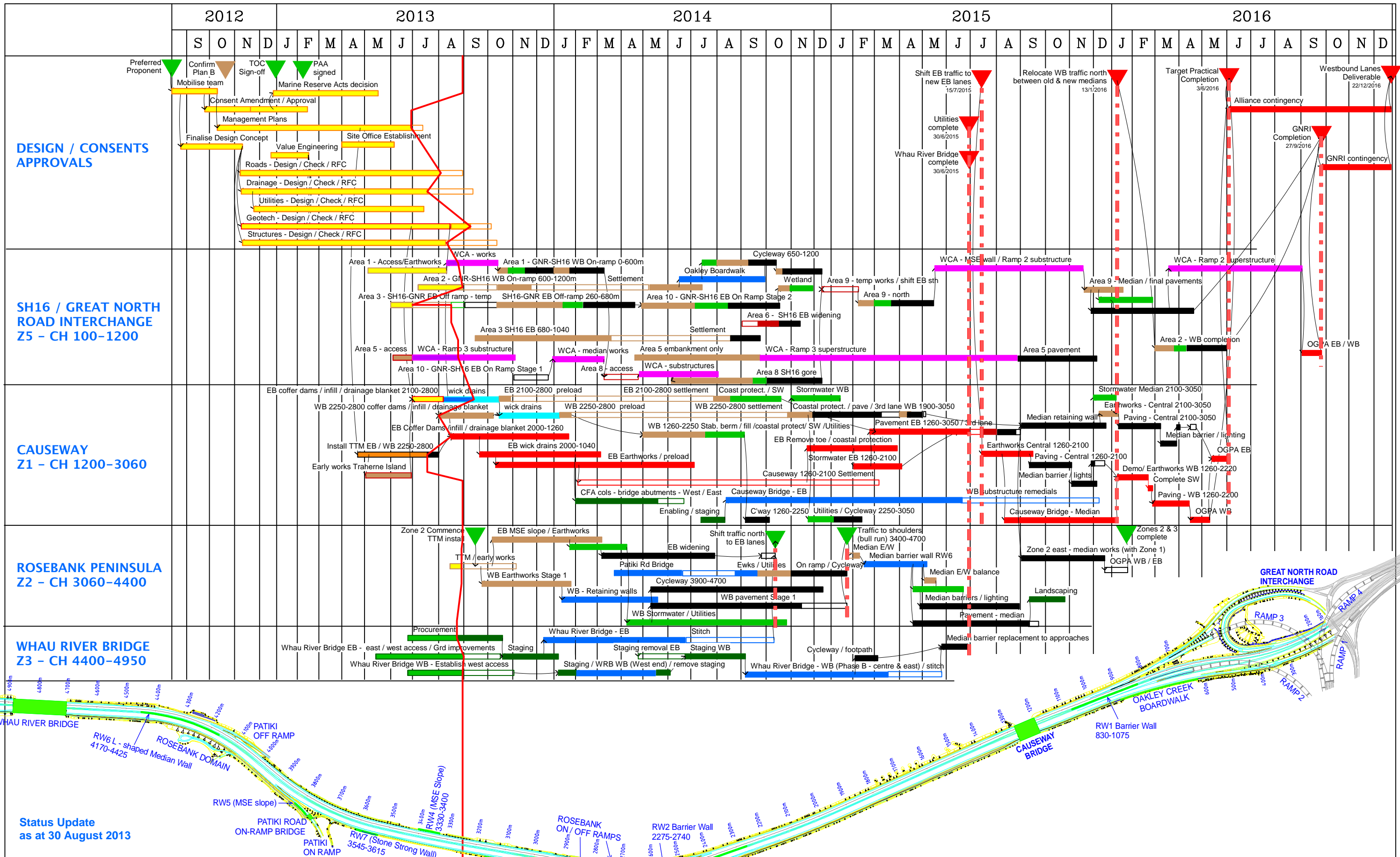
SH16 CAUSEWAY ALLIANCE 90 DAY "WORK STARTS" PLAN



This 90-Day plan is to be read in conjunction with the Project Summary Programme.

AREA	90-DAY MILESTONES														... AND BEYOND	
	01-Jul-13	08-Jul-13	15-Jul-13	22-Jul-13	29-Jul-13	05-Aug-13	12-Aug-13	19-Aug-13	26-Aug-13	02-Sep-13	09-Sep-13	16-Sep-13	23-Sep-13	30-Sep-13	07-Oct-13	14-Oct-13
Project Wide	. All Management Plans Complete - 1/7 . Road Barriers IFC Complete . KRAs Implemented - 22/7 . Commence Steel Barrier Installation - 15/7 . Winter Marine Monitoring Commences - 1/7					. Pavements Design IFC - 23/8 . SW Drainage Design Approved - 29/8 . Substantial Design Completion - 28/8 . IFC for Area West GI's . Close Hopetoun St Office - 30/8 . Winter Marine Monitoring Completed - 31/8 . Stability Berm Remedial Methodology Application - 16/9									. 100% All Cost Codes FCTC	
GNRI	. Enabling works complete for Area 3 handover - 5/7					. Divert Share Path, GNR WB to Causeway Br - 5/8 . Enabling works complete for Area 1 handover - 12/8 . Commence earthworks to Area 2 - 12/9									. Commence temp EB off ramp 23/9 . Commence Area 3 EB widening 7/10	
ZONE 1	. Traherne Is Instrumentation Installed - 20/7					. Commence fingers / coffer dams - 19/8 . 1200-2100 Zone 1 GI Package IFC - 15/8 . Wick Drain Installation Commences - 29/7 . Remove existing trial embankment - 5/8 . Rosebank culvert embankment designation approved - 26/9 . Commence Embankment Fill 16/9									. Complete Wick Drains to Traherne Island 30/9	
AREA WEST	. North East Access to WRB Complete - 8/7					. Yard 2 Established - 12/8 . Commence works to Raceway Channel - 12/8 . TTM to EB shoulder WRB Complete - 7/8 . Raceway Powerlines relocated - 29/7 . Alwyn Ave Access: WRB SW Complete - 30/8 . South Eastern Access established WRB - 10/9 . Rosebank contaminated fill consents approved - 26/9									. Consent for Raceway RW Approved - 1/10 . WRB south western GI complete - 4/10	
STRUCTURES	. WRB Seismic & Push-over Analysis Resolved - 5/7 . Temp Staging Procurement Finalised - 15/07 . Reinforcing procurement completed - 19/07 . Alwyn Ave Demolition Complete - 22/07					. Commence Vibro Concrete Columns NE Whau - 5/8 . VCCs NE Whau Complete - 2/09 . Commence Temp Staging WRB - 6/9 . WRB IFCs 26/8										

Appendix C: SH16 Causeway Summary Construction Programme



Status Update
as at 30 August 2013



SH16 CAUSEWAY SUMMARY PROGRAMME

KEY

Design / preconstruction	Drainage / Utilities
Temporary Works etc	Structures
Earthworks	Pavement / barriers
Critical	WCA access

H	Zone 2 / Zone 3 revised	30/8
G	Revision G / Design 85%	5/7
F	Revision F	26/4
A	Draft 2	
No	Revision	App Date



Date	5/12/12	Job No	
Drawn	CWB		426
Programme No		Rev No	
101		H	

Appendix D: SH16 Causeway Imported and Exported Material Summary

