

One year on...

Since work started building the Rangiriri Section in January 2013 our contractor Fletcher Construction and its partners have:

- Established the site office at the end of Murphy Street in Rangiriri
- About 100 staff are working on the project, clocking up more than 107,000 staff hours in this first year
- Placed 8000 tonnes of aggregate in the stone columns at Glen Murray and the battle trench for ground improvements
- Completed 11 Te Kauwhata bridge piles, ranging in depths from 28-35 metres. 10 piles remaining for Rangiriri bridge will be constructed early this year
- Completed the first of three traffic switches at Rangiriri intersection, resulting in the Glen Murray diversion relocating north 300metres
- Relocated all services around Rangiriri Interchange, including replacing 110kv powerlines with three heavy-strain towers and nine new concrete poles



Project earthworks

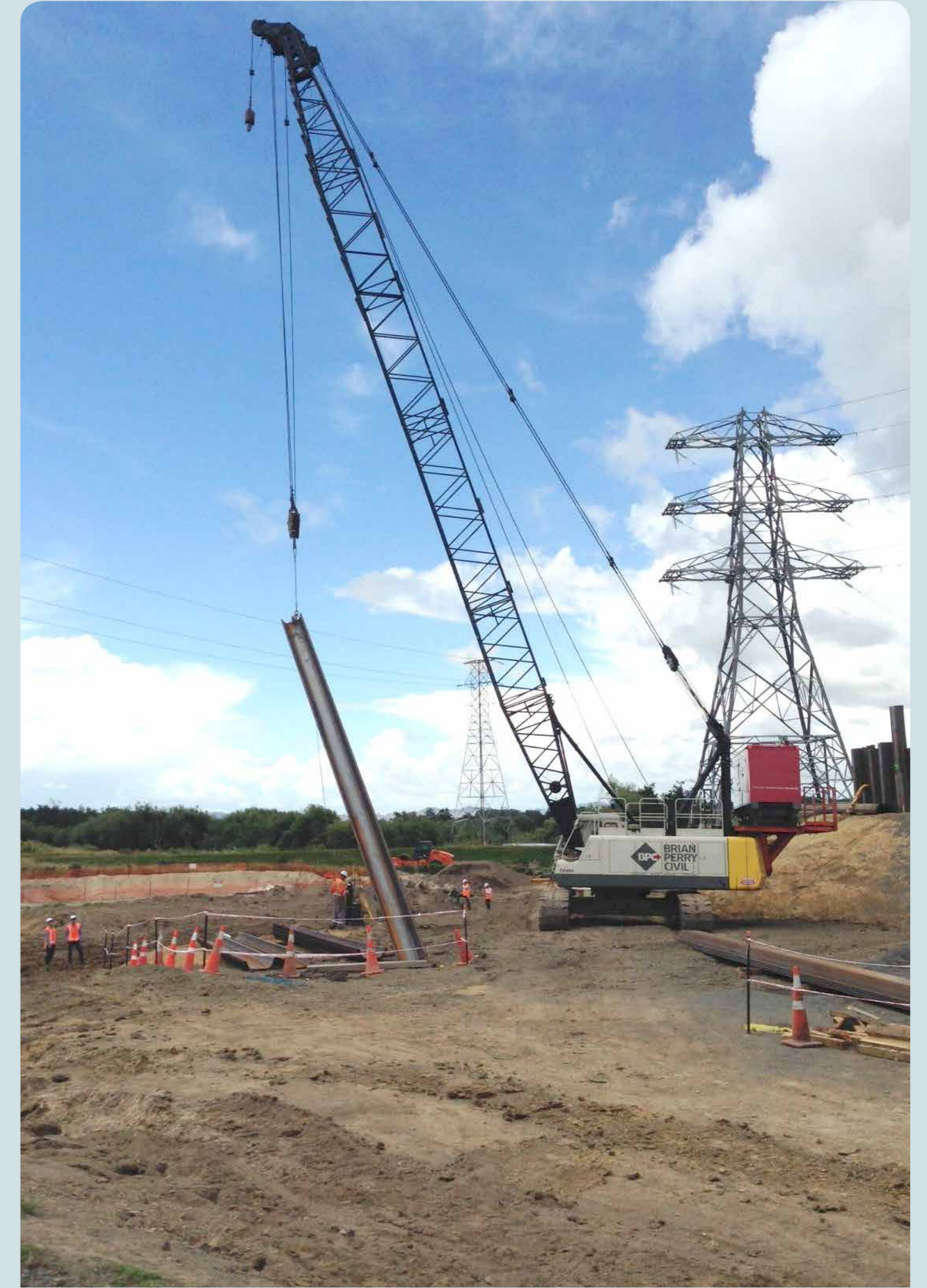
- Moved 130,000 cubic metres of the 800,000m³ to be moved. This equals 320 Olympic-sized swimming pools of soil
- Started construction of the new alignment on Te Onetea Road
- Temporarily relocated all mudfish
- Erected pou for the 150th anniversary of Battle of Rangiriri



Aerial photo over the project area looking north

On the programme this year

- Rangiriri bridge piling programmed for March 2014
- Completion of Te Onetea Road realignment by March 2014
- Completion of Rangiriri ground improvements by April 2014
- Temporary diversion of SH1 around the Te Kauwhata overbridge programmed by June 2014
- Rangiriri Interchange second traffic switch
- Service relocations around Wayside and Te Kauwhata Roads
- Wayside Road realignment (once design approved)
- Wayside/Te Kauwhata roundabout works
- Continue bulk earthworks operation through 2014
- Retaining wall construction at both Rangiriri and Te Kauwhata interchanges
- Wetland construction
- Widening works to SH1 south of the Rangiriri hotel
- Te Kauwhata and Rangiriri interchange bridges will both be completed
- Stopbank alterations to the riverside of the Te Onetea box culvert by late summer 2014/15



Top: Bridge piling at Rangiriri
 Bottom: Project earthworks

It's about the past as well as the future



Dramatic - A 200-strong group provided drama and theatre at the Battle of Rangiriri commemorations. Photo: Amy Hodge

While the Rangiriri Section of the Waikato Expressway is part of the future, all parties involved in its construction have had a strong focus on the past, such is the historical significance of the area.

On November 20, 1863 General Duncan Cameron led a force of more than 850 soldiers against the second Maori king Tawhio. There were 74 casualties.

The NZ Transport Agency, Fletcher Construction and other partners worked with Waikato-Tainui to help mark the 150th anniversary of the battle in November 2013. More than 1000 people attended. Earlier in the day two 6-metre high carved totara pou whenua, marking the battle site, were unveiled by the rising sun.



Unveiled - Pou marking the battle site were unveiled by the rising sun on November 20, 2013

Rangiriri's mudfish will return

Any major construction job requires careful consideration for the environment. One of the challenges for the Rangiriri Section build, along with all the usual measures to control runoff etc, has been the relocation and eventual return of a pocket of mudfish.

The native mudfish, classed as at-risk by the Department of Conservation, live in wetlands and bury themselves away over summer before emerging with the autumn rains.

A pocket of mudfish found near the site in 2009 were netted in mid-2013 and are being stored in tanks at Waikato University.



Mudfish like these are being kept out of the way until the project is finished

The fish will be returned to a much bigger specially-created habitat when the Expressway work finishes in 2016. Creating this new wetland is expected to help grow Rangiriri mudfish numbers.

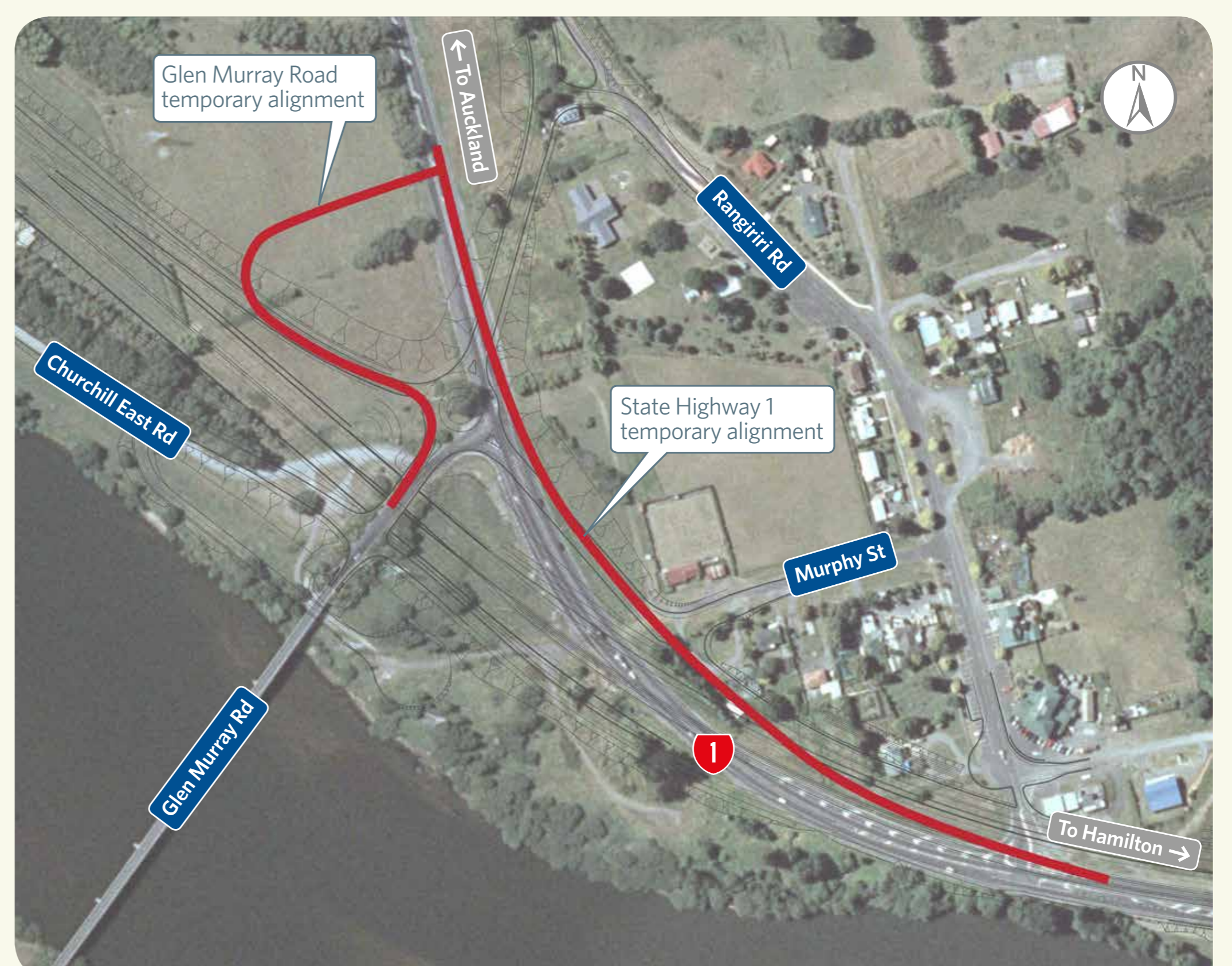


State Highway 1, from Plantation Road to Te Kauwhata intersection

- A temporary alignment of SH1 will be constructed by June this year. This is to allow space for building the Te Kauwhata Interchange, including the new overbridge
- The current speed restriction will remain in place
- Steel barriers will be installed to provide a safe environment for all road users and construction staff
- Cyclists encouraged to use Wayside Road
- The temporary diversion will remain in place until interchange works are completed

Glen Murray Road to State Highway 1

- Traffic has been diverted on to a temporary alignment on SH 1 and Glen Murray Road
- The current road configuration will be in place until late this year but once the new Rangiriri overbridge is constructed, Glen Murray traffic will use this new bridge and follow a new temporary alignment
- The traffic diversions enable the new interchange to be constructed



Glen Murray Road temporary link

Change at Wayside Road

It is proposed to reposition the link road between the Te Kauwhata Road roundabout and the Expressway interchange towards Wayside Road.

This will provide the following benefits:

- Reduce the roundabout from four legs to three - increasing roundabout capacity and safety
- Improve connectivity for Travers Road residents and better allow for future development in this area of Te Kauwhata
- Leave the gully area between SH1 and Wayside Road unchanged (where the link road was originally proposed), with greater future land use potential



Project works for the Te Kauwhata Interchange

