



## Waikato Expressway

### Ngaruawahia Section

Information Sheet November 2011

#### Quick facts

<b>LOCATION:</b>	The Ngaruawahia Section of the Waikato Expressway heads south from SH1B (Gordonton Road), near Taupiri, crossing flat farmland and the Waikato River before connecting with the interchange on the existing SH1 near Horotiu which is being constructed as part of the Te Rapa Section of the Expressway. The Ngaruawahia Section includes a new bridge crossing the Waikato River approximately 400m southeast (upstream) of the existing Horotiu Bridge.
<b>CURRENT STAGE OF WORK:</b>	Final design and construction
<b>LENGTH OF SECTION:</b>	12.3km
<b>EXPRESSWAY DESIGN:</b>	Two traffic lanes in each direction divided by a central barrier. Connection with the Expressway will be via grade separated interchanges only.
<b>SPEED LIMIT:</b>	100 kmph
<b>INTERCHANGES:</b>	Gordonton Road Interchange and Lake Road Interchange
<b>LOCAL ROAD OVERBRIDGES:</b>	Kainui Road, Lake Road and River Road
<b>PERMANENT ROAD CLOSURES:</b>	Howard Road
<b>TARGET COMPLETION DATE:</b>	2013
<b>ESTIMATED VALUE:</b>	\$150 million

#### Project benefits

The Waikato Expressway will be the key strategic transport corridor for the Waikato region, connecting Auckland to the agricultural and business centres of Waikato and Bay of Plenty. The Expressway will improve economic growth and productivity through more efficient movement of people and freight.

##### Other benefits include:

- reducing travel times between Auckland and Cambridge by 32 minutes
- reducing significantly the number of fatal and serious injury crashes
- reducing fuel costs
- reducing traffic congestion within smaller communities like Huntly, Ngaruawahia and Cambridge
- increasing the highway's capacity and passing opportunities.

##### The Ngaruawahia Section will:

- Connect the Huntly Section of the Expressway (due to be completed in 2019) to the Te Rapa Section, which is programmed to be completed in late 2012 and the Hamilton Section (due to be completed in 2019)
- Until the Huntly Section is completed, part of the existing SH1B (Gordonton Road) will be upgraded to connect the existing SH1 with the Ngaruawahia Section of the Waikato Expressway
- The Ngaruawahia Section, including the upgraded section of SH1B (Gordonton Road), will reduce traffic congestion and improve safety within Taupiri and Ngaruawahia by significantly reducing through traffic.

#### Work begins

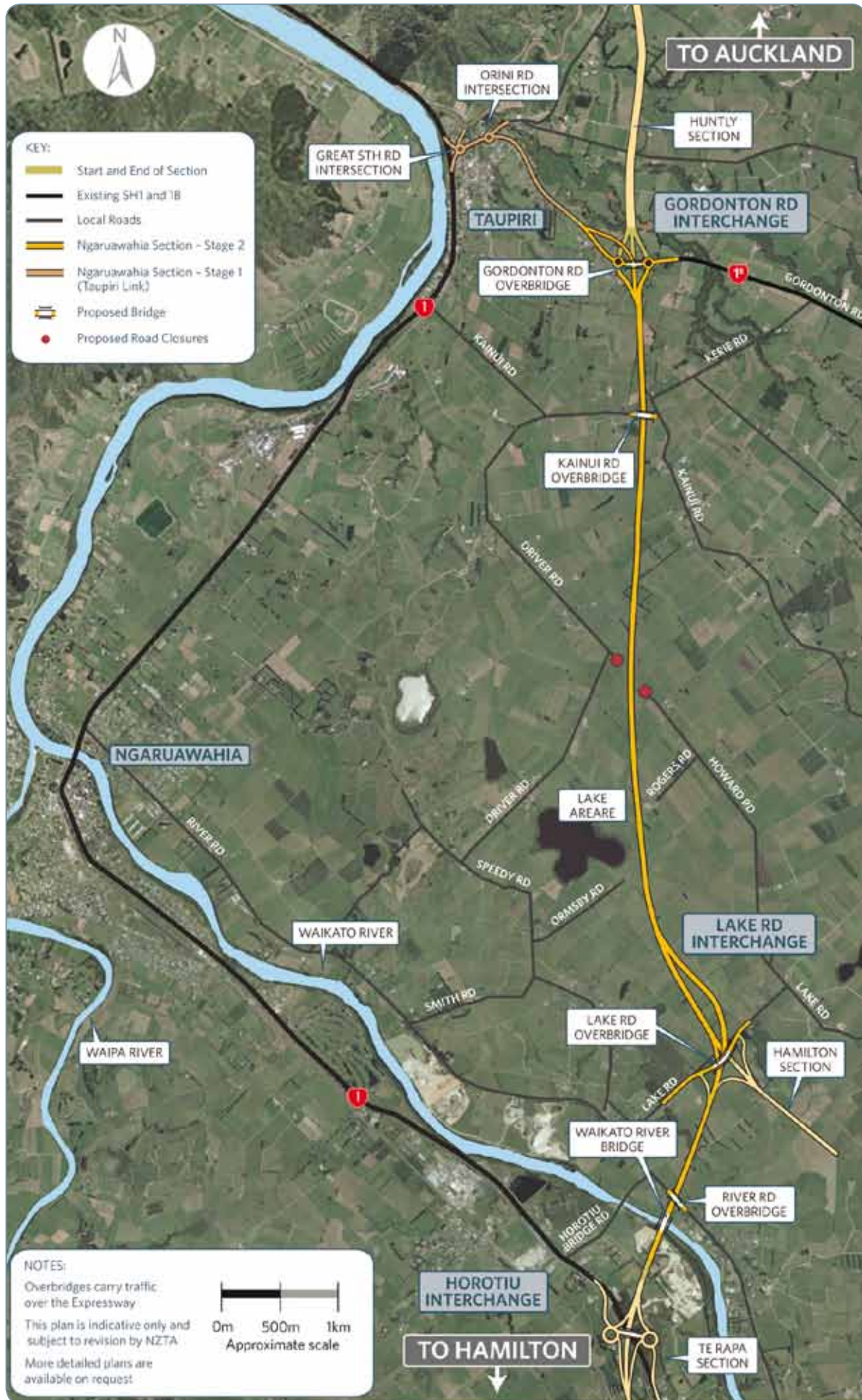
The Hon Steven Joyce, Minister of Transport, officially marked the commencement of construction for the \$150 million Ngaruawahia Section of the Waikato Expressway at a ceremony at Lake Road on Thursday 29 September 2011.



Joining the Minister at the ceremony was Waikato District Council Mayor, Allan Sanson, local Members of Parliament, other local representatives, kaumatua and representatives from Waikato-Tainui.



The NZ Transport Agency (NZTA) awarded the design and construction contract to Fletcher Construction in March 2011. The contract allows for final design and subsequent construction with completion scheduled for 2013.





## Planned Route

The Ngāruawahia Section will provide a four lane expressway between SH1B (Gordonton Road) and Horotiu.

An interchange will be constructed at Gordonton Road which will provide a dedicated link to SH1B and on through to Taupiri, whilst still allowing for a connection to the future Huntly Section of the Waikato Expressway. At Lake Road another interchange will be constructed that will provide connectivity to the future Hamilton Section of the Expressway.

Kainui Road, Lake Road and River Road will all pass over the Waikato Expressway on bridges that will be constructed as part of the project. The northern section of Howard Road between Driver Road and Rogers Road will also be permanently closed as part of the project.

The Waikato Expressway will also cross over the Waikato River on a new bridge to be constructed approximately 400m upstream from the existing Horotiu Bridge.

## Overview of Construction Programme

ACTIVITY	DESCRIPTION	CONSTRUCTION DATES
<b>Bridges</b>	Gordonton Road Kainui Road Lake Road River Road Waikato River	August 2012 - March 2013 January 2012 - July 2012 February 2012 - October 2012 April 2012 - September 2012 April 2012 - January 2013
<b>Earthworks</b>	Bulk earthworks General earthworks	October 2011 - April 2012 Will continue throughout the duration of the project.
<b>Drainage</b>	Culvert installation	September 2011 - January 2013
<b>Road Pavement</b>	Chipseal Asphalt	September 2012 - April 2013 Within 2 years of opening of Ngāruawahia Section.

## What's happening on the Local Roads?

Short term traffic management closures will be installed at various times along all local roads. Speed restrictions will be in place so caution will be required. Your patience with respect to any disruptions is appreciated.

ROAD	CLOSURE PROGRAMME
<b>Gordonton Road - (SH1B)</b>	Will remain open to traffic in both directions at all times.
<b>Kainui Road</b>	Will be closed between Driver Road and Kerie Road from June 2012 to August 2012. Access into private properties will be maintained at all times.
<b>Kerie Road</b>	Closed from Kainui Road to approximately 300m north of the intersection from August 2012 to September 2012. Access into private properties will be maintained at all times.
<b>Howard Road</b>	Permanently closed from August 2012 between Driver Road and Rogers Road.
<b>Lake Road</b>	Will remain open to traffic in both directions at all times.
<b>River Road</b>	Will remain open to traffic in both directions at all times.

## Environmental Management

The NZTA is committed to improving the contribution state highways make to the environment and social wellbeing of New Zealand by:

- Protecting and enhancing the environment
- Using and managing resources efficiently
- Considering environmental issues early
- Contributing to sustainable outcomes by working with others
- Continually improving environmental performance.

### Landscaping

Landscaping and planting will be used to mitigate the visual impacts of the new Expressway and create a pleasant environment for both road users and others.

Ecological enhancement planting will be undertaken at important sites along the Expressway, namely Lake Areare, Kainui Road wetland, Waikato River Crossing and the gully system on the former Simpson's Farm on Lake Road.

### Ecological Mitigation

**Bats** - A Bat Management Plan was approved by the Waikato Regional Council in September 2011. Once dusk temperatures rise above 5 degrees later in spring 2011, Fletcher Construction will commence bat monitoring which is required immediately prior to any tree clearance where bats may be present.

**Fish** - As drains and streams are replaced by culverts across the alignment, native fish species will be captured and relocated.

### Noise Control

Noise levels will comply with the relevant standards. Measures used will include:

- Monitoring of noise during construction and advance notification of any unavoidably noisy construction activity
- Haul routes for moving materials will be away from main roads and residential houses wherever practicable
- Noise barriers to protect houses from road noise
- The application of an asphalt surface over the full length of the expressway to assist in reducing vehicle noise.

## Te Awa Walkway

The Te Awa Walkway is located along the southern (Horotiu) bank of the Waikato River. In future this walkway will form part of the "Te Araroa Walkway - The Long Pathway" stretching from Cape Reinga to Bluff. A small section of the Te Awa Walkway is affected by construction of the Waikato River bridge. Fletcher Construction will re-construct this affected section of the walkway around the works to ensure it is able to be used by pedestrians and cyclists during bridge construction.



### Archaeological Investigations

Archaeological investigations are progressing at the former Simpson's Farm on Lake Road. The NZTA have appointed an archaeologist to investigate potential garden sites that are commonly found in this region. Excavations so far have revealed borrow pits up to 5m deep where sand was extracted, and garden sites where sand was mixed with topsoil to improve growing conditions. Maori developed these unique gardening techniques to grow Kumara in the NZ climate.

A notable discovery to date has been the first Kumara Pits ever discovered in the Waikato Region. Kumara pits were used to better store vegetables in a cooler environment. The kumara pits found are in two designs; one type is a rectangular semi-subterranean pit and the other type is a completely subterranean form. There is still more work to be done to date the gardens and investigate further sites in the project area.

### Trial Embankment

Construction of a trial embankment has commenced on farmland near the Kerie Road / Kainui Road intersection. This embankment will incorporate a range of settlement monitoring devices to better understand the performance of the ground when the fill embankments for the Waikato Expressway carriageway are constructed. The trial embankment will also provide the construction and design teams with a greater appreciation of how the proposed embankment fill materials behave with this information used to further develop the design.



#### For more information

For further information online visit:  
[www.nzta.govt.nz/rons](http://www.nzta.govt.nz/rons)  
[www.nzta.govt.nz/projects/waikato-expressway](http://www.nzta.govt.nz/projects/waikato-expressway)  
[www.nzta.govt.nz/projects/Ngaruawahia](http://www.nzta.govt.nz/projects/Ngaruawahia)

## Contact Details

For enquiries and information regarding the Ngaruawahia Section of the Waikato Expressway:

#### Site and construction enquiries

Freephone 0800 BYPASS (0800 297 277)

#### WENDY AUSTIN

Traffic and Stakeholder Manager  
 Mobile: 027 206 4212  
 Email: wendya@fcc.co.nz

#### KARA FLEMING

Communications and Stakeholder Liaison Manager  
 Waikato Expressway  
 Phone: 07 958 7943  
 Mobile: 027 2942649  
 Email: kara.fleming@nzta.govt.nz

