



## Waikato Expressway

### Rangiriri Section

Information sheet July 2013

## Update on progress

The focus of the project team over the past three months has been on service relocation and site preparation ahead of the start of construction on the main alignment and the two interchanges on the section.

The relocation of Transpower lines off Churchill East Road and site clearance, around the area where the Rangiriri Interchange will be constructed, is underway and due for completion this month.

The team has also been focussing on site preparation for a new boat ramp access off Glen Murray Road and clearance work happening in the area where the Te Kauwhata Interchange will be constructed.

Wick drains have now been installed in the trial embankment area off Churchill East Road

and the associated aggregate drainage blanket is being placed.

This area is being used to test the settlement period required for building the main alignment of the road.

These wick drains function as a water draining channel, drawing water out of the ground and significantly reducing the settlement time.

### Environmental controls

Weekly external audits by the Waikato Regional Council have been undertaken and a high environmental performance has been achieved to date. The project team is committed to maintaining a high standard of environment control throughout the project duration.

### Site office setup

The site office is now established at the end of Murphy Street and Fletcher Construction has also recently taken over the adjoining house to extend their compound.



### For more information

Follow us on facebook:  
[www.facebook.com/waikatoexpressway](http://www.facebook.com/waikatoexpressway)



Aerial photo over the project area, looking north.



### Rangiriri Interchange

Enabling activities around the future interchange are currently underway. These works include the relocation of the existing services and the two 110kV Transpower Hamilton to Mercer (Hammer) power lines, all of which will continue through to this month.

Members of the public will have also noticed that tree felling and other vegetation clearance, happening on either side of Glen Murray Road, is essentially complete. The new boat ramp access is currently being constructed just north of the bridge and should be operational over the coming months.

The southern access to Churchill East Road (off Glen Murray Road) has now been closed to enable the construction of the new interchange and in particular the new north facing ramp for the interchange that will connect onto the existing Churchill East Road. Access to both Churchill East Road and the boat ramp is now via Plantation Road from the north.

Later this year, traffic travelling over the Glen Murray Bridge will be diverted down this new north facing ramp and to a new temporary intersection with SH1 located approximately 100m north of the existing intersection.



Aerial view of future Rangiriri Interchange, with Transpower pylon relocation works underway on bottom right hand side.

### Te Kauwhata Interchange

We are currently undertaking vegetation clearance works and geotechnical testing in the gully to the north of Te Kauwhata Rd in an area referred to as the DOC Gully.

Other works that are being initiated in the area are service relocations to ensure any services are moved before future works happen in the area.

In terms of traffic management the left hand northbound passing lane that currently starts just north of Rangiriri will be taken down to one lane in August or September. This will enable the new Te Kauwhata overbridge to be constructed and the bulk earthworks to get underway.

The project team will ensure these works are well signalled to the community prior to the works taking place.



Aerial photo over the project area, looking south.



Earthworks in the region of 400m north off Glen Murray Road showing wick drains.

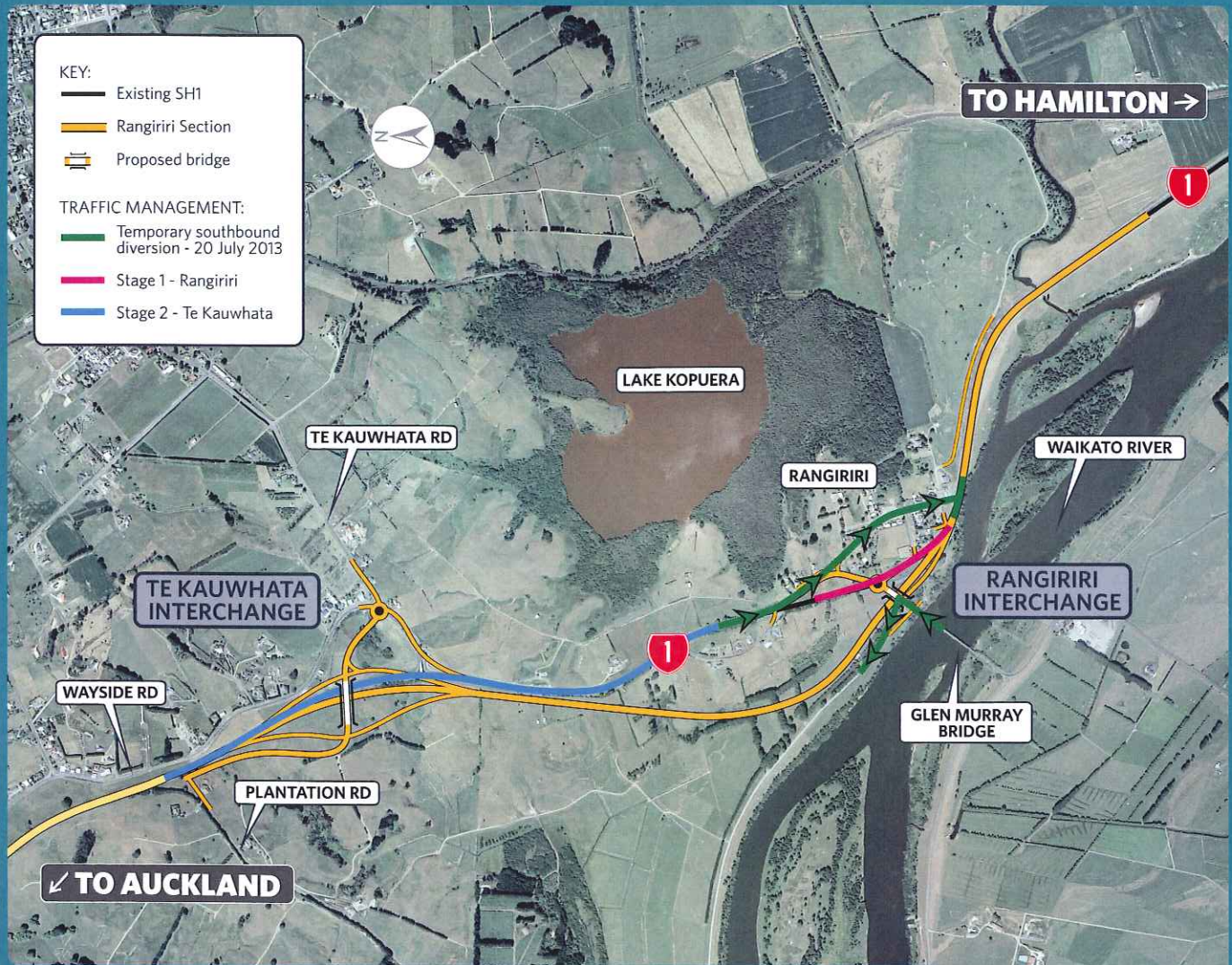
### What else is happening on the roads?

Churchill East Road has now been closed to the public at the Glen Murray Road end. Access to Churchill Road and the boat ramp is now from Plantation Road to the north.

The project team would like to thank all residents and motorists for their patience while these closures and diversions are in place.

They are to ensure the safety of all road users and our construction crews to ensure they are kept separate and safe during the construction of this section.





Rangiriri Section traffic management update.

## Traffic management update

DATE	ROAD	CLOSURE PROGRAMME
20 July 2013	<b>Temporary southbound traffic diversion</b> SH1 - between the southbound Rangiriri Road off ramp and the Rangiriri Road SH1 intersection. Southbound traffic will be diverted onto Rangiriri Rd passing through the township and onto SH1.	The southbound lane will be closed between 7am Saturday July 20 and 7pm Saturday July 20 to allow the installation of median barriers along this section of SH1.  In the advent of bad weather this will be moved to the next suitable day.
November/December 2013	<b>Stage 1 - Rangiriri</b> SH1 short diversion at Rangiriri.	SH1 traffic will be diverted on a temporary road alongside SH1 to allow the start of construction on the Rangiriri Interchange.
August/September 2013	<b>Stage 2 - Te Kauwhata</b> SH1 Rangiriri to Te Kauwhata.	The left hand northbound lane on SH1 will be closed to traffic. This is to allow the start of construction on the new overbridge.





### Mudfish relocation

A large population of black mudfish have been relocated off-site this month with the help of our project ecologists Kessels Ecology.

The native mudfish live in wetland environments and hibernate over the summer months, burying themselves in mud until the rains come during the autumn and winter and the eel like fish venture out for mating season.

The species is listed as at risk by the Department of Conservation, the number of black mudfish in decline, but it is hoped that the work at Rangiriri will increase numbers in this habitat over the next three years.

NZTA, Waikato Expressway Principal Project Manager Richard Young says, the pocket of mudfish were discovered during the investigation stage of the project in 2009. A construction sequence and management plan has been developed together with Fletcher Construction and Senior Ecologist David Riddell from Kessels Ecology to preserve and enhance their habitat at Rangiriri, as part of the project.

The mudfish were netted by ecologists this month and transferred to holding tanks at Waikato University for the duration of the project before being released back to their new home in late 2016.

The nine tanks at Waikato University have been used successfully for mudfish relocation on a number of projects since 2005.

Kessels Ecology Senior Freshwater Ecologist Jennifer Blair says the recent wet weather is perfect for mudfish capture, as the fish are most active during the wet season.

“Though they look quite unassuming, these fish are pretty unusual in their ability to survive seasonally dry conditions. Mudfish habitat is still disappearing, and so we need to preserve isolated populations such as the one at Rangiriri,” says Dr Blair.

Prior to European colonisation vast areas of New Zealand were seasonal wetland and mudfish were widespread. Dr Blair says today, as over 90 per cent of these wetlands have been drained to make way for agricultural and urban development, they are far scarcer.

The mudfish habitat at Rangiriri currently covers approximately 195 square metres and includes a drain which will be partially crossed by the new Expressway. A considerably larger 300 square metre habitat is being created as part of the project to the south of their existing ponds.

“Their existing habitat is currently populated with weeds and exotic species. Creating this new wetland for them allows us to provide them with an enhanced habitat to hopefully grow numbers even further upon their release,” says Dr Blair.



#### For more information

For further information online visit:

[www.nzta.govt.nz/rons](http://www.nzta.govt.nz/rons)

[www.nzta.govt.nz/projects/waikato-expressway](http://www.nzta.govt.nz/projects/waikato-expressway)

## Our contact details

For enquiries or information regarding the Rangiriri Section of the Waikato Expressway.

NICOLA BOYES  
 Communications and Stakeholder Liaison Manager  
 Waikato Expressway  
 Phone: 07 958 7888  
 Mobile: 021 615 461  
 Email: nicola.boyes@nzta.govt.nz



Follow us on facebook