



Waikato Expressway



Hamilton Section

Update No. 3
September 2012

Update on progress

Since the December 2011 update:

- The project team has continued to work on the draft scheme and costing of the expressway project
- Ruakura Structure Plan Open Days were held in May and feedback has been provided to interested parties who attended them
- The project team has recently reviewed the connectivity of the expressway at the Resolution, Ruakura and Tamahere interchanges, in conjunction with Hamilton City Council and Waikato District Council
- Extensive consultation has been undertaken with local iwi regarding environmental and cultural impacts of the project, particularly in relation to gully crossings
- Consultation has been ongoing with potentially affected landowners.

Resolution Drive Interchange

Although this interchange is not currently included in the Hamilton Section designation, the designation is likely to be amended to include it.

Investigations are still underway to assess the feasibility of options for the connection of Resolution Drive to the Expressway and a possible extension to Horsham Downs Road.

If Resolution Drive is extended to Horsham Downs Road, consideration could be given to closure of Osborne Road and/or Kay Road at the expressway crossing.

Fifth Avenue Interchange

Initial investigations of connections into Hamilton City focused on interchanges at Greenhill Road and SH26 Morrinsville Road, with a subsequent modification to include a connection at Ruakura Road.

Open day

The Fifth Avenue Interchange options will be presented to the public at an Open Day:

at **Marist Club Rooms**
147 Old Farm Road, Hamilton East

on **Wednesday 19**
September 2012

between **2pm and 7pm.**

Further investigations have identified that a single interchange at Fifth Avenue would provide a more efficient and cost effective solution, and detailed investigations are currently underway to confirm this.

An interchange at Fifth Avenue will effectively consolidate the Greenhill Road and Ruakura Road interchanges into one, with a more direct connection to the Hamilton Cross-City Connector (Fifth Avenue and Boundary Road).

With a Fifth Avenue Interchange, the likely connection at SH26 would be as currently designated, with north facing ramps.

Tamahere connectivity

The project team has recently undertaken a feasibility study of a wide range of potential network connection options associated with the Southern Interchange in the Tamahere area. The results of this study will be discussed with Waikato District Council and the Tamahere Community before a preferred option is finalised.

Project benefits

When complete the Waikato Expressway will be the key strategic transport corridor for the Waikato region, connecting Auckland to the agricultural and business centres of Waikato and Bay of Plenty. The Expressway will improve economic growth and productivity through more efficient movement of people and freight.

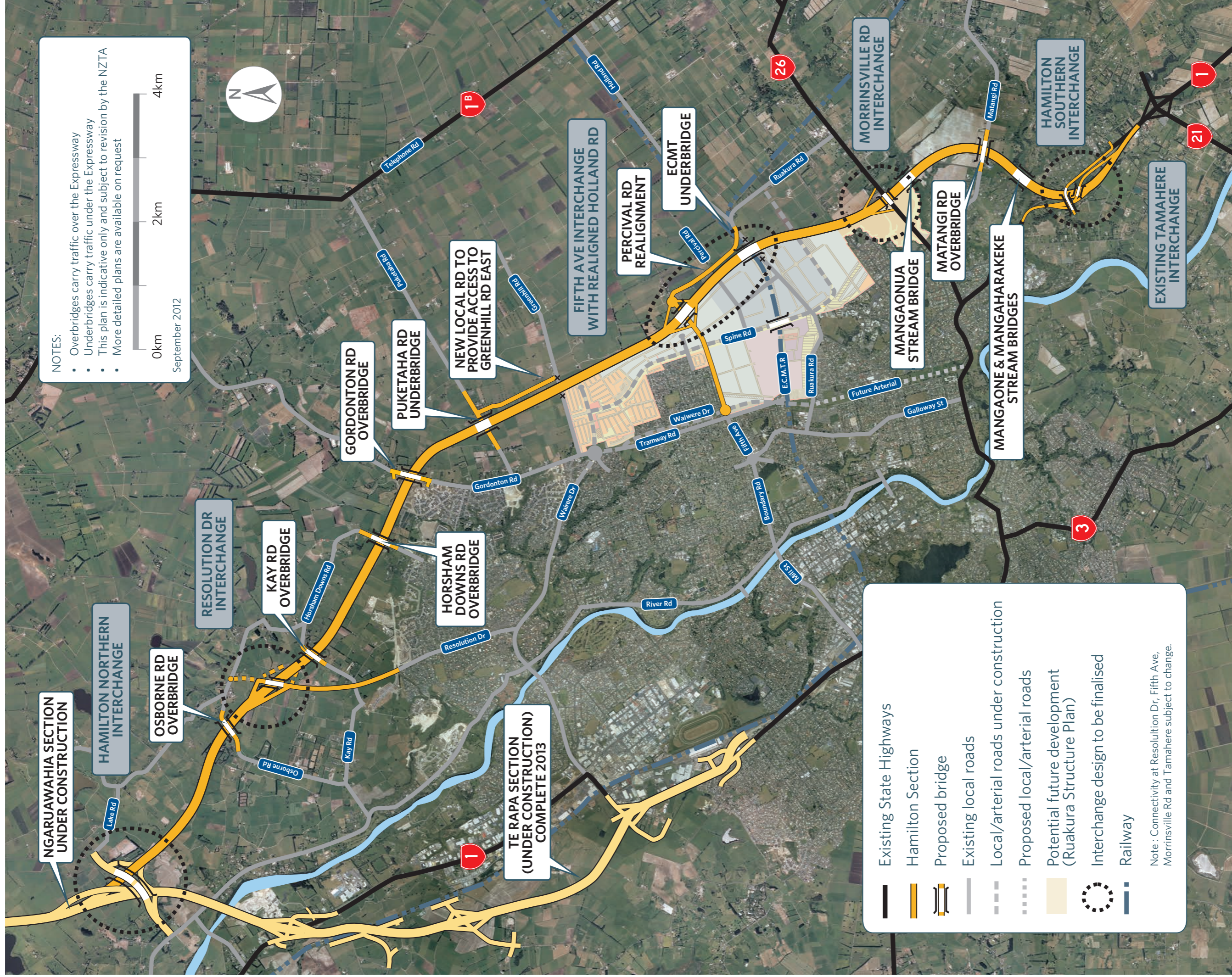
Other benefits of the Waikato Expressway include:

- Reducing travel times between Auckland and Tirau by 35 minutes
- Reducing significantly the number of fatal and serious injury crashes
- Reducing fuel costs
- Reducing traffic congestion within smaller communities like Huntly, Ngaruawahia and Cambridge
- Increasing the highway's capacity and passing opportunities.

The Hamilton Section will:

- Connect the Ngaruawahia Section of the Expressway, due for completion in 2014, to the existing Tamahere Interchange
- Reduce traffic congestion and improve safety on Hamilton's local road network by significantly reducing the volume of through traffic including trucks.

This project is part of the larger Waikato Expressway programme of work. The Waikato Expressway is one of seven roads of national significance for New Zealand. When completed it will be 102 km long, running from the Bombay Hills to south of Cambridge.



Process and indicative timeframes

When	What's happening...
Early September 2012	Circulation of the NZTA newsletters to the public
19 September 2012	Open Day for the Fifth Avenue Interchange
December 2012	Investigations completed and final scope identified
Early 2013	Lodgement of consents
Mid 2013	WDC, HCC & EW publicly notify the applications
Mid 2013	Third public open day for consultation over design issues
Late 2013	Hearing of resource consents and potential alterations to designation
Early 2014	Final specimen design
Mid 2014	Tendering for design and construction of Hamilton Section of the Waikato Expressway
2015	Construction is planned to start

Mangaone and Mangaonua Gullies

Extensive work has been undertaken in relation to the Mangaone and Mangaonua Gully crossings located to the north of Tamahere.

Because the Expressway crossings will be costly and are likely to have a significant impact on these gully systems numerous crossing options have been investigated.

The options include long span bridges, culverts, and various multi-span arrangements.

Investigations of the gully crossings are ongoing and have included:

- Bat and other ecological surveys
- Geotechnical investigations
- Extensive consultation with local iwi.



Artists impression of Mangaone gully crossing in Tamahere



For more information

For further information online visit:

- www.nzta.govt.nz/projects/waikato-expressway
- www.facebook.com/waikatoexpressway

Our contact details

For enquiries or information regarding the Hamilton Section of the Waikato Expressway.

NICOLA BOYES
 Communications and Stakeholder Liaison Manager
 Waikato Expressway
 Phone: 07 958 7888
 Mobile: 021 615 461
 Email: nicola.boyes@nzta.govt.nz

FOR MORE INFORMATION ON THE HAMILTON SECTION VISIT US ON:

