

# Project Update for the Community Liaison Group Meeting 5 on 13 November 2013 Pringle Park Bowling Club, Te Atatu Peninsula

# Western Ring Route State Highway 16



Note: Location of dashed boundary lines are indicative only.

# Agenda

- Welcome, introductions and agenda
- Causeway progress update
  - Stakeholder survey feedback
  - Construction progress
  - Environmental reports
  - Legacy outcomes
- Te Atatu Interchange Upgrade overview
- Discussion

# Causeway construction progress update





CASTLE  
PORTABLE  
BUILDING SOLUTIONS  
FOR MORE INFO CALL  
0800 780 900

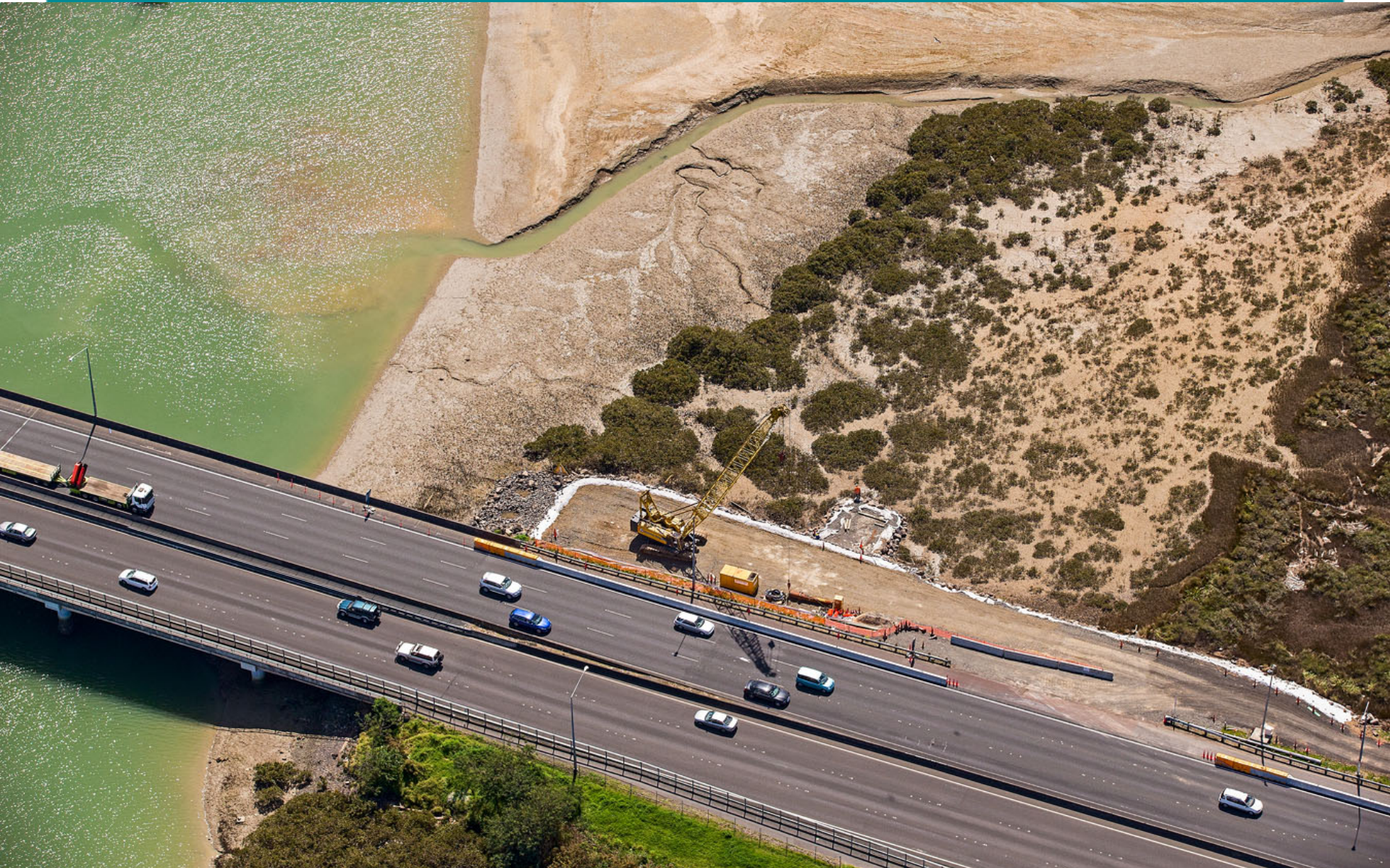


STVA

# Alwyn Avenue - access to widen Whau River Bridge



# Whau River – access to widen Whau River Bridge



# Whau to Rosebank





# Rosebank to Patiki



# Patiki to Rosebank

CAUSEWAY ALLIANCE  
working for our thriving city



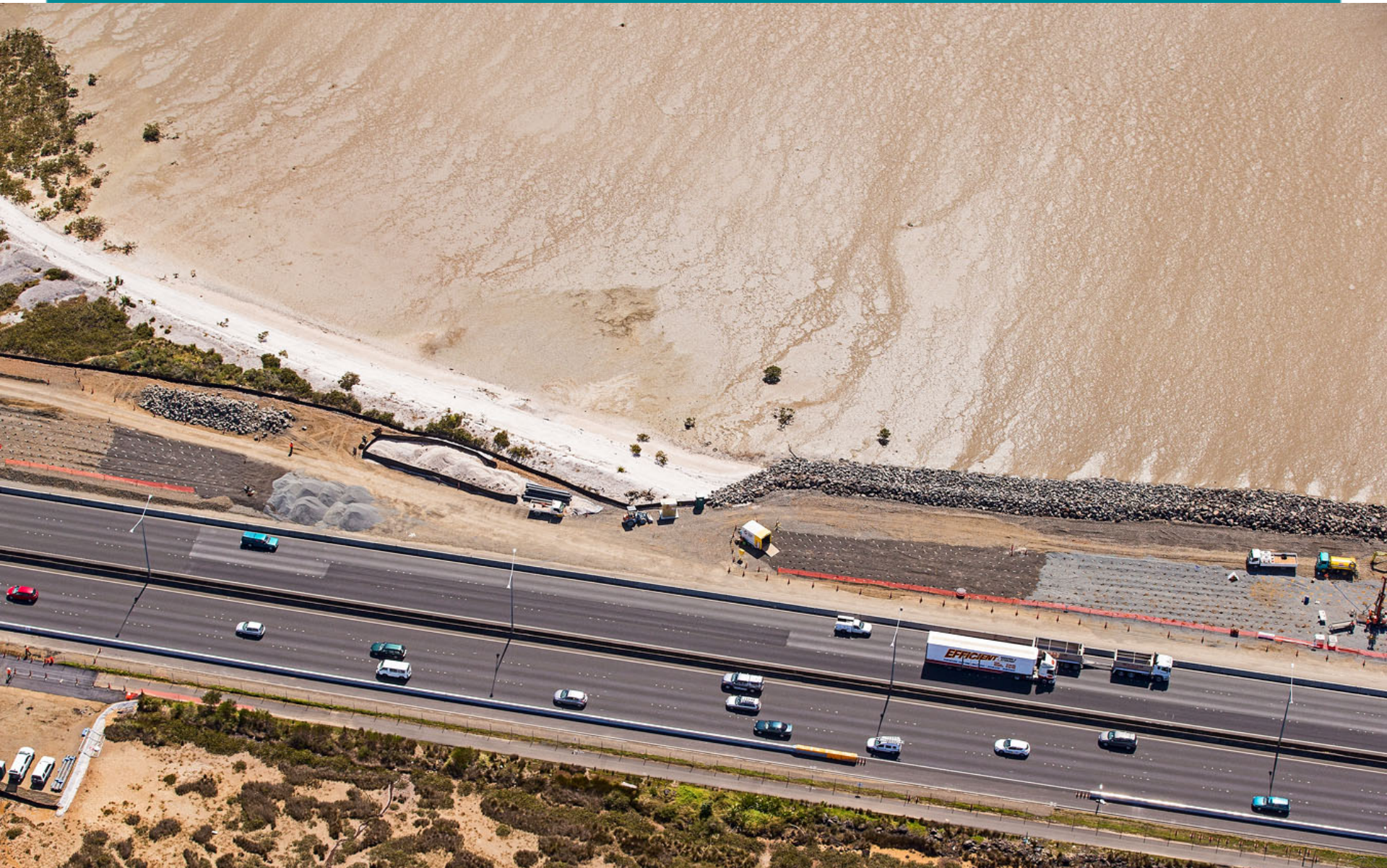
# Rosebank to Traherne Island



# Traherne Island



# Traherne Island to Causeway



# Traherne Island to Causeway



# Causeway Bridge to Great North Road



# Great North Road Interchange – Oakley Creek





# Speed limit



# Environmental reporting

- Urban Design and Landscape Plan and monthly Auckland Council environmental reports on project web site
- Harbourview-Orangihina bird roosting counts:
  - Aug 2013 = 58 birds, 2010 = 61 birds
  - Sept 2013 = eight birds, 2010 = nine birds
  - Oct 2013 = 12 birds, 2010 = 11 birds
- Finalising bird roosts at Causeway Bridge
- Erosion and sediment control scores = 1, excellent
- Replanted the vegetation over clearance at Traherne Island
- Lizards released in Harbourview-Orangihina



# Environmental and Cultural Legacy outcomes

- Meetings provided 26 ideas and options
- Draft summary sheet distributed, with priorities
- Primary outcome areas:
  - Environmental improvement
  - Education and information
  - Celebrate culture and heritage
  - Improved access to Marine Reserve
- Progressing build out / viewing areas, Rosebank embankment, art work / way finding / heritage landmarks, information signs

# Agenda

- Welcome, introductions and agenda
- Causeway progress update
  - Stakeholder survey feedback
  - Construction progress
  - Environmental reports
  - Legacy outcomes
- **Te Atatu Upgrade overview**
- Discussion

# Introducing the Te Atatu Interchange team

- Donald MacRae: NZ Transport Agency Project Manager
- Brian Robertson: Contractor's Representative for SH16 Lincoln Road and Te Atatu Interchange Upgrade projects
- Nettie Bird: Communications Liaison Manager



**Causeway and Te Atatu Interchange Upgrade Projects**

COMPLETING THE WESTERN RING ROUTE ROAD OF NATIONAL SIGNIFICANCE

# Introduction

- October: Te Atatu Interchange Upgrade project contract awarded to Fulton Hogan, with Beca as head designer
- Fulton Hogan are also:
  - constructing the Lincoln Road upgrade
  - part of the Causeway Alliance delivering the Causeway Upgrade Project
- Beca are designing the Waterview Connection Project and were part of the Board of Inquiry consenting team

# Project Objectives

- Improved cycle facilities: grade-separating and extending the north-west shared path (to join in with Lincoln Road)
- Improved capacity along Te Atatu Road with an additional lane in each direction
- Improved capacity on the mainline to accommodate the additional traffic from the Waterview Tunnel
- Reduced environmental impacts: treatment of stormwater runoff and introduction of noise walls



# Project Overview



# Programme

- Detailed design has started and will run to March 2014
- Urban design and shared path design will be presented to the next CLG for comment
- Enabling works have begun with house removal / demolition in Titoki St
- Construction of the interchange will begin in January 2014 and will take approx. two years



NZ TRANSPORT  
AGENCY  
WAKA KOTAHĪ

16

**Causeway and Te Atatu  
Interchange Upgrade Projects**

COMPLETING THE WESTERN RING ROUTE ROAD OF NATIONAL SIGNIFICANCE

# More project information

## (Te Atatu Interchange Upgrade)

- Project contact: Nettie Bird, [nettie.bird@fultonhogan.com](mailto:nettie.bird@fultonhogan.com)
- Freephone: 0800 444 449 | mention “Te Atatu Interchange”
- Project’s page on the Transport Agency website will be created, and updated with latest plans and milestone programme dates
- Information Centre will be established at No. 2 Titoki St in early 2014
- Alwyn Ave bund meeting with residents proposed late 2013/early 2014



**Causeway and Te Atatu Interchange Upgrade Projects**

COMPLETING THE WESTERN RING ROUTE ROAD OF NATIONAL SIGNIFICANCE

# More information (Causeway Upgrade Project)



- Community Liaison Group (CLG) meetings
- Freephone 0800 444 449 | mention “Causeway”
- Causeway News – regular project email updates
- [www.nzta.govt.nz/projects/sh16-causeway](http://www.nzta.govt.nz/projects/sh16-causeway)
- Visit [www.nzta.govt.nz/stayconnected](http://www.nzta.govt.nz/stayconnected)
- Communications and Stakeholder Manager:
  - [elizabeth.collins@sh16causeway.co.nz](mailto:elizabeth.collins@sh16causeway.co.nz)



**Causeway and Te Atatu  
Interchange Upgrade Projects**

COMPLETING THE WESTERN RING ROUTE ROAD OF NATIONAL SIGNIFICANCE



# STAY CONNECTED

## KEEP INFORMED ABOUT WHAT'S HAPPENING ON THE WESTERN RING ROUTE.

Welcome to the travel information page for the Western Ring Route. Here you can keep informed about what's happening along the route so you can be prepared and plan your trip. We'll be keeping this page up to date with changes that could affect your travel. The more you check the better prepared you'll be.

### Changes will bring long-term benefits

The NZ Transport Agency is working hard to get the Western Ring Route RoNS completed. We need to be ready when the Waterview tunnels connect the Northwestern (SH16) and Southwestern (SH20) motorways. When we've finished there'll be better travel choices for everyone, more lanes on the motorway, more room for buses and better facilities for walkers and cyclists.

This is NZ's largest roading project to date. And with five projects on the go - there's a lot to be done. Delivering its many benefits means a lot of construction activity. To keep the Northwestern motorway open and to keep people safe, we'll need to manage the traffic and that means at times, there will be impacts for all motorway users.

We'll be introducing new measures to help get people through. We'll keep a close eye on these measures and adjust if we have to.

Please be patient, drive with care and stay connected.



### WHAT YOU CAN DO

- Stay in lane
- Use public transport when possible
- Give way to buses
- Drive social
- Keep the gas tank full
- Keep your distance
- Brake gently
- Stay alert
- Merge like a zip

### SIGN UP FOR THE MOVE

Don't forget to sign up for OnTheMove.

It's a free, customisable travel information service - simply choose the route details you travel the most and you'll get emails direct to your inbox before you travel, letting you know if anything might delay arrival at your destination.

# Other SH16 info and contacts



- Next CLG meeting is **Tuesday 18 February 2014, 7pm**, here
- Proposed Te Atatu Bus Interchange:
  - [nick.seymour@aucklandtransport.govt.nz](mailto:nick.seymour@aucklandtransport.govt.nz) | Ph 355 3553
- Waterview Connection Board of Inquiry, technical reports | consents:
  - <http://www.nzta.govt.nz/projects/wrr/publications-archive-enquiry.html>



**Causeway and Te Atatu Interchange Upgrade Projects**

COMPLETING THE WESTERN RING ROUTE ROAD OF NATIONAL SIGNIFICANCE

# Questions and discussion

