



4 November 2014

Brigitte Dunbar

Environmental Officer
SH16 Causeway Upgrade Project
Te Atatu Peninsula
PO Box 68651, Newton, Auckland 1010

<mailto:brigitte.dunbar@SH16causeway.co.nz>

Dear Brigitte

Monthly Causeway Pest Control Report, October 2014

Weekly pest control visits have continued along the Causeway throughout October. Bait stations and traps were checked and re-baited as necessary. Four visits in total were carried out. The dates for each visit along with the results for each can be seen in Table 1. Monitoring also took place on October 21 and 22, the results can be seen in Table 2.

Baiting

The total amount of bait consumed at each station over October can be seen in Figure 1. In total, 2,548 g of bait was consumed over this period. The results for each week can be seen in Table 1.

Trapping

One stoat, four rats and a mouse were caught in the DoC traps in October. The locations of these can be seen in Figure 2. The results for each week can be seen in Table 1.

Table 1: Results of weekly pest control visits carried out in October 2014

Pest Control Visit Date	Total Bait Take	Total Trap Catch
October 7	280g	Stoat + Rat
October 14	616g	2 x Rat + Mouse
October 21	924g	Nil
October 28	728g	Rat

Monitoring

Ink tracking cards baited with peanut butter were placed out overnight inside the existing tracking tunnels on October 21. These were collected on October 22. Results can be seen in Table 2 below.

Table 2: Monitoring results October 2014

Species	Cards Marked (out of 7)	Tracking Index
Rat	1	14%
Mouse	5	71%
Stoat	0	0%

Discussion

Pest activity over October has been higher than that recorded over September both in terms of bait take (2,548 g of bait consumed over October vs. 1,932 g over September) and trap catch (one stoat, four rats and a mouse in October vs. three mice in September).

These results, in particular the stoat catch, are encouraging as this is the time of year when native ground nesting birds are at the highest risk from introduced predators.

Only one monitoring tracking card showed signs of rat activity (near the Patiki Road onramp). While the tracking index figure may seem high, this is a result of the small total number of cards used.

The mouse tracking index continues to be high, which is normal in areas where rat control is being carried out effectively.

Weekly checks will continue on Tuesday mornings throughout November.

Please contact me if you require more information or have any questions.

Kind Regards,



Joel Leong

Ecological Restoration & Consultancy Support
Te Ngahere
Rosebank Post Centre, PO Box 71109
Auckland 1348

021 726 239



Figure 1: Map showing dipacinone bait consumption in grams recorded over October 2014

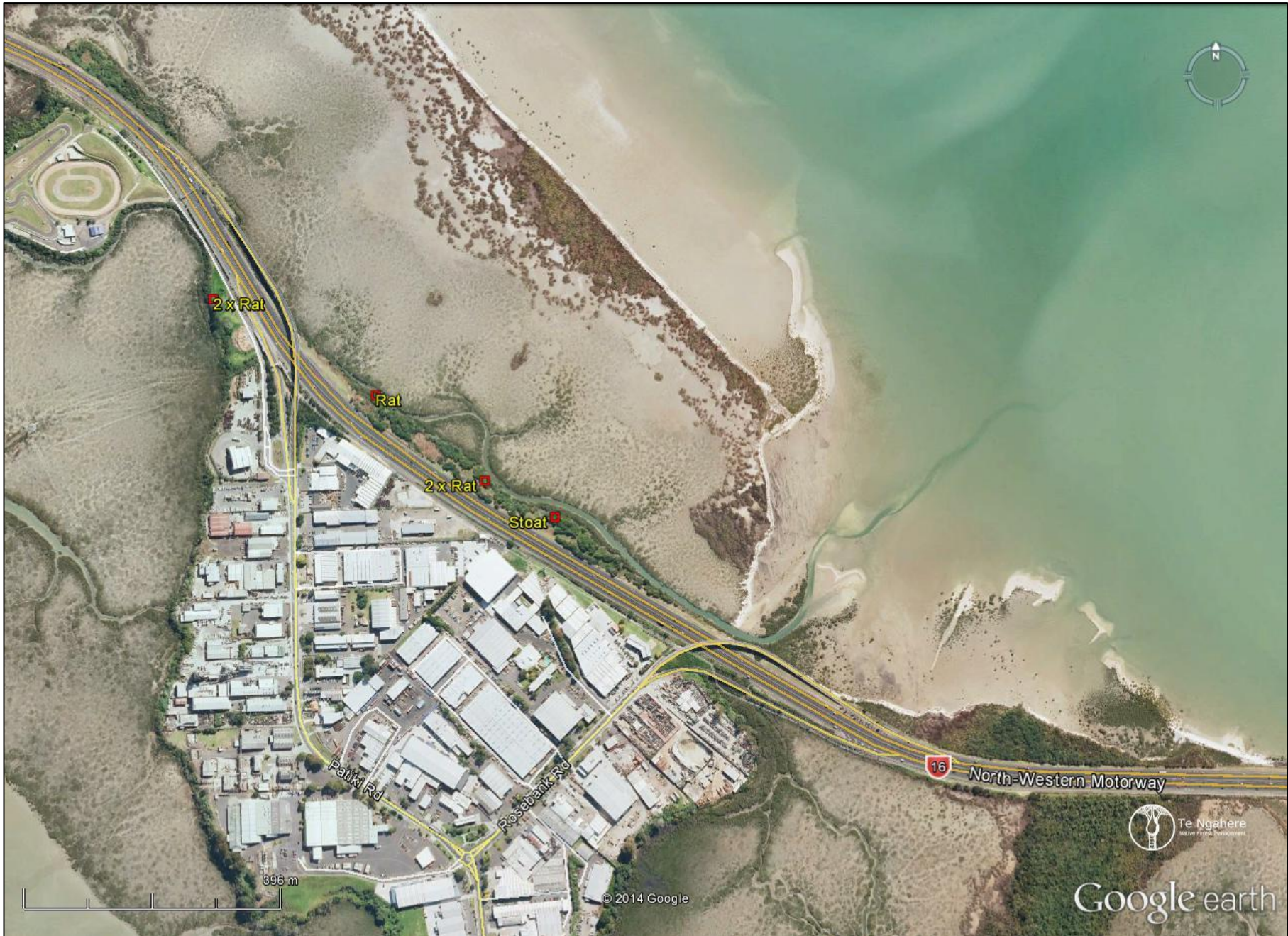


Figure 2: Map showing trap catch recorded over October 2014