



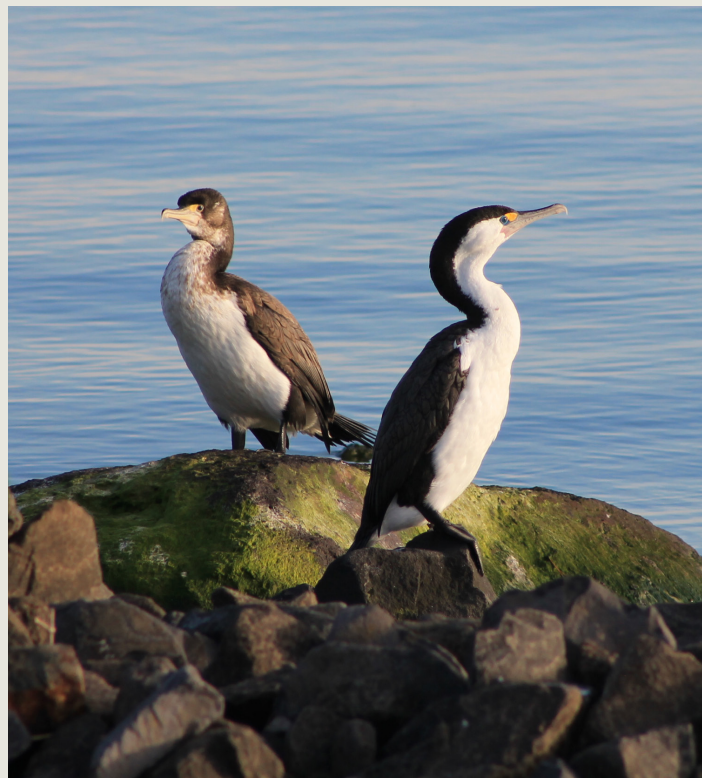
Spring in the Causeway Air

It really does feel like spring on the Causeway. In addition to the stunning shags which were photographed one clear morning in September and the seal spotted swimming around the Whau River bridge piers, a dotterel is nesting on three eggs amongst construction materials at the Great North Road interchange. The nest has been carefully partitioned off to ensure it remains undisturbed by our team working in the area.

The local environment and wildlife is never far from our minds, particularly as a section of State Highway 16 between Rosebank Road and Te Atatu Road runs alongside the Motu Manawa Pollen Island Marine Reserve. A number of innovative construction techniques are being used to make sure that the risks to the marine reserve nearby are well managed

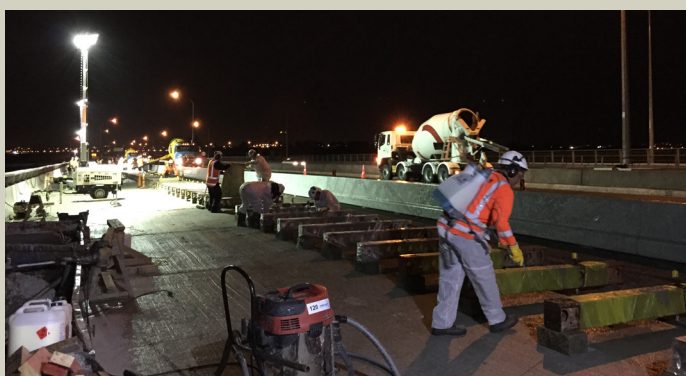
Some examples of environmental protection initiatives that are being used include installing bird roosts, propagating plants such as Kowhai and the rare creeper mimulus-repens for local use, putting about 8km of silt fencing in place to protect the marine habitat, recycling cleared vegetation for mulch and using specialist stormwater treatment devices.

Photo of shags: Brigitte Dunbar



Above: Aerial photo of the Whau River Bridge by Greg Kempthorne

Below: Many hands make light work, the team "stitching" the bridge on Saturday night



Bridge Stitch

Last Saturday evening the Causeway Alliance team connected the existing Whau River Bridge to the new bridge beside it. In what's affectionately called a bridge "stitch", it involves pouring concrete to connect the two structures. All three northwestern citybound lanes between Te Atatu and Rosebank needed to be closed. Vibrations from any passing traffic would have weakened the reinforcing bond into the concrete. Thank you to local residents for your patience during the closure.

The bridge stitch in numbers:

- 1.1m gap between the two bridges
- 2 hours to pour the concrete
- 3 teams each placing the concrete in 60m sections
- 11 hours for the concrete to reach sufficient strength
- 12 truckloads of concrete
- 180m bridge

The team are now constructing a new bridge on the opposite (southern) side of the Whau River Bridge. Once it's ready we will use a similar closure process to last weekend so that we can stitch those two bridges sections together.

Your questions answered

What will the final surface of the cycleway be?

The final surface of the cycleway will be asphalt in some places and concrete in others. At the moment there are a number of temporary cycleway diversions covered with a Grade 5 chipseal, which is a finer grade than Grade 3 road chip. The temporary surface diversions will be swept from time to time so any loose chip is kept to a minimum.

Why is the speed limit restricted to 80kph along the northwestern motorway?

The legal speed limit is currently 80kph along the construction zones for safety reasons and has been set after consultation with the NZ Police, the NZ Transport Agency, and in keeping with the Code of Practice for Temporary Traffic Management.

The construction areas along the northwestern motorway along with slower, heavy construction vehicles entering and leaving motorway traffic greatly increase the likelihood of driver distraction. In addition most of the lanes have been narrowed to give our teams work space to widen the motorway. There are no shoulders or safe stopping zones and many of the lane surfaces and line markings are temporary.

Safety Award Win



The Causeway Alliance recently won a NZ Transport Agency "GEM" award for Going the Extra Mile to create an innovative health and safety team culture. Our award entry covered the new safety ideas the team has implemented on the Causeway Upgrade Project to date including the stop/go gates on the cycleway, red and green safety lights on construction machinery and a design improvement to warratah rammers.

Updates from our neighbouring projects on SH16 and SH20

The Northwestern Upgrade on State Highway 16 and the Waterview Connection on State Highway 20 are completing what's called the Western Ring Route. The route will be an alternative to State Highway 1 linking Manukau, Auckland, Waitakere and the North Shore, improving travel time reliability and upgrading cycleway and pedestrian facilities. The Causeway Alliance and four other contracting teams are delivering the work for the NZ Transport Agency. The projects are due to be completed in early 2017 when the Waterview tunnels open.

St Lukes Upgrade Project

The team at St Lukes are widening the northwestern motorway from three to four lanes in each direction, improving the on-ramps and exits at St Lukes and putting in a new lane in each direction on the St Lukes Road over bridge. Works are due to be completed by the end of 2015.

If you are interested to read about project progress or to register to receive their e-newsletter, please contact Elise Miller on elise.miller@leicon.co.nz.

Waterview Connection

The Well-Connected Alliance is constructing twin 2.4km tunnels between Owairaka and Waterview. The tunnels are part of the new 5km, six-lane motorway link from the Great North Road interchange at Waterview to Maioro Street in Mt Roskill connecting the northwestern and southwestern motorways. The \$1.4bn Waterview Connection is due to open in 2017.

A big congratulations to Alice, the tunnel boring machine, that completed the first tunnel on Monday 29 September after spending the last 10 months underground. Early in 2015 Alice will begin the return trip to Owairaka, constructing the second tunnel as she goes.

Te Atatu Interchange Upgrade Project

This project is widening the five existing motorway onramps and exits at Te Atatu and improving access for vehicles, cyclists and pedestrians. It is also widening the northwestern motorway between the Te Atatu interchange and Henderson Creek and is due to be completed in December 2016.

The Te Atatu overbridge is made up of three separate structures, which will be raised independently in the coming months. The first part of the bridge will be raised in November and the remaining sections will be raised during the Christmas holiday period. The works will involve lane closures both on Te Atatu Rd and the northwestern motorway. Access to and from Te Atatu Peninsula will remain open at all times although will be reduced.

If you would like more information about the project or register to receive their e-newsletter, please contact Nettie Bird on nettie.bird@fultonhogan.com.

Lincoln Road Interchange Project

Current work is focused on improving SH16 between Henderson Creek and the Huruahu Stream on either side of Lincoln Road, as well as upgrading the nearby cycleway. The project is due to be completed next year.

More information

nzta.govt.nz/projects/sh16causeway

info@sh16causeway.co.nz

0800 444 449 (state highways info line)