

Waitapu landscape plan

In our previous December 2021 update, Manawhenua ki Mohua and Waka Kotahi NZ Transport Agency advised that we would develop a landscape plan for Waitapu. This plan provides the basis for all future restoration and protection works associated with this special site.

We are now ready to share the draft landscape plan with you and seek your feedback.

How was the landscape plan developed?

The landscape plan takes into consideration community input, and focuses on:

- Creating separate areas for car and RV parking, boat access and boat trailer parking, native planting, recreation, and artwork/cultural interpretation.
- Minimising flood damage to the site by changing the current layout and undertaking strategic plantings and drainage measures.
- Minimising resources and costs by utilising existing materials on site.
- New planting will be native, specific to the site, sourced from Golden Bay and able to cope with regular flooding over part of the site. Over time, the existing exotic trees will be removed.

The landscape plan does not include every detail. Some of the materials and plants are still being sourced and the artwork and cultural interpretation are yet to be designed.

We have recently completed new signage for the site, which has helped deter overnight camping. We will continue to monitor the site to see if signage requires further changes.

When will the landscape plan be rolled out?

Once we have settled on the landscape plan, changes to the site will be staggered, as funding and materials become available. We also need to work around the planting seasons, so you may see some changes over the next few months, including initial minor earthworks to allow for future landscaping.

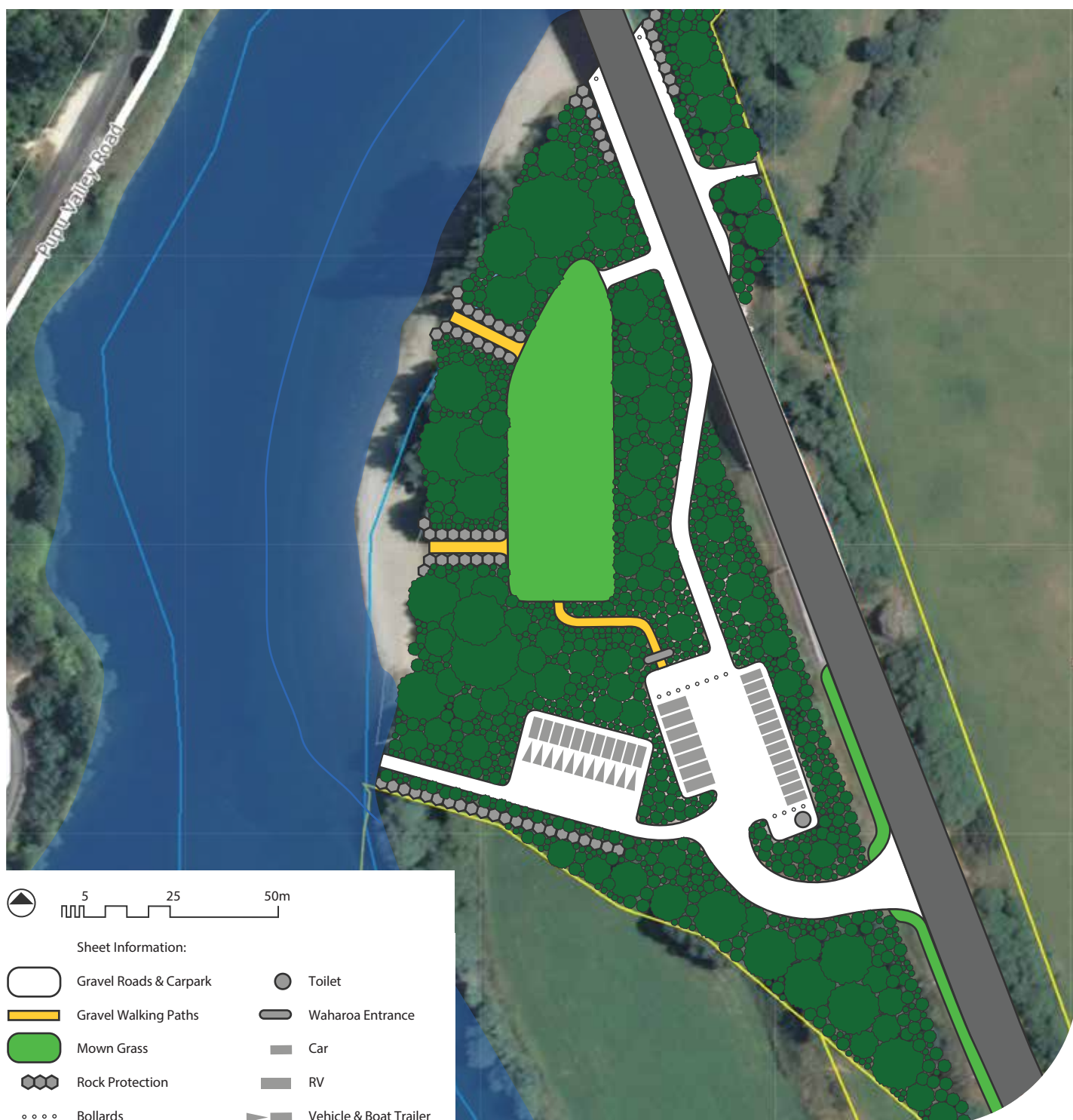
We are looking forward to involving the community in the planting and beautification of the site. The first such opportunity could be around Matariki – to register your interest, please email waitapubridge@nzta.govt.nz

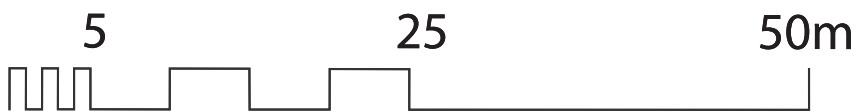
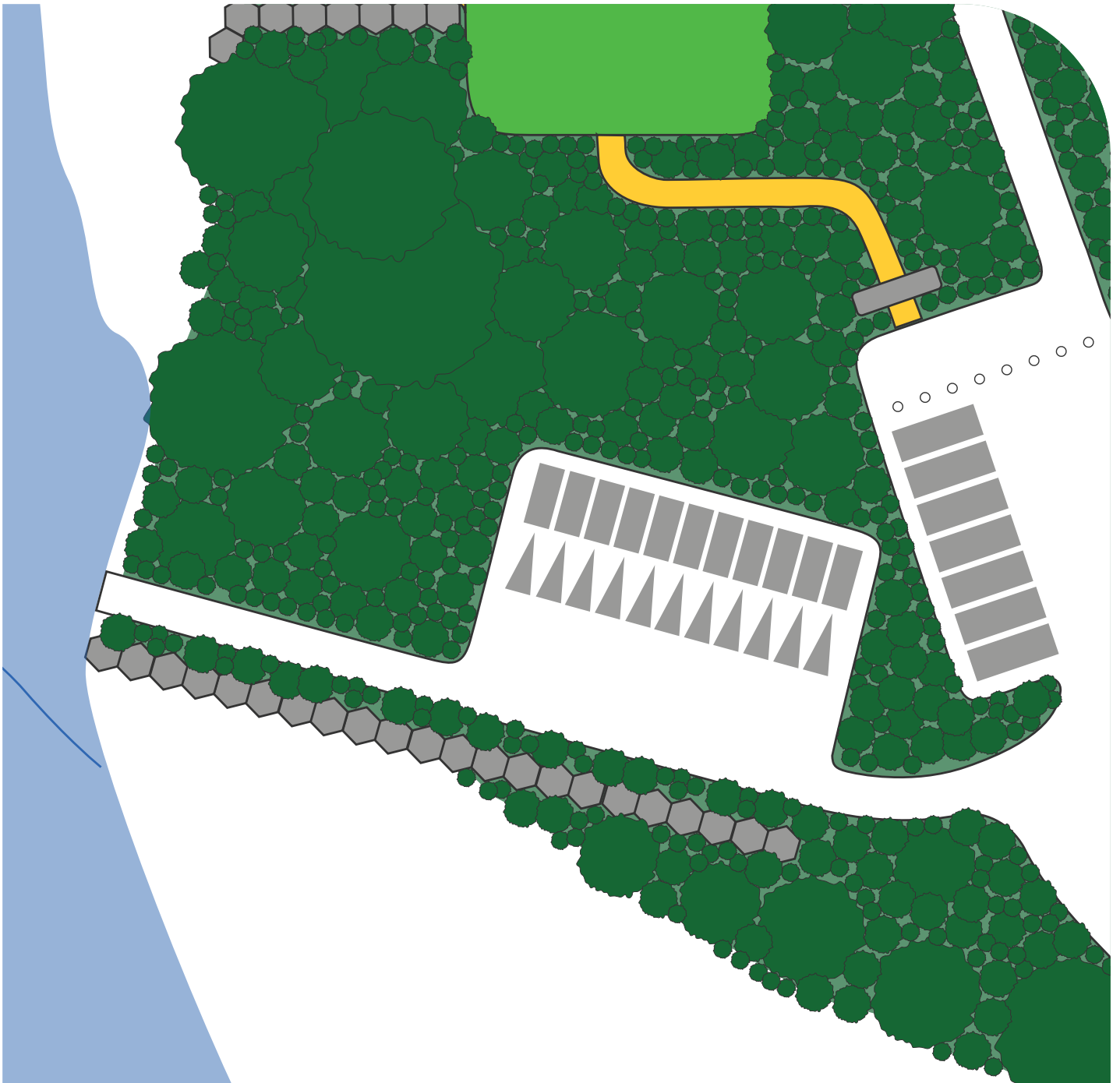


Manawhenua
Ki Mohua

Waitapu development

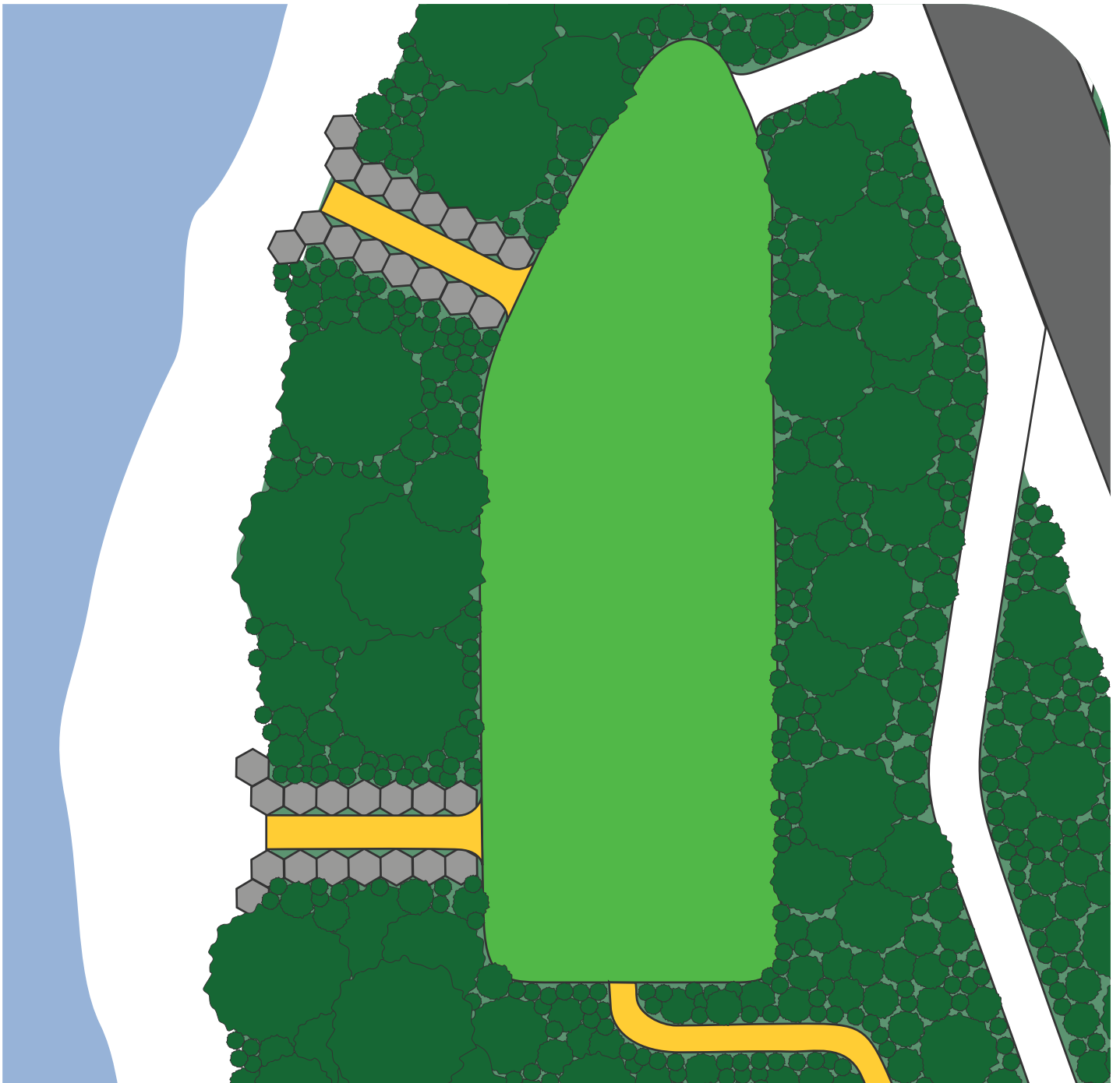
- The main carpark remains in the current location to minimise development costs and resources.
- The carpark allows for 13 standard vehicles and 6 larger RVs.
- The carpark is easily visible as visitors enter via the access road.
- Parking spaces will be defined by parking guides to help visitors park vehicles according to the proposed layout.
- Bollards will be placed at either side of the carpark, near the bridge maintenance and inspection road and by the toilet area, to ensure safety of people near manoeuvring vehicles. The bollards also ensure people are not driving down towards the bridge and parking across the toilet facilities.
- A single bollard by the bridge access track will be removable by authorised personnel for management and maintenance purposes.
- From the carpark visitors can access:
 - The reserve via a waharoa (entranceway) and walking path
 - The toilet, which is retained in its current location to reduce costs
 - The bridge maintenance & inspection road.





Boat trailer/over-flow carpark

- The boat trailer / over-flow carpark is positioned on the existing raised location.
- Additional fill may be required to raise the entire carpark to offer flood protection to the reserve.
- The carpark offers boat trailer parking with ample manoeuvring for up to 11 individual vehicles and trailers.
- The boat ramp is repositioned into a location that prevents vehicles driving on the riverbed at full tide.
- The raised carpark and boat ramp are protected by the rocks which are already there.
- The boat ramp carpark entrance is less obvious than the main carpark ensuring availability for boat trailer parking.
- There is existing signage advising 'keep boat ramp clear' which will be relocated.



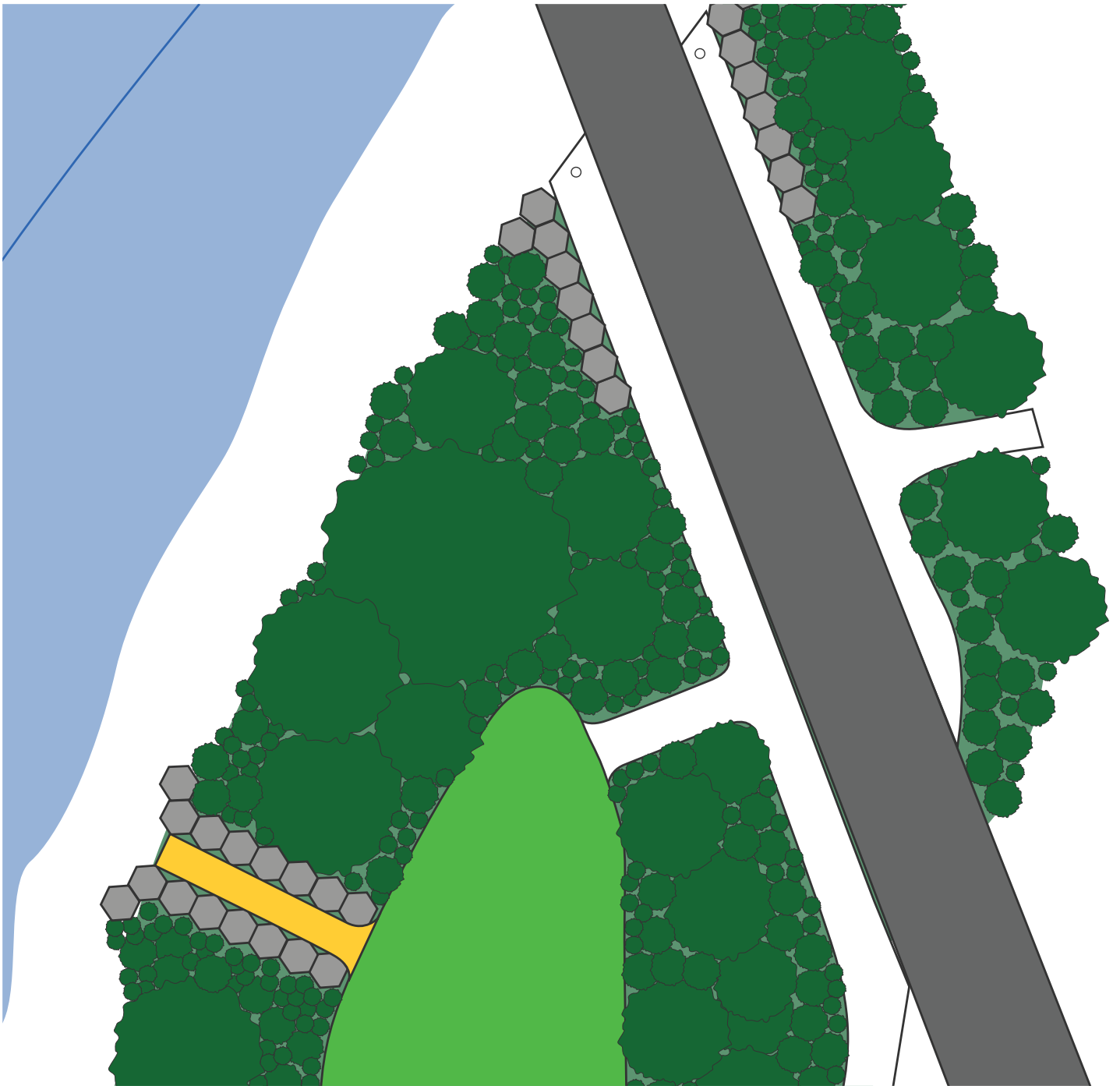
Reserve

The mown reserve:

- is in a location with existing topsoil.
- is shaped to ensure it is easy to mow.
- uses protection from the existing planting and landscape features.
- will slope towards the river to prevent water pooling.
- can be accessed by commercial lawn mowers from the bridge maintenance road.

The riverbed access points:

- are accessed by foot from the mown reserve.
- are protected by repositioned rocks.
- function as drains when the river floods.



Bridge maintenance road

- provides access to the riverbed but is protected by public vehicle use by removable bollards.
- offers access to the northern stopbank.
- provides access for people to walk under the bridge..

You can email your feedback to waitapubridge@nzta.govt.nz

Feedback closes on **Friday 10 June 2022**