



Appendix C

- C1 – Existing Records and Source Information
- C2 – Site Photos



This page has been intentionally left blank.



Appendix C1

Existing Records and Source Information

- Existing stormwater design, construction and as-built drawings:
 - North Shore Drainage Board – Rosedale Road Treatment Plant Drawing 237-1 and 237-2 (Watercare Ref: DTR0S-53-C-026), dated 1971.
 - State Highway 1 Auckland-Waiwera Motorway R.D.2A., Tristram Avenue – Albany Interchange, Sunset Road – Albany Expressway.
 - Drainage detail plan 1/95/18/7104 Sheet 60 to 66 (RAB – As-Built), dated 1981-1982.
 - State Highway 1 Highway Realignment Okura River to Rosedale Road Construction and Pavement Details Sector A1 (Alpurt A1)
 - Earthworks and Drainage Drawings 1/23/83/7104 Sheet 14 to 20, dated August 1998 to December 1999 (Revision Varies – All Construction).
 - Treatment Pond Weir Data Table & Details 1/23/83/7104 Sheet 309 (R2 – Construction), dated 24 February 1999.
 - Minor culverts setting out data 1/23/83/7104 Sheet 169 (R3 – Construction), dated March 1998.
 - State Highway 1 North Busway Project
 - Constellation Bus Station Drainage As-Built Plan Sheet 1 to 4 A083-DR01 to DR03 (Rev 1), dated November 2005
 - State Highway 1 Albany Ramps
 - Stormwater Drainage Layout ASR/SW-01 to 05 (Rev A – For Construction), dated 18 January 2015.
 - Oteha Valley Road Quality Pond Modifications ASR/SW-12 (Rev A – For Construction), dated 18 January 2005.
 - McClymonts Road North Quality Pond Modifications ASR/SW-13 (Rev A – For Construction), dated 18 January 2005.
 - State Highway 18 Upper Harbour Corridor Greenhithe Section
 - Earthworks Drainage and Pavement Construction 1/67A/26/7104 Sheet 1010 to 1012 (RAB – As-built), dated 25 November 2009.
 - State Highway 1 Travel Demand Management
 - Upper Harbour Northbound Off-Ramp Stormwater Treatment Device As-Built, dated 5th February 2010.
 - State Highway 1 UHH to Greville Road Northbound
 - Drainage Plans Sheet 1 to 11 3817032-C-191 to 201 (Rev AB-1, As-built), dated 4 August 2015.
 - Drainage details and Greville Interchange Drainage Plan 3817032-C-202 to 208 (Rev AB-1, As-built), dated 4 August 2015.
- Technical stormwater reports:
 - State Highway 1: Albany to Puhoi Realignment, Sectors A & B1 Stormwater Treatment Devices, Maintenance and Operation Guidelines, Report No. 010702, dated July 2001
 - North Shore Busway Project, Northern Sector, Albany Station On- and Off-Ramps, Stormwater Quality Treatment – Operations and Management, Report Number N04700, dated October 2004
 - State Highway 1 Upper Harbour Highway to Greville Northbound Improvements Design Report, dated 21 June 2013



- State Highway 1 Upper Harbour Highway to Greville Northbound Improvements: Response to Auckland Council Section 92 Letter, dated 26 July 2013
- Oteha Valley Catchment Stormwater Modelling – Model Build and System Performance Report, Auckland Council, dated July 2013
- Lucas Creek Catchment Stormwater Modelling – Model Build and System Performance Report, North Shore City Council, dated September 2009
- Oteha Valley Catchment Management Plan, North Shore City Council, dated January 2001
- Lucas Creek Stormwater Catchment Management Plan, North Shore City Council, dated March 2010
- Existing resource consents that apply to the Project area and relate to stormwater management

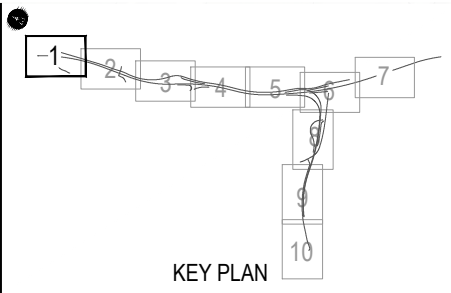


Appendix C2 Site Photos

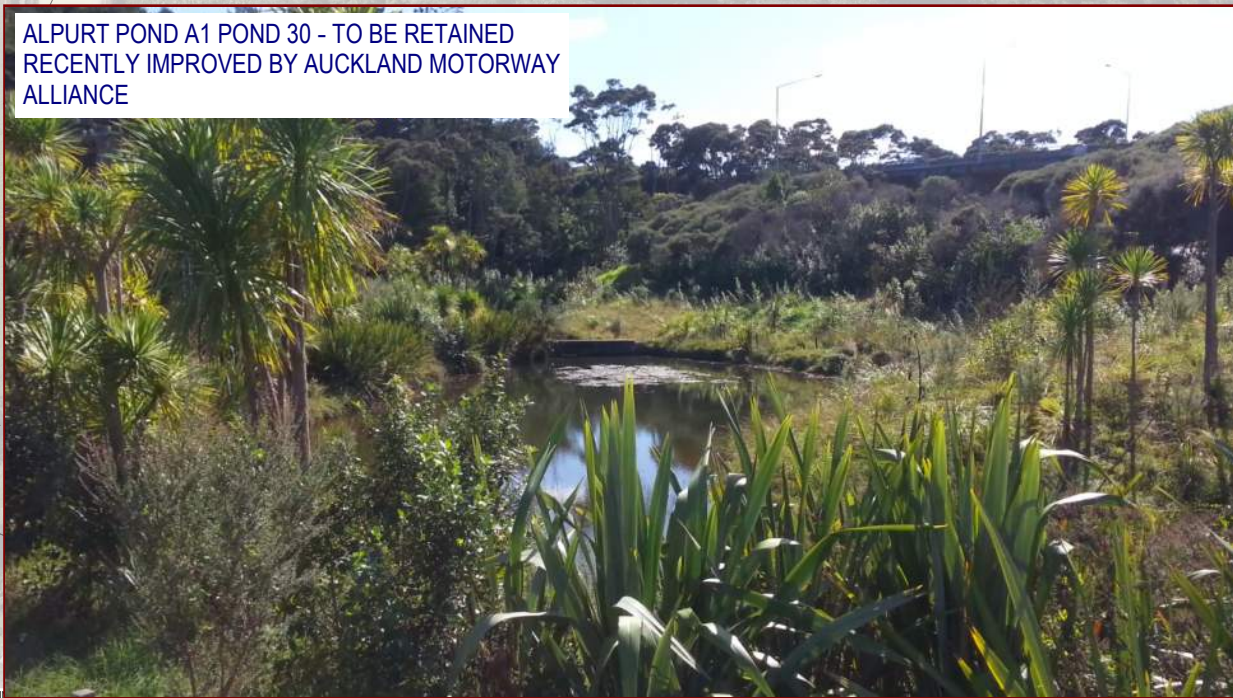


This page has been intentionally left blank.

ALPURT POND A1 POND 29 - TO BE RETAINED



ALPURT POND A1 POND 30 - TO BE RETAINED
RECENTLY IMPROVED BY AUCKLAND MOTORWAY ALLIANCE



CONTAINS 2016 AERIAL IMAGERY SOURCED FROM NZ TRANSPORT AGENCY UNDER CREATIVE COMMONS 3.0 NEW ZEALAND (BY)

CONTAINS 2016 AERIAL IMAGERY SOURCED FROM NZ TRANSPORT AGENCY UNDER CREATIVE COMMONS 3.0 NEW ZEALAND (BY)

CLIENT



STORMWATER SITE VISIT PHOTOS

15 APRIL 2016 & 13 JULY 2016

TAKEN BY DAVID HUGHES, MATTHEW YU & TALLULAH KAEGI



ALPURT A1 POND 30 - TO BE REMOVED



CONTAINS 2016 AERIAL IMAGERY SOURCED FROM NZ TRANSPORT AGENCY UNDER CREATIVE COMMONS 3.0 NEW ZEALAND (BY)

CONTAINS 2016 AERIAL IMAGERY SOURCED FROM NZ TRANSPORT AGENCY UNDER CREATIVE COMMONS 3.0 NEW ZEALAND (BY)

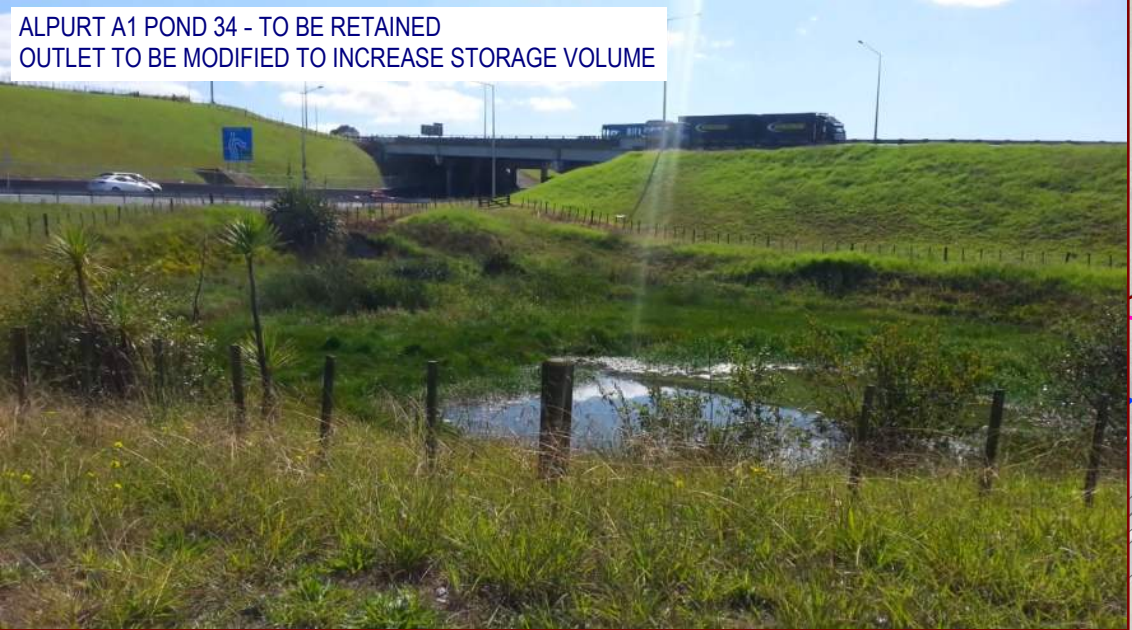
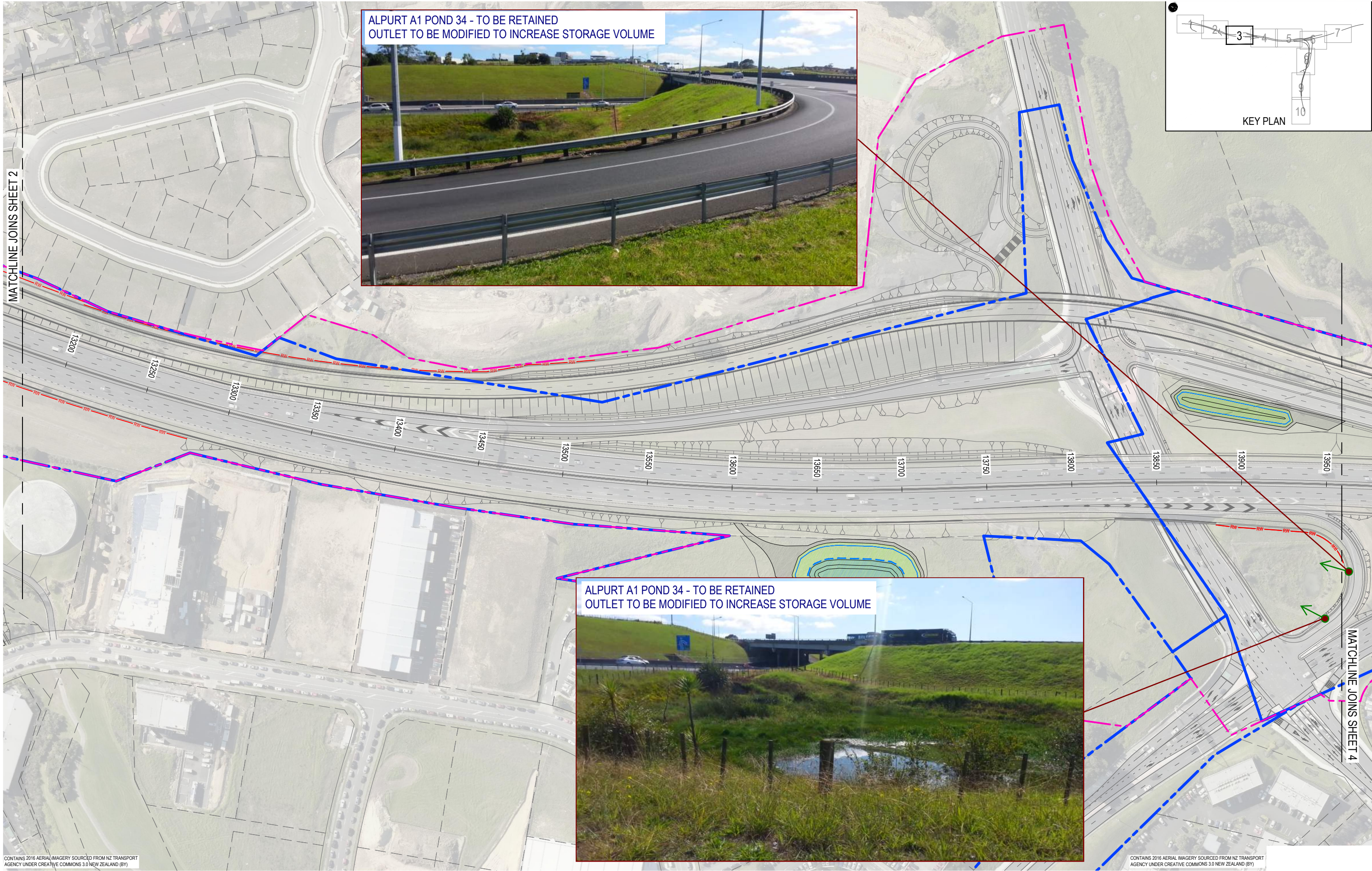
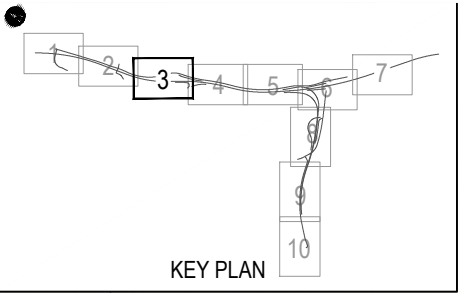
CLIENT



STORMWATER SITE VISIT PHOTOS

15 APRIL 2016 & 13 JULY 2016

TAKEN BY DAVID HUGHES, MATTHEW YU & TALLULAH KAEGI



CONTAINS 2016 AERIAL IMAGERY SOURCED FROM NZ TRANSPORT AGENCY UNDER CREATIVE COMMONS 3.0 NEW ZEALAND (BY)

CONTAINS 2016 AERIAL IMAGERY SOURCED FROM NZ TRANSPORT AGENCY UNDER CREATIVE COMMONS 3.0 NEW ZEALAND (BY)

CLIENT



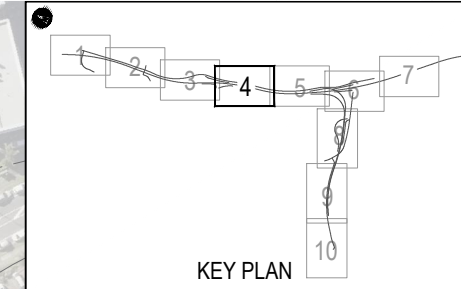
STORMWATER SITE VISIT PHOTOS
 15 APRIL 2016 & 13 JULY 2016
 TAKEN BY DAVID HUGHES, MATTHEW YU & TALLULAH KAEGI

ALPURT A1 POND 34 - TO BE RETAINED OUTLET TO BE MODIFIED TO INCREASE STORAGE VOLUME

ALPURT A1 POND 35 - TO BE RETAINED
OUTLET TO BE MODIFIED TO INCREASE STORAGE VOLUME



ALPURT A1 POND 35 - TO BE RETAINED
OUTLET TO BE MODIFIED TO INCREASE STORAGE VOLUME



CU-EX-06 OUTFALL - TO BE RETAINED
NO WORKS PROPOSED



CONTAINS 2016 AERIAL IMAGERY, SOURCED FROM NZ TRANSPORT AGENCY UNDER CREATIVE COMMONS 3.0 NEW ZEALAND (BY)

CLIENT

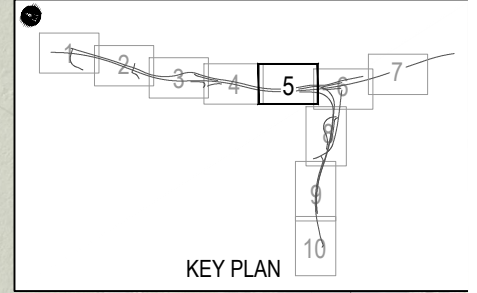
MORO POND - ARTIFICIAL WATERCOURSE TO BE PIPED



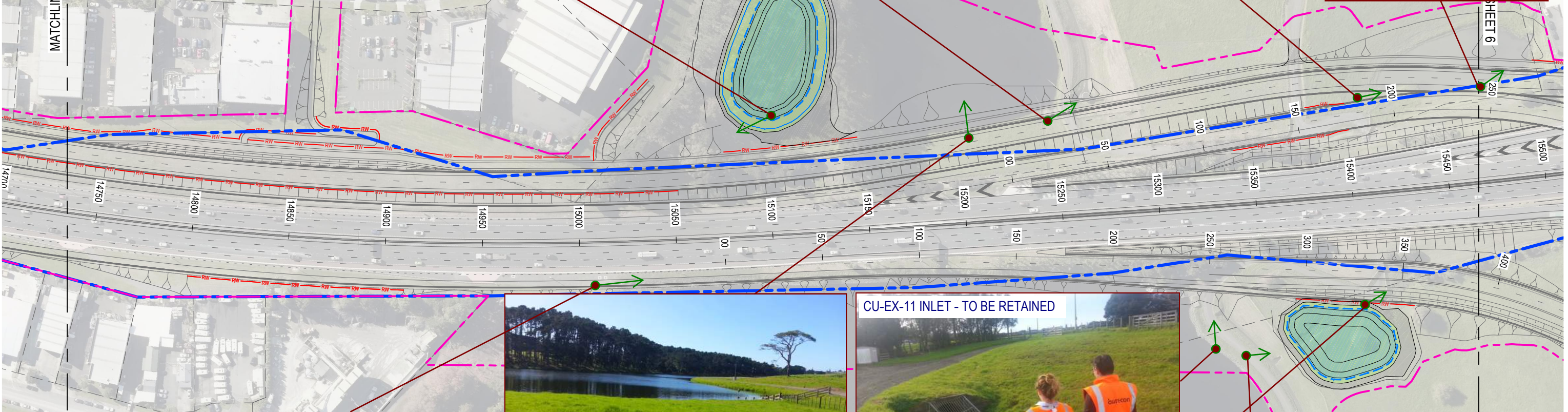
BELLMOUTH STRUCTURE - TO BE RELOCATED



ARC REFUSE POND - TO BE REMOVED



ARC REFUSE POND - INLET & OUTLET



STORMFILTER AND DETENTION TANK - TO BE REMOVED



WATERCARE POND 2



CU-EX-11 INLET - TO BE RETAINED



CU-EX-12 OUTLET - CULVERT TO BE EXTENDED



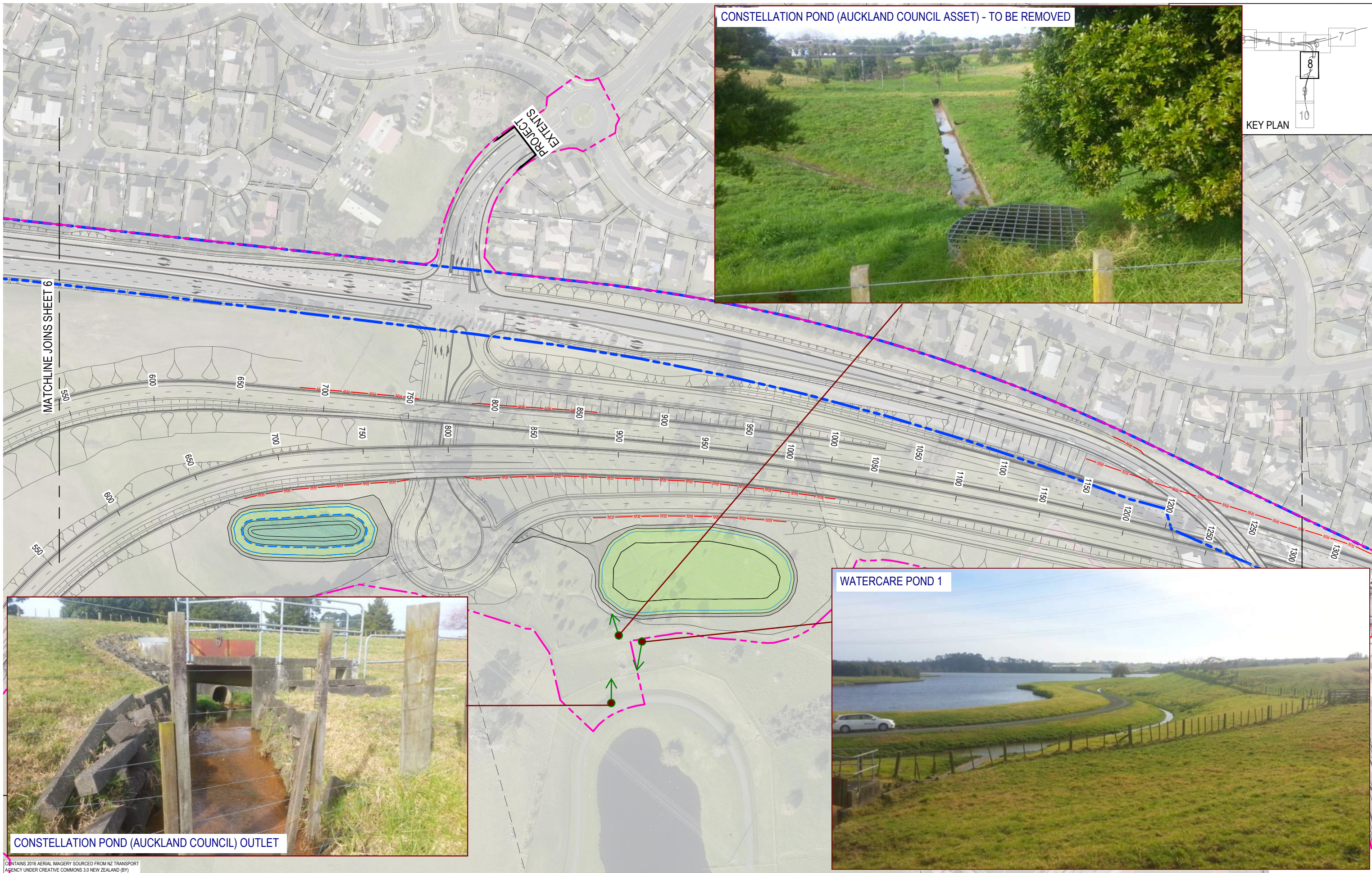
NEW OUTLET LOCATION OF EXTENDED CU-EX-12

CLIENT



STORMWATER SITE VISIT PHOTOS

15 APRIL 2016 & 13 JULY 2016
TAKEN BY DAVID HUGHES, MATTHEW YU & TALLULAH KAEGI



CONTAINS 2016 AERIAL IMAGERY SOURCED FROM NZ TRANSPORT AGENCY UNDER CREATIVE COMMONS 3.0 NEW ZEALAND (BY)

CLIENT



STORMWATER SITE VISIT PHOTOS

15 APRIL 2016 & 13 JULY 2016

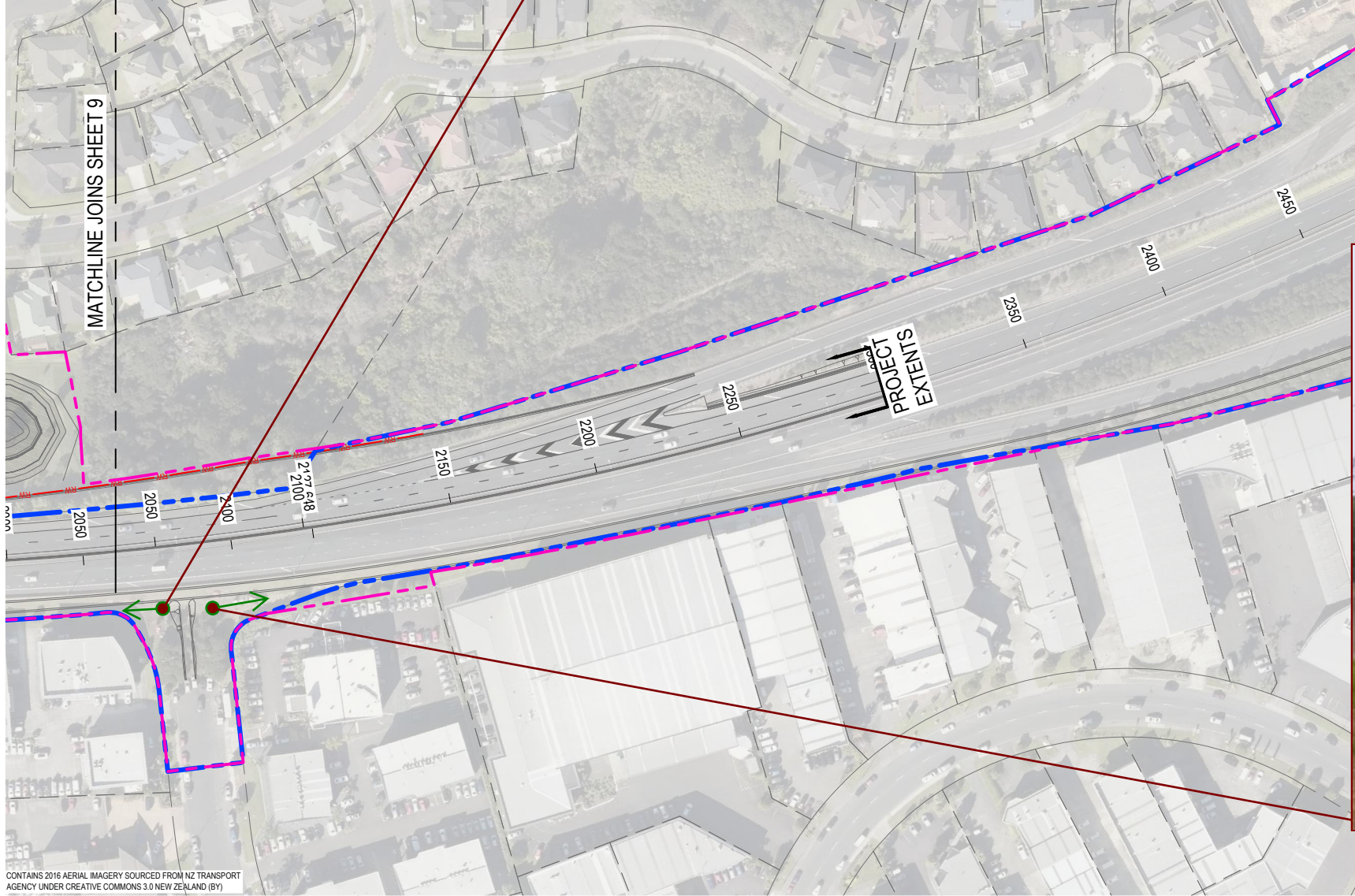
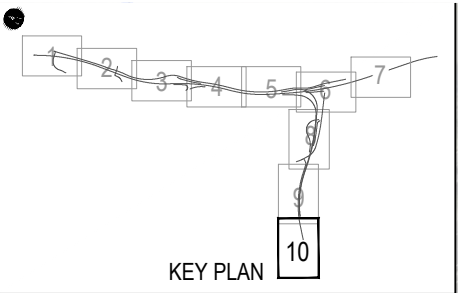
TAKEN BY DAVID HUGHES, MATTHEW YU & TALLULAH KAEGI



CONTAINS 2016 AERIAL IMAGERY SOURCED FROM NZ TRANSPORT AGENCY UNDER CREATIVE COMMONS 3.0 NEW ZEALAND (BY-NC-ND)

CLIENT

PROPOSED SH18 SUP - EXISTING CHANNEL TO BE REPLACED WITH CONCRETE CUT-OFF CHANNEL



PROPOSED SH18 SUP - EXISTING CHANNEL TO BE REPLACED WITH CONCRETE CUT-OFF CHANNEL



CONTAINS 2016 AERIAL IMAGERY SOURCED FROM NZ TRANSPORT AGENCY UNDER CREATIVE COMMONS 3.0 NEW ZEALAND (BY)

CLIENT



STORMWATER SITE VISIT PHOTOS
15 APRIL 2016 & 13 JULY 2016
TAKEN BY DAVID HUGHES, MATTHEW YU & TALLULAH KAEGI