



NZ TRANSPORT AGENCY
WAKA KOTAHI

Roads of national significance



Completing the

Western Ring Route

Waterview Connection Application

Te Atatu Public Presentation
Wednesday 15th September 2010

Welcome

Waterview Connection Application

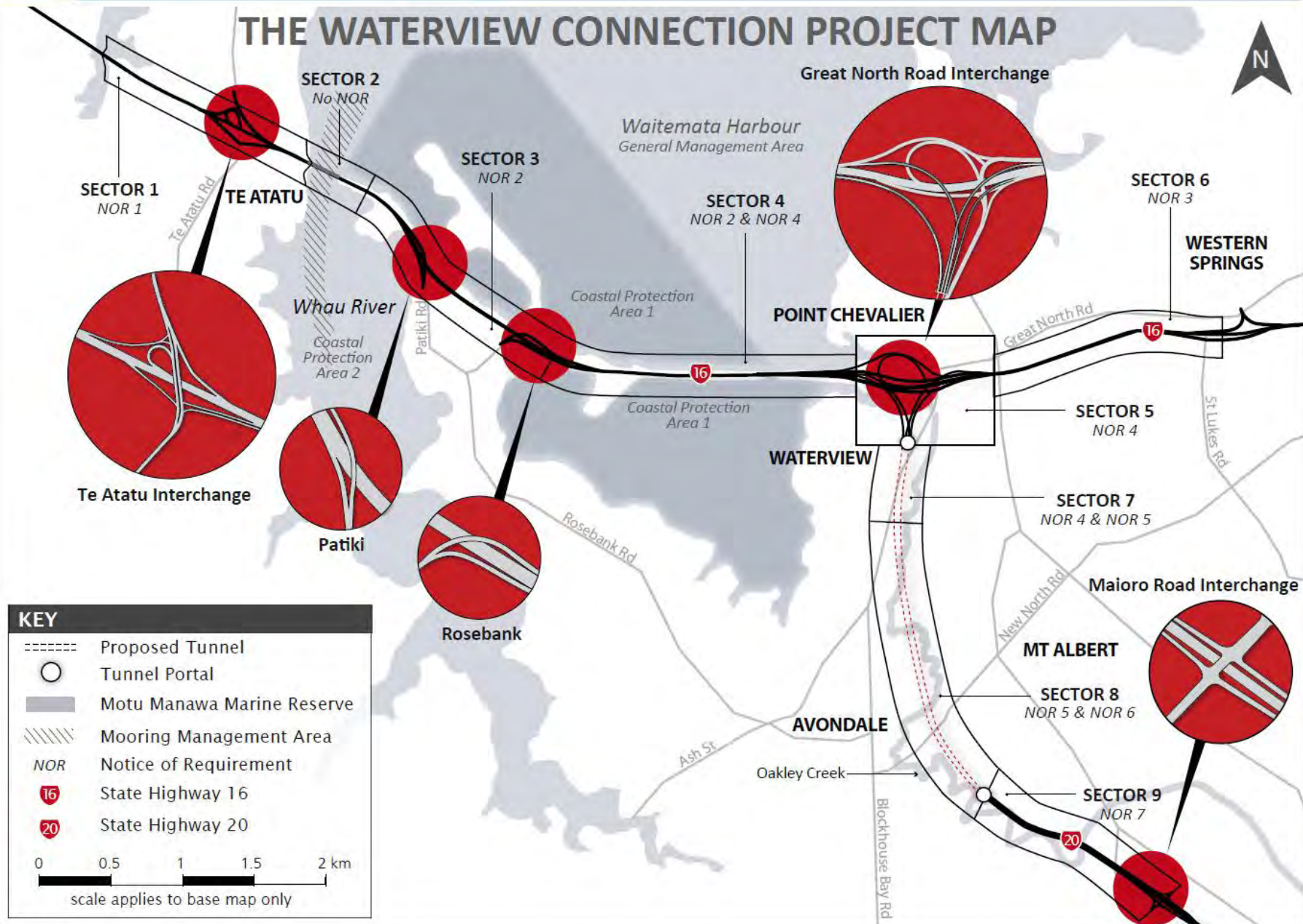
- Lodged with the EPA 20th August 2010
- Recommendation for BOI by Ministers 3rd September
- EPA to publicly notify (mid / late September)
- Submission Period through (mid / late October)

View all of the Application on website:

www.waterviewconnection.co.nz



THE WATERVIEW CONNECTION PROJECT MAP



KEY

- Proposed Tunnel
- Tunnel Portal
- Motu Manawa Marine Reserve
- ▨ Mooring Management Area
- NOR Notice of Requirement
- 16 State Highway 16
- 20 State Highway 20

0 0.5 1 1.5 2 km
scale applies to base map only

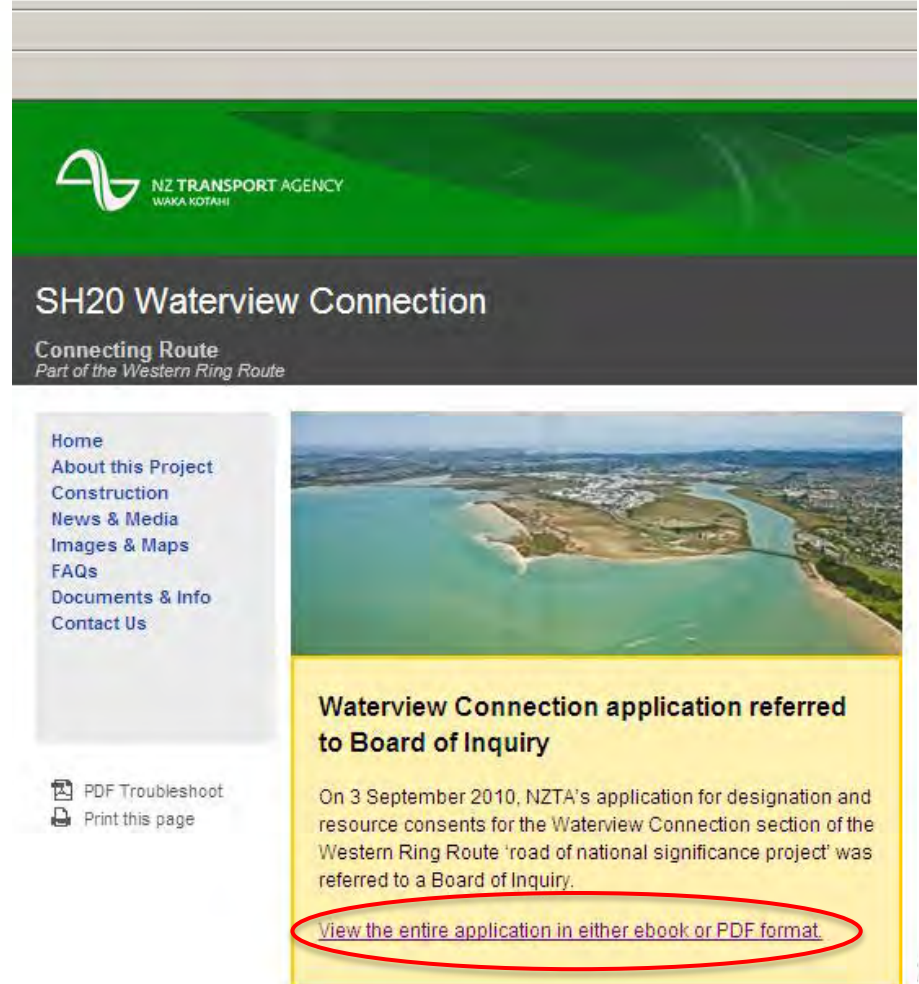
Application Overview

Notices of Requirement

NOR 1 applies to this area

54 Resource Consents

www.waterviewconnection.co.nz



The screenshot shows the website for the SH20 Waterview Connection project. At the top, there is a green header with the NZ Transport Agency logo and the text "NZ TRANSPORT AGENCY WAKA KOTAHI". Below this is a dark grey banner with the title "SH20 Waterview Connection" and the subtitle "Connecting Route Part of the Western Ring Route". A navigation menu on the left lists: Home, About this Project, Construction, News & Media, Images & Maps, FAQs, Documents & Info, and Contact Us. Below the menu are links for "PDF Troubleshoot" and "Print this page". The main content area features an aerial photograph of the project site. Below the photo, a yellow box contains the text: "Waterview Connection application referred to Board of Inquiry". Underneath this, it states: "On 3 September 2010, NZTA's application for designation and resource consents for the Waterview Connection section of the Western Ring Route 'road of national significance project' was referred to a Board of Inquiry." At the bottom of the yellow box, a red oval highlights the text: "View the entire application in either ebook or PDF format."



Waterview Connection

EPA Lodgement Documents and Supporting Information

Wednesday, September 08, 2010



Home

Summary

Assessment of Effects

Plans and Drawings

Technical Reports

Applications

Affected Properties



Home



Login

Welcome

The NZTA has applied for designation and resource consents for the Waterview Connection section of the Western Ring Route Road of national Significance project.

This application is under the new national consenting process through the Environmental Protection Authority(EPA). It is the first roading project to use this new one step process for projects of national significance.

The NZTA application seeks approval to construct 5km of new state highway connecting SH20 with SH16. Of this 2km will be constructed as 2 x 3-lane tunnels. In addition, capacity improvement works to SH16 will be carried out, including widening and raising the causeway, adding an additional lane and bus shoulder between Henderson Creek and St Lukes interchange and additional pedestrian and cycle ways. The Waterview Connection is the 'missing link' that completes the Western Ring Route'.

On 3 September 2010, NZTA's application was referred to a Board of Inquiry. The timetable for this process will be published by the EPA.

This is the largest and most complex roading project to be processed under the Resource Management Act. The NZTA is committed to continuing to work with the public and affected parties as the project develops. This site contains all of the documents that make up the application in both ebook and pdf format.

Once completed, the Western Ring Route will provide a strategic 48km route through Auckland that reduces dependency on SH1 and the Auckland Harbour Bridge. It improves connectivity between the west of Auckland and the south and between the north and the southern isthmus. It also provides a motorway link from the airport to the Auckland City centre. A completed Western Ring Route will stimulate economic growth within the region.

For questions on how to make a submission or anything related to the EPA process please visit www.epa.govt.nz

Summary

Provides a summary of the application and a description of the project and conclusions of the Assessment of Environmental Effects. This is a good place to start for an overview of the project.

[Click to view Summary](#)

Assessment of Effects

Here you can find out more about the potential effects of the project on the environment and community. This includes a description about the project, and assessment of the actual and potential effects, the alternatives considered, an assessment of the planning documents and the measures identified to avoid, remedy or mitigate the effects.

[Click to view Assessment of Effects](#)

Plans and Drawings



Waterview Connection

EPA Lodgement Documents and Supporting Information

Thursday, September 09, 2010

- Home
- Summary
- Assessment of Effects
- Plans and Drawings
- Technical Reports
- Applications
- Affected Properties



Summary

Login

Overview

Ebooks are great for fast and easy use and the quality is great for review purposes. To view the document in an ebook simply click on the ebook link. If you require the document in high quality for printing or for viewing, click on the PDF link for a higher resolution.

1. Overview

ebook PDF

Overview - Windows Internet Explorer provided by New Zealand Transport Agency

http://waterviewapplication.nzta.govt.nz/eBooks/Overview/

File Edit View Favorites Tools Help

Overview

Table Of Contents

- Overview
- Notice of Requirements 1
- Notice of Requirements 2
- Notice of Requirements 3
- Notice of Requirements 4
- Notice of Requirements 5
- Notice of Requirements 6
- Notice of Requirements 7
- Appendix B Consent Application Forms
- Appendix C EPA Application Forms
- Appendix D Order in Council

Overview | pages: 2-3 / 320

Overview, Notices of Requirements and Consent Applications
Waterview Connection

Overview

Table of Contents

- Introduction 3
- The Waterview Connection Project 4
- Project Objectives 6
- Regional and Economic Context 9
- Documentation Framework 12
- Notices of Requirement 12
- Resource Consents 19
- Assessment of Alternatives 20
- Consultation 23
- Assessment of Effects 25
- Summary of Mitigation and Monitoring 32
- Other Statutory Requirements 33

Appendices

Appendix A: Notices of Requirement

- NOR 1: Alteration to Designation NZTA1 (Waikareke City District Plan)
- NOR 2: Alteration to Designation A01-07 (Auckland City District Plan) (Causeway)
- NOR 3: Alteration to Designation A01-07 (Auckland City District Plan) (St Lukes Interchange)
- NOR 4: New Designation (Auckland City District Plan) (SH20 / SH16 and Great North Road Underpass)
- NOR 5: New Designation (Auckland City District Plan) (Substrata Designation, SH20 Tunnels)
- NOR 6: New Designation (Auckland City District Plan) (Emergency Exhaust SH20)
- NOR 7: New Designation (Auckland City District Plan) (SH20)

Status: Final Assessment of Environmental Effects August 2019
Document Reference No. 20.1.11-3-8-N-1024 Page 0.1

Appendix B: Resource Consent Applications

- Form 9 - Application for Resource Consent (Section 88 of the Resource Management Act)
- Form 9 - Application for Resource Consent (Section 89(2) of the Resource Management Act)
- Form 9 - Application for Resource Consent (Section 89(2) of the Resource Management Act)
- Consent Form A
- Form A - General Information and Contact Details
- Land Use Consents
- Form B5 - Land Disturbing Activities - Sediment Control
- Form B8 - Activities in, on, under or over the Beds of Lakes, Rivers and Streams
- Discharge Permits
- Form B7 - Diversion and Discharge of Stormwater
- Form B10 - Discharge Contaminants into Land or to Water
- Form B11 - Discharge Contaminants into Air
- Water Permits
- Form B2 - Take, Use or Divert of Groundwater
- Coastal Permits
- Form B14 - Coastal Activities

Appendix C: EPA Applications

- Notice of Requirement (Designation) Form
- Resource Consent Form

Appendix D: Order in Council

Status: Final Assessment of Environmental Effects August 2019
Document Reference No. 20.1.11-3-8-N-1024 Page 0.2

Overview - Windows Internet Explorer provided by New Zealand Transport Agency

http://waterviewapplication.nzta.govt.nz/eBooks/Overview/

File Edit View Favorites Tools Help

Overview

Search

Search Results

alan wood

Pages found: 72

- p.7 ...ath great north road through to the alan wood reserve (sector 8); from the alan...
- p.18 ...signation - sector 9 - sh20 through alan wood this is a surface designation req...
- p.20 ...anting, open space restoration (for alan wood reserve area), pedestrian / cycle ...
- p.31 ...in a southerly direction through to alan wood reserve, passing beneath avondale ...
- p.99 ...t north road in the north to within alan wood reserve in the south (nor 5). this ...
- p.100 ...road through to and emerging in the alan wood reserve area. the works are the su...
- p.130 ...1999 (district plan) for works from alan wood reserve, adjacent to stewart road ...
- p.134 ...road, the project alignment follows alan wood reserve to the southern tunnel por...
- p.118 ...wood, marina ann thorpe 49 hendon ave 697 177 115 177 25 y y 17.13 4926756 lot 3 dp
- p.144 ...wood, marina ann thorpe 49 hendon ave 697 177 115 177 25 y y 17.13 4926756 lot 3 dp
- p.4 ...project undertaken to date in new zealand (covering some 13.2km of existing and ...
- p.9 ...s the nz transport agency the new zealand transport agency's objective is define...

Overview | pages: 6-7 / 320

alan wood

Overview, Notices of Requirements and Consent Applications
Waterview Connection

- Works on approximately 8.2km of SH16 to improve the capacity and resilience of this corridor (providing an additional traffic lane in each direction between Henderson Creek and St Lukes Interchange);
- Approximately 1.5km of new pedestrian / cycle way along the SH20 corridor (providing a continuous off-line pedestrian / cycle way along those sections of SH20 where the carriageway is at surface);
- Approximately 1km additional pedestrian / cycle way and upgrades to the existing Northwestern Cycleway (providing a continuous off-line pedestrian / cycle way between Henderson Creek and Great North Road Interchange);
- Approximately 4.2km of additional Quality Transport Network (QTN) on SH16 (bus shoulder) (providing a total 9km of QTN between Henderson Creek and St Lukes Interchange).

The Project has been described and assessed in geographic Sectors 1- 9, which are depicted in Figure 2. In summary, the Project proposes the following (within the Sectors identified):

Between Te Atatu and St Lukes Interchanges the following key elements of work will be undertaken on SH16

- Significant improvements and reconfiguration of the Te Atatu Interchange to accommodate additional lanes and to provide a shoulder for bus priority and other High Occupancy Vehicles (HOVs) (Sector 1);
- A shared use cycle and pedestrian way running parallel to the motorway from Te Atatu (Henderson Creek) to the Great North Road Interchange (Sectors 1 through 5);
- Enlargement of the existing Whau River Bridge to accommodate additional lanes and a separate dedicated cycle/pedestrian bridge (Sector 2);
- Reconfiguration of the existing Rosebank on and off ramps to improve traffic merging on and off these ramps (Sectors 3 and 4);
- One additional lane (in each direction) between the Te Atatu and Rosebank Interchanges to provide four lanes east and westbound and a bus shoulder in each direction (Sectors 1 to 4);
- Two additional westbound lanes between Great North Road Interchange and Rosebank Road Interchange to create a total of five westbound lanes plus a dedicated bus shoulder (Sectors 3 and 4);
- One additional eastbound lane between Rosebank Road Interchange and Great North Road Interchange, to create a total of four eastbound lanes plus a dedicated bus shoulder (Sectors 3 and 4);
- Replacement of the grade-separated cycle/pedestrian bridge in the Patiki Interchange (Sector 3);
- Widening of the existing Causeway and Causeway Bridge to accommodate additional lanes and a separate cycle/pedestrian bridge (Sector 4);
- The existing causeway between Rosebank Peninsula and the Great North Road Interchange will be enlarged by additional reclamation (Sector 4);
- In conjunction with the reclamation, the causeway height will be increased to protect the State highway against inundation and to "future proof" it against predicted sea level rise in the future (Sector 4); and
- Additional lanes, a cycleway and a bus priority lane will be provided between the Great North Road Interchange and the St Lukes Interchange (Sector 6).

Status Final Assessment of Environmental Effects August 2010
Document Reference No. 20.1.11-3-4-N-1024 Page 0.4

Overview, Notices of Requirements and Consent Applications
Waterview Connection

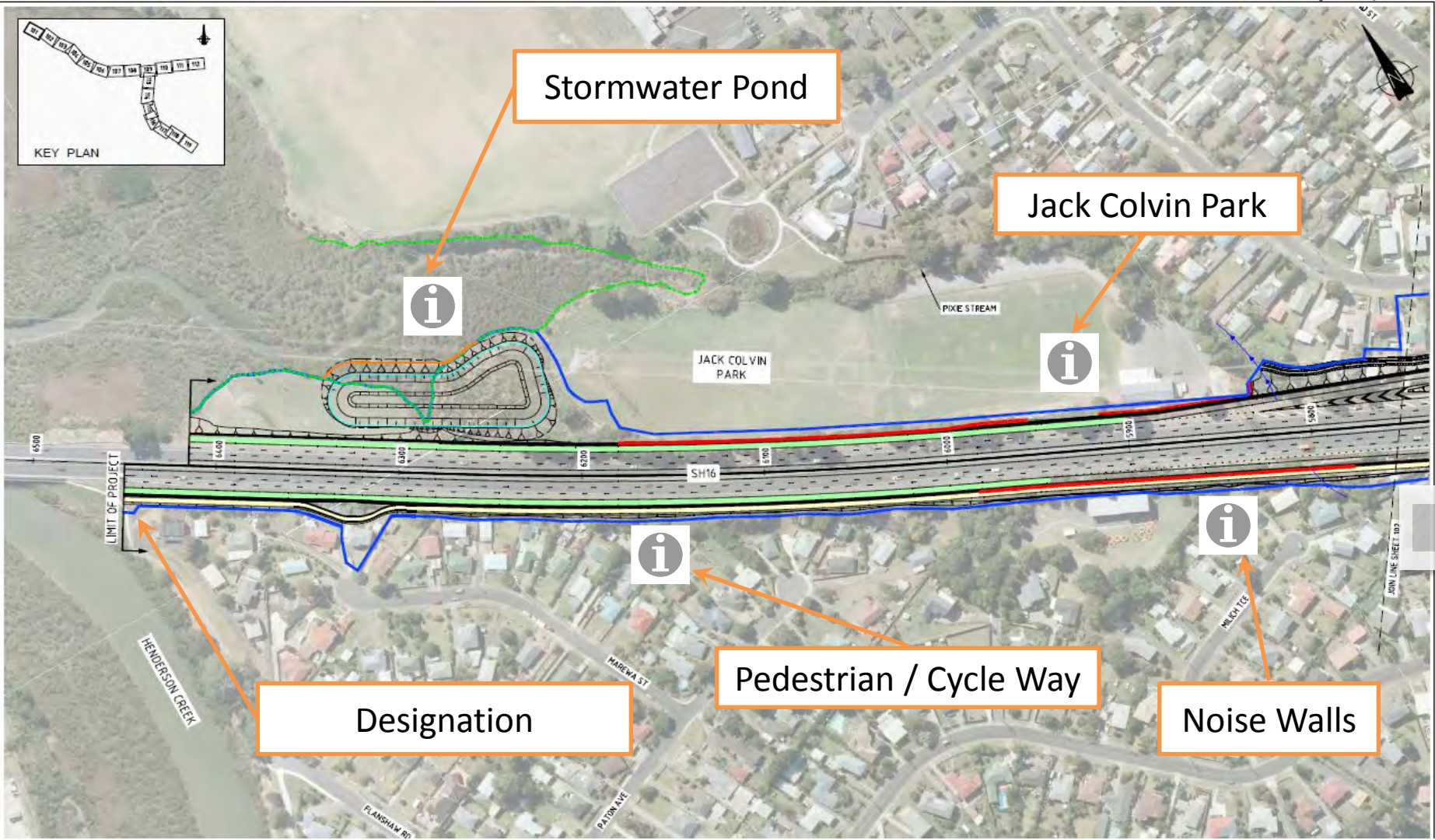
For SH20, between Great North Road Interchange (with SH16) and Maoro Street Interchange, a new State highway alignment will be provided over a length of approximately 5km and capacity for up to three traffic lanes in each direction. The following key elements of work will be undertaken:

- A new interchange will be built at the "Great North Road Interchange" to provide motorway-to-motorway connections between SH16 and SH20 (both west and east bound movements) (Sector 5);
- At the Great North Road Interchange, the existing connections between Great North Road and SH16 will be maintained (Sector 5);
- Realignment but retention of the Northwestern Cycleway through the Great North Road Interchange (Sector 5);
- The Project provides capacity for up to three traffic lanes in each direction on SH20, separated by either central median barrier or separate tunnel construction;
- A cycleway extension to the existing "SH20 Cycleway" (that terminates at the Maoro Street Interchange) will be provided adjoining the carriageway where the motorway is at-grade (Sector 9);
- From the Great North Road Interchange, the alignment will comprise two cut-cover tunnels beneath Great North Road transitioning to the two open-face excavation tunnels ("deep tunnels") (Sector 7);
- The construction of the two deep tunnels (one in each direction) from the cut-cover tunnel beneath Great North Road through to the Alan Wood Reserve (Sector 8);
- From the Alan Wood Reserve and the deep tunnels, the Project is "at-surface" over a length of around 1km to Richardson Road, to connect to SH20 at the Maoro Street Interchange (Sector 9) (total length 1.8km). Through this Sector the carriageway traverses alongside and across the existing Avondale to Southdown Rail Line Designation;
- Richardson Road will be bridged "at grade", with the State highway cut beneath and new north-facing ramps will be built at the Maoro Street Interchange to provide local traffic access to SH20 (Sector 9); and
- The design of the State highway has not precluded the future Avondale to Southdown Rail Line and has maintained a land corridor of sufficient width (e.g. for double track with electrification), from the Maoro Street Interchange to the southern tunnel portal in Alan Wood Reserve (Sector 9).

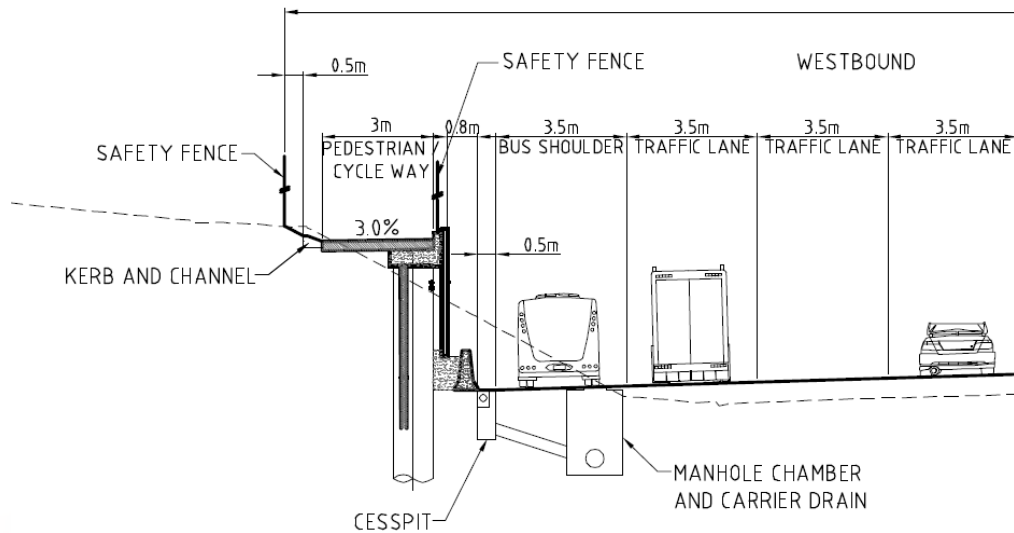
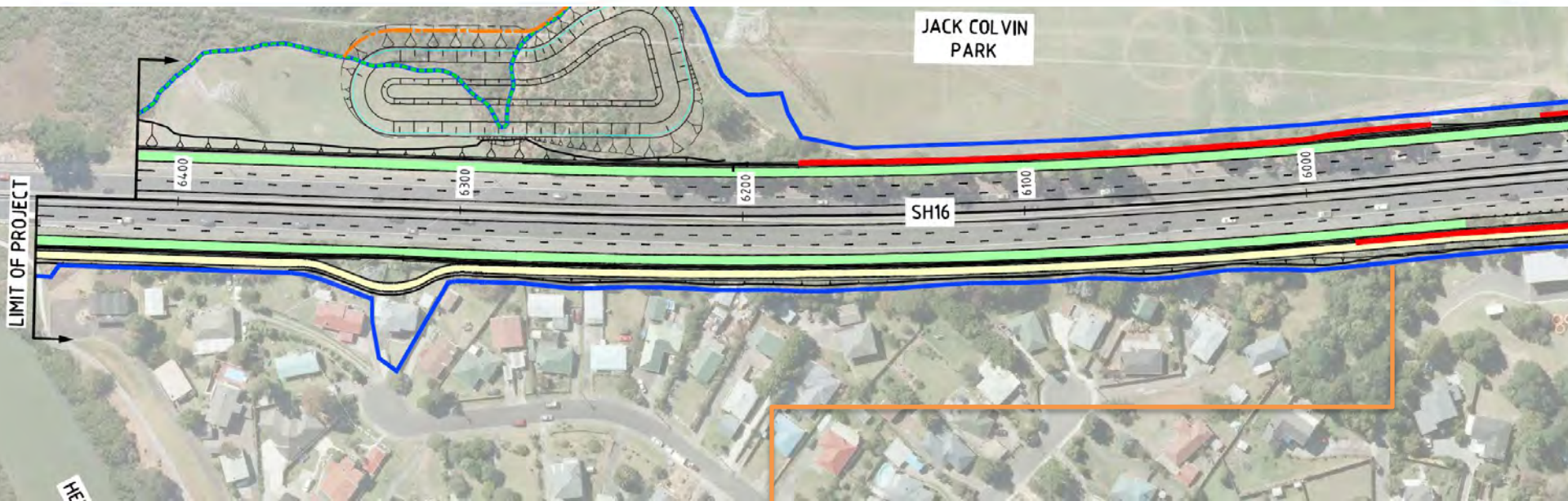
Status Final Assessment of Environmental Effects August 2010
Document Reference No. 20.1.11-3-6-N-1024 Page 0.0

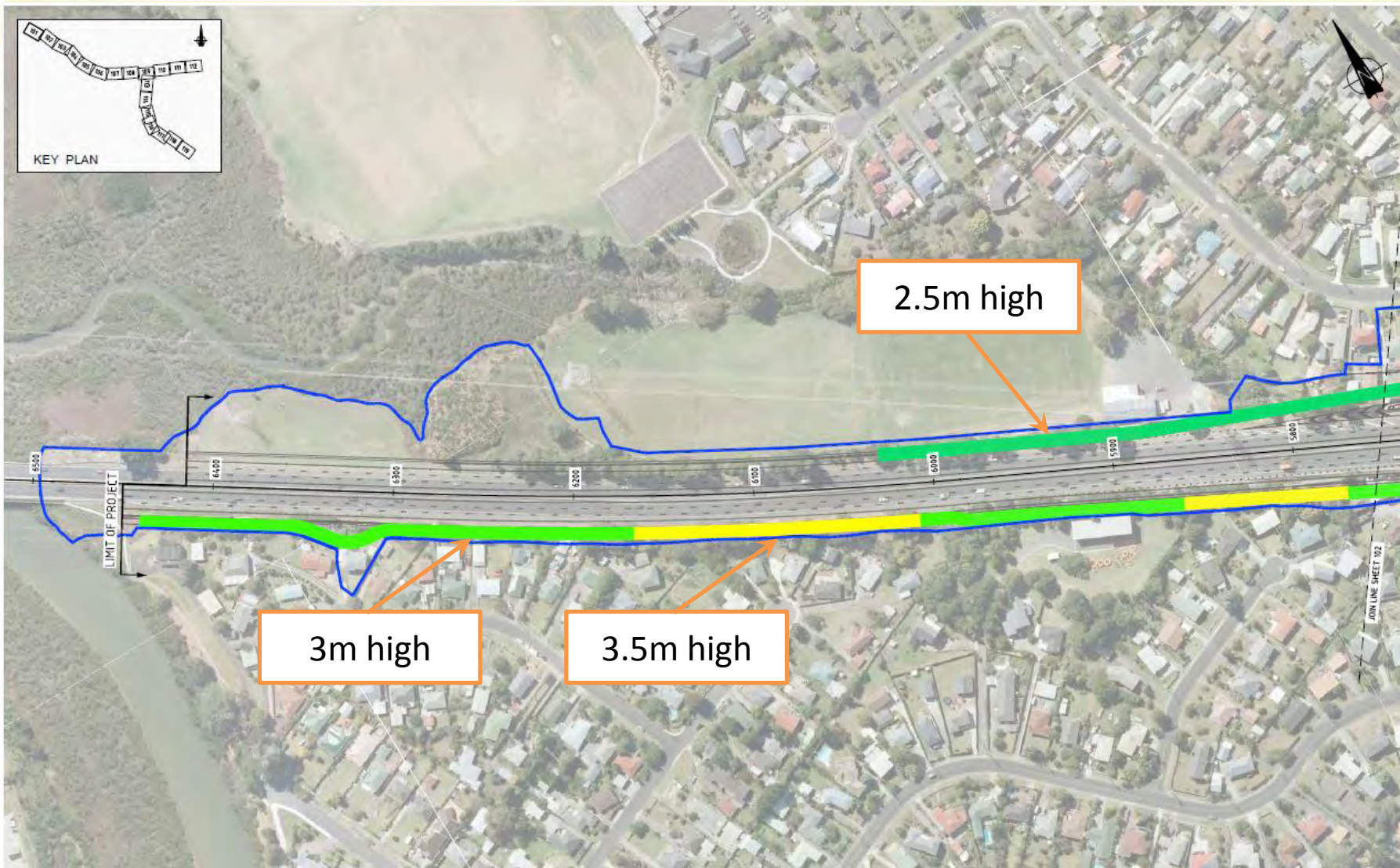
Project Overview

SH16 Henderson Creek to Great North Road





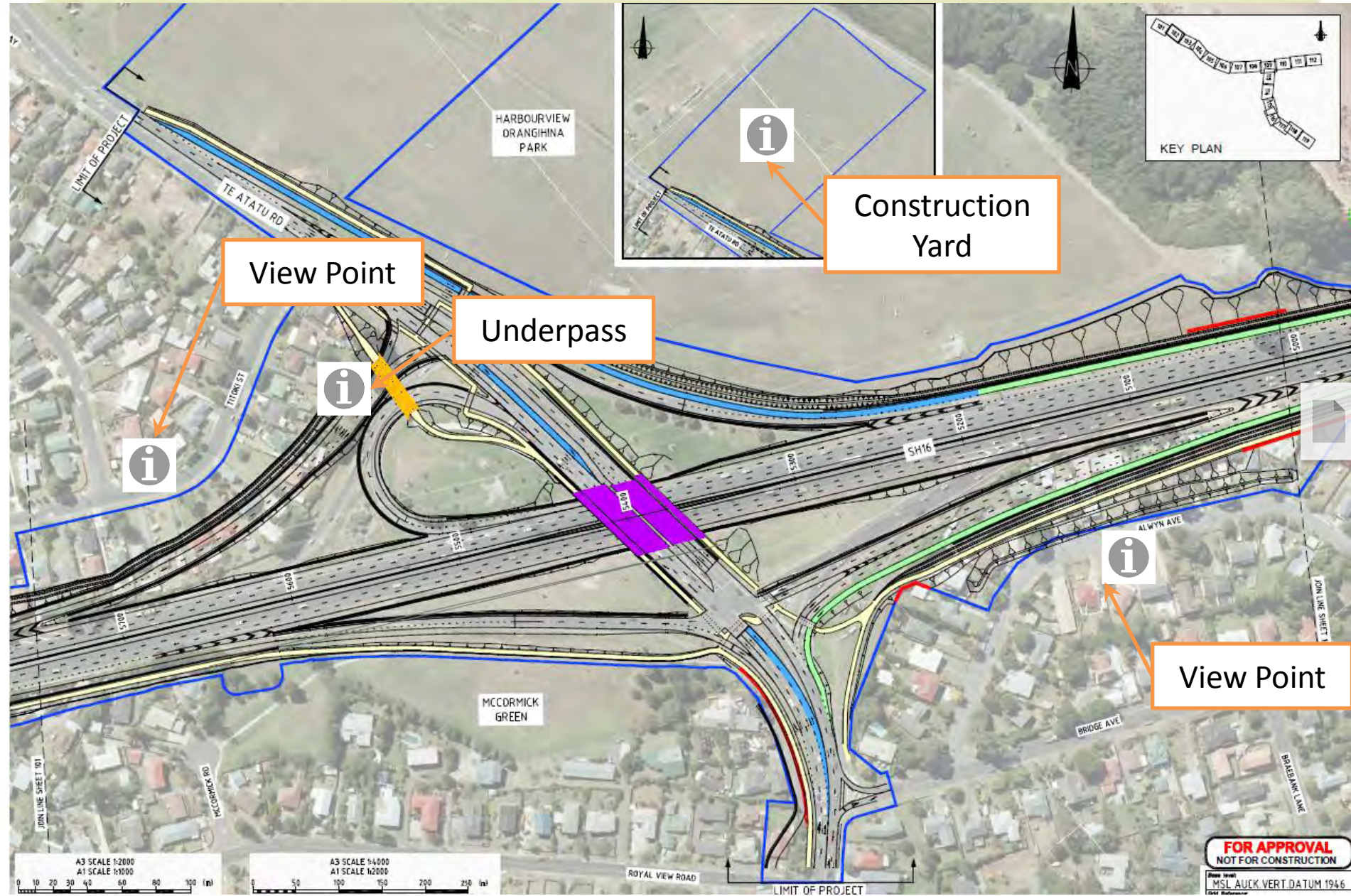


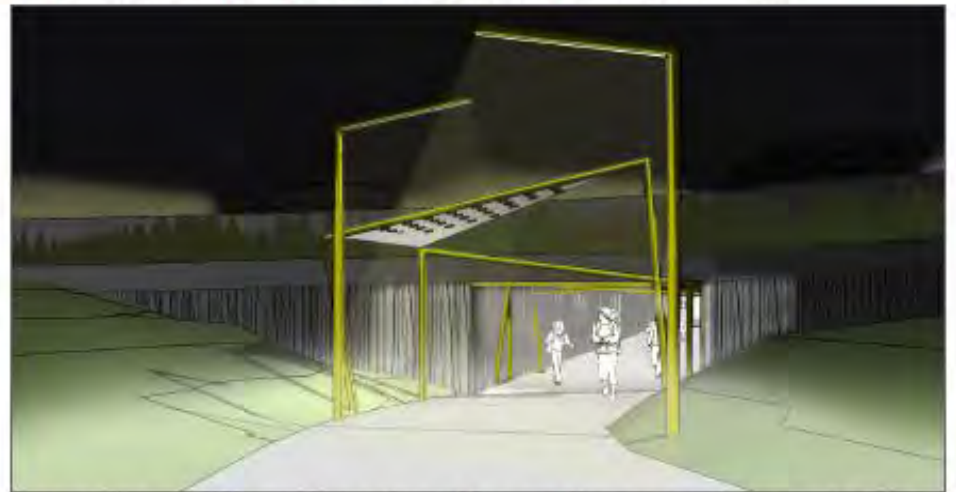
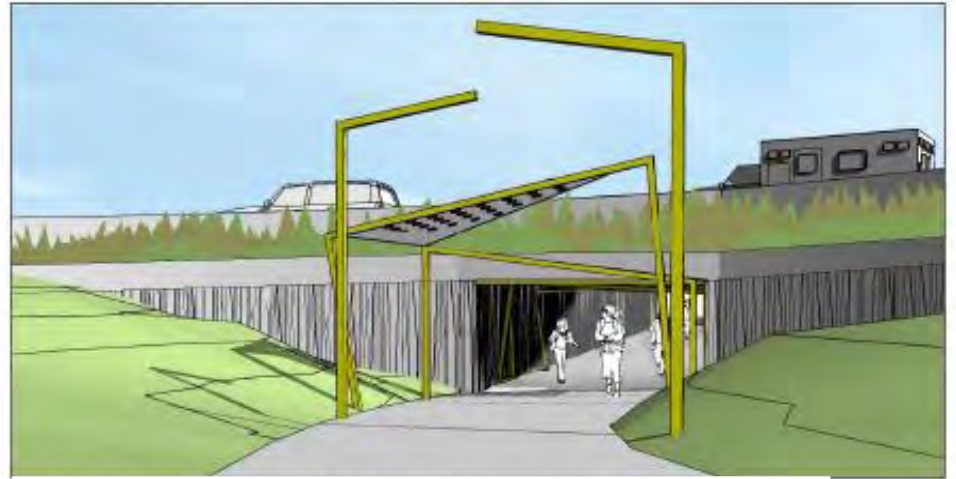
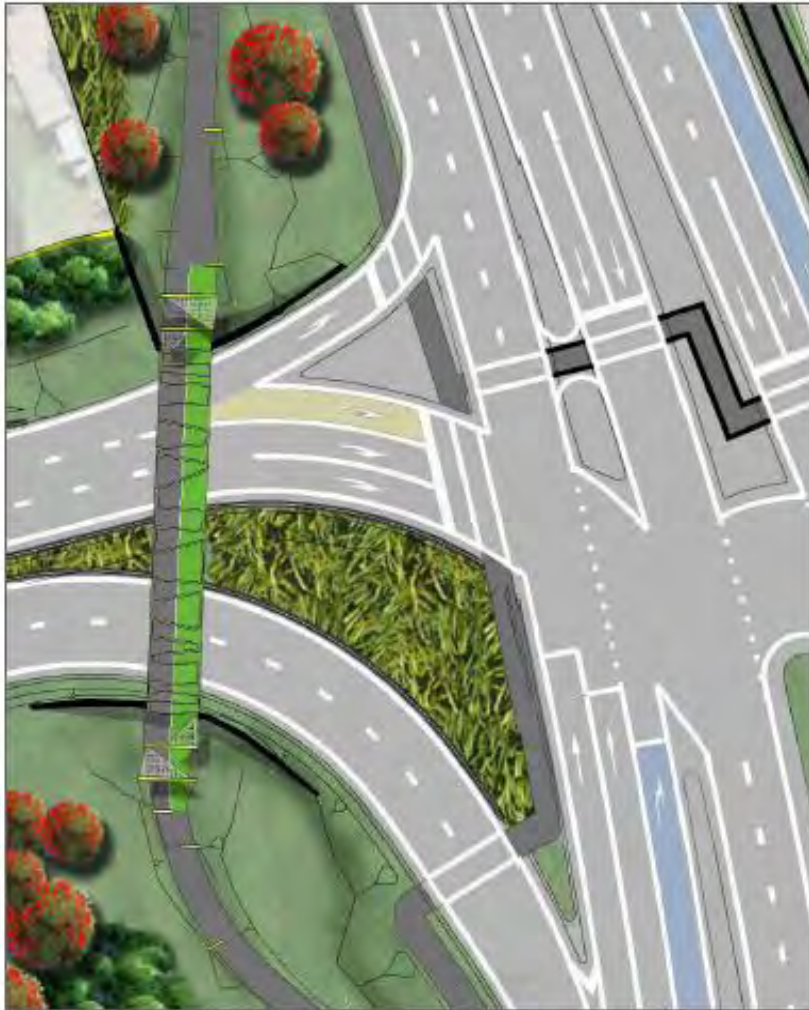




Existing View









Activities

Offices/Ablutions/Parking

Construction Plant & Equipment Parking, Materials Storage and Lay Down Areas

Workshop

Waste Management/Storage

Refuelling Facility

Earthworks (to provide flat areas)

Erosion & Sediment Control/Stormwater Management

Site Access/Traffic Management

Lighting

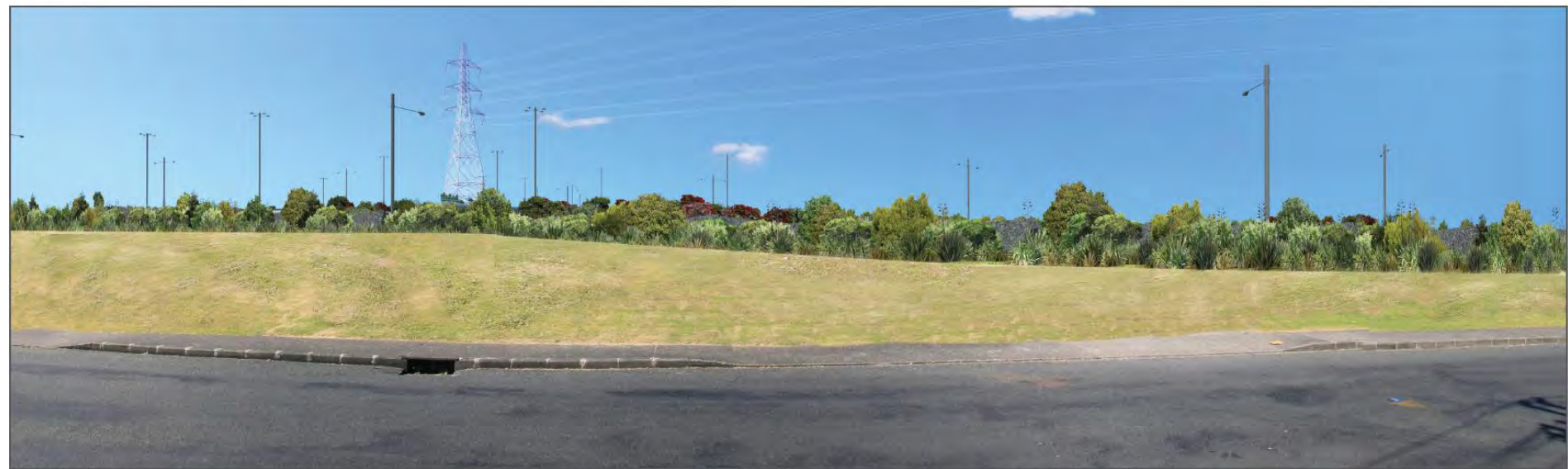
Perimeter Fencing



7 Titoki Street



Existing View





11 Alwyn Avenue





Existing View



NZ TRANSPORT AGENCY
WAKA KOTAHĪ



New Zealand Government

Whau River Bridge

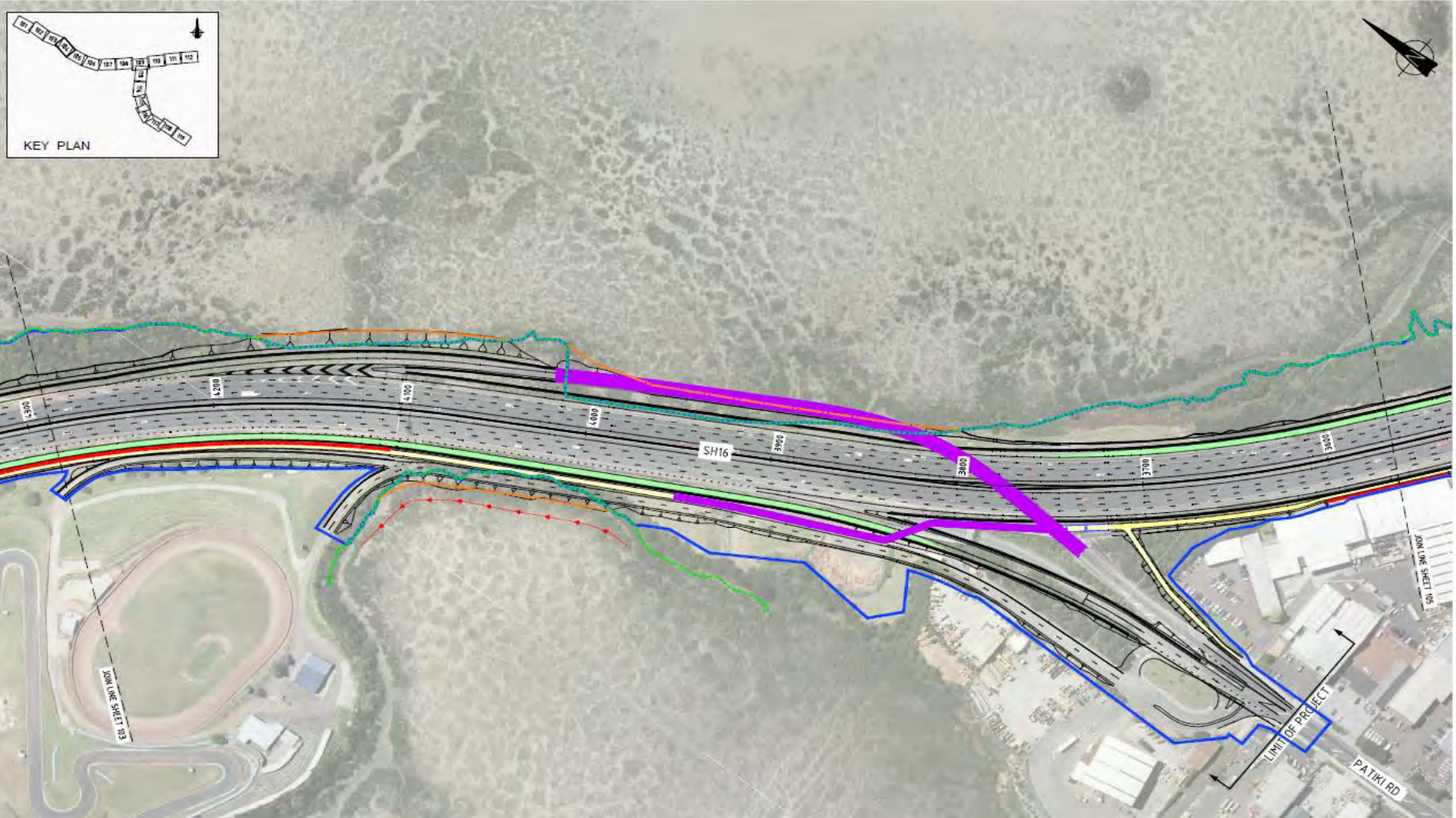
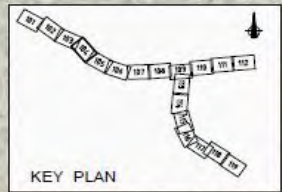




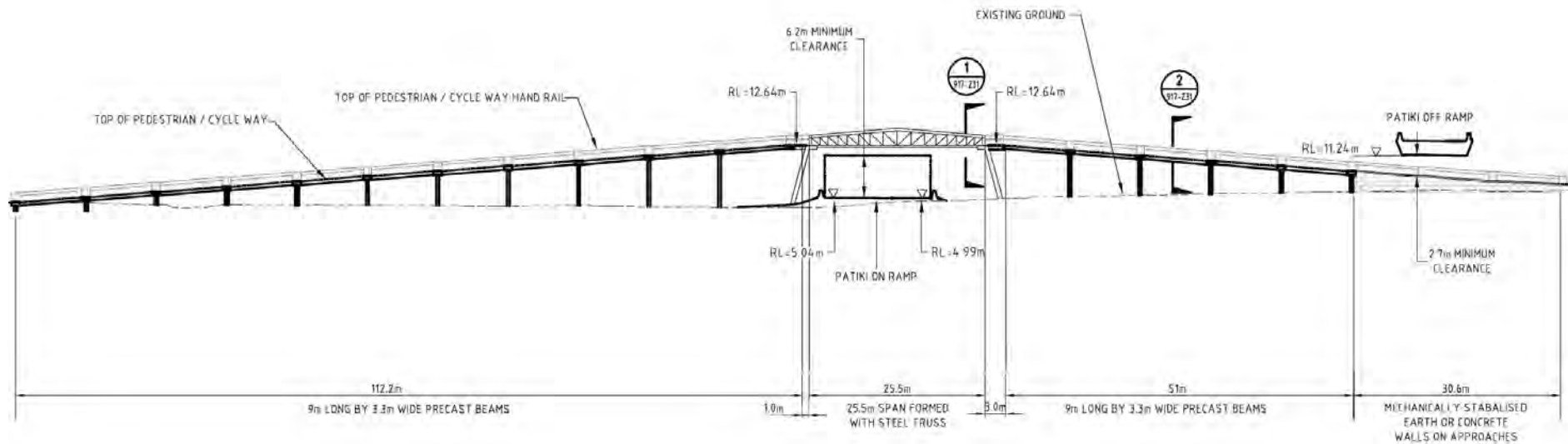
Existing View



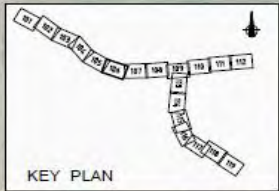
Patiki Interchange



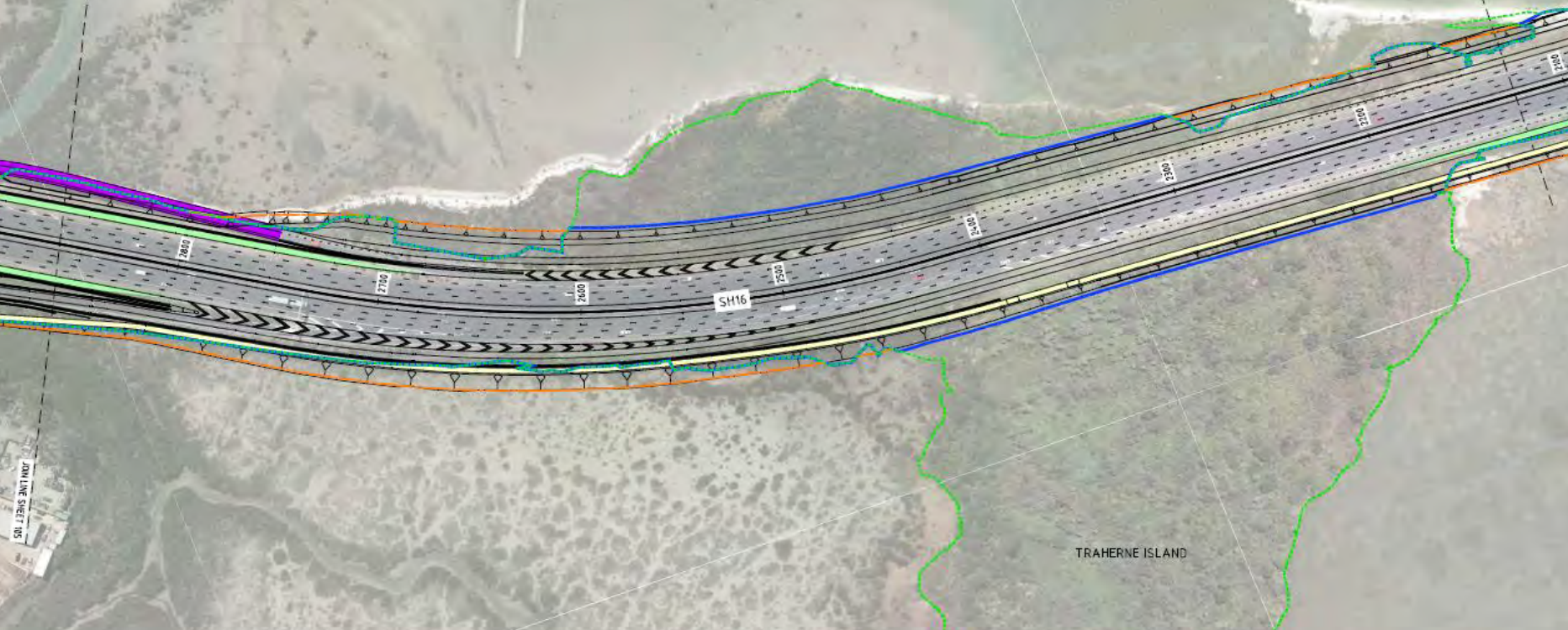
Patiki Pedestrian / Cycle Bridge



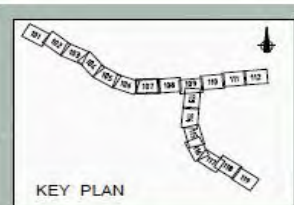
SH16 Causeway - Traherne Island



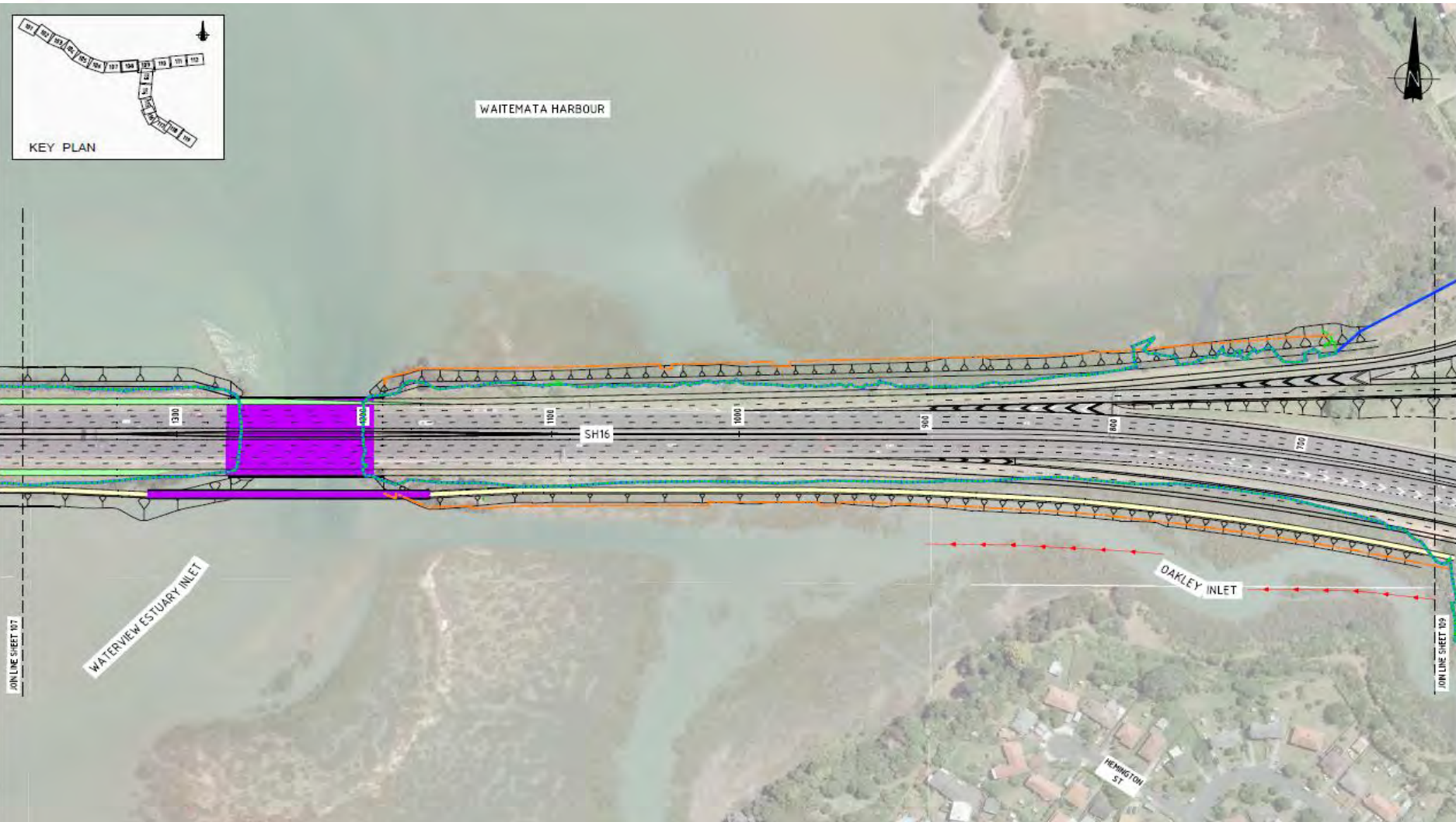
JOIN LINE SHEET 10



SH16 Causeway - Estuary



SH16 Causeway - Bridges



View of Causeway (Howlett Street Walkway)



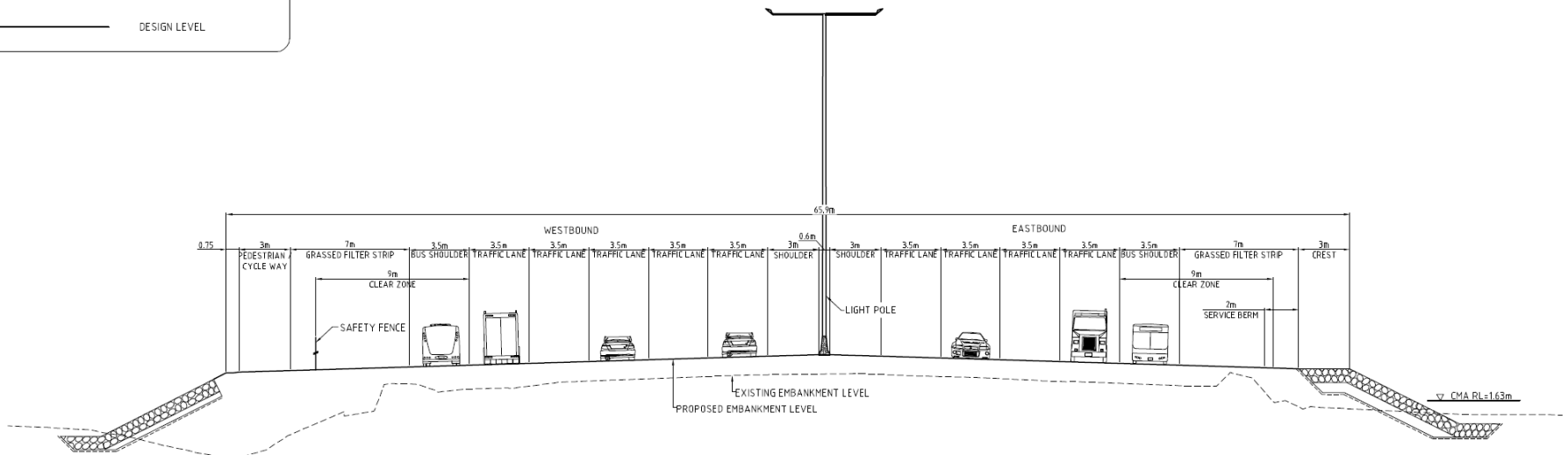
Existing View



Typical Cross Section

LEGEND

- EXISTING LEVEL
- DESIGN LEVEL



TYPICAL CROSS SECTION THROUGH CAUSEWAY

What Next?

NZTA public presentations

Thursday 16 September – Oakridge House Unitec 7pm – 9pm.

Saturday 18 September – Owairaka School 11.30am – 1.30pm and
2pm – 4pm.

Tuesday 21 September – Waterview Methodist Church
7pm – 9pm.

National Consenting Process

‘Friend of the Submitter’ (EPA Role)

Submissions can be made online

See www.epa.govt.nz



Questions

