

Interim Speed Management Plan

Purpose of this document

All Road Controlling Authorities in New Zealand are required to develop, and consult on, a speed management plan in accordance with the Setting of Speed Limits Rule 2022. This document is the interim speed management plan for Dunedin City Council developed under the latest legislation.

Improvements to road safety are one of the four strategic priorities of the Government Policy Statement on land transport (GPS). As the territorial authority for Dunedin the council has a fundamental role in helping achieve the improvements to road safety required under the Road to Zero national road safety strategy. The vision of Road to Zero is to develop a transport system where no-one is killed or seriously injured. Speed management is an internationally accepted tool to move towards this vision and is therefore a key component of the strategy.

Road to Zero

Road to Zero is the Government's vision where everyone, whether they are walking, cycling, driving, motorcycling or taking public transport, can get to where they are going safely. Dunedin City Council supports that vision and our speed management plan is intended to turn the vision into a future reality.

Road to Zero has seven guiding principles underpinning the vision

1. We promote good choices but plan for mistakes
2. We design for human vulnerability
3. We strengthen all parts of the road transport system
4. We have a shared responsibility for improving road safety
5. Our actions are grounded in evidence and evaluated
6. Our road safety actions support health, wellbeing and liveable places
7. We make safety a critical decision-making priority

Speed management is one of the few tools that is relevant across all of these guiding principles.



Figure 1 Extract from Road to Zero Strategy document

What is Speed Management?

Speed management is more than just speed limits. It is about achieving safe and appropriate travel speeds that reflect the function of that road, its design, safety and use. We want people and goods to be able to move quickly and easily through Dunedin but we also want everyone on or near the road to be safe.

The Waka Kotahi Speed Management Guide provides a national single assessment framework for determining safe and appropriate speeds on New Zealand's entire road network. The guide shows how to progressively align travel speeds with road function, design, safety and use, taking into account traffic and freight volumes and place functions. The guiding principles for speed management are outlined in Figure 2.



Figure 2 Guiding principles of speed management

Safe and appropriate travel speeds help to minimise the severity of crashes when they occur. Lower speeds give road users a second chance to either avoid a crash or at least walk away from one if it happens. International research has shown the survivable speed for a variety of crash types. Figure 3 shows that for pedestrians and cyclists a crash at 30km/h is nearly always going to be survivable whereas at 50km/h will nearly always result in a death or serious injury.

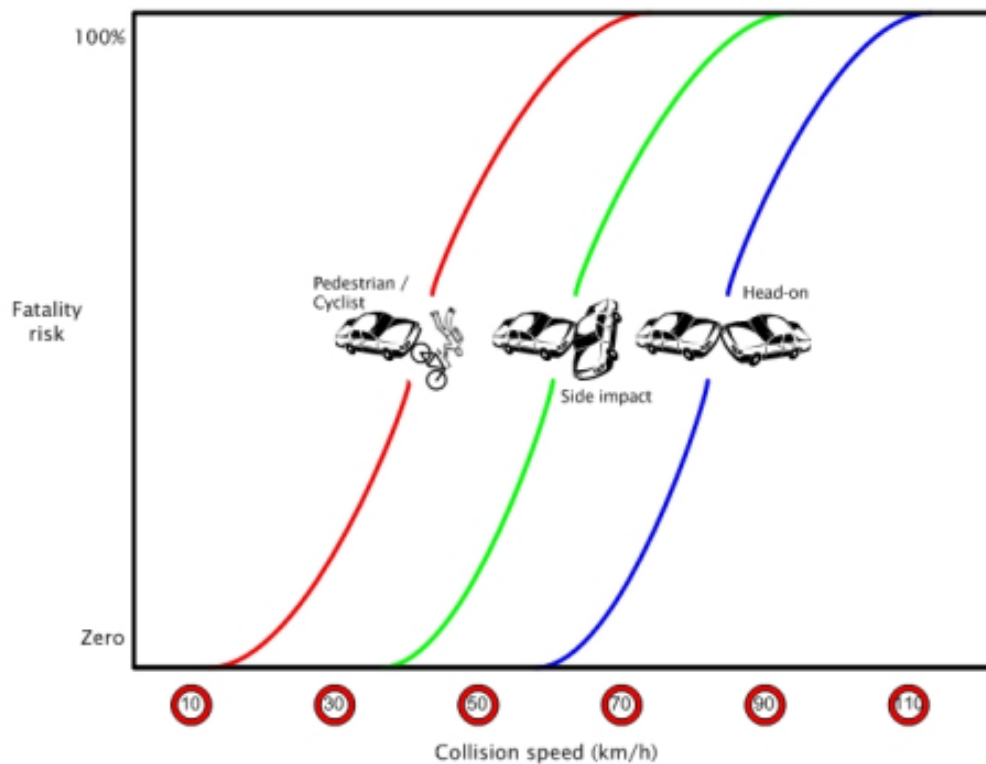


Figure 3 Fatality risk at different collision speeds (Waka Kotahi)

To achieve lower travel speeds in some areas it will be necessary to support the lower posted speed limit with infrastructure changes such as traffic calming measures, urban design and amenity features and improved provision for pedestrians, cyclists and mobility impaired users. We know that simply changing the speed limit signs will not always provide the benefits that we wish to achieve.

It has been acknowledged that in the past speed limit reviews did not give sufficient weight to road classification, design, geometric characteristics, network efficiency or the Safe System approach. The result is that on some routes in Dunedin travel speeds are not appropriate for the road use and function. The safe and appropriate speed for a road is directly linked to its function which is a key part of the One Network Framework.

The One Network Framework

The One Network Framework (ONF) establishes a movement and place based approach to categorising roads in Dunedin with a clear link to the safe and appropriate speed. Speeds are aligned with survivable safe system limits and take into account vulnerable users such as pedestrians and cyclists. Speed limits can be increased where safety infrastructure has been constructed such as raised crossings, separated cycling facilities or median barriers

In urban areas we will see more speed limits below 50km/h on local streets with a residential focus. The new focus is shown in Figure 4 below.

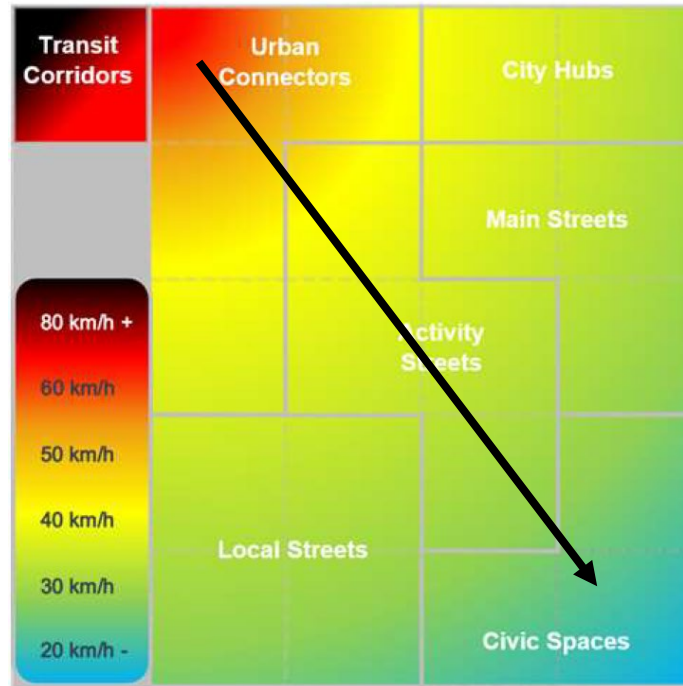


Figure 4 Safe and appropriate speed guidance for urban roads

Our Speed Management Plan

Our speed management plan sets out what we will do to achieve the goals outlined in the GPS and Road to Zero as well as our Integrated Transport Strategy. This document is our interim plan which continues the conversation around speed management in Dunedin and will inform the development of the full plan which will begin in 2023. The full speed management plan will include our ten year vision and a three year action plan.

The primary objective of this interim speed management plan is to set a 30km/h speed limit on roads outside schools. This interim speed management plan considers all 72 schools within the Dunedin City Council boundary and proposes to introduce lower speed limits at all of them. Due to the scale of this we will not be implementing all of these changes at the same time but gradually over the next few years.

In some cases we are proposing that schools sit within a wider 30km/h permanent speed zone. For other schools we are proposing variable schools zones, where the speed limit will be reduced to 30km/h during school pick up and drop off times.

We are also looking at four area wide speed zones in Mornington, Caversham, Māori Hill and the Tertiary Precinct to manage conflict in our priority Centres.

The following principles have guided the development of this interim speed management plan.

- All schools will have a 30km/h speed limit, either permanent or variable (during school drop off/pick up times).
- 30km/h speed limits will be supported by physical measures when required.
- Urban centres will be progressively reviewed, and 30km/h speed limits introduced in more Centres in the future.
- School speed limits will extend further on to residential roads where this is the logical decision or where local residents request it.
- We will work with Waka Kotahi to ensure consistency where our roads intersect with the state highway network.

Speed limits outside schools

The Setting of Speed Limits Rule 2022 (the Rule) introduces a number of specific requirements relating to the speed of traffic on roads outside of schools. In future all schools will require a 30km/h speed limit, either permanent (all day every day) or variable (during school drop off and pick up times).

The Rule allows us to determine what sections of road are classed as **a road outside a school** and are subject to a 30km/h speed limit. This determination is made based on typical or expected routes for pedestrians to access the school and for the purpose of making people feel safer to walk or cycle to and from school.

In a number of cases this means that the 30km/h speed limit is not just along the school frontage but also on several surrounding streets. In a number of areas we have the option of extending a 30km/h school speed limit to become an area wide speed limit. We sought views on the proposals, the maps in Appendices A and B are the proposed speed limit following consultation.

We are required by the new legislation to have set a 30km/h speed limit outside at least 40 percent of our schools by 30 June 2024 and all schools by the 31 December of 2027. We intend to exceed this target and introduce 30km/h speed limits around all schools in Dunedin by June 2024.

The Rule requires us to review all schools and assign them as either Category 1 or 2. Pūrākaunui School is the only school within the Dunedin boundary that could be designated Category 2. As a result of feedback received from the school and the community, we proposed a variable 30 km/h speed limit.

Speed limits in urban centres

We want our urban centres to be thriving hubs of activity, supporting the provision of goods and services.

The highest concentration of vulnerable user activity occurs in these urban centres and traffic speeds need to be managed in a manner appropriate for the mix of uses and activities that take place there. We have recognised that 50km/h travel speeds are too high for most centres, a view supported by the Waka Kotahi Speed Management Guide and shown in Figure 3.

To achieve lower travel speeds in urban centres it will be necessary to support the lower posted speed limits with infrastructure changes as part of a redesign of the road environment. Lower travel speeds in centres will require traffic calming measures, urban design and amenity features and improved provision for pedestrians, cyclists and mobility impaired users. Only changing the speed limit signs will not provide the benefits that we wish to achieve.

Reducing speeds within urban centres will have the added benefit of making centres more accessible and pleasant places where people will want to spend time, which will have economic benefits for businesses.

Four centres are included in this interim speed management plan; Mornington, Caversham, Māori Hill and the Tertiary Precinct.

The tertiary area is treated as a centre in our Integrated Transport Strategy because it functions as a key transport hub and has unique transport issues. The wider tertiary area and the adjacent medical precinct have a high level of vulnerable road user activity and area-specific transport challenges. We are therefore proposing a change in speed limit and the speed environment on the roads that form the tertiary precinct, outlined in Appendix C.

Part 2 - Proposals

All proposed speed limits, approved by Council on Monday 27 March 2023, are detailed below. The online [Dunedin ISMP 2023 map](#) also shows the approved speed limits.

Speed limits outside schools

The tables below list all of the schools in Dunedin together with the proposed speed limit. Under the Rule we are required to introduce the lower speed limit at all schools, consultation has helped to determine the extents of the lower speed limits, where we have extended them to cover other streets, and where we are proposing an area wide application of 30km/h permanent speed limits. Waka Kotahi will address speed limits for schools on State Highways.

Table 1 Schools with a 30km/h variable speed limit (Appendix A)

Amana Christian School	Dunedin North Intermediate	Kaikorai Valley College	Otago Boys High School	St Bernadette's School	Te Kura Kaupapa Māori o Ōtepoti
Andersons Bay School (part)	East Taieri School	Kavanagh College	Otago Girls High School	St Brigid's School	Silverstream School
Arthur Street School	Elmgrove School	Kings High School	Outram School	St Francis Xavier School	Waikouaiti School
Balaclava School	Fairfield School	Liberton Christian School	Pine Hill School	St Joseph's Cathedral School	Waitati School
Bathgate Park School	George Street Normal school	Mornington School	Portobello School	St Mary's School (Dunedin)	Wakari School
Bayfield School	Grants Braes School	Musselburgh School	Pūrākaunui School	Tahuna Normal Intermediate School	
Brockville School	John McGlashan College	North East Valley Normal School	Queens High School	Taieri College	
Columba College	Kaikorai Primary School	Ōpoho school	Sacred Heart School	Tainui School	

Table 2 Schools with a permanent 30km/h speed limit (Appendix B)

Abbotsford School	Carisbrook School	Karitāne School	Ravensbourne School	St Mary's School (Mosgiel)
Andersons Bay School (part)	Concord School	Logan Park High School	Sawyers Bay School	Warrington School
Balmacewan Intermediate School	Dunedin Rudolf Steiner School	Māori Hill School	St Clair School	
Big Rock Primary School	Green Island School	Macandrew Bay School	St Hilda's Collegiate School	
Bradford School	Halfway Bush School	OneSchool Global	St Leonards School	
Broad Bay School	John McGlashan College	Port Chalmers School	St Mary's School (Dunedin)	

Speed limits at urban centres

We are proposing the following speed limit changes in the following urban centres.

Caversham

South Road in Caversham is a key destination for the community. The centre of Caversham includes a medical centre, restaurants, cafes, grocery stores, a community centre, churches, early childhood centres and a primary school. Parking is available on both sides of the road resulting in relatively high numbers of pedestrians crossing the road. The centre is on a grade, resulting in vehicles travelling at high speeds at certain times of the day. To make the hub of Caversham a more liveable area we are proposing a permanent 30km/h speed limit across the roads as shown below.



Figure 5 Caversham proposed speed limit

Māori Hill

Māori Hill is a busy centre which services two schools, Māori Hill School and John McGlashan College, as well as a few restaurants and cafes, and a community hall. The centre of Māori Hill is at the peak of the hill, where three key arterial routes intersect at a roundabout. To make this hub a more liveable area we are proposing a permanent 30km/h speed limit across the roads as shown below, with a variable 30km/h speed limit along Balmacewen Road.



Figure 6 Māori Hill proposed speed limit

Mornington

Mornington centre has several destinations on Mailer Street including a supermarket, medical centre and petrol station. Parking is available on both sides of the road resulting in relatively high numbers of pedestrians crossing the road. Additionally, because the centre is on a grade, vehicles travel at high speeds at certain times of the day. To make the hub of Mornington a more liveable area we are proposing a permanent 30km/h speed limit across the roads as shown below.



Figure 7 Mornington proposed speed limit

Tertiary Precinct

The Tertiary Precinct is an area that has a high walking mode share and high operational speeds. The area services and houses the majority of the city's tertiary students, with the University of Otago, Otago Polytechnic and Logan Park High School campuses, and the city's main recreational sport centres at Logan Park and Forsyth Barr Stadium.

We propose a permanent 30km/h speed limit across the roads shown in the image below.



Figure 8 Tertiary Precinct proposed speed limit

Secondary proposals

The full speed management plan will discuss how we treat city roads in detail. As well as the work detailed previously, this interim plan intends to remedy a number of other speed limit issues around the city.

City Centre low speed zone

We are proposing a 10km/h speed limit of the retail section of George Street. As a shared space, this speed limit will create a safe and enjoyable area for shoppers, pedestrians, whānau and people with disabilities. The remaining block of George Street between Frederick Street and Albany Street is proposed to be 30km/h.

A plan of the proposed changes are shown in Appendix D.

Karitāne and Pūrākanui

Following a request some time ago from the community board we propose to implement a shared space on Karitāne Reserve Road and Bravas Street. These roads have no footpath and provide access to the estuary and reserves.

Additionally, in response to requests from the community, we propose to reduce the speed limit to 30km/h from Seaforth Street covering all roads leading to Huriawa Pā.

In Pūrākanui historical requests are also being dealt with to reduce the speed limit to 60km/h.

A plan of the proposed changes are shown in Appendix E.

Appendix A - School zones with proposed 30km/h variable speed limits



TYPE OF CHANGE: SCHOOL
The roads highlighted will be subject to a 30km/h school speed limit at certain times on school days.

-  School
- School hours only**
-  30kph



Andersons Bay



TYPE OF CHANGE: SCHOOL

The roads highlighted will be subject to either a permanent 30km/h speed limit or a 30km/h school speed limit at certain times on school days.

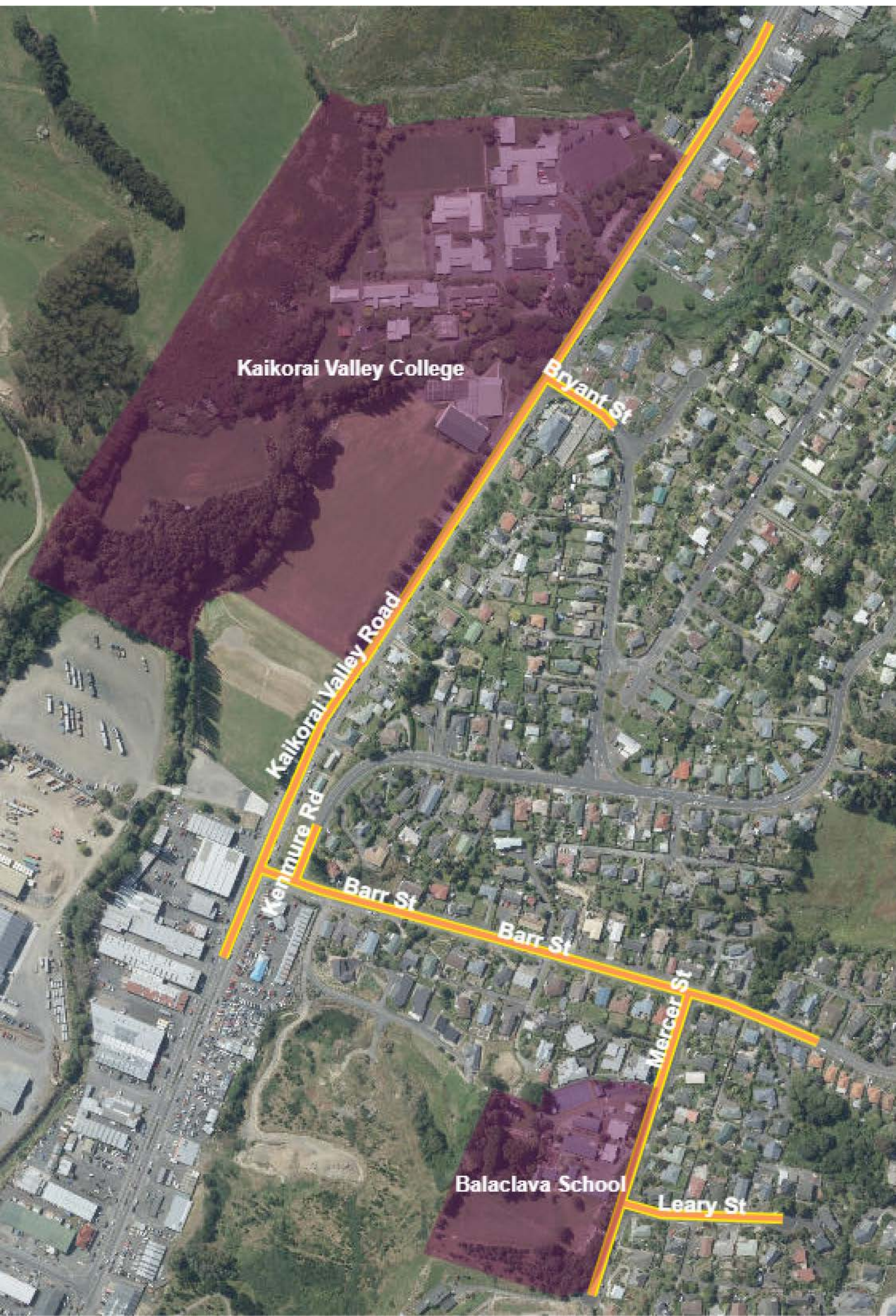
-  School
- All day**
-  30kph
- School hours only**
-  30kph



Balaclava School and Kaikorai Valley College

TYPE OF CHANGE: SCHOOL

The roads highlighted will be subject to a 30km/h school speed limit at certain times on school days.



 School

School hours only

 30kph



Bayfield, St Brigids

TYPE OF CHANGE: SCHOOL

The roads highlighted will be subject to a 30km/h school speed limit at certain times on school days.



-  School
- School hours only**
-  30kph



Brockville

TYPE OF CHANGE: SCHOOL

The roads highlighted will be subject to a 30km/h school speed limit at certain times on school days.



-  School
- School hours only**
-  30kph



Central Schools



TYPE OF CHANGE: SCHOOL
The existing 40km/h school speed limit will be reduced to 30km/h.

-  School
- School hours only**
-  30kph



Columba, Kaikorai Primary

TYPE OF CHANGE: SCHOOL

The roads highlighted will be subject to a 30km/h school speed limit at certain times on school days.



-  School
- School hours only**
-  30kph



DNI, Sacred Heart

TYPE OF CHANGE: SCHOOL

The roads highlighted will be subject to a 30km/h school speed limit at certain times on school days.



 School

School hours only

 30kph



East Taieri



TYPE OF CHANGE: SCHOOL

The roads highlighted will be subject to a 30km/h school speed limit at certain times on school days.

-  School
- School hours only**
-  30kph



Elmgrove

TYPE OF CHANGE: SCHOOL
The roads highlighted will be subject to a 30km/h school speed limit at certain times on school days.



-  School
- School hours only**
-  30kph



Fairfield

TYPE OF CHANGE: SCHOOL

The existing 40km/h school speed limit will be reduced to 30km/h.



-  School
- School hours only**
-  30kph



George Street Normal

TYPE OF CHANGE: SCHOOL

The existing 40km/h school speed limit will be reduced to 30km/h.



George Street Normal School

Duke St

George St

Warrender St

Howe St

 School

School hours only

 30kph



Grants Braes

TYPE OF CHANGE: SCHOOL


The roads highlighted will be subject to a 30km/h school speed limit at certain times on school days.



Grants Braes School

 School

School hours only

 30kph



Kings, Queens, Bathgate

TYPE OF CHANGE: SCHOOL

The existing 40km/h school speed limit will be reduced to 30km/h.



-  School
- School hours only**
-  30kph



Māori Hill


TYPE OF CHANGE: CENTRE

The roads highlighted will be subject to either a permanent 30km/h speed limit or a 30km/h school speed limit at certain times on school days.



 School

All day

 30kph

School hours only

 30kph



Mornington School



TYPE OF CHANGE: SCHOOL
The roads highlighted will be subject to a 30km/h school speed limit at certain times on school days.

-  School
- School hours only**
-  30kph



Musselburgh, Tahuna, Tainui



TYPE OF CHANGE: SCHOOL

The roads highlighted will be subject to a 30km/h school speed limit at certain times on school days.

-  School
- School hours only**
-  30kph



North East Valley

TYPE OF CHANGE: SCHOOL

The roads highlighted will be subject to a 30km/h school speed limit at certain times on school days.



-  School
- School hours only**
-  30kph



Opoho

TYPE OF CHANGE: SCHOOL
The roads highlighted will be subject to a 30km/h school speed limit at certain times on school days.



-  School
- School hours only**
-  30kph



Outram

TYPE OF CHANGE: SCHOOL

The roads highlighted will be subject to either a permanent 50km/h speed limit, or a 30km/h school speed limit at certain times on school days.



 School

All day

 50kph

School hours only

 30kph



Pinehill, Liberton

TYPE OF CHANGE: SCHOOL

The roads highlighted will be subject to a 30km/h school speed limit at certain times on school days.



-  School
- School hours only**
-  30kph



Portobello



TYPE OF CHANGE: SCHOOL

The roads highlighted will be subject to a 30km/h school speed limit at certain times on school days.

-  School
- School hours only**
-  30kph



Pūrākaunui, Osborne



TYPE OF CHANGE: ROAD

It is proposed that the existing 80km/h speed limit becomes 60km/h with a permanent 30km/h speed limit at Osborne and a 30km/h school speed limit at Pūrākaunui School operational at certain times on school days.

 School

All day

 30kph

 60kph

School hours only

 30kph



St Bernadettes

TYPE OF CHANGE: SCHOOL

The roads highlighted will be subject to a 30km/h school speed limit at certain times on school days.



-  School
- School hours only**
-  30kph






St Mary's (Dunedin)

TYPE OF CHANGE: SCHOOL

The roads highlighted will be subject to either a permanent 30km/h speed limit or a 30km/h school speed limit at certain times on school days.

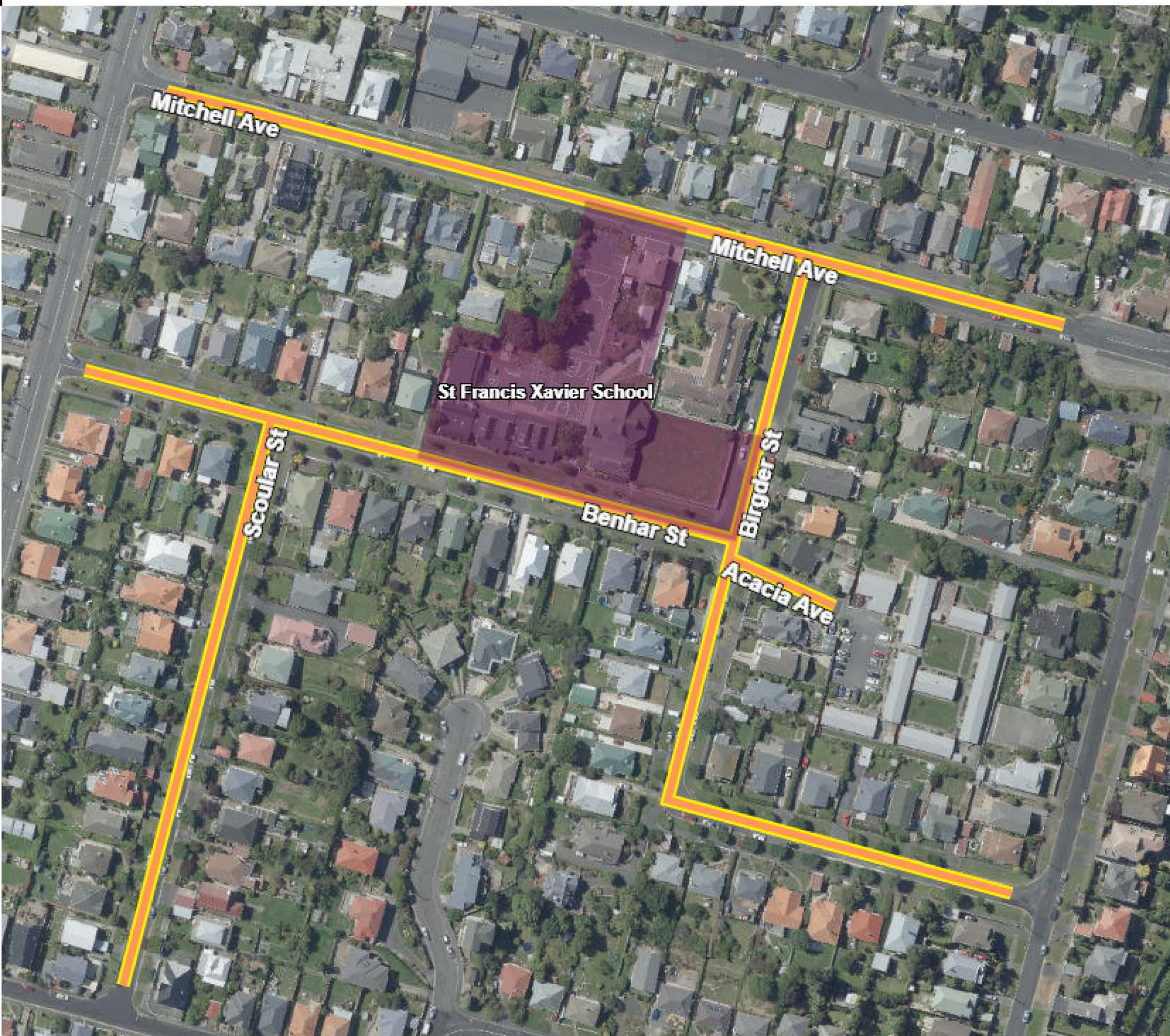


-  School
- All day**
-  30kph
- School hours only**
-  30kph



St Francis Xavier

TYPE OF CHANGE: SCHOOL
The roads highlighted will be subject to a 30km/h school speed limit at certain times on school days.



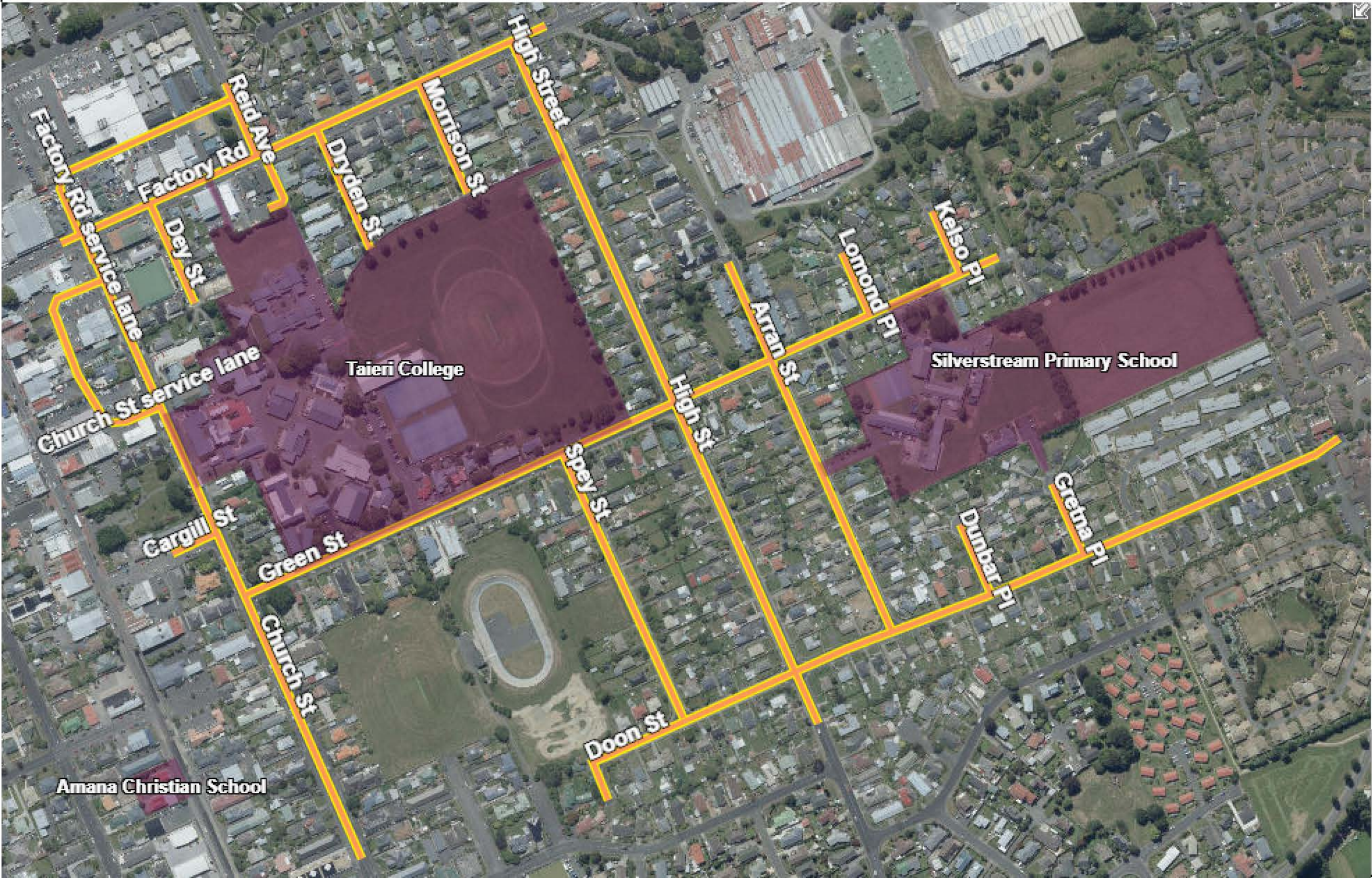
-  School
- School hours only**
-  30kph



Taieri, Silverstream

TYPE OF CHANGE: SCHOOL

The roads highlighted will be subject to a 30km/h school speed limit at certain times on school days.



- School
- School hours only**
- 30kph



Te Kura Kaupapa Māori

TYPE OF CHANGE: SCHOOL

The roads highlighted will be subject to a 30km/h school speed limit at certain times on school days.



Te Kura Kaupapa School

Main Rd

 School

School hours only

 30kph



Waikouaiti

TYPE OF CHANGE: SCHOOL

The roads highlighted will be subject to a 30km/h school speed limit at certain times on school days.



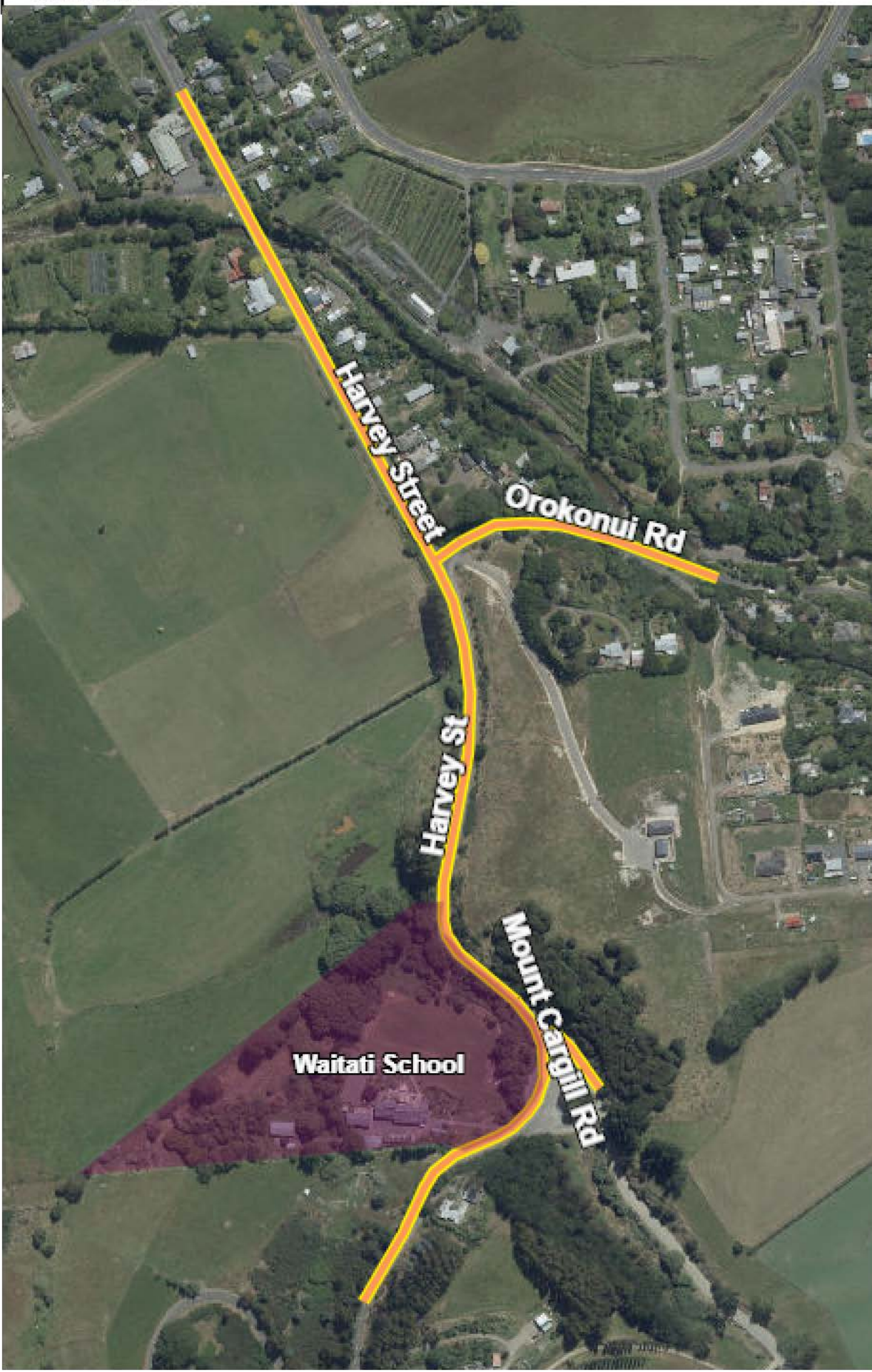
-  School
- School hours only**
-  30kph



Waitati

TYPE OF CHANGE: SCHOOL

The roads highlighted will be subject to a 30km/h school speed limit at certain times on school days.



 School

School hours only

 30kph



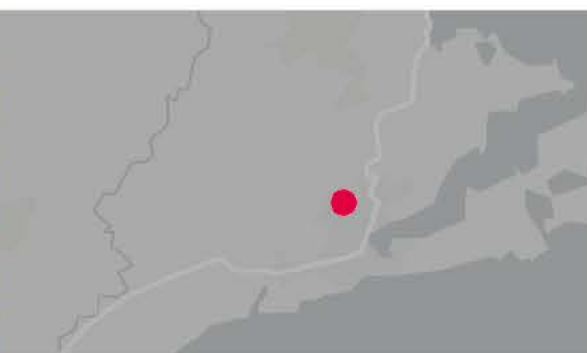
Wakari

TYPE OF CHANGE: SCHOOL

The roads highlighted will be subject to a 30km/h school speed limit at certain times on school days.



-  School
- School hours only**
-  30kph



Abbotsford

TYPE OF CHANGE: SCHOOL

The roads highlighted will be subject to a permanent 30km/h speed limit.



 School

All day

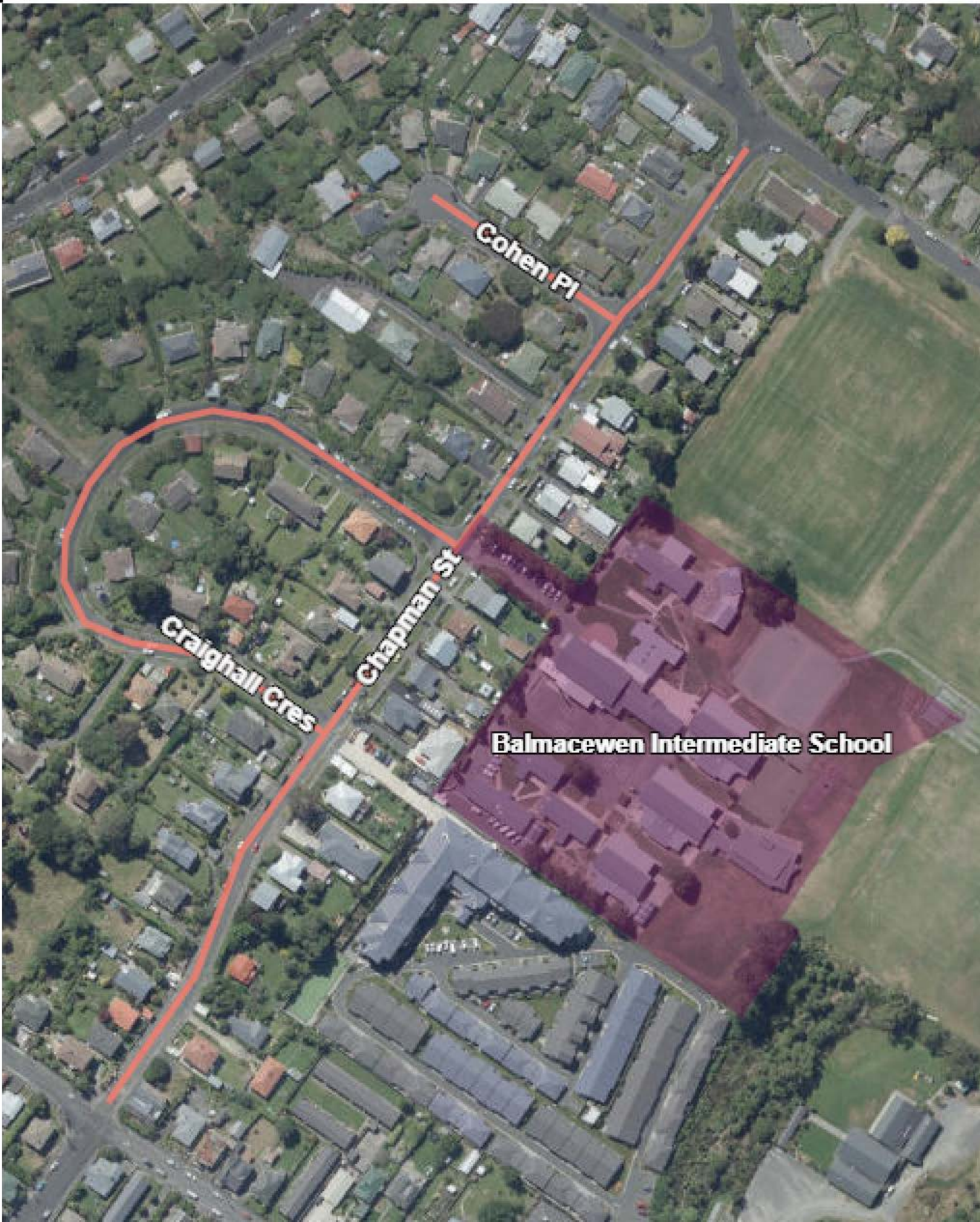
 30kph





Balmacewan Intermediate

TYPE OF CHANGE: SCHOOL

The road highlighted will be subject to a permanent speed limit of 30km/h.



-  School
- All day**
-  30kph





Big Rock

TYPE OF CHANGE: SCHOOL

The roads highlighted will be subject to a permanent 30km/h speed limit.



-  School
- All day**
-  30kph



Bradford

TYPE OF CHANGE: SCHOOL

The roads highlighted will be subject to a permanent 30km/h speed limit.



 School

All day

 30kph





Broad Bay

TYPE OF CHANGE: SCHOOL

The roads highlighted will be subject to a permanent 30km/h speed limit.



-  School
- All day**
-  30kph



Caversham



TYPE OF CHANGE: CENTRE
The roads highlighted will be subject to a permanent 30km/h speed limit.

-  School
- All day**
-  30kph





Concord

TYPE OF CHANGE: SCHOOL

The roads highlighted will be subject to a permanent 30km/h speed limit.



-  School
- All day**
-  30kph



Green Island

TYPE OF CHANGE: SCHOOL

The roads highlighted will be subject to a permanent 30km/h or 60km/h speed limit.



-  School
- All day**
-  30kph
-  60kph



Halfway Bush

TYPE OF CHANGE: SCHOOL

The roads highlighted will be subject to a permanent 30km/h speed limit.



 School

All day

 30kph



Karitāne

TYPE OF CHANGE: RESIDENTIAL

The roads highlighted will be subject to either a 10km/h or a 30km/h permanent speed limit.



-  School
- All day**
-  10kph
-  30kph





Macandrew Bay

TYPE OF CHANGE: SCHOOL

The roads highlighted will be subject to a permanent 30km/h speed limit.



-  School
- All day**
-  30kph



Māori Hill


TYPE OF CHANGE: CENTRE

The roads highlighted will be subject to either a permanent 30km/h speed limit or a 30km/h school speed limit at certain times on school days.



 School

All day

 30kph

School hours only

 30kph



The roads highlighted will be subject to a permanent 30 km/hr speed limit.



 School

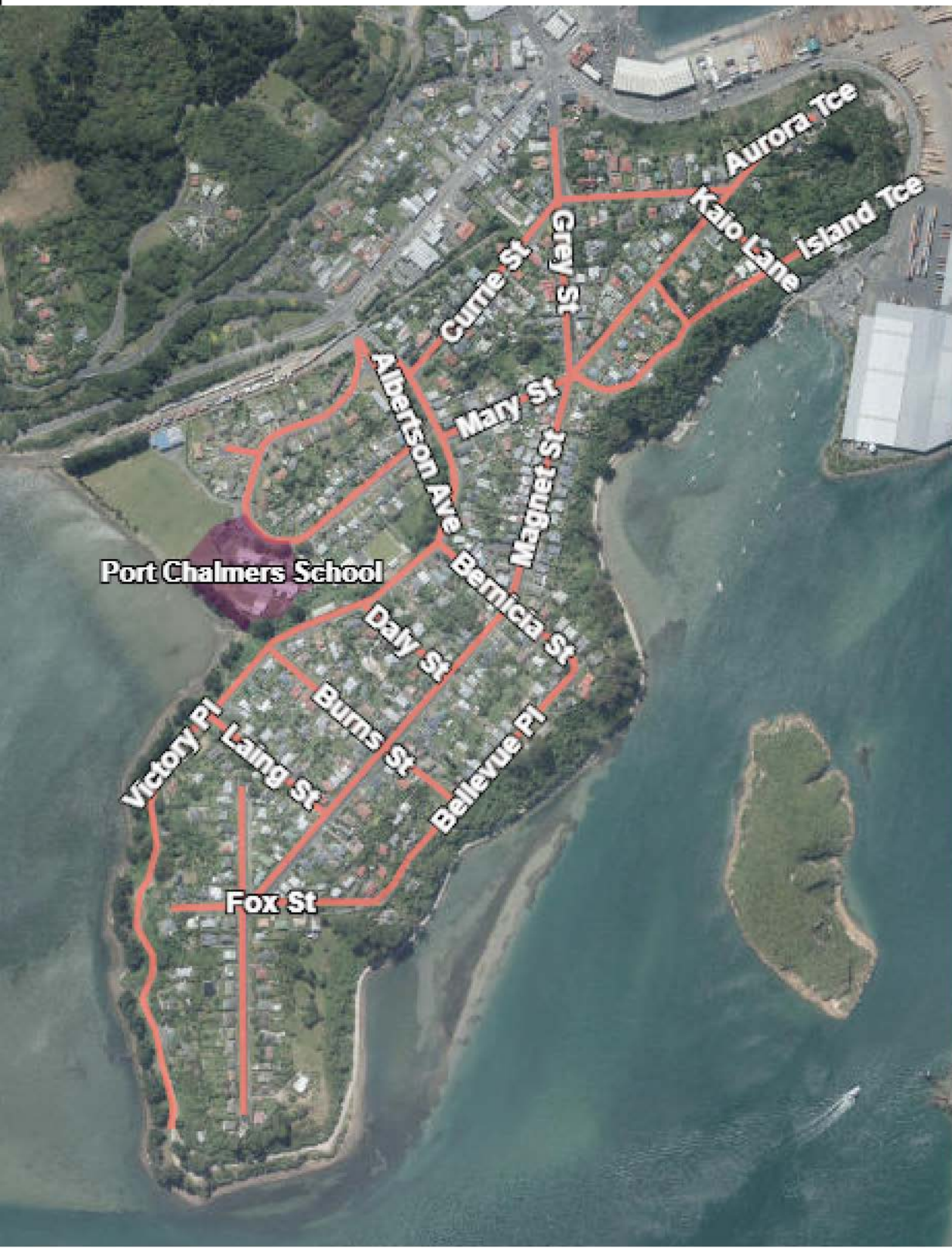
All day

 30kph



Port Chalmers

TYPE OF CHANGE: SCHOOL
The roads highlighted will be subject to a permanent 30km/h speed limit.



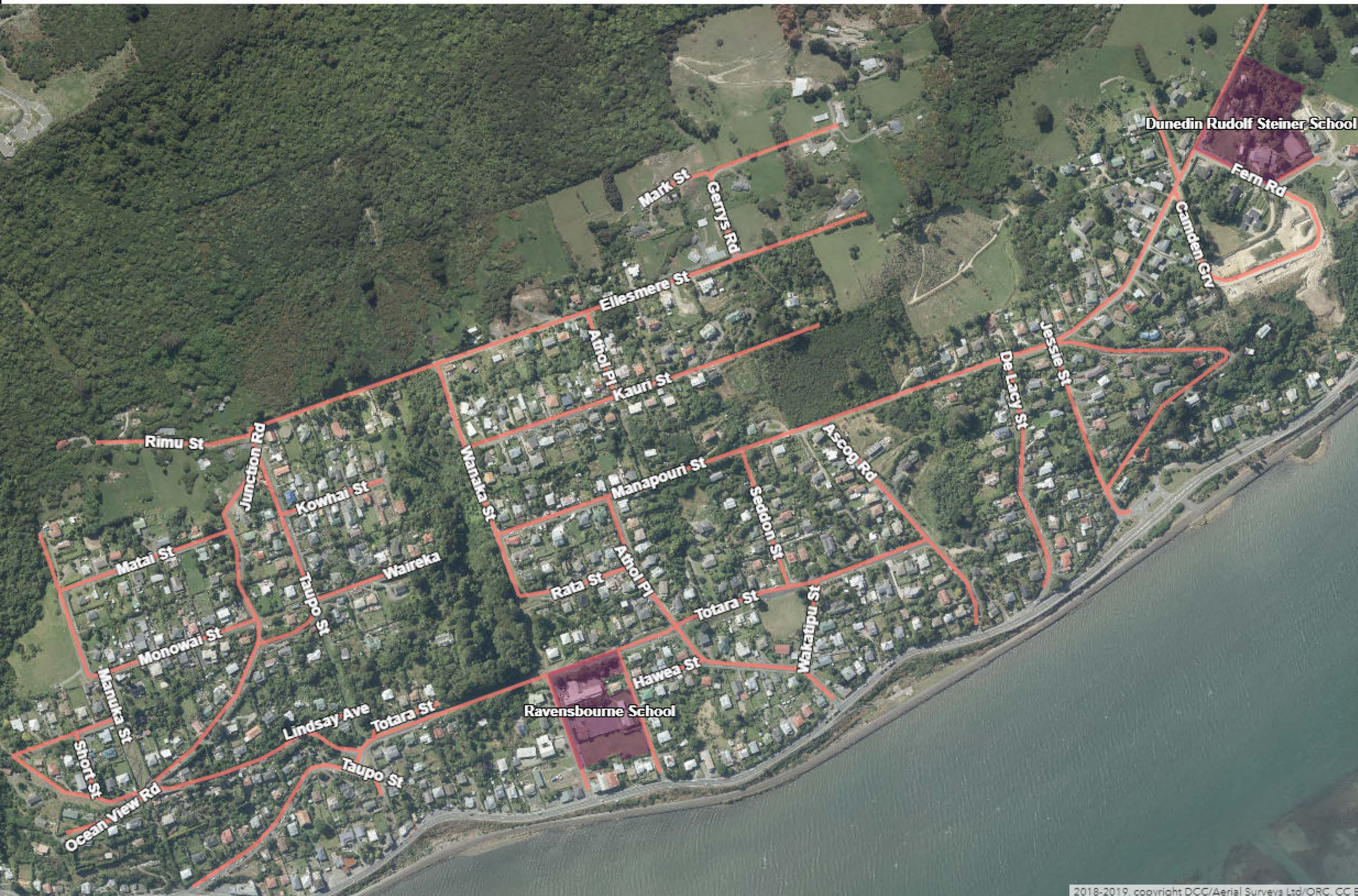
Port Chalmers School

-  School
- All day**
-  30kph



Ravensbourne, Rudolf Steiner

TYPE OF CHANGE: SCHOOL
The roads highlighted will be subject to a permanent 30km/h speed limit.



- School
- All day**
- 30kph



Sawyers Bay

TYPE OF CHANGE: SCHOOL

The road highlighted will be subject to a permanent speed limit of 30km/h.



Sawyers Bay School

Stevenson Ave



Constant St

Station Rd

Freyberg Ave

Duke St

Rolais Pl

-  School
- All day**
-  30kph



St Clair

TYPE OF CHANGE: SCHOOL

The roads highlighted will be subject to a permanent 30km/h speed limit.



 School

All day

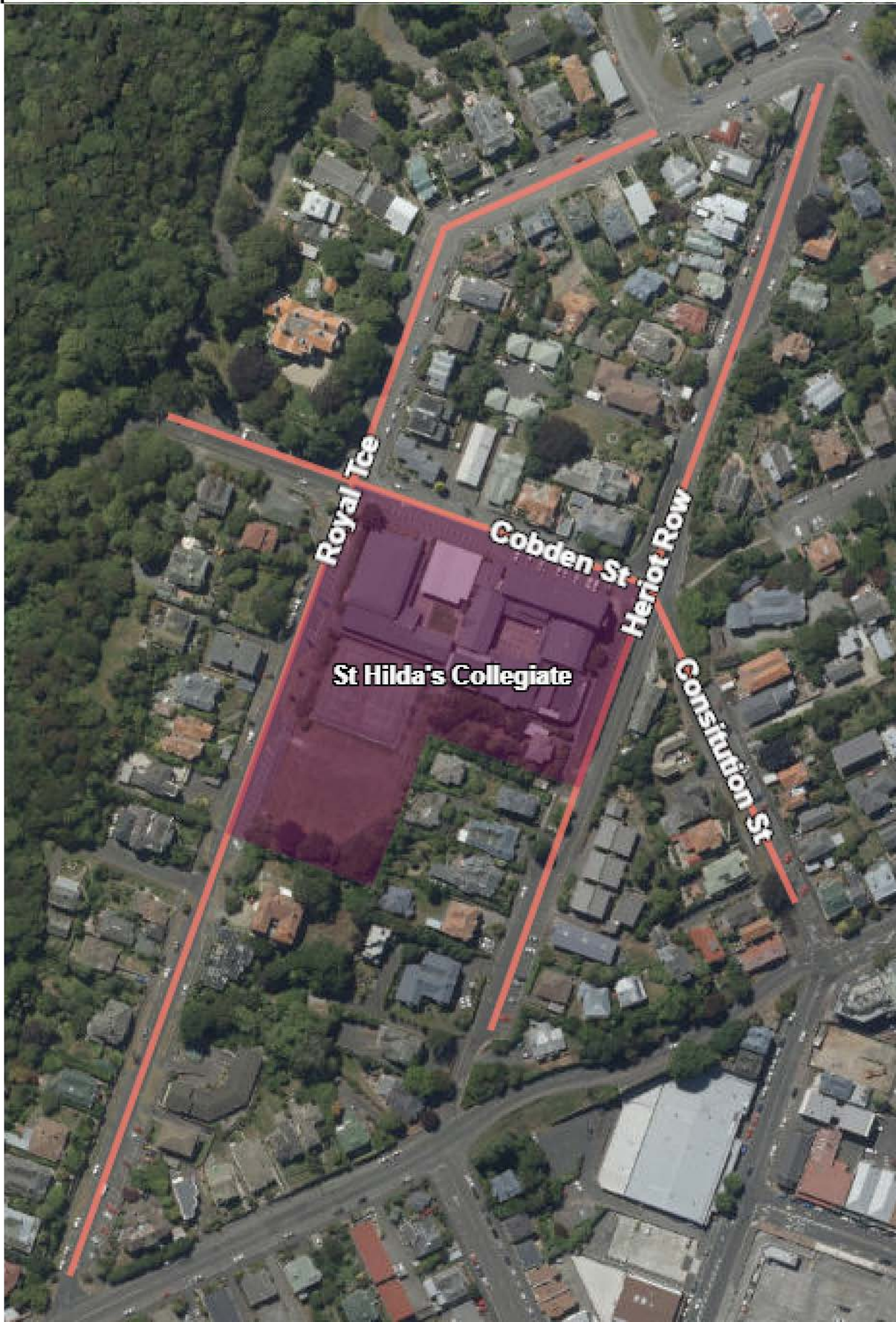
 30kph



St Hilda's Collegiate

TYPE OF CHANGE: SCHOOL

The road highlighted will be subject to a permanent speed limit of 30km/h.



 School

All day

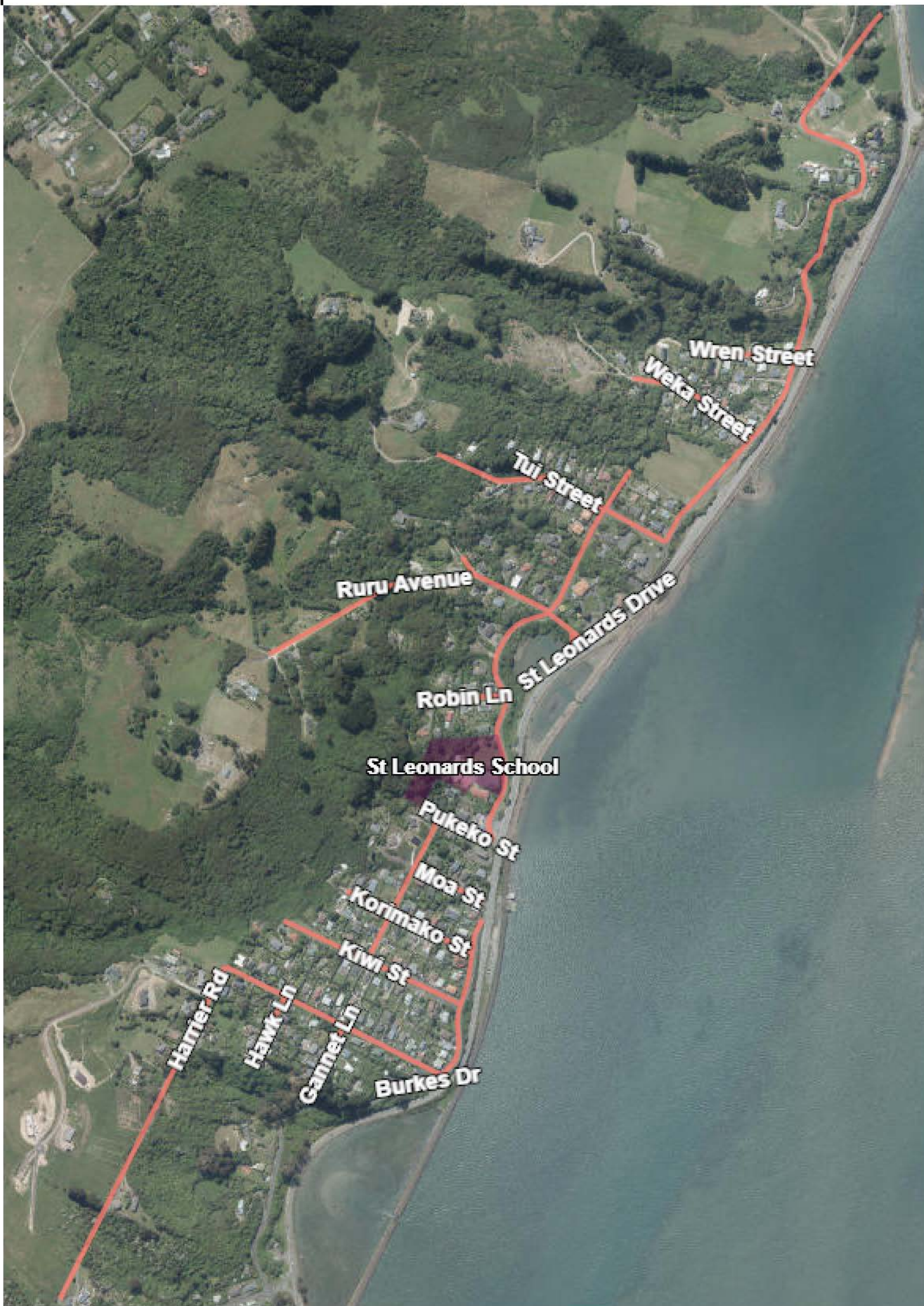
 30kph





St Leonards

TYPE OF CHANGE: SCHOOL

The roads highlighted will be subject to a permanent 30km/h speed limit.



-  School
- All day**
-  30kph






St Mary's (Dunedin)

TYPE OF CHANGE: SCHOOL

The roads highlighted will be subject to either a permanent 30km/h speed limit or a 30km/h school speed limit at certain times on school days.



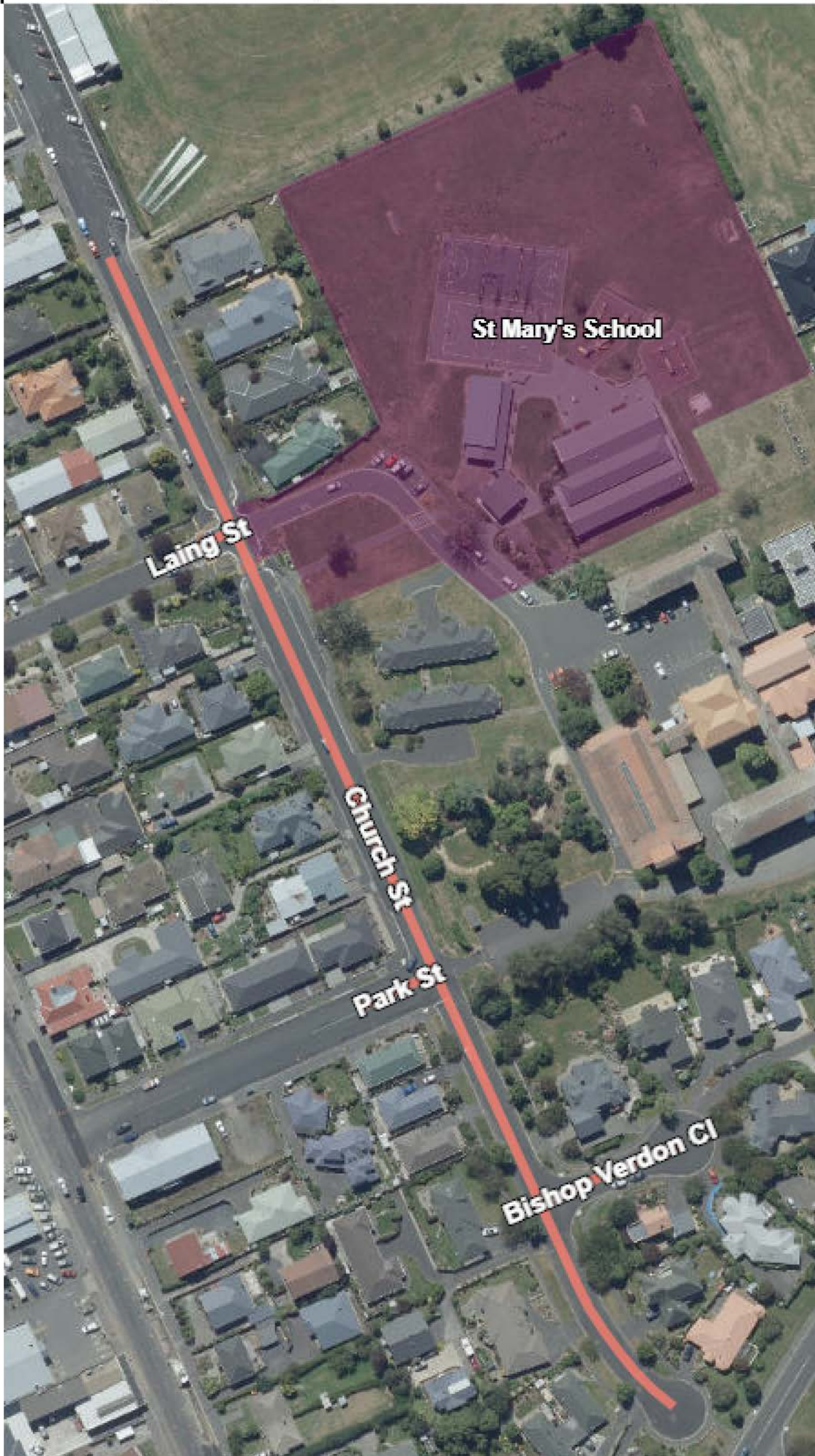
-  School
- All day**
-  30kph
- School hours only**
-  30kph



St Mary's (Mosgiel)

TYPE OF CHANGE: SCHOOL

The roads highlighted will be subject to a permanent 30km/h speed limit.



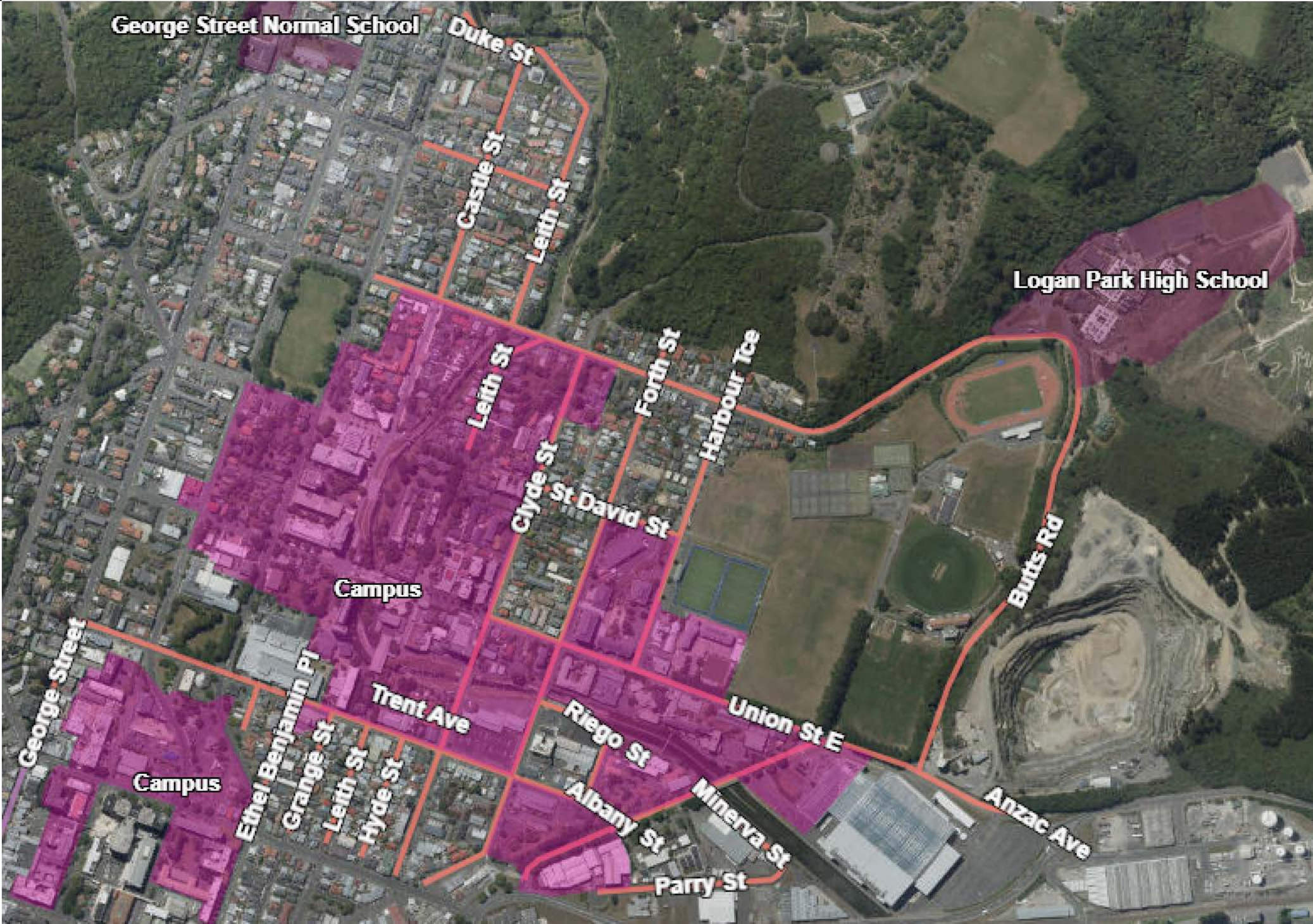
 School

All day

 30kph



Tertiary Precinct, Logan Park



TYPE OF CHANGE: CENTRE
The roads highlighted will be subject to a permanent 30km/h speed limit.

-  School
- All day**
-  30kph






Warrington

TYPE OF CHANGE: SCHOOL

The roads highlighted will be subject to a permanent 30km/h or 50km/h speed limit.



-  School
- All day**
-  30kph
-  50kph



Caversham



TYPE OF CHANGE: CENTRE
The roads highlighted will be subject to a permanent 30km/h speed limit.

-  School
- All day**
-  30kph



Māori Hill


TYPE OF CHANGE: CENTRE

The roads highlighted will be subject to either a permanent 30km/h speed limit or a 30km/h school speed limit at certain times on school days.



 School

All day

 30kph

School hours only

 30kph



Mornington



TYPE OF CHANGE: CENTRE

The roads highlighted will be subject to a permanent 30km/h speed limit.

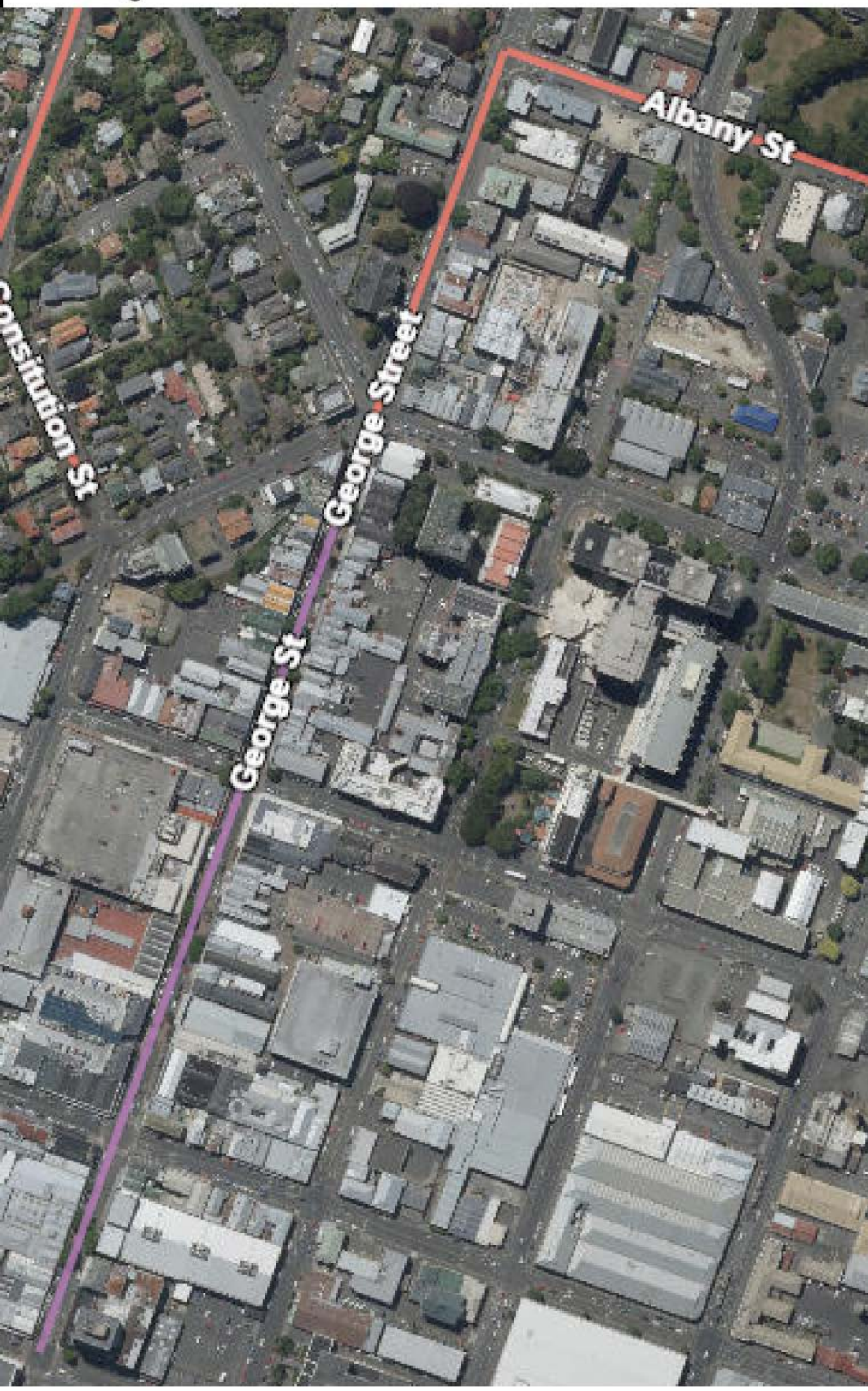
All day
30kph



George St

TYPE OF CHANGE: ROAD

The road highlighted will be subject to a permanent speed limit of 10km/h.



All day

- 10kph
- 30kph



Karitāne

TYPE OF CHANGE: RESIDENTIAL

The roads highlighted will be subject to either a 10km/h or a 30km/h permanent speed limit.



-  School
- All day**
-  10kph
-  30kph



Pūrākaunui, Osborne



TYPE OF CHANGE: ROAD

It is proposed that the existing 80km/h speed limit becomes 60km/h with a permanent 30km/h speed limit at Osborne and a 30km/h school speed limit at Pūrākaunui School operational at certain times on school days.

 School

All day

 30kph

 60kph

School hours only

 30kph



Appendix B - Schools within proposed permanent 30km/h speed zone

Abbotsford

TYPE OF CHANGE: SCHOOL

The roads highlighted will be subject to a permanent 30km/h speed limit.



Abbotsford School

North Taleni Rd

Hyslop St

Lambert St

McKinlay Rd

 School

All day

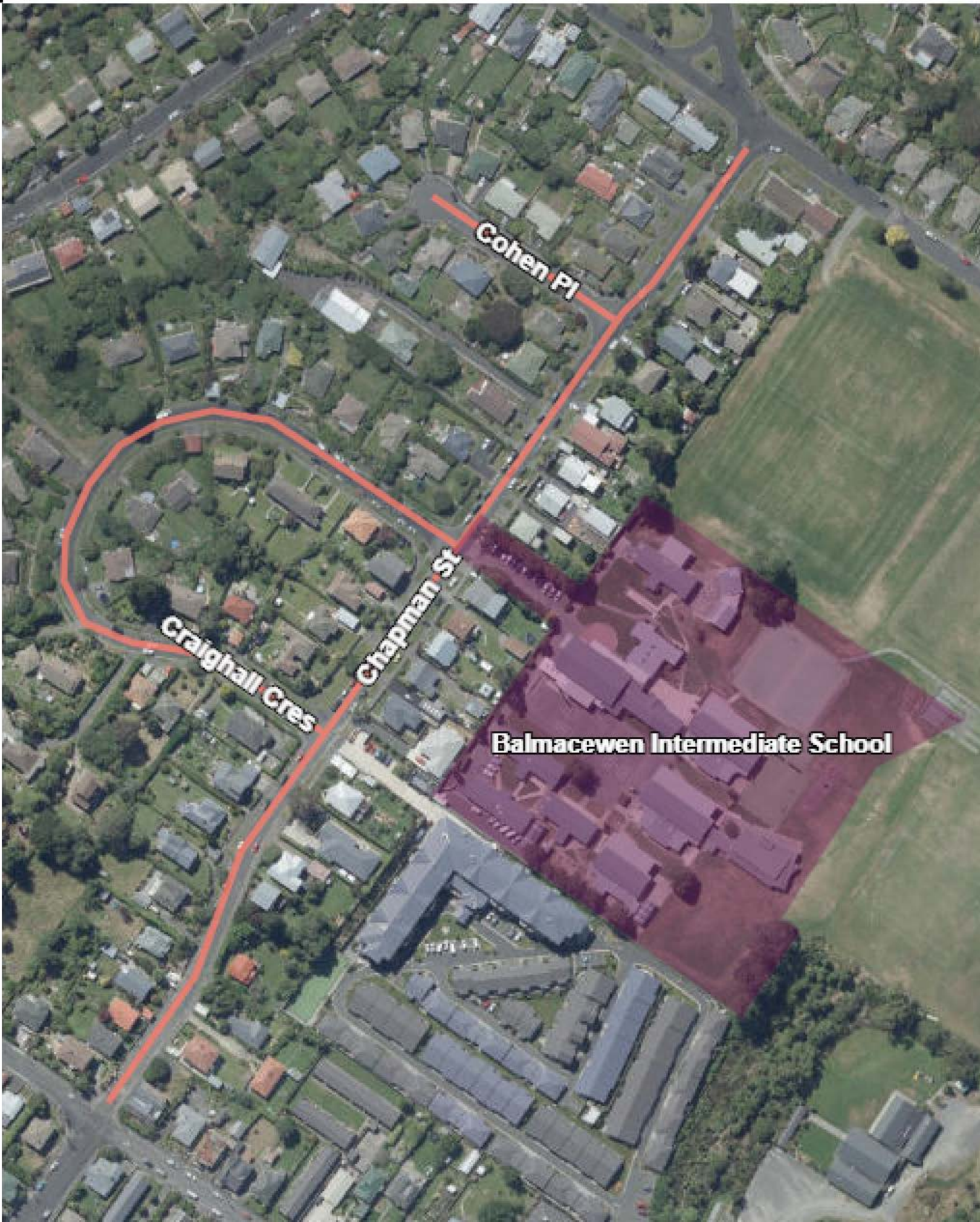
 30kph





Balmacewan Intermediate

TYPE OF CHANGE: SCHOOL

The road highlighted will be subject to a permanent speed limit of 30km/h.



-  School
- All day**
-  30kph





Big Rock

TYPE OF CHANGE: SCHOOL

The roads highlighted will be subject to a permanent 30km/h speed limit.



-  School
- All day**
-  30kph



Bradford

TYPE OF CHANGE: SCHOOL

The roads highlighted will be subject to a permanent 30km/h speed limit.



 School

All day

 30kph





Broad Bay

TYPE OF CHANGE: SCHOOL

The roads highlighted will be subject to a permanent 30km/h speed limit.



-  School
- All day**
-  30kph



Caversham



TYPE OF CHANGE: CENTRE
The roads highlighted will be subject to a permanent 30km/h speed limit.

-  School
- All day**
-  30kph



Concord

TYPE OF CHANGE: SCHOOL

The roads highlighted will be subject to a permanent 30km/h speed limit.



 School

All day

 30kph



Green Island

TYPE OF CHANGE: SCHOOL

The roads highlighted will be subject to a permanent 30km/h or 60km/h speed limit.



-  School
- All day**
-  30kph
-  60kph



Halfway Bush

TYPE OF CHANGE: SCHOOL

The roads highlighted will be subject to a permanent 30km/h speed limit.



 School

All day

 30kph



Karitāne

TYPE OF CHANGE: RESIDENTIAL

The roads highlighted will be subject to either a 10km/h or a 30km/h permanent speed limit.



-  School
- All day**
-  10kph
-  30kph





Macandrew Bay

TYPE OF CHANGE: SCHOOL

The roads highlighted will be subject to a permanent 30km/h speed limit.



-  School
- All day**
-  30kph



Māori Hill


TYPE OF CHANGE: CENTRE

The roads highlighted will be subject to either a permanent 30km/h speed limit or a 30km/h school speed limit at certain times on school days.



 School

All day

 30kph

School hours only

 30kph



The roads highlighted will be subject to a permanent 30 km/hr speed limit.



 School

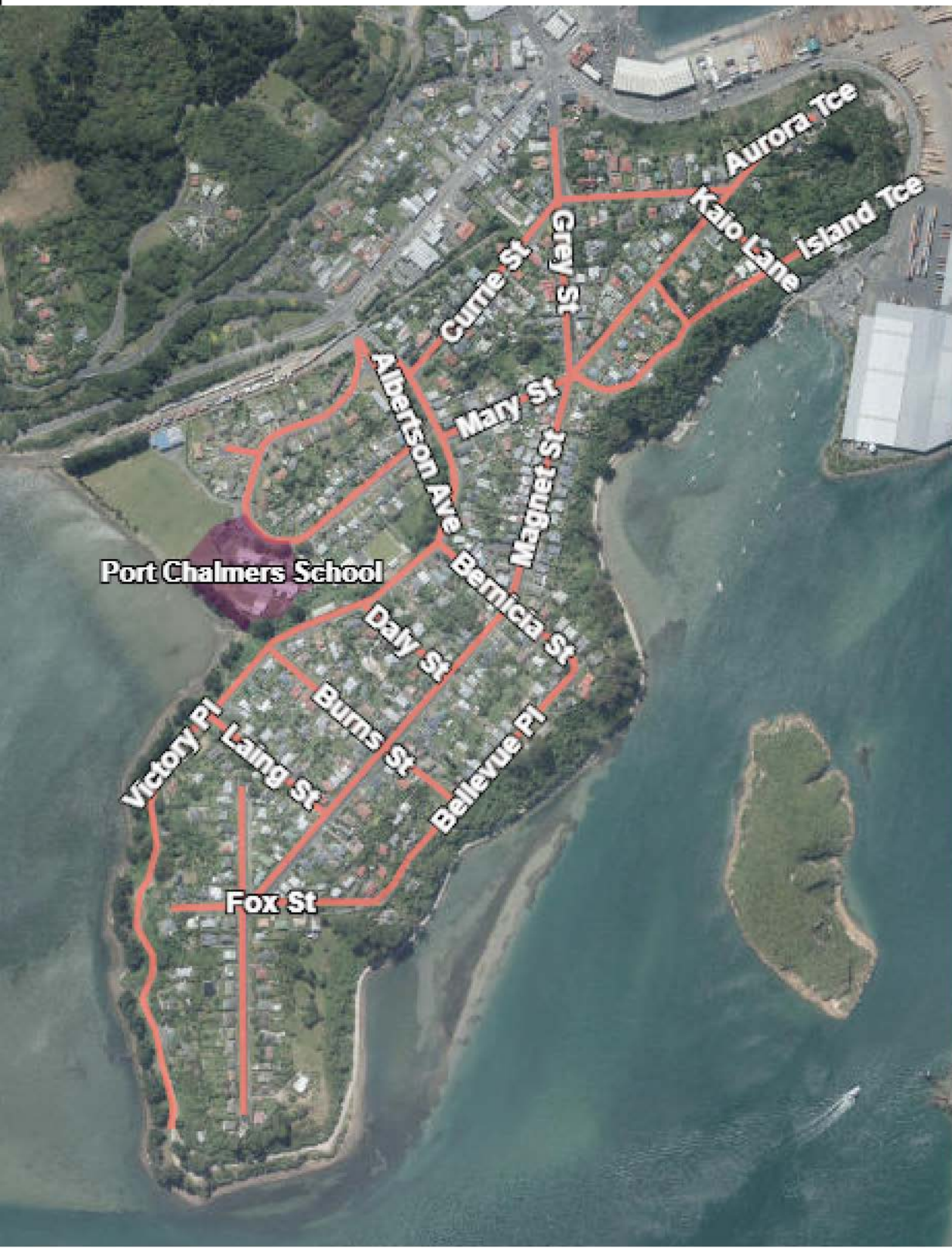
All day

 30kph



Port Chalmers

TYPE OF CHANGE: SCHOOL
The roads highlighted will be subject to a permanent 30km/h speed limit.



Port Chalmers School

-  School
- All day**
-  30kph



Sawyers Bay

TYPE OF CHANGE: SCHOOL

The road highlighted will be subject to a permanent speed limit of 30km/h.



Sawyers Bay School

Stevenson Ave



Constant St

Station Rd

Freyberg Ave

Duke St

Rolais Pl

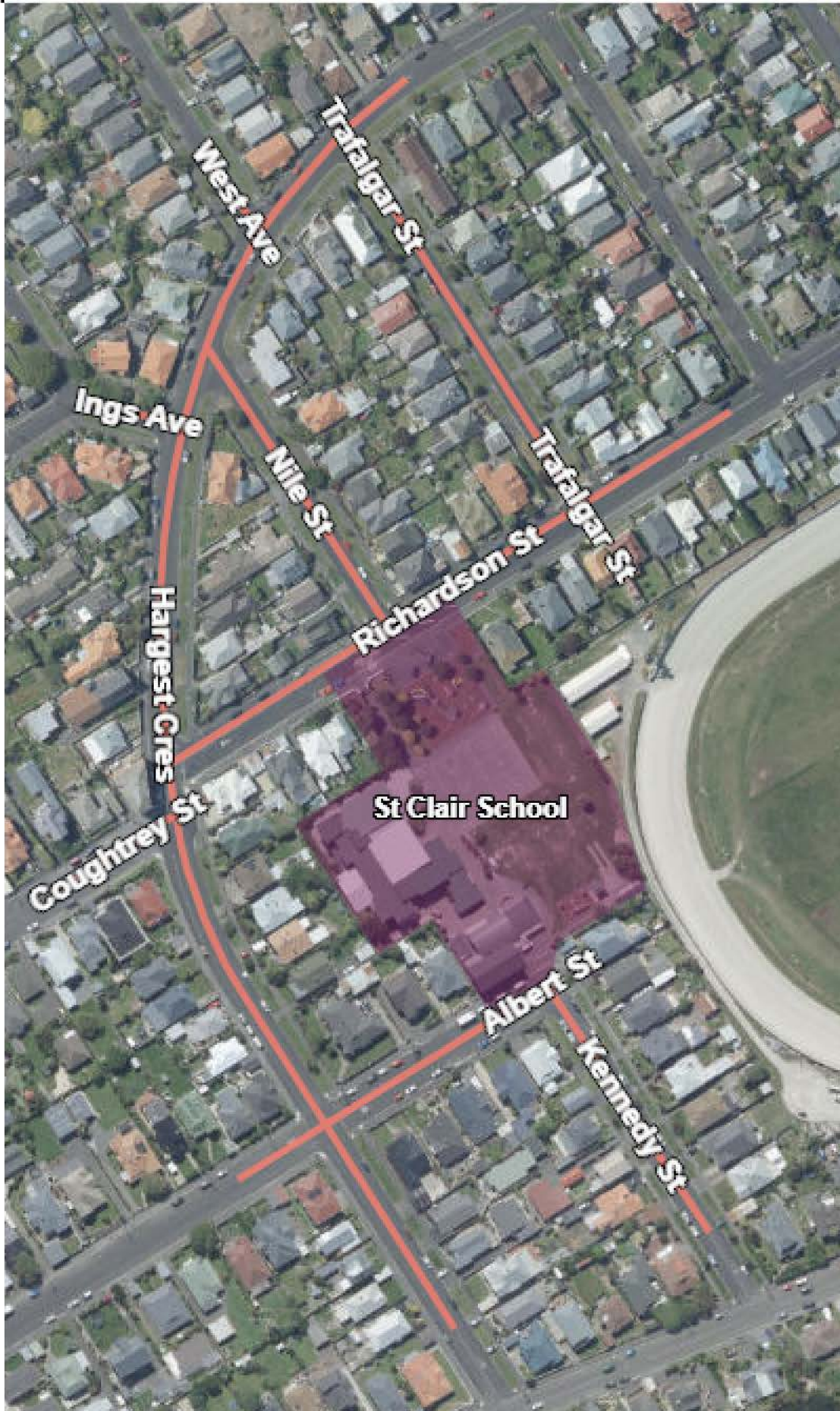
-  School
- All day**
-  30kph



St Clair

TYPE OF CHANGE: SCHOOL

The roads highlighted will be subject to a permanent 30km/h speed limit.



 School

All day

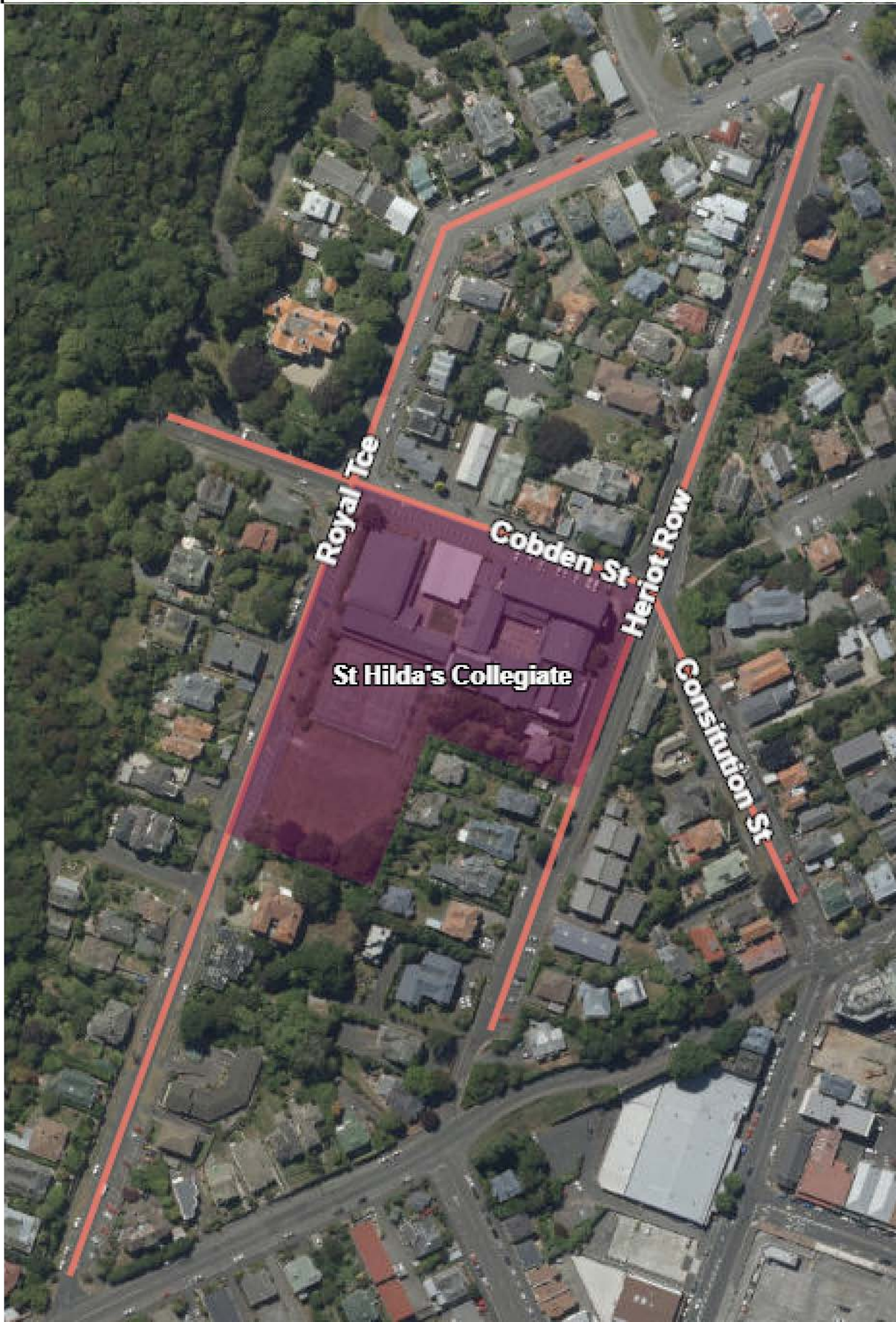
 30kph



St Hilda's Collegiate

TYPE OF CHANGE: SCHOOL

The road highlighted will be subject to a permanent speed limit of 30km/h.



 School

All day

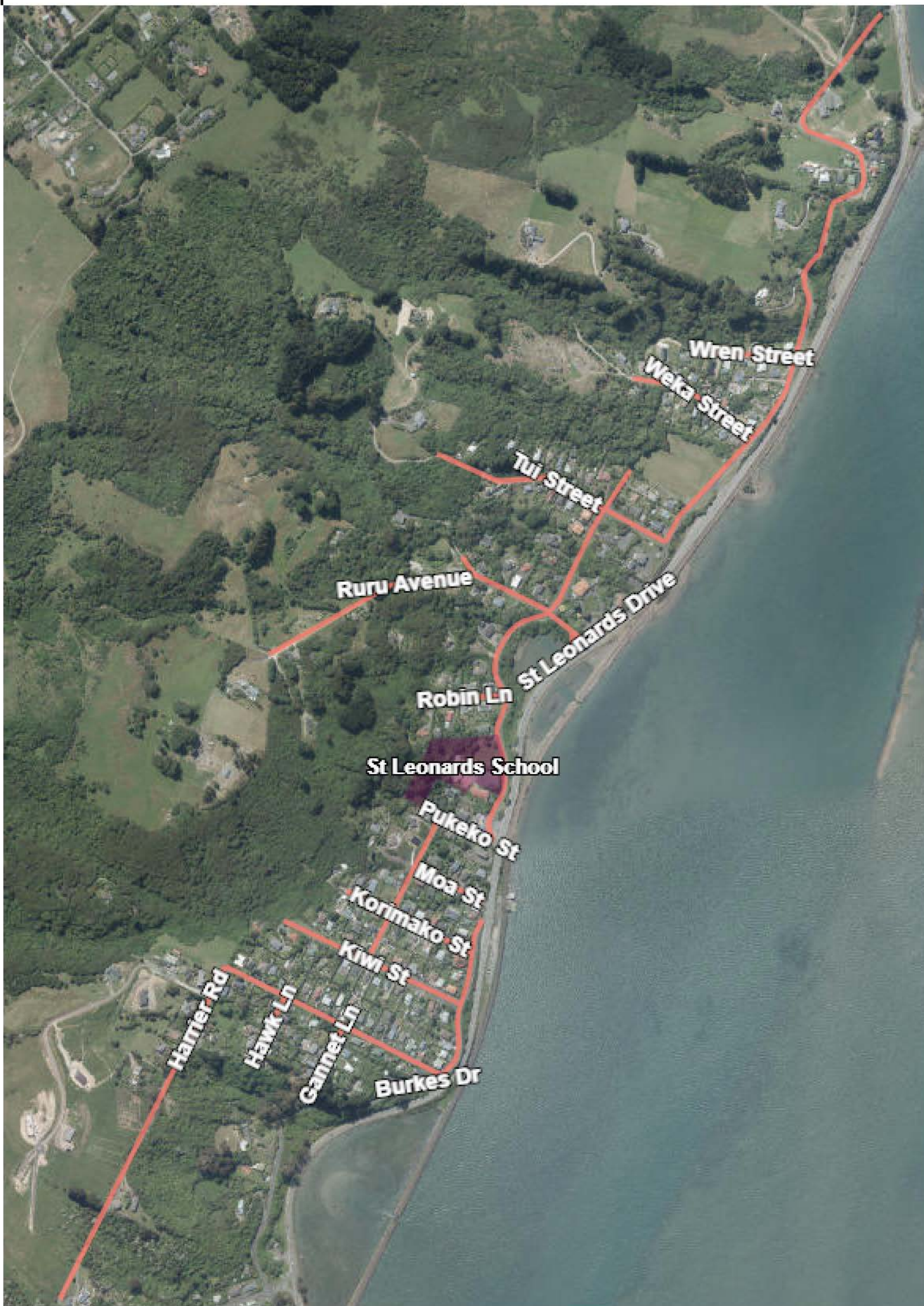
 30kph





St Leonards

TYPE OF CHANGE: SCHOOL

The roads highlighted will be subject to a permanent 30km/h speed limit.



-  School
- All day**
-  30kph






St Mary's (Dunedin)

TYPE OF CHANGE: SCHOOL

The roads highlighted will be subject to either a permanent 30km/h speed limit or a 30km/h school speed limit at certain times on school days.



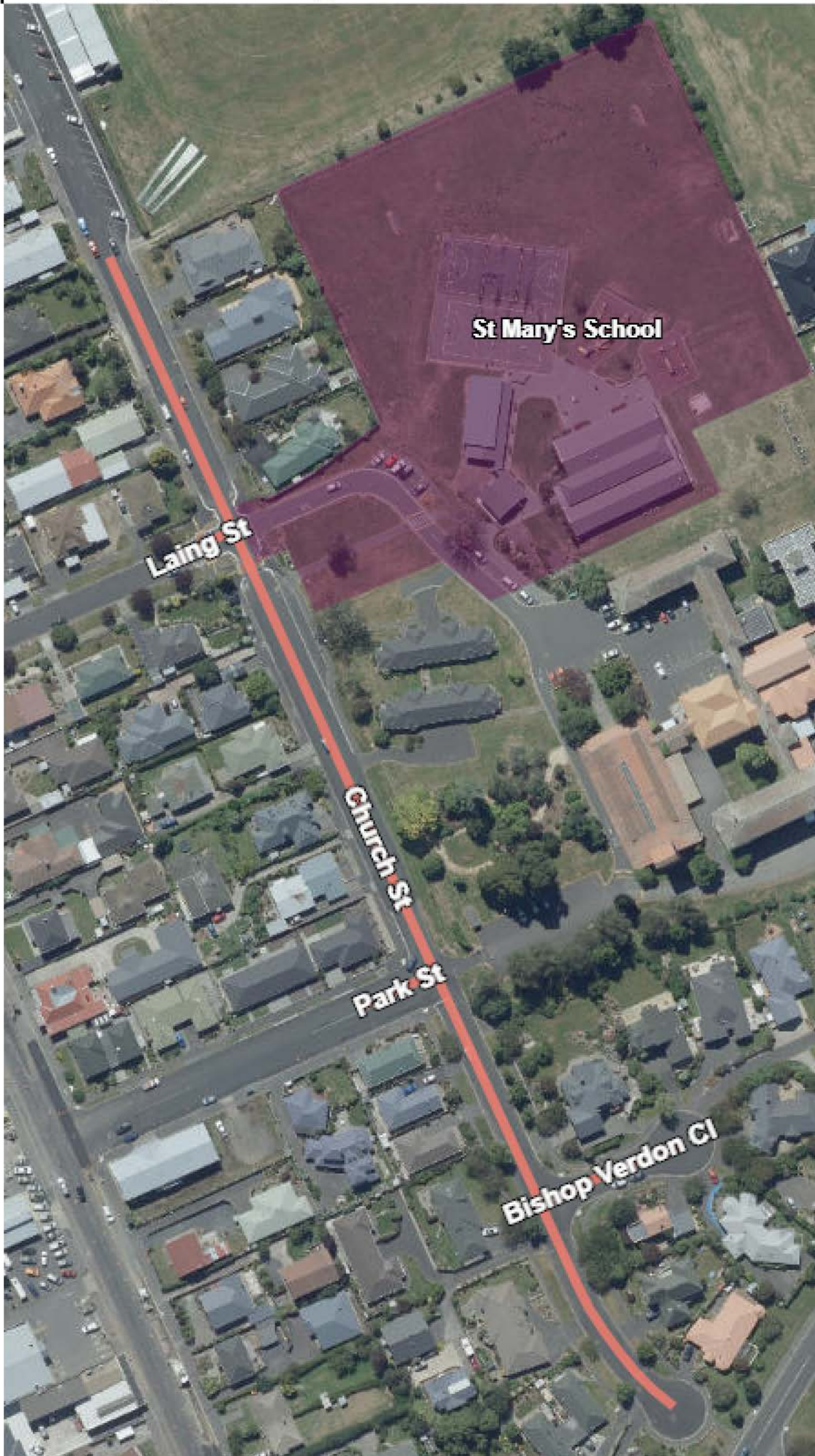
-  School
- All day**
-  30kph
- School hours only**
-  30kph



St Mary's (Mosgiel)

TYPE OF CHANGE: SCHOOL

The roads highlighted will be subject to a permanent 30km/h speed limit.



 School

All day

 30kph



Appendix C – Urban Centres

Caversham



TYPE OF CHANGE: CENTRE
The roads highlighted will be subject to a permanent 30km/h speed limit.

-  School
- All day**
-  30kph



Māori Hill


TYPE OF CHANGE: CENTRE

The roads highlighted will be subject to either a permanent 30km/h speed limit or a 30km/h school speed limit at certain times on school days.



 School

All day

 30kph

School hours only

 30kph



Mornington

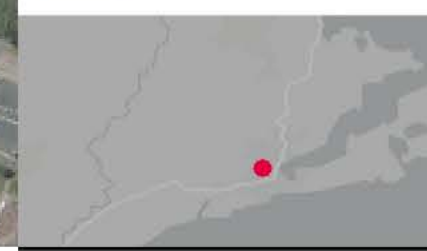


TYPE OF CHANGE: CENTRE

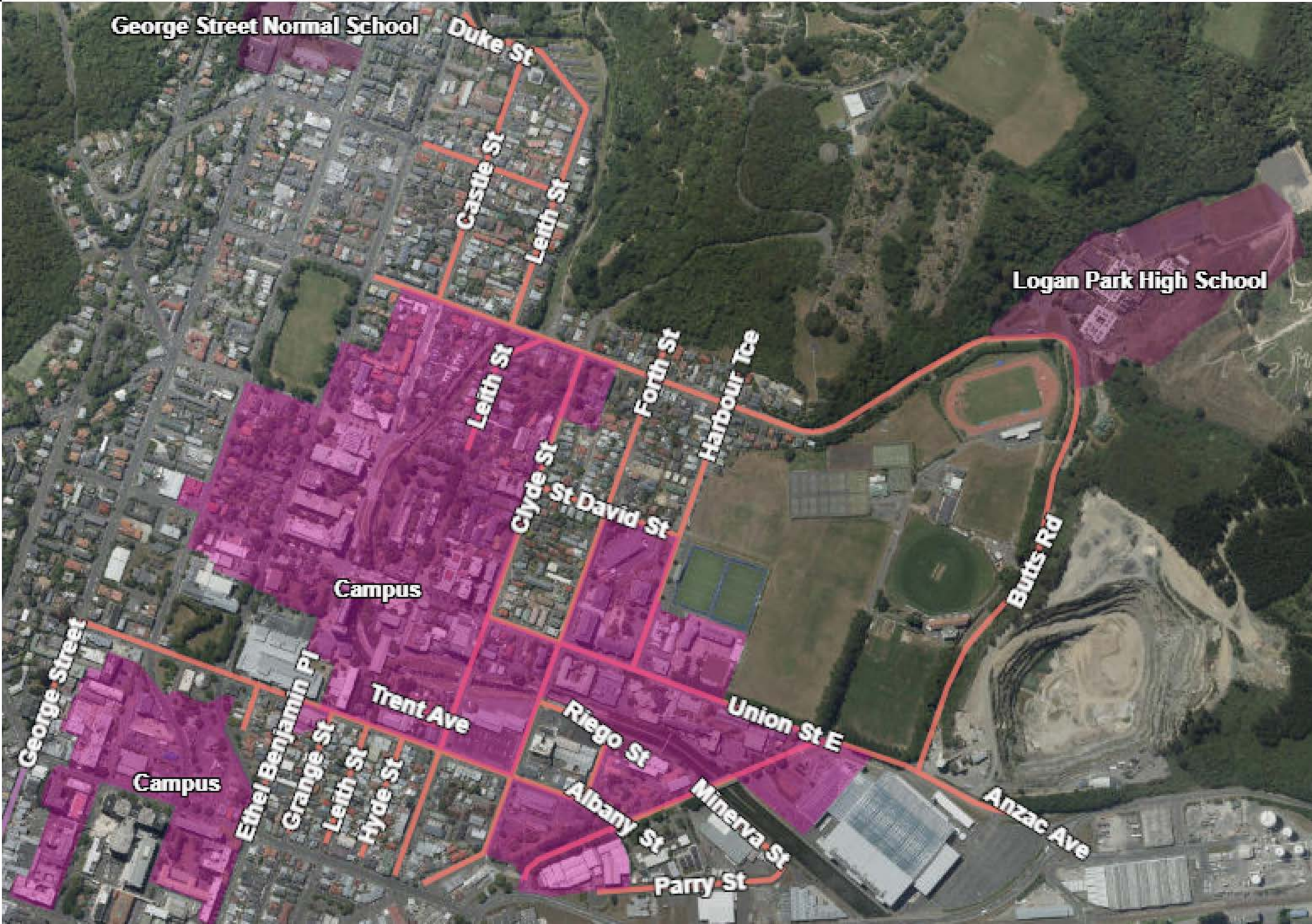
The roads highlighted will be subject to a permanent 30km/h speed limit.

All day

30kph



Tertiary Precinct, Logan Park



TYPE OF CHANGE: CENTRE
The roads highlighted will be subject to a permanent 30km/h speed limit.

-  School
- All day**
-  30kph

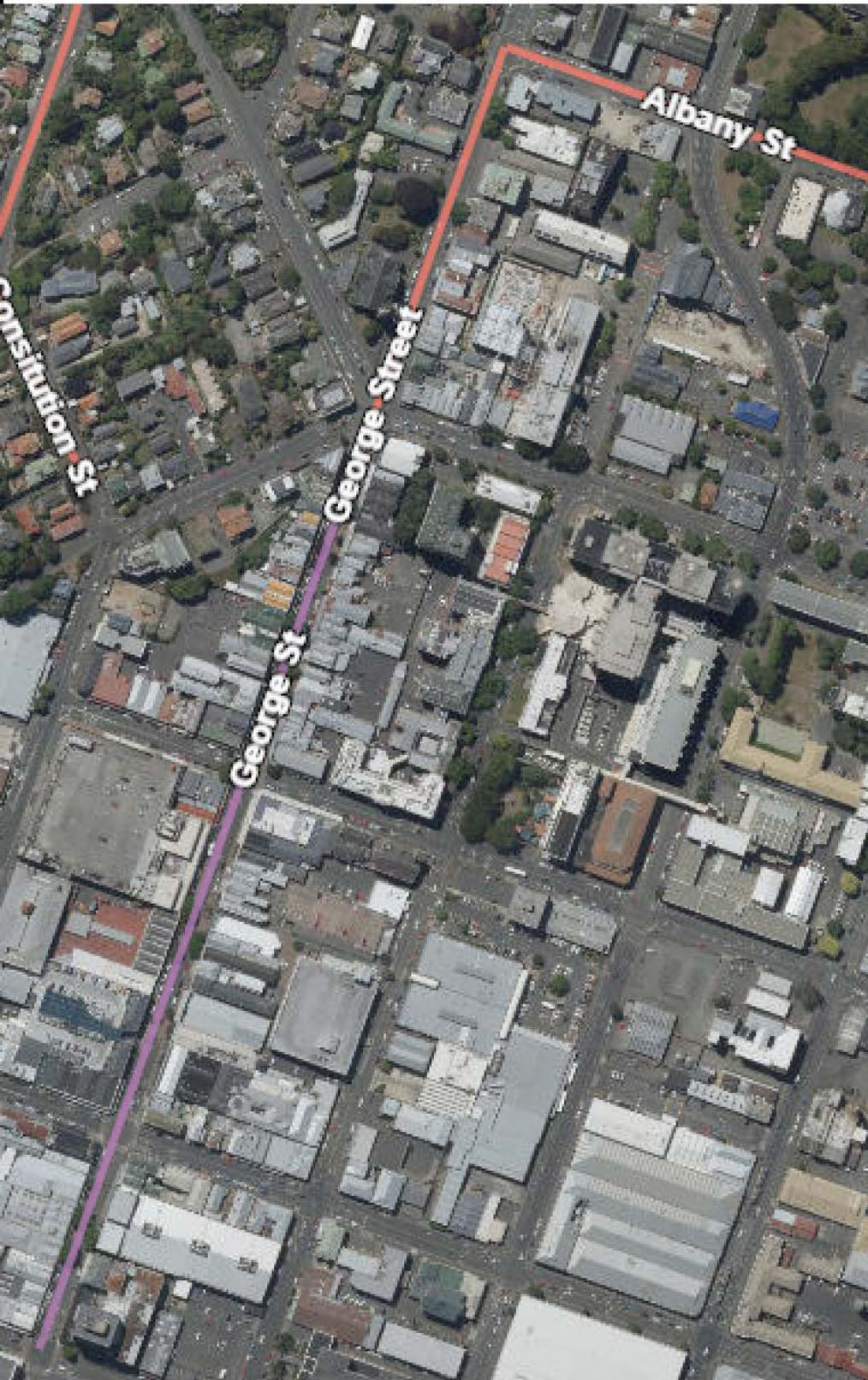


Appendix D - City Centre low speed zone

George St

TYPE OF CHANGE: ROAD

The road highlighted will be subject to a permanent speed limit of 10km/h.



All day

— 10kph

— 30kph



Appendix E – Karitāne and Pūrākanui

Karitāne

TYPE OF CHANGE: RESIDENTIAL

The roads highlighted will be subject to either a 10km/h or a 30km/h permanent speed limit.



-  School
- All day**
-  10kph
-  30kph



Pūrākaunui, Osborne



TYPE OF CHANGE: ROAD

It is proposed that the existing 80km/h speed limit becomes 60km/h with a permanent 30km/h speed limit at Osborne and a 30km/h school speed limit at Pūrākaunui School operational at certain times on school days.

 School

All day

 30kph

 60kph

School hours only

 30kph

