

AMDS updates

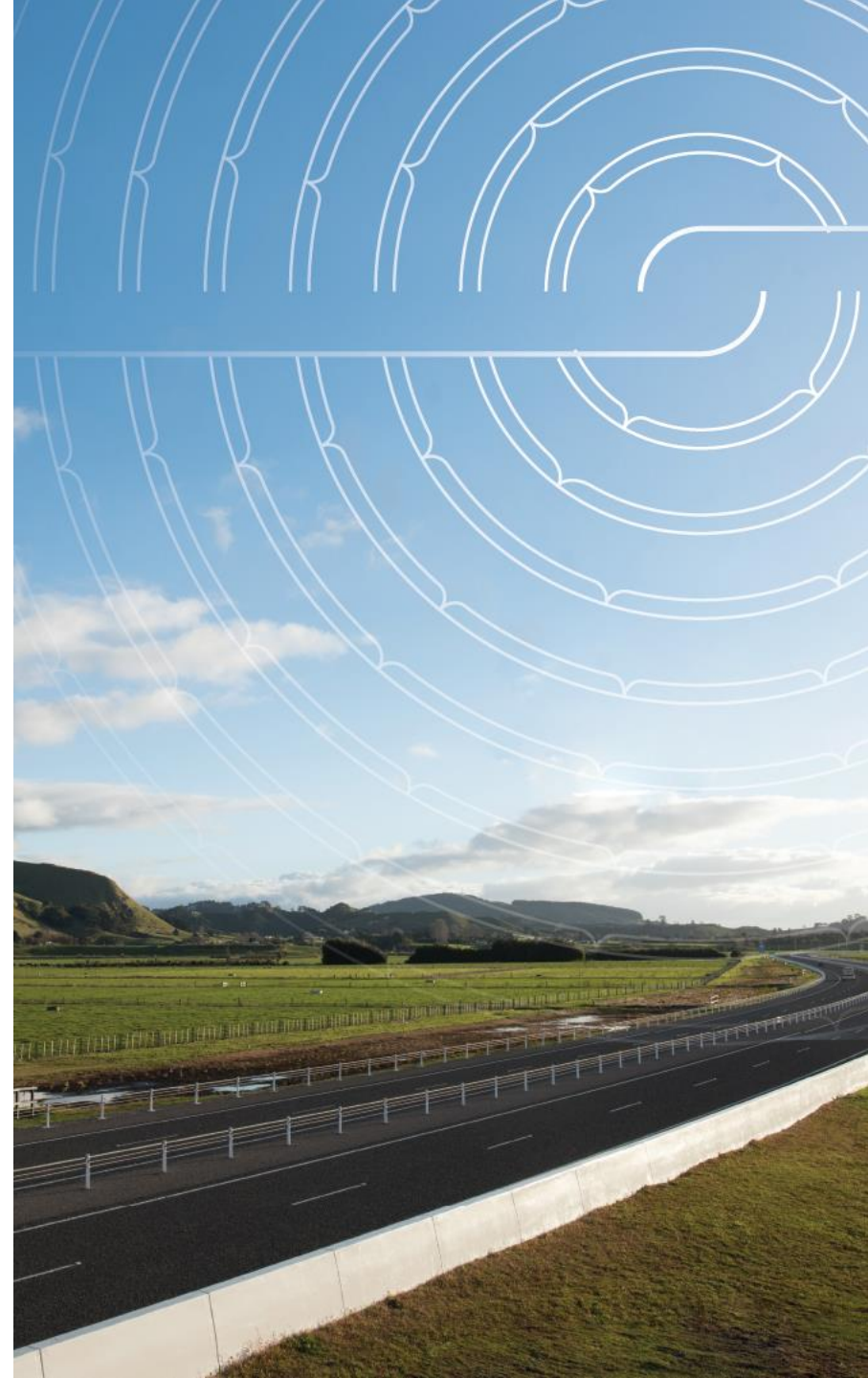
November 2022

Today we'll cover:

1. Updates on the wider AMDS programme
2. The Data Standard – what's new?
3. Implementation progress and lessons learned from tranche 1
4. Data principles and quality checks
5. Training and feedback
6. An external perspective – Jeremy, Company X
7. Next steps, and Q&A

Programme updates

- AMDS Release 1
- Ongoing AMDS development
- AMDS Multi-Modal Network Model
- Tranche 1 RCA implementations
- Waka Kotahi Tranche 5 preparations
- Transition to BAU



Data standard

AMDS development

Recent releases:

- Geometry guidance
- Network model and relationship diagram

Refer to [release version 1.0 on the AMDS website](#).

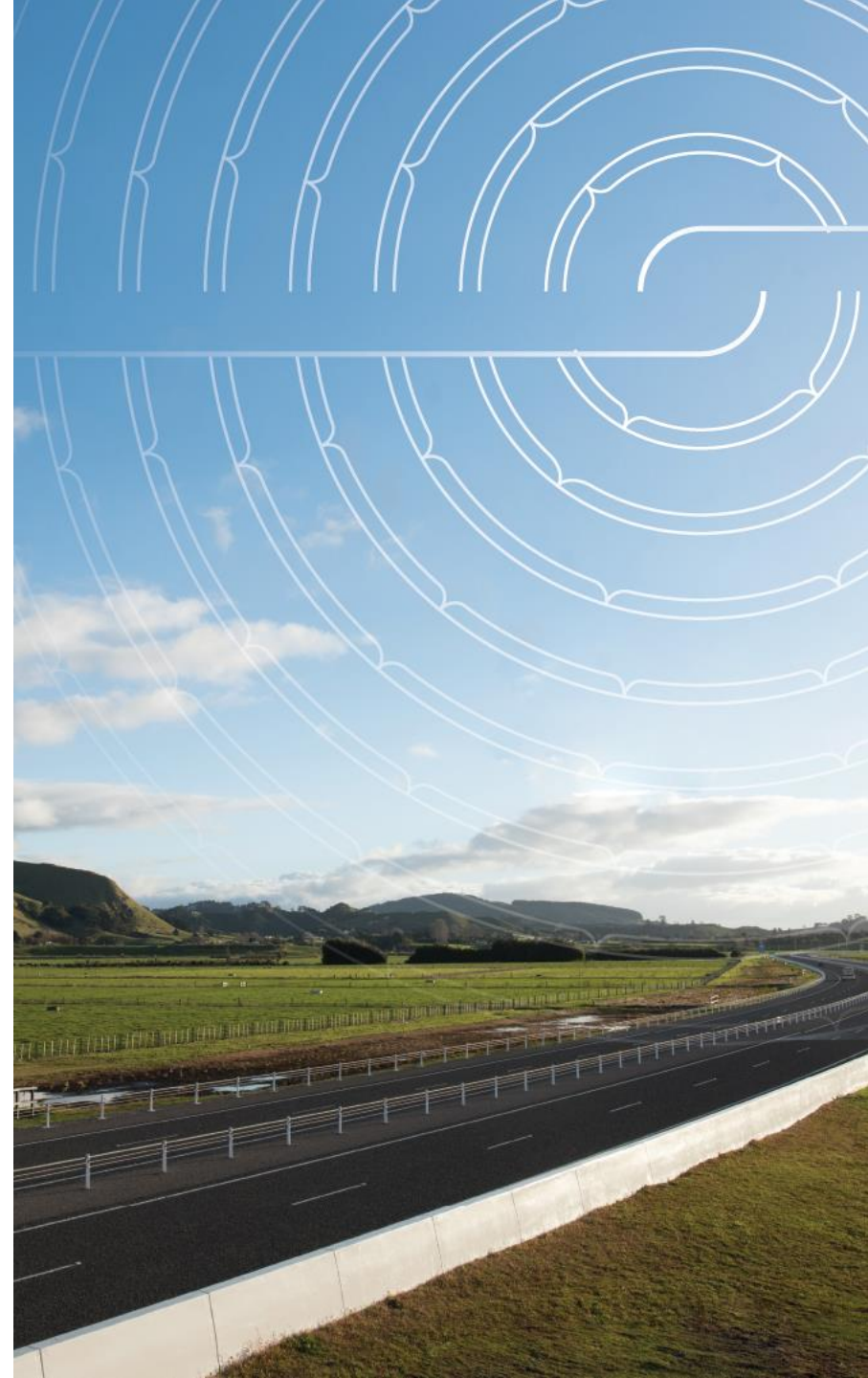
Consultation with sector to begin on:

- Resource efficiency (environmental outcome type)
- Forward works

Feedback can still be submitted to amds@nzta.govt.nz

AMDS development

Phases	Date
Forward works lifecycle	January 2023
Demand	January 2023
Network model – phase 2	July 2023
Network model – phase 3 (simple network - road)	June 2024
Performance and utilisation	July 2023
Environmental outcome types	February 2023





DELIVERY APPROACH

- Agile
- Incremental value creation
- Network model will be published in batches – the grouping/priority will be defined in partnership with the sector
- Network model will be published via Waka Kotahi's Open Data Portal

BUSINESS PROBLEMS

- The NZ transport sector does not have a national view of the network that can be shared or manipulated
- Current models are segmented and do not represent how customers use the network
- Restrictions on how current data sets can be used
- Unable to visualise how infrastructure services different modes of transport
- Current models do not show an asset view of modes on the network
- Unable to identify the infrastructure that supports public transport

KEY STAKEHOLDERS

- Waka Kotahi, RCAs, LINZ, NZ Police, Fire & Emergency NZ
- Key users: asset planners, asset engineers & data analysts

2023
Consultant engaged to develop network model

Simple network model - Roads

2024
Cycleways & pathways layer

Public transport layer

OUTCOMES

<p>Simple network model - roads</p> <ul style="list-style-type: none"> ➤ First coherent network model for NZ ➤ Cross boundary planning enabled ➤ Data and model can be accessed by the sector without restrictions ➤ Future planned networks can be visualised (where data exists) ➤ Consistent foundation for other data to be overlayed, e.g. ONF, network and performance, level of services, etc. ➤ Consistent analysis and reports – same base data ➤ Customer journey (by road) can be visualised 	<p>Cycleways & pathways layer</p> <ul style="list-style-type: none"> ➤ Can understand the quality of a multi modal customer journey 	<p>Public transport layer</p> <ul style="list-style-type: none"> ➤ Can include public transport in the analysis of multi modal customer journeys ➤ Can visualise the roading infrastructure used by public transport providers.
---	---	--

OPPORTUNITIES

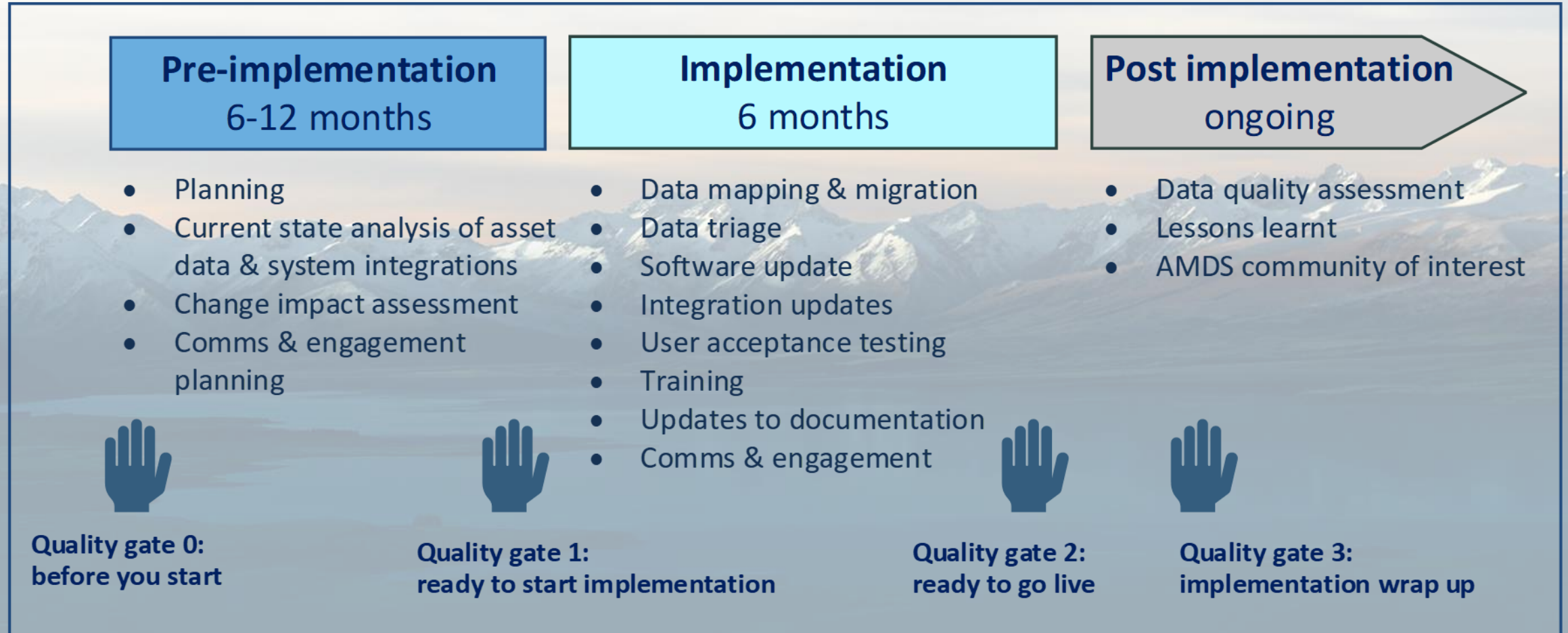
- National model which can be used by the sector, rather than regionally based
- Additional data layers can be overlayed, e.g. traffic counts, speed limits
- Provides the foundation for a digital twin to be developed

CONSULTATION

- 1. Business ownership and maintenance of the network model needs to be confirmed**
 - Conversations are underway within Waka Kotahi
 - Process, roles and responsibilities will be defined by the project
- 2. Engage with RCAs in relation to approach and data sharing**
 - A targeted engagement strategy will be developed and tested early with a sub-set of RCAs. Existing reference groups and industry groups will be used to champion the benefits.
 - Work is underway to define the scope and purpose of what data needs to be shared, and maintenance requirements.

Implementation update

Implementation framework



Tools developed

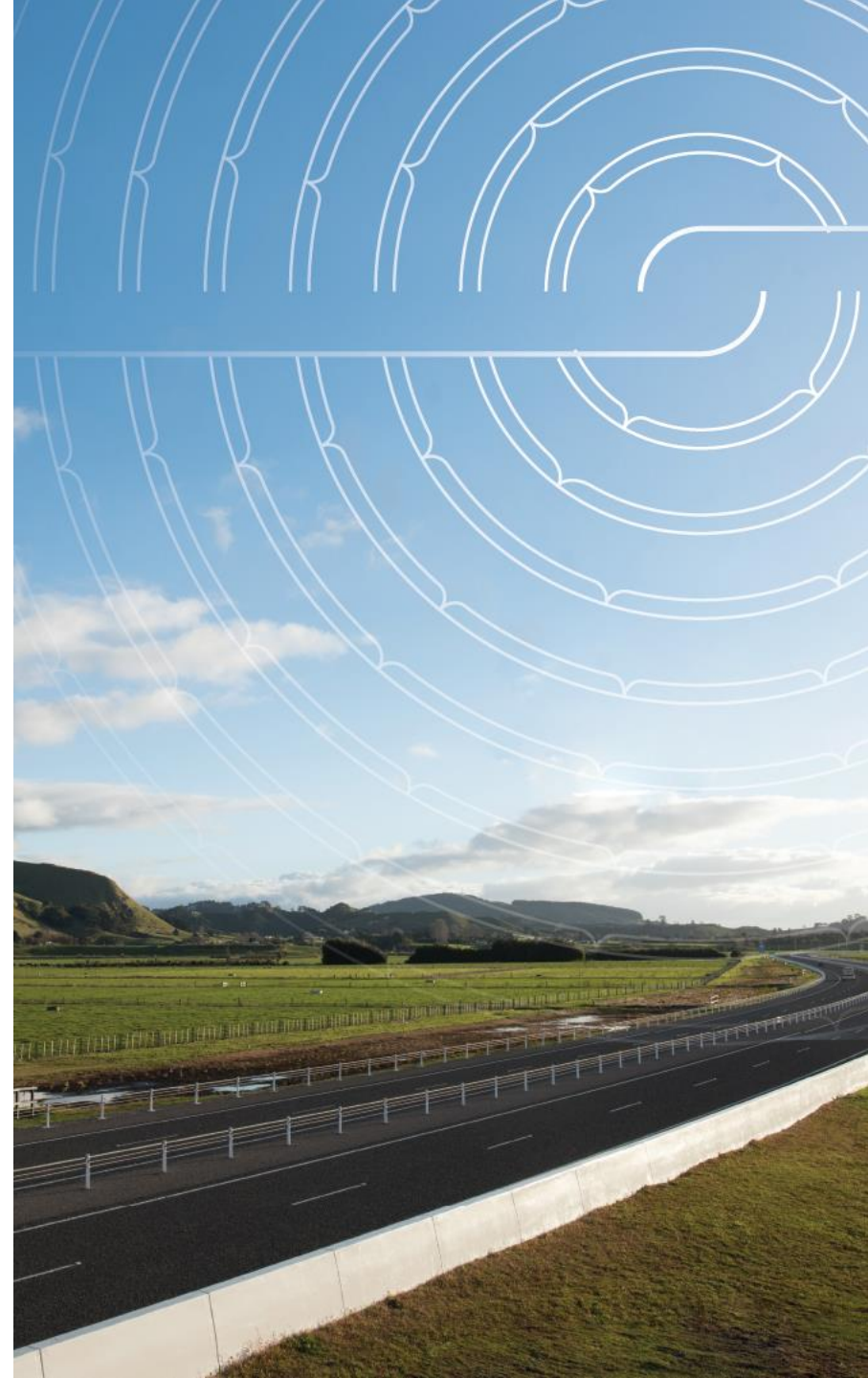
- **Playbook** - recommended implementation approach & guidance for RCAs
- **Implementation templates and checklists** - to help RCAs plan and manage implementation
- **Data migration scripts and tables** – generic scripts that form the base migration process
- **Triage report** - identifies fields in the RCA database that are not required by AMDS and if these fields are populated with data
- **Data quality assurance (DQA) report** - shows data that does not conform with AMDS
- **Supplier information pack** - guidance for suppliers to help plan for implementing AMDS within their organisation

Key migration principles

1. RCAs will not lose any data
2. The data mapping process does not guess, assume or estimate.

If there is no clear source of data, it will be left empty (NULL) or False or 0 (Zero).

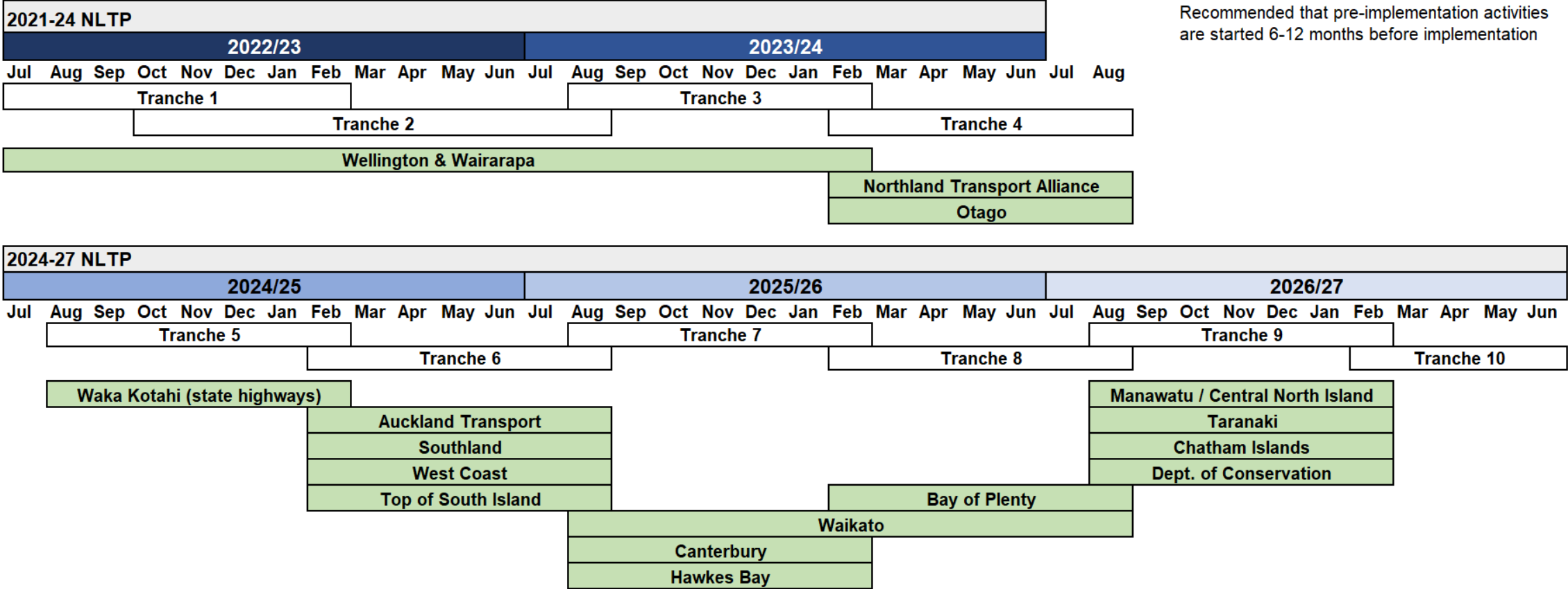
3. RCAs are not required to collect or populate missing mandatory data.



AMDS implementation is underway

AMDS implementation schedule

Recommended that pre-implementation activities are started 6-12 months before implementation



AMDS implementation is RCA led.
Some RCAs have chosen to adopt AMDS earlier or later than others in their region.

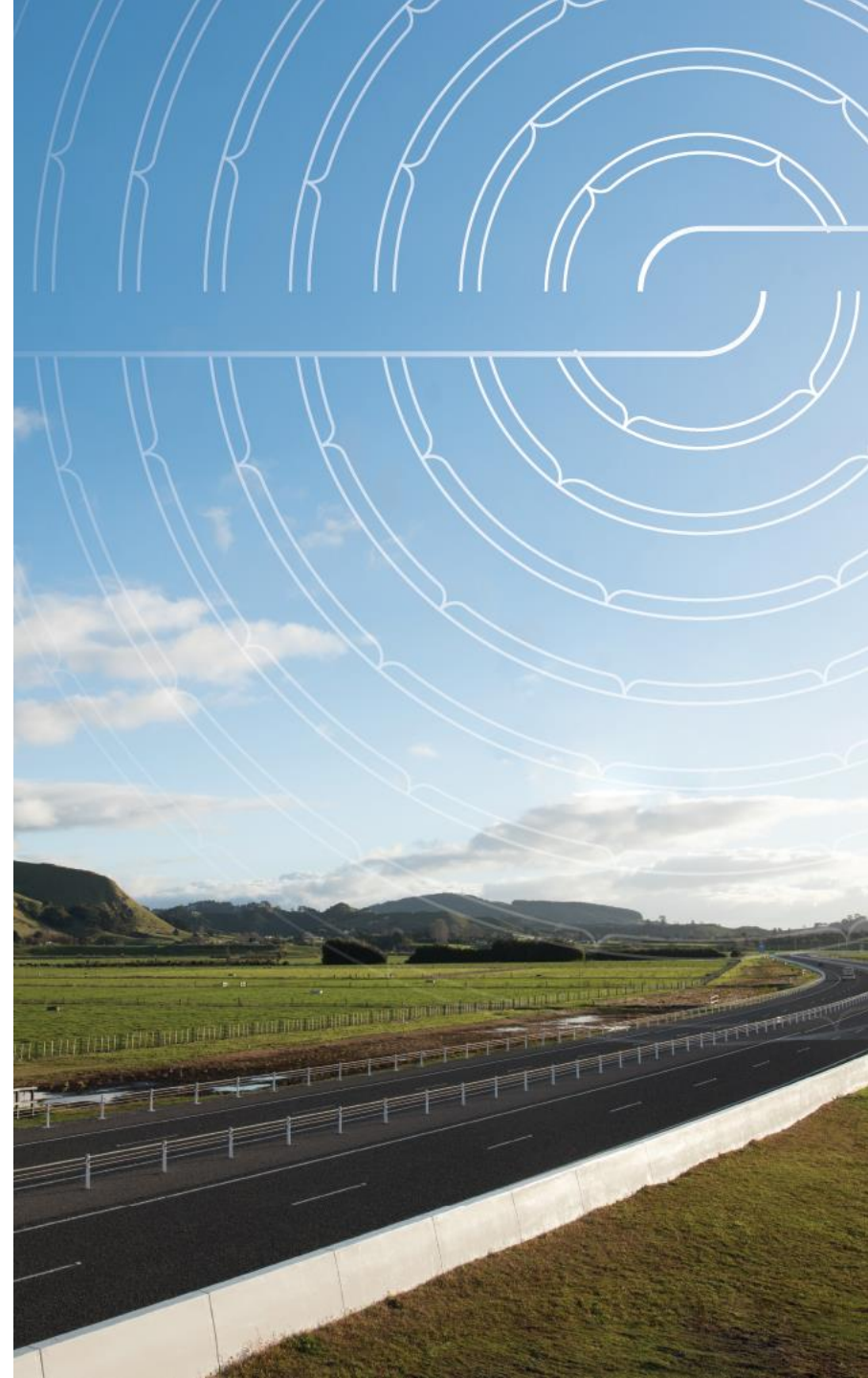
Insights from Tranches 1 & 2

- Business analysis capabilities can help with pre-implementation activities
- Talk to stakeholders early about AMDS
- Time to complete data triage will depend on how quickly decisions can be made
- Block out time to undertake key activities, eg data triage
- Identify and understand integrations early – include manual data extracts
- Include examples in implementation templates

Training approach

AMDS training approach

- Train the trainer approach to prepare RCA, contractor, consultant training champions to deliver training.
- Ensures knowledge is retained within the sector and allows for a targeted and tailored learning experience.
- Waka Kotahi will provide:
 - train the trainer sessions
 - training needs analysis support
 - kitset workshop and reference materials
 - quality assurance of materials.



Training champions

Key activities

Onboard

- Attend the train the trainer kick-off
- Receive AMDS 'kitset' workshop and reference materials

Prepare

- Complete training needs analysis
- Adapt the AMDS training materials
- Organise logistics for training

Facilitate

- Deliver workshop training
- Make pre-work resources available
- Complete evaluations and track attendance

Support

- Support learners after implementation
- Liaise with community of interest

Train the Trainer Session

Agenda

Session 1

- AMDS Programme and Standard
- Implementation and training approach
- Key changes to assets
- Training needs analysis.

Session 2

- Introduction to training material
- Collector workshop deep dive
- Tailoring materials.

Session 3

- Learner-delivered session
- Preparing for training/logistics.

Train the Trainer

Feedback / Insights

- Masterton District Council
- Upper Hutt City Council



Jeremy – Company X

Any questions?

- You can also email us, amds@nzta.govt.nz

What's next?

Next steps

We will:

- Make the recording of this webinar available on the AMDS web pages; and
- Send a December email promoting new website content and our availability over the holiday period.

You can:

- Familiarise yourself with our updated [AMDS website](#), and online resources for pre-implementation activities
- Start preparing for implementation
- Provide regular progress updates
- Share feedback and lessons learnt

Also, coming soon: A One Network Framework - Future Network Planning and Investment webinar on Tuesday 29 November 2022, 10am – 11am OR Wednesday 30 November 2022, 3pm – 4pm

Read more here: <https://www.nzta.govt.nz/planning-and-investment/planning/one-network-framework/>

