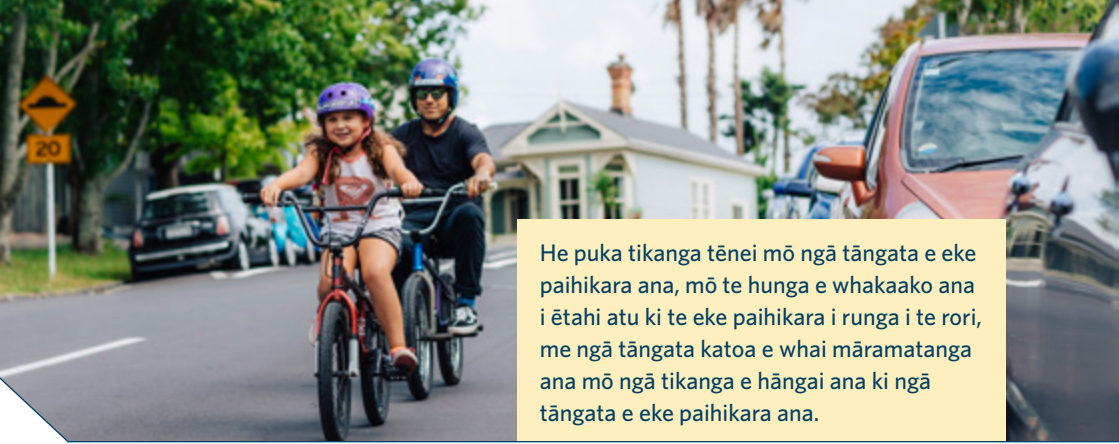


# Ko te puka tikanga o Aotearoa mō te eke paihikara





He puka tikanga tēnei mō ngā tāngata e eke paihikara ana, mō te hunga e whakaako ana i ētahi atu ki te eke paihikara i runga i te rori, me ngā tāngata katoa e whai māramatanga ana mō ngā tikanga e hāngai ana ki ngā tāngata e eke paihikara ana.

**Waka Kotahi o Aotearoa**

Hōngongoi 2020 | 19-197

ISBN 978-1-98-856180-6 (tuihono)

ISBN 978-1-98-856181-3 (tā)

NZBN: 9429041910085

Manatārua: Hōngongoi 2020

Waka Kotahi o Aotearoa

# Ngā Ihirangi

## **Ko te take o tēnei puka tikanga.....4**

Me pēhea te whakamahi i tēnei puka tikanga.....	4
He whakaurunga kia haepapa te eke paihikara .....	5

## **Taputapu.....6**

Whakamaui te pōtae mārō .....	6
Whai i ngā pereki pai .....	6
Ngā rama me ngā whakaata.....	7

## **Te Rotarota.....10**

Whakamahia kia tika ngā rotarota ā-ringa .....	10
Tirohia ki muri o tō pakihwi i mua i tō rotarota .....	11
Te huri whakatemaui .....	11
Te tū .....	11
Te huri whakatematau.....	11

## **Te taunga rori me te hipa waka.....12**

Kia noho ki te taha mauī mēnā e haumaruru ana.....	12
Whakakāia te ara mēnā e hiahia ana koe .....	13
Te hipa i ētahi atu tāngata, waka hoki .....	17
Te eke paihikara me ētahi atu tāngata .....	19

## **Ngā pūtahitanga.....20**

Ko ngā ture tautuku .....	20
Te whakatata ki ngā pūtahitanga .....	27
He pūtahitanga kore tohu (kāore he tohu, he rama ikiiki rānei).....	27
He pūtahitanga whai tohu.....	28
He pūtahitanga whai tūrama ikiiki .....	30
Ngā takawhawhe .....	41
Ngā Whakawhitinga .....	46

## **Ngā huanui, ngā ara paihikara me ngā ara pahi hoki.....50**

He ara paihikara i runga i te rori .....	50
Ngā huanui paihikara anake.....	51
Ngā huanui tuari .....	52
Ngā huanui hīkoi .....	52
He ara pahi, he ara pahi-anake hoki.....	53
Ngā ara kawē tangata .....	53

## **Ngā tohu rori, whaitohu rori hoki.....54**

Ngā tohu whakature .....	54
He tohu whakatūpato .....	56
Ngā tohu mōhiohio .....	58
Ngā whaitohu rori.....	60

# Ko te take o tēnei puka tikanga

I waihangatia ngā ture rori hei whakaiti i te mōrearea rori mā te whakarite i te whanonga ōrite, hūmārika hoki i waenganui i ngā tāngata katoa e whakamahi ana i ngā rori me ngā huanui. He mea tautoko i te puka tikanga rori tēnei puka tikanga eke paihikara - he aratohu ngāwari ki te ture ikiiki o Aotearoa me te arotahi ki ngā mahi tika ina eke paihikara ana.


I waihangatia tēnei puka tikanga mō ngā tāngata e eke ana i ngā tūmomo paihikara tae atu ki ngā ī-paihikara. Ka whai hua hoki mō ngā kaieke taraihikara, kutarere pana, īkutarere, retireti wīra, papawīra me ētahi atu ara āhua ōrite mō te haere.

## Me pēhea te whakamahi i tēnei puka tikanga

Ka whakamārama tēnei puka tikanga i ngā ture e hāngai ana ki te eke paihikara i roto i te reo ngāwari. Ko te tikanga o tēnei ka whakangāwaritia ētahi ture whīwhiwhi i ētahi wā kia tuku i ngā tohutohu mārama. Ka tuhia 'me' ki te tautuhi i te ture. Ka tuhia 'e tika ana' ki te tuku kupu āwhina, ka tuku tōtika rānei i ngā tohutohu.

Mō ngā tino kupu, tirohia ngā ture, ngā waeture me ngā ture e hāngai ana. Kei konei ngā ture kaiwhakamahi rori ki [www.nzta.govt.nz/resources/rules/road-user-2004-index](http://www.nzta.govt.nz/resources/rules/road-user-2004-index)<sup>↗</sup>



He ara pai te akoranga whakangungu pūkenga paihikara kia māia, kia whai pūkenga hei āwhina i a koe kia haumaruru tonu i runga i ngā rori. Haere ki te pae tukutuku Bike Ready kia kitea ētahi atu kōrero: [bikeready.govt.nz](http://bikeready.govt.nz) 

## He whakaurunga kia haepapa te eke paihikara

Me whai e koe ngā ture rori. Kei roto i te Ture Ikiiki Whenua 1998 ka tautuhia te paihikara hei waka, ā, ka kī 'Kāore e taea e te tangata te taraiwa i te waka, te whakaaweawe i te taraiwatanga o te waka rānei, me te pōrahu, te kore e āta whakaaro rānei, ki ētahi atu tāngata'.

Ko te tikanga o te whai i ngā ture ka āhei te matapae i ō whanonga, i te ara ka ārai i te mahi hē, e ōrite ana me ngā ture rori, ā, e whakaatu ana i te mānawanawa me te manaaki ki ngā tāngata katoa. Kei roto i te eke haepapa:

- te whai i ngā ture tautuku, tohu rori me ngā whaitohu rori
- te whakamahi i ngā rotarota ā-ringa
- te whakahipa haumaruru i ētahi atu tāngata me te kore whakaohore i a rātou
- te noho whakatemauī ina e haumaruru ana
- te eke kia kaua e neke atu i ngā kaieke e rua e eke piritaha ana
- te kore eke me te pororaru, te waimaero rānei

- te kore eke ki runga i ngā huanui hīkoi (he aweretanga e hāngai ana).

### Kaua e eke pororaru, waimaero rānei

He taihara te eke, te taraiwa rānei ina pororaru ana. Me kaua koe e whakamahi i tō waea ina eke ana.

Kaua e eke mehemea kua kai i te waipiro, i ngā pūroi rānei e riro ai to mana ki te eke paihikara.

### Te eke haumaruru

Kia mataara koe ki ngā āhuratanga mōrearea. Mātaitia mō ngā āhuratanga mōrearea me te karo i aua āhuratanga mōrearea. Ka puta mai pea ngā mōrearea i te rori me te taiao e karapotī ana i a koe, me ngā tāngata kei runga i te rori me koe.

Ka hapa ngā tāngata. Tirohia mēnā kua kitea koe e ētahi atu tāngata, pērā i te titiro karu ki te karu. He matawhawhati ngā tāngata e haere ana mā raro, otirā ngā tamariki, ā, i ētahi wā kāore ngā kaitaraiwa e kite i ngā tāngata kei runga paihikara kei ngā pūtahitanga rānei, ina huaki rānei i ngā kūaha waka.

# Taputapu

Me mau i a koe te pōtae mārō ina eke paihikara ana, ā, me whai pereki pai tō paihikara. Me whai anō e koe ngā rama me ngā whakaata tika mō ngā āhuatanga i te wā e eke paihikara ana koe.

## Whakamaua te pōtae mārō

Me mau pōtae mārō ina eke paihikara ana. Ki te hari koe i ngā pāhihi i runga i tō paihikara, me mau hoki e rātou te pōtae mārō. Ka hāngai tēnei ture ki ngā tūmomo eke mā runga rori, ki waho o te rori hoki.

Me noho tika tō pōtae mārō, ā, me te mea anō kua waihangatia mō te eke paihikara. Kāore i te tika ngā pōtae mārō motopaika, ngā pōtae piki maunga, ngā pōtae eke hoiho rānei mō te eke paihikara.

Kotahi anake te wā ka tiaki te pōtae mārō paihikara i tō upoko. Ina makere, kei roto i tētahi tūtuki rānei, tirohia mō ētahi tawhā iti, ki roto, ki waho hoki. E tika ana kia whakakapia ngā pōtae mārō kua pakaru.

## Whai i ngā pereki pai

Me whai ngā paihikara katoa i ngā pereki pai ki ngā wīra o mua, o muri hoki, kia āhei koe te tū tere me te āhei tonu ki te whakahaere.

Whāia ētahi atu waka ki te tawhiti haumaruru. Me waiho koe i te takiwā e nui ana kia tū mēnā ka tū ohorere te waka o mua.



## Ngā rama me ngā whakaata

Me whai tō paihikara i ngā rama me ngā whakaata tika mō ngā āhuatanga i te wā e eke paihikara ana koe. Ka āwhina ngā rama me ngā whakaata kia kitea ai koe.

### Ngā rama

Me whakamahi koe i ngā rama i waenganui i te tōnga o te rā me te whitinga o te rā, me ngā wā katoa kāore e taea e koe te kite i te tangata, te waka rānei i te tawhiti 100 mita - ko te roanga o te whira whutupōro, whanapoikiri rānei.

Me whai e koe tētahi rama, e rua rānei ki mua i tō paihikara. Ka taea te rama o mua anake te rarapa. Me mā, me kōwhai rānei ngā rama o mua.

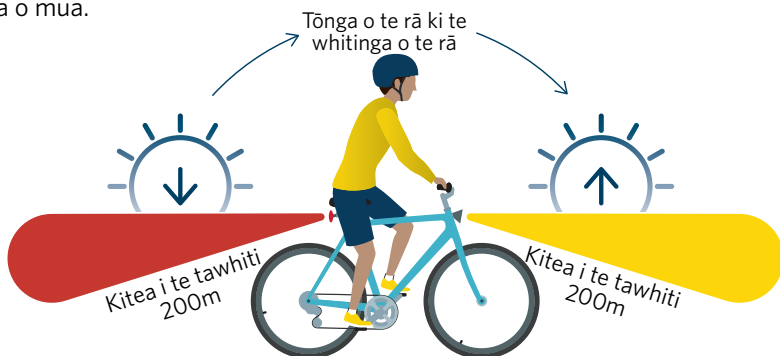
## WHITINGA O TE RĀ, TŌNGA O TE RĀ ME TE TŪRAMA ITI

Ka moata, ka tūreiti rānei te ngaro o te rama i tō ngā wā whitinga o te rā me te tōnga o te rā ōkawa, pērā i te rori i roto i te awaawa teitei. Mēnā kei te tō te rā ina eke paihikara ana koe, mā te whakakā i ō rama ka kitea koe. Ka uaua te kite nā te ua me ngā whakamarumarua o ngā rākau, ngā whare rānei.

Me kaua e iti iho i te kotahi te rama o muri. Ka taea ngā rama o muri katoa te rarapa. Me whero ngā rama o muri.

Ko te tikanga me kite ngā rama mai i te tawhiti 200 mita i te pō.

Me kaua ō rama e kōnakonako, e whakapohewa, e whakapōrarua rānei i ētahi atu tāngata.



## E TIKA ANA KIA KITEA KOE ENGARI KAUA E KŌNAKONAKO

Ka mahi anake ngā tūrama me ngā whakaata mēnā he mārama te kite atu – kaua e tāpōuri ki ngā pēke, ki ngā koti rānei.

Kia tūpato ki ngā tūrama tino mārama e whakamahia ana hei whakamārama i tō ara – paku koki ki raro, ā, kaua e anga tōtika ki ētahi atu tāngata.

Ka aro mai ngā tāngata ina kite i ngā tūrama kōwhā. Mō ngā tūrama o mua, he whakatōpūtanga pai te tūrama kōwhā kotahi me te tūrama pāmārō.

### Ngā whakaata

Me whai ngā paihikara katoa i te whakaata whero, kōwhai rānei e anga whakamuri ana, ahakoa ka eke anake koe i te awatea.

Me whai hoki e koe ngā whakaata teka ina eke ana i waenganui i te tōnga o te rā me te whitinga o te rā, ā, i ngā wā katoa e hiahia ana koe ki ngā rama. Me noho ngā whakaata teka ki mua, ki muri hoki o ia teka. Ka tino kitea te neke o ngā teka whai whakaata teka.

Kāore e tino ngāwari te whakapiri i ngā whakaata ki ētahi teka. Ina eke koe i ngā pō me te kore whai i ngā whakaata teka, me mau koe i ngā rawa whakaata (pērā i te pae whakaata i runga i ngā kākahau, i te takai whakaata rānei). Ka āwhina hoki ngā takai whakaata i runga i ō ringaringa i ngā kaitaraiwa kia mārama te kite i ō rotarota ā-ringa.







# Te Rotarota

**Me tika tō whakamahi i ngā rotarota ā-ringa – whakamahia te rotarota tika, ā, ka rotarota mō ngā hekona e 3. Ehara i te mea me rotarota koe ki te kore e taea te whakahaere tonu i tō paihikara.**

Ka whakamōhio ngā rotarota ā-ringa ki ētahi atu tāngata i runga i te rori he aha ō mahi. Whakamahia ngā rotarota ā-ringa hei āwhina i ētahi atu tāngata ki te matapae i ō nekeneke me te whakawātea i te takiwā mōu.

## **Whakamahia kia tika ngā rotarota ā-ringa**

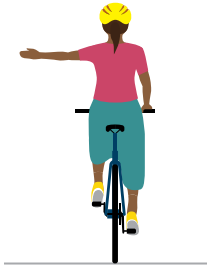
E toru ngā rotarota ā-ringa ōkawa.

- Toro atu tō ringa mauī ki te rotarota ka huri koe, ka neke whakatemaui rānei.
- Toro atu tō ringa matau ki te rotarota ka huri koe, ka neke whakatematau rānei.
- Toro atu tō ringa matau me te hiki i tō kikowhiti me tō ringa ki te rotarota kei te tū koe.

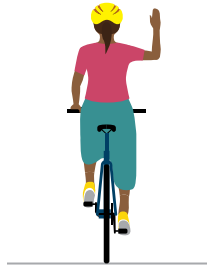
Me whakamahi e koe te rotarota ā-ringa tika mō ngā hekona e 3 i mua i:

- te neke ki te ikiiki
- te tū
- te huri whakatemaui, whakatematau rānei
- te neke whakatemaui, whakatematau rānei (pērā i te tīmata, te whakawhiti ara, te whakakī rānei i te ara)
- te uru, te puta atu rānei i te takawhawhe mēnā e huri whakatemaui, whakatematau rānei, mēnā ka taea e koe te whakahaere tonu i a koe e rotarota ana.

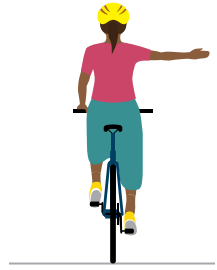
Ka tīmata ana koe i tō haere, ka noho pea ngā ringaringa e rua ki runga i ngā hānara. Ko te kōwhiringa pai rawa ko te rotarota i mua i te tīmatanga ki te whakaatu i ō kawatau.



Te huri  
whakatemaui



Te tū



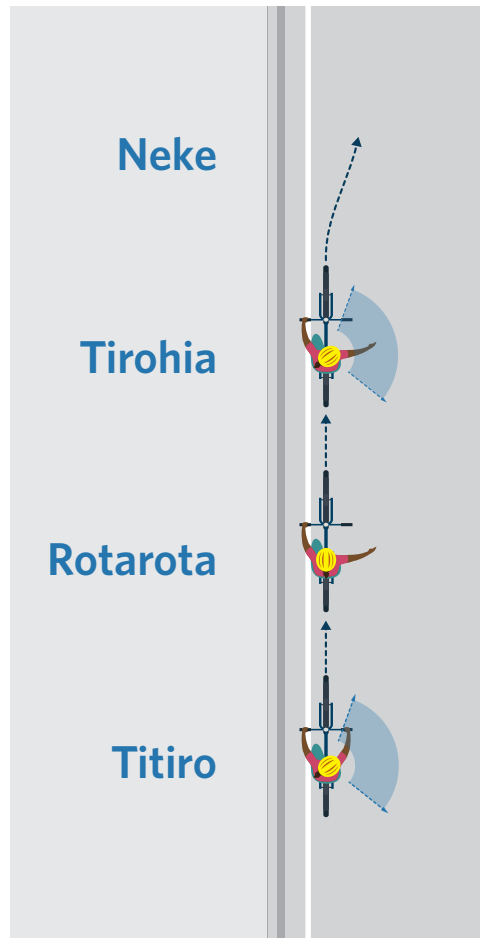
Te huri  
whakatematau

## Tirohia ki muri o tō pakihwi i mua i tō rotarota

Ina huri ana, whakawhiti ara ana, e puta mai ana rānei ki te ikiiki, e tika ana kia mōhio koe mēnā e whakatata mai ana te ikiiki mai i muri i a koe.

1. Tirohia ki muri o tō pakihwi mēnā e haumarua ana ki te neke.
2. Te Rotarota.
3. Tirohia mēnā e haumarua tonu ana ki te neke.
4. Neke.

Mēnā kāore i te haumarua, tatari kia wātea he puare.



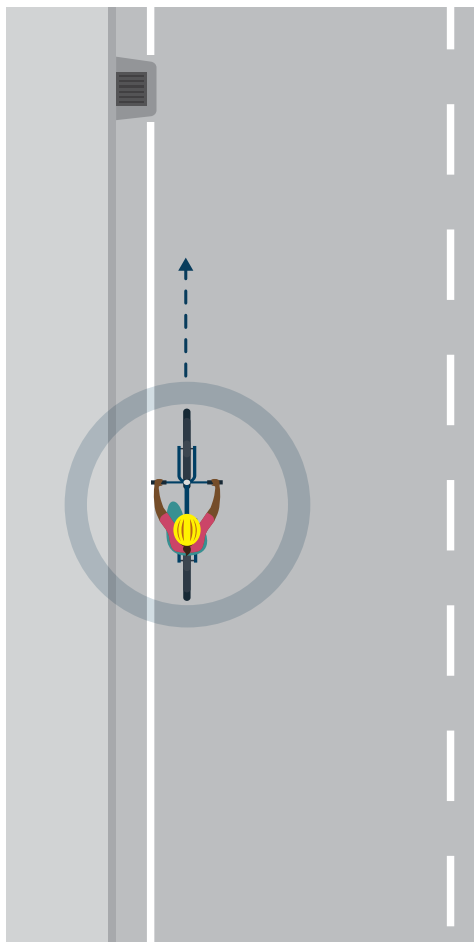
# Te taunga rori me te hipa waka

Kia tika te taunga o tō waka ki runga i te rori. Ko te tikanga o tēnei kia anga whakamaui mēnā e haumarua ana. I ētahi wā e tika ana kia neke whakatemataua koe kia haumarua tonu ai.

## Kia noho ki te taha mauī mēnā e haumarua ana

Me noho ngā kaiwhakamahi rori katoa ki te taha mauī o te ararori. Ko te tikanga o tēnei, me noho koe ki te taha mauī i a koe e eke ana, engari kia tūpato.

- Ekengia ki te taunga e pai ana tō tirohanga, ā, ka kitea koe e ētahi atu tāngata.
- Kaua e whakamahi te kōtiutiu ki roto, ki waho hoki – mā te tōtika o te haere ka taea e ētahi atu tāngata i ō nekeneke.
- Me kaua e tata rawa ki te paeara, ki te taitapa rānei o te rori, kia karo koe i ngā kōrere, ngā otaota me ngā rino waiāwhā.
- Mēnā he pakihwi tō te rori, e āhei ana koe te eke i runga i te pakihwi.



## P: KIA HIA TE ROA KI ROTO I TE ARA?

WH: WHAKAKĪIA TE ARA MŌ TE WĀ E HIAHIA ANA KOE KIA HAUMARU AI. KIA HŪMĀRIKA KI ĒTAHI ATU TĀNGATA.

- I mua i te neke anō ki te taha mauī, tirohia ki mua kia kite mēnā me whakakī anō koe i te ara ākuanei. Kāua e kōtiutiu haere ki roto, ki waho hoki, ka whakaiti pea i tō aritanga ki ētahi atu tāngata.
- Mēnā e whakakī ana i te ara ki te aukati i te hipatanga hīrokiroki, hoki atu anō ina panoni te tūāhua.
- Ina whakakī ana i te ara mō ngā wāhanga roa rawa o te rori, ki ngā tere iti iho rānei, kia auau te tiro mō te ikiiki e whai ana i a koe, me te whakaae kia hipa ina e haumaruru ana.

## Whakakīia te ara mēnā e hiahia ana koe

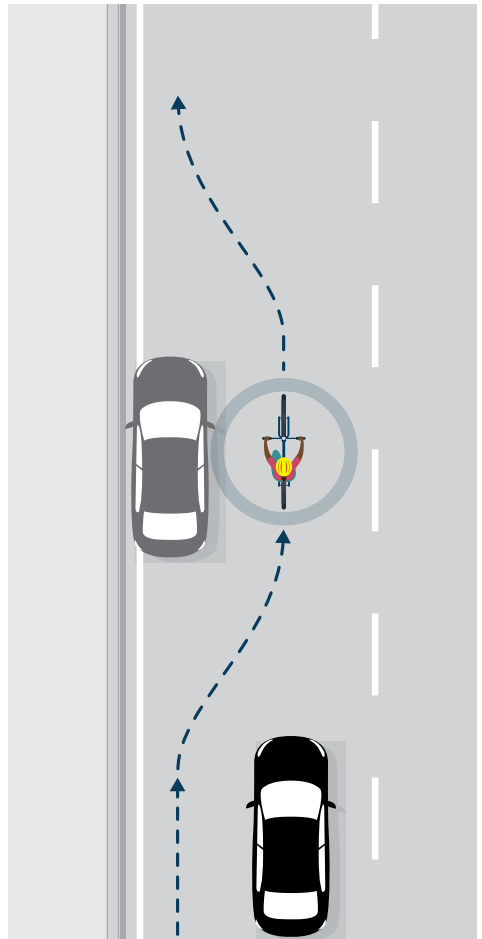
I ētahi wā me neke whakatematau koe, ki te pokapū o te ara. E kīia nei tēnei ko te 'whakakī i te ara', ā, ka āwhina i a koe ki te karo i ngā mōrearea kia haumaruru ai te hipa waka.

He rerekē ngā tūāhuatanga katoa. Me whakatau e koe mehemea ka whakakī i te ara i runga i te whakatakotoranga o te rori me te whānuitanga, me te tere me te rahi o te ikiiki.

Hei whakakī i te ara:

1. Kimihia te āputa i te ikiiki, whakaatuhia ō hiahia, tirohia nga waka e whai ana, ā, kātahi ka whakawhiti.
2. Whakakīia te ara mō te wā e hiahia ana koe.
3. Neke ki te taha mauī o te rori ina e haumaruru ana.

Anei ētahi tūāhuatanga kia noho haumaruru ina whakakī koe i te ara.



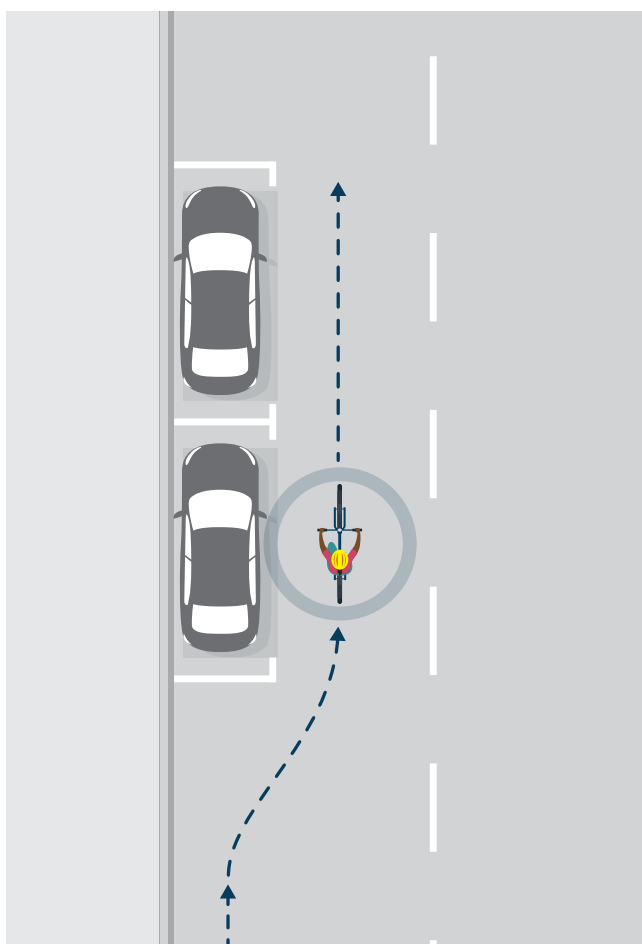


## Te hipa i ngā waka kua pākahia

Whakakī i te ara kia hipa i ngā waka e pākahia ana, ētahi atu waka kua tū rānei, kia kotahi mita te tawhiti i ngā waka e tū ana. Ina hipa koe i ngā waka, neke ki te taha mauī o te rori mēnā e haumarua ana.

Ka āwhina te whakakī i te ara i konei kia karo koe i te 'takiwā kūaha' ina ka ohorere te huaki i ngā kūaha waka i mua i a koe.

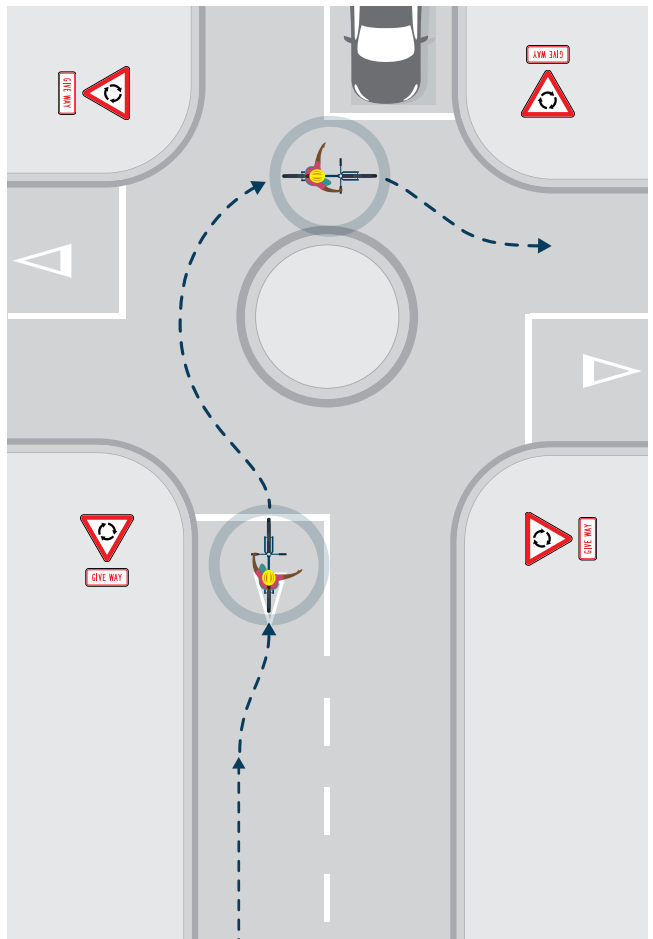
Ka āwhina hoki te whakakī i te ara i konei kia kitea koe e ngā tāngata pērā i ngā tangata hīkoi e tatari ana ki te whakawhiti i te rori, ngā kaitaraiwa rānei e wehe ana i ngā arawaka.



## Te eke kia pōkai i te takawhawhe

Whakakī i te rārangi kia whakatata ki te takawhawhe. Me noho ki waenganui o te ara ki te eke pōkai i te takawhawhe. Ina wehe koe i te takawhawhe, neke ki te taha mauī o te rori mēnā e haumaruru ana. Tirohia [ngā takawhawhe \(whārangi 41\)](#).

Ki te whakakī i te ara ki konei ka noho koe ki te taunga pai kia kitea e ngā kaitaraiwa. Ka āwhina hoki ki te aukati i ngā kaitaraiwa ki te hipa i a koe i te wā e whakatata ana koe me te eke āwhio i te takawhawhe, te whakawhiti rānei i tō ara ina puta atu rātou.

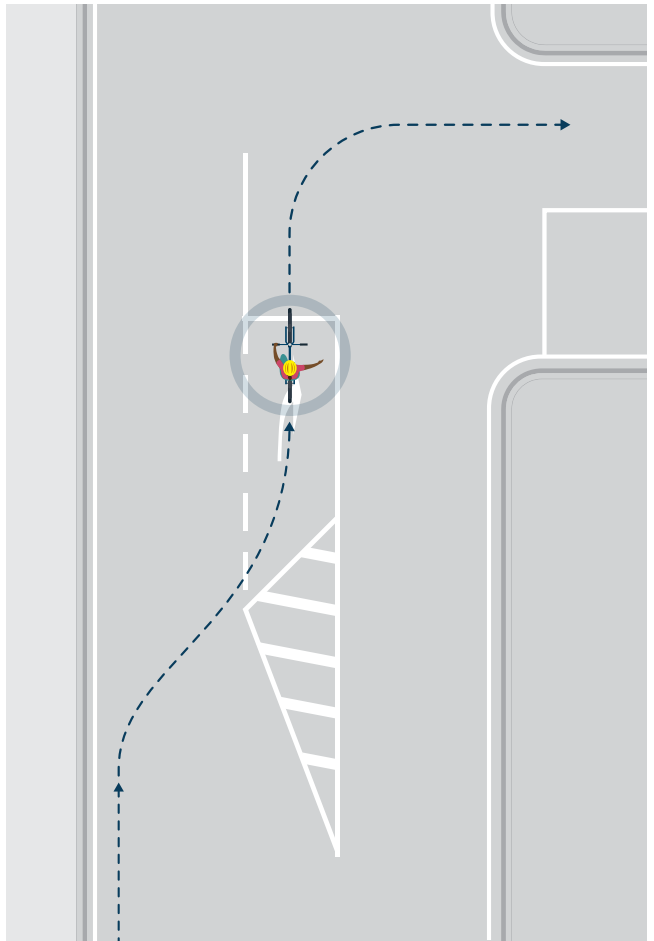




## Te whakamahi i ngā ara huri ki te pūtahitanga

Whakauru ki te ara huri tika kia whakatata ki te takawhawhe. Me noho ki waenganui o te ara ki te eke āwhio i te takawhawhe. Ina wehe koe i te pūtahitanga, neke ki te taha mauī o te rori mēnā e haumaruru ana. Tirohia [ngā pūtahitanga \(whārangi 20\)](#).

Mā te whakakī i te ara i roto i te ara huri ka mōhio ngā kaitaraiwa e hiahia ana koe ki te huri, e whakakaha ana i te karere o tō rotarota ā-ringa. Ka āwhina hoki ki te aukati i ngā kaitaraiwa i te hipa i a koe i te wā e whakatata ana, e eke āwhio ana i te pūtahitanga.





## NGĀ WHAITOHU HĀRŌ

Ka kite pea koe i te whaitohu hārō i runga i te rori. Ka whakamōhio ngā whaitohu hārō i ngā tāngata katoa ka āhei ngā tāngata i runga i ngā paihikara te whakakī i te ara.

Ka whakamahia ngā whaitohu hārō ki ngā wāhi me whakakī ngā tāngata mā runga paihikara i te ara. Ka miramira he whakaaro pai pea ki taua wāhi. Kā āhei koe te whakakī hoki i te ara ki ētahi atu wāhi.

## Te eke i runga i te wāhanga whāiti o te rori

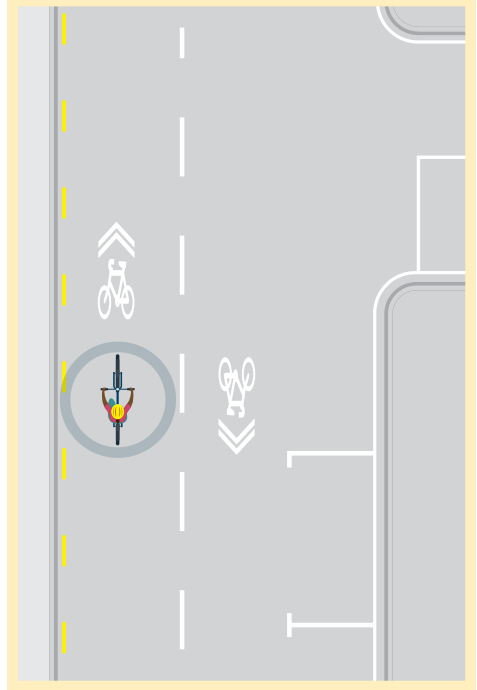
Whakakīia te ara hei eke i te wāhanga whāiti o te rori. Ina whānui haere te rori, neke ki te taha mauī o te rori mēnā e haumaruru ana.

Ka āwhina te whakakī i te ara i konei ki te aukati i ngā kaitaraiwa ki te hipa i a koe mēnā he whāiti rawa te rori kia haumaruru ai te hipa. Mō ngā wāhanga roa ake o te rori whāiti, kia auau te tiro mō ngā waka e whai ana i a koe, me te tuku i te waka kia hipa ina e haumaruru ana.

## Te hipa i ētahi atu tāngata, waka hoki

Me hipa koe ki te taha matau, i te nuinga o te wā. E whakaaetia ana koe ki te hipa ki te taha mauī mēnā kei te ara motuhake hoki, pērā i ngā ara paihikara, i ngā ara huri rānei. E whakaaetia ana hoki koe ki te hipa ki te taha mauī mēnā e huri ana ngā waka ki te taha matau, e tū ana rānei, pērā i te tūtira.

Ina e hipa ana i te tūtira ikiiki ki te taha mauī, karapa ki mua mō ngā waka e huri ana me te whakawhiti i tō huanui ki ngā rori kei te taha.



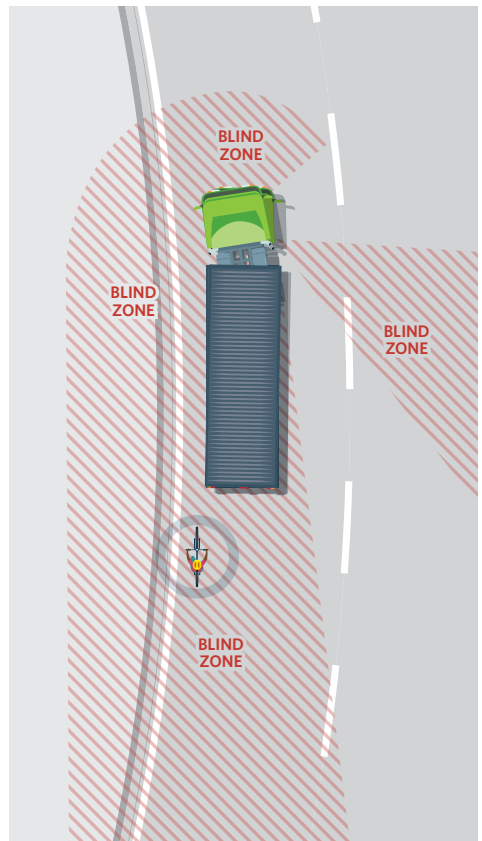
## ARO ATU KI TE ĀPUTA

Kia āta haere, ā, kia tino tūpatō ina whakatata ana ki te āputa i te tūtira o ngā waka. Kua waiho pea te kaitaraiwa i te āputa mō te waka huri. Kimihia ngā waka e whakatata ana ki te āputa i ngā taha e rua.

### Te hipa i ngā taraka me ngā pahi

He uaua mā ngā waka taumaha pērā i ngā taraka me ngā pahi te kite, otirā i te wā e huri ana, nā reira kāore pea te kaitaraiwa e kite i a koe i tana taha. Kāore hoki ngā taraka e kite ki mua tata o te tiriwā.

- Kua e hipa i te taraka, te pahi rānei e huri ana, e tata ana rānei ki te huri
- Matapaetia te nekeneke o ngā taraka me ngā pahi, pērā i te peka ki te tūnga pahi, te tapahi i te kokonga, te piu whānui rānei i mua i te huri
- Mēnā kua tū koe i mua i te taraka, whakaritea e wātea ana koe i te takiwā kāpō mā te tiro e kitea ana koe e te kaitaraiwa
- Mēnā kei mua te taraka, te pahi rānei i a koe i te tūtira ikiiki, e tika ana kia whakatau koe mēnā e āhei ana koe te puta ki mua o te tūtira i mua i te wā panoni ai te rama ikiiki, i mua rānei i te wā neke ai ngā waka. Mēnā hiahia ana koe ki te neke ki mua o te tūtira, he pai ake te hipa i nga waka e tū ana ki te taha matau. Mēnā kāore koe e tino mōhio ana ka puta koe ki mua o te tūtira i mua i te panoni o ngā rama ikiiki, he pai ake te tatari.



Ko ngā takiwā kāpō kāore ngā kaitaraiwa waka taumaha e kite i te tangata i runga i te paihikara – tirohia a [www.sharetheroad.org.nz](http://www.sharetheroad.org.nz) mō ētahi atu mōhiohio.

## TE EKE PAHIKARA Ā-RŌPŪ

Ko te eke paihikara ā-rōpū (te eke i roto i ngā rōpū nui) he pūkenga whatutoto. Tirohia ētahi atu kōrero e pā ana ki tēnei ki te pae tukutuku o Cycling NZ.

[www.cyclingnewzealand.nz](http://www.cyclingnewzealand.nz)

## TE EKE PAHIKARA ME NGĀ TAMARIKI

Āta mātakitaki i ngā tamariki nohinohi ina eke tahi ana. Mēnā e āhei ana, me tiaki te pakeke i te rōpū mai i muri. Kia tūpatō kei wherawhera rawa te rōpū.

### Te hipa i ngā tūtira waka e tū ana, e pōturi haere ana rānei.

Ina hipa koe i ngā tūtira waka e tū ana, e pōturi haere ana, ka whakaitia tō aritanga, ā, kāore pea ngā kaitaraiwa huri e kite i a koe.

Kia tūpatō ki ngā tāngata e whakawhiti ana i te rori i waenganui i ngā waka e tūtira ana, otirā e aukatia ana tō tirohanga whakamua e tētahi waka nui.

### Te hipa i ētahi atu kaieke me ngā tangata hikoiki haere

Kia tūpatō te hipa i ētahi atu tangata.

I runga i te rori, me hipa i ētahi atu kaieke ki te taha matau. Tukuna te ātea e āhei ana koe me te kore whakaohore i a rātou – ka āwhina pea te tangi o tō pere. Mēnā e eke ana koe i runga i te rori oreore, e tika ana pea kia tatari ki te āputa i roto i te ikiiki kia haumarū ai i te wā e hipa ana.

I runga i ngā huanui tuari, me pōturi te haere, ā, tukua ngā kaiwhakamahi pōturi ake. Kia kaua e iti iho i te kotahi mita te āputa kei whakaohore i a rātou. Whakamōhioia atu ki ngā tangata hikoiki haere e whakatata ana koe mā te karanga atu, mā te whakatangi rānei i te pere. Ina taea ana, eke

ki te taha mauī, ā, hipa ki tō taha matau.

Mēnā ka tūtaki koe ki te hōiho, e tika ana kia tukuna te hōiho, nā te mea he ngāwari te whakaohore i te hōiho.

### Te eke paihikara me ētahi atu tāngata

Ina eke koe me ētahi atu, whakaarohia ngā kaieke i roto i te rōpū me ētahi atu tāngata e tata ana ki te rōpū. E tika ana kia āta whakaarohia ngā kaieke hou, ngā tamariki rānei.

Ina eke ana me ētahi atu, whāia ngā ture rori mā:

- te eke kia kaua e neke atu i ngā kaieke e rua e eke piritaha ana
- te hipa i ētahi atu kaieke me ngā waka ki te taha matau, mēnā kei roto i tō ake ara
- te pupuri i te tawhiti haumarū
- te kore piritaha ina e hipa ana i ngā waka e pākahia ana, e nekeneke ana rānei.

He whakaaro pai kia haere i te tūtira kotahi i runga i ngā kokonga, ngā puke me ngā rori he iti iho te aritanga i te 200 mita.

# Ngā pūtahitanga

He pūtahitanga tētahi wāhi e rua, neke atu rānei ngā tiriti, ngā rori rānei, e tūhono ana e whakawhiti ana rānei.

He pūtahitanga hoki:

- tētahi wāhi e tūhono ana te urunga tūmatanui, putanga rānei, ki te rori
- tētahi wāhi e tūhono ai ngā huanui tuari, ngā huanui paihikara anake rānei, ki tētahi atu mea pērā, ki te rori rānei.

E whakamārama ana ngā wāhanga e whai ake nei i ngā ture tautuku, ā, me pēhea te eke mā ēnei tūmomo pūtahitanga rerekē:

- Ngā pūtahitanga kāore he tohu, he rama ikiiki rānei.
- He pūtahitanga whai i ngā tohu, i ngā whaitohu rānei.
- He pūtahitanga whai tūrama ikiiki.
- Ngā takawhawhe.
- Ngā Whakawhitinga.

## Ko ngā ture tautuku

He ōrite ngā ture tautuku mō ngā tāngata e eke paihikara ana, e taraiwa ana rānei i ētahi atu waka.

Ko te tikanga o te tautuku ki tētahi tangata, ka whakarite koe kāore he mahi mā tērā tangata ki te karo i a koe. Hei tauira, me kaua rātou e tū, whakapōturi haere, kōtiutiu rānei.

He wā me tautuku ētahi waka ki a koe, engari ehara i te mea ko te tikanga o tēnei kei a koe te tikanga haere. Kei ngā kaiwhakamahi rori te tikanga kia karo i te tūtukitanga mēnā e āhei ana mātou. E tika ana kia rite koe i ngā wā katoa ki te tū, otirā ki ngā pūtahitanga. Kimihia ngā mōrearea, ā, kimihia rātou ka hapa pea.

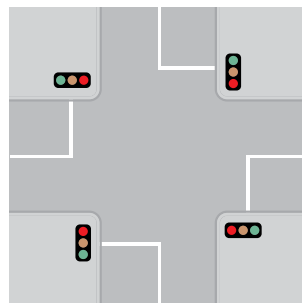
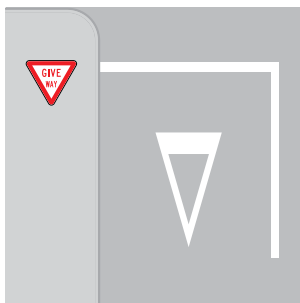
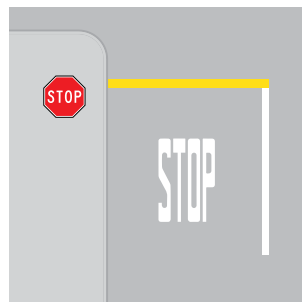
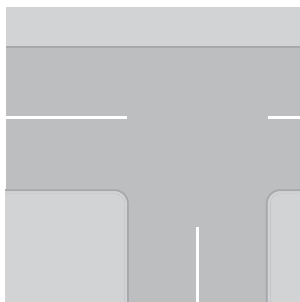
Ko ngā ture tautuku he ture rori e whakaaetia ana kia mōhio ngā kaiwhakamahi rori katoa mā wai e tautuku, ā, āhea e āhei ana te haere haumaruru. E rima ngā ture tautuku, ā, he ōrite ahakoa e eke ana koe, e taraiwa ana rānei.



## Ture tautuku #1

Me tū, me tautuku rānei ina hiahiatia ana ki ēnei tūwāhi:

- Ngā pūtahitanga me te kore tohu, rama ikiiki rānei (e kīia nei he pūtahitanga kāore e whakahaeretia ana).
- Ngā tohu tū.
- Ngā tohu tautuku.
- Ngā rama ikiiki.

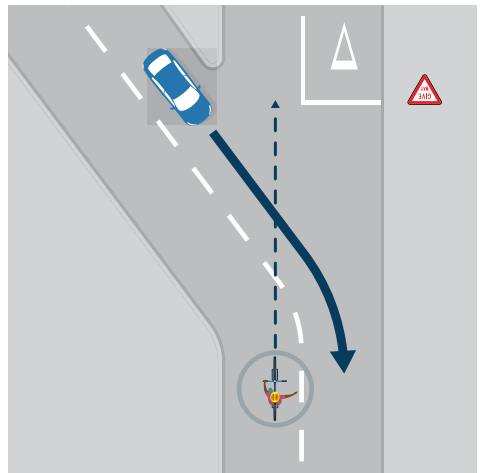
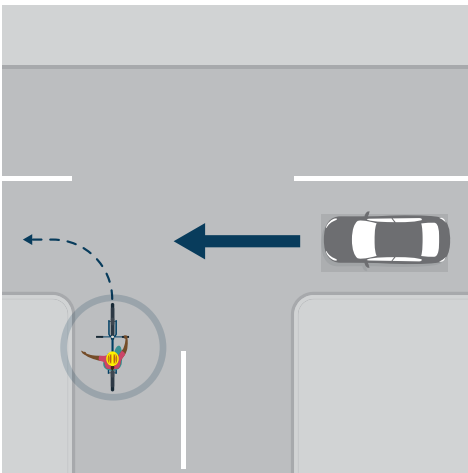


## Ture tautuku #2

Mēnā e huri ana koe, me tautuku koe ki ngā waka e haere tōtika ana.

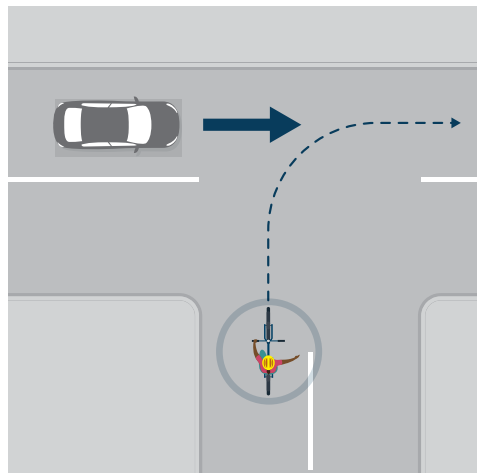
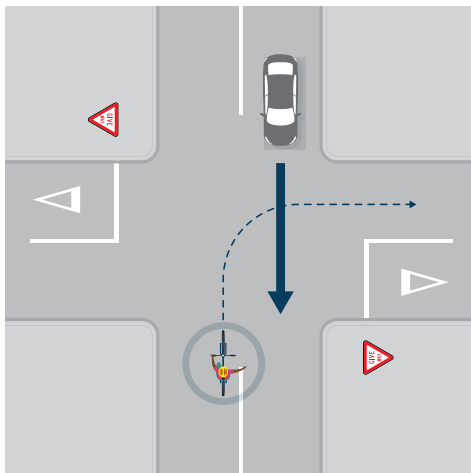
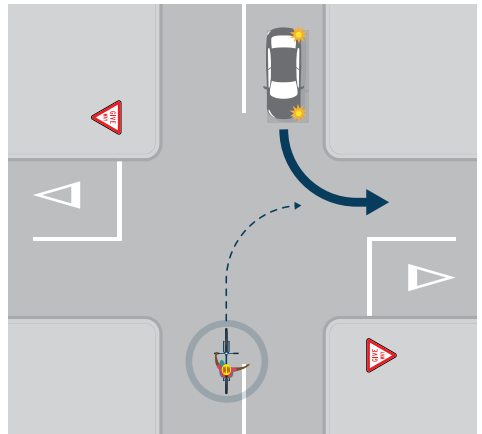
Mēnā e wehe ana koe i te rārangi o waenganui ki tētahi pūtahitanga kore tohu, he huringa tēnei, ā, me tautuku koe ki ngā waka e whai ana i te rārangi o waenganui.

Mēnā e whakawhiti ana koe i te huanui hīkoi, ara pahi, ara paihikara rānei, me tautuku koe ki ngā tāngata i runga i te huanui hīkoi, e haere ana rānei i roto i aua ara.



### Ture tautuku #3

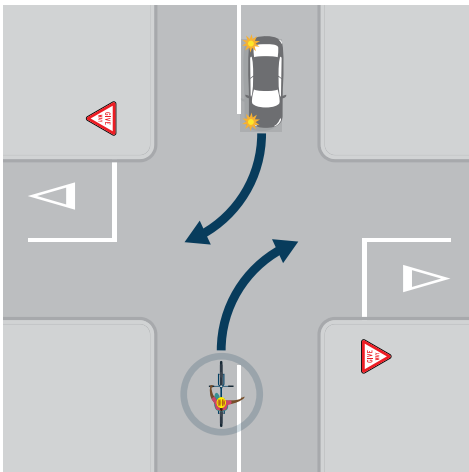
Mēnā e huri ana koe ki te taha matau, me tautuku koe ki ngā waka katoa e ahū mai ana ki a koe tae atu ki ērā e huri ana ki te taha matau. Ka hāngai tēnei ture mēnā e anga ana ngā waka e rua ki ngā tohu, ngā rama ikiiki rānei, mēnā rānei kāore i te anga atu ki ētahi tohu, rama ikiiki rānei.





Mēnā e huri koe ana ki te taha matau me te waka e ahu mai ana ki a koe, he maha ngā pūtahitanga e whakaae ana kia huri ngā waka e rua ki te huri i te wā kotahi nā te mea kāore e whakawhiti ana ō huanui.

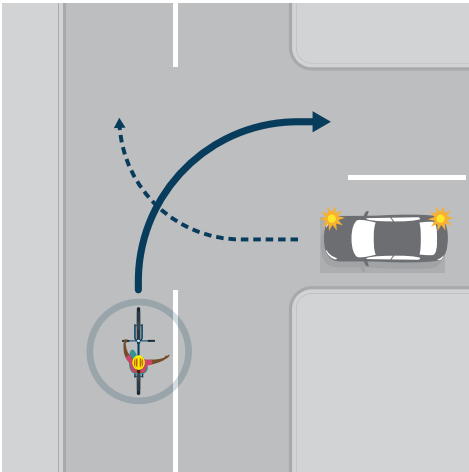
Ka āhei kōrua tahi te haere mēnā e haumarua ana, engari kia tūpato mēnā ka whakawhiti pea ō kōrua huanui – pērā i te taraka nui, te pahi rānei e hiahia ana ki te whai wāhi ki te huri. Waihoki tirohia te ikiiki e whai ana kāore pea e huri ana.



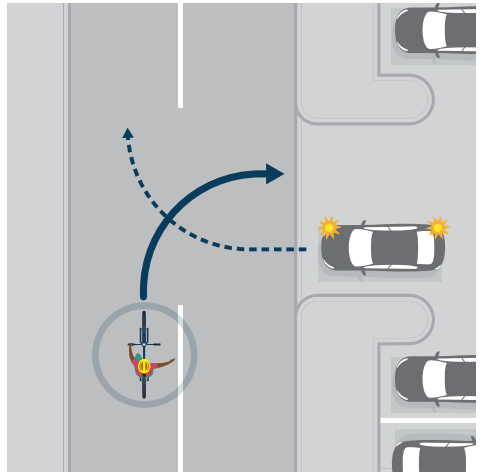


### Ture tautuku #4

Kei te pūtahitanga T, te whakaurunga tūmatanui, te arawaka rānei, ko te ikiiki i runga i te rori ka oti me tautuku ki ngā ikiiki katoa i runga i te rori e haere tonu ana.



Pūtahitanga



He urunga, he putanga tūmatanui

## Ture tautuku #5

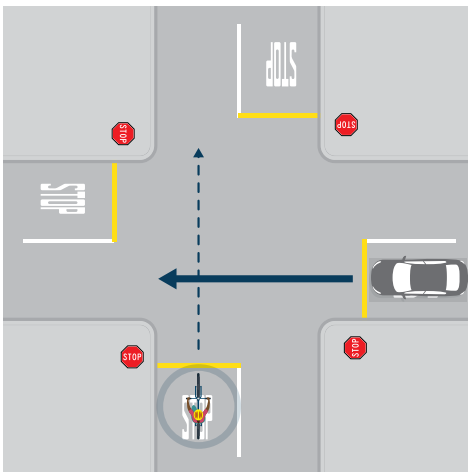
Mēnā kāore tētahi atu o ngā ture tautuku e whā i te hāngai, whakamahia te ture #5. Ko te tikanga o tēnei ture me tautuku koe ki ngā waka katoa e haere mai ana i tō taha matau.

Mēnā he ōrite ngā tohu kei ngā rori katoa o te pūtahitanga (hei tauira, he tohu tū) kāore he tohu rānei, me tautuku koe ki ngā mea katoa e haere mai ana i tō taha matau.

## He āwhina te hūmārika

He whaitake ngā ture tautuku e rima i te nuinga o te wā. Engari i ētahi wā me whai whakaaro koe. Mā tātou katoa ngā rori. Ko tētahi āhuetanga o te taraiwa, te eke paihikara, te kutarere me te hīkoi ko te hūmārika me te mākohā ki ētahi atu tāngata.

He rerekē ngā ture tautuku kei ngā whakawhitinga mō ngā tangata hīkoi. Tirohia [ngā Whakawhitinga \(whārangi 46\)](#).





## Te whakatata ki ngā pūtahitanga

Neke ki te taha matau, ki te pokapū o te ara. Tirohia [a Whakakāia te ara \(whārangi 13\)](#) i mua i te tae atu ki te pūtahitanga.

Mēnā neke atu i te kotahi ngā ara mō ngā ahunga e rua e whakawhiti ana i te pūtahitanga, me uru ki te ara tika i mua i te pūtahitanga. Tirohia [Te rotarota \(whārangi 10\)](#).

Mēnā e tūtira ana te ikiiki ki te pūtahitanga, ka āhei pea koe te āta neke ki mua o te tūtira. Tirohia [Te whakamahi i ngā wāhi tū whatutoto \(whārangi 33\)](#), [Te hipa i ngā taraka me ngā pahi \(whārangi 18\)](#) me te [hipa i ngā tūtira o te ikiiki e tū ana, e pōturi haere ana rānei \(whārangi 19\)](#).

Rotarota mēnā e huri whakatemauī, whakatematau ana rānei koe. Tirohia [Te rotarota \(whārangi 10\)](#).

Whāia ngā rama ikiiki, ngā tohu, ngā ture tautuku rānei e whakahaere ana i te pūtahitanga.

## He pūtahitanga kore tohu (kāore he tohu, he rama ikiiki rānei)

Whāia ngā ture tautuku. Tirohia [Ngā ture tautuku \(whārangi 20\)](#).

Kimihia ētahi atu e whakatata ana ki te pūtahitanga. Me nekeneke ina wātea ai tō ara. Me titiro karu ki te karu ki ētahi kaitaraiwa mēnā e āhei ana kia mōhio kua kitea koe e rātou.

## He pūtahitanga whai tohu

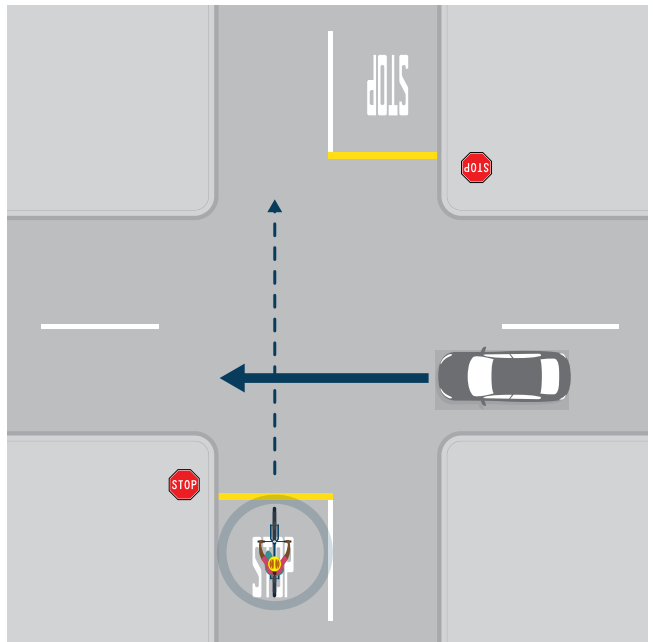
Whāia ngā tohu tū, ngā tohu tautuku, me ngā whaitohu rori, kātahi ka whāia ngā ture tautuku. Tirohia [Ngā ture tautuku](#).

### Ngā tohu tū me ngā whaitohu hoki

Atu i te tohu tū, ko te kupu STOP me te rārangi kōwhai kotahi ka peitatia ki runga i te rori.

I te tohu tū, me tū whakaroau koe. Me tū tae noa ki te wā kua tautuku koe i ngā waka katoa.

Mēnā kua tū hoki tētahi atu waka ki te tohu tū, whāia ngā ture tautuku ki te hātepe. Tirohia [Ngā ture tautuku](#).



Ko te tū ki te tohu tū - te tangata e eke paihikara ana ka tū ki te tohu tū, ā, ka tautuku ki te waka.

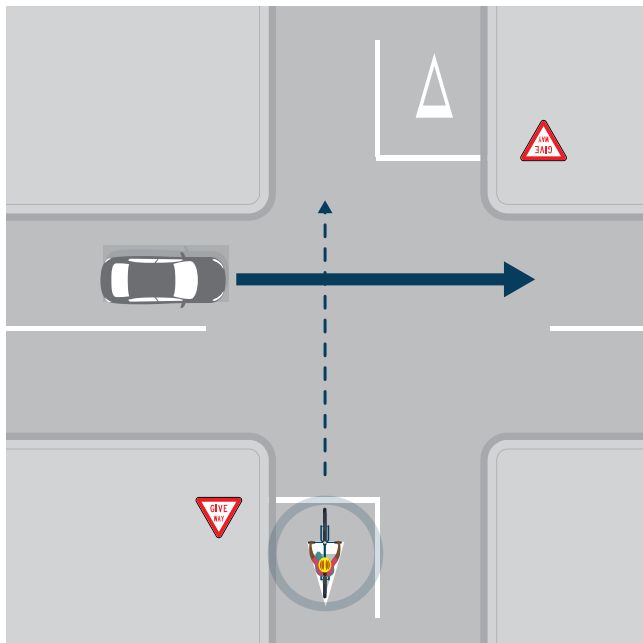


## Ngā tohu tautuku me ngā whaitohu

Atu i te tohu tautuku, ka peitatia he whaitohu tautuku tapatoru me te rārangi mā ki runga i te rori.

I te tohu tautuku, me āta haere koe me te whakarite ki te tū. Tautukua ngā waka katoa hāunga ērā kua tū ki te tohu tū.

Mēnā e ahu ana tō waka ki tētahi atu waka, ā, kei ngā tohu tautuku kōrua tahi, tēnā whāia ngā ture tautuku. Tirohia [Ngā ture tautuku](#).

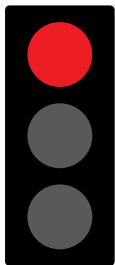


Ko te tāutuku ki te tohu tautuku – te tangata e eke paihikara ana ka tū ki te tohu tū, ā, ka tautuku ki te waka.

## He pūtahitanga whai tūrama ikiiki

He āhua ōrite ngā tohu, whaitohu rori, rama ikiiki me ngā ture tautuku ki ngā pūtahitanga whai tūrama ikiiki mō te hunga katoa i runga i te rori. Tirohia [Ngā ture tautuku](#).

Ko ētahi tohu, whaitohu, rama ikiiki e hāngai tonu ana ki te paihikara hei āwhina i a koe ki te whakamahi i ngā pūtahitanga. Tirohia [ngā rama ikiiki hāngai ki te paihikara \(whārangi 32\)](#), [Te whakamahi i ngā wāhi tū whatutoto \(whārangi 33\)](#), [ngā huri pīhuka \(whārangi 36\)](#) me [ngā paerongo paihikara \(whārangi 40\)](#).



Ko te tikanga o te iatohu whero me tū koe.



Ko te tikanga o te iatohu kōwhai ākuanei ka whero te rama. Me tū koe, hāunga e tino tata ana koe, ā, kāore e taea te tū.



Ko te tikanga o te iatohu kākāriki ka āhei koe te haere mēnā e haumarua ana.

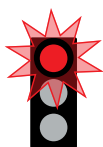
## Ngā rama ikiiki me ngā whaitohu rori

Kei ngā pūtahitanga whai tūrama ikiiki, ka whakahaere ngā rama ikiiki i ngā ture tautuku. Me noho tonu koe ki tō ara tae noa ki te wā whakawhiti i te pūtahitanga.

## Ngā rama ikiiki aro whānui

Mō ngā rama ikiiki aro whānui, me tautuku tonu koe i ētahi wā. Tirohia [Ngā ture tautuku](#).

- Mēnā e huri ana koe ki te taha matau, me tautuku koe ki ngā waka katoa e ahu mai ana ki a koe tae atu ki ērā e huri ana ki te taha matau.
- Ki te huri whakatemaui koe, me tautuku koe ki ngā tāngata e whakawhiti ana i te rori. Arā ko ngā tāngata e eke ana i ngā pūrere hāereere, ngā papawīra, ngā ī-kutarere me ngā kutarere.



Mēnā ka kite koe i ngā rama whero e kōwhā ana, me tū koe i mua i te rārangi whakatepe i runga i te rori, ā, me tū tonu tae noa ki te wā ka mutu te kōwhā. Ka kite pea koe i ngā rama whero e kōwhā ana ki ngā wāhi pērā i ngā whakawhitinga rerewē, ngā teihana ahi me ngā teihana waka tūroro.



Ko te tikanga o te iatohu kōwhai e kōwhā ana, kāore he iatohu rānei, kāore ngā rama ikiiki i te kā. Me whai e koe ngā ture tautuku pērā i te whai ki ngā pūtahitanga kore tohu. Tirohia [Ngā ture tautuku](#).

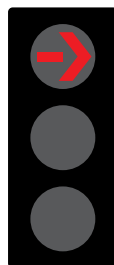
## Ngā rama ikiiki pere me ngā ara huri

Ina whakaatuhia ana ngā pere i runga i ngā rama ikiiki, he mea hāngai ki ngā waka e huri ana ki te ahunga ōrite ki te ahunga o te pere. I te nuinga o te wā e whakamahia ana ki ngā ara huri motuhake.

Ki te kore e whakaatuhia he pere, whāia ngā ture mō ngā rama ikiiki aro whānui e hāngai ana ki te ara e eke ana koe me te ahunga e hiahia ana koe ki te haere.

E tautuhia ana te whānuitanga o ngā whakatōpūtanga katoa o ngā rama ikiiki me ngā pere i roto i te wāhanga ture tautuku o te Puka Tikanga Rori tuihono i runga i te pae tukutuku o Waka Kotahi.

[www.nzta.govt.nz/givewayrules](http://www.nzta.govt.nz/givewayrules)



Ko te tikanga o te pere whero me tū koe mēnā e haere ana koe i te ahunga e tohua ana e te pere.



Ko te tikanga o te pere kōwhai me tū koe mēnā e haere ana koe i te ahunga e tohua ana e te pere, hāunga e tata ana koe ki te pūtahitanga, ā, kāore e taea te tū.

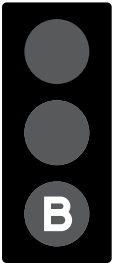


Ko te tikanga o te pere kākāriki ka āhei koe te haere mēnā e haere ana koe i te ahunga e tohua ana e te pere.

## KO TE B MŌ TE PAHI - ME TE PAHIKARA

E tohu ana te rama mā 'B' i roto i te huinga rama ikiiki whakaarotau pahi ki ngā pahi me ngā paihikara. Ka āhei koe te eke paihikara ki ngā ara pahi engari kua ki ngā ara pahi anake. Tirohia [Ngā ara pahi](#), [ngā ara pahi anake hoki](#) (whārangi 53).

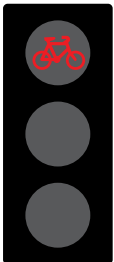
### Ngā rama ikiiki whakaarotau pahi



Kei ētahi pūtahitanga ngā ara motuhake me ngā rama ikiiki mō ngā pahi. Mēnā e tatari ana koe i roto i te ara pahi whai rama ikiiki whakaarotau pahi, haere i te wā ka whakaatuhia te rama mā 'B'. Ka homai tēnei rama i te tīmatanga tuatahi ki a koe me ētahi pahi i roto i te ara.

### Ngā rama ikiiki hāngai ki ngā paihikara

Kei ētahi pūtahitanga he rama ikiiki motuhake mō ngā tāngata anake e eke paihikara ana. Hei tauira, ka tuku pea ngā rama i ngā kaieke ki te tīmata i mua i ētahi atu ikiiki, ka whakahaere pea rānei i ngā kaieke i runga i ngā ara paihikara, ara tuari



Ko te tikanga o te waitohu whero me tū koe.



Ko te tikanga o te waitohu paihikara kōwhai me tū koe, hāunga e tino tata ana koe ki te pūtahitanga, ā, kāore e taea te tū.

He maha ngā rama ikiiki hāngai ki ngā paihikara e whai ana i ngā rama whero, kākāriki hoki.



Ko te tikanga o te waitohu kākāriki ka āhei koe te haere mēnā e haumaruru ana.

rānei. Kua tohua ngā rama ikiiki e hāngai ana ki ngā paihikara ki te waitohu paihikara.

Mēnā kāore he waitohu paihikara e whakaatuhia ana, whāia ngā ture mō ngā rama ikiiki aro whānui e hāngai ana ki te ara e eke ana koe me te ahunga e hiahia ana koe ki te haere.

### Te whakamahi i ngā ara huri

Kei ētahi pūtahitanga he ara motuhake mō ngā waka e huri ana. Ka tautuhi ngā pere ara, tohu, rama ikiiki rānei i ēnei ara huri. Me whakamahi koe i te ara tika mēnā e hiahia ana koe ki te huri, ā, mēnā kei roto koe i te ara huri ina uru ana ki te pūtahitanga, me huri koe.





## Te whakamahi i ngā wāhi tū whatutoto

Kei ētahi pūtahitanga ngā wāhi tū whatutoto mō ngā paihikara. Kua whaitohua ēnei wāhi ki te waitohu paihikara, i mua noa atu i te rārangi tū e tatari ai ētahi atu waka ki te pūtahitanga. E rua ngā momo – ngā pouaka tū whatutoto me ngā rārangi tū whatutoto.

Ka taea e koe te whakamahi i ngā wāhi tū whatutoto ina hiahia ana koe ki te tatari ki te pūtahitanga. Kia tūpato mēnā e hiahia ana koe ki te hipa i te tūtira ikiiki kia tae atu ki te wāhi tū whatutoto. Tirohia **Te hipa i ētahi atu tāngata, waka hoki (whārangi 17)**.

Ina tatari ana koe i roto i te wāhi tū whatutoto, kua ki te taha o te tūtira, ka kite ngā kaitaraiwa i a koe. Nā te mea ka tīmata koe ki mua o te tūtira, he iti iho te tūponotanga ka whakawhiti ngā waka huri i tō ara.

Me kua ngā kaitaraiwa o ētahi atu waka e tū, e aukati rānei i ngā wāhi tū whatutoto, i ngā ara paihikara whaitohu rānei i mua. Tae atu ki ngā kaieke motopaika.

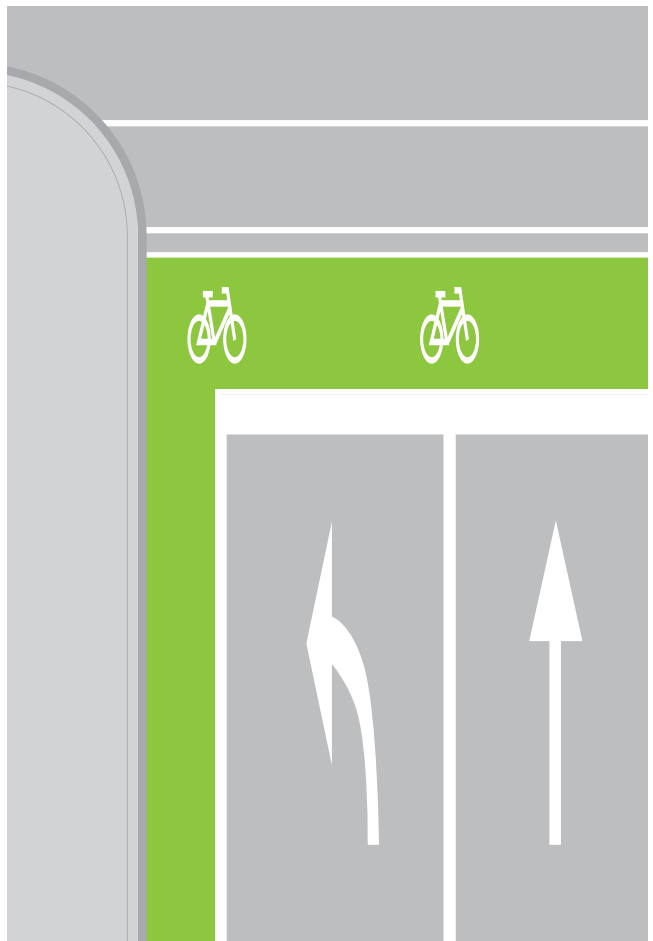


## Ngā pouaka tū whatutoto

He wahanga ngā pouaka tū whatutoto kei mua o ngā ara ikiiki o te pūtahitanga, e whaitohua ana ki te waitohu paihikara i runga i te papamuri kākārīki.

I ētahi wā he ara paihikara whaitohu i mua i ngā pouaka tū whatutoto, he kapa taimana peita rānei hei whakaatu i te whakamōhio paihikara. Tirohia [Ngā paerongo paihikara \(whārangī 40\)](#).

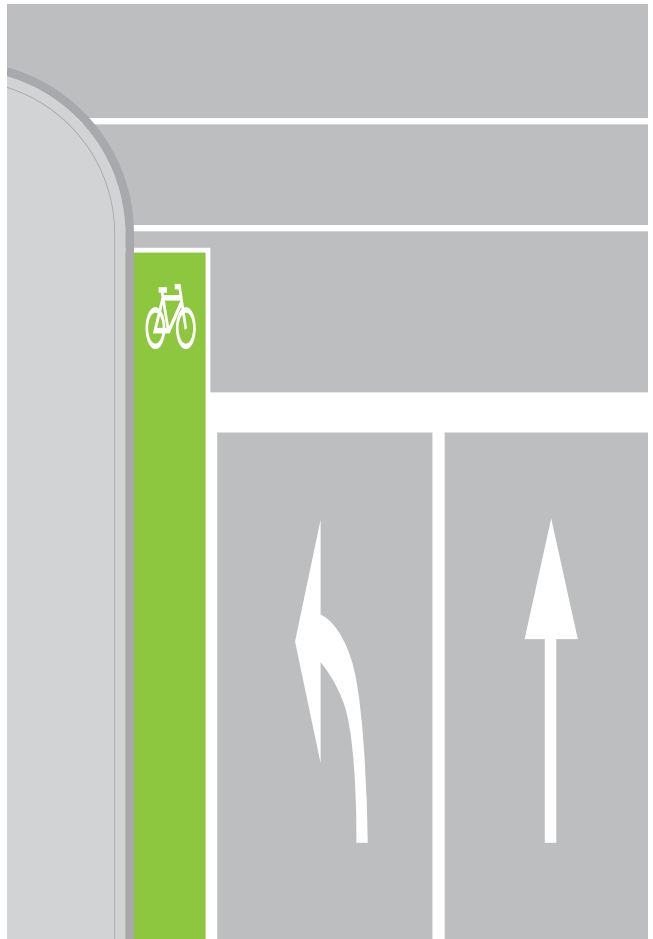
Ka taea e ētahi kaieke te uru ki te pouaka tū whatutoto kotahi. Mēnā ka taea, whakawāteahia te ara mō ētahi atu kaieke, ā, ka whakarite i a koe kia pai ai ki te ahunga e hiahia ana koe.





## Ngā rāangi tū whatutoto

Ko ngā rāangi tū whatutoto he rāangi tū e toro atu ana te ara paihikara i tua atu i te ara ikiiki whānui kei tōna taha. Ko te tikanga ka tū ngā kaieke i mua atu i te ikiiki aro whānui.



## He kōwhiringa kē ki te huri whakatematau ki te whakawhiti i ngā waka

He uaua te huri whakatematau ki ētahi pūtahitanga. Mēnā e hiahia ana koe, e āhei ana koe:

- te neke ki te taha mauī me te tū kia whai wā ki te whakawhiti
- te tū ki te wāhi haumaruru me te hīkoi me tō paihikara ki te whakawhiti pērā i te tangata hīkoiko
- whakaotia te huri ki ngā whetoko e whā hei huri pīhuka.

Ko te tikanga o te huri pīhuka ka āhei koe te ū ki te taha mauī o te rori i ngā wā katoa – ehara i te mea me whakawhiti koe i te ikiiki ki te huri whakatematau.

### Te huri pīhuka

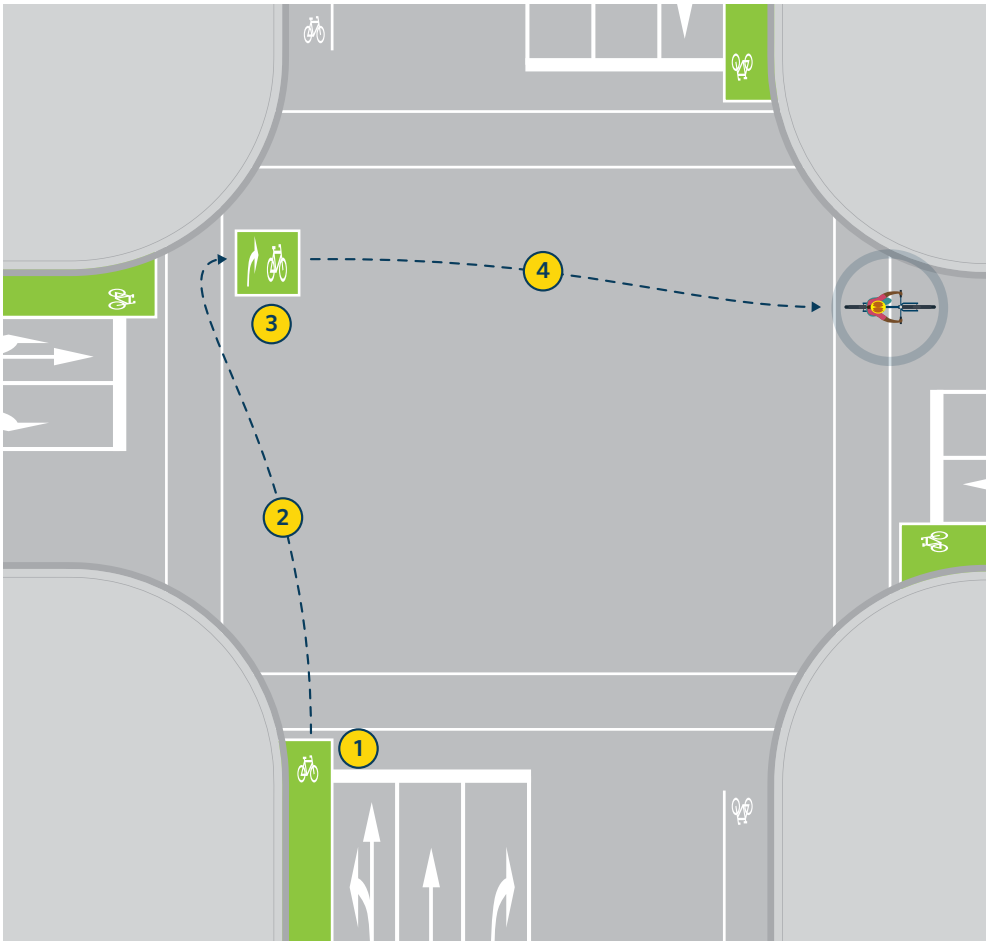
E whā ngā whetoko mō te huri pīhuka ki ngā rori whakawhiti me ngā rama ikiiki.

Ko ngā whetoko o te huri pīhuka:

1. Whakatata ki te pūtahitanga mā te ara paihikara, mā te ara whakatemauī rānei e ahu tōtika ana.

2. Whakawhiti te pūtahitanga ina huri te rama ikiiki mō te haere tōtika ki te kākāriki.
3. E tū ki te wāhi whaitohu o te rori i mua tata i te huanui hīkoi, me te huri ki te anga atu ki te ahunga e hiahia ana koe ki te haere. Mēnā kāore he wāhi whaitohu, e tū ki mua o te ara mō te ahunga e hiahia ana koe ki te haere. Me whakawātea i a koe ki ngā haere raro e whakawhiti ana me te ikiiki e hiahia ana ki te hipa i a koe e tatari ana.
4. Whakawhiti te pūtahitanga ina huri te rama ikiiki mō te haere tōtika ki te kākāriki.

He tino whaitake ngā huri pīhuka ki ngā rori whakawhiti whai rama ikiiki. Ko te tino take o te huri whakatematau ki ngā wāhanga he āwhina hoki ki ētahi atu tūāhua e hiahia ana koe ki te karo i te whakawhitinga ikiiki.

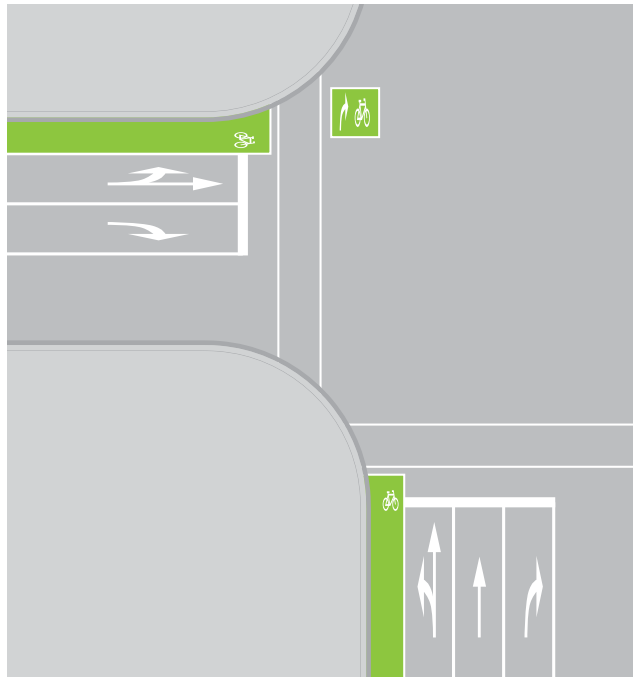


## Ko ngā whaitohu huri pīhuka me ngā tohu

Kei ētahi pūtahitanga he whaitohu, he tohu hoki hei āwhina i a koe ki te huri pīhuka. Tirohia a [Whaitohu rori \(whārangi 60\)](#) me [ngā tohu Mōhiohio \(whārangi 58\)](#).

Ko ngā whaitohu huri pīhuka he pouaka kākāriki kua whaitohua ki te paihikara me te pere huri. Ka whakaatu ēnei i te wāhi pai ki te tū me te tatari kia panoni ngā rama ikiiki – i mua o te ikiiki ki te ahunga e hiahia ana koe ki te haere, ā, atu i te ikiiki i tīmata ai koe.

Ka whakaatu ngā tohu huri pīhuka i te hoahoa huri pīhuka. Ka marohi ēnei i ngā huri pīhuka ki tētahi pūtahitanga motuhake.



Tohu huri pīhuka

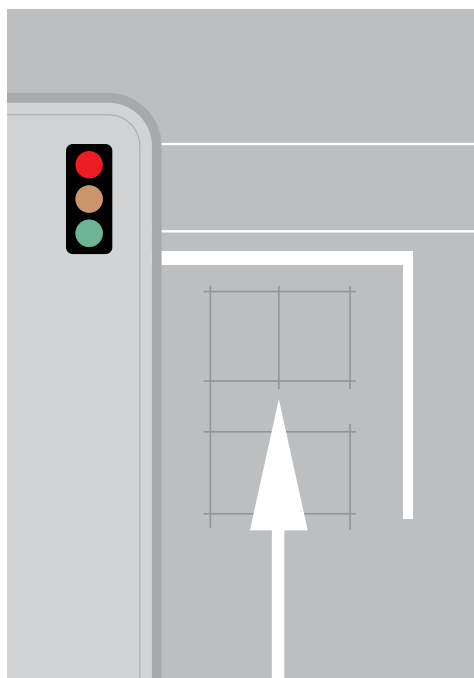


## Ko te whakahohe i ngā whakamōhio ki ngā rama ikiiki

Kei ngā pūtahitanga whai tūrama ikiiki katoa he paerongo waka e noho ana ki roto i te rori i mua i ngā rārangi tū mā o te pūtahitanga. Ina tū te waka ki runga ake i te paerongo waka, ka tuku karere ki te rama ikiiki e tatari ana koe. I ētahi wā kāore i te mōhiohia he paihikara nā te mea he iti iho ngā paihikara i ētahi atu waka.

E tū me tō paihikara ki runga ake i te paerongo waka kia mōhiohia ai kei reira koe. Kimihia ngā tohu o te tauwāhi o te paerongo – kimihia he rārangi tapahi i te rori, e uhia ana ki te tā i ētahi wā. Whakatūngia tō paihikara ki runga ake i tētahi o ngā rārangi tapahi.

Mēnā kua roa koe e tatari ana, ā, kāore tō paihikara i kitea, ka tīmata pea te pēhi i te pātene whakawhiti haere raro i ngā rama ikiiki.





## Ngā paerongo paihikara

Ko ētahi wāhi tū whatutoto me ngā wāhi whakawhitinga e whaitohua ana ki te kapa taimana hei whakaatu i te paerongo motuhake mō ngā paihikara. Whakatūngia tō paihikara ki runga ake i ngā taimana hei tīmata i ngā rama ikiiki.

## Ngā tohu whakatūpatō paihikara

Ko ngā tohu whakatūpatō paihikara he tohu whakatūpatō hohe kua waihangatia hei whakatūpatō i ngā kaitaraiwa e tata ana koe. Ka kite pea koe i ngā tohu whakatūpatō paihikara ki ngā arawhiti whāiti, ki runga, ki waho hoki i ngā rōnaki, ki ngā wāhi e whakawhiti ana koe i ngā arawaka oreore me ētahi atu wāhi pērā.

Ka aunoa te whakahohe o ētahi tohu whakatūpatō paihikara ina hipa koe ki runga ake i te paerongo paihikara e whaitohua ana ki ngā taimana. He pātene kei ētahi atu hei pēhi. I waihangatia ngā rama kia kā tonu tae ra anō ki te wā hipa koe i te wāhi ka tūtaki pea ki ngā kaitaraiwa.



E tautuhi ana ngā taimana kua whakarārāngitia i ngā paerongo paihikara



He tohu whakatūpatō paihikara



## NGĀ TAKAWHAWHE TINO TERE

Kia tūpato te whakatata atu ki ngā takawhawhe tino-tere. Atu i te whakakī i te ara, he pai ake ki te tatari ki te āputa nui i roto i te ikiiki kia āhei koe te haere pōkai i te takawhawhe me te kore tūraru o te whakawhitinga tere o tō ara e tētahi tangata. I ētahi wā he ngāwari ake ki te tū me te whakawhiti hei tangata hīkoi mēnā he kōwhiringa haere raro pai.

## Ngā takawhawhe

He āhua ōrite ngā tohu, ngā whaitohu rori, me ngā ture tautuku ki ngā takawhawhe mō te hunga katoa i runga i te rori.

### Ko te taunga ara me te tautuku i ngā takawhawhe

Neke ki waenganui o te ara i mua i te urunga ki te takawhawhe. Tirohia [a Whakakīia te ara \(whārangi 13\)](#). Me noho ki waenganui o te ara ki te pōkai i te takawhawhe. Ina wehe koe i te takawhawhe, neke atu ki te taha mauī o te rori mēnā e haumarua ana.

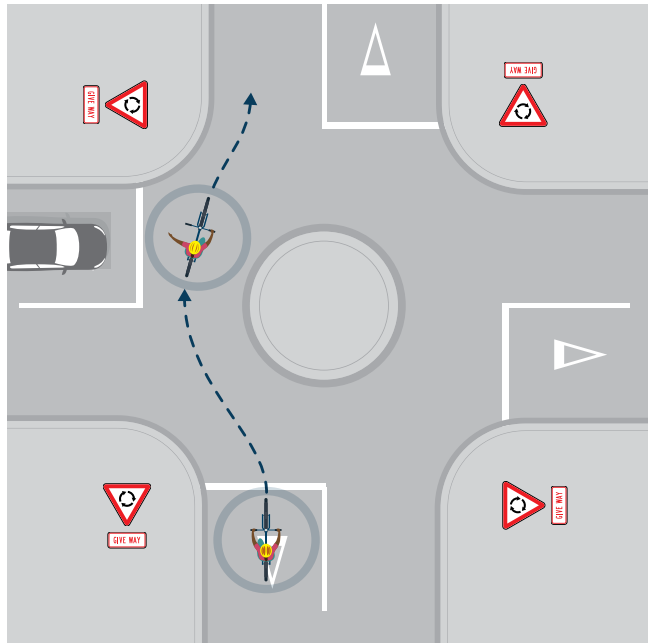
Me tautuku koe ki ngā waka kei runga kē i te takawhawhe, e uru ana rānei ki te takawhawhe mai i te rori ki tō taha matau. Whāia ngā tohutohu o te tohu, whaitohu rori, rama ikiiki rānei.

### Te rotarota ki ngā takawhawhe

Rotarota i mua i te uru, te puta atu rānei i te takawhawhe mēnā e huri whakatemauī, whakatematau rānei ana koe, mēnā ka taea e koe te whakahaere tonu i a koe e rotarota ana. Tirohia [a Rotarota \(whārangi 10\)](#).

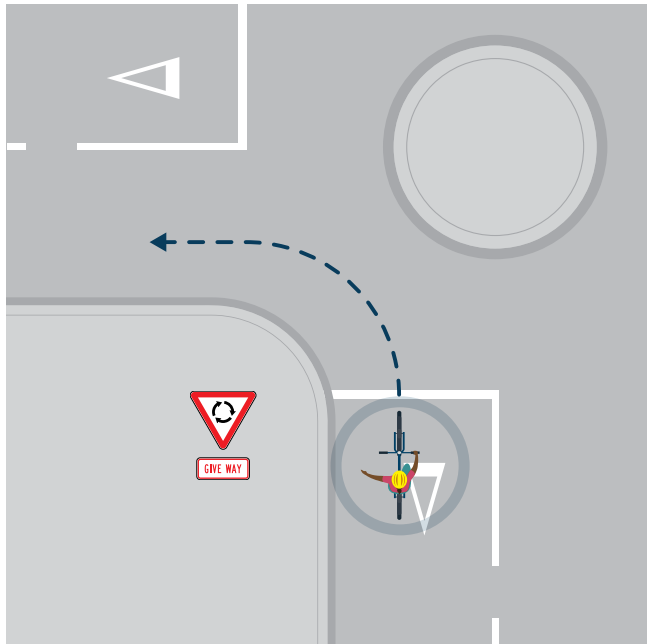
## Te eke tōtika i runga i te takawhawhe

Kaua e rotarota i mua i te urunga ki te takawhawhe. Rotarota whakatemalaū ina hipa koe i te putanga i mua i te mea e hiahia ana koe.



**Te huri whakatemauī i te takawhawhe**

Rotarota whakatemauī i mua i te urunga ki te takawhawhe. Rotarota whakatemauī i mua i te putanga i te takawhawhe.



## KAUA E ROTAROTA KI TE KORE E TAEA TE WHAKAHAERE TONU I TŌ PAHIKARA.

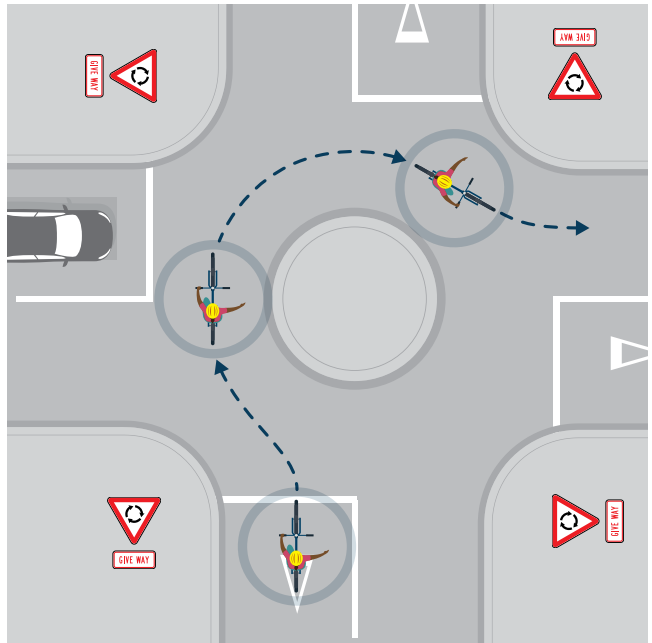
I ētahi wā me pupuri ō ringa e rua ki ngā hānara kia whakahaere tonu i te paihikara. E pai ana ki te rotarota anake ki te takawhawhe mēnā he haumarū.

Hei tauira, ina huri whakatematau i te takawhawhe ka rotarota pea koe te huri whakatematau, meatia ō ringa e rua ki ngā hānara ki te whakapōkai i te takawhawhe, ā, rotarota anō i mua tata tonu i te putanga. Ka rotarota pea koe mō te wā poto kia whakamōhio atu ki ētahi atu tāngata e huri ana koe, kua ko te katoa o te toru hekona.

I ētahi āhuatanga, pērā i ngā hau kaha, i runga i te papa tuaranga, karekau pea e taea e koe te rotarota.

### Te huri whakatematau i te takawhawhe

Rotarota whakatematau i mua i te urunga ki te takawhawhe. Rotarota whakatematau i a koe e huri ana i te takawhawhe. Rotarota whakatemauī ina hipa koe i te putanga i mua i te mea e hiahia ana koe.

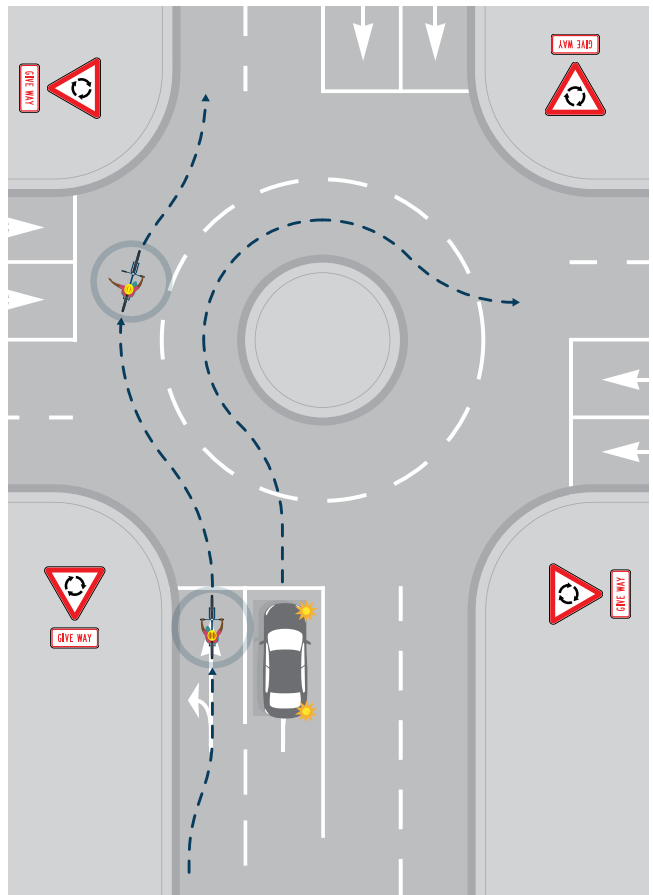


## Ngā takawhawhe ara-huhua

E uru ki te ara tika i mua i te takawhawhe. Hei tauria, mēnā e huri whakatemataua ana koe, ka tohutohu pea ngā tohu, ngā whaitohu rori rānei kia uru koe ki te ara matau.

Neke ki waenganui o te ara i mua i te urunga ki te takawhawhe, ā, katahi ka tautuku. Tirohia a [Taunga ara me te tautuku ki ngā takawhawhe \(whārangi 41\)](#). Kia rite tonu te rotarota. Tirohia a [Rotarota ki ngā takawhawhe \(whārangi 41\)](#).

He uaua ngā takawhawhe ara-huhua nā te mea he tino-tere, he oreore hoki. I ētahi wā he ngāwari ake te whai i te huarahi e karo ana i te takawhawhe, e taea ai rānei te whakawhiti hei tangata hīkoi mēnā he pai ngā kōwhiringa.



## Ngā Whakawhitinga

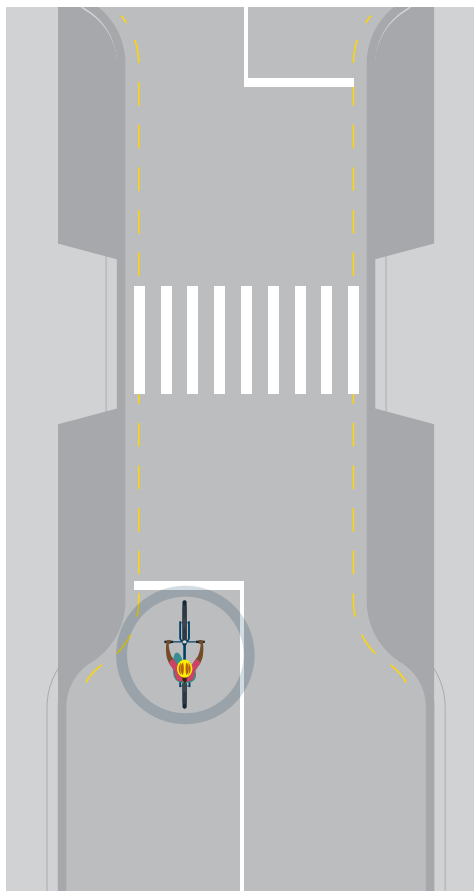
He tūmomo pūtahitanga ngā whakawhitinga. E whakaatu ana tēnei wāhanga mē pēhea te whakamahi i ngā whakawhitinga rerekē, ā, mā wai e tautuku. Ko ētahi whakawhitinga e kitea nuitia ana ko ngā whakawhitinga mō te hunga hīkoi, ngā whakawhitinga paihikara, ngā whakawhitinga hunga hīkoi, hunga eke paihikara hoki me ngā whakawhitinga kei ngā rārangi rerewē.

### Tautuku ki ngā whakawhitinga hunga hīkoi

He pūtahitanga ngā whakawhitinga hunga hīkoi ina noho te mana ki ngā tāngata haere mā raro. Mēnā e eke ana koe, me tautuku koe i te whakawhitinga hunga hīkoi. Kia pōturi te haere, ā, kia rite ki te tū mō te hunga hīkoi kei runga i te whakawhitinga, e tatari ana rānei ki te whakawhiti. He maha ngā tūmomo whakawhitinga hunga hīkoi.

### Ngā whakawhitinga hunga hīkoi (hepara) whaitohu

Kei ngā whakawhitinga hepara me te kore motu ikiiki, e tū me te tautuku ki ngā tāngata e hīkoi ana i runga i tētahi wāhanga o te whakawhitinga, e tatari ana ki te whakawhiti.



Whakawhitinga hepara

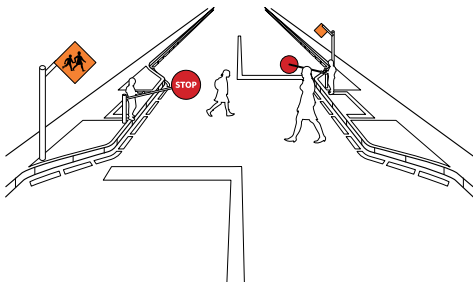


Kei ētahi whakawhitinga hepara he motu ikiiki i waenganui. E tū me te tautuku ki ngā tāngata e hīkoi ana i runga i tō taha o te rori, e tatari ana rānei ki te whakawhiti.

I ētahi wā ka whakahaere ngā tautiaki kura i te whakawhitinga hepara. E tū ina whakaputaina te tohu, ā, ka tatari kia unuhia te tohu.

### Ngā whakawhitinga kea (ngā wāhi whakawhitinga kura)

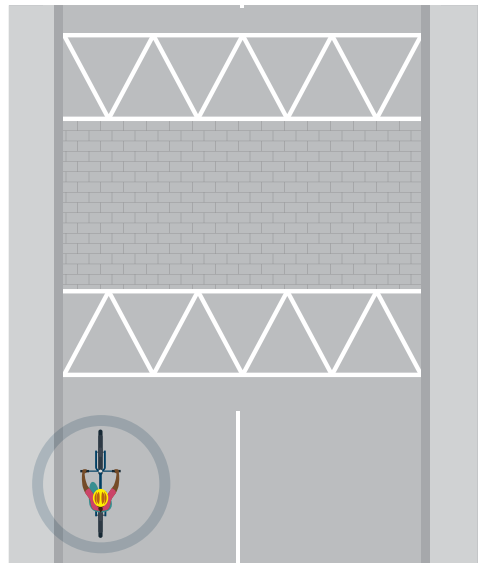
Ko te whakawhitinga kea he whakawhitinga tautiaki kura taupua kāore he whakawhitinga hunga hīkoi (hepara) whaitohu. E tū ina whakaputaina ana te tohu, ā, ka tatari kia unuhia.



Whakawhitinga kea

### Ngā whakawhitinga hūmārika

I te nuinga o te wā e hangaia ana ngā whakawhitinga hūmārika ki ngā pereki, kōhatu, i whakarewaina rānei i runga ake i te taumata o te rori. Ehara te whakawhitinga hūmārika i te whakawhitinga hunga hīkoi whai mana, engari me tū koe mō ngā tāngata i runga i te huanui hīkoi e tatari ana ki te whakawhiti. Me tautuku koe ki ngā tāngata kua tīmata kē ki te whakawhiti.



Whakawhitinga hūmārika

## ĀTA WHAKAWHITI I NGĀ REREWĒ

Kia kaua e mau ngā wīra o tō paihikara ki ngā rārangi rerewē, e paheke rānei i ngā āhuatanga mākū, whakawhitia ngā rārangi rerewē ki te koki hāngai, e tata ana rānei ki te āhua o taua koki.



### Hīkoi me tō paihikara i runga i ngā whakawhitinga tangata hīkoi

Mēnā e hiahia ana koe ki te whakawhiti i te whakawhitinga hunga hīkoi, me heke i tō paihikara katahi ka hīkoi. Ko ngā whakawhitinga anake e taea ana te whakawhiti ko ngā whakawhitinga paihikara, ngā whakawhitinga hūmārika, me ngā whakawhitinga mō te hunga hīkoi me te hunga eke paihikara.

### Te whakamahi i ngā whakawhitinga mō te hunga hīkoi me te hunga eke paihikara

I waihangatia ētahi whakawhitinga mō ngā tāngata haere mā raro me ngā tāngata e eke paihikara ana. He maha ngā wā he wāhanga ēnei o ngā ara tuari.

Tērā pea he huinga rama whakawhiti tae kei runga i ngā whakawhitinga tuari e whakaatu ana i ngā waitohu paihikara me ngā rama hunga hīkoi hoki. Whakawhiti mēnā he kākāriki te waitohu paihikara. Me whakawhiti anake te hunga hīkoi mēnā he kākāriki te waitohu hunga hīkoi – i te wā kotahi, i te wā motuhake rānei.

Kei ngā whakawhitinga tuari kore rama whakawhiti he whaitohu pea pērā i te whakawhitinga hepara, he whaitohu rerekē rānei, hei tauira, he ara paihikara motuhake kei te taha o te whakawhitinga hunga hīkoi tāeka.

Mēnā e whakamahi ana te huanui tuari i

te whakawhitinga hūmārika, ka āhei koe te whakawhiti mā runga paihikara me te kore heke iho ki te hīkoi. Ehara i te mea me tautuku ngā waka e whakatata ana ki te whakawhitinga hūmārika, engari ka āhei te tū mō ngā tāngata e tatari ana ki te whakawhiti.

Kia hūmārika tō eke paihikara mēnā e tata ana ki ngā tāngata haere mā raro. Tirohia [Te hipa i ētahi atu kaieke, hunga hīkoi, hoki \(whārangi 19\)](#).

### Te whakamahi i ngā whakawhitinga paihikara

Kua waihangatia ētahi whakawhitinga mō ngā tāngata e eke paihikara ana, pēnei i te whakawhiti i te pūtahitanga ina whakamahi ana i te huanui paihikara. Kei ngā whakawhitinga paihikara he huinga rama whakawhitinga tae e whakaatu ana i ngā waitohu paihikara. Whakawhiti mēnā he kākāriki te waitohu paihikara.

### Te whakawhiti haumaruru i ngā rārangi rerewē

Ina whakatata koe ki te whakawhitinga rerewē, e tika ana kia āta haere me te whakarite ki te tū. Mēnā he pere hohe, he rama, he ringa ārai rānei tō te whakawhitinga, me tatari koe kia oti ngā pere me ngā rama, ā, kua neke atu hoki te ārai.

Kāore he pere, he rama, he ārai rānei tō ētahi whakawhitinga rerewē. Tirohia te roanga ake o te rārangi tereina mēnā e haere mai ana ētahi tereina.





Whakawhitinga paihikara



Whakawhitinga taurua whai tohu

# Ngā huanui, ngā ara paihikara me ngā ara pahi hoki

Ka tūtaki pea koe ki ētahi tūmomo ara paihikara, huanui rānei, me ngā ara pahi, kawe tangata rānei. Kei te wehea ēnei i ētahi, te katoa rānei, o te ikiiki, e tuaritia ana rānei ki ngā tāngata e hīkoi ana.

Kāore e whakaturea kia whakamahi i ngā ara paihikara, huanui, ara pahi rānei, ā, e whai motika ana koe ki te whakamahi i te rori. Hei tauira, mēnā e tika ana te rori, ā, he tere tō haere, ka hiahia pea koe ki te karo i te tuari i ngā huanui tuari me ngā tāngata maha e hīkoi ana.

## He ara paihikara i runga i te rori

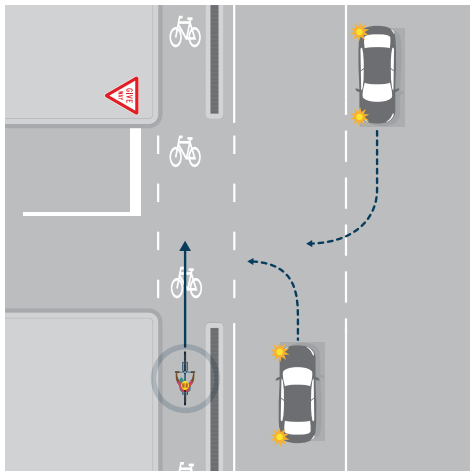
He ara peita ngā ara paihikara i runga i te ara rori, i waihangatia kia whakamahia e ngā tāngata e eke paihikara ana. Kei roto i ngā whaitohu ara paihikara ngā rārangi taitapa peita, waitohu paihikara, te kupu 'bike lane', ā, kei roto pea te peita kākāriki.



## Ngā huanui paihikara anake

Ko ngā huanui paihikara anake (ara paihikara motuhake rānei) e whaitohua ana ki ngā tohu, whaitohu rānei, ā, e whakawehea ōkikotia i te ikiiki i runga i te rori. Ko ētahi whakawehe he paeara, he pou, he wāhi whai tipu rānei. Kei waho atu i nga rori ētahi huanui paihikara-anake.

Ko ētahi he huanui paihikara-anake he ahunga kotahi, ko ētahi he ahunga rua. Eke paihikara ki te ahunga tika, e whakaatuhia ana e ngā tohu, whaitohu rānei. Eke ki te taha mauī, ā, hīpa ki tō taha matau.





## Ngā huanui tuari

Ko ngā huanui tuari kei waho o te rori pērā i ngā huanui hīkoi whānui, e whaitohua ana ki ngā tohu, whaitohu rānei, ā, e tū motuhake ana i te rori. Mō ngā tāngata e hīkoi ana, e eke paihikara ana tae atu ki ngā kutarere pana, ī-kutarere, retireti wīra, papawīra me ētahi atu kawenga ōrite.

Kia tūpato te hipa i ētahi atu tangata. Tirohia [a Hipa i ētahi atu kaieke, tangata hīkoi hoki \(whārangi 19\)](#). Kei ētahi huanui tuari he tohu hei whakamōhio ki a koe kei a wai te mana i runga i te ara, pērā i te hunga hīkoi. Me tautuku koe ki ngā tāngata kua whai mana ki runga i te ara.

## Ngā huanui hīkoi

He turekore te eke i runga i ngā huanui hīkoi engari ka taea pēnā kei te tuku mērā koe, he iti rawa rānei ngā wīra (he whitianga wīra iti iho i te 355 mirimita). Atu i ngā tāngata e hīkoi ana, ka taea te whakamahi huanui hīkoi e ngā tāngata mā runga kutarere pana, ī-kutarere, e eke paihikara ana tae atu ki ngā kutarere pana, īkutarere, retireti wīra, papawīra me ētahi atu kawenga ōrite.



He tohu huanui tuari



He huanui tuari whakatāuke, me ū tonu ngā tāngata e eke paihikara ana ki te taha o te huanui kua whaitohua mō ngā paihikara.



## He ara pahi, he ara pahi-anake hoki

He tohu, he whaitohu rānei kei ngā ara pahi me ngā ara pahi-anake hei tohu me whakamahi anake e ētahi tūmomo waka motuhake.



Kei ngā ara pahi he whaitohu rori BUS LANE me te tohu. Ka āhei koe te eke paihikara ki ngā ara pahi.



Kei ngā ara pahi anake he whaitohu rori pahi BUS LANE ONLY me te tohu. Me kaua koe e eke paihikara ki ngā ara pahi-anake.

E hāngai ana ngā ara pahi me ngā ara pahi-anake i ngā wā katoa, engari kua pena kei reira he tohu e tohutohu ana ko ēhea ngā rā me ngā wā ka hāngai atu. Ka āhei ētahi atu waka te whakamahi i ēnei ara i waho atu i ēnei rā me ēnei wā.

## Ngā ara kawē tangata

E whai ana ngā ara kawē tangata i ngā tohu i ngā whaitohu rānei ki te whakaatu ka taea te whakamahi e ngā waka whai pāhihi.

Ka āhei ngā pahi, ngā waka kōpiko, ngā tekehi, ngā motopaika me ngā motopaika iti, ahakoa kāore he pāhihi. E whakahāngai ana ngā ara pahi ara kawē tangata i ngā wā katoa hāunga e tohutohu ana tētahi tohu i ngā rā me ngā wā e hāngai ana.



E tautuhi ana tēnei tohu i te ara kawē tangata kia kotahi te pāhihi kotahi, neke atu rānei i roto i te waka (T2).

# Ngā tohu rori, whaitohu rori hoki

Ka whakaatu ngā tohu rori kei hea koe, ā, me aha koe. E hiahiatia ana kia haumarua ai ngā tāngata katoa. Kei tēnei wāhanga ngā tohu e kitea whānuitia ana, ā, ka whakamāramatia hoki ngā tikanga.

E toru ngā tūmomo tohu:

- ngā tohu whakature
- ngā tohu whakatūpato
- ngā tohu mōhihio



Arawhiti ahunga-kotahi: tautuku ki ngā waka e ahu mai ana ki a koe.



Arawhiti ahunga-kotahi: kei a koe te whakaarotau.

## Ngā tohu whakature

He whero, he kikorangi rānei ngā tohu whakature. Ka whakaatu i ngā mea me mahi koe, ā, me kaua koe e mahi.



Me tū whakaroua koe, tautuku ki te ikiiki, ā, neke atu ina e wātea ana tō ara.



Me āta haere koe, ā, ka tautuku (me tū rānei mēnā e hiahiatia ana).



Me āta haere, ā, me whakarite ki te tū mō te ikiiki i te takawhawhe, e uru ana rānei ki te takawhawhe i te taha matau.



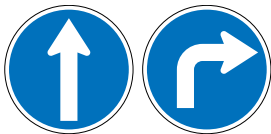
Me kaua koe e eke paihikara ki konei.



Me kaua e huri whakatemauī ki konei.



Me kaua e uru ai ki tēnei rori.



Me neke koe i te ahunga e whakaatuhia ana i runga i te pere.



He huanui tuari tēnei mō te hīkoi me te eke paihikara.



Tautiaki kura: me tū koe, ā, me tū tonu tae atu ki te unuhanga o te tohu.



Hīkoi i runga i te taha mauī anake, ā, eke i tō paihikara ki te taha matau.



Ara paihikara



Me puta koe mēnā e eke paihikara ana koe.



He ara pahi e taea ana e ngā paihikara me ngā motopaika te whakamahi.



He ara pahi anake hei whakamahinga mā ngā pahi anake.



He aweretanga ki te tohu waeture mēnā e eke paihikara ana koe.



## He tohu whakatūpato

He hanga-taimana ngā tohu whakatūpato i te nuinga o te wā. E whakatūpato ana i a koe kia haumarua ai koe me ētahi atu tāngata.

He kōwhai he kōwhai kōrekoreko/kākāriki rānei ngā tohu whakatūpato pūmau. He karaka ngā tohu taupua.



Kia tūpato ki ngā kaieke paihikara.



He whakawhitinga huanui paihikara kei mua



Kia tūpato ina eke paihikara ana i runga i ngā ara tereina





Kia tūpato ki ngā tamariki



Whakawhitinga hunga hīkoi



Ka whāiti te rori kei mua



Papa pānekeneke



He ara tereina kei mua



He takawhawhe kei mua



He popohau



He mahinga rori kei mua



E tū ina tonoa koe



He autaki mō te eke paihikara ki te taha mauī



He paheketa



Whakahipa i ngā tāngata eke paihikara ana ki te tawhiti haumarū, ā, ina āhei ana te āta haere.

## Ngā tohu mōhiohio

He whānui ngā tae me te rahi o ngā tohu mōhiohio.



Ka āhei koe te huri whakatemauī, engari i te tuatahi tautuku ki te hunga hīkoi me ngā waka.



E marohitia ana te huri pīhuka mō ngā paihikara e huri whakatematau ana ki te pūtahitanga kei mua.



Whakamahia te pakihwi mauī mēnā e eke paihikara ana koe.



Whakawhiti ki konei mēnā e eke paihikara ana koe.



Ka āhei ngā kaieke paihikara ki te haere ki ngā ahunga e rua i roto i te ara paihikara piritaha.



Whakamahia te rōnaki ki te wehe i te rori i konei mēnā e eke paihikara ana koe.



E whakatūturu ana kei runga te kaieke paihikara ki te NZCT, ā, e huri ana te huarahi ki te taha matau.



E whakaatu ana i te ara ki te pokapū mōhiohio tino tata.



Huarahi mō te eke paihikara, me te wāhi haere.



Pāka paihikara



Te whakatūturutanga i te huarahi me ngā pāmamao.



E whakaatu ana i ngā pāmamaotanga ki ngā wāhi.





## Ngā whaitohu rori

He whaitohu hārō te waitohu paihikara me ngā pere e rua i runga ake. Ka whakamaumahara ngā whaitohu hārō i ngā tāngata katoa ka āhei ngā tāngata eke paihikara te whakakī i te ara. Tirohia a [Whakakī i te ara \(whārangi 13\)](#).

Ko te whaitohu huri pīhuka he pouaka kākāriki i whaitohua ki te paihikara me te pere huri. Ka whakaatu i te wāhi pai ki te tū me te tatari i te wā o te huri pīhuka. Tirohia [He kōwhiringa kē ki te huri whakatematau ki te whakawhiti i ngā waka\(whārangi 36\)](#).

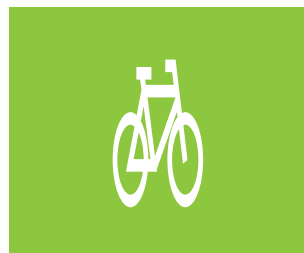
Ko te whaitohu pouaka tū whatutoto he pouaka kākāriki i whaitohua ki te waitohu paihikara. Ka taea e koe te whakamahi i ngā wāhi tū whatutoto ina hiahia ana koe ki te tatari ki te pūtahitanga. Tirohia a [Whakamahia ngā wāhi tū whatutoto \(whārangi 33\)](#).



Ngā whaitohu hārō



Whaitohu huri pīhuka



Ngā pouaka tū whatutoto





---

Mēnā he pātai anō āu,  
ka taea e koe te tuhi mai ki a mātou:

Waka Kotahi NZ Transport Agency  
Private Bag 6995  
Wellington 6141

E wātea ana hoki tēnei whakaputanga i runga  
i tō mātou pae tukutuku ki

[www.nzta.govt.nz](http://www.nzta.govt.nz)

---