

|                      |                    |                          |                            |                                 |                       |
|----------------------|--------------------|--------------------------|----------------------------|---------------------------------|-----------------------|
| 14,100<br>Population | \$823<br>GDP (\$M) | \$152<br>Valuation (\$M) | \$5.6<br>Expenditure (\$M) | \$397<br>Expenditure per capita | 58%<br>FAR            |
| 648<br>Total (km)    | 392<br>Sealed (km) | 257<br>Unsealed (km)     | 487<br>Rural (km)          | 161<br>Urban (km)               | 209<br>No. of bridges |

## Activity Management

Planning, Procurement and Data Quality

### Activity Management Planning

Planning quality: 2.3 out of 3.0 (Good)

Co-investment planning quality: 1.8 out of 3.0 (Fit for purpose)

### Procurement

Smart buyer self-assessment: 55 out of 70 (Developing)

### Data Quality

Asset management at expected standard (%) and Score

## Service Performance

LGA Non-Financial Performance Measures

| Annual Targets Achieved                                  | 2015-25 Long Term Plan |         |         | 2018-28 Long Term Plan |         |         |
|--|------------------------|---------|---------|------------------------|---------|---------|
|  | 2015/16                | 2016/17 | 2017/18 | 2018/19                | 2019/20 | 2020/21 |
| Provision of roads and footpaths                         | ●                      | ●       | ●       | ●                      | ●       | ●       |
| Road safety  | ●                      | ●       | ●       | ●                      | ●       | ●       |
| <sup>1</sup> Condition of the sealed road network        | ●                      | ●       | ●       | ●                      | ●       | ●       |
| Maintenance of the sealed road network                   | ●                      | ●       | ●       | ●                      | ●       | ●       |
| Condition of the footpaths within the local road network | ●                      | ●       | ●       | ●                      | ●       | ●       |
| Response to service requests                             | ●                      | ●       | ●       | ●                      | ●       | ●       |

Source: TA Annual Reports

## Co-Investor Assurance

Investment Performance

| Investment Audit (Four Grades) | Technical Audit (Four Grades)       |
|--------------------------------|-------------------------------------|
| Contract Management: ●         | Activity Management Planning: ●     |
| Financial Management: ●        | Data Quality: ●                     |
| Procurement: ●                 | Network Condition and Management: ● |
| Professional Services: ●       | Road Safety: ●                      |
| Previous Audit Issues: ●       | Previous Audit Issues: ●            |

Source: Waka Kotahi, Audit and Assurance, Investment Audit Report Sep-21

## Delivery

Expenditure, Funding, Cost Efficiency and Valuation

\$21.1M (83.4%)

Total 2018-21 NLTP Budget (\$M)  
Total Budget Spent (%)

### Co-Invested Expenditure

All transport activities

### Funding

Co-invested expenditure and funding

### Activity Class Expenditure

Road safety promotion

### Valuation

Road assets

### Cost Efficiency

Total expenditure / length (\$1,000 / km)

### Activity Class Expenditure

New and improved walking and cycling facilities

### Cost Efficiency

Maintenance, operations and renewals expenditure / length (\$1,000 / km)

## Achievements

Works Completed, Amenity and Road Condition

-0.6%

Ride Quality (STE)

### Works Completed

Pavement rehabilitation (lane kms)

### Works Completed

Pavement resurfacing (lane kms)

### Percentage of network renewed

### Road Condition (Sealed Roads)

Pavement condition

### Amenity (Sealed Roads)

Ride quality (roughness of the roads)

### Amenity (Sealed Roads)

Peak and average road roughness (NAASRA)

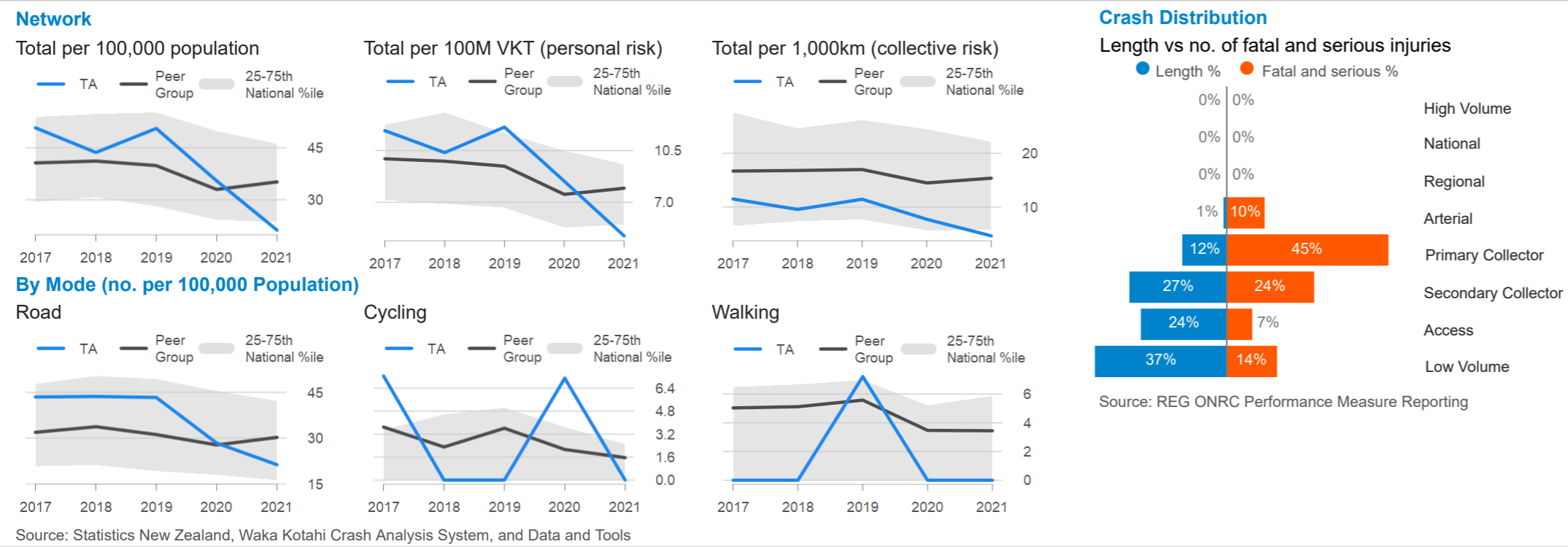
### Road Condition (Sealed Roads)

Surface condition

## Safety

Fatal and Serious Injuries

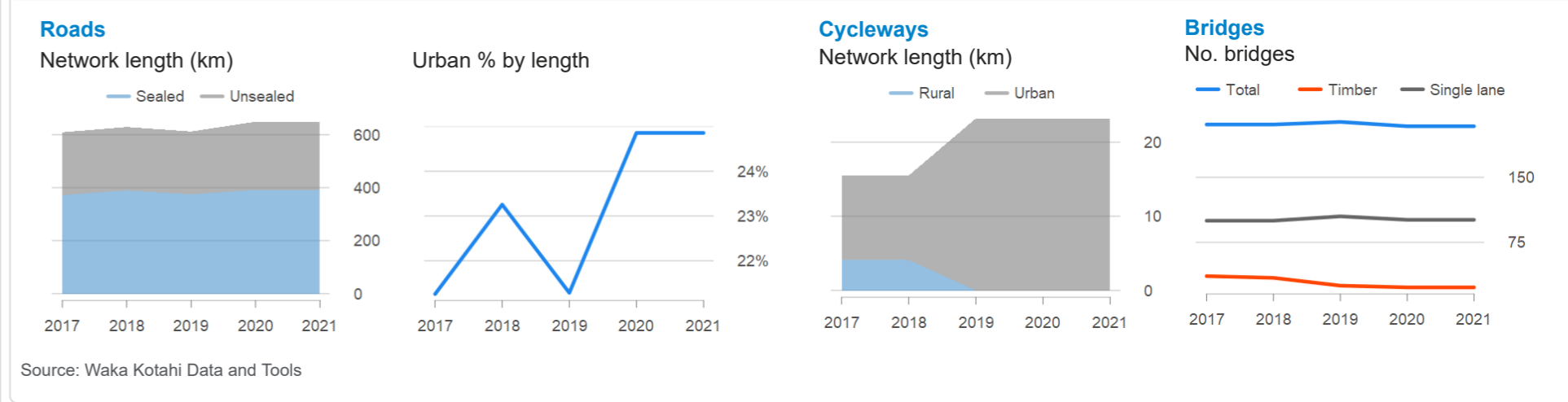
**6** ↓ Fatal & Serious Injuries/Trend (5 Year Annual Avg)



## Network Physical Characteristics

Roads, Cycleways and Bridges

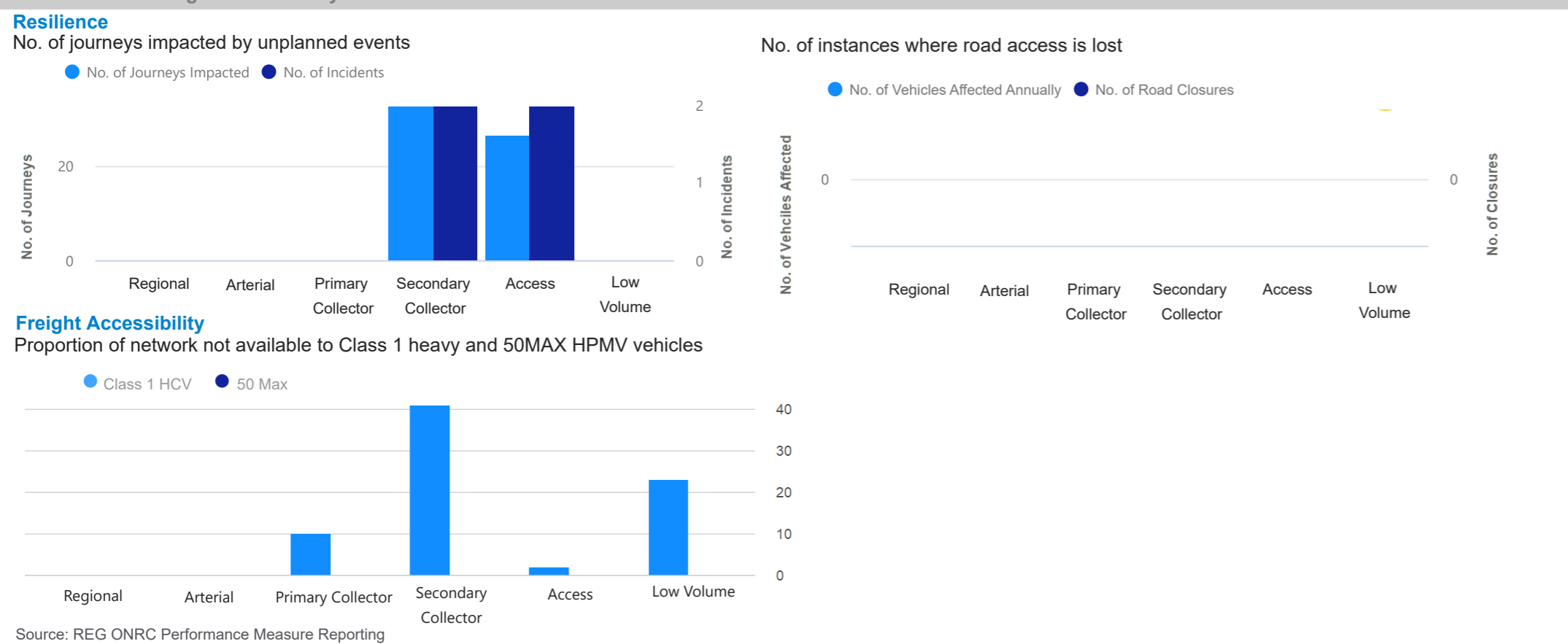
**10 (1.6%)** Network Length Growth km (%) (5 Year Annual Avg)



## Network Availability and Accessibility

Resilience and Freight Accessibility

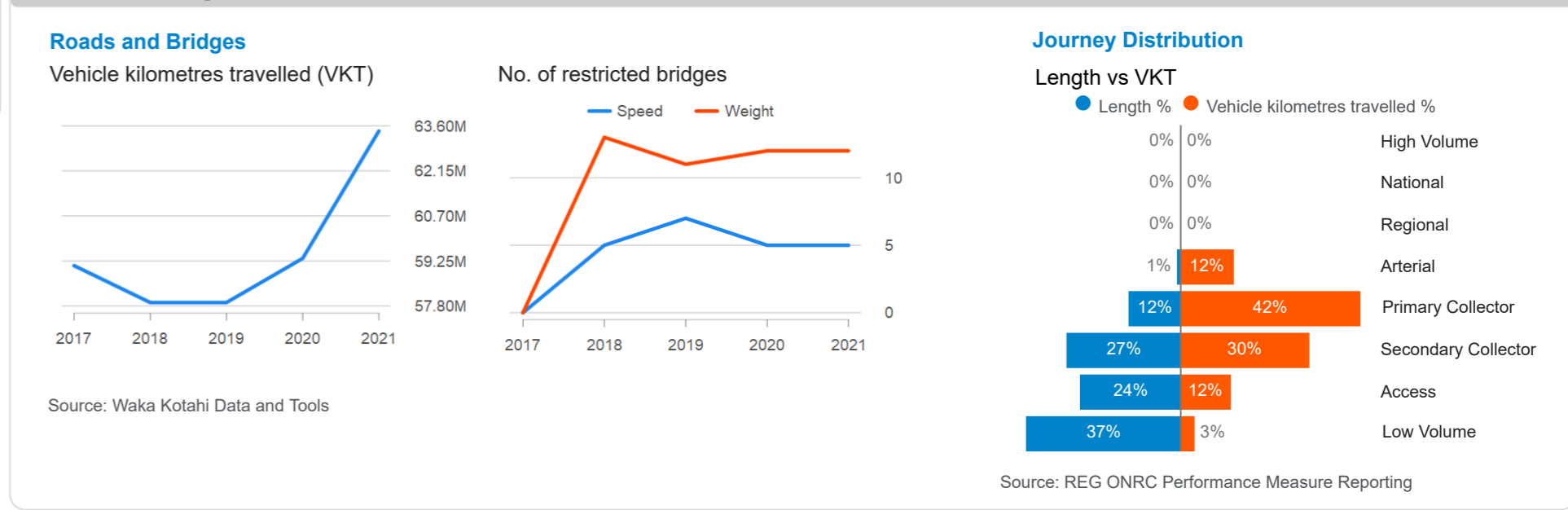
**100%** Proportion Network Accessible to Class 1 and 50MAX



## Road Network Use

Roads and Bridges

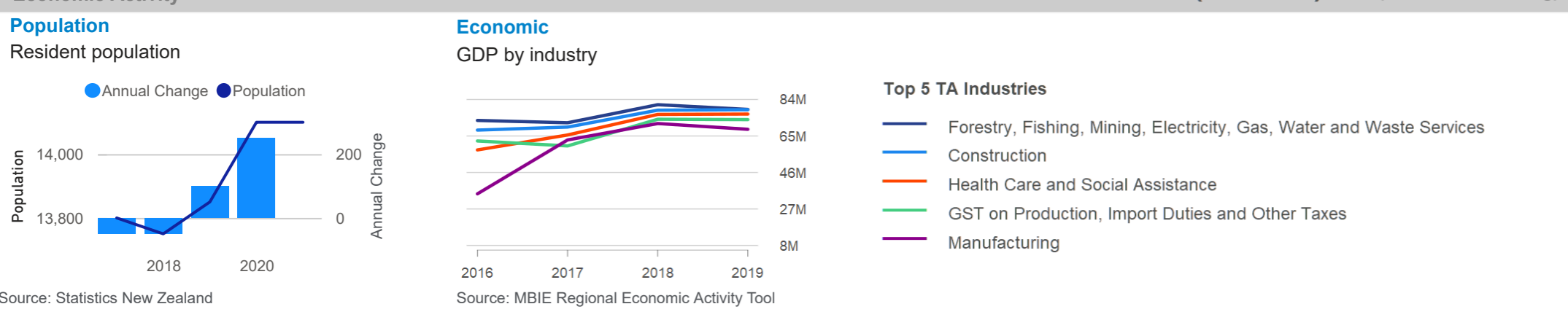
**63 (1.7%)** Million VKT (Latest Year)/5 Year Annual Avg % Increase



## Territorial Activity

Economic Activity

**50 (0.4%)** Population Growth (5 Year Annual Avg)



## Public Transport

Fleet Size, Network Use and Community Served

**No data** Passenger kms (5 Year Annual Avg Trend)

