

# RCA Pre-approved HPMV Routes

## Hutt City

### Overview

#### Legend

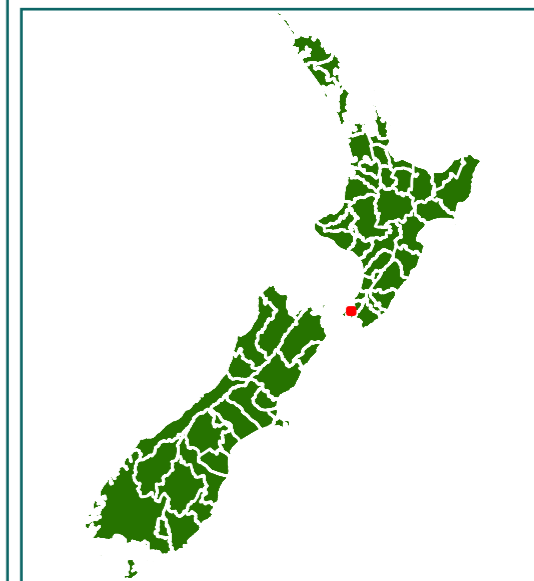
High productivity motor vehicles (HPMV) Routes

— Local Road

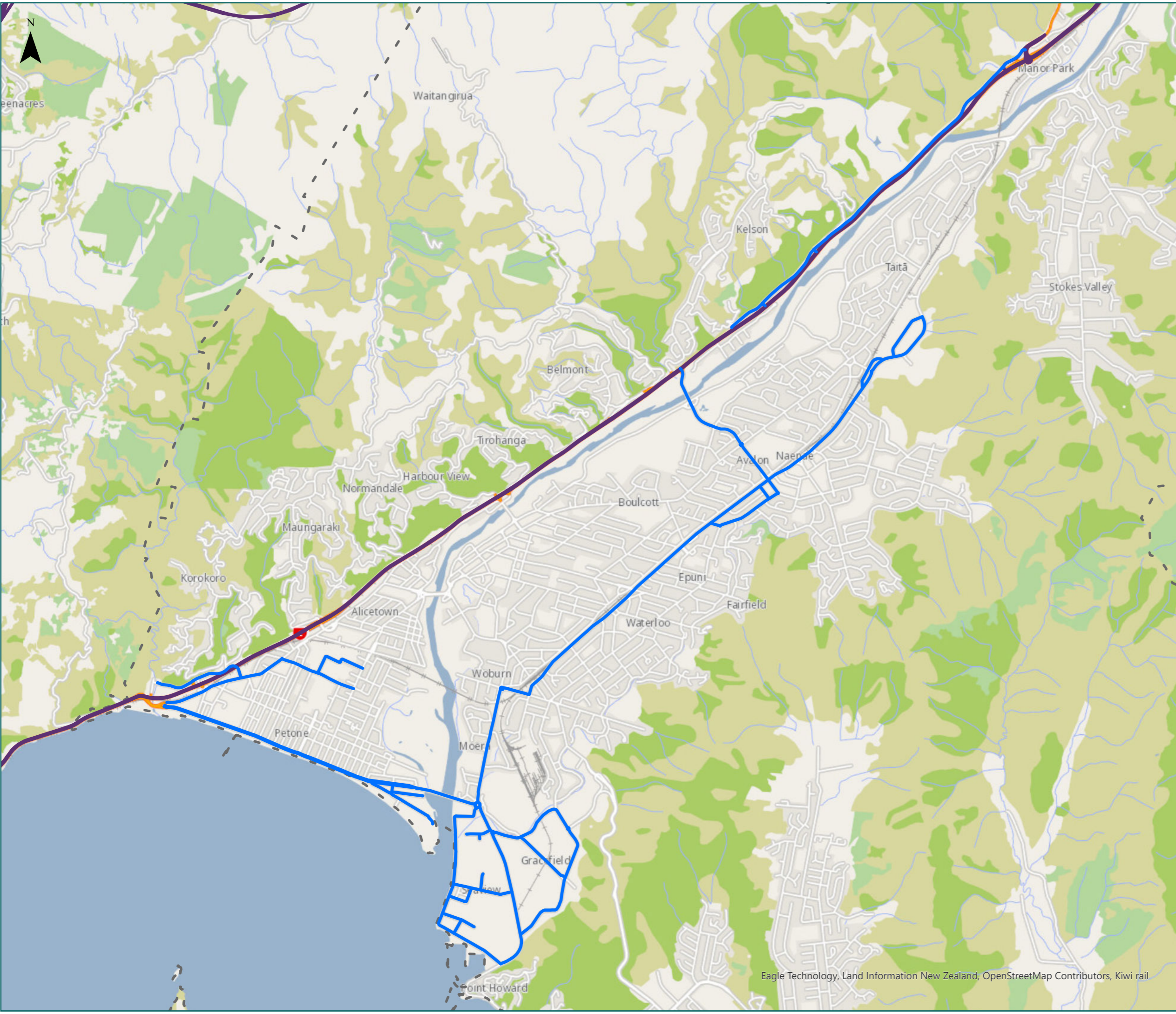
Full High Productivity Motor Vehicle Routes (SH)

— State Highway

- - Territorial Authority Boundary



0 0.6 km





# RCA Pre-approved HPMV Routes

Hutt City  
Petone

## Legend

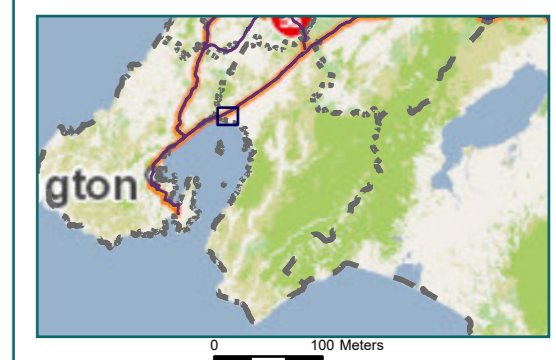
- Local Road
- State Highway
- Territorial Authority
- Boundary

Page 1 of 9

| Road/Street Name   | Extent of Road/Street |
|--------------------|-----------------------|
| THE ESPLANADE      | Full length           |
| UDY ST             | Full length           |
| HUTT ROAD (PETONE) | from SH2 to Udy St    |
| PITO-ONE ROAD      | Full length           |
| BOUVERIE ST        | Full length           |
| KOROKORO ROAD      | Full length           |



\* For the list of roads please refer to the index table in the end of the document.





# RCA Pre-approved HPMV Routes

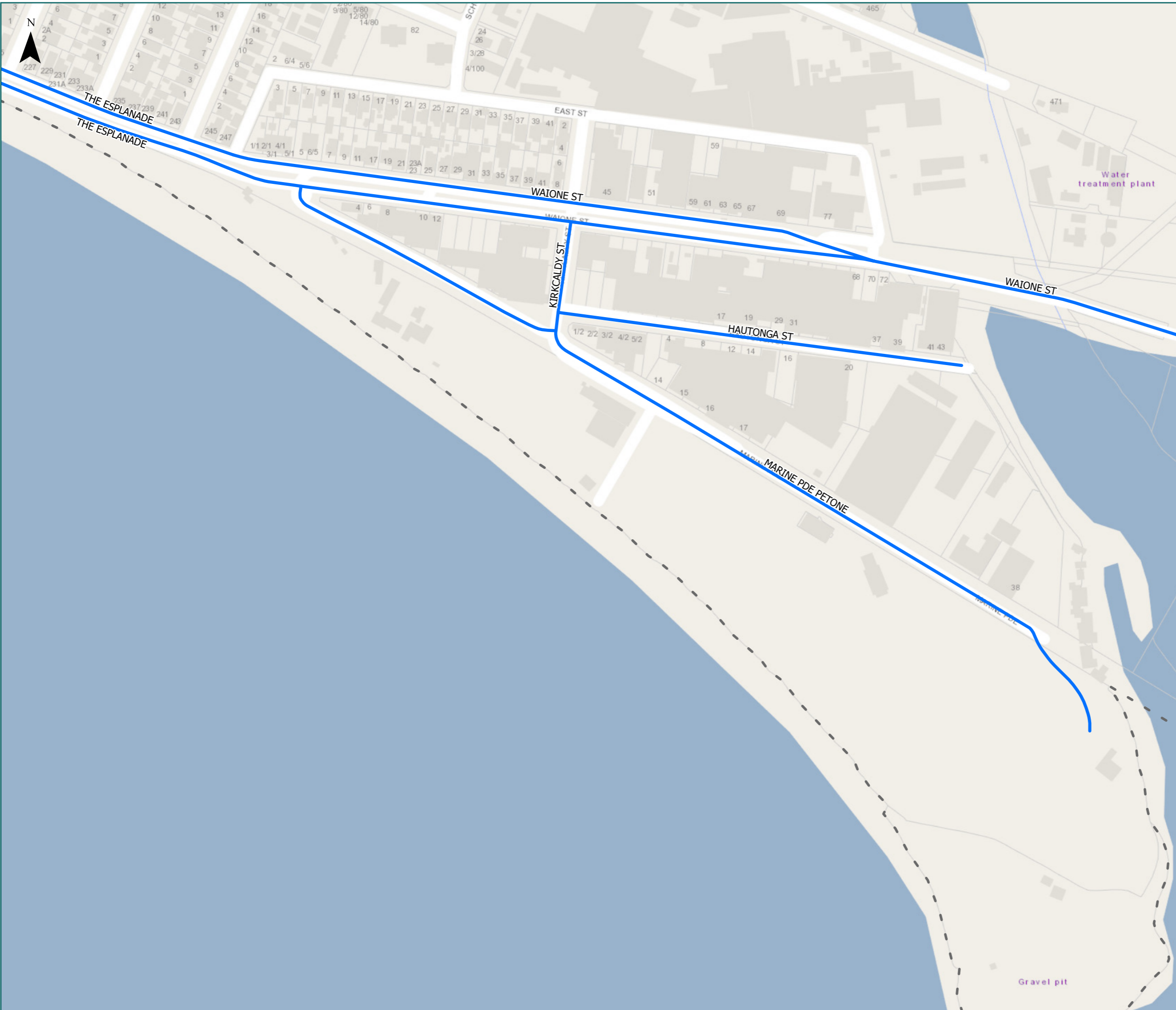
Hutt City  
McEwan Park

## Legend

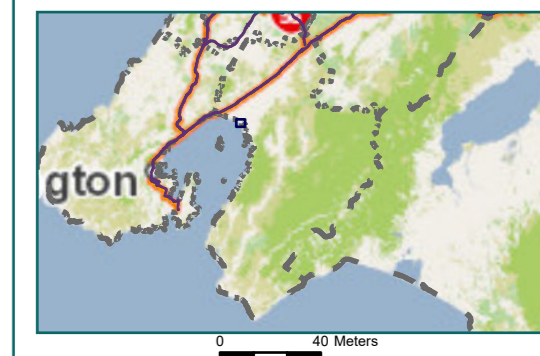
- Local Road
- Territorial Authority
- - - Boundary

Page 2 of 9

| Road/Street Name  | Extent of Road/Street                       |
|-------------------|---|
| THE ESPLANADE     | Full length                                 |
| MARINE PDE PETONE | Full length                                 |
| HAUTONGA ST       | Full length                                 |
| WAIONE ST         | Full length                                 |
| KIRKCALDY ST      | from Waione St to Marine Parade (South end) |



\* For the list of roads please refer to the index table in the end of the document.





# RCA Pre-approved HPMV Routes

Hutt City  
Gracefield

## Legend

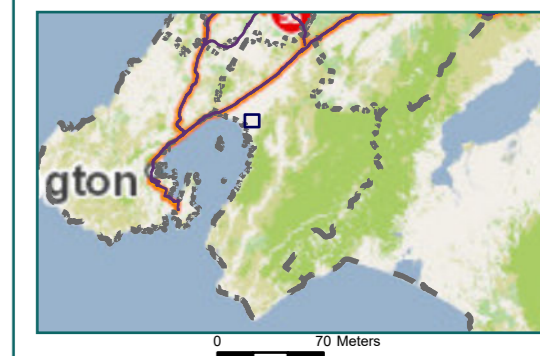
- Local Road
- Territorial Authority
- Boundary

Page 3 of 9

| Road/Street Name | Extent of Road/Street |
|------------------|-----------------------|
| SEAVIEW RD       | Full length           |
| GOUGH ST         | Full length           |
| RANDWICK RD      | Full length           |
| PARKSIDE RD      | Full length           |
| PORT RD          | Full length           |
| WAIONE ST        | Full length           |
| HUTT PARK RD     | Full length           |
| BELL RD          | Full length           |
| GRACEFIELD RD    | Full length           |
| WATERMAN ST      | Full length           |



\* For the list of roads please refer to the index table in the end of the document.





# RCA Pre-approved HPMV Routes

Hutt City  
Seaview

## Legend

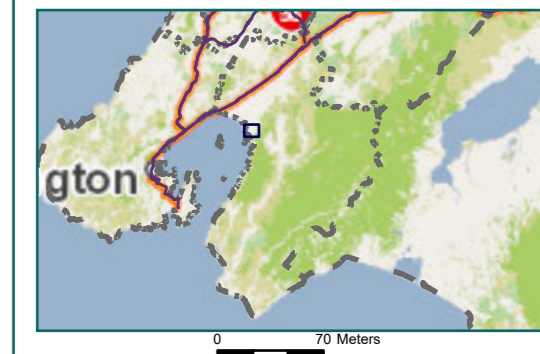
- Local Road
- Territorial Authority
- Boundary

Page 4 of 9

| Road/Street Name | Extent of Road/Street |
|------------------|-----------------------|
| SEAVIEW RD       | Full length           |
| MARCHBANKS ST    | Full length           |
| BARNES ST        | Full length           |
| PORT RD          | Full length           |
| TOOP ST          | Full length           |
| HUTT PARK RD     | Full length           |
| GRACEFIELD RD    | Full length           |
| MEACHEN ST       | Full length           |
| WAREHAM PLACE    | Full length           |



\* For the list of roads please refer to the index table in the end of the document.





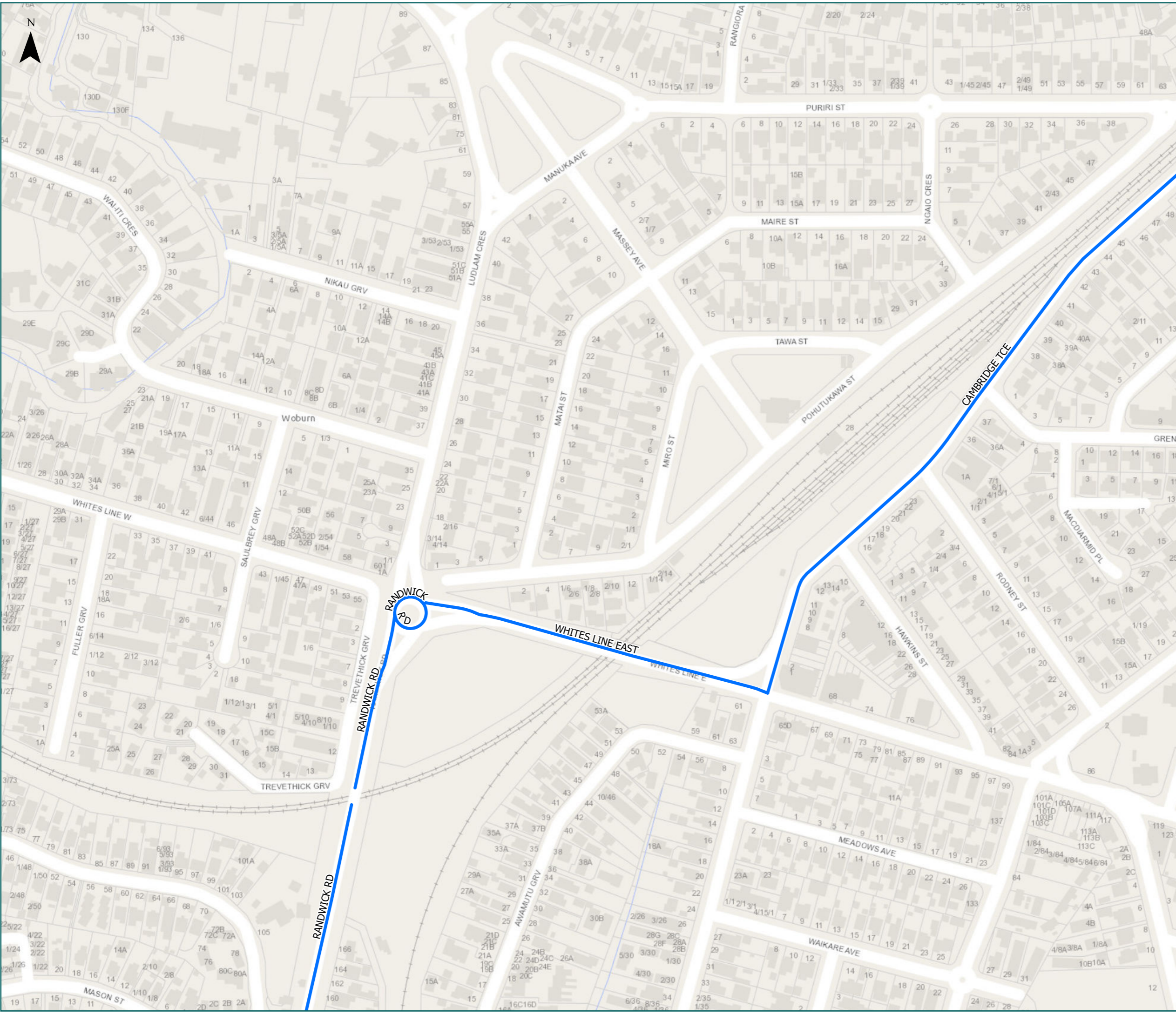
# RCA Pre-approved HPMV Routes

Hutt City  
Woburn

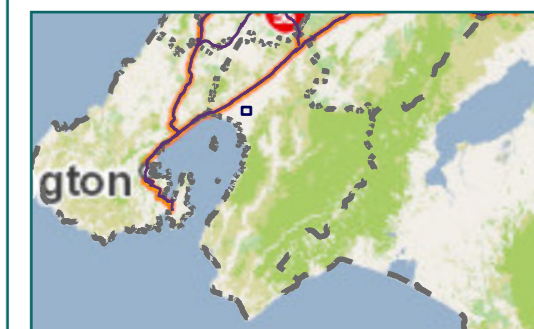
## Legend

- Local Road
- Territorial Authority
- Boundary

| Road/Street Name | Extent of Road/Street |
|------------------|-----------------------|
| RANDWICK RD      | Full length           |
| CAMBRIDGE TCE    | Full length           |
| WHITES LINE EAST | Full length           |



\* For the list of roads please refer to the index table in the end of the document.





# RCA Pre-approved HPMV Routes

Hutt City  
Waterloo

## Legend

- Local Road
- Territorial Authority
- Boundary

Page 6 of 9

| Road/Street Name | Extent of Road/Street |
|------------------|-----------------------|
| CAMBRIDGE TCE    | Full length           |



\* For the list of roads please refer to the index table in the end of the document.





# RCA Pre-approved HPMV Routes

Hutt City  
Fairfield & Naenae

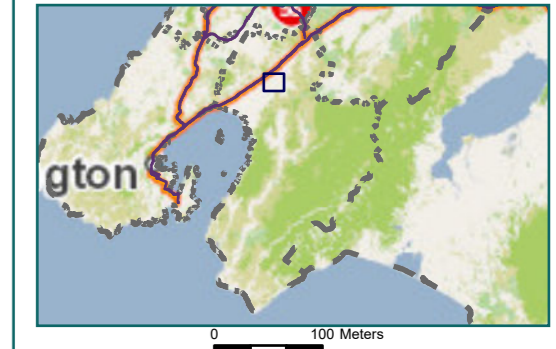
Legend

- Local Road
- State Highway
- Territorial Authority
- Boundary

| Road/Street Name | Extent of Road/Street          |
|------------------|--------------------------------|
| CAMBRIDGE TCE    | Full length                    |
| NAENAE RD        | from Cambridge Tce to Daysh St |
| DAYSH ST         | Full length                    |
| FAIRWAY DR       | Full length                    |
| CLENDON ST       | Full length                    |



\* For the list of roads please refer to the index table in the end of the document.





# RCA Pre-approved HPMV Routes

Hutt City

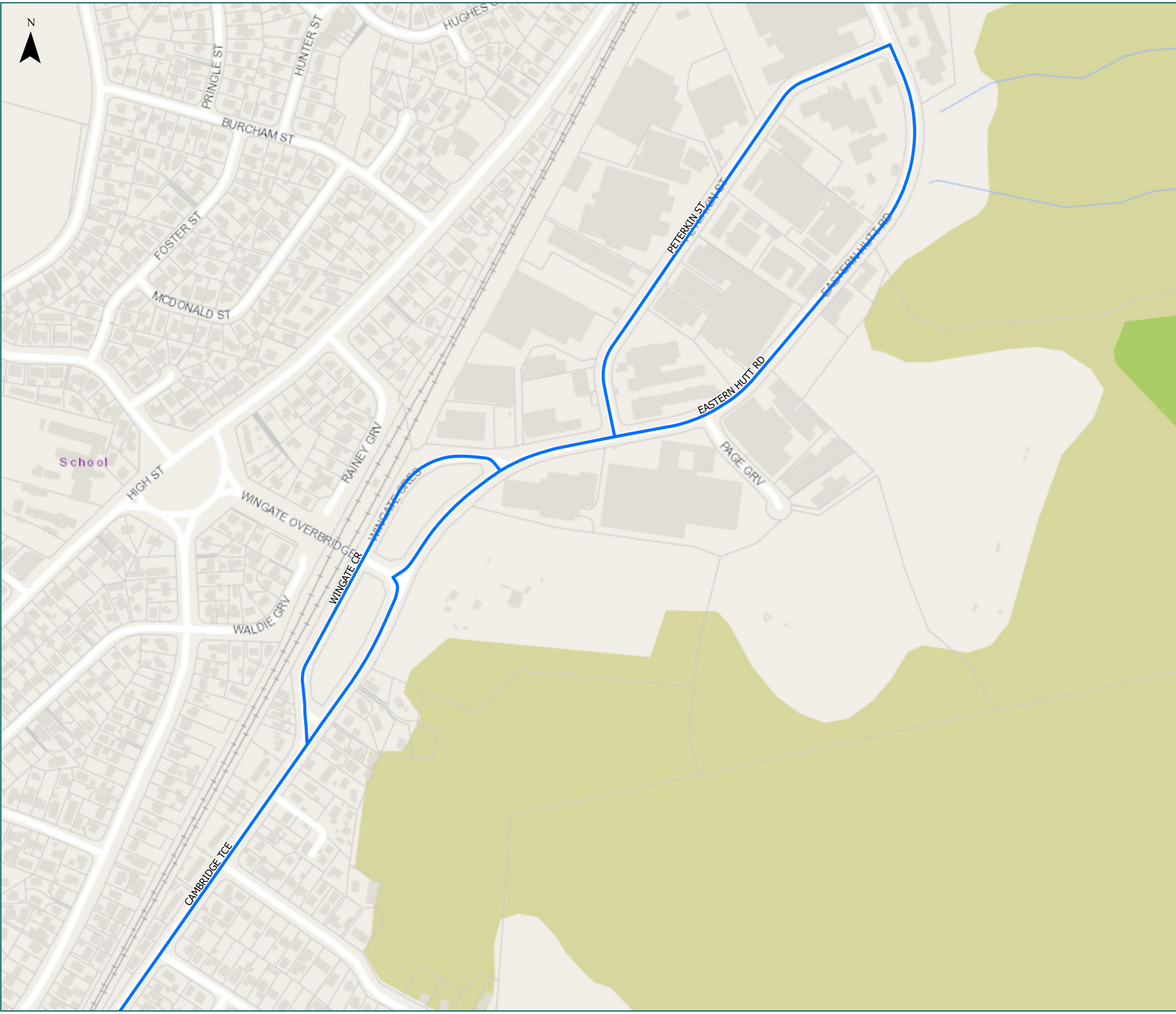
Taitā

## Legend

- Local Road
- Territorial Authority
- Boundary

Page 8 of 9

| Road/Street Name | Extent of Road/Street             |
|------------------|-----------------------------------|
| CAMBRIDGE TCE    | Full length                       |
| EASTERN HUTT RD  | from Cambridge Tce to Peterkin St |
| PETERKIN ST      | Full length                       |
| WINGATE CR       | Full length                       |



\* For the list of roads please refer to the index table in the end of the document.





# RCA Pre-approved HPMV Routes

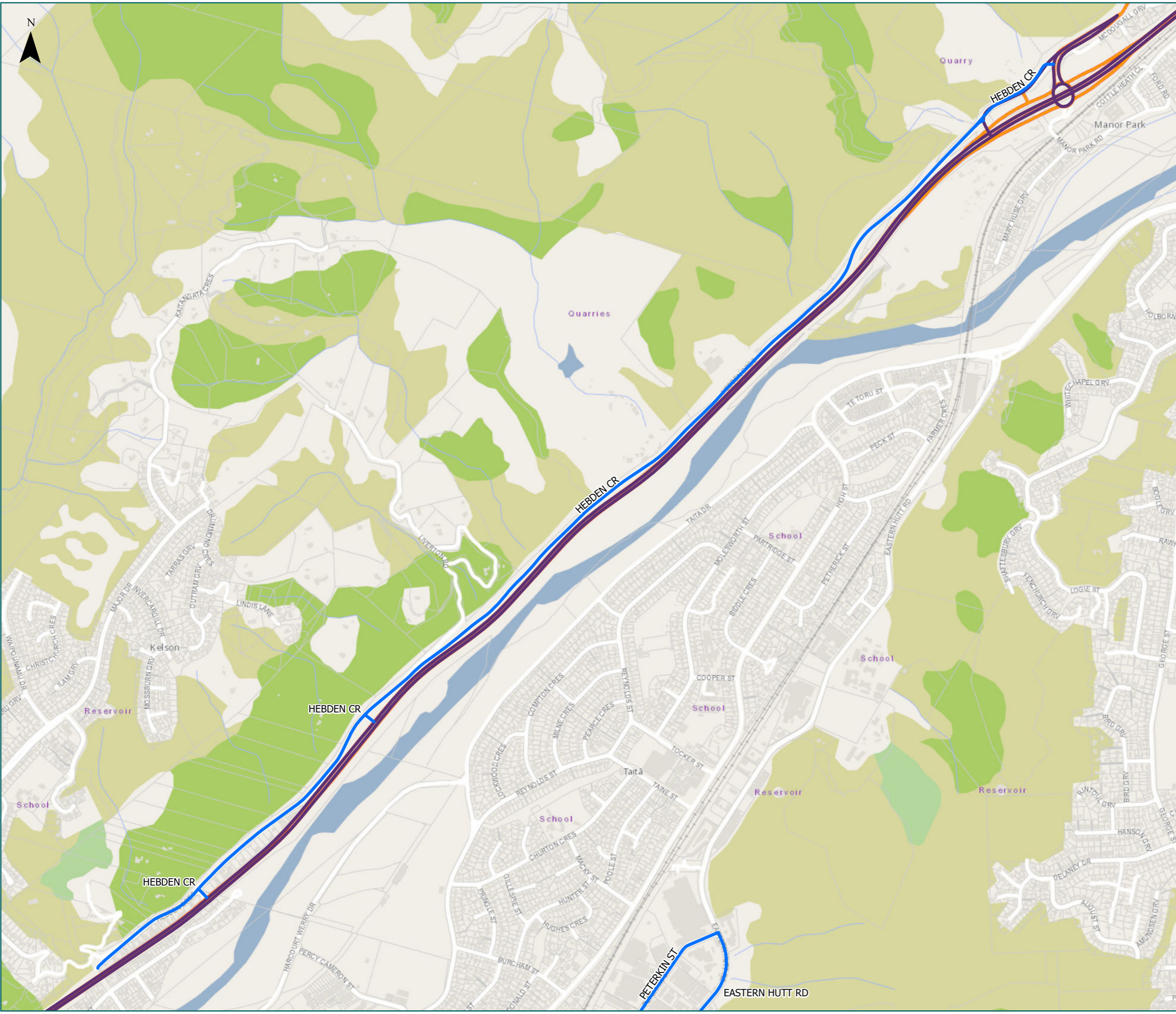
Hutt City  
Kelson & Manor Park

## Legend

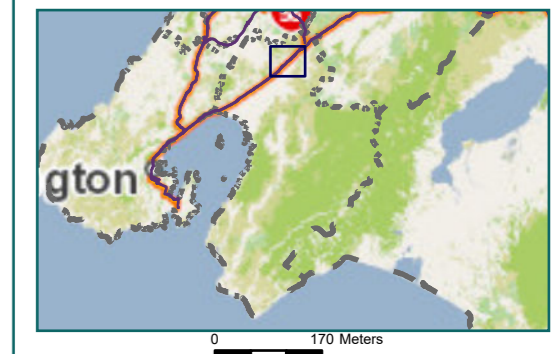
- Local Road
- State Highway
- Territorial Authority
- Boundary

Page 9 of 9

| Road/Street Name | Extent of Road/Street             |
|------------------|-----------------------------------|
| EASTERN HUTT RD  | from Cambridge Tce to Peterkin St |
| PETERKIN ST      | Full length                       |
| HEBDEN CR        | Full length                       |



\* For the list of roads please refer to the index table in the end of the document.





# Hutt City Map Index Page

| Route Name   | Page |
|--|------|
| BOUVERIE ST (Full length)                                | 1    |
| HUTT ROAD (PETONE) from SH2 to Udy St                    | 1    |
| KOROKORO ROAD (Full length)                              | 1    |
| PITO-ONE ROAD (Full length)                              | 1    |
| THE ESPLANADE (Full length)                              | 1    |
| UDY ST (Full length)                                     | 1    |
| HAUTONGA ST (Full length)                                | 2    |
| KIRKCALDY ST from Waione St to Marine Parade (South end) | 2    |
| MARINE PDE PETONE (Full length)                          | 2    |
| WAIONE ST (Full length)                                  | 2    |
| BELL RD (Full length)                                    | 3    |
| GOUGH ST (Full length)                                   | 3    |
| GRACEFIELD RD (Full length)                              | 3    |
| HUTT PARK RD (Full length)                               | 3    |
| PARKSIDE RD (Full length)                                | 3    |
| PORT RD (Full length)                                    | 3    |
| RANDWICK RD (Full length)                                | 3    |
| SEAVIEW RD (Full length)                                 | 3    |
| WATERMAN ST (Full length)                                | 3    |
| BARNES ST (Full length)                                  | 4    |
| MARCHBANKS ST (Full length)                              | 4    |
| MEACHEN ST (Full length)                                 | 4    |
| TOOP ST (Full length)                                    | 4    |
| WAREHAM PLACE (Full length)                              | 4    |
| CAMBRIDGE TCE (Full length)                              | 5    |
| WHITES LINE EAST (Full length)                           | 5    |
| CLENDON ST (Full length)                                 | 7    |
| DAYSH ST (Full length)                                   | 7    |
| FAIRWAY DR (Full length)                                 | 7    |
| NAENAE RD from Cambridge Tce to Daysh St                 | 7    |
| EASTERN HUTT RD from Cambridge Tce to Peterkin St        | 8    |
| PETERKIN ST (Full length)                                | 8    |



| Route Name              | Page |
|-------------------------|------|
| WINGATE CR (Full lenth) | 8    |
| HEBDEN CR (Full lenth)  | 9    |