

RCA Pre-approved HPMV Routes

Ashburton District

Overview

- Legend**
- Bridges Not Permitted To Pass
 - High productivity motor vehicles (HPMV) Routes
 - Local Road
 - Full High Productivity Motor Vehicle Routes (SH)
 - State Highway
 - Territorial Authority Boundary



0 5 km

RCA Pre-approved HPMV Routes

Ashburton District

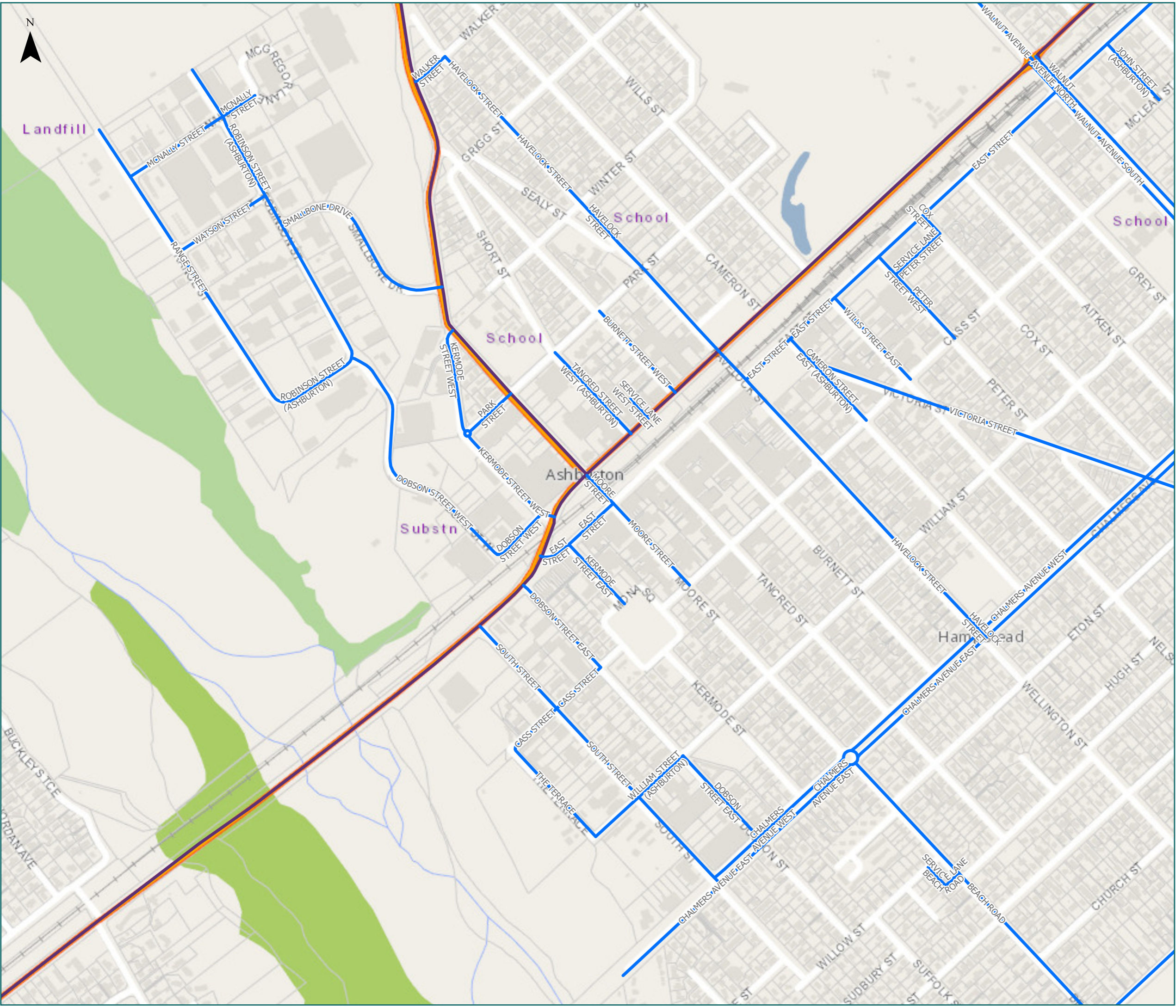
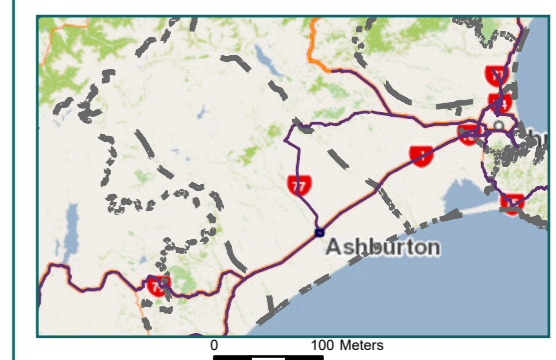
Ashburton Centre

Legend

- Local Road
- State Highway
- Territorial Authority
- Boundary

Road/Street Name	Extent of Road/Street
BEACH ROAD	Full Length
BURNETT STREET WEST	Full Length
CAMERON STREET EAST (ASHBURTON)	Full Length
CASS STREET	Full Length
CHALMERS AVENUE EAST	Full Length
CHALMERS AVENUE ROTARY SOUTH	Full Length
CHALMERS AVENUE WEST	Full Length
COX STREET	Full Length
DOBSON STREET EAST	Full Length
DOBSON STREET WEST	Full Length
EAST STREET	Full Length
HAVELOCK STREET	Full Length
JOHN STREET (ASHBURTON)	Full Length
KERMODE STREET EAST	Full Length
KERMODE STREET WEST	Full Length
KERMODE STREET WEST ROTARY	Full Length
MCNALLY STREET	Full Length
MOORE STREET	Full Length
PARK STREET	Full Length
PETER STREET WEST	Full Length
RANGE STREET	Full Length
ROBINSON STREET (ASHBURTON)	Full Length
SERVICE LANE BEACH ROAD	Full Length
SERVICE LANE PETER STREET	Full Length
SERVICE LANE WEST STREET	Full Length
SMALLBONE DRIVE	Full Length
SOUTH STREET	Full Length
TANCRED STREET WEST (ASHBURTON)	Full Length
THE TERRACE	Full Length
TREVORS ROAD (ASHBURTON)	Full Length
VICTORIA STREET	Full Length
WAKANUI ROAD	Full Length
WALKER STREET	Full Length
WALNUT AVENUE	Full Length
WALNUT AVENUE NORTH	Full Length
WALNUT AVENUE SOUTH	Full Length
WATSON STREET	Full Length
WILLIAM STREET (ASHBURTON)	Full Length
WILLS STREET EAST	Full Length

* For the list of roads please refer to the index table in the end of the document.



RCA Pre-approved HPMV Routes

Ashburton District

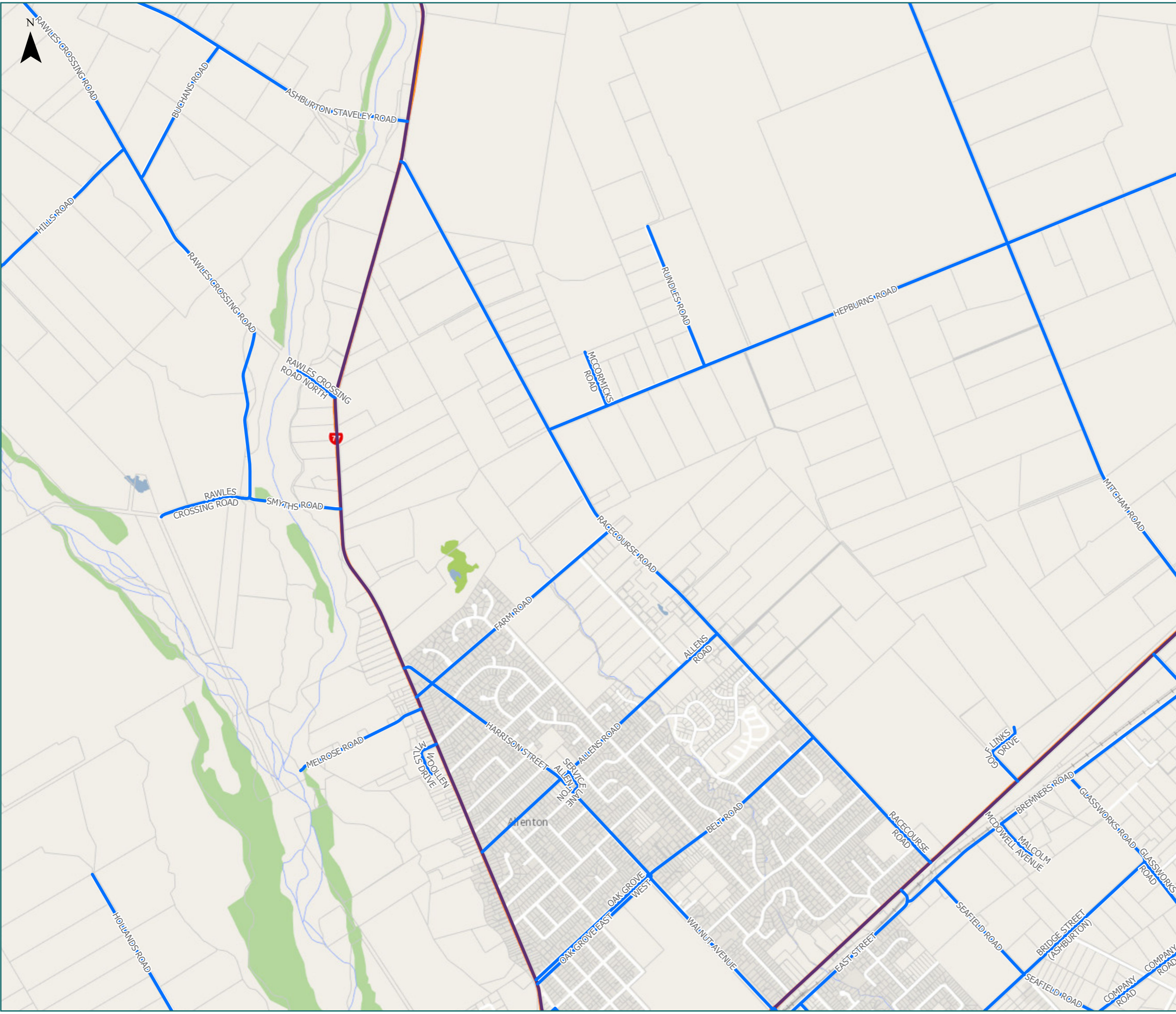
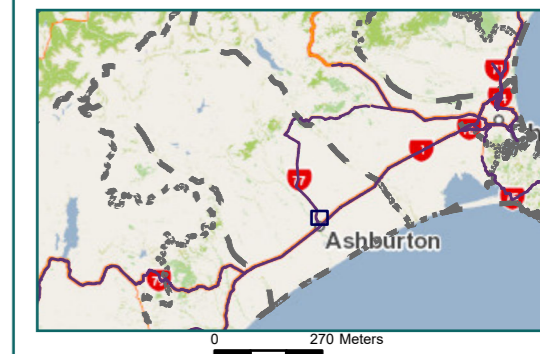
Lagmhor

Legend

- Local Road
- State Highway
- Territorial Authority
- Boundary

Road/Street Name	Extent of Road/Street
ALLENS ROAD	Full Length
ASHBURTON STAVELEY ROAD	DO NOT CROSS Rangitata Diversion Race (RDR)
BELT ROAD	Full Length
BREMNERS ROAD	Full Length
BRIDGE STREET (ASHBURTON)	Full Length
BUCHANS ROAD	Full Length
COMPANY ROAD	Full Length
EAST STREET	Full Length
FARM ROAD	Full Length
GLASSWORKS ROAD	Full Length
GOLF LINKS DRIVE	Full Length
HARRISON STREET	Full Length
HARRISON STREET ROTARY	Full Length
HAVELOCK STREET	Full Length
HEPBURNS ROAD	Full Length
HILLS ROAD	Full Length
HILLS ROAD WEST	Full Length
HOLLANDS ROAD	Full Length
JOHN STREET (ASHBURTON)	Full Length
MALCOLM MCDOWELL AVENUE	Full Length
MCCORMICKS ROAD	Full Length
MELROSE ROAD	Full Length
MITCHAM ROAD	Full Length
NORTH PARK ROAD	Full Length
OAK GROVE EAST	Full Length
OAK GROVE WEST	Full Length
RACECOURSE ROAD	Full Length
RAWLES CROSSING ROAD	Full Length
RAWLES CROSSING ROAD NORTH	Full Length
RUNDLES ROAD	Full Length
SEAFIELD ROAD	Full Length
SERVICE LANE ALLENTON	Full Length
SMYTHS ROAD	Full Length
WALKER STREET	Full Length
WALNUT AVENUE	Full Length
WALNUT AVENUE NORTH	Full Length
WALNUT AVENUE SOUTH	Full Length
WOOLLEN MILLS DRIVE	Full Length

* For the list of roads please refer to the index table in the end of the document.



RCA Pre-approved HPMV Routes

Ashburton District Dromore

Legend

- Local Road
- State Highway
- - - Territorial Authority Boundary
- - - Boundary

Road/Street Name	Extent of Road/Street
ALBERT STREET	Full Length
ANSTISS STREET	Full Length
ASHFORD AVENUE	Full Length
BEACH ROAD EAST	Full Length
BEBBINGTONS ROAD	Full Length
BISSET STREET	Full Length
BREMNERS ROAD	Full Length
BRIDGE STREET (ASHBURTON)	Full Length
CHALMERS AVENUE EAST	Full Length
CHALMERS AVENUE ROTARY NORTH	Full Length
CHALMERS AVENUE WEST	Full Length
CHERTSEY ROAD	Full Length
CHRISTYS ROAD	Full Length
COCHRANES ROAD	Full Length
COMPANY ROAD	Full Length
COPLANDS ROAD	Full Length
CRUM STREET	Full Length
DROMORE HATFIELD ROAD	Full Length
DROMORE METHVEN ROAD	Full Length
DROMORE STATION ROAD	Full Length
EAST STREET	Full Length
FAIRFIELD ROAD	Full Length
FAIRFIELD ROAD WEST	Full Length
GLASSWORKS ROAD	Full Length
GOLF LINKS DRIVE	Full Length
HANRAHANS ROAD	Full Length
HEPBURNS ROAD	Full Length
HOATTENS ROAD	Full Length
JB CULLEN DRIVE	Full Length
JB CULLEN DRIVE ROTARY	Full Length
JOHN STREET (ASHBURTON)	Full Length
LE BRETONS ROAD	Full Length
LYNN STREET	Full Length
MALCOLM MCDOWELL AVENUE	Full Length
MILTON ROAD NORTH	Full Length
MILTON ROAD SOUTH	Full Length
MITCHAM ROAD	Full Length
MORRIS ROAD	Full Length
MURDOCHS ROAD	Full Length
NORTH PARK ROAD	Full Length

* For the list of roads please refer to the index table in the end of the document.



RCA Pre-approved HPMV Routes

Ashburton District Wakanui

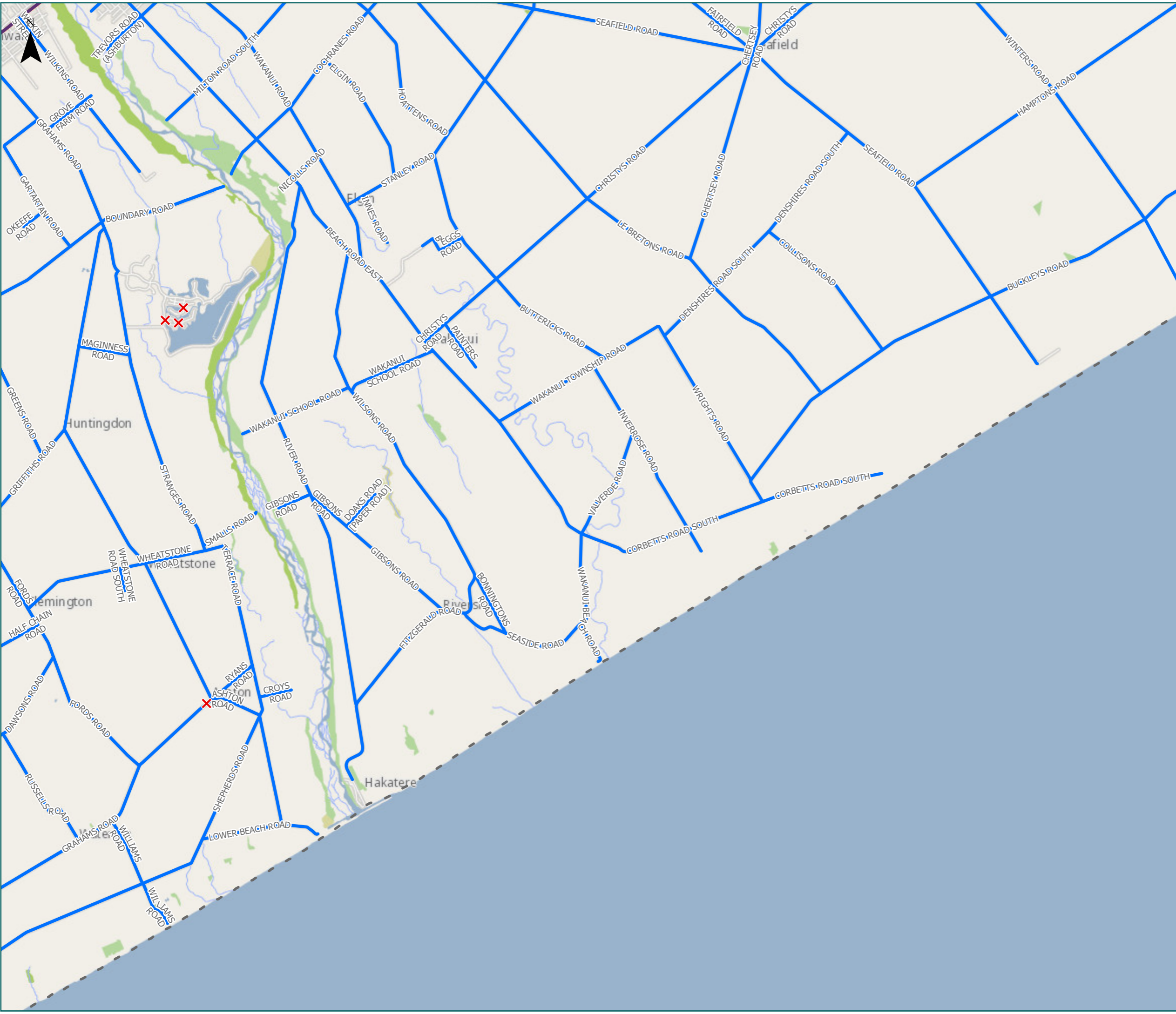
Legend

- ✗ Bridges Not Permitted To Pass
- Local Road
- State Highway
- Territorial Authority
- Boundary

Page 4 of 18

Road/Street Name	Extent of Road/Street
ASHTON ROAD	Full Length
BEACH ROAD	Full Length
BEACH ROAD EAST	Full Length
BEGGS ROAD	Full Length
BONNINGTONS ROAD	Full Length
BOUNDARY ROAD	Full Length
BUCKLEYS ROAD	Full Length
BUTTERICKS ROAD	Full Length
CHALMERS AVENUE EAST	Full Length
CHERTSEY ROAD	Full Length
CHRISTYS ROAD	Full Length
COCHRANES ROAD	Full Length
COLLISON'S ROAD	Full Length
CORBETTS ROAD SOUTH	Full Length
CROYS ROAD	Full Length
DAWSONS ROAD	Full Length
DENSHIRES ROAD SOUTH	Full Length
DOAKS ROAD [PAPER ROAD]	Full Length
ELGIN ROAD	Full Length
FAIRFIELD ROAD	Full Length
FITZGERALD ROAD	Full Length
FORDS ROAD	Full Length
GARTARTAN ROAD	Full Length
GIBSONS ROAD	Full Length
GRAHAMS ROAD	Full Length
GREENS ROAD	Full Length
GRIFFITHS ROAD	Full Length
GROVE FARM ROAD	Full Length
HALF CHAIN ROAD	Full Length
HAMPTONS ROAD	Full Length
HOATTENS ROAD	Full Length
INNES ROAD	Full Length
INVERROSE ROAD	Full Length
LE BRETONS ROAD	Full Length
LOWER BEACH ROAD	Full Length
MAGINNESS ROAD	Full Length
MILTON ROAD SOUTH	Full Length
NICOLLS ROAD	Full Length
OKEEFE ROAD	Full Length
PAINTERS ROAD	Full Length
RIVER ROAD	Full Length

* For the list of roads please refer to the index table in the end of the document.



RCA Pre-approved HPMV Routes

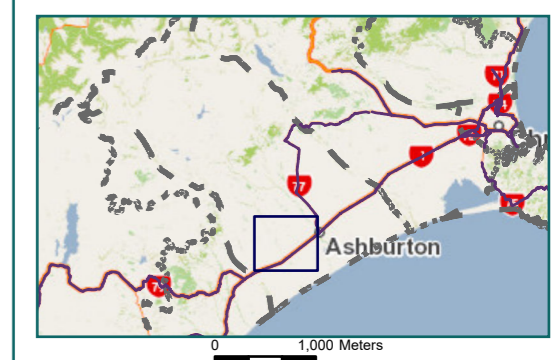
Ashburton District Maronan

Legend

- Local Road
- State Highway
- Territorial Authority Boundary

Road/Street Name	Extent of Road/Street
ANNETTS ROAD	Full Length
ASHBURTON STAVELEY ROAD	DO NOT CROSS Rangitata Diversion Race (RDR)
BARFORD ROAD	Full Length
BARNSWOOD ROAD	Full Length
BELLS ROAD	Full Length
BOUNDARY ROAD	Full Length
BRYANT STREET	Full Length
BUCHANS ROAD	Full Length
CHATMOS ROAD	Full Length
CHISNALLS ROAD	Full Length
COLDSTREAM ROAD	Full Length
CRACROFT MARONAN ROAD	Full Length
CRACROFT STREET	Full Length
DAWSONS ROAD	Full Length
DELAMINE STREET	Full Length
DICKSONS ROAD	Full Length
FARM ROAD	Full Length
FERRIMANS ROAD	Full Length
FIELDS ROAD	Full Length
FORDS ROAD	Full Length
FOUNTAINES ROAD	Full Length
FRAMPTONS ROAD	Full Length
FRASERS ROAD	Full Length
FRISBYS ROAD	Full Length
GARTARTAN ROAD	Full Length
GIDDINGS ROAD	Full Length
GILLS ROAD	Full Length
GRAHAM STREET	Full Length
GRAHAMS ROAD	Full Length
GREENS ROAD	Full Length
GRIFFITHS ROAD	Full Length
GROVE FARM ROAD	Full Length
HACKTHORNE ROAD	Full Length
HALF CHAIN ROAD	Full Length
HARRISON STREET	Full Length
HASSAL STREET	Full Length
HENDERSONS ROAD	Full Length
HILLS ROAD	Full Length
HILLS ROAD WEST	Full Length
HINDS ARUNDEL ROAD	Full Length

* For the list of roads please refer to the index table in the end of the document.



RCA Pre-approved HPMV Routes

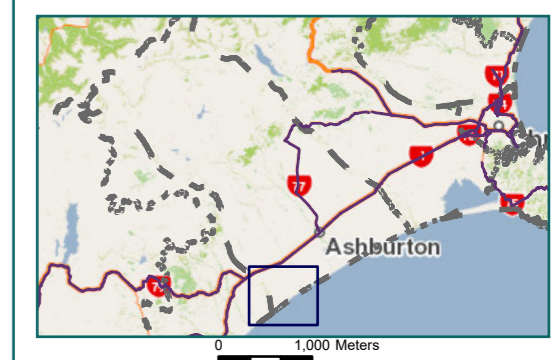
Ashburton District Lowcliffe

Legend

- ✗ Bridges Not Permitted To Pass
- Local Road
- State Highway
- Territorial Authority
- - - Boundary

Road/Street Name	Extent of Road/Street
ADAM JACKSON ROAD	Full Length
ADAMS ROAD	Full Length
BELLS ROAD	Full Length
BOLTONS ROAD	Full Length
BOUNDARY ROAD	Full Length
BROGDENS ROAD	Full Length
BRYANTS ROAD	Full Length
COLDSTREAM ROAD	Full Length
COLDSTREAM SETTLEMENT ROAD	Full Length
CROWS ROAD	Full Length
DAVISON'S ROAD	Full Length
DAWSONS ROAD	Full Length
DOBSONS ROAD	Full Length
DOWDINGS ROAD	Full Length
DRAIN ROAD	Full Length
EALING MONTALTO ROAD	Full Length
EALING ROAD	Full Length
EMERSONS ROAD	Full Length
FRISBYS ROAD	Full Length
GIDDINGS ROAD	Full Length
GRAHAMS ROAD	Full Length
HALF CHAIN ROAD	Full Length
HINDS RIVER ROAD	Full Length
ISLEWORTH ROAD	Full Length
ISLEWORTH SETTLEMENT ROAD	Full Length
JUNCTION ROAD	Full Length
LLOYDS ROAD	Full Length
LONGBEACH ROAD	Full Length
LOWER BEACH ROAD	Full Length
MARONAN EALING ROAD	Full Length
MCCONNELLS ROAD SOUTH	Full Length
NEW PARK ROAD	Full Length
OCEAN VIEW ROAD	DO NOT CROSS McKeages Drain
OLD MAIN SOUTH ROAD	Full Length
POPLAR ROAD	Full Length
PYES ROAD	Full Length
READS ROAD	Full Length
RUSSELLS ROAD	Full Length
STEVENS ROAD	Full Length
STORRIERS ROAD	Full Length

* For the list of roads please refer to the index table in the end of the document.



RCA Pre-approved HPMV Routes

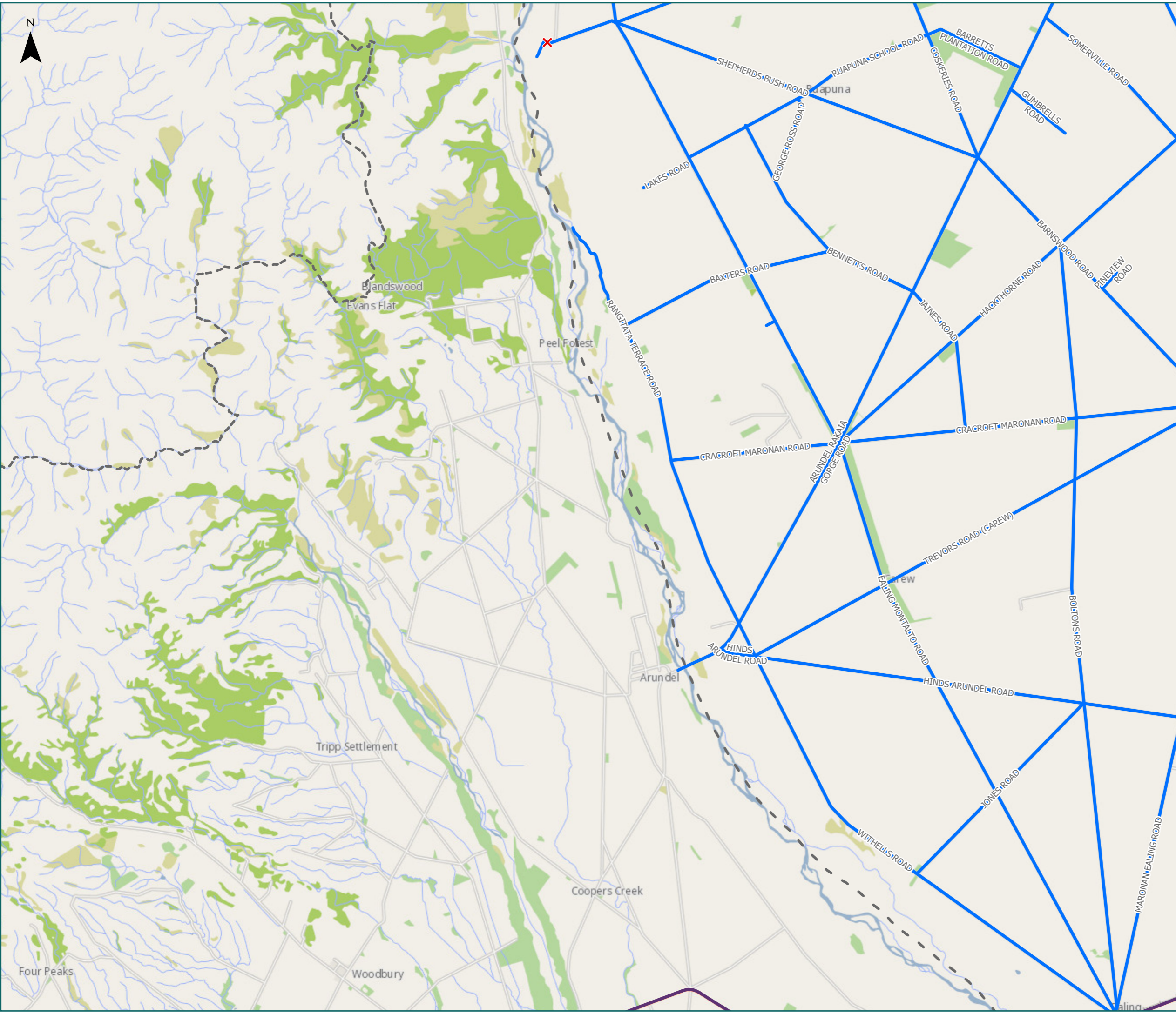
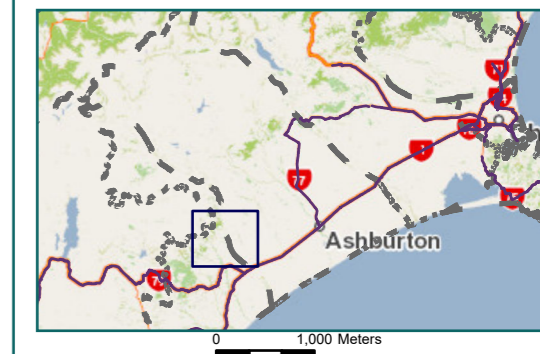
Ashburton District Ealing

Legend

- ✗ Bridges Not Permitted To Pass
- Local Road
- State Highway
- - - Territorial Authority Boundary
- - - Boundary

Road/Street Name	Extent of Road/Street
ARUNDEL RAKAIA GORGE ROAD	Full Length
BARNSWOOD ROAD	Full Length
BARRETT'S PLANTATION ROAD	Full Length
BAXTERS ROAD	Full Length
BENNETT'S ROAD	Full Length
BOLTONS ROAD	Full Length
COSKERIES ROAD	DO NOT CROSS Rangitata Diversion Race (RDR)
CRACROFT MARONAN ROAD	Full Length
EALING MONTALTO ROAD	Full Length
GEORGE ROSS ROAD	Full Length
GUMBRELLS ROAD	Full Length
HACKTHORNE ROAD	Full Length
HINDS ARUNDEL ROAD	Full Length
JAINES ROAD	Full Length
JONES ROAD	Full Length
LAKES ROAD	Full Length
LANE TASKERS ROAD	Full Length
LISMORE MAYFIELD ROAD	Full Length
MARONAN EALING ROAD	Full Length
MONTALTO ROAD	DO NOT CROSS Rangitata Diversion Race (RDR)
MOORHOUSE ROAD	Full Length
PINEVIEW ROAD	Full Length
RANGITATA TERRACE ROAD	Full Length
RUAPUNA SCHOOL ROAD	Full Length
SHEPHERD'S BUSH ROAD	DO NOT CROSS Mayfield Hinds Bridge #3
SOMERVILLE ROAD	Full Length
STONYLEA ROAD	Full Length
TREVORS ROAD (CAREW)	Full Length
WITHELLS ROAD	Full Length

* For the list of roads please refer to the index table in the end of the document.



RCA Pre-approved HPMV Routes

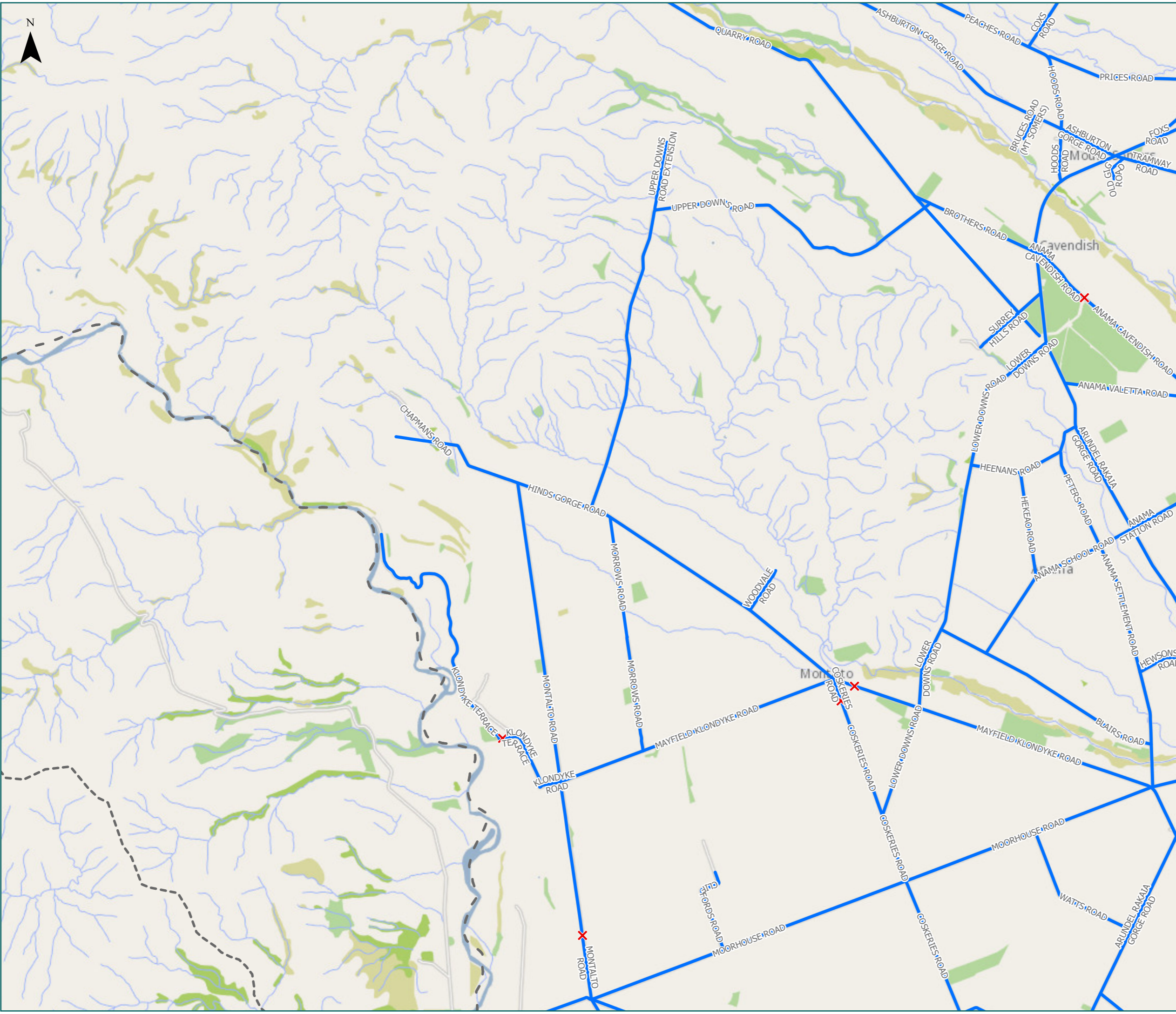
Ashburton District

Cavendish

- Legend**
- ✗ Bridges Not Permitted To Pass
 - Territorial Authority
 - Boundary
 - Local Road

Road/Street Name	Extent of Road/Street
ANAMA CAVENDISH ROAD	DO NOT CROSS Rangitata Diversion Race (RDR)
ANAMA SCHOOL ROAD	Full Length
ANAMA SETTLEMENT ROAD	Full Length
ANAMA STATION ROAD	Full Length
ANAMA VALETTA ROAD	Anama Valetta Road is unformed from Anama Cavendish Road to Arundel Rakaia Gorge Road
ARUNDEL RAKAIA GORGE ROAD	Full Length
ASHBURTON GORGE ROAD	Full Length
BARRETT'S PLANTATION ROAD	Full Length
BLAIRS ROAD	Full Length
BROTHERS ROAD	Full Length
BRUCES ROAD (MT SOMERS)	Full Length
CHAPMANS ROAD	Full Length
CLIFFORDS ROAD	Full Length
COSKERIES ROAD	DO NOT CROSS Rangitata Diversion Race (RDR)
COXS ROAD	Full Length
EALING MONTALTO ROAD	Full Length
FOXS ROAD	DO NOT CROSS Rangitata Diversion Race (RDR)
HEENANS ROAD	Full Length
HEKEAO ROAD	Full Length
HEWSONS ROAD	Full Length
HINDS GORGE ROAD	Full Length
HOODS ROAD	Full Length
KLONDYKE ROAD	Full Length
KLONDYKE TERRACE	DO NOT CROSS Rangitata Diversion Race (RDR)
LISMORE MAYFIELD ROAD	Full Length
LOWER DOWNS ROAD	Full Length
MAYFIELD KLONDYKE ROAD	DO NOT CROSS Rangitata Diversion Race (RDR)
MCKENZIES ROAD	Full Length
MONTALTO ROAD	DO NOT CROSS Rangitata Diversion Race (RDR)
MOORHOUSE ROAD	Full Length
MORROWS ROAD	Full Length
OLD GIG ROAD	Full Length
PEACHES ROAD	Full Length
PETERS ROAD	Full Length
PRICES ROAD	Full Length

* For the list of roads please refer to the index table in the end of the document.



RCA Pre-approved HPMV Routes

Ashburton District

Ashburton Forks

Legend

- ✗ Bridges Not Permitted To Pass
- Local Road
- State Highway
- Territorial Authority
- Boundary

Road/Street Name	Extent of Road/Street
AIKENS ROAD	Full Length
ALLAN SMITHS ROAD	Full Length
ANAMA CAVENDISH ROAD	DO NOT CROSS Rangitata Diversion Race (RDR)
ANAMA SETTLEMENT ROAD	Full Length
ANAMA STATION ROAD	Full Length
ANAMA VALETTA ROAD	Anama Valetta Road is unformed from Anama Cavendish Road to Arundel Rakaia Gorge Road
ARUNDEL RAKAIA GORGE ROAD	Full Length
ASHBURTON RIVER ROAD	DO NOT CROSS Rangitata Diversion Race (RDR)
ASHBURTON STAVELEY ROAD	DO NOT CROSS Rangitata Diversion Race (RDR)
BARFORD ROAD	Full Length
BLACKS ROAD	Full Length
BLAIRS ROAD	Full Length
BLANDS ROAD	Full Length
BRAEMAR LAURISTON ROAD	Full Length
BRAEMAR ROAD	Full Length
BULLS ROAD	Full Length
DIP ROAD	DO NOT CROSS Rangitata Diversion Race (RDR)
DRISCOLLS ROAD	Full Length
DROMORE METHVEN ROAD	Full Length
FECHNEYS ROAD (NORTH LEG)	Full Length
FECHNEYS ROAD (SOUTH LEG)	Full Length
FLEMINGS ROAD	Full Length
FORKS ROAD	DO NOT CROSS Rangitata Diversion Race (RDR)
FOXES ROAD	DO NOT CROSS Rangitata Diversion Race (RDR)
FRASERS ROAD	Full Length
GATES ROAD	Full Length
GOUGHS CROSSING ROAD	Full Length
HACKTHORNE ROAD	Full Length
HEWSONS ROAD	Full Length
JACKSONS ROAD	Full Length
LAMBIES ROAD (STAVELEY)	DO NOT CROSS Rangitata Diversion Race (RDR)
LANGDONS ROAD	Full Length
LISMORE MAYFIELD ROAD	Full Length
LOCHHEADS ROAD	Full Length

* For the list of roads please refer to the index table in the end of the document.



RCA Pre-approved HPMV Routes

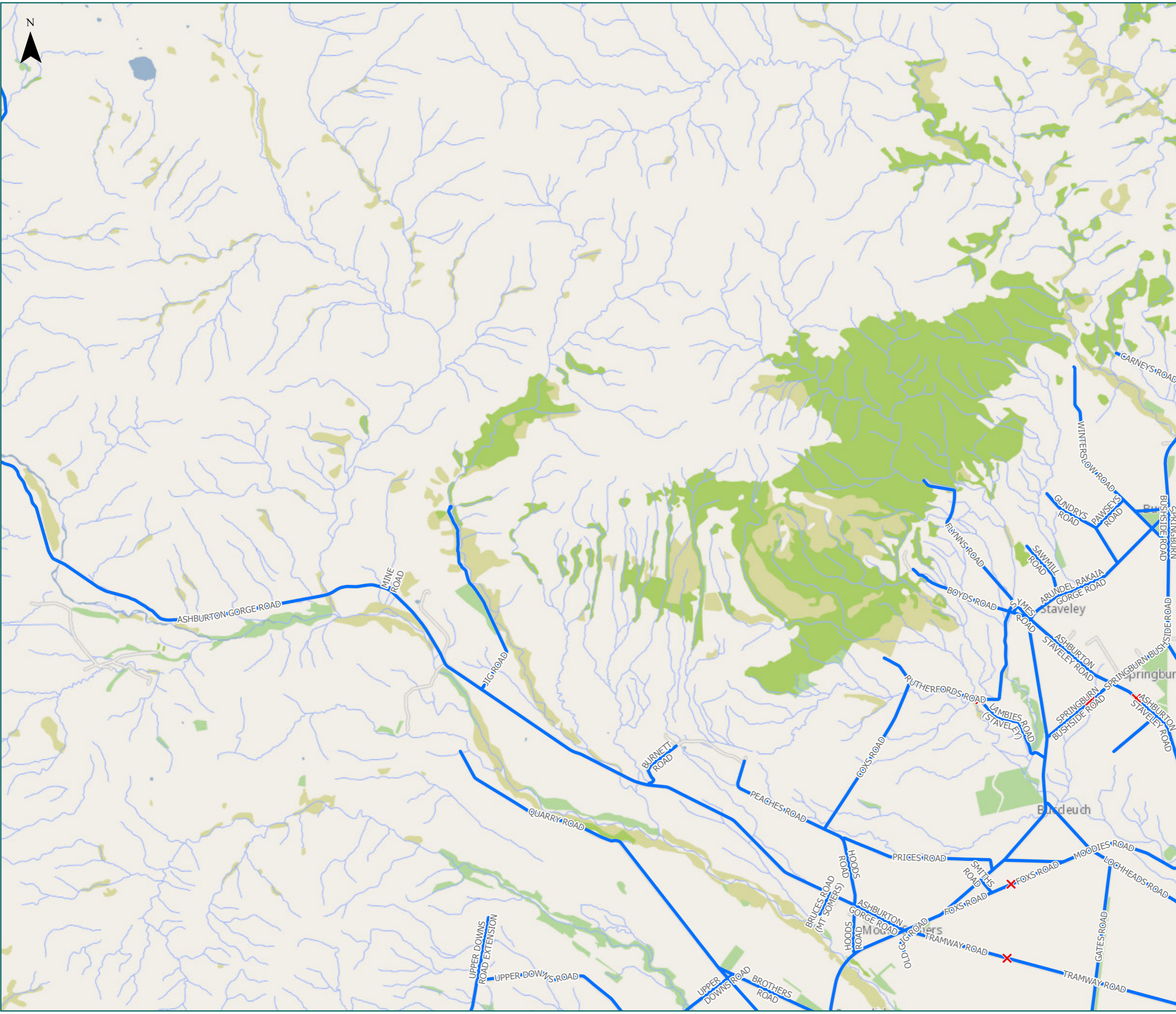
Ashburton District Mount Somers

Legend

- ✗ Bridges Not Permitted To Pass
- Local Road
- Territorial Authority Boundary

Road/Street Name	Extent of Road/Street
ARUNDEL RAKAIA GORGE ROAD	Full Length
ASHBURTON GORGE ROAD	Full Length
ASHBURTON STAVELEY ROAD	DO NOT CROSS Rangitata Diversion Race (RDR)
BOYDS ROAD	Full Length
BROTHERS ROAD	Full Length
BRUCES ROAD (MT SOMERS)	Full Length
BURGESS ROAD	Full Length
BURNETT ROAD	Full Length
CARNEYS ROAD	Full Length
COXS ROAD	Full Length
FLYNNS ROAD	Full Length
FOXES ROAD	DO NOT CROSS Rangitata Diversion Race (RDR)
GATES ROAD	Full Length
GUNDRYS ROAD	Full Length
HAKATERE HERON ROAD	DO NOT CROSS Lake Stream
HOODS ROAD	Full Length
JIG ROAD	Full Length
LAMBIES ROAD (STAVELEY)	DO NOT CROSS Rangitata Diversion Race (RDR)
LOCHHEADS ROAD	Full Length
MAYORS ROAD	Full Length
MINE ROAD	Full Length
MOODIES ROAD	Full Length
OLD GIG ROAD	Full Length
PAWSEYS ROAD	Full Length
PEACHES ROAD	Full Length
PRICES ROAD	Full Length
QUARRY ROAD	Full Length
RUTHERFORDS ROAD	Full Length
SAWMILL ROAD	Full Length
SMITHS ROAD	Full Length
SPRINGBURN BUSHSIDE ROAD	DO NOT CROSS Rangitata Diversion Race (RDR)
STACKHOUSE ROAD	Full Length
SYMES ROAD	Full Length
TRAMWAY ROAD	DO NOT CROSS Rangitata Diversion Race (RDR)
UPPER DOWNS ROAD	Full Length
UPPER DOWNS ROAD EXTENSION	Full Length
WINTERSLOW ROAD	Full Length
WITHERS FARM EXTENSION	Full Length

* For the list of roads please refer to the index table in the end of the document.



RCA Pre-approved HPMV Routes

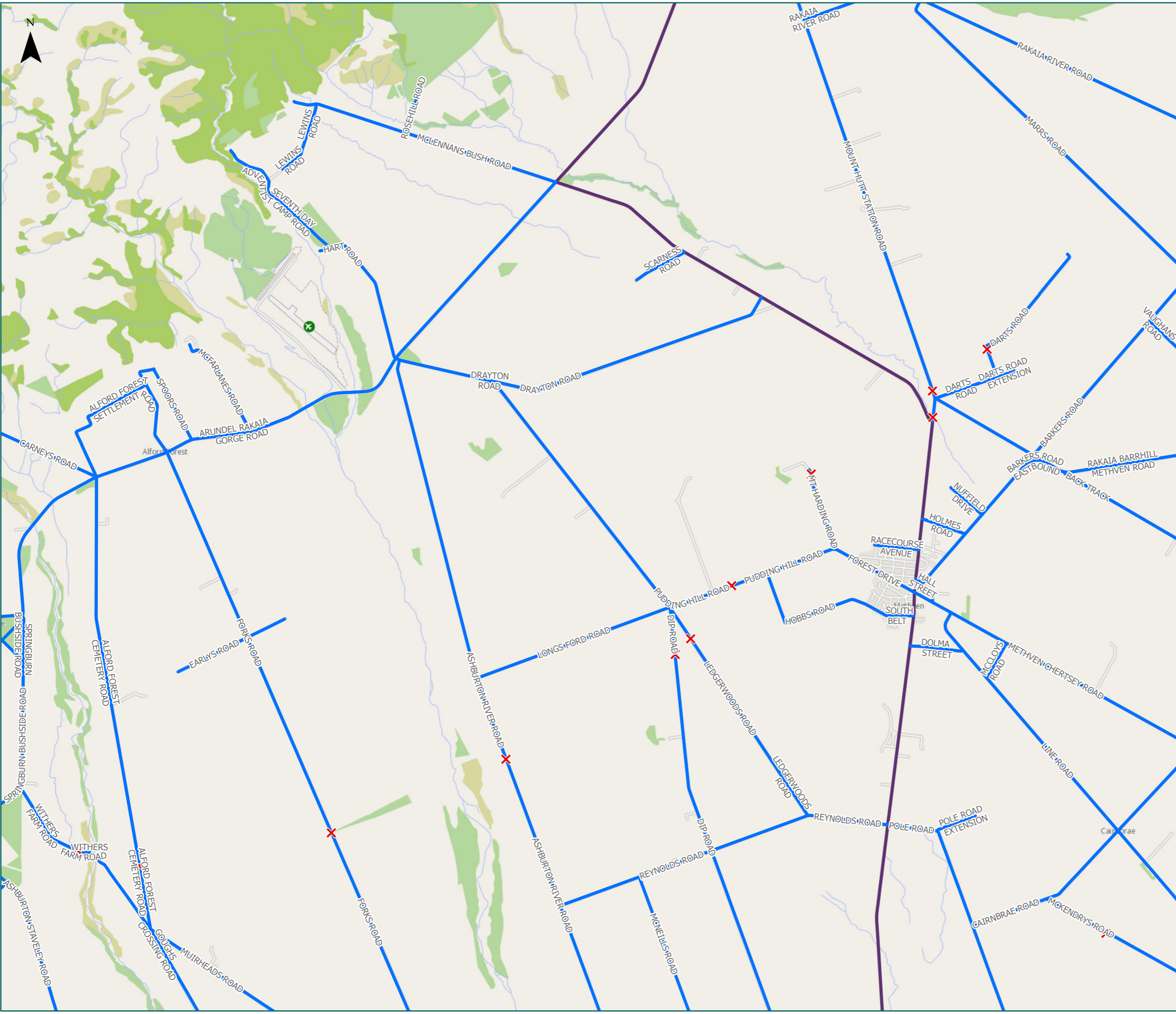
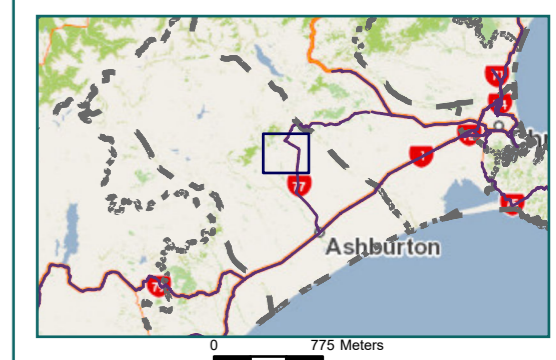
Ashburton District Methven

Legend

- ✗ Bridges Not Permitted To Pass
- Local Road
- State Highway
- Territorial Authority
- Boundary

Road/Street Name	Extent of Road/Street
ALFORD FOREST CEMETERY ROAD	DO NOT CROSS Rangitata Diversion Race (RDR)
ALFORD FOREST SETTLEMENT ROAD	Full Length
ALFORD FOREST SETTLEMENT ROAD EXT.	Full Length
ARUNDEL RAKAIA GORGE ROAD	Full Length
ASHBURTON RIVER ROAD	DO NOT CROSS Rangitata Diversion Race (RDR)
ASHBURTON STAVELEY ROAD	DO NOT CROSS Rangitata Diversion Race (RDR)
BACK TRACK	Full Length
BARKERS ROAD	DO NOT CROSS Rangitata Diversion Race (RDR)
BARKERS ROAD EASTBOUND	Full Length
CAIRNBRAE ROAD	Full Length
CARNEYS ROAD	Full Length
DARTS ROAD	DO NOT CROSS Rangitata Diversion Race (RDR)
DARTS ROAD EXTENSION	Full Length
DIP ROAD	DO NOT CROSS Rangitata Diversion Race (RDR)
DOLMA STREET	Full Length
DRAYTON ROAD	Full Length
EARLYS ROAD	Full Length
FOREST DRIVE	Full Length
FORKS ROAD	DO NOT CROSS Rangitata Diversion Race (RDR)
GOUGHS CROSSING ROAD	Full Length
HALL STREET	Full Length
HAPPY VALLEY ROAD [PAPER ROAD]	Full Length
HART ROAD	Full Length
HOBBS ROAD	Full Length
HOLMES ROAD	Full Length
LEDGERWOODS ROAD	DO NOT CROSS Rangitata Diversion Race (RDR)
LEWINS ROAD	Full Length
LINE ROAD	Full Length
LONGS FORD ROAD	Full Length
MACKIE STREET (METHVEN)	Full Length
MARRS ROAD	Full Length
MAYORS ROAD	Full Length
MCCLOY'S ROAD	Full Length
MCFARLANES ROAD	Full Length

* For the list of roads please refer to the index table in the end of the document.



RCA Pre-approved HPMV Routes

Ashburton District

Barrhill

- Legend
- ✗ Bridges Not Permitted To Pass
 - Local Road
 - Territorial Authority
 - - - Boundary

Road/Street Name	Extent of Road/Street
ACCOMMODATION ROAD	Full Length
BACK TRACK	Full Length
BARKERS ROAD	DO NOT CROSS Rangitata Diversion Race (RDR)
BIRCH AVENUE	Full Length
CAIRNBRAE ROAD	Full Length
FARQUHARS ROAD	Full Length
FRANKS ROAD	Full Length
HAPPY VALLEY ROAD [PAPER ROAD]	Full Length
HIGHBANK CAIRNBRAE ROAD	Full Length
HIGHBANK SCHOOL ROAD	Full Length
HOLMESLEE ROAD	Full Length
IRWINS ROAD	Full Length
LAURISTON BARRHILL ROAD	Full Length
LIME AVENUE	Full Length
LINE ROAD	Full Length
LYNDHURST ROAD	Full Length
MACKIES ROAD	Full Length
MANGINS ROAD	Full Length
MARRS ROAD	Full Length
MASSEY ROAD	Full Length
MCKENDRYS ROAD	Full Length
METHVEN CHERTSEY ROAD	Full Length
MITCHAM ROAD	Full Length
OAK AVENUE	Full Length
O Briens Road	Full Length
ORRS ROAD	Full Length
PANNETTS ROAD	Full Length
POPLAR AVENUE [PAPER ROAD]	Full Length
RAKAIA BARRHILL METHVEN ROAD	Full Length
RAKAIA BARRHILL METHVEN ROAD EXT	Full Length
RAKAIA RIVER ROAD	DO NOT CROSS Rangitata Diversion Race (RDR)
ROKEBY SCHOOL ROAD	Full Length
SOMERTON ROAD	Full Length
SYCAMORE AVENUE	Full Length
URRALL ROAD	Full Length
VAUGHANS ROAD	Full Length
WOODS ROAD	Full Length

* For the list of roads please refer to the index table in the end of the document.



RCA Pre-approved HPMV Routes

Ashburton District Lauriston

Legend

- Local Road
- State Highway
- Territorial Authority
- Boundary

Road/Street Name	Extent of Road/Street
ASHBURTON STAVELEY ROAD	DO NOT CROSS Rangitata Diversion Race (RDR)
BEBBINGTONS ROAD	Full Length
BLACKS ROAD	Full Length
BRAEMAR LAURISTON ROAD	Full Length
BUCHANS ROAD	Full Length
COPLANDS ROAD	Full Length
DROMORE HATFIELD ROAD	Full Length
DROMORE METHVEN ROAD	Full Length
DROMORE STATION ROAD	Full Length
FARQUHARS ROAD	Full Length
FRANKS ROAD	Full Length
HANRAHANS ROAD	Full Length
HEPBURNS ROAD	Full Length
IRWINS ROAD	Full Length
JAMIESONS ROAD	Full Length
LAURISTON BARRHILL ROAD	Full Length
LETHAMS ROAD	Full Length
LINE ROAD	Full Length
MACKIES ROAD	Full Length
MITCHAM ROAD	Full Length
PANNETTS ROAD	Full Length
POLE ROAD	Full Length
RAWLES CROSSING ROAD	Full Length
ROBERTSONS ROAD	Full Length
ROKEBY SCHOOL ROAD	Full Length
ROONEYS ROAD	Full Length
SOMERTON ROAD	Full Length
STANLEY ROAD	Full Length
TAVENDALE ROAD	Full Length
TAVERNERS ROAD	Full Length
THOMPSONS TRACK	Full Length
URRALL ROAD	Full Length
WAKELINS ROAD	Full Length
WILKINSONS ROAD	Full Length
WINCHMORE DROMORE ROAD	Full Length
WINCHMORE LAURISTON ROAD	Full Length
WINCHMORE SCHOOL ROAD	Full Length

* For the list of roads please refer to the index table in the end of the document.



RCA Pre-approved HPMV Routes

Ashburton District

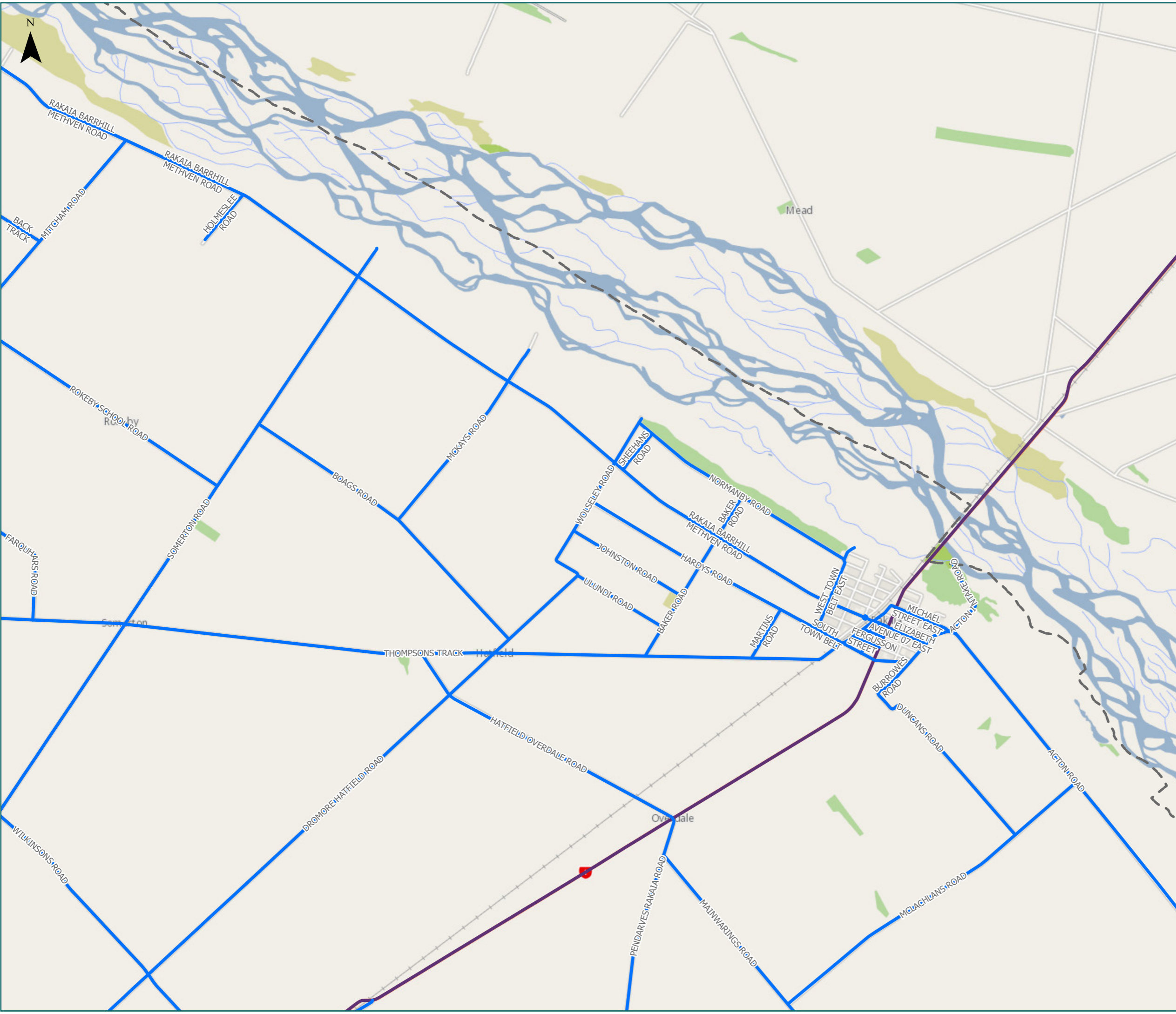
Rakaia

Legend

- Local Road
- State Highway
- - - Territorial Authority
- - - Boundary

Road/Street Name	Extent of Road/Street
ACTON INTAKE ROAD	Full Length
ACTON ROAD	Full Length
ACTON ROAD EXTENSION	Full Length
BACK TRACK	Full Length
BAKER ROAD	Full Length
BOAGS ROAD	Full Length
BOWEN STREET EAST	Full Length
BURROWES ROAD	Full Length
CHAPMAN STREET (RAKAIA)	Full Length
CHERTSEY LINE ROAD	Full Length
DROMORE HATFIELD ROAD	Full Length
DUNCANS ROAD	Full Length
ELIZABETH AVENUE 01 WEST	Full Length
ELIZABETH AVENUE 02 ROTARY WEST	Full Length
ELIZABETH AVENUE 03 RAILWAY	Full Length
ELIZABETH AVENUE 04 ROTARY EAST	Full Length
ELIZABETH AVENUE 05 NORTH	Full Length
ELIZABETH AVENUE 06 SOUTH	Full Length
ELIZABETH AVENUE 07 EAST	Full Length
FARQUHARS ROAD	Full Length
FERGUSSON STREET	Full Length
HARDYS ROAD	Full Length
HATFIELD OVERDALE ROAD	Full Length
HOLMESLEE ROAD	Full Length
JOHNSTON ROAD	Full Length
MAINWARINGS ROAD	Full Length
MARTINS ROAD	Full Length
MCKAYS ROAD	Full Length
MCLACHLANS ROAD	Full Length
MICHAEL STREET EAST	Full Length
MITCHAM ROAD	Full Length
NORMANBY ROAD	Full Length
PENDARVES RAKAIA ROAD	Full Length
RAILWAY TERRACE EAST	Full Length
RAKAIA BARRHILL METHVEN ROAD	Full Length
ROKEBY SCHOOL ROAD	Full Length
ROLLESTON STREET EAST	Full Length
SHEEHANS ROAD	Full Length
SOMERTON ROAD	Full Length

* For the list of roads please refer to the index table in the end of the document.



RCA Pre-approved HPMV Routes

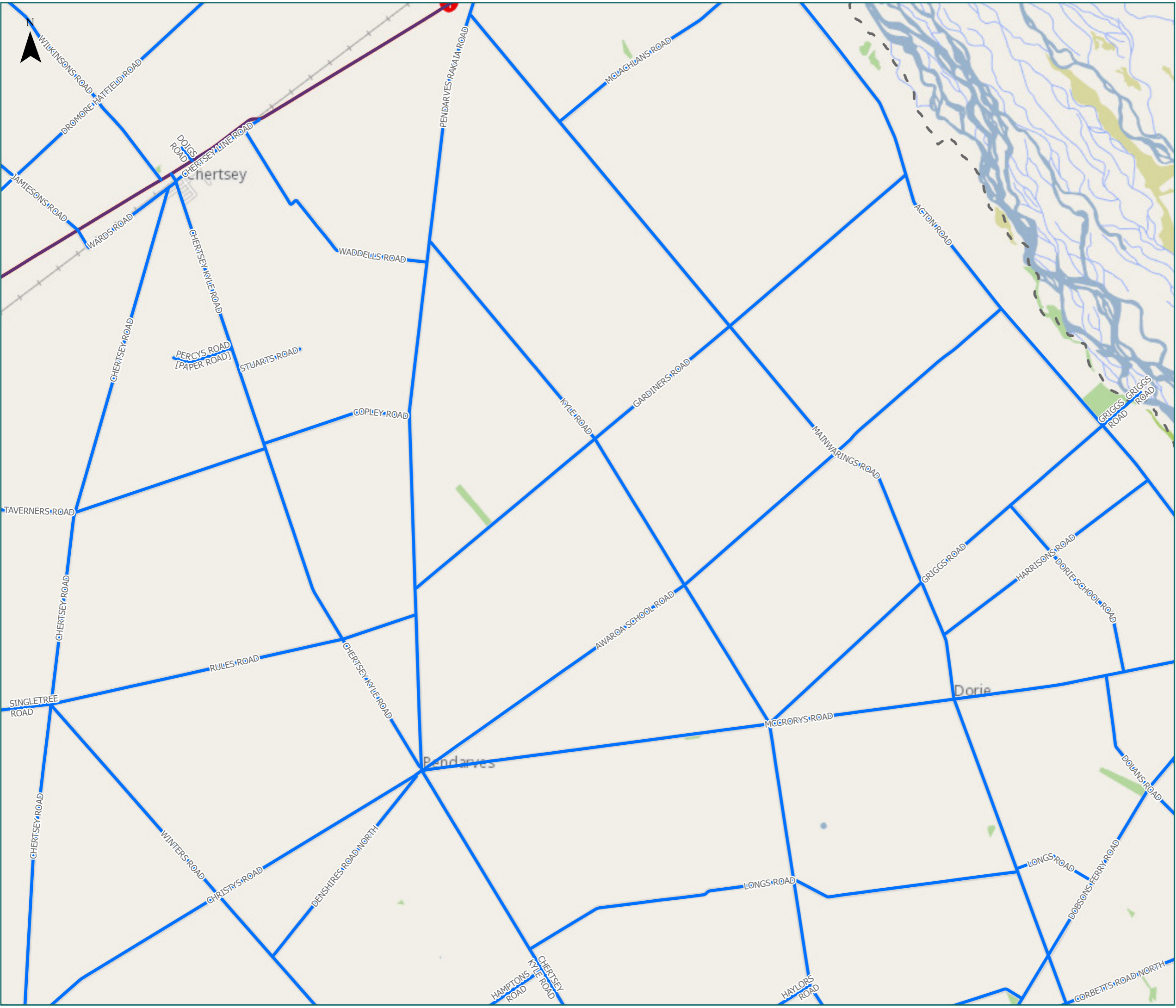
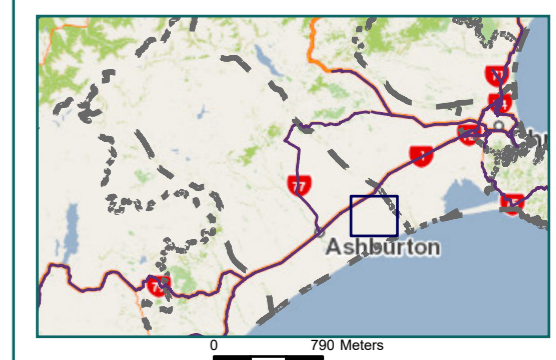
Ashburton District Pendarves

Legend

- Local Road
- State Highway
- - - Territorial Authority
- - - Boundary

Road/Street Name	Extent of Road/Street
ACTON ROAD	Full Length
AWAROA SCHOOL ROAD	Full Length
CARRUTHERS ROAD	Full Length
CHERTSEY KYLE ROAD	Full Length
CHERTSEY LINE ROAD	Full Length
CHERTSEY ROAD	Full Length
CHRISTYS ROAD	Full Length
COPLEY ROAD	Full Length
CORBETTS ROAD NORTH	Full Length
DENSHIRES ROAD NORTH	Full Length
DOBSONS FERRY ROAD	Full Length
DOIGS ROAD	Full Length
DOLANS ROAD	Full Length
DORIE SCHOOL ROAD	Full Length
DROMORE HATFIELD ROAD	Full Length
GARDINERS ROAD	Full Length
GRIGGS ROAD	Full Length
HAMPTONS ROAD	Full Length
HARRISONS ROAD	Full Length
HAYLORS ROAD	Full Length
JAMIESONS ROAD	Full Length
KYLE ROAD	Full Length
LAMBIES ROAD (PENDARVES)	Full Length
LONGS ROAD	Full Length
MAINWARINGS ROAD	Full Length
MCCRORYS ROAD	Full Length
MCLACHLANS ROAD	Full Length
PENDARVES RAKAIA ROAD	Full Length
PERCYS ROAD [PAPER ROAD]	Full Length
RULES ROAD	Full Length
SINGLETREE ROAD	Full Length
STUARTS ROAD	Full Length
TAVERNERS ROAD	Full Length
WADDELLS ROAD	Full Length
WARDS ROAD	Full Length
WILKINSONS ROAD	Full Length
WINTERS ROAD	Full Length

* For the list of roads please refer to the index table in the end of the document.



RCA Pre-approved HPMV Routes

Ashburton District Dorie

Legend

- Local Road
- Territorial Authority Boundary

Road/Street Name	Extent of Road/Street
ACTON ROAD	Full Length
AWAROA SCHOOL ROAD	Full Length
BUCKLEYS ROAD	Full Length
CARRUTHERS ROAD	Full Length
CHERTSEY KYLE ROAD	Full Length
CORBETTS ROAD NORTH	Full Length
DOBSONS FERRY ROAD	Full Length
DOLANS ROAD	Full Length
DORIE SCHOOL ROAD	Full Length
GARDINERS ROAD	Full Length
GRIGGS ROAD	Full Length
HAMPTONS ROAD	Full Length
HARRISONS ROAD	Full Length
HAYLORS ROAD	Full Length
KINGSBURY ROAD	Full Length
KYLE ROAD	Full Length
LAMBIES ROAD (PENDARVES)	Full Length
LONGS ROAD	Full Length
MAINWARINGS ROAD	Full Length
MCCRORYS ROAD	Full Length
MUCKLES ROAD	Full Length
WINTERS ROAD	Full Length

* For the list of roads please refer to the index table in the end of the document.



RCA Pre-approved HPMV Routes

Ashburton District Double Hill

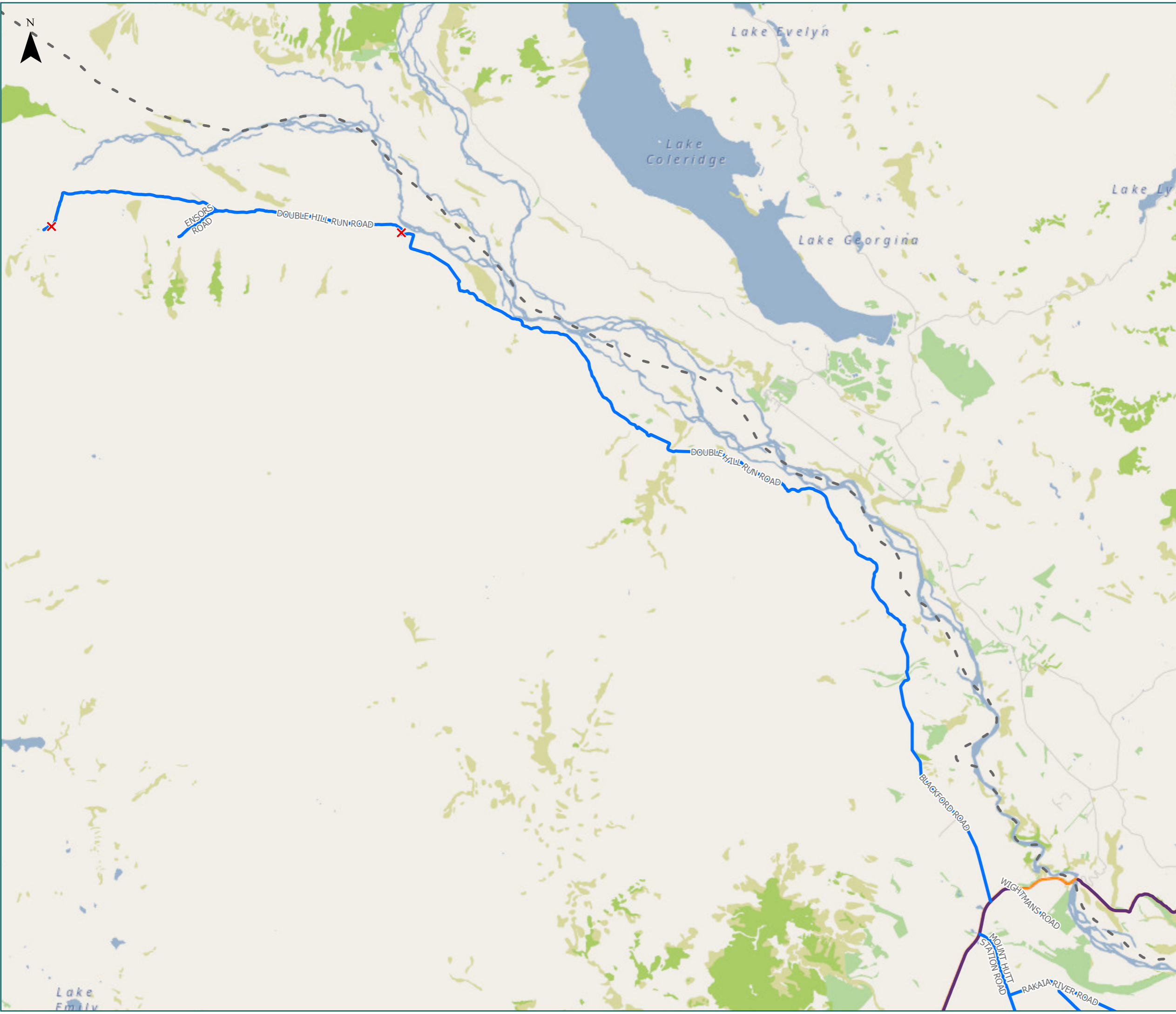
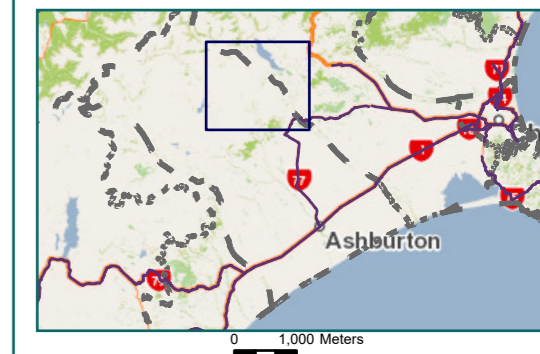
Legend

- ✗ Bridges Not Permitted To Pass
- Local Road
- State Highway
- Territorial Authority
- - - Boundary

Page 17 of 18

Road/Street Name	Extent of Road/Street
BLACKFORD ROAD	Full Length
DOUBLE HILL RUN ROAD	DO NOT CROSS Glenariffe Stream
ENSORS ROAD	Full Length
HAPPY VALLEY ROAD [PAPER ROAD]	Full Length
MARRS ROAD	Full Length
MOUNT HUTT STATION ROAD	DO NOT CROSS Dry Creek
RAKAIA RIVER ROAD	DO NOT CROSS Rangitata Diversion Race (RDR)
WIGHTMANS ROAD	Full Length

* For the list of roads please refer to the index table in the end of the document.



RCA Pre-approved HPMV Routes

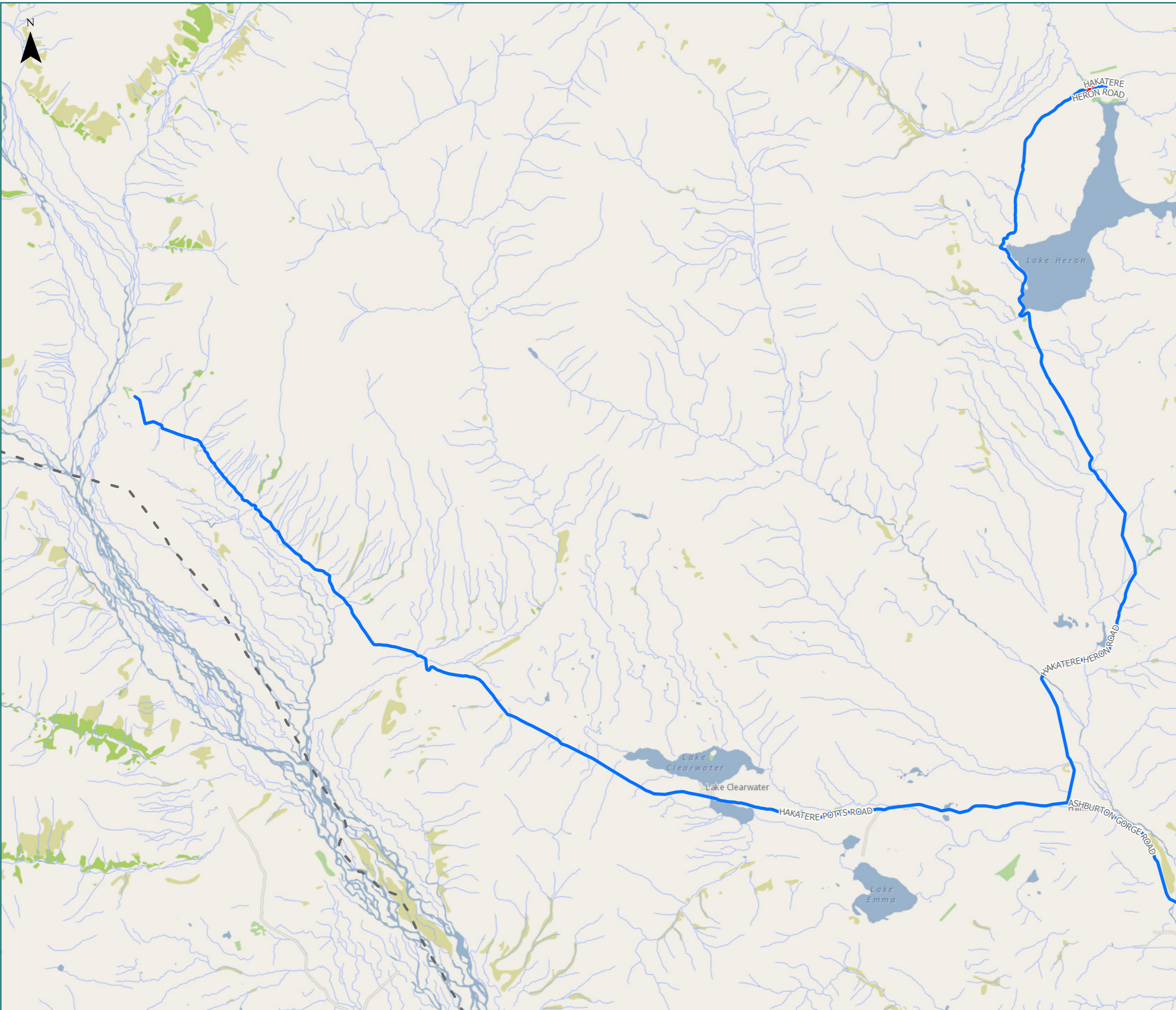
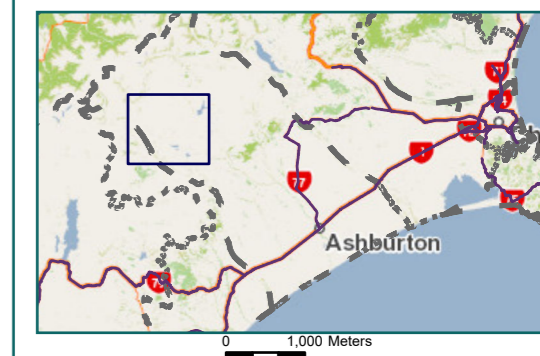
Ashburton District Ashburton Lakes

Legend

-  Bridges Not Permitted To Pass
-  Local Road
-  Territorial Authority Boundary
-  Boundary

Road/Street Name	Extent of Road/Street
ASHBURTON GORGE ROAD	Full Length
HAKATERE HERON ROAD	DO NOT CROSS Lake Stream
HAKATERE POTTS ROAD	Full Length

* For the list of roads please refer to the index table in the end of the document.



Ashburton District Map Index Page

Route Name	Page
BEACH ROAD (Full Length)	1
BURNETT STREET WEST (Full Length)	1
CAMERON STREET EAST (ASHBURTON) (Full Length)	1
CASS STREET (Full Length)	1
CHALMERS AVENUE EAST (Full Length)	1
CHALMERS AVENUE ROTARY SOUTH (Full Length)	1
CHALMERS AVENUE WEST (Full Length)	1
COX STREET (Full Length)	1
DOBSON STREET EAST (Full Length)	1
DOBSON STREET WEST (Full Length)	1
EAST STREET (Full Length)	1
HAVELOCK STREET (Full Length)	1
JOHN STREET (ASHBURTON) (Full Length)	1
KERMODE STREET EAST (Full Length)	1
KERMODE STREET WEST (Full Length)	1
KERMODE STREET WEST ROTARY (Full Length)	1
MCNALLY STREET (Full Length)	1
MOORE STREET (Full Length)	1
PARK STREET (Full Length)	1
PETER STREET WEST (Full Length)	1
RANGE STREET (Full Length)	1
ROBINSON STREET (ASHBURTON) (Full Length)	1
SERVICE LANE BEACH ROAD (Full Length)	1
SERVICE LANE PETER STREET (Full Length)	1
SERVICE LANE WEST STREET (Full Length)	1
SMALLBONE DRIVE (Full Length)	1
SOUTH STREET (Full Length)	1
TANCRED STREET WEST (ASHBURTON) (Full Length)	1
THE TERRACE (Full Length)	1
TREVORS ROAD (ASHBURTON) (Full Length)	1
VICTORIA STREET (Full Length)	1
WAKANUI ROAD (Full Length)	1

Route Name	Page
WALKER STREET (Full Length)	1
WALNUT AVENUE (Full Length)	1
WALNUT AVENUE NORTH (Full Length)	1
WALNUT AVENUE SOUTH (Full Length)	1
WATSON STREET (Full Length)	1
WILLIAM STREET (ASHBURTON) (Full Length)	1
WILLS STREET EAST (Full Length)	1
ALLENS ROAD (Full Length)	2
ASHBURTON STAVELEY ROAD DO NOT CROSS Rangitata Diversion Race (RDR)	2
BELT ROAD (Full Length)	2
BREMNERS ROAD (Full Length)	2
BRIDGE STREET (ASHBURTON) (Full Length)	2
BUCHANS ROAD (Full Length)	2
COMPANY ROAD (Full Length)	2
FARM ROAD (Full Length)	2
GLASSWORKS ROAD (Full Length)	2
GOLF LINKS DRIVE (Full Length)	2
HARRISON STREET (Full Length)	2
HARRISON STREET ROTARY (Full Length)	2
HEPBURNS ROAD (Full Length)	2
HILLS ROAD (Full Length)	2
HOLLANDS ROAD (Full Length)	2
MALCOLM MCDOWELL AVENUE (Full Length)	2
MCCORMICKS ROAD (Full Length)	2
MELROSE ROAD (Full Length)	2
MITCHAM ROAD (Full Length)	2
OAK GROVE EAST (Full Length)	2
OAK GROVE WEST (Full Length)	2
RACECOURSE ROAD (Full Length)	2
RAWLES CROSSING ROAD (Full Length)	2
RAWLES CROSSING ROAD NORTH (Full Length)	2
RUNDLES ROAD (Full Length)	2
SEAFIELD ROAD (Full Length)	2

Route Name	Page
SERVICE LANE ALLENTON (Full Length)	2
SMYTHS ROAD (Full Length)	2
WOOLLEN MILLS DRIVE (Full Length)	2
ALBERT STREET (Full Length)	3
ANSTISS STREET (Full Length)	3
ASHFORD AVENUE (Full Length)	3
BEBBINGTONS ROAD (Full Length)	3
BISSET STREET (Full Length)	3
CHALMERS AVENUE ROTARY NORTH (Full Length)	3
CHERTSEY ROAD (Full Length)	3
CHRISTYS ROAD (Full Length)	3
COCHRANES ROAD (Full Length)	3
COPLANDS ROAD (Full Length)	3
CRUM STREET (Full Length)	3
DROMORE HATFIELD ROAD (Full Length)	3
DROMORE METHVEN ROAD (Full Length)	3
DROMORE STATION ROAD (Full Length)	3
FAIRFIELD ROAD (Full Length)	3
FAIRFIELD ROAD WEST (Full Length)	3
HANRAHANS ROAD (Full Length)	3
HOATTENS ROAD (Full Length)	3
JB CULLEN DRIVE (Full Length)	3
JB CULLEN DRIVE ROTARY (Full Length)	3
LE BRETONS ROAD (Full Length)	3
LYNN STREET (Full Length)	3
MILTON ROAD NORTH (Full Length)	3
MILTON ROAD SOUTH (Full Length)	3
MORRIS ROAD (Full Length)	3
MURDOCHS ROAD (Full Length)	3
NORTHPARK ROAD (Full Length)	3
OTLEY STREET (Full Length)	3
RULES ROAD (Full Length)	3
SERVICE LANE NETHERBY (Full Length)	3

Route Name	Page
SIMPLACE (Full Length)	3
SINCLAIR STREET (Full Length)	3
SINGLETREE ROAD (Full Length)	3
SOMERTON ROAD (Full Length)	3
STANLEY ROAD (Full Length)	3
TAVERNERS ROAD (Full Length)	3
WINCHMORE DROMORE ROAD (Full Length)	3
WINTERS ROAD (Full Length)	3
WORKS ROAD (Full Length)	3
ASHTON ROAD (Full Length)	4
BEACH ROAD EAST (Full Length)	4
BEGGS ROAD (Full Length)	4
BONNINGTONS ROAD (Full Length)	4
BOUNDARY ROAD (Full Length)	4
BUCKLEYS ROAD (Full Length)	4
BUTTERICKS ROAD (Full Length)	4
COLLISONS ROAD (Full Length)	4
CORBETTS ROAD SOUTH (Full Length)	4
CROYS ROAD (Full Length)	4
DAWSONS ROAD (Full Length)	4
DENSHIRES ROAD SOUTH (Full Length)	4
DOAKS ROAD [PAPER ROAD] (Full Length)	4
ELGIN ROAD (Full Length)	4
FITZGERALD ROAD (Full Length)	4
FORDS ROAD (Full Length)	4
GARTARTAN ROAD (Full Length)	4
GIBSONS ROAD (Full Length)	4
GRAHAMS ROAD (Full Length)	4
GREENS ROAD (Full Length)	4
GRIFFITHS ROAD (Full Length)	4
GROVE FARM ROAD (Full Length)	4
HALF CHAIN ROAD (Full Length)	4
HAMPTONS ROAD (Full Length)	4

Route Name	Page
INNES ROAD (Full Length)	4
INVERROSE ROAD (Full Length)	4
LOWER BEACH ROAD (Full Length)	4
MAGINNESS ROAD (Full Length)	4
NICOLLS ROAD (Full Length)	4
OKEEFE ROAD (Full Length)	4
PAINTERS ROAD (Full Length)	4
RIVER ROAD (Full Length)	4
RUSSELLS ROAD (Full Length)	4
RYANS ROAD (Full Length)	4
SEASIDE ROAD (Full Length)	4
SHEPHERDS ROAD (Full Length)	4
SMALLS ROAD (Full Length)	4
STRANGES ROAD (Full Length)	4
TERRACE ROAD (Full Length)	4
VALVERDE ROAD (Full Length)	4
WAKANUI BEACH ROAD (Full Length)	4
WAKANUI SCHOOL ROAD (Full Length)	4
WAKANUI TOWNSHIP ROAD (Full Length)	4
WHEATSTONE ROAD (Full Length)	4
WHEATSTONE ROAD SOUTH (Full Length)	4
WILKIN STREET (Full Length)	4
WILKINS ROAD (Full Length)	4
WILLIAMS ROAD (Full Length)	4
WILSONS ROAD (Full Length)	4
WRIGHTS ROAD (Full Length)	4
ANNETTS ROAD (Full Length)	5
BARFORD ROAD (Full Length)	5
BARNSWOOD ROAD (Full Length)	5
BELLS ROAD (Full Length)	5
BRYANT STREET (Full Length)	5
CHATMOS ROAD (Full Length)	5
CHISNALLS ROAD (Full Length)	5

Route Name	Page
COLDSTREAM ROAD (Full Length)	5
CRACROFT MARONAN ROAD (Full Length)	5
CRACROFT STREET (Full Length)	5
DELAMAINE STREET (Full Length)	5
DICKSONS ROAD (Full Length)	5
FERRIMANS ROAD (Full Length)	5
FIELDS ROAD (Full Length)	5
FOUNTAINES ROAD (Full Length)	5
FRAMPTONS ROAD (Full Length)	5
FRASERS ROAD (Full Length)	5
FRISBYS ROAD (Full Length)	5
GIDDINGS ROAD (Full Length)	5
GILLS ROAD (Full Length)	5
GRAHAM STREET (Full Length)	5
HACKTHORNE ROAD (Full Length)	5
HASSAL STREET (Full Length)	5
HENDERSONS ROAD (Full Length)	5
HILLS ROAD WEST (Full Length)	5
HINDS ARUNDEL ROAD (Full Length)	5
HINDS LISMORE ROAD (Full Length)	5
HINDS RIVER ROAD (Full Length)	5
ISLEWORTH ROAD (Full Length)	5
JACKSONS ROAD (Full Length)	5
JAMES STREET (HINDS) (Full Length)	5
JOHN STREET (HINDS) (Full Length)	5
KENNELS ROAD (Full Length)	5
LAGMHOR ROAD (Full Length)	5
LAINGS ROAD (Full Length)	5
LANGDONS ROAD (Full Length)	5
LENNIES ROAD (Full Length)	5
LIDDLES ROAD (Full Length)	5
LILLS ROAD (Full Length)	5
LISMORE MAYFIELD ROAD (Full Length)	5

Route Name	Page
LISMORE SCHOOL ROAD (Full Length)	5
LONGBEACH ROAD (Full Length)	5
LONGBEACH ROAD RAIL CROSSING (Full Length)	5
LOVETTS ROAD (Full Length)	5
LOWERYS ROAD (Full Length)	5
LOWES ROAD (Full Length)	5
LYNNFORD ROAD (Full Length)	5
MARONAN EALING ROAD (Full Length)	5
MARONAN ROAD (Full Length)	5
MARONAN VALETTA ROAD (Full Length)	5
MCCONNELLS ROAD NORTH (Full Length)	5
MCCONNELLS ROAD SOUTH (Full Length)	5
MCDOUGALLS ROAD (Full Length)	5
MCGILLEN AVENUE (Full Length)	5
MCLENNONS ROAD (Full Length)	5
MCMURDO STREET For access to Mainfreight depot	5
MELCOMBE STREET (Full Length)	5
MILL ROAD (Full Length)	5
MILL ROAD EXTENSION (Full Length)	5
MILLARS ROAD (Full Length)	5
MONTGOMERYS ROAD (Full Length)	5
MULLIGANS ROAD (Full Length)	5
NUGENT STREET (Full Length)	5
OLD MAIN SOUTH ROAD (Full Length)	5
OSBORNS ROAD (Full Length)	5
PLANTATION ROAD (Full Length)	5
POOLES ROAD (Full Length)	5
READS ROAD (Full Length)	5
REMITONS ROAD (Full Length)	5
ROSS ROAD (Full Length)	5
RUSHFORD ROAD (Full Length)	5
SANCTUARY ROAD (Full Length)	5
SCALES ROAD (Full Length)	5

Route Name	Page
SERVICE LANE SH 1 TINWALD (Full Length)	5
SHEARMAN STREET (Full Length)	5
SIBERIA ROAD (Full Length)	5
SIMPSONS ROAD (Full Length)	5
SOMERVILLE ROAD (Full Length)	5
STONYLEA ROAD (Full Length)	5
SURVEYORS ROAD DO NOT CROSS Hinds River	5
SWAMP ROAD (Full Length)	5
TARBOTTONS ROAD (Full Length)	5
THEWS ROAD (Full Length)	5
THOMSON STREET For access to Mainfreight depot	5
TILSONS ROAD EAST (Full Length)	5
TILSONS ROAD WEST (Full Length)	5
TIMARU TRACK ROAD (Full Length)	5
TINDALLS ROAD (Full Length)	5
TINWALD WESTERFIELD MAYFIELD ROAD (Full Length)	5
TREVORS ROAD (CAREW) (Full Length)	5
TWM LOOP (Full Length)	5
WESTERFIELD LISMORE ROAD (Full Length)	5
WESTERFIELD SCHOOL ROAD (Full Length)	5
WINDERMERE ROAD (Full Length)	5
WINSLOW ROAD (Full Length)	5
WINSLOW WESTERFIELD ROAD (Full Length)	5
WINSLOW WILLOWBY ROAD (Full Length)	5
ADAM JACKSON ROAD (Full Length)	6
ADAMS ROAD (Full Length)	6
BOLTONS ROAD (Full Length)	6
BROGDENS ROAD (Full Length)	6
BRYANTS ROAD (Full Length)	6
COLDSTREAM SETTLEMENT ROAD (Full Length)	6
CROWS ROAD (Full Length)	6
DAVISON'S ROAD (Full Length)	6
DOBSONS ROAD (Full Length)	6

Route Name	Page
DOWDINGS ROAD (Full Length)	6
DRAIN ROAD (Full Length)	6
EALING MONTALTO ROAD (Full Length)	6
EALING ROAD (Full Length)	6
EMERSONS ROAD (Full Length)	6
ISLEWORTH SETTLEMENT ROAD (Full Length)	6
JUNCTION ROAD (Full Length)	6
LLOYDS ROAD (Full Length)	6
NEW PARK ROAD (Full Length)	6
OCEAN VIEW ROAD DO NOT CROSS McKeages Drain	6
POPLAR ROAD (Full Length)	6
PYES ROAD (Full Length)	6
STEVENS ROAD (Full Length)	6
STORRIERS ROAD (Full Length)	6
TANSEYS ROAD (Full Length)	6
TAYLORS ROAD (Full Length)	6
TRIG POLE ROAD (Full Length)	6
WAIPUNA ROAD (Full Length)	6
WITHELLS ROAD (Full Length)	6
WRENS ROAD (Full Length)	6
ARUNDEL RAKAIA GORGE ROAD (Full Length)	7
BARRETT'S PLANTATION ROAD (Full Length)	7
BAXTERS ROAD (Full Length)	7
BENNETTS ROAD (Full Length)	7
COSKERIES ROAD DO NOT CROSS Rangitata Diversion Race (RDR)	7
GEORGE ROSS ROAD (Full Length)	7
GUMBRELLS ROAD (Full Length)	7
JAINES ROAD (Full Length)	7
JONES ROAD (Full Length)	7
LAKES ROAD (Full Length)	7
LANE TASKERS ROAD (Full Length)	7
MONTALTO ROAD DO NOT CROSS Rangitata Diversion Race (RDR)	7
MOORHOUSE ROAD (Full Length)	7

Route Name	Page
PINEVIEW ROAD (Full Length)	7
RANGITATA TERRACE ROAD (Full Length)	7
RUAPUNA SCHOOL ROAD (Full Length)	7
SHEPHERDS BUSH ROAD DO NOT CROSS Mayfield Hinds Bridge # 3	7
ANAMA CAVENDISH ROAD DO NOT CROSS Rangitata Diversion Race (RDR)	8
ANAMA SCHOOL ROAD (Full Length)	8
ANAMA SETTLEMENT ROAD (Full Length)	8
ANAMA STATION ROAD (Full Length)	8
ANAMA VALETTA ROAD Anama Valetta Road is unformed from Anama Cavendish Road to Arundel Rakaia Gorge Road	8
ASHBURTON GORGE ROAD (Full Length)	8
BLAIRS ROAD (Full Length)	8
BROTHERS ROAD (Full Length)	8
BRUCES ROAD (MT SOMERS) (Full Length)	8
CHAPMANS ROAD (Full Length)	8
CLIFFORDS ROAD (Full Length)	8
COXS ROAD (Full Length)	8
FOXS ROAD DO NOT CROSS Rangitata Diversion Race (RDR)	8
HEENANS ROAD (Full Length)	8
HEKEAO ROAD (Full Length)	8
HEWSONS ROAD (Full Length)	8
HINDS GORGE ROAD (Full Length)	8
HOODS ROAD (Full Length)	8
KLONDYKE ROAD (Full Length)	8
KLONDYKE TERRACE DO NOT CROSS Rangitata Diversion Race (RDR)	8
LOWER DOWNS ROAD (Full Length)	8
MAYFIELD KLONDYKE ROAD DO NOT CROSS Rangitata Diversion Race (RDR)	8
MORROWS ROAD (Full Length)	8
OLD GIG ROAD (Full Length)	8
PEACHES ROAD (Full Length)	8
PETERS ROAD (Full Length)	8
PRICES ROAD (Full Length)	8
QUARRY ROAD (Full Length)	8
SURREY HILLS ROAD (Full Length)	8

Route Name	Page
TRAMWAY ROAD DO NOT CROSS Rangitata Diversion Race (RDR)	8
UPPER DOWNS ROAD (Full Length)	8
UPPER DOWNS ROAD EXTENSION (Full Length)	8
WATTS ROAD (Full Length)	8
WOODVALE ROAD (Full Length)	8
AIKENS ROAD (Full Length)	9
ALLAN SMITHS ROAD (Full Length)	9
ASHBURTON RIVER ROAD DO NOT CROSS Rangitata Diversion Race (RDR)	9
BLACKS ROAD (Full Length)	9
BLANDS ROAD (Full Length)	9
BRAEMAR LAURISTON ROAD (Full Length)	9
BRAEMAR ROAD (Full Length)	9
BULLS ROAD (Full Length)	9
DIP ROAD DO NOT CROSS Rangitata Diversion Race (RDR)	9
DRISCOLLS ROAD (Full Length)	9
FECHNEYS ROAD (NORTH LEG) (Full Length)	9
FECHNEYS ROAD (SOUTH LEG) (Full Length)	9
FLEMINGS ROAD (Full Length)	9
FORKS ROAD DO NOT CROSS Rangitata Diversion Race (RDR)	9
GATES ROAD (Full Length)	9
GOUGHS CROSSING ROAD (Full Length)	9
LOCHHEADS ROAD (Full Length)	9
LYNDHURST ROAD (Full Length)	9
MAYFIELD VALETTA ROAD (Full Length)	9
MCKENDRYS ROAD (Full Length)	9
MCKENZIES ROAD (Full Length)	9
MCNEILLS ROAD (Full Length)	9
MOODIES ROAD (Full Length)	9
MUIRHEADS ROAD (Full Length)	9
NEWTONS ROAD (Full Length)	9
OAKLEYS ROAD (Full Length)	9
OLIVERS ROAD (Full Length)	9
ORCHARDS ROAD (Full Length)	9

Route Name	Page
OSHEAS ROAD (Full Length)	9
POLE ROAD (Full Length)	9
ROONEYS ROAD (Full Length)	9
SHEARERS ROAD (Full Length)	9
SHEATES ROAD (Full Length)	9
SMITHS ROAD (Full Length)	9
SPRINGFIELD ROAD EAST (Full Length)	9
SPRINGFIELD ROAD WEST (Full Length)	9
TANKS ROAD (Full Length)	9
THOMPSONS TRACK (Full Length)	9
VALETTA WESTERFIELD ROAD (Full Length)	9
WALKHAMS ROAD (Full Length)	9
WALLACES ROAD (Full Length)	9
WITHERS FARM EXTENSION (Full Length)	10
BOYDS ROAD (Full Length)	10
BURGESS ROAD (Full Length)	10
BURNETT ROAD (Full Length)	10
CARNEYS ROAD (Full Length)	10
FLYNN'S ROAD (Full Length)	10
GUNDRYS ROAD (Full Length)	10
JIG ROAD (Full Length)	10
LAMBIES ROAD (STAVELEY) DO NOT CROSS Rangitata Diversion Race (RDR)	10
MAYORS ROAD (Full Length)	10
MINE ROAD (Full Length)	10
PAWSEYS ROAD (Full Length)	10
RUTHERFORDS ROAD (Full Length)	10
SAWMILL ROAD (Full Length)	10
SPRINGBURN BUSHSIDE ROAD DO NOT CROSS Rangitata Diversion Race (RDR)	10
STACKHOUSE ROAD (Full Length)	10
SYMES ROAD (Full Length)	10
WINTERSLOW ROAD (Full Length)	10
ALFORD FOREST CEMETERY ROAD DO NOT CROSS Rangitata Diversion Race (RDR)	11
ALFORD FOREST SETTLEMENT ROAD (Full Length)	11

Route Name	Page
ALFORD FOREST SETTLEMENT ROAD EXT. (Full Length)	11
BACK TRACK (Full Length)	11
BARKERS ROAD DO NOT CROSS Rangitata Diversion Race (RDR)	11
BARKERS ROAD EASTBOUND (Full Length)	11
CAIRNBRAE ROAD (Full Length)	11
DARTS ROAD DO NOT CROSS Rangitata Diversion Race (RDR)	11
DARTS ROAD EXTENSION (Full Length)	11
DOLMA STREET (Full Length)	11
DRAYTON ROAD (Full Length)	11
EARLYS ROAD (Full Length)	11
FOREST DRIVE (Full Length)	11
HALL STREET (Full Length)	11
HART ROAD (Full Length)	11
HOBBS ROAD (Full Length)	11
HOLMES ROAD (Full Length)	11
LEDGERWOODS ROAD DO NOT CROSS Rangitata Diversion Race (RDR)	11
LEWINS ROAD (Full Length)	11
LINE ROAD (Full Length)	11
LONGS FORD ROAD (Full Length)	11
MACKIE STREET (METHVEN) (Full Length)	11
MARRS ROAD (Full Length)	11
MCCLOYS ROAD (Full Length)	11
MCFARLANES ROAD (Full Length)	11
MCLENNANS BUSH ROAD (Full Length)	11
METHVEN CHERTSEY ROAD (Full Length)	11
MOUNT HUTT STATION ROAD DO NOT CROSS Dry Creek	11
MT HARDING ROAD DO NOT CROSS Rangitata Diversion Race (RDR)	11
NUFFIELD DRIVE (Full Length)	11
POLE ROAD EXTENSION (Full Length)	11
PUDDING HILL ROAD DO NOT CROSS Rangitata Diversion Race (RDR)	11
RACECOURSE AVENUE (Full Length)	11
RAKAIA BARRHILL METHVEN ROAD (Full Length)	11
RAKAIA RIVER ROAD DO NOT CROSS Rangitata Diversion Race (RDR)	11

Route Name	Page
REYNOLDS ROAD (Full Length)	11
ROSEHILL ROAD (Full Length)	11
SCARNESS ROAD (Full Length)	11
SEVENTH DAY ADVENTIST CAMP ROAD (Full Length)	11
SOUTH BELT (Full Length)	11
SPOORS ROAD (Full Length)	11
VAUGHANS ROAD (Full Length)	11
WITHERS FARM ROAD DO NOT CROSS Rangitata Diversion Race (RDR)	11
ACCOMMODATION ROAD (Full Length)	12
BIRCH AVENUE (Full Length)	12
FARQUHARS ROAD (Full Length)	12
FRANKS ROAD (Full Length)	12
HAPPY VALLEY ROAD [PAPER ROAD] (Full Length)	12
HIGHBANK CAIRNBRAE ROAD (Full Length)	12
HIGHBANK SCHOOL ROAD (Full Length)	12
HOLMESLEE ROAD (Full Length)	12
IRWINS ROAD (Full Length)	12
LAURISTON BARRHILL ROAD (Full Length)	12
LIME AVENUE (Full Length)	12
MANGINS ROAD (Full Length)	12
MASSEY ROAD (Full Length)	12
OAK AVENUE (Full Length)	12
OBRIENS ROAD (Full Length)	12
ORRS ROAD (Full Length)	12
PANNETTS ROAD (Full Length)	12
POPLAR AVENUE [PAPER ROAD] (Full Length)	12
RAKAIA BARRHILL METHVEN ROAD EXT (Full Length)	12
SYCAMORE AVENUE (Full Length)	12
URRALL ROAD (Full Length)	12
WOODS ROAD (Full Length)	12
JAMIESONS ROAD (Full Length)	13
LETHAMS ROAD (Full Length)	13
MACKIES ROAD (Full Length)	13

Route Name	Page
ROBERTSONS ROAD (Full Length)	13
ROKEBY SCHOOL ROAD (Full Length)	13
TAVENDALE ROAD (Full Length)	13
WAKELINS ROAD (Full Length)	13
WILKINSONS ROAD (Full Length)	13
WINCHMORE LAURISTON ROAD (Full Length)	13
WINCHMORE SCHOOL ROAD (Full Length)	13
ACTON INTAKE ROAD (Full Length)	14
ACTON ROAD (Full Length)	14
ACTON ROAD EXTENSION (Full Length)	14
BAKER ROAD (Full Length)	14
BOAGS ROAD (Full Length)	14
BOWEN STREET EAST (Full Length)	14
BURROWES ROAD (Full Length)	14
CHAPMAN STREET (RAKAIA) (Full Length)	14
DUNCANS ROAD (Full Length)	14
ELIZABETH AVENUE 01 WEST (Full Length)	14
ELIZABETH AVENUE 02 ROTARY WEST (Full Length)	14
ELIZABETH AVENUE 03 RAILWAY (Full Length)	14
ELIZABETH AVENUE 04 ROTARY EAST (Full Length)	14
ELIZABETH AVENUE 05 NORTH (Full Length)	14
ELIZABETH AVENUE 06 SOUTH (Full Length)	14
ELIZABETH AVENUE 07 EAST (Full Length)	14
FERGUSSON STREET (Full Length)	14
HARDYS ROAD (Full Length)	14
HATFIELD OVERDALE ROAD (Full Length)	14
JOHNSTON ROAD (Full Length)	14
MAINWARINGS ROAD (Full Length)	14
MARTINS ROAD (Full Length)	14
MCKAYS ROAD (Full Length)	14
MCLACHLANS ROAD (Full Length)	14
MICHAEL STREET EAST (Full Length)	14
NORMANBY ROAD (Full Length)	14

Route Name	Page
PENDARVES RAKAIA ROAD (Full Length)	14
RAILWAY TERRACE EAST (Full Length)	14
ROLLESTON STREET EAST (Full Length)	14
SHEEHANS ROAD (Full Length)	14
SOUTH TOWN BELT (Full Length)	14
ULUNDI ROAD (Full Length)	14
WEST TOWN BELT EAST (Full Length)	14
WEST TOWN BELT WEST (Full Length)	14
WOLSELEY ROAD (Full Length)	14
AWAROA SCHOOL ROAD (Full Length)	15
CHERTSEY KYLE ROAD (Full Length)	15
CHERTSEY LINE ROAD (Full Length)	15
COPLEY ROAD (Full Length)	15
CORBETTS ROAD NORTH (Full Length)	15
DENSHIRES ROAD NORTH (Full Length)	15
DOBSONS FERRY ROAD (Full Length)	15
DOIGS ROAD (Full Length)	15
DOLANS ROAD (Full Length)	15
DORIE SCHOOL ROAD (Full Length)	15
GARDINERS ROAD (Full Length)	15
GRIGGS ROAD (Full Length)	15
HARRISONS ROAD (Full Length)	15
HAYLORS ROAD (Full Length)	15
KYLE ROAD (Full Length)	15
LAMBIES ROAD (PENDARVES) (Full Length)	15
LONGS ROAD (Full Length)	15
MCCRORYS ROAD (Full Length)	15
PERCYS ROAD [PAPER ROAD] (Full Length)	15
STUARTS ROAD (Full Length)	15
WADDELLS ROAD (Full Length)	15
WARDS ROAD (Full Length)	15
CARRUTHERS ROAD (Full Length)	16
KINGSBURYS ROAD (Full Length)	16

Route Name	Page
MUCKLES ROAD (Full Length)	16
BLACKFORD ROAD (Full Length)	17
DOUBLE HILL RUN ROAD DO NOT CROSS Glenariffe Stream	17
ENSORS ROAD (Full Length)	17
WIGHTMANS ROAD (Full Length)	17
HAKATERE HERON ROAD DO NOT CROSS Lake Stream	18
HAKATERE POTTS ROAD (Full Length)	18