

# 1 Rakaia Commercial Vehicle Safety Centre (CVSC) and speed changes



A number of New Zealand Transport Agency Waka Kotahi (NZTA) projects to improve safety in and around Rakaia on State Highway 1 (SH1) will go live over the next few weeks. The testing and completion of the southbound Rakaia Commercial Vehicle Safety Centre (CVSC), two speed changes and two new Intersection Speed Zones, mean there is a lot happening near you.

This newsletter will update you on these projects and what to expect in coming days:

- the Rakaia CVSCs
- where and when speed limits are changing
- where the new Intersection Speed Zones are and how they work.

New, safer speed limits are coming soon for SH1 Rakaia which will make it safer and easier for people using and crossing SH1, especially along SH1 Bridge Street when getting to local shops and businesses. The following speed limit changes have been approved and include the speed changes required for the safe operation of the SH1 Rakaia Commercial Vehicle Safety Centre (CVSC) opening soon.

- The speed limit through Rakaia township will change from 70km/h to 50km/h.
- The speed limit from just north of Weavers Road, including the railway overpass and the Rakaia River Bridge, through to Rakaia township will change from 100km/h to 80km/h.
- 80/60 km/h Intersection Speed Zones (ISZ) will support the safe operation of the CVSC. Variable Speed Limit (VSL) signs (shown in the picture) will be installed at North Rakaia Road first and later at Weavers Road.

## Rakaia Commercial Vehicle Safety Centre (CVSC) update

Construction is almost finished on the southbound Rakaia CVSC site being built just north of the Rakaia River. The Rakaia CVSC is split with a site on both sides of SH1 so trucks only need to turn left in and left out.

Both the north and southbound in-road scales, cameras and electronic signs (used to direct truck drivers into the CVSC) have been installed on SH1. These are in Rakaia township and north of Weavers Road.

The CVSC's in-road and roadside technology will screen passing vehicles 24/7 and any potentially unsafe or non-compliant vehicles will be logged. When the CVSC is staffed by Police, trucks will be directed into the facility, and Police officers can check vehicle weight, road user charges (RUC), certificate of fitness, logbook and driver impairment. From 20 May, trucks travelling south could be directed into the CVSC.

Everyday motorists will not be directed into a CVSC when they're passing. Light vehicles will have their licence plates scanned and information is anonymised within seconds of being captured to maintain privacy. The exception to this is in the case of stolen vehicles.

The Rakaia CVSC is one of 12 facilities NZTA is building on high-volume freight routes around the country for the NZ Police to operate. These facilities are part of the national Commercial Vehicle Safety Programme (CVSP) which is developing an integrated network of cameras,

weigh-in-motion scales and safety centres covering strategic routes across the country. These facilities aim to improve road safety, ensure a level playing field for the industry and encourage compliant vehicle productivity.

Right now, NZTA is making the final touches to the southbound CVSC site and starting a short period of trialing and testing before it's ready to go live. The NZ Police are also installing and testing their equipment and expect to start using the southbound site in mid-2024.

We will start construction of the northbound site soon and finish around mid-2025.

Work on the northbound CVSC site will take place off the road (SH1). There will also be a partial resurfacing of Weavers Road that will take a few weeks and will need traffic management to complete safely.





## Here's what's changing soon

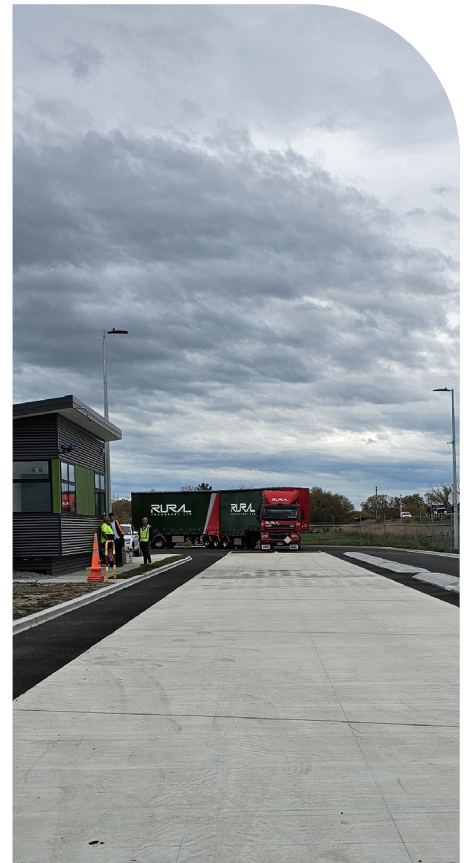
### On Friday 17 May

- Rakaia township speed limits will change from 70km/h to 50km/h.
- The speed limit from about 250m north of Weavers Road will change from 100km/h to 80km/h through to Rakaia township.
- 80/60 km/h Variable Speed Limit signs at North Rakaia Road will go-live.

Additional signage and advertising will let people know about the changes and police will be in the area to remind people that new speed limits apply.

### On Monday 20 May

We will be testing the Intersection Speed Zones (ISZ) and CVSC signs to make sure the connections with the CVSC are working properly. If you are travelling through the area while testing is underway, the ISZ electronic sign may be lit up and activated so you will need to reduce your speed accordingly.



## 1 Rakaia CVSC and speed changes



## Intersection Speed Zones (ISZ) on SH1 at Weavers Road and North Rakaia Road

As part of the safety improvements included with the Rakaia CVSC, we're installing two Intersection Speed Zones (ISZ) to slow traffic to 60km/h on SH1 when vehicles approach from North Rakaia Road or Weavers Road.

An ISZ means when a driver is approaching the highway on either North Rakaia Road or Weavers Road an electronic sign is activated to reduce the legal highway speed on SH1 to 60km/h. This gives drivers on the side roads more time to turn into SH1 and accelerate toward the speed limit, reducing risk taking and congestion.

While ISZs have been approved for both sites, only the North Rakaia Road Variable Speed Limit (VSL) signs are being installed now. Installation of the Weavers Road VSL will be included in construction of the northbound CVSC site.



The VSL sign for the ISZ at North Rakaia Road and Weavers Road will look similar to this.

## A note on speed limits\*

Changing a speed limit is a legal process that includes a formal public consultation step. As you may know, consultation on a new setting of speed limits rule is planned for later in the year\*. Until the new rule is set, we're still following the current rules (Setting of Speed Limits 2022) when we need to change speed limits around new construction projects on state highways. Since we're changing the speed limits around the new Rakaia Commercial Vehicle Safety Centre, we're taking this opportunity to also adjust the speed limit through Rakaia township as consulted on with the public in 2022. We did this because the community supports this change, and it aligns with our safety assessments.



Find out more about Commercial Vehicle Safety Centres at [nzta.govt.nz/CVSP](https://nzta.govt.nz/CVSP)

Get in touch about the Rakaia CVSC by emailing [melanie.williams@nzta.govt.nz](mailto:melanie.williams@nzta.govt.nz)

\*In anticipation of the new rule, we've paused work on our speed management plans. As we receive more information on the Rule, we will work through what it means for other proposals within the Interim State Highway Speed Management Plan.