

Cambridge Community Board

17 May 2023

RELEASED UNDER THE OFFICIAL INFORMATION ACT 1982

SH1 Cambridge to Piarere

Safety Improvements Project Update

- Progress to date
- What's coming up
- A closer look at turnarounds – a key safety feature of this highway
- Keeley's Reserve turnaround
- What we need from you

RELEASED UNDER THE OFFICIAL INFORMATION ACT 1982

1

Cambridge to Piarere safety improvements

Interim plan as at March 2023



- Short-term safety improvements**
- Installing more flexible median barriers and associated turnarounds.
 - A roundabout at Karāpiro Rd/SH1 intersection.
 - Improving safety at other intersections.
 - Current roundabout at Shakespeare Street/Thermal Explorer Highway is an appropriate turnaround for heavy vehicles.

For more information, please visit www.nzta.govt.nz/c2p or email c2p@nzta.govt.nz

Installed flexible median barrier	Flexible median barrier to be installed in 3 to 4 months	Proposed flexible median barrier	Proposed turnaround facility	Proposed roundabout	Left in/left out only



Te Kāwanatanga o Aotearoa
New Zealand Government

This map is indicative only.

23-SH-028

Progress to date

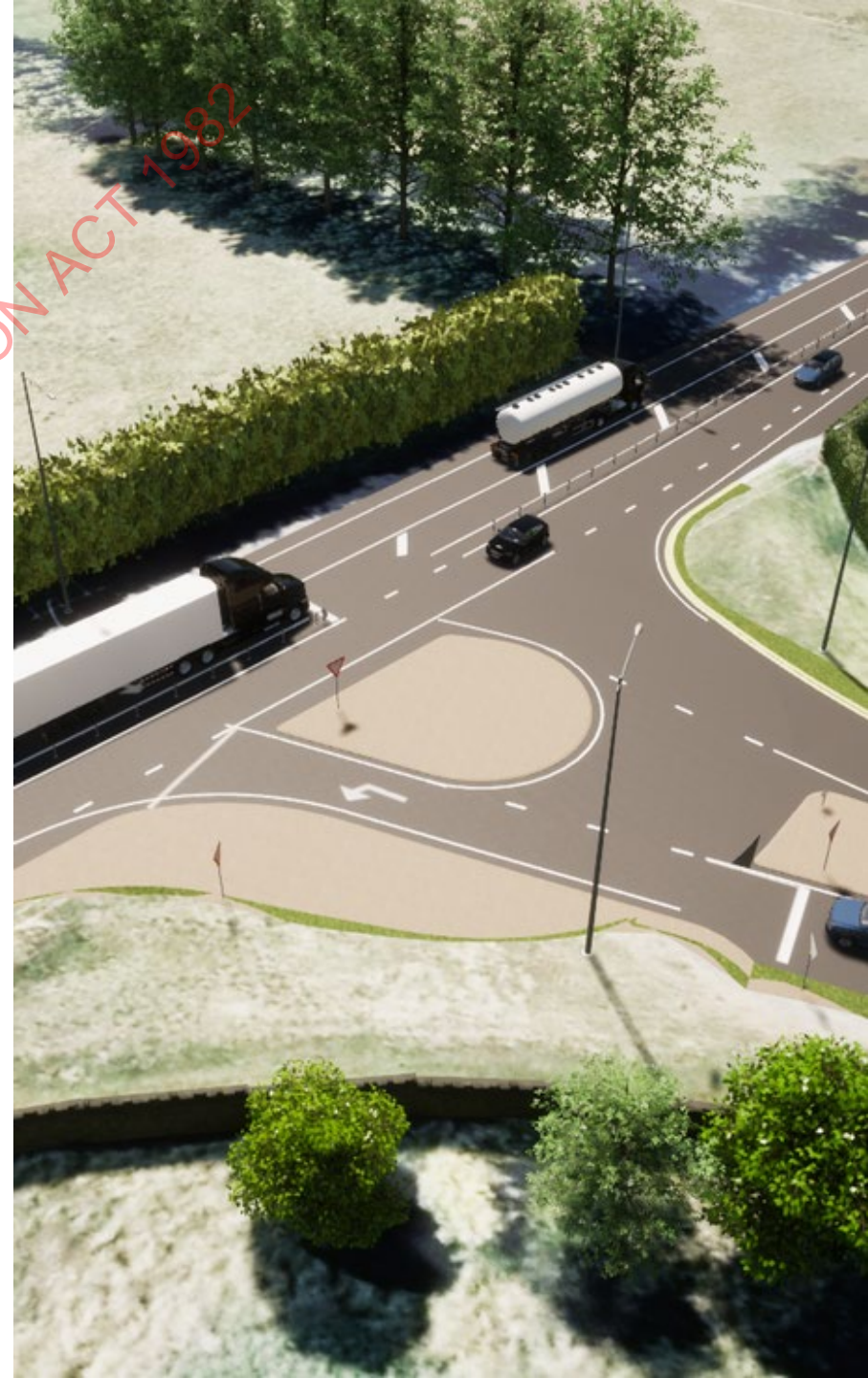
Safety improvements update

- Median barriers installed north of Piarere and between Keeley's Reserve and Kentucky Rd
- All five turnarounds are at the detailed design and consenting stage.
- Progress being made with the Karāpiro roundabout, design and discussions with landowners progressing.
- SH1/SH29 roundabout construction announced to start in October.

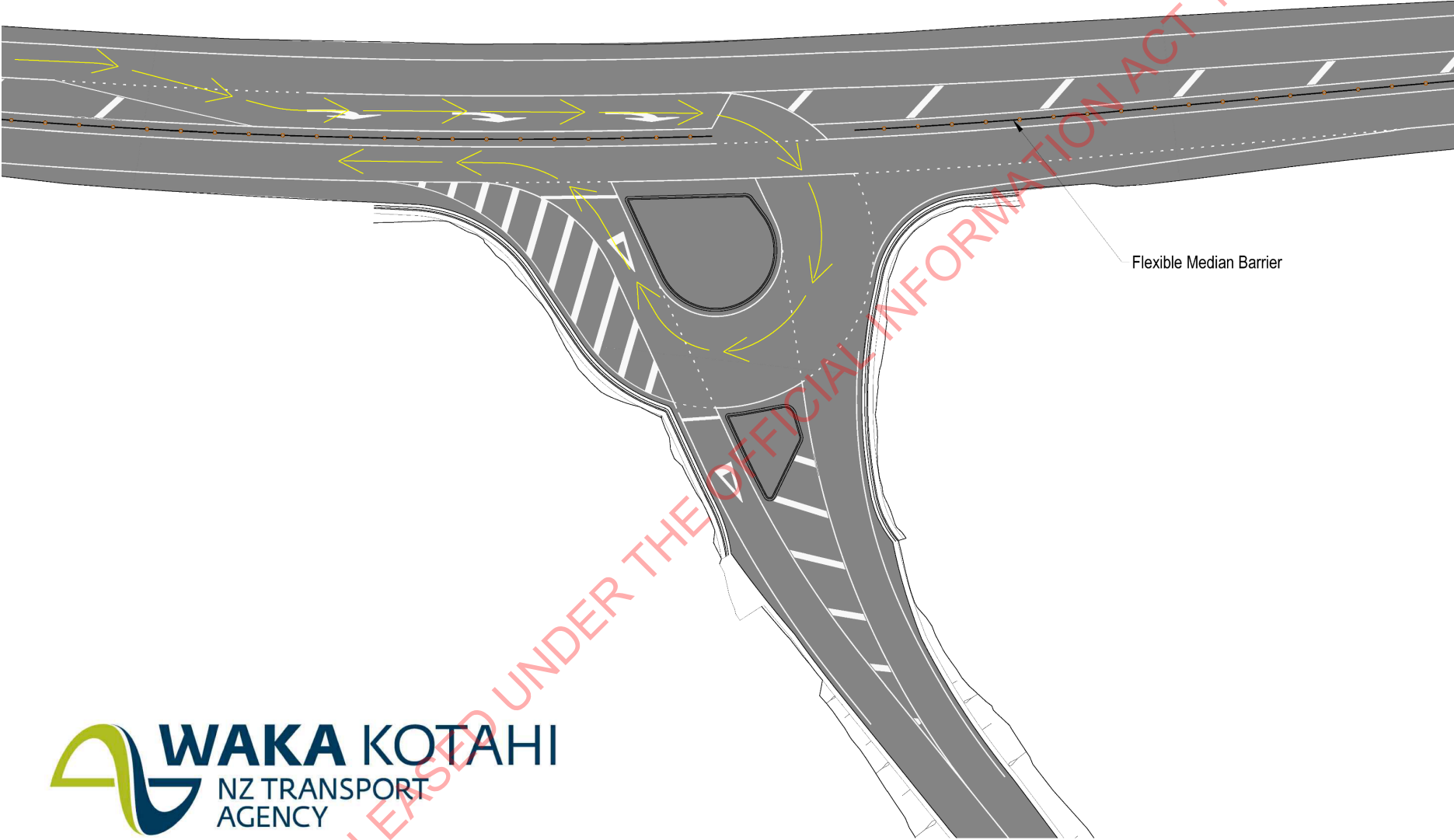


What's coming up

- Contractors are pricing up the next tranche of median barriers (2.4kms from the end of the barrier (800m south of Keeley's Reserve) to just past Kentucky Road. This will connect the existing barriers between Kentucky Road and Piarere and provide almost 7km of continuous barrier.
- Hydro Road turnaround expected to start construction in June-July. Tender documents being prepared.



Turn Around Facility



RELEASED UNDER THE OFFICIAL INFORMATION ACT 1982

Keeley's Reserve

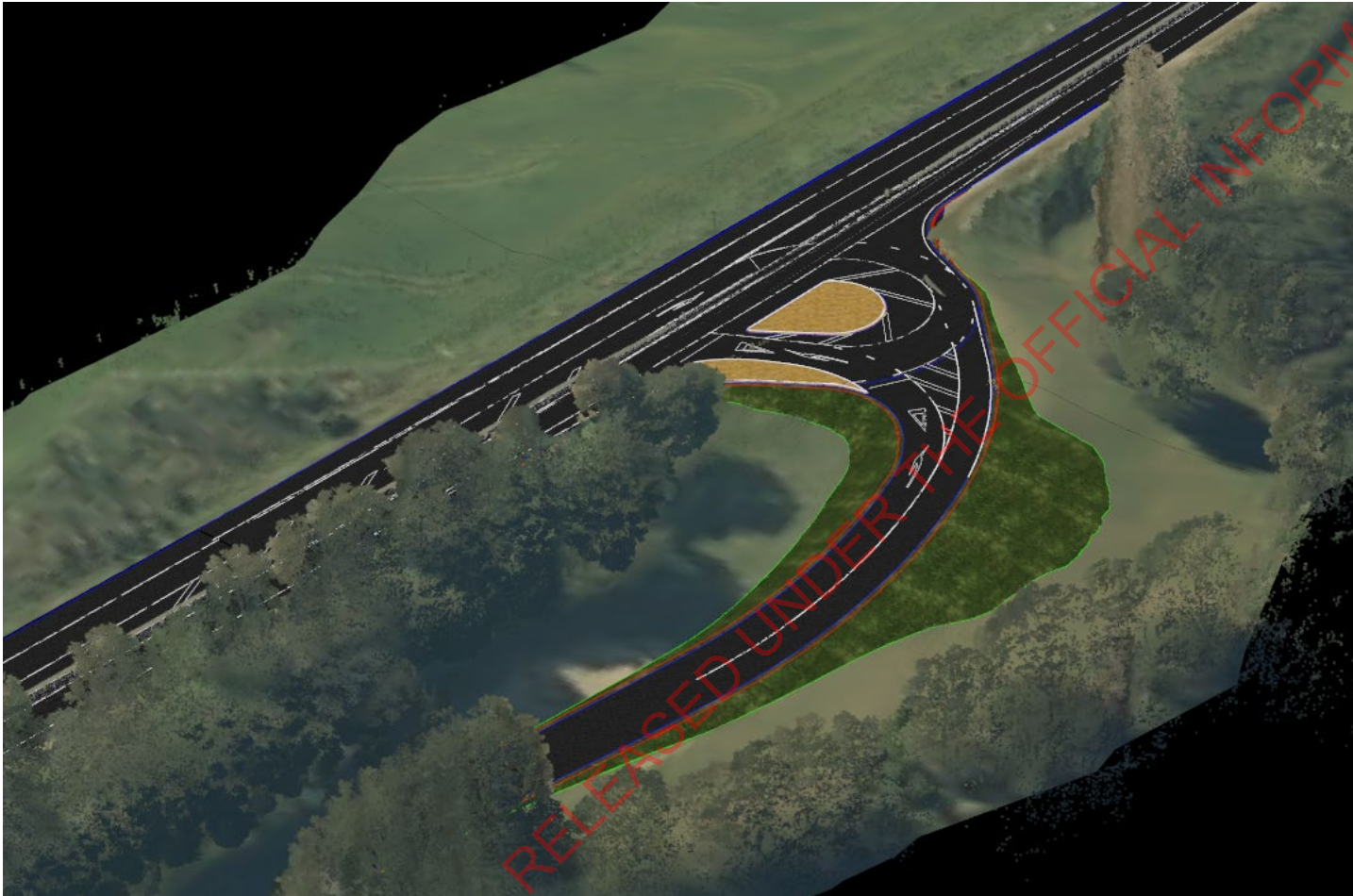
Turnaround planning and construction update

- Planning is advanced for the Keeley's Reserve turnaround.
- Consenting stage in process.
- Iwi and WDC have been engaged on design and construction.

RELEASED UNDER THE OFFICIAL INFORMATION ACT 1982

Keeley's Reserve

Turnaround visualisation 1 of 2



Keeley's Reserve

Turnaround visualisation 2 of 2



Keeley's Turnaround

Timing considerations

- Expected construction time is **3 months**.
- The reserve will need to be closed to traffic during construction, for safety reasons.
- Following earlier engagement with WDC planning and reserves staff construction is planned to start after the peak summer period (mid/late Feb 2024) to minimise disruption

RELEASED UNDER THE OFFICIAL INFORMATION ACT 1982

What we need from you

Community Board input

- To receive this information and let us know if there's anything else you would like the project team to consider.
- Ngā mihi, thank you.

RELEASED UNDER THE OFFICIAL INFORMATION ACT 1982