

Maintenance Discharge Consent Annual Report: Jan-Dec 2016

Consent numbers: REG/2014/2140175, REG/20142140176
Report Date: 31 January 2017
Prepared by: s 9(2)(a) AHBA Delivery Manager
Reviewed by: s 9(2)(a) . AHBA Environmental Consultant
Approved by: s 9(2)(a) AHBA Asset Manager

This report summarises compliance with the Auckland Harbour Bridge maintenance programme consents REG/2014/2140175 & REG/20142140176 for the year 2016.

All works were undertaken in compliance with the consent conditions, and the requirements of the EMP.

A summary of the works undertaken under this consent in the current reporting period is provided in Attachment A. Compliance with thresholds and other controls is summarised below.

Compliance with discharge thresholds (see Attachment B)

	Total (kg)	'Threshold' (kg)	Comply?
Garnet discharged to coast	8390	14680	Yes
Zinc discharged to coast	27.2	223	Yes
'Paint' discharged to coast (incl. zinc)	144.1	646	Yes

Compliance with air controls

	Comply?	Details attached
Buffer zones	Yes	n/a
Wind speed and direction controls	Yes	n/a

Other compliance

	Incident/complaint?	Details attached
Environmental incidents	None	n/a
Noise complaints	None	n/a
Odour complaints	None	n/a

Summary of changes made through AMP

None to report

Attachments

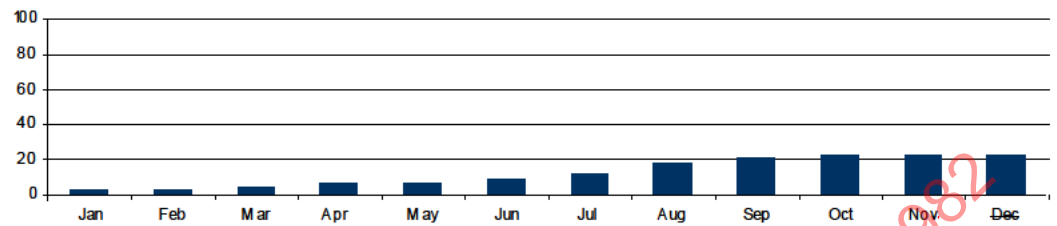
- A. Maintenance Works Log
- B. Discharge Summary Report

AHB Maintenance Discharge Summary Report

2016

Paint

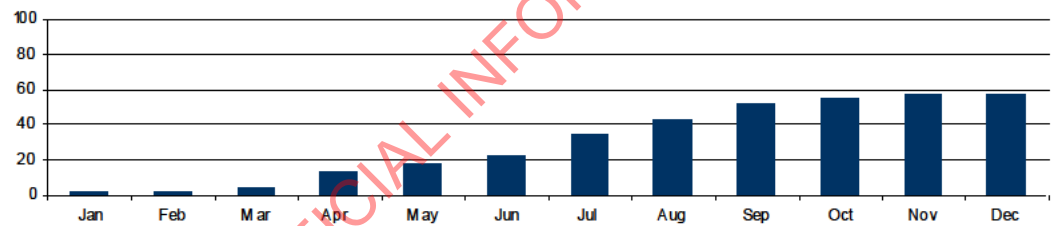
Total Mass Discharged (kg)	144.1
Coastal Threshold (kg)	646
Proportion Used (%)	22
Proportion Remaining (%)	78



	Jan	Feb	Mar	Apr	May	Jun	Jul	Aug	Sep	Oct	Nov	Dec
Mass discharge per month (kg)	19.6	5.4	4.9	9.9	5.4	14.5	18.4	36.5	23.6	4	1.9	0
Cumulative discharge (kg)	19.6	25	29.9	39.8	45.2	59.7	78.1	114.6	138.2	142.2	144.1	144.1

Particulate

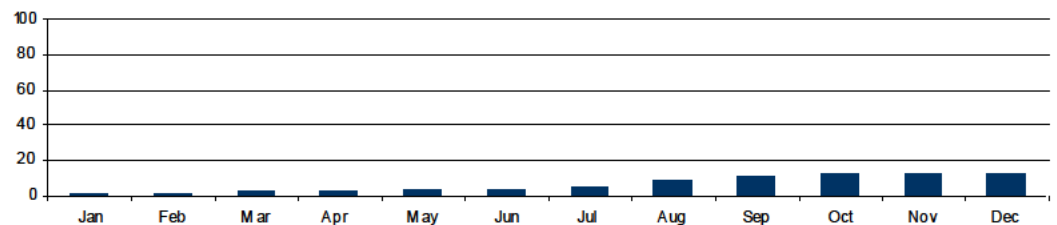
Total Mass Discharged (kg)	8390
Coastal Threshold (kg)	14679
Proportion Used (%)	57
Proportion Remaining (%)	43



	Jan	Feb	Mar	Apr	May	Jun	Jul	Aug	Sep	Oct	Nov	Dec
Mass discharge per month (kg)	300	90	240	1365	630	680	1800	1110	1425	510	240	0
Cumulative discharge (kg)	300	390	630	1995	2625	3305	5105	6215	7640	8150	8390	8390

Zinc

Total Mass Discharged (kg)	27.2
Coastal Threshold (kg)	223
Proportion Used (%)	12
Proportion Remaining (%)	88



	Jan	Feb	Mar	Apr	May	Jun	Jul	Aug	Sep	Oct	Nov	Dec
Mass discharge per month (kg)	3.1	0.5	0.5	2.1	1	1	2.5	9.8	5.2	1	0.5	0
Cumulative discharge (kg)	3.1	3.6	4.1	6.2	7.2	8.2	10.7	20.5	25.7	26.7	27.2	27.2

RELEASED UNDER THE OFFICIAL INFORMATION ACT 1982

AHB Maintenance Works Log

01-Jan-16 - 31-Dec-16

Date	Location	Activity	Area (m2)	Garnet (kg)	Paint (L)	Overspray (%)	Containment (%)	Notes
31-Dec-16	Coast	Waterblasting (>1000psi)	39					Span 3
31-Dec-16	Coast	Painting: MC-Ferrox	38		8	0		Span 5, hand application
31-Dec-16	Coast	Painting: MC-Ferrox	19		4	15		Span 3
31-Dec-16	Coast	Painting: MC-Miomastic	24		5	0		Span 6, hand application
31-Dec-16	Coast	Painting: MC-Miomastic	19		4	15		Span 3
31-Dec-16	Coast	Painting: MC-Zinc	13		3	0		Span 6, hand application
31-Dec-16	Coast	Painting: MC-Zinc	37		8.5	0		Span 3, hand application
31-Dec-16	Coast	Dry abrasive blasting	5	105				Span 5, hand application
31-Dec-16	Coast	Dry abrasive blasting	8	165				Span 3
30-Nov-16	Coast	Painting: MC-Zinc			5	0	0	Span 3, hand application
30-Nov-16	Coast	Dry abrasive blasting	7	135			0	Span 3
30-Nov-16	Coast	Painting: MC-Zinc			7.5	0	0	Span 5, hand application
30-Nov-16	Coast	Painting: MC-Miomastic			2	0	0	Span 3, hand application
30-Nov-16	Coast	Painting: MC-Miomastic			12	0	0	Span 5, hand application
30-Nov-16	Coast	Painting: MC-Ferrox			2	0	0	Span 3, hand application
30-Nov-16	Coast	Dry abrasive blasting	5	105			0	Span 5
30-Nov-16	Coast	Waterblasting (>1000psi)	89					Span 3 , Span 5
30-Nov-16	Coast	Painting: MC-Ferrox			14.5	0	0	Span 5, hand application
31-Oct-16	Coast	Painting: MC-Ferrox			20	0	0	Span 1, hand application
31-Oct-16	Coast	Painting: MC-Miomastic			2	0	0	Span 7, hand application
31-Oct-16	Coast	Painting: MC-Zinc			1	0	0	Span 1, hand application
31-Oct-16	Coast	Dry abrasive blasting	7	135			0	Span 5
31-Oct-16	Coast	Dry abrasive blasting	19	375			0	Span 3
31-Oct-16	Coast	Painting: MC-Zinc			11	0	0	Span 3, hand application
31-Oct-16	Coast	Painting: MC-Zinc			2	0	0	Span 5, hand application
31-Oct-16	Coast	Painting: MC-Miomastic			3	0	0	Span 1, hand application
31-Oct-16	Coast	Painting: MC-Miomastic			7	0	0	Span 3, hand application

Date	Location	Activity	Area (m2)	Garnet (kg)	Paint (L)	Overspray (%)	Containment (%)	Notes
31-Oct-16	Coast	Painting: MC-Miomastic			2	0	0	Span 7, hand application
31-Oct-16	Coast	Painting: MC-Ferrox			2	0	0	Span 7, hand application
31-Oct-16	Coast	Painting: MC-Ferrox			4	0	0	Span 3, hand application
31-Oct-16	Coast	Waterblasting (>1000psi)	102					Span 1, Span 3
30-Sep-16	Coast	Painting: MC-Miomastic			3	0	0	Span 3, hand application
30-Sep-16	Coast	Dry abrasive blasting	61	1215			0	Span 1
30-Sep-16	Coast	Dry abrasive blasting	11	210			0	Span 3
30-Sep-16	Coast	Painting: MC-Zinc			21.5	0	0	Span 1, hand application
30-Sep-16	Coast	Painting: MC-Miomastic			16	15	0	Span 1
30-Sep-16	Coast	Painting: MC-Ferrox			30	15	0	Span 1
30-Sep-16	Coast	Painting: MC-Ferrox			15	0	0	Span 3, hand application
30-Sep-16	Coast	Waterblasting (>1000psi)	89					Span 1, Span 3
30-Sep-16	Coast	Painting: MC-Zinc			7	0	0	Span 3, hand application
31-Aug-16	Coast	Painting: MC-Ferrox			51	15	0	Span 5
31-Aug-16	Coast	Painting: MC-Zinc			8	0	0	Hand application, Span 3
31-Aug-16	Coast	Painting: MC-Zinc			31	0	0	Hand application, Span 5
31-Aug-16	Coast	Painting: MC-Miomastic			5	0	0	Hand application, Span 3
31-Aug-16	Coast	Painting: MC-Miomastic			18	15	0	Span 3
31-Aug-16	Coast	Painting: MC-Miomastic			12	0	0	Hand application, Span 5
31-Aug-16	Coast	Painting: MC-Miomastic			38	15	0	Span 5
31-Aug-16	Coast	Painting: MC-Ferrox			16	0	0	Hand applied, Span 5
31-Aug-16	Coast	Dry abrasive blasting	37	1110			0	Span 5
31-Aug-16	Coast	Waterblasting (>1000psi)	129					Bungy Pod,Span 5, Span3
31-Jul-16	Coast	Painting: MC-Ferrox			28	0	0	Span 5, hand application
31-Jul-16	Coast	Painting: Termarust 2100			15	0	0	Span 7, hand application
31-Jul-16	Coast	Painting: MC-Miomastic			33	0	0	Span 5, hand application
31-Jul-16	Coast	Dry abrasive blasting	60	1800			0	Span 5
31-Jul-16	Coast	Painting: MC-Ferrox			11	0	0	Span 3, hand application
31-Jul-16	Coast	Painting: MC-Zinc			43	0	0	Span 5, hand application
31-Jul-16	Coast	Painting: MC-Ferrox			38	15	0	Span 5

Date	Location	Activity	Area (m2)	Garnet (kg)	Paint (L)	Overspray (%)	Containment (%)	Notes
31-Jul-16	Coast	Waterblasting (>1000psi)	353				0	Span 7
30-Jun-16	Coast	Painting: MC-Zinc			7	0	0	Span 3, hand application
30-Jun-16	Coast	Painting: MC-Zinc			3	0	0	Span 1, hand application
30-Jun-16	Coast	Painting: MC-Zinc			11	0	0	Span 7, hand application
30-Jun-16	Coast	Painting: MC-Miomastic			4	0	0	Span 1, hand application
30-Jun-16	Coast	Painting: MC-Miomastic			6	0	0	Span 3, hand application
30-Jun-16	Coast	Painting: MC-Miomastic			6	0	0	Span 7, hand application
30-Jun-16	Coast	Painting: MC-Ferrox			3	0	0	Span 1, hand application
30-Jun-16	Coast	Painting: MC-Ferrox			6	0	0	Span 7, hand application
30-Jun-16	Coast	Painting: Termarust 2100			7	0	0	Span 7, hand application
30-Jun-16	Coast	Painting: Termarust 2100			63.5	15	0	Span 7
30-Jun-16	Coast	Dry abrasive blasting	23	680			0	Span 7
30-Jun-16	Coast	Painting: MC-Ferrox			11	0	0	Span 3, hand application
03-Jun-16	Coast	Waterblasting (>1000psi)	356				0	Span 7
31-May-16	Coast	Painting: MC-Ferrox			2	0	0	Span 3, hand application
31-May-16	Coast	Dry abrasive blasting	13	375			0	Span 1
31-May-16	Coast	Dry abrasive blasting	9	255			0	Span 3
31-May-16	Coast	Painting: MC-Zinc			9	0	0	Span 1, hand application
31-May-16	Coast	Painting: MC-Zinc			5	0	0	Span 3, hand application
31-May-16	Coast	Painting: MC-Miomastic			8	0	0	Span 1, hand application
31-May-16	Coast	Painting: MC-Ferrox			9	0	0	Span 1, hand application
31-May-16	Coast	Painting: Termarust 2100			#####	0	0	Span 7, hand application
31-May-16	Coast	Painting: Termarust 2100			#####	15	0	Span 7
31-May-16	Coast	Waterblasting (>1000psi)	359				0	Span 7
31-May-16	Coast	Painting: MC-Miomastic			2	0	0	Span 3, hand application
30-Apr-16	Coast	Painting: MC-Zinc			2	0	0	Span 7, hand application
30-Apr-16	Coast	Painting: Termarust 2100			#####	0	0	Span 7, hand application
30-Apr-16	Coast	Dry abrasive blasting	25	735			0	Span 7
30-Apr-16	Coast	Painting: MC-Zinc			14	0	0	Span 1, hand application
30-Apr-16	Coast	Dry abrasive blasting	4	120			0	Span 3

Date	Location	Activity	Area (m2)	Garnet (kg)	Paint (L)	Overspray (%)	Containment (%)	Notes
30-Apr-16	Coast	Painting: MC-Zinc			3	0	0	Span 3, hand application
30-Apr-16	Coast	Dry abrasive blasting	17	510			0	Span 1
30-Apr-16	Coast	Painting: MC-Miomastic			5	0	0	Span 3, hand application
30-Apr-16	Coast	Painting: MC-Ferrox			13	0	0	Span 1, hand application
30-Apr-16	Coast	Painting: Termarust 2100			#####	15	0	Span 7
30-Apr-16	Coast	Painting: MC-Miomastic			2	0	0	Span 7, hand application
30-Apr-16	Coast	Waterblasting (>1000psi)	724				0	Span 7
30-Apr-16	Coast	Painting: MC-Miomastic			14	0	0	Span 1, hand application
31-Mar-16	Coast	Painting: MC-Zinc			5	0	0	Hand application, Span1
31-Mar-16	Coast	Dry abrasive blasting	8	240			0	Span 3
31-Mar-16	Coast	Painting: MC-Zinc			7	0	0	Hand application, Span 3
31-Mar-16	Coast	Painting: MC-Miomastic			4	0	0	Hand application, Span 1
31-Mar-16	Coast	Painting: MC-Ferrox			1	0	0	Hand application, Span 1
31-Mar-16	Coast	Painting: Termarust 2100			18	15	0	Span 6
31-Mar-16	Coast	Painting: Termarust 2100			3.5	15	0	Span 7
31-Mar-16	Coast	Waterblasting (>1000psi)	552				0	Span 6
31-Mar-16	Coast	Painting: MC-Miomastic			2	0	0	Hand application, Span 3
29-Feb-16	Coast	Painting: MC-Zinc			2	0	0	Hand application, Span 7
29-Feb-16	Coast	Waterblasting (>1000psi)	1130				0	Waterblasting Jan-Feb
29-Feb-16	Coast	Dry abrasive blasting	3	90			0	Span3
29-Feb-16	Coast	Painting: MC-Miomastic			2	0	0	Hand application, Span 7
29-Feb-16	Coast	Painting: Termarust 2100			29	15	0	Span 6
29-Feb-16	Coast	Painting: MC-Zinc			2	0	0	Hand application, Span 3
29-Feb-16	Coast	Painting: MC-Miomastic			2	0	0	Hand application, Span 1
29-Feb-16	Coast	Painting: MC-Ferrox			5	0	0	Hand application, Span 1
29-Feb-16	Coast	Painting: MC-Zinc			2	0	0	Hand application, Span 1
31-Jan-16	Coast	Dry abrasive blasting	10	300			0	Span 7, lead confirmed <5000ppm, SSV
31-Jan-16	Coast	Painting: Termarust 2100			74	15	0	Span 6
31-Jan-16	Coast	Painting: MC-Ferrox			6	15	0	Span 7
31-Jan-16	Coast	Painting: MC-Miomastic			4	15	0	Span 7

Date	Location	Activity	Area (m2)	Garnet (kg)	Paint (L)	Overspray (%)	Containment (%)	Notes
31-Jan-16	Coast	Painting: MC-Zinc	26		6	15	0	Span 7

RELEASED UNDER THE OFFICIAL INFORMATION ACT 1982