

# Transmission Gully Project

Monthly Report to WGP

May 2018

TG-CPBH-RPT-ALL-GE-9171 Rev 00





RELEASED UNDER THE OFFICIAL INFORMATION ACT 1982

**Contents**

Executive Summary ..... 5

Safety and Health ..... 7

Construction ..... 11

Environment ..... 19

Communications / Stakeholder ..... 21

Resources ..... 23

Commercial ..... 25

Quality ..... 28

Appendix A: Media Monitor ..... 32

Appendix B: Progress Reporting – Design ..... 36

Appendix C: CPBHHEB JV Top Risks and Opportunities ..... 37

Appendix D: Overall Staging Plan ..... 41

Appendix E: TG Notice Registers ..... 42

Appendix F: Procurement Status ..... 43

Appendix G: Reconciliation of Payment Claims and Invoices to Date ..... 44

Appendix H: Monthly Progress Claim Graph ..... 45

Appendix I: Revenue Flow Graph / Table ..... 46

Appendix J: Cash Received ..... 47

Appendix K: Programme Dashboard ..... 48

Appendix L: Non Conformance Reports ..... 49

Appendix M: Construction Programme – Key Milestones ..... 50

Appendix N: Photos ..... 51

RELEASED UNDER THE OFFICIAL INFORMATION ACT 1982



RELEASED UNDER THE OFFICIAL INFORMATION ACT 1982





## Executive Summary

Over 4.25 million man hours completed on the Project to date. s 9(2)(b)(ii)

C2/3 Bulk earthworks are now finished for the season. Stabilisation is now planned for the entire area as part of the winter works strategy.

Bridge 26 saw an improvement in the period. Stage 1 L walls now complete. Stream diversions ahead for the period. MSE wall production improving with 608m<sup>2</sup> completed in the period. Bridge 4 and Bridge 15 abutment B now underway. Bridge 13 works ahead for the period with abutment reinforcement works continuing.

### Key Achievements:

- s 9(2)(b)(ii)
- Bridge 3 south abutment excavation complete.
- Bridge 8 Abutment A and B foundation preparation underway.
- Fill 19A access, clearing and temporary culverts complete with works now commenced on the stream diversion.
- SH58 shift (east) complete allowing the remaining foundation treatment at SH58 to be completed.
- Bridge 28 – Impact Wall construction completed.
- Stage 1 L walls and precast concrete edge barrier installation at Bridge 26 complete.
- ITS installation complete in Cut 45.
- Longitudinal drainage installation complete in Cut 46.
- Bridge 6 bridge deck and settlement slab construction complete.
- Bridge 11 base slab and installation of the reinforcing complete.
- Bridge 13 Abutment A complete / Abutment B reinforcing of abutment beam complete.
- Bridge 20 Pier 1: 8 of the 11 foundation concrete pours complete.
- Bridge 20 Pier 2: Foundation construction complete and column construction commenced.
- Bridge 20 Superstructure: Taken delivery of all of the launch one girders with assembly 95% complete.
- Bridge 19 temporary bulk water relocation completed.
- SH58 Wellington Electricity and Vodafone relocations complete.

s 9(2)(b)(ii)



Monthly Report to WGP May 2018

s 9(2)(b)(ii)



Boyd Knights

Project Director, D&C – Transmission Gully

CPB HEB Joint Venture

RELEASED UNDER THE OFFICIAL INFORMATION ACT 1982



Monthly Report to WGP May 2018

**Safety and Health**

Overview

- 54 project inductions conducted during May.
- s 9(2)(b)(ii)
- 36 Constructsafe assessments undertaken in May.
- Being at the Leading Edge Training (Safety Leadership Training) 2 x 2 day courses held with 30 personnel (Foreman, Jnr Foreman, SPEs, PEs and Functional support staff) put through the program.
- s 9(2)(b)(ii)

Project Hours

Project Hours @ May 2018				
Area	Life Of Project	Last Month	This Month	12MR*
TG Project Total**	4,257,318	161,513	181,587	1,999,157

\*\* Excludes Early Works Hours

\*12MR = 12 Month Rolling Total

s 9(2)(b)(ii)

RELEASED UNDER THE OFFICIAL INFORMATION ACT 1982



s 9(2)(b)(ii)

RELEASED UNDER THE OFFICIAL INFORMATION ACT 1982





s 9(2)(b)(ii)

RELEASED UNDER THE OFFICIAL INFORMATION ACT 1982



s 9(2)(b)(ii)

RELEASED UNDER THE OFFICIAL INFORMATION ACT 1982



## Construction

### Overview

s 9(2)(b)(ii)

Bridge 26 saw an improvement in the period. Stage 1 L walls now complete. Stream diversions ahead for the period. s 9(2)(b)(ii) Bridge 4 and Bridge 15 abutment B now underway. Bridge 13 works ahead for the period with abutment reinforcement works continuing.

In Zone 1, southern and northern tie-in works continue. MCK1850 headwall construction is ongoing with the first of the headwalls forecast to be completed mid-June. Liquefaction works at Bridge 2 continue. Bridge 2 MSE Wall production continues at Abutment A with a further 102m<sup>2</sup> completed in the period. Drainage line MCK/L5 is now complete. Handover of the first section of the Coast Road to pavements is expected late June. Excavation at the Bridge 3 South Abutment has been completed and works on the northern block have commenced. s 9(2)(b)(ii)

Construction of the final stream bed surface at Te Puka Section 4 continues with 3000T of rock placed. At Horokiri, crestal operations continued.

In Zone 2, Bridge 4 MSE continues as does headwall construction at NRT/9040. The inlet has now been poured with the outlet expected to be completed in June. At Bridge 6, deck construction has been completed. Base slab works have been completed at Bridge 11 and works are now underway on the wall sections. Final over batter works in Section E have slowed due to the weather. Handover of the construction platform is now expected by the end of June. The temporary bulk watermain relocation at Bridge 19 has now been completed. MSE works at Bridge 15 Abutment B continue. Rectification of construction works at Bridge 14 Abutment A are underway. These works have been applied to the program and have not impacted the overall SH58 switch date which remains scheduled for early November.

In Zone 3, works continue on the Stage 1 southern approach embankment. Works on the bottom beam at Retaining Wall 4 have been completed with only the final section of the capping beam now remaining. Construction of the Bridge 28 impact wall is complete. Access works at Kenepuru Drive have been completed which has allowed the foundation treatments for Retaining Wall 7 and 9 to commence.

At Bridge 20, 8 of the 11 foundation pours have now been completed. Column construction is now underway at Pier 2. At the launch yard all of the girders for the first launch are now on site.

### Zone 1

#### Achievements

- Northern interchange at BR2 is starting to take shape with subgrade and drainage works commenced and PET foundation treatment complete between Ch. 1400 – 1700.
- Coast Road south and north tie-in works progressing.





## Monthly Report to WGP May 2018

- Install inlet and outlet pipes major culvert MCK1850, head wall construction has commenced.
- Te Puka Section 5: Earthworks to stream level 90% complete; Section 4 rip rap channel 90% complete.
- Bridge 3 south abutment excavation complete and north block excavation commenced. Rock strength testing for arch foundation underway.
- Horokiri Section 4: Stage 2 earthworks 90% complete. Section 3 drainage blanket complete between Ch. 7400 – 7700.
- Slope stabilisation Cut 3.01NB to Cut 6.11NB ongoing. 1900m soil nails and sub-horizontal drains installed during May.

### Upcoming Milestones

- Switch traffic lanes at gate 2 in July
- Start Te Puka Section 5, stream channel construction in June
- Start Bridge 3 stream diversion, following north block excavation
- Liven Horokiri Section 5 stream channel late June
- Start Horokiri 2 stream channel late June

### Challenges and Mitigation

- Over optimum moisture content materials being won from cuts in B1 and B2.
- Difficult access to commence Cut 5A slope stabilisation.

## Zone 2

### Achievements

- s 9(2)(b)(ii) [redacted] Fill 27B undercut is now complete and being backfilled. C2/3 bulk earthworks finished for the season with the area now being locked up and stabilised.
- NRT/9040 inlet was poured with the outlet due for pour early June.
- BR08 Abutment A and Abutment B foundation preparation underway.
- Cut 8 and 9 catch drain works nearing completion; due to be finished in June.
- Fill 19A access, clearing and temporary culverts complete with works now commenced on the stream diversion.
- The SH58 shift (east) was completed at the end of May. This now allows the remaining foundation treatment at SH58 to be completed.
- The Lanes Flat entrance tie-in works commenced and is underway, weather has caused delays. Stage 1 lateral shift on existing SH58 has allowed foundation improvement works to commence.
- James Cook longitudinal drainage commenced (between BR16 abutments).





## Monthly Report to WGP May 2018

- BR19 temporary watermain complete with boxing out of the old water main to commence weather permitting.

### Upcoming Milestones

- Completion of major culvert headwall at NRT/9040 and livening of culvert.
- SH58 Foundation Treatment Completion (For new SH58 route).
- Commencement of SH58 longitudinal drainage.
- Completion of utility culvert 20550 backfill.
- Continuation of major culvert headwall for STH/21310.
- Fill 35.02 (BR19) foundation treatment completion and fill to underside of MSE wall.

### Challenges and Mitigations

s 9(2)(b)(ii)

## Zone 3

### Achievements / Milestones

#### Section F1

- Bridge 27 – Abutment A RSE Embankment construction – 20% complete. s 9(2)(b)(ii)
- CLR2 Widening Works at Bridge 27 – Abutment B ongoing but has been delayed by wet weather. Handover of construction platform to paving anticipated by early June.
- New access constructed to provide public access to 35 Kenepuru Drive Bowling Alley. New access has enabled undercut at RW7 and RW9 to commence with handover to MSE Wall Team scheduled for early June.
- Bridge 28 – Impact Wall construction completed.

#### Section F2

- Processing of Cut 42 material for RSE / MSE Embankments – ongoing. Overall 66% complete. Fills 43 and 44 – 90% complete by volume with remainder on hold until Phase 2 traffic switch complete.

#### Section F3



- Bridge 26 Stage 1 – Precast concrete edge barrier installation completed excluding stitch pours. Northern approach embankment Construction Platform handover to Pavements Team scheduled for early June. Southern approach subgrade and embankment construction ongoing.
- Bridge 25 – Abutment A RSE and MSE Embankment construction ongoing – 63% complete. Abutment B RSE and MSE Embankment construction commenced.
- Bridge 25 – Pier 3 Headstock falsework erected and reinforcement placement commenced.
- Subgrade preparation works ongoing in Cut 46 and Bridge 26 Stage 1 – Southern approach embankment.
- ITS installation complete in Cut 45 and ongoing in Cut 46 / Fill 47.
- Road lighting installation along SH1 southbound completed and ongoing northbound.
- RW4 – Capping beam and facing panel footing construction ongoing – 95% complete.
- RW5 – Capping beam construction ongoing – 40% complete. On hold until longitudinal drainage and ITS installation is complete by mid-June.
- Longitudinal drainage installation completed in Cut 46; ongoing in Cut 47 targeting mid-June for completion.

#### Upcoming Milestones

- Completion of Bridge 26 Stage 1 – Approach embankments.
- Completion of Cut 45 Construction Platform and handover to Pavement Team.
- Completion of RW4 & 5 capping beam and facing panel footings.
- Completion of Longitudinal Drainage Lines in Cut 47.
- Completion of CLR2 SH1 Southbound widening works at Bridge 27 – Abutment B.
- Commencement of Bridge 27 – Abutment B RSE Embankment.
- Completion of Bridge 25 – Abutment A RSE Embankment to a sufficient level to facilitate bridge abutment construction.
- Completion of ITS and Road Lighting installation to facilitate Phase 2 traffic switch.

#### Challenges & Mitigation Strategies

- s 9(2)(b)(ii) [Redacted]

#### Structures

#### Achievements

- MCK1850: The installation of the reinforcing on the outlet structures is complete.
- Bridge 6: The bridge deck and settlement slab construction have been completed.
- Bridge 11: The base slab has been constructed and installation of the reinforcing for the first stage of the construction of the walls have also been completed.





- Bridge 13:
  - Abutment A – Completed construction of the abutment beam – 100% complete.
  - Abutment B – Reinforcing of the abutment beam is complete.
- Bridge 20:
  - Pier 1: Completed 8 of the 11 foundation concrete pours.
  - Pier 2: Foundation construction complete and column construction commenced.
  - Superstructure: Taken delivery of all of the launch one girders. The assembly of the girders is now 95% complete.

#### Upcoming Milestones

- Bridge 6 – complete the installation of the concrete barriers.
- Bridge 11 – complete the construction of the walls.
- Bridge 20:
  - Pier 1 – Installation of the column cage and cradle
  - Pier 2 – Complete the first column concrete pour.
- Culvert Headwall CH1850: Complete both (Inlet & outlet) wing wall concrete pours.

#### Challenges

s 9(2)(b)(ii)

#### Utilities and ITS

##### Achievements

- BR19 temporary bulk water relocation completed
- SH58 – Wellington Electricity relocation completed
- SH58 – Vodafone relocation completed

##### Milestones

- Bridge 19 permanent bulk water relocation – September - November
- Te Marua bulk water relocation – June – August
- Commencement of street light installation – June



s 9(2)(b)(ii)

## Project Wide Works

### Achievements

- Keystone walls 33% complete across the Project. Works currently in progress on Bridge 12, 25, and RW2.
- REL walls 31% complete across the Project with works currently underway on Bridges 2, 4, 14, 14A, and 15 abutment Bs. Bridge 13B handed over to structures for abutment construction.
- Reinforced Earth Ltd have commenced fabrication of panels for Bridges 16 (68% complete) and 19 (70% complete).
- 90% Design received from Reinforced Earth – BR24.
- Design submitted to NZTA for review BR4, BR16, BR19
- ITS Duct, lighting conduits and chambers installation commenced at Kenepuru as part of Phase 2 traffic switch.
- Landscaping mitigation planting commenced in Te Puka, Horokiri and Pauatahanui catchments. Geosock installation 15% complete across the project and ongoing stabilisation with final hydro seeding treatments on cut and fill batters.
- 98 goats to date have been terminated prior to planting commencing.
- The mitigation fencing program commenced in May. The team has started work up in the Te Puka and Horokiri catchments.
- Lateral shift of the traffic lanes at SH58 has been completed allowing foundation improvement works to commence. During these works there is a 30km TSL for the next few months to accommodate cyclists in the area.





### Upcoming Milestones

- Bridge 16; Bridge 28; RW7; RW9 Mechanically Stabilised Earth (MSE) Walls are expected to commence in June.
- ITS Duct and Chambers Installation to areas E1, E2, C1, and SH58 interchange crossings. Approximately 3km of subgrade at level to allow these works to commence.
- Permanent Barrier and line marking installation as part of the Phase 2 traffic switch at Kenepuru
- Traffic Management:
  - Paekakariki Southbound lane shift programmed for July (Gate 2). Ongoing closures at Kenepuru interchange to accommodate shoulder widening works, trialling of alternate traffic separation device to be undertaken.
  - At Linden there will be various night closures in June through July to allow for shoulder widening activities. This is preparation works for the Stage 2 Traffic Switch. In June the southbound lanes of SH1 will be reduced to a 70km/hr TSL.

### Challenges and Mitigation

s 9(2)(b)(ii)

### Pavements / Stage 2 Earthworks

#### Achievements

- Willowbank Quarry – completed pre-application meeting with GWRC. Draft copy of the sediment control part of the consent will be sent to GWRC for review before official lodgement to try to expedite the process.
- Farmers Quarry – Consent progressing. Minor changes from aquatic experts received. Quarry management drawings from EIC are currently being amended to suit.
- Stage Two Earthworks application has been submitted and we have received a request for more information. A response has been drafted.

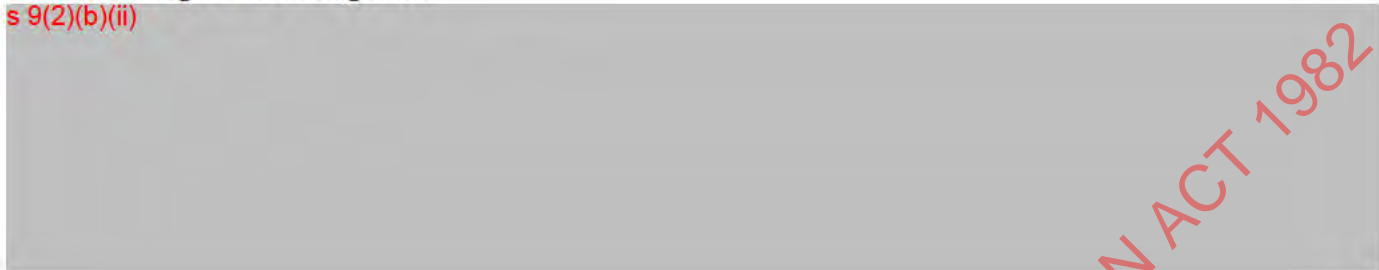


**Milestones**

- Nil

**Challenges and Mitigation**

s 9(2)(b)(ii)



RELEASED UNDER THE OFFICIAL INFORMATION ACT 1982

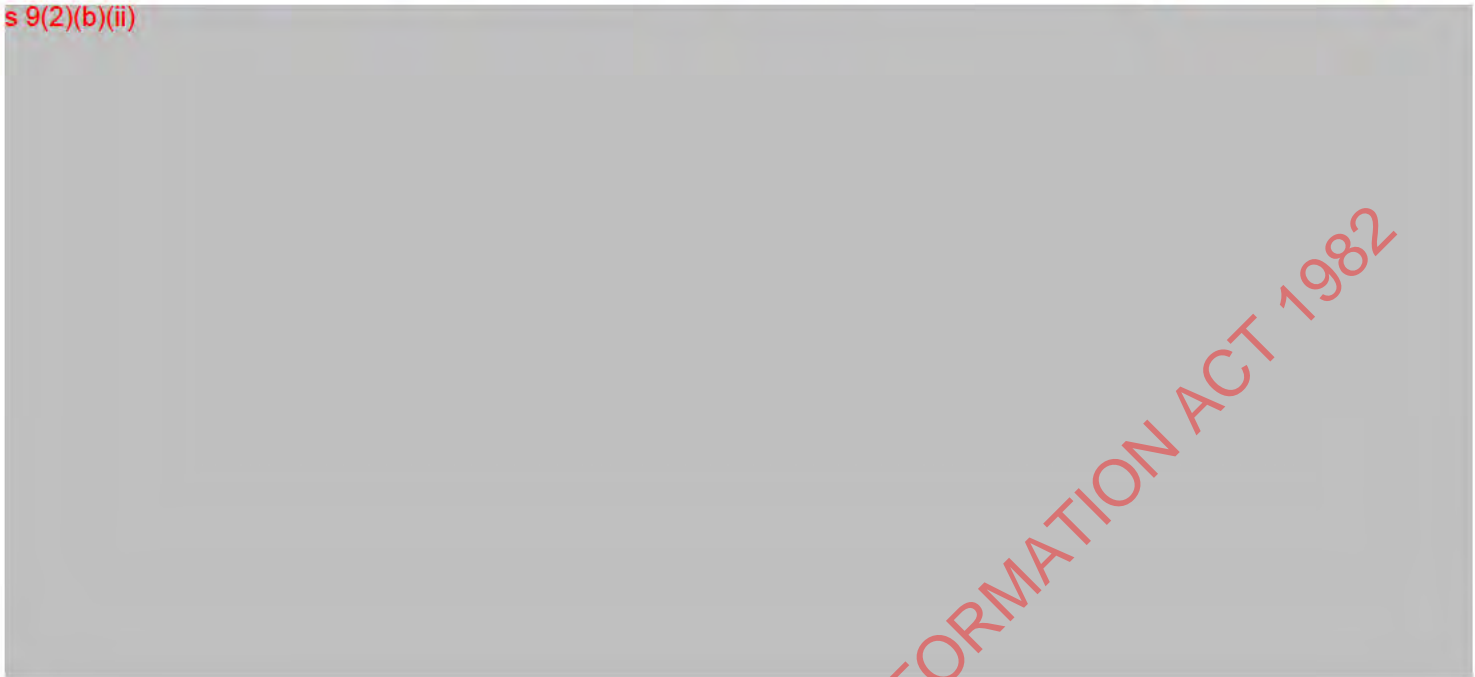


s 9(2)(b)(ii)

RELEASED UNDER THE OFFICIAL INFORMATION ACT 1982



s 9(2)(b)(ii)



RELEASED UNDER THE OFFICIAL INFORMATION ACT 1982





## Communications / Stakeholder

### Community Engagement

#### Stakeholder Concerns and Issues

s 9(2)(a)

Planning for the broad community engagement about the upcoming traffic switches on SH1 is underway. We will hold a community meeting for the nearest residents to provide information on how the bridge demolition might affect them in terms of road blockages and noise and do a leaflet drop to nearby properties. Information for road users will be disseminated via NZTA and other appropriate channels.

The project hosted CEO and Mayors of the TAs for a site tour on 8 May.

The Project presented to the Wellington region chapter of the Lions Club in central Wellington on 31 May.

The Project will be involved in the upcoming IPENZ Week of Engineering in August as per last year and will host a group of students for a site tour and will be present at the Wellington Expo to be held at Shed 5.

#### Visitor Centre

The visitor centre was located beside New World in Tawa until the end of May when it was moved to Dolly Varden Park in Mana. It will be located there until the beginning of September when it will be moved to Civic Square in Wellington.

### Communications

#### Construction Updates / Quarterly e-Newsletter

The May newsletter has been issued to 2439 recipients. We had 71 new subscribers since April 2018, with 72.9% of recipients opening the newsletter and 62% of those following a link in the newsletter.

#### Website

We had 12,535 page views in the month of May.



## Media

- Successful lizard release PR
- Media follow-up requests on Filipino story: Radio NZ. Construction industry magazine 'Inside Resources' has also requested information relating to Filipinos with angle of wider construction industry shortage of skilled workers.

## Beach FM Interviews

- 8 May – Rudolf Joubert, Structures Manager – “Structures underway for the Project and resilience built into these”.
- Tuesday 15 May – John Humphrey – WGP
- Tuesday 22 May – Simon Jones – Utilities Manager

RELEASED UNDER THE OFFICIAL INFORMATION ACT 1982



s 9(2)(b)(ii)

RELEASED UNDER THE OFFICIAL INFORMATION ACT 1982



### New People

The following staff commenced on the Project during the month of May:

s 9(2)(a)

Site Engineer

### Voluntary Staff Churn

Rolling average for period May 2017 to May 2018 is 12.28%.

RELEASED UNDER THE OFFICIAL INFORMATION ACT 1982





s 9(2)(b)(ii)

RELEASED UNDER THE OFFICIAL INFORMATION ACT 1982

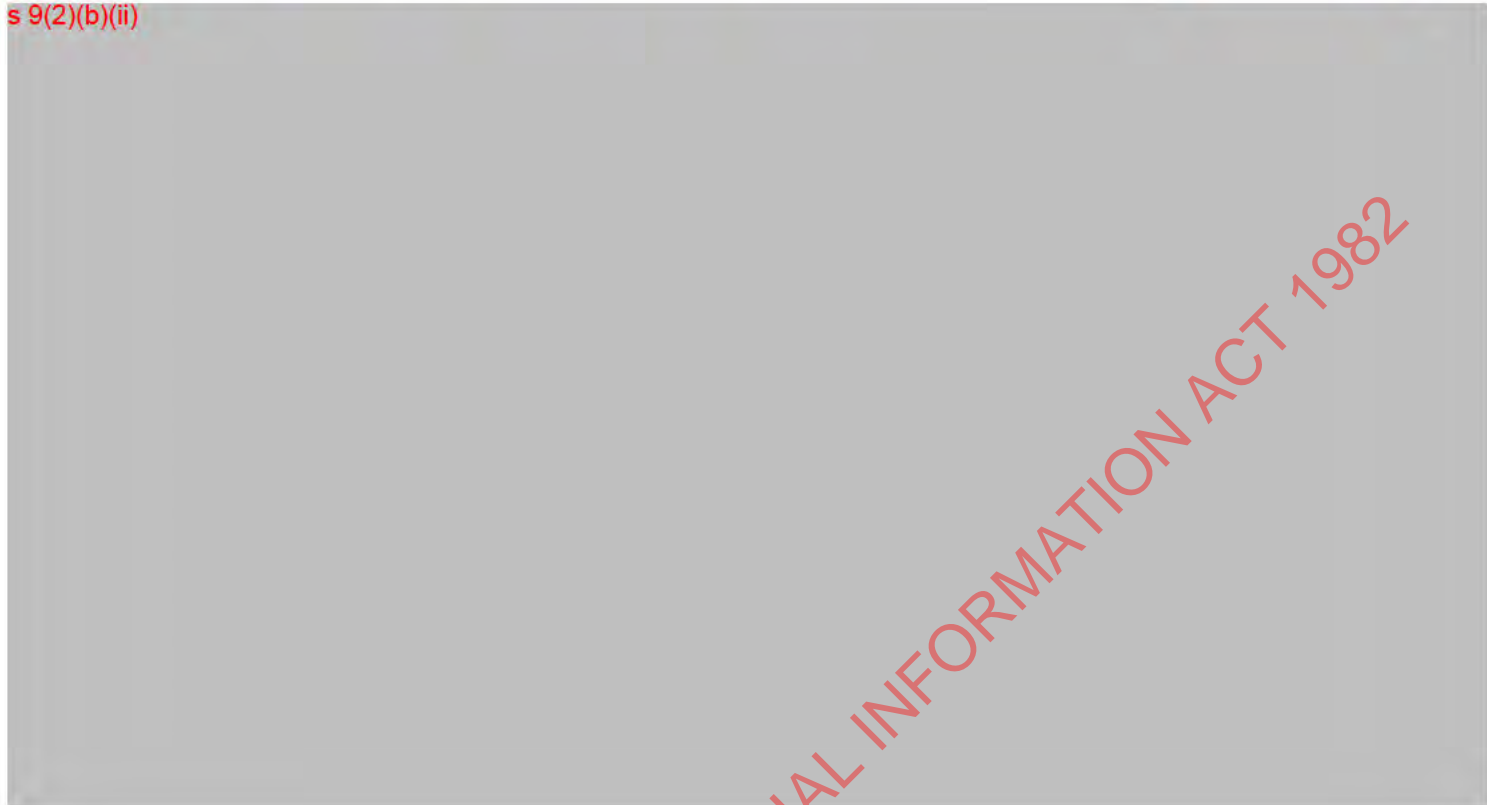


s 9(2)(b)(ii)

RELEASED UNDER THE OFFICIAL INFORMATION ACT 1982



s 9(2)(b)(ii)



RELEASED UNDER THE OFFICIAL INFORMATION ACT 1982



s 9(2)(b)(ii)

RELEASED UNDER THE OFFICIAL INFORMATION ACT 1982





s 9(2)(b)(ii)

RELEASED UNDER THE OFFICIAL INFORMATION ACT 1982



s 9(2)(b)(ii)

RELEASED UNDER THE OFFICIAL INFORMATION ACT 1982



s 9(2)(b)(ii)

RELEASED UNDER THE OFFICIAL INFORMATION ACT 1982



**Appendix A: Media Monitor**

RELEASED UNDER THE OFFICIAL INFORMATION ACT 1982





News Media

[Wellington region's Transmission Gully project hits halfway mark | Stuff ...](https://www.stuff.co.nz/.../wellington-regions-transmission-gully-project-hits-halfway-m...)

<https://www.stuff.co.nz/.../wellington-regions-transmission-gully-project-hits-halfway-m...>

16 hours ago - A productive summer season has put construction on the 27km **Transmission Gully** over the halfway mark. The countdown is on: **Transmission** .



[Wellington's Transmission Gully opens \(but still two years till it opens\)](#)

Stuff.co.nz-2/06/2018

**Transmission Gully** road works, looking from Pauatahanui south towards Tawa, in December taken by Leo Cooney from Manawatu Aviation ...



[Porirua city decides against allocating \\$11 million for strategic property](#)

The Dominion Post-6/06/2018

The council is preparing itself for the impact of **Transmission Gully**. Pictured here looking from Pauatahanui south towards Tawa. (File photo).

[NZTA knew about substandard Chinese steel, emails show](#)

Newshub-6/06/2018

The emails also show steel planned for use in Wellington's **Transmission Gully** project didn't have to be tested at all. NZTA said it has since ...

[Docs reveal lack of independent testing on highway steel](#)

Radio New Zealand-6/06/2018

They also show the agency had no requirement for independent steel testing at the **Transmission Gully** highway being built near quake-prone ...

[Docs reveal Huntly steel failure despite NZTA denials](#)

Radio New Zealand-6/06/2018

They also show the agency had no requirement for independent steel testing at the **Transmission Gully** highway being built near quake-prone ...

[Porirua City Council agrees Long-term Plan](#)

Scoop.co.nz-7/06/2018

"These safety improvements will also support growth into the future, particularly once the link roads from **Transmission Gully** Highway are open ...

[Apple's bold act - taking responsibility with Screen Time](#)

Stuff.co.nz-4/06/2018

Apple 'opens' **Transmission Gully**, two years before you can actually drive on it. You'll now be able to see how much time you spend on each ...

[Transmission Gully 'fighter' spent final years looking away as farm was ...](#)

The Dominion Post-13/02/2018

A September update on progress on the **Transmission Gully** motorway, north of Wellington, which is one of NZTA's four proposed toll roads.



[The National Business Review](#)

[NZTA extends opening date of \*Transmission Gully\*](#)

New Zealand Herald-25/01/2018

The New Zealand Transport Agency has given the joint venture building the \$850 million *Transmission Gully* motorway north of Wellington ...

**Social Media**

Like Page



[Stuff](#)

[1 hr](#) ·

Only two years to go!

STUFF.CO.NZ

[Wellington region's \*Transmission Gully\* project hits halfway mark](#)

The \$850 million project continues to head in the right direction and at a good speed.

[15 Comments](#)

[11 Shares](#)

118118

[Belinda Mackenzie-Dodds](#)

[Like](#)Show More Reactions

[Comment](#)

[Share](#)

Like Page



[Stuff](#)

[3 June at 17:05](#) ·

Sorry Wellingtonians, you can't yet drive the *Transmission Gully* route yet.

RELEASED UNDER THE OFFICIAL INFORMATION ACT 1982





STUFF.CO.NZ

[Apple Maps 'opens' Transmission Gully two years early](#)

[114 Comments](#)

[43 Shares](#)

[452452](#)

 [Belinda Mackenzie-Dodds](#)

[Like](#) [Show More Reactions](#)

[Comment](#) [Share](#)

RELEASED UNDER THE OFFICIAL INFORMATION ACT 1982



**Appendix B: Progress Reporting – Design**

RELEASED UNDER THE OFFICIAL INFORMATION ACT 1982



RELEASED UNDER THE OFFICIAL INFORMATION ACT 1982



**Appendix C: CPBHEB JV Top Risks and Opportunities**

RELEASED UNDER THE OFFICIAL INFORMATION ACT 1982



Monthly Report to WGP May 2018



s 9(2)(b)(ii)



RELEASED UNDER THE OFFICIAL INFORMATION ACT 1982

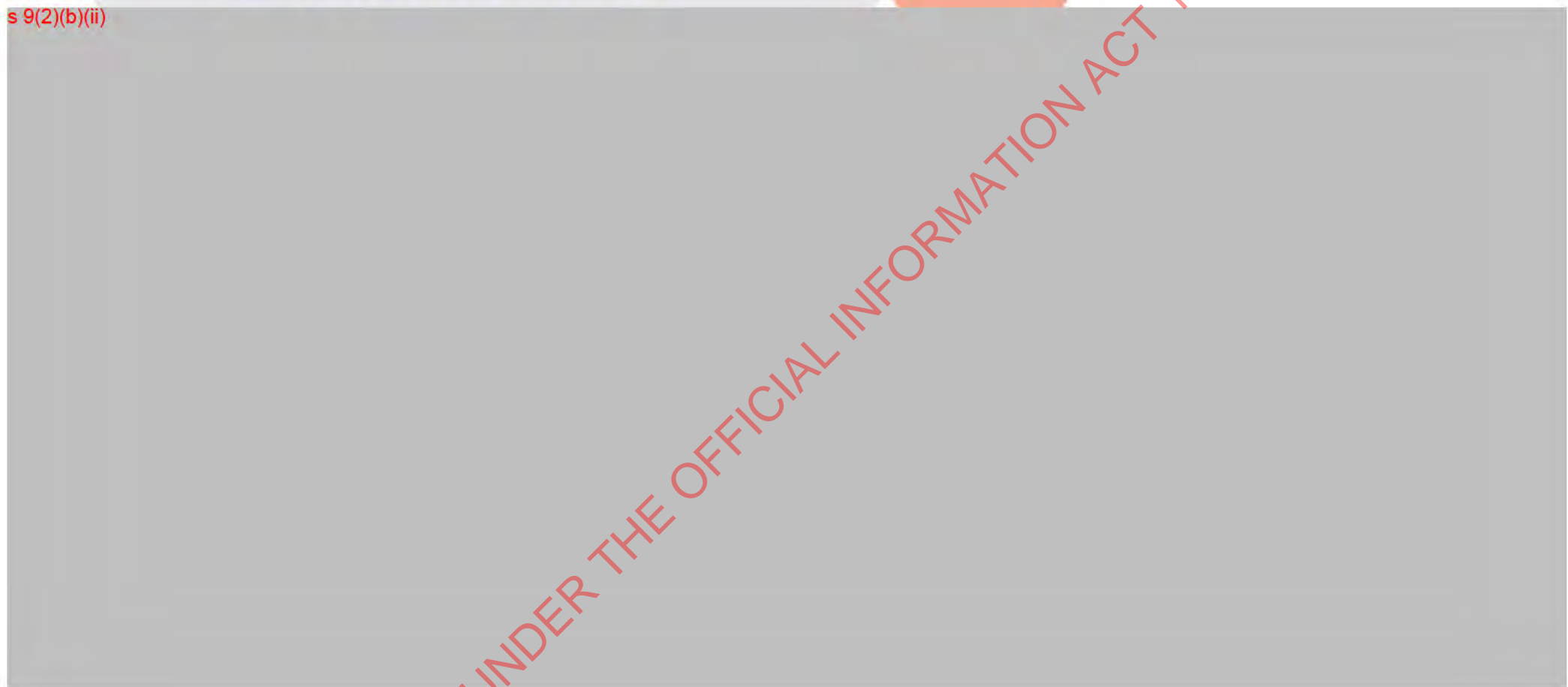




Monthly Report to WGP May 2018



s 9(2)(b)(ii)



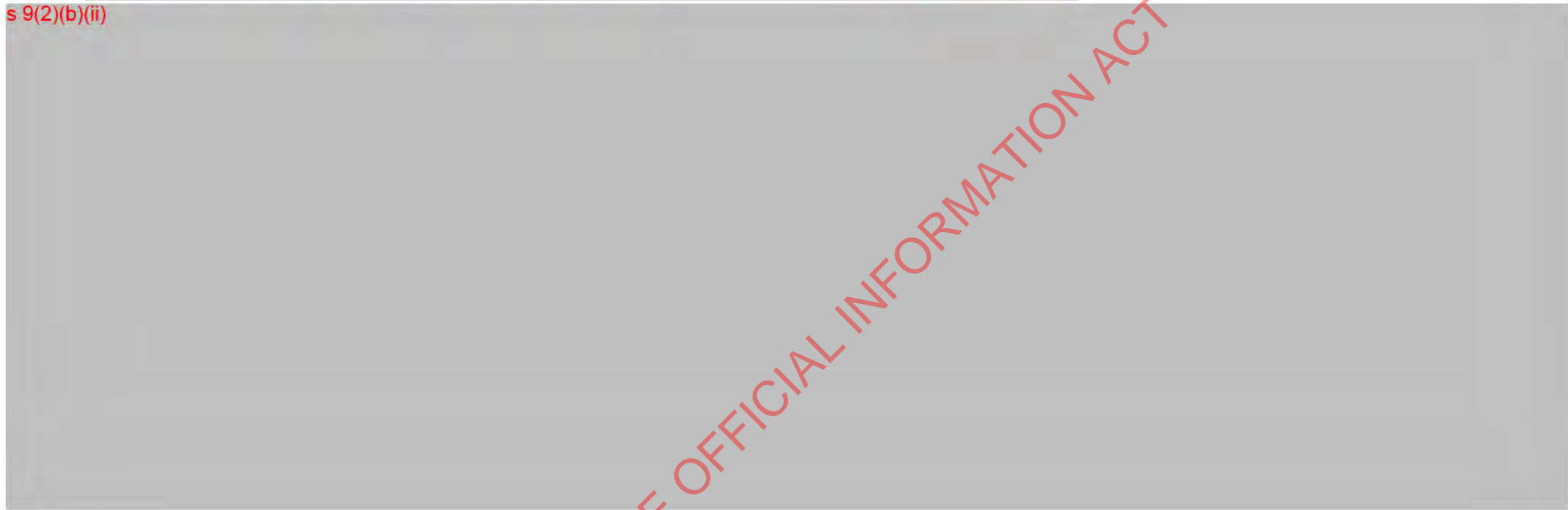
RELEASED UNDER THE OFFICIAL INFORMATION ACT 1982



Monthly Report to WGP May 2018



s 9(2)(b)(ii)



RELEASED UNDER THE OFFICIAL INFORMATION ACT 1982



**Appendix D: Overall Staging Plan**

RELEASED UNDER THE OFFICIAL INFORMATION ACT 1982

RELEASED UNDER THE OFFICIAL INFORMATION ACT 1982





**Appendix E: TG Notice Registers**

RELEASED UNDER THE OFFICIAL INFORMATION ACT 1982

s 9(2)(b)(ii)

RELEASED UNDER THE OFFICIAL INFORMATION ACT 1982

s 9(2)(b)(ii)

RELEASED UNDER THE OFFICIAL INFORMATION ACT 1982

s 9(2)(b)(ii)

RELEASED UNDER THE OFFICIAL INFORMATION ACT 1982





**Appendix F: Procurement Status**

RELEASED UNDER THE OFFICIAL INFORMATION ACT 1982

s 9(2)(b)(ii)



RELEASED UNDER THE OFFICIAL INFORMATION ACT 1982



**Appendix G: Reconciliation of Payment Claims and Invoices to Date**

RELEASED UNDER THE OFFICIAL INFORMATION ACT 1982

RELEASED UNDER THE OFFICIAL INFORMATION ACT 1982





**Appendix H: Monthly Progress Claim Graph**

RELEASED UNDER THE OFFICIAL INFORMATION ACT 1982

RELEASED UNDER THE OFFICIAL INFORMATION ACT 1982



**Appendix I: Revenue Flow Graph / Table**

RELEASED UNDER THE OFFICIAL INFORMATION ACT 1982

RELEASED UNDER THE OFFICIAL INFORMATION ACT 1982



RELEASED UNDER THE OFFICIAL INFORMATION ACT 1982

RELEASED UNDER THE OFFICIAL INFORMATION ACT 1982



**Appendix J: Cash Received**

RELEASED UNDER THE OFFICIAL INFORMATION ACT 1982

RELEASED UNDER THE OFFICIAL INFORMATION ACT 1982

RELEASED UNDER THE OFFICIAL INFORMATION ACT 1982





**Appendix K: Programme Dashboard**

RELEASED UNDER THE OFFICIAL INFORMATION ACT 1982

RELEASED UNDER THE OFFICIAL INFORMATION ACT 1982

RELEASED UNDER THE OFFICIAL INFORMATION ACT 1982

RELEASED UNDER THE OFFICIAL INFORMATION ACT 1982

RELEASED UNDER THE OFFICIAL INFORMATION ACT 1982





**Appendix L: Non Conformance Reports**

RELEASED UNDER THE OFFICIAL INFORMATION ACT 1982

RELEASED UNDER THE OFFICIAL INFORMATION ACT 1982

RELEASED UNDER THE OFFICIAL INFORMATION ACT 1982



**Appendix M: Construction Programme – Key Milestones**

RELEASED UNDER THE OFFICIAL INFORMATION ACT 1982

RELEASED UNDER THE OFFICIAL INFORMATION ACT 1982





**Appendix N: Photos**

RELEASED UNDER THE OFFICIAL INFORMATION ACT 1982



**Monthly Report to WGP May 2018**



Zone 1



Photo Above: A1 Coast Rd Stabilised Fill Batter Ch. 200 - 500



Photo Above: A1 Fill 1 PET Layers Ch. 1680 - 1410



Photo Above: A2 Fill 2B and 2A foundation treatment

RELEASED UNDER THE OFFICIAL INFORMATION ACT 1982



Monthly Report to WGP May 2018



Photo Above: B1 Cut 5C fourth batter shotcrete



Photo Above: B1 Cut Chute Ch. 4960 NB

RELEASED UNDER THE OFFICIAL INFORMATION ACT 1982





**Monthly Report to WGP May 2018**



Photo Above: B1 Te Puka Section 4 stream channel



Photo Above: B1 Te Puka Section 5 earthworks

RELEASED UNDER THE OFFICIAL INFORMATION ACT 1982



Monthly Report to WGP May 2018



Photo Above: B2 Fill 5 Ch. 7400 to 7700 foundation treatment



Photo Above: B2 Horokiri 4 Stage 2 earthworks

RELEASED UNDER THE OFFICIAL INFORMATION ACT 1982



Zone 2



Photo Above: 9040 Culvert



Photo Above: 9040 Culvert

RELEASED UNDER THE OFFICIAL INFORMATION ACT 1982



Monthly Report to WGP May 2018



Photo Above: 21310 Culvert



Photo Above: Fill 24A



Photo Above: Bridge 29

RELEASED UNDER THE OFFICIAL INFORMATION ACT 1982





Photo Above: Fill 37C Batter Works



Photo Above: Fill 37C Channel Pour



Photo Above: Lanes Flat Entrance





Photo Above: Rip Rap around MSE



Photo Above: SH58



Photo Above: Stiling Basin



Zone 3



Photo Above: Bridge 25 - Abutment A MSE and RSE Embankment Construction



Photo Above: Bridge 25 - Abutment B MSE and RSE Embankment Construction



Photo Above: Bridge 25 - View looking South

RELEASED UNDER THE OFFICIAL INFORMATION ACT 1982



Photo Above: Bridge 26 - Completed bridge structure and Barrier Installation complete



Photo Above: Bridge 28 - Impact Wall Construction completed



Photo Above: Cut 42 - Material Processing





Photo Above: Cut 45 - Construction Platform



Photo Above: Cut 47 - Longitudinal Drainage Installation



Photo Above: ITS Installation - Cut 45





Photo Above: RW4 Capping Beam and Facing Panel Foundation Construction



Photo Above: RW7 Undercut commenced



Photo Above: RW9 Undercut commenced

Structures



Photo Above: BR6 - Bridge deck



Photo Above: Photo Above: BR6 - Bridge deck



RELEASED UNDER THE OFFICIAL INFORMATION ACT 1982



Photo Above: BR20 Launch yard



Photo Above: BR20 Launch yard



Photo Above: BR20 - Pier 2 - Removal of cradle and column starter cage



Photo Above: BR20 Launch yard



Photo Above: CH1850 - Outlet



Photo Above: Headwall CH1850

RELEASED UNDER THE OFFICIAL INFORMATION ACT 1982



Project Wide



Photo Above: Photo Above: BR6 - Bridge deck



Photo Above: Bridge 12



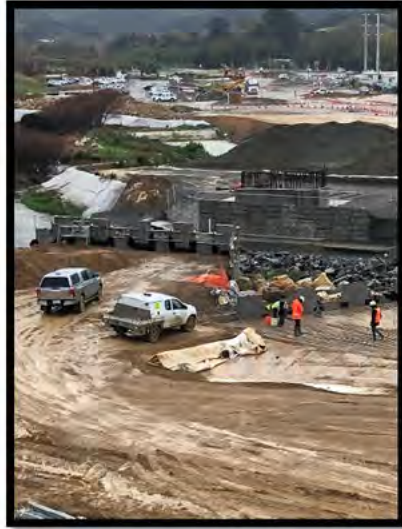


Photo Above: Bridge 14

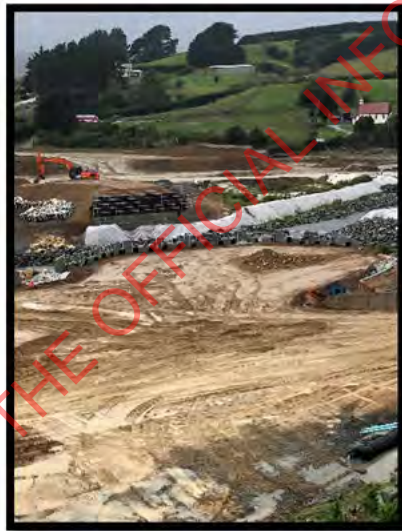


Photo Above: Bridge 14A



Photo Above: Bridge 15

RELEASED UNDER THE OFFICIAL INFORMATION ACT 1982



Utilities



Photo Above: Temp Bulk Water Relocation - BR19



Photos Above: Temp Bulk Water Relocation - BR19

RELEASED UNDER THE OFFICIAL INFORMATION ACT 1982